



ENGINEERING  
WITH **FOCUS**

TOWNSHIP OF BARNEGAT, NJ



**RESPONSE TO THE REQUEST FOR PROPOSALS FOR  
2026 PROFESSIONAL SERVICES  
TOWNSHIP AND WATER/SEWER UTILITY POOL ENGINEER**

November 21, 2025



[www.vancleefengineering.com](http://www.vancleefengineering.com)

# TABLE OF CONTENTS

## **SECTION 1. INTRODUCTION**

- Submission Letter
- Firm Profile, WBE Certification, Overview, Offices & Partners
- Executive Summary
- Statement of Qualifications

## **SECTION 2. REPRESENTATIVE CLIENTS, PROJECT EXPERIENCE & REFERENCES**

- Representative Clients
- Relevant Project Experience
- References

## **SECTION 3. STAFF QUALIFICATIONS**

- Summary of Key Staff
- Team Resumes and Qualifications

## **SECTION 4. REQUIRED FORMS & BUSINESS DOCUMENTS**

- Fee Schedule
- Required Signed Business Documents

# SECTION 1. INTRODUCTION

---

November 21, 2025

Donna M. Manno, RMC, Municipal Clerk  
Township of Barnegat  
900 West Bay Avenue  
Barnegat, NJ 08805

Re: Request for Proposals for 2026 Professional Services – Water/Sewer Utility Pool Engineer

Dear Ms. Manno:

Van Cleef Engineering Associates, LLC (Van Cleef) is pleased to submit this Proposal in response to Notice of RFP regarding Professional Services for the Township of Barnegat in 2026.

As a multi-disciplined firm of engineers, landscape architects, bridge and dam engineers, certified inspectors and land surveyors, Van Cleef provides expertise in all of the major areas of water/wastewater engineering, civil engineering and land surveying. Our firm has over 225 employees in nine (9) regional offices strategically located throughout New Jersey and eastern Pennsylvania. We are focused on building offices and long-term relationships in concentrated regions which allows us to bring a unique understanding of the local codes, regulations, and processes to every project. As a WBE-certified company, we adhere to the highest standards of business practices while championing opportunities for women in entrepreneurship and leadership roles. This certification underscores our credibility, reliability, and capability to meet the diverse needs of our clients and partners.

It is proposed that I, Mark A. Bean, PE, CGP, LEED AP, FIGP will serve as Project Principal and act as primary point of contact with the Township. I bring more than three (3) decades of diverse facility-intensive planning, design, and construction management experience and have extensive expertise in water and wastewater treatment, in the design and construction of water and wastewater infrastructure, in the operations and maintenance of wastewater facilities and collection systems and water treatment facilities and distribution systems, and in efficient and effective planning for long-term capitalization and asset management to ensure a sustainable future for the Township and its assets.

I will be supported by an exceptional team of professionals. We have been the water and wastewater engineers for dozens of Municipal and Regional Utility Authorities and municipalities and the water and wastewater design engineers for numerous land developers. Current Van Cleef staff members have extensive experience assisting Municipalities and Authorities with the design, construction and operation of numerous water and wastewater infrastructure projects including upgrades, rehabilitations, and expansions. Our capabilities also include assisting with funding applications such as the NJ Infrastructure Bank (I-Bank) and the USDA loan & grant applications through the U.S. Department of Agriculture. Van Cleef's water and wastewater professionals are some of the best in the business.

## OFFICE LOCATIONS

[www.vancleefengineering.com](http://www.vancleefengineering.com)

Hillsborough, NJ  
908-359-8291

Mt. Arlington, NJ  
862-284-1100

Phillipsburg, NJ  
908-454-3080

Doylestown, PA  
215-345-1876

Pottstown, PA  
610-323-4040

Hamilton, NJ  
609-689-1100

Toms River, NJ  
732-573-0490

Freehold, NJ  
732-303-8700

Bethlehem, PA  
610-332-1772

Please note that all required documents listed in this solicitation are included in this submission, including key staff and qualifications, areas of practice, experience and reputation, staff summaries, organizational chart, resumes, ability to provide timely services, and required business documents.

We appreciate the opportunity to submit this Statement of Qualifications and look forward to working with the Township. Should you have any questions concerning this submission, please do not hesitate to contact me please do not hesitate to contact me directly at any time via phone at (732) 485-8594 or via email to [mbean@vancleefengineering.com](mailto:mbean@vancleefengineering.com).

Very truly yours,



Mark A. Bean, PE, CGP, LEED AP, FIGP  
Vice President, Water/Wastewater

# FIRM PROFILE

**Van Cleef Engineering Associates, LLC (Van Cleef)** has successfully served municipalities and authorities with a broad spectrum of engineering and surveying services for over 50 years. In response to the Township of Barnegat's Request for Proposals for 2026 Professional Services – Township and Water/Sewer Utility Pool Engineer, Van Cleef will provide high quality and cost-effective services.

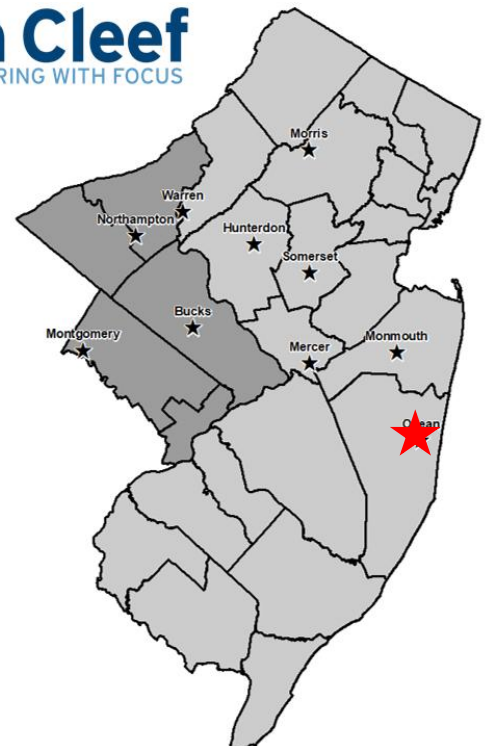
Van Cleef is committed to providing personalized solutions for even the most complex land development and infrastructure projects. Since our inception in 1972, Van Cleef has established itself with its peers and clients as a prominent and well-respected consulting firm. The firm's success and accomplishments can be directly attributed to hard work and a commitment to providing clients with innovative and cost-effective solutions to their problems.

Van Cleef has extensive experience serving municipalities in Ocean County. Our services include: Municipal Consulting; Design and Inspection of Capital Projects, as well as the processing of permits with NJDEP and NJDOT; the Procurement and Coordination of State Grants/Funding Programs relating to road and environmental improvement projects; GIS/Mapping Systems; Construction Observation and Oversight for capital improvement and land development projects; Bid Solicitation and Evaluation; and Contractor Oversight and Inspection. Van Cleef provides Engineering assistance to Municipal Officials, Planning/Zoning Boards, Public Works Departments, and Department Heads as directed. Other disciplines include Landscape Architecture, Water/Wastewater Engineering, Planning, Land Surveying, and Bridge and Dam Engineering.

Through the years, our clients have received the benefits of a large firm while receiving one-on-one personalized service. All of our services will be provided through a single point of contact who will manage all assignments and provide quality control over all deliverables. Mark A. Bean, PE, CGP, LEED AP, FIGP, Vice President, Water/Wastewater will be this point of contact for the Township of Barnegat.

## Presenting Office:

1705 Route 37 East  
Toms River, NJ 08753  
P: 732-573-0490  
F: 732-573-0499  
Contact: Mark A. Bean, PE, CGP, LEED AP, FIGP  
[mbean@vancleefengineering.com](mailto:mbean@vancleefengineering.com)



WBE CERTIFIED



**Van Cleef Engineering Associates, LLC (Van Cleef)** is proud to announce that we have been certified as a Women's Business Enterprise (WBE) by the State of New Jersey.

This milestone reflects our unwavering commitment to diversity, equity, and inclusion in the business landscape. The WBE certification recognizes companies that are at least 51% owned, controlled, operated, and managed by women. It is a testament to our dedication to excellence, innovation, and empowerment.

Benefits of partnering with a WBE-certified company like ours include access to supplier diversity programs, fostering of new business relationships, and supporting the growth of women in business.

# FIRM OVERVIEW



**Van Cleef** takes a strategically focused approach that provides innovative and cost-effective engineering solutions to public and private clients, and the resources to help build better communities for today and into the future. As a multi-disciplined firm of engineers, landscape architects, planners, bridge and dam engineers, certified inspectors and land surveyors, we provide expertise in all of the major areas of civil engineering and land surveying.

Since our inception in 1972, the professionals at Van Cleef approach every job the same way: with unwavering honesty, integrity, and passion. Van Cleef has more than 225 employees in nine (9) regional offices strategically located throughout New Jersey and eastern Pennsylvania. Relevant services we can provide include:

- Water & Wastewater Engineering
- Utility Operations
- Stormwater Management
- Watershed Management
- Capital Infrastructure Design & Specifications
- Construction Inspection/ Monitoring/Management
- Local, State, & Federal Permitting
- Land Surveying
- Flow Metering and Projections
- Soils Investigation & On-Lot Sewage Disposal
- Geotechnical Engineering
- Dam Design and Inspection
- Meeting Representation/Attendance
- Community & Regional Planning
- Municipal Engineering
- Plan Reviews
- Grant Writing & Administration

# OFFICE LOCATIONS/PROFESSIONAL PARTNERS

## OFFICE LOCATIONS

### Headquarters

32 Brower Lane  
Hillsborough, NJ 08844 Tel: 908-359-8291

### Toms River, New Jersey Office

1705 Route 37 East  
Toms River, NJ 08753 Tel: 732-573-0490

### Mt. Arlington, New Jersey Office

111 Howard Blvd., Suite 110  
Mt. Arlington, NJ 07856 Tel: 862-284-1100

### Hamilton, New Jersey Office

4 AAA Drive, Suite 103  
Hamilton, NJ 08691 Tel: 609-689-1100

### Freehold, New Jersey Office

3 Paragon Way, Suite 600  
Freehold, NJ 07728 Tel: 732-303-8700

### Phillipsburg, New Jersey Office

755 Memorial Parkway, Suite 110  
Phillipsburg, NJ 08865 Tel: 908-454-3080

### Doylestown, Pennsylvania Office

501 N. Main Street  
Doylestown, PA 18901 Tel: 214-345-1876

### Bethlehem, Pennsylvania Office

1685 Valley Center Parkway, Suite 100  
Bethlehem, PA 18018 Tel: 610-332-1772

### Pottstown Pennsylvania Office

2129 East High Street  
Pottstown, PA 19464 Tel: 610-323-4040

## PROFESSIONAL PARTNERS

### Neil I. Van Cleef, Founder

32 Brower Lane  
Hillsborough, NJ Tel: 908-359-8291

### Robert J. Clerico, PE, PP, CME, CPWM

32 Brower Lane  
Hillsborough, NJ Tel: 908-359-8291

### Samuel D. Costanzo, PE

501 N. Main Street  
Doylestown, PA 18901 Tel: 215-345-1876

### Mark A. Bahnick, PE

1685 Valley Center Parkway, Suite 100  
Bethlehem, PA 18017 Tel: 610-332-1772

### Lawrence M. Diffley, PE, PTOE

3 Paragon Way, Suite 600  
Freehold, NJ 07728 Tel: 732-303-8700

### Michael K. Ford, PE, PP

32 Brower Lane  
Hillsborough, NJ Tel: 908-359-8291

### Jeffrey W. Munzing, PE

3 Paragon Way, Suite 600  
Freehold, NJ 07728 Tel: 732-303-8700

### Stanley J. Schrek, PE, AIA, PP, CME, LEED AP

755 Memorial Parkway, Suite 110  
Phillipsburg, NJ 08865 Tel: 908-454-3080

### Herbert J. Seeburger, PE, CME, CPWM

4 AAA Drive, Suite 103  
Hamilton, NJ 08691 Tel: 609-689-1100

# EXECUTIVE SUMMARY

This Executive Summary highlights the key points of Van Cleef Engineering Associates' Statement of Qualifications for the provision of Township and Water/Sewer Utility Pool Engineer. All required information prescribed in the Request for Qualifications is provided in our document.

## **Our Approach**

Van Cleef has been the wastewater engineer for more than two dozen NJ utilities, authorities and municipalities: we provide design, construction services, inspection and operation support to both large and small sewage treatment plants, sewage collection systems, pumping and lift stations, and associated infrastructure assets – all services noted in the RFP.

## **Our People**

The ability of our firm to align with the Township's vision and help achieve your goals depends on people – ours and yours. We can provide the Township with the best technical support in the business with a personal "one-on-one" relationship. Your professionals that manage and operate wastewater infrastructure day in and day out have a wealth of institutional knowledge and history: their drive to fulfil the Township's goals is a resource that we will be honoured to work with.

Van Cleef professionals take pride in helping you achieve your goals, and the expectation is that the people within our organizations will establish and nurture the professional relationships needed to provide success. Van Cleef people are proven, experienced and dedicated professionals – engineers, planners, scientists, surveyors, and licensed operators – who will collaborate with your directors, managers, superintendents, operators and third-party consultants in the pursuit of achieving your goals.

## **Our Commitment**

Van Cleef commits to delivering for the Township. This includes our technical expertise and practical know-how, regulatory knowledge, and most importantly our professional's zeal to meet and exceed your expectations.

In addition to our core engineering services, we will also actively participate in and attend regular, special and emergency meetings of the Township as directed, assist with procurement and bid meetings as directed, be called upon to prepare and/or review reports, permits, applications and bid documents as requested, and prepare correspondence as requested.

We are committed to fostering a communicative, collaborative working environment with Township professionals. As such our interactions can be productive, particularly when dealing with other governmental agencies such as NJDEP.

Van Cleef looks forward to working together with you to understand and deliver our services that meets the Township's vision for the future.

# STATEMENT OF QUALIFICATIONS

The qualified team at **Van Cleef Engineering Associates, LLC (Van Cleef)** provides practical wastewater engineering expertise to our public clientele. Our company is known for its innovative design ideas, as well as our ability to respond to new regulatory requirements and create cost-effective solutions for growing communities.

Van Cleef serves as engineer and consultant to many municipal entities and utility authorities. Our professional staff possesses a diverse range of wastewater and aligned experience that allows us to offer a wide variety of services including:

- › Wastewater Treatment Facilities
- › Wastewater Pumping Stations & Systems
- › Wastewater Permitting
- › Infiltration & Inflow Analyses
- › Industrial Pretreatment
- › Capital Improvement Planning
- › Construction Observation
- › Geographic Information Systems
- › Structural Engineering
- › Water Supply
- › Wastewater Collection & Conveyance Systems
- › Wastewater Process Evaluations
- › Wastewater Operations & Maintenance
- › Wastewater Management Plans & Amendments
- › Asset Management Planning
- › Construction Administration & Program Management
- › Land Surveying
- › Geotechnical Engineering
- › MEP & Building Systems Engineering
- › Water Treatment, Storage, & Distribution

Van Cleef has been the water engineer for more than two dozen municipalities and the design engineer for numerous land developers. Current Van Cleef staff members have extensive experience assisting municipalities with the design, construction and operation of potable water systems. With changing standards, regional growth and development, and limited surface water and groundwater allocations, Van Cleef's experience is based upon the challenge of meeting the ever-growing demand for clean, safe water.

Wastewater collection and treatment are fundamental public needs that have a significant impact on community environmental conditions and development potential. Van Cleef engineering professionals develop innovative solutions to meet the needs of existing communities and to provide for additional growth. We are also involved in the day-to-day operation of municipal utilities to assist facility owners with meeting performance requirements at minimal treatment costs.

Van Cleef professionals can review proposed expansions of existing water and wastewater systems to accommodate new development, along with capital project planning and budget analyses. Consulting is available on operation-related issues and compliance with State and Federal regulations.

We have many years of experience in acquiring approvals and permits for wastewater collection and treatment systems as well as water distribution systems. The firm has prepared environmental studies complying with the NJDEP criteria for both private and public sector clientele. We specialize in a variety of environmental issues and can readily assemble a team of experienced professionals to respond to your needs.

Van Cleef staff members have extensive experience assisting municipalities and authorities with the design, construction and operation of numerous wastewater conveyance, treatment, and infrastructure projects including sewer interceptor upgrades and rehabilitations, pump station upgrades, system expansions and treatment plant expansion/upgrades.

# STATEMENT OF QUALIFICATIONS

**Water and Wastewater** – Our Team serves as engineering consultant to a large number of water and wastewater utility agencies of varying sizes and daily flows, many of which are significant.

A full range of services is provided including planning, design and construction administration of a wide variety of capital projects including water and sewage treatment plants, pump stations and force mains, water production wells, potable water storage tanks, collection and distribution systems, and other sanitary and environmental projects. Our Team also performs infrastructure feasibility studies and master plans, a variety of water distribution and storage studies, sewer system evaluation surveys and water and sewer system valuation studies.

Additional services provided include review of proposed expansions to our client's water and wastewater systems to accommodate new developments, along with capital project planning and budget analysis. Assistance is also provided with operations related issues and application of new state and federal regulations.

**Federal and State Permits** – We have many years of experience in acquiring both Federal and State approvals and permits for the construction of drainage, wastewater collection and treatment systems and water distribution and treatment systems and improvements. Some of the agencies from which these approvals have been received include the NJ Department of Environmental Protection, NJ Department of Community Affairs, NJ Department of Transportation, United States Army Corps of Engineers, and many local agencies.

**Grant Writing and Administration** – We have many years of experience assisting clients with grants and low interest loan funds through various Federal and State agencies. Our experiences include preparation of documentation from initial inquiry, evaluations required to support the application, application preparation and submission, construction and grant administration, and project closeout. Examples of these loans and grants include awards from USDA, NJ Infrastructure Bank, NJ Environmental Infrastructure Trust, New Jersey Highlands Council, NJDEP and NJDOT.

**Capital Infrastructure Design & Specifications** – We have many years of experience in preparing design drawings and securing all required permits for projects ranging from minor drainage plans to be constructed using in-house forces, through major capital improvement projects with contract costs in excess of \$20 million. Services provided for such projects have included the preparation of funding applications, permit applications, design drawings, bid specifications and related bid documents, administration of the bidding process, review of successful bidders, recommendations for award and execution of contracts, construction inspection, construction supervision, and the processing of paperwork through various funding agencies.

Our Team also has prepared designs for a variety of roadway projects. The team has a great deal of experience with improvements to existing streets where existing infrastructure, adjacent buildings, properties and landscaping were to be preserved. The firm prides itself on its ability to prepare unique designs compliant with prevailing design standards while maintaining the character of the project area.

**Geotechnical Engineering** – We provide a complete range of geotechnical engineering services for highways, bridges and structures. We can explore the subsurface soil and groundwater conditions using test borings and test pits. We can provide geotechnical engineering, and soil properties assessment of the encountered subsurface materials. Our Team evaluates site foundation conditions and provide recommendations relative to the support and sub-drainage requirements for foundation construction. Our geotechnical engineers have provided soils and foundation reports for the NJDOT and various NJ County Departments of Public Works.

Our Team has performed Dam inspections, completed hydrologic and hydraulic analyses including dam break analyses. We have designed new spillways and rehabilitated dams to contain the design storm. We are approved by NJDOT to perform dam inspection and design and currently hold the multi-year contract for the inspection of NJDOT dams.

# STATEMENT OF QUALIFICATIONS

**Construction Management and Inspection** - We maintain a complement of experienced construction inspectors and related supervisory staff. Our construction inspectors have gained experience from prior extensive training, on-the-job experience along with experience as site contractors and public works superintendents. This depth of experience enables our staff to insure compliance with municipal codes and ordinances, develop agreements, and approved plans. Our Team ensures that performance bonds and inspection fees are tracked according to applicable standards.

**Land Surveying** - Our Team includes many licensed land surveyors. Our surveyors have extensive experience in performing private land surveys, title surveys and major boundary surveys for private clientele, local municipalities, and county government as well as state and federal governments. Many of these surveys have included the determination of existing property lines and roadway rights-of-way, preparation of right-of-way acquisition plans, preparation of metes and bounds descriptions, setting of right-of-way monumentation and researching deeds of record, including Road Returns, to determine the historical nature of the particular street of concern and provide a basis for the establishment of right of way.

**Unmanned Aerial Service** – Our Team consists of FAA licensed remote pilots who utilize the latest UAS technology and LIDAR to deliver accurate, up-to-date site information in a safety conscience and cost efficient manner. Our remote pilots work hand-in-hand with field inspectors, land surveyors, and project managers, empowering them to work more efficiently and with more data than ever before.

**Geographic Information Systems** – Geographic Information Systems, also known as GIS, is simultaneously a software as well as science used for creating, managing, analyzing, and visualizing spatial data. As technology continues to progress, GIS has offered revolutionary solutions to the way we identify problems, monitor changes, set priorities, manage assets, and gives us insight into the future in quantifiable ways. At Van Cleef, we use this technology to support our Professional Planners, Engineers, Surveyors, Architects and Clients by providing expertise in GIS. As a result, the reports that are written, and the deliverables our clients receive are enriched with meaningful data that comes to life in front of their eyes. Gone are the days that maps are constrained to physical mediums, with the advances of interactive web map applications that offer the user a dynamic experience, we are revolutionizing the way we design our communities and manage our infrastructure and resources. We are at a unique cornerstone of technological history, and it is our responsibility to ensure spatial information and local knowledge is preserved as it makes its way from the minds of our clients, paperwork stuffed in a cabinet somewhere, and recover that which has already been lost onto a digital platform, safe for generations to come.

# SECTION 2. REPRESENTATIVE CLIENTS, PROJECT EXPERIENCE & REFERENCES

---

## REPRESENTATIVE CLIENTS – WATER/WASTEWATER AUTHORITIES

| County, State | Organization                                     |
|---------------|--|
| Hunterdon, NJ | Lambertville Municipal Utilities Authority       |
|               |  |
| Mercer, NJ    | East Windsor Municipal Utilities Authority       |
|               |  |
| Monmouth, NJ  | Bayshore Regional Sewerage Authority             |
|               | Long Branch Sewerage Authority                   |
|               | Manasquan River Regional Sewerage Authority      |
|               | Middletown Township Sewerage Authority           |
|               | Western Monmouth Utilities Authority             |
|               |  |
| Morris, NJ    | Parsippany-Troy Hills Sewer Utility              |
|               |  |
| Ocean, NJ     | Berkeley Township Municipal Utilities Authority  |
|               | Brick Township Municipal Utilities Authority     |
|               | Jackson Township Municipal Utilities Authority   |
|               | Lakewood Township Municipal Utilities Authority  |
|               | Ocean County Utilities Authority                 |
|               | Plumsted Municipal Utilities Authority           |
|               | South Toms River Sewerage Authority              |
|               |  |
| Sussex, NJ    | Hardyston Township Municipal Utilities Authority |

# REPRESENTATIVE CLIENTS – MUNICIPAL ENTITIES

| County, State  | Organization                                    |
|----------------|---|
| Essex, NJ      | South Orange Village Township                   |
|                |   |
| Gloucester, NJ | Maryville (Franklinville, NJ)                   |
|                |   |
| Hunterdon, NJ  | Alexandria Township                             |
|                | Bethlehem Township                              |
|                | Clinton (Town)                                  |
|                | Delaware Township Zoning Board of Adjustment    |
|                | East Amwell Township                            |
|                | Flemington Borough Planning Board               |
|                | Frenchtown Borough Land Use Board               |
|                | Holland Township Land Use Board                 |
|                | Kingwood Township                               |
|                | Readington Township                             |
|                | Tewksbury Township                              |
|                | Union Township                                  |
|                |   |
| Mercer, NJ     | Hamilton Township – Division of Water Pollution |
|                | Hopewell Township                               |
|                | Robbinsville Township                           |
|                | West Windsor Township                           |
|                |   |
| Middlesex, NJ  | Cranbury Township                               |
|                |   |
| Monmouth, NJ   | Allentown Borough                               |
|                | Oceanport Borough                               |
|                | Sea Bright Borough                              |
|                |   |

# REPRESENTATIVE CLIENTS – MUNICIPAL ENTITIES

| County, State    | Organization                 |
|------------------|------------------------------|
| Morris, NJ       | Chatham Borough              |
|                  | Chester Borough              |
|                  | Long Hill Township           |
|                  | Mt. Olive Township           |
|                  | Washington Township          |
|                  |                              |
| Ocean County, NJ | Barnegat Township            |
|                  | Bay Head Borough             |
|                  | Berkeley Township            |
|                  | Brick Township               |
|                  | Harvey Cedars Borough        |
|                  | Island Heights Borough       |
|                  | Lacey Township               |
|                  | Lavallette Borough           |
|                  | Ocean Gate Borough           |
|                  | Plumsted Township            |
|                  | Point Pleasant Borough       |
|                  | Point Pleasant Beach Borough |
|                  | Seaside Heights Borough      |
|                  | South Toms River Borough     |
|                  | Stafford Township            |
|                  |                              |
| Somerset, NJ     | Bridgewater Township         |
|                  | Manville Borough             |
|                  | Neshanic Valley Golf Course  |
|                  | Raritan Borough              |
|                  | Rocky Hill Borough           |
|                  |                              |
| Sussex, NJ       | Franklin Borough             |
|                  | Hardyston Township           |

# REPRESENTATIVE CLIENTS – MUNICIPAL ENTITIES

| County, State    | Organization        |
|------------------|---------------------|
| Sussex, NJ cont. | Hopatcong Borough   |
|                  | Lafayette Township  |
|                  | Ogdensburg Borough  |
|                  | Stillwater Township |
|                  | Sussex Borough      |
|                  | Walpack Township    |
|                  |                     |
| Warren, NJ       | Alpha Borough       |
|                  | Harmony Township    |
|                  | Knowlton Township   |
|                  | Phillipsburg (Town) |
|                  | Washington Borough  |
|                  | Washington Township |
|                  |                     |

# Water Storage Tank Replacement

Borough of Island Heights | Ocean County, New Jersey



**Van Cleef** was contracted by the Borough of Island Heights to provide design, bidding and construction services for the replacement of their existing water storage tank with a new 250,000 gallon pedestal style tank. Project was triggered following a successful study of the area and research into water storage tank styles to determine the best fit for the Borough.

Responsibilities included preparation of contract documents, coordination with NJDEP, review of bids, preparation of award notice, inspection of installation,, directly speaking with residents, client, contractor and government agencies, preparation of payment applications, change order, closeout documents and overall coordination.

## CLIENT CONTACT

Borough of Island Heights

## PROJECT HIGHLIGHTS

- ↳ Municipal Client
- ↳ Utility Coordination
- ↳ Design, Bidding and Construction Services
- ↳ NJDEP Permitting

## Potable Water Supply Well #9

Borough of Island Heights | Ocean County, New Jersey



Van Cleef was contracted by the Borough of Island Heights to provide design, permitting, bidding and construction services for the installation of water supply well No. 9. The project was funded through the NJDEP Infrastructure Trust program.

Responsibilities included preparation of contract documents, NJDEP Bureau of Drinking Water, soil erosion and infrastructure trust permitting, review of bids, preparation of award notice, inspection of installation, coordination with client, contractor and government agencies, preparation of payment applications, change order, closeout documents and overall coordination.

### CLIENT CONTACT

Borough of Island Heights

### PROJECT HIGHLIGHTS

- ↳ Municipal Client
- ↳ Utility Coordination
- ↳ NJDEP Funded
- ↳ NJDEP Permitting
- ↳ Design, bidding and construction services

## Water Meter Installations

Township of Lakewood | Ocean County, New Jersey



Van Cleef was tasked with design, bidding and construction services related to the Water Meter Installations in the Original Leisure Village (OLV) and Leisure Village East (LVE) retirement community sections of the LTMUA's service area. LTMUA was desirous of installing eight (8) new water meter vaults in OLV and three (3) replacement water meters in existing vaults that are to remain in LVE. Van Cleef designed a total of eleven (11) water meter vaults which involved isolating the flow outside of the vault on both ends. Design for Insertion valves installed on the mains where existing valves are not available to isolate the vault were also included. A bi-directional water flow meter was installed inside all the vaults. Eleven (11) new concrete tops for each vault (new and existing) were also installed.

Additionally, Van Cleef provided construction services including hosting of preconstruction meeting, review of submittals, preparation of payment applications and change orders, attendance of periodic construction meetings, documenting daily construction reports, maintaining as built drawings, witness testing and commissioning of each chamber, preparation of record drawings and final closeout of the project.

### CLIENT CONTACT

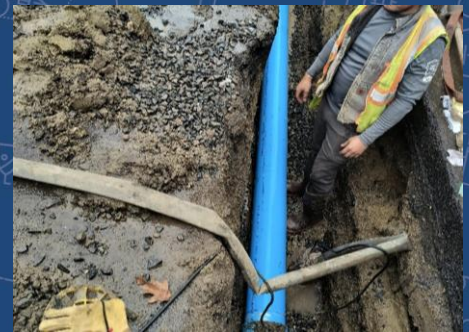
Lakewood Township  
Municipal Utilities Authority

### PROJECT HIGHLIGHTS

- Corrected metering station inaccuracies
- Designed a hi-level bypass
- Obtaining NJDOT and Ocean Count Road Opening Permits
- Detailed coordination and construction techniques prepared
- Utility Coordination

## Lake Drive Water Main Extension

Borough of Island Heights | Ocean County, NJ



Van Cleef was contracted by the Borough of Island Heights to provide design, bidding, and construction services for the installation of an 8-inch C900 PVC water main extension along Lake Drive. The project involved the replacement and abandonment of the Borough's existing 4-inch asbestos cement and cast-iron water mains, installation of approximately 1,174 linear feet of new PVC main, and reconnection of residential and commercial services. The project also included installation of tapping valves, insertion valves, hydrants, thrust blocks, and final surface restoration. The project was completed on time and within budget, finalizing the Borough's water main replacement along Lake Drive.

### CLIENT CONTACT

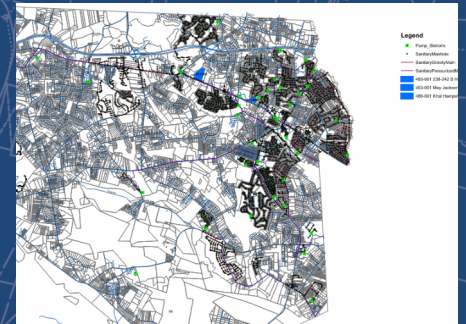
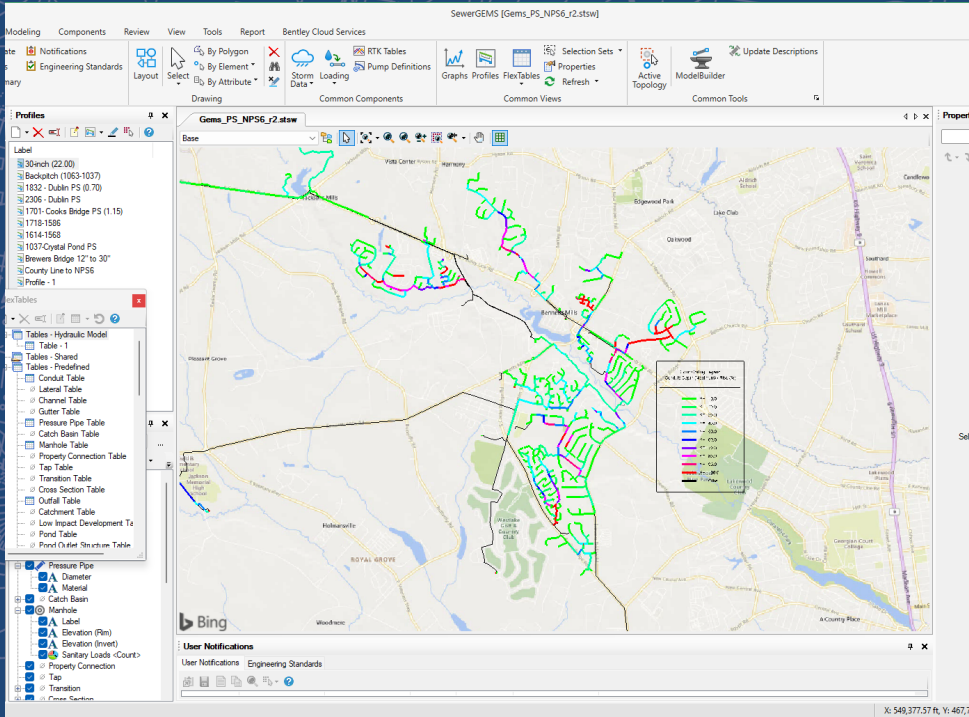
Borough of Island Heights  
Ocean County, NJ

### PROJECT HIGHLIGHTS

- Water Main Design and Replacement
- Utility Coordination
- Bidding and Construction Management
- Service Connection Replacements
- Valve and Hydrant Installation
- Site Restoration
- Completed Within Budget and Schedule

# Sewer Master Plan Amendment

Township of Jackson | Ocean County, NJ



Van Cleef was tasked with performing a comprehensive amendment of their existing Sanitary Sewer Master Plan due to anticipated residential, commercial, institutional and industrial growth in the Township of Jackson (Township). The adoption of the Amended Sanitary Sewer Master Plan provided the Authority with a revised document consisting of a background summary of the existing sanitary sewer conveyance system main interceptor trunk lines that will be considered a living document and that will require constant and frequent updating. The report also addressed the changing conditions to project future collection system expansions and detail the Authority's plan for meeting service demand, future development and growth projections. The goal of the amended plan was to identify areas of the system where expansion of interceptors and regional pump stations were prudent to keep up with the growing population and development.

As part of the amended report, data was obtained and reviewed from the Authority's existing GIS sewer system including the existing master plan, record drawings and Authority sewer billing data in order to generate an enhanced GIS database. Revisions incorporated into the database generally included removal of old/abandoned sanitary sewer, sewers not identified by Authority as main line interceptors, validation of manhole connectivity, input and normalization of invert elevations throughout the system, input of pipe size and material information as needed, and review of connectivity with adjoining public entities.

Once the sewer flows were fully assigned throughout the network, the SewerGEMS model was ready to be computed. Since capacity of the sewer system under extreme is the key criteria for regulatory compliance, calculation parameters were tuned to minimize the continuity error – the difference between how much sewage was loaded into the model and how much sewage came out of the model. The hydraulic model will routinely be updated to provide refined results for sewer with small tributary areas. The hydraulic model is a living document which can only improve through continued input of accurate data.

## CLIENT CONTACT

Earl Quijano  
Principal Engineer  
Jackson Township Municipal Utilities  
Authority  
135 Manhattan Street  
Jackson, New Jersey 08527  
(732) 928-2222

## PROJECT HIGHLIGHTS

- Hydraulic modelling and analysis with SewerGEMS
- ArcGIS mapping
- Update of WQMP and 208 Mapping
- Sewer Service Area Revisions
- Buildout Analysis of Collection System

# Oakhurst Wastewater Treatment Plant Facility Assessment

Oakhurst | Monmouth County, NJ



**Van Cleef** performed a comprehensive assessment of the Township of Ocean Sewerage Authority's 7.5 MGD PurOx activated sludge wastewater treatment plant. The project included field investigations, condition assessments, and reviews of plant operations, all leading to updates to the Authority's Asset Management Plan (AMP) and Capital Improvement Plan (CIP).

Each unit process was inspected and rated/ranked with regard to both condition and criticality. All recommended improvements were then also sorted by discipline—structural, mechanical, electrical, HVAC, and architectural—and incorporated into 1-, 5-, and 10-year CIP schedules. Improvements in each time horizon were then logically aggregated into appropriate Capital Projects, and funding options were identified for each. The recommended Capital Projects each carefully considered economies of scale, disciplines involved, condition rating and criticality from the AMP, Authority input and the treatment process. Further consideration was given to construction logistics, maintenance of plant operations, and the optimization of Contractor, Subcontractor, and Supplier procurement practices to yield the most cost-effective project possible.

The updated AMP and CIP provide a prioritized roadmap for an infrastructure investment and funding strategy that supports sustainable long-term plant performance.

## CLIENT CONTACT

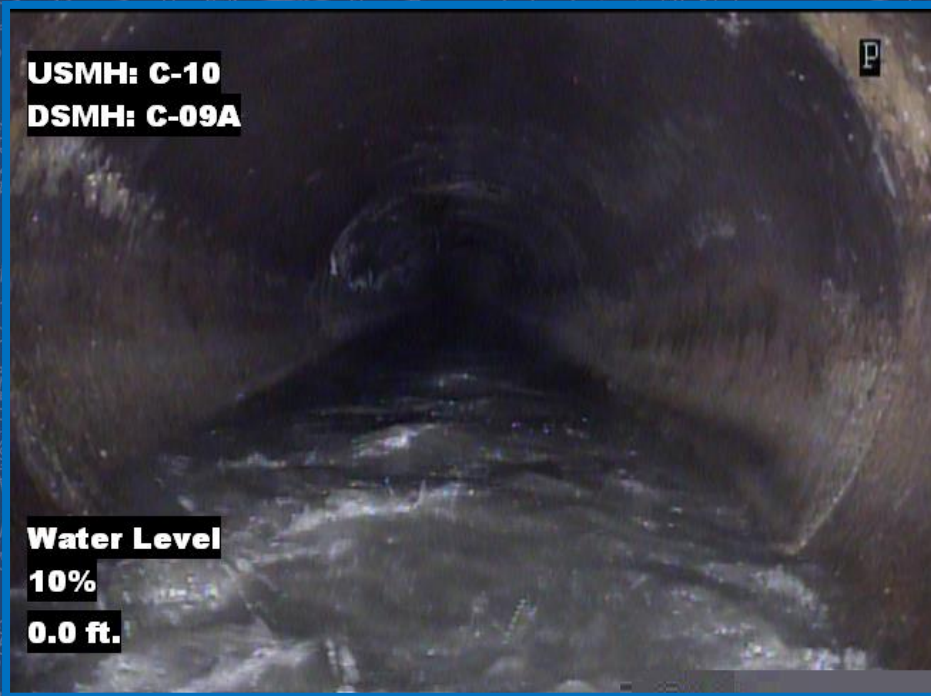
Township of Ocean Sewerage Authority  
Ocean Township  
Monmouth County, NJ

## PROJECT HIGHLIGHTS

- Condition Assessment and Field Inspections
- Asset Management Planning
- Capital Improvement Plan Development
- Structural, Electrical, and Mechanical Review
- Process Optimization Recommendations
- Facility Asset Inventory and Criticality Ratings
- Funding Strategy and Implementation Support

# Annual TV & Cleaning of Authority Interceptor System – Phases 1 through 4

Borough of Keyport, Union Beach & Township of Hazlet | Monmouth County, New Jersey



# BRSAA



Van Cleef was tasked with providing construction services for the Annual TV & Cleaning of Authority Interceptor System project. The project has been broken into four (4) phases starting in 2020 (Phase 1) until 2024 (Phase 4). The intent of the program is to maintain the Authority's collection system and be proactive in performing necessary repair work before it becomes a serious or emergency problem. Emergency repair work is costly and risks sewage overflows, environmental violations, and potential health hazards.

BRSAA operates a sewage collection system consisting of over 60,000 linear feet (LF) of reinforced concrete pipe (RCP) interceptor sewer ranging from 8 to 60-inches in diameter throughout the Bayshore Region. The Authority has created a long-term preventative maintenance program for cleaning and closed-circuit television (CCTV) inspecting its entire interceptor pipe system once every five (5) years. Prior to this long-term program, cleaning and CCTV contracts were performed through a series of small cleaning and CCTV contracts.

During construction, Van Cleef deployed a highly experienced inspector who identified the severity or the potential severity of defects/imperfections found during the CCTV work first hand. The inspector directed the contractor to control the camera viewing and speed to assure accurate identification of potential problem areas. This was vital to the project since our report did not depend solely on contractors' records to determine the condition of the sewers with respect to identifying structural defects and eventually rehabilitation procedures.

Following the CCTV inspection work, Van Cleef reviewed the findings and prepared a report to the Authority on its recommendation for necessary repairs, prioritizing the most severe problems with construction cost estimates.

## CLIENT CONTACT

Bayshore Regional Sewerage Authority

## PROJECT HIGHLIGHTS

- Utility Coordination
- Field Investigations
- Condition Assessment
- CCTV Review
- Multiple Phases

**RELEVANT PROJECT LIST (WASTEWATER)**

**PROJECT:** WASTEWATER TREATMENT PLANT FACILITY ASSESSMENT  
**CLIENT:** TOWNSHIP OF OCEAN SEWERAGE AUTHORITY, MONMOUTH COUNTY, NJ  
**SERVICES:** Van Cleef was tasked with performing a comprehensive assessment of the Township of Ocean Sewerage Authority's (TOSA) existing 7.5 MGD Purox activated sludge wastewater treatment plant (WWTP). The work included field investigations, condition assessment, updating of an exiting Asset Management Plan (AMP), and preparation of Capital Improvements Plan (CIP) projects in 1-, 5- and 10-year increments.

**PROJECT:** GLENBOURNE PUMPING STATION UPGRADES  
**CLIENT:** TOWNSHIP OF BOONTON, MIDDLESEX COUNTY, NJ  
**SERVICES:** Van Cleef was tasked with the design, bidding and construction services for the Glenbourne Pump Station upgrade project. The project scope of work included the conversion of an existing Smith and Loveless-style pump station to a submersible-style station. The work included replacement of pumps, abandonment of existing below grade drywell, installation of bypass connection, redirecting three (3) influent sewers into wet well into singular connection, replacement of electrical components and controls, and site improvements.

**PROJECT:** JACKSON TOWNSHIP METERING STATION IMPROVEMENTS  
**CLIENT:** OCEAN COUNTY UTILITIES AUTHORITY  
**SERVICES:** Design and construction services to correct metering inaccuracies occurring during low flow periods as the differential meters were too large to accurately record flow. OCUA metering problems were corrected by isolating Jackson's wastewater flow by removing it from an interceptor, pumping through a smaller meter chamber and returning the flow back to OCUA's interceptor.

**PROJECT:** SANITARY SEWER EXTENSION AND PUMP STATION ABANDONMENT  
**CLIENT:** JACKSON TOWNSHIP MUNICIPAL UTILITIES AUTHORITY  
**SERVICES:** Preparation of construction plans and specifications for the decommissioning of the Oakley Hills Pump Station, replacement of 365 LF of 8-inch sanitary sewer and installation of 974 LF of 8-inch sanitary sewer remains.

**PROJECT:** SANITARY SEWER TRENCHLESS REHABILITATION PROJECT  
**CLIENT:** JACKSON TOWNSHIP MUNICIPAL UTILITIES AUTHORITY  
**SERVICES:** Preparation of construction plans and specifications for repairing the Authority's sanitary sewer system. The project consists of 37 CIP spot repairs, 5,000 linear feet of CIP main line pipe lining, 10 CIP service lateral linings, 14 deep house stack chemical groutings, 29 manhole linings/groutings and 14 service lateral cleanout installations. Alternate bids were also taken for construction of 270 more active service lateral cleanouts.

**PROJECT:** FLAIR PUMP STATION EMERGENCY REPAIRS  
**CLIENT:** JACKSON TOWNSHIP MUNICIPAL UTILITIES AUTHORITY  
**SERVICES:** Preparation of construction plans and Request for Quotations (RFQ) to repair a severely corroded concrete wetwell. Work included construction of pump station bypass facilities, manhole grouting and lining to repair corrosion damage and prevent future chemical attacks on concrete wetwell structure, installation of new trash baskets, removal and replacement of wetwell top slab and access hatch, maintenance of sewage flow while repairs are being made, pump pulley and belt replacement to increase pump capacity and site and wetwell lighting installation. Project included Contract Administration Services.

**PROJECT:** SANITARY SEWER EVALUATION – PHASES 1 THROUGH 6  
**CLIENT:** JACKSON TOWNSHIP MUNICIPAL UTILITIES AUTHORITY  
**SERVICES:** Preparation of construction plans, specifications and perform Contract Administration services for cleaning and televising over 75 miles of sewer ranging from 8 inch – 30 inch diameter in each respective phase. Work also included chemically sealing defective joints, CIP point repairs and service lateral inspections.

**PROJECT:** MISCELLANEOUS TRENCHLESS TYPE SEWER REPAIRS  
**CLIENT:** JACKSON TOWNSHIP MUNICIPAL UTILITIES AUTHORITY  
**SERVICES:** Preparation of construction plans, specifications and perform Contract Administration services for Trenchless sewer system point repairs that included 21 CIP spot repairs, 8 manhole cementitious linings and 9 leaking joints chemically sealed (grouted).

**PROJECT:** MISCELLANEOUS EXCAVATION TYPE SEWER REPAIRS  
**CLIENT:** JACKSON TOWNSHIP MUNICIPAL UTILITIES AUTHORITY  
**SERVICES:** Preparation of construction plans, specifications and perform Contract Administration services for sewer collection systems requiring excavation work to repair. Project includes 5 main line spot repairs, 25 manhole frame and cover replacements and 30 cleanout installations.

**PROJECT:** HAMPSHIRE HILLS PUMP STATION RENOVATION  
**CLIENT:** JACKSON TOWNSHIP MUNICIPAL UTILITIES AUTHORITY  
**SERVICES:** Conversion of a troublesome wetwell mounted pump station to a submersible sewage pumping facility. Project included master planning sewer service area, pump design utilizing existing facilities and piping and preparation of construction plans, specifications and perform Contract Administration services. Work includes existing pump station demolition work, installation of bypass manhole, maintenance of sewage flows, relocation of existing control panels, lighting and telephone facilities, installation of duplex pump complete with rails, piping, valves, access hatch and appurtenances and installation of retaining wall.

**PROJECT:** BENNETTS MILLS ROAD CURED IN PLACE SEWER REPAIR WORK  
**CLIENT:** JACKSON TOWNSHIP MUNICIPAL UTILITIES AUTHORITY  
**SERVICES:** Preparation of Request for Quotations (RFQ) for installation of cured in place liner to repair a damaged 116 linear feet 30-inch diameter PVC trunk sewer. Project included contract administrative services.

**PROJECT:** FEASIBILITY STUDY OF BROOKWOOD 3 DRAINAGE BASIN  
**CLIENT:** JACKSON TOWNSHIP MUNICIPAL UTILITIES AUTHORITY  
**SERVICE:** Evaluation of gravity sewer replacement alternatives necessary to alleviate sewer overflows and backups on County Line Road, Hampshire Boulevard and Villanova Drive. Evaluation included extensions and/or relocation of several pump station force mains.

**PROJECT:** LATERAL CLEANOUT CONSTRUCTION PHASE I, II, AND III  
**CLIENT:** JACKSON TOWNSHIP MUNICIPAL UTILITIES AUTHORITY  
**SERVICES:** Preparation of construction plans, specifications and perform Contract Administration services for lateral cleanout construction totaling approximately 150, 140 and 110 cleanouts for Phases I, II and III respectively.

**PROJECT:** INFILTRATION/INFLOW STUDY  
**CLIENT:** BOROUGH OF ISLAND HEIGHTS  
**SERVICES:** Investigation and evaluation of the Borough's sewer system. Repairs to sources of inflow resulted in substantial savings to the Borough.

**PROJECT:** OCEAN AVENUE SEWER REHABILITATION  
**CLIENT:** BOROUGH OF ISLAND HEIGHTS  
**SERVICES:** Preparation of construction drawings and specifications to replace an antiquated troublesome sewer.

**PROJECT:** NORTHSIDE SEWER EXTENSION  
**CLIENT:** BOROUGH OF ISLAND HEIGHTS  
**SERVICES:** Prepare contract drawings and specifications for sanitary sewer extension including 166 linear feet of 12-inch diameter pipe and 258 linear feet of 8-inch diameter pipe within existing roadways. The firm also provided the construction management and inspection services for this project.

**PROJECT:** NORTHSIDE SEWER LATERAL RELOCATION  
**CLIENT:** BOROUGH OF ISLAND HEIGHTS  
**SERVICES:** Preparation of contract drawings and specifications and provide construction management and inspection services to relocate eleven sanitary sewer laterals.

**PROJECT:** RIVERSIDE TO CHESTNUT AVENUE TRUNK SEWER REHABILITATION  
**CLIENT:** BOROUGH OF ISLAND HEIGHTS  
**SERVICES:** Preparation of Plans and Specifications for testing and chemically sealing approximately 1,650 linear feet of sewer main pipe and provide the construction management and inspection services.

**PROJECT:** SEWAGE PUMP STATION RENOVATIONS  
**CLIENT:** BOROUGH OF ISLAND HEIGHTS  
**SERVICES:** Preparation of construction plans and specifications and provide construction management for the renovation of two (2) sewage pump stations. The work included installation of one (1) duplex, prefabricated grinder pump station within an existing wetwell and one (1) duplex grinder pump, rail assembly, and control panel replacement, and force main slip lining.

**PROJECT:** CLEAN AND TV INSPECTION OF SANITARY SEWER COLLECTION SYSTEM  
**CLIENT:** BOROUGH OF SEASIDE HEIGHTS  
**SERVICES:** Preparation of plans, specifications and perform inspection services for cleaning and televising 45,000 ft. of TCP ranging in size from 8 inches – 15 inches in diameter. TV inspection work will provide data for determining cost effective sewer system rehabilitation procedures necessary to remove infiltration. Groundwater infiltration accounts for over 50% of the Borough's sewage flow.

**PROJECT:** CURED-IN-PLACE SEWER MAIN LINING Phase SA1 through SA4  
**CLIENT:** BOROUGH OF SEASIDE HEIGHTS  
**SERVICES:** Preparation of construction drawings and specifications for installation of cured-in-place liners in approximately 7 miles of 8-inch, 10-inch, 12-inch and 15-inch diameter sewer mains. The firm also provided Construction Management Services for this USDA – Rural Development funded project.

**PROJECT:** GRANT AVENUE SANITARY SEWER REPLACEMENT  
**CLIENT:** BOROUGH OF SEASIDE HEIGHTS  
**SERVICES:** Preparation of construction drawings and specifications for replacement of approximately 775 linear feet of 12-inch and 15-inch diameter sanitary sewer main including manholes, house service connections and surface restoration. The firm also provided Construction Management Services.

**PROJECT:** OCEANSIDE STREETS SEWER REPLACEMENT AND STREET RE-PAVING

**CLIENT:** BOROUGH OF LAVALLETTE

**SERVICES:** Preparation of construction plans and specifications and perform contract administration services for replacement of 3000 feet of sanitary sewer, 120 service laterals and 44 manhole covers and frames with water tight units and restore roadway with stabilized base course, milling and complete street overlays. Work also consists of select driveway, sidewalk and curb replacement.

**PROJECT:** SANITARY SEWER INFILTRATION/INFLOW REMOVAL

**CLIENT:** BOROUGH OF LAVALLETTE

**SERVICES:** Prepare contract plans, specifications and construction administration and inspection services for the systematic removal of infiltration/inflow in the Borough's sanitary sewer collection system. A list of infiltration/inflow removal contracts follows:

Phase I Contract: Pipe removal/replacement construction including approximately 1,000 linear feet of 8-inch pipe, 600 linear feet of 18-inch pipe, 600 linear feet of 21-inch pipe and 200 linear feet of 20-inch pipe.

Phase IA Contract: Pipe lining construction including approximately 10,000 linear feet of 8-inch pipe, 200 linear feet of 10-inch pipe, 300 linear feet of 12-inch pipe, 1,100 linear feet of 15-inch pipe and 1,400 linear feet of 18-inch pipe, manhole and service lateral grouting.

Phase IB Contract: Pipe removal/replacement construction including approximately 1,300 linear feet of 8-inch pipe and 300 linear feet of 12-inch pipe.

Phase II Contract: Pipe lining construction including approximately 22,000 linear feet of 8-inch pipe, 2,000 linear feet of 12-inch pipe, 3,000 linear feet of 15-inch pipe, manhole and service lateral grouting.

Service Lateral Cleanout Construction, Phases I and II Contracts: Lateral cleanout construction totaling approximately 800 and 1,000 cleanouts for Phase I and Phase II respectively.

Service Lateral Sealing, Contracts 1 and 2: Chemically sealing of approximately 400 laterals in each Contract.

Drainage Basins #4 and #5, Phase I and II Contracts: Test and sealing of approximately 10,200 linear feet of 8-inch pipe, 600 linear feet of 10-inch pipe and 1,650 linear feet of 12-inch pipe; Cured-in-Place sewer main lining of approximately 3,100 linear feet of 8-inch, 260 linear feet of 10-inch and 300 linear feet of 12-inch diameter pipe including grouting the connection of 74 laterals. Project also included 6 excavation type spot repairs, 20 CIPP lining (no dig) spot repairs.

Cured-in-Place (CIP) Service Lateral Repair, Phase I and II Contracts: Installation of CIP Liners through a 4|| diameter clean-out to seal the laterals transition from 4-inch diameter to 6-inch diameter pipe in approximately 90 laterals for Phase I and 130 laterals in Phase II.

Miscellaneous Cured-in-Place Pipe Repair Project: Installation of 13 CIP spot repairs to abandon inactive services; extend 19 service laterals currently abandoned in the roadway and construct cleanout at the curbline; CIP line 59 service laterals and 10 service lateral replacements.

Clean and TV Sanitary Sewer System: Clean and closed circuit television inspect approximately 1660 services and 69,000 linear feet of sanitary sewer ranging in diameter from 8-inch to 21- inch; repair pipe defects found during TV inspection by chemical grout and CIP repairs.

**PROJECT:** SANITARY SEWER METER STATION IMPROVEMENTS  
**CLIENT:** OCEAN COUNTY UTILITIES AUTHORITY  
**SERVICES:** Preparation of construction plans and specifications for repair of 3 billing parshall flume meter stations with flumes ranging in size from 9 inches to 36 inches. Work includes flume repairs, installation of new and larger flumes, entrance channel extensions and reconstruction to eliminate turbulence that caused meter inaccuracies and construction of a flow diversion chamber.

**PROJECT:** DEWY MEADOWS VILLAGE PUMP STATION DESIGN - WARREN TOWNSHIP  
**CLIENT:** GARDEN HOMES DEVELOPMENT  
**SERVICES:** Preparation of construction drawings for a sewage pump station with emergency power necessary to service approximately 150,000 SF of commercial property.

**PROJECT:** REHABILITATION OF CROWN COURT PUMP STATION - WARREN TOWNSHIP  
**CLIENT:** GARDEN HOMES DEVELOPMENT  
**SERVICES:** Inspect, test, as-built and prepare construction plans to rehabilitate an existing 150 GPM pump station serving a housing development and commercial site.

**PROJECT:** BRANDON FARMS PUMP STATION UPGRADE  
**CLIENT:** HOPEWELL TOWNSHIP, MERCER COUNTY, NJ  
**SERVICES:** The Brandon Farms pump station was upgraded with 3 new pumps, new valves and piping, VFDs and new control panel. This station discharges via a force main.

**PROJECT:** PRINCETON FARMS PUMP STATION UPGRADE  
**CLIENT:** HOPEWELL TOWNSHIP, MERCER COUNTY, NJ  
**SERVICES:** The Princeton Farms pump station is currently (2018) under construction with bypass pumping in place while the construction occurs. There are no VFDs with this upgrade. A muffin monster grinder is also being replaced. This station discharges via a force main.

**PROJECT:** SOUTH POST ROAD PUMP STATION REHABILITATION  
**CLIENT:** WEST WINDSOR TOWNSHIP, MERCER COUNTY, NJ  
**SERVICES:** New wet well interior piping and pump bases for the three submersible pumps, new access hatch, underground fuel tank removal, new above ground fuel storage tank, new building, odor control storage & feed system, paved driveway and new security fence and gate. This station discharges via a force main.

**PROJECT:** CRANBURY BROOK PUMPING STATION  
**CLIENT:** TOWNSHIP OF CRANBURY, MIDDLESEX COUNTY, NJ  
**SERVICES:** This project replaced a wet well/dry well station with a submersible pump station. New construction included a new valve chamber and VFDs among other valves, etc.

**PROJECT:** SOUTH ARLINGTON PUMP STATION  
**CLIENT:** MANVILLE BOROUGH, SOMERSET COUNTY, NJ  
**SERVICES:** Replacement of two grinder pumps and related equipment which had been damaged when the pump station had been submerged for three days by floodwaters caused by Hurricane Irene in 2011. The work also included the replacement of the electrical system, controls and lighting related to the operation of the pump station which had damaged beyond repair. The muffin monster was repaired in 2016.

**PROJECT:** SEWER REHABILITATION PILOT STUDIES  
**CLIENT:** BOROUGH OF LAVALLETTE  
**SERVICES:** Researched a cured-in-place (CIP) pipe lining system that will expand and make a transition between two different pipe diameters. Performed pilot studies that eventually lead to the preparation of technical specification and contract bids for lateral lining projects.

**PROJECT:** MATHIS PLAZA SEWER SERVICE CONSTRUCTION  
**CLIENT:** BOROUGH OF SOUTH TOMS RIVER  
**SERVICES:** Preparation of construction drawings and specifications and construction management for a 332-foot, 6-inch diameter sewer service to Mathis Plaza. The project consisted of a directional bore under State Highway Route 166 and connection to an existing trunk sewer.

**PROJECT:** SLIPLINING STORM OUTFALL PIPE - BROOKFOREST DRIVE  
**CLIENT:** BOROUGH OF SOUTH TOMS RIVER  
**SERVICES:** A severely deteriorated stormwater outfall pipe located through an encumbered easement was on the verge of collapse. To minimize disturbance to the local Residents and avoid severe property and environmental damage, the outfall pipe was sliplined with polyethylene pipe.

**PROJECT:** MISCELLANEOUS SANITARY SEWER PIPE REPLACEMENT PROJECT  
**CLIENT:** BOROUGH OF SEASIDE HEIGHTS  
**SERVICES:** Preparation of construction drawings and specifications for replacement of approximately 1175 linear feet of 8-inch and 15-inch diameter sanitary sewer main including manholes, house service connections and surface restoration. The firm also provided Construction Management Services for this USDA – Rural Development funded project.

**PROJECT:** LATERAL CLEANOUT CONSTRUCTION – PHASES I AND II  
**CLIENT:** BOROUGH OF SEASIDE HEIGHTS  
**SERVICES:** Preparation of construction drawings and specifications for construction of service lateral cleanouts totalling approximately 800 and 900 cleanout for Phase I and Phase II respectively. The firm also provided Construction Management Services for this USDA – Rural Development funded project.

**PROJECT:** SANITARY SEWER METER STATION IMPROVEMENTS  
**CLIENT:** OCEAN COUNTY UTILITIES AUTHORITY  
**SERVICES:** Preparation of construction plans and specifications for repair of 3 billing parshall flume meter stations with flumes ranging in size from 9 inches to 36 inches. Work includes flume repairs, installation of new and larger flumes, entrance channel extensions and reconstruction to eliminate turbulence that caused meter inaccuracies and construction of a flow diversion chamber.

**PROJECT:** HAMPSHIRE HILLS PUMP STATION RENOVATION  
**CLIENT:** JACKSON TOWNSHIP MUNICIPAL UTILITIES AUTHORITY  
**SERVICES:** Evaluation and assessment of the pump station for conversion of troublesome wetwell mounted pump station to a 425 gpm submersible sewage pumping facility. Project included master planning sewer service area, pump design utilizing existing facilities and piping and preparation of construction plans, specifications and perform Contract Administration services. Work includes existing pump station demolition work, installation of bypass manhole, maintenance of sewage flows, relocation of existing control panels, lighting and telephone facilities, installation of duplex pump complete with rails, piping, valves, access hatch and appurtenances and installation of retaining wall.

**PROJECT:** ORTHO PUMP STATION (ROUTE 28)  
**CLIENT:** BOROUGH OF RARITAN, SOMERSET COUNTY, NJ  
**SERVICES:** This project is currently under construction (2018) and is converting a wet well/dry well system into a submersible pumping station. This pump station discharges via force main.

**PROJECT:** WESTWINDS PUMP STATION  
**CLIENT:** MONTGOMERY TOWNSHIP, SOMERSET COUNTY, NJ  
**SERVICES:** Design of a wastewater pumping station and force main approximately 4,100 feet in length to handle wastewater generated from a residential subdivision and existing public schools. The system included a submersible solids handling pumps mounted on slide rails in the pump wet well. All electrical controls and the standby generator were placed in a block wall constructed building. The system discharges to a gravity sanitary sewer system and is owned and operated by the Montgomery Township Public Works Department.

**PROJECT:** DUCK POND RUN PUMP STATION  
**CLIENT:** WEST WINDSOR TOWNSHIP, MERCER COUNTY, NJ  
**SERVICES:** This project replaced one pump and added a backup pump to the system. Several valves were inoperable and were replaced including the main bypass chamber force main valving. This project was completed in early 2018.

**PROJECT:** UPPER ELEMENTARY SCHOOL PUMP STATION  
**CLIENT:** UPPER TOWNSHIP, CAPE MAY COUNTY, NJ  
**SERVICES:** The existing pumps and pump controls were replaced and upgraded. The engineer also evaluated the concrete in the wet well. Part of the project directed the contractor to clean and repair any portions of the concrete that had corroded. After the concrete was repaired, an epoxy coating was applied to the entire surface of the concrete structure to protect the concrete from exposure to H<sub>2</sub>S.

**RELEVANT PROJECT LIST (WATER)**

**PROJECT:** NEW JERSEY INFRASTRUCTURE FINANCING PROGRAM (NJEIFP) APPLICATION FOR WATER STORAGE TANK REPAINTING INCLUDING PLANS AND SPECIFICATIONS

**CLIENT:** BOROUGH OF LAVALLETTE

**SERVICES:** Prepared complete NJEIFP Application for the complete removal of the Borough's 500,000 gallon elevated water storage tank protective coating and repainting the tank inside and out. Services included project report, environmental review and cost estimates, letter of intent, SED, cultural resources, preparation of plans and specifications for a \$1.35 million project.

**PROJECT:** GROUNDWATER RULE COMPLIANCE

**CLIENT:** JACKSON TOWNSHIP MUNICIPAL UTILITIES AUTHORITY

**SERVICES:** Prepared construction plans and specifications necessary to bring JTMUA's nine (9) water supply/treatment facilities into NJDEP Groundwater Rule Compliance. Work also included obtaining NJDEP BSDW permit and preparation of final report summarizing chlorine contact times at all water sources point of entry and submittal of NJDEP GWR Compliance Certifications that 4-log is achieved.

**PROJECT:** WATER TREATMENT PLANT REPLACEMENT

**CLIENT:** BOROUGH OF ISLAND HEIGHTS

**SERVICES:** Construction management and inspection services for the replacement of the Borough's Ion Exchange Water Treatment Plant with a new 750 gpm Greensand Plus Water Treatment Plant that includes backwash decanting, chemical feed system, well interconnections, flow monitoring, treatment, security and fire alarm system and a SCADA monitoring and control system. As part of the Construction Contract for the treatment plant replacement, all flow meters and flow control valves designed to operate through a SCADA System had to be reevaluated and redesigned for plant operations and to meet manufacturers required tolerances. Work included redesigning the water filters face piping, decant facilities and plant flow meter for proper installation, free of up and downstream constructions and maintaining full pipe operations in eight process control meters.

**PROJECT:** WATER STORAGE TANK REPLACEMENT

**CLIENT:** BOROUGH OF ISLAND HEIGHTS

**SERVICES:** Construction management and inspection services for the replacement of the Borough's inefficient, antiquated standpipe with a 250,000-gallon Elevated Water Spheroid. Work also included providing accommodations for cellular carrier equipment installations.

**PROJECT:** EMERGENCY WELL NO. 10

**CLIENT:** BOROUGH OF ISLAND HEIGHTS

**SERVICES:** Provided emergency engineering services necessary to design, construct and permit emergency Well No. 10. Well No. 10 had to be constructed to replace the Borough's only active potable water supply. Well No. 8 that had to be removed from service due to a casing breach.

**PROJECT:** WATER STORAGE TANK REPAINTING

**CLIENT:** BOROUGH OF SEASIDE HEIGHTS

**SERVICES:** Preparation of construction drawings and specifications and provide construction services for the repair and repainting of the 300,000-gallon elevated water storage tank interior and exterior surfaces. Work consisted of coordination with four (4) cellular companies to replace and move inadequate brackets and offsets to allow cleaning and painting of all tank surfaces. All brackets, offset supports and cables were repainted.

**PROJECT:** WATER STORAGE TANK REHABILITATION  
**CLIENT:** BOROUGH OF ISLAND HEIGHTS  
**SERVICES:** Evaluate the condition of the 60-year old 100,000 gallon water storage tank. Prepare Contract Documents for the reconstruction of the upper portion of the tank and painting inside and outside. The firm also provided construction management services.

**PROJECT:** WATER SUPPLY WELL #9  
**CLIENT:** BOROUGH OF ISLAND HEIGHTS  
**SERVICES:** Designed and prepared contract plans and specifications for the construction of a 350-foot deep 500-gpm potable water supply well and well house. Work includes NJDEP permit applications, obtaining funding through the New Jersey Department of Environmental Protection Drinking Water State Revolving Fund (DWSRF) Loan Program and Construction Management Services.

**PROJECT:** INSTALLATION OF WATER METERS  
**CLIENT:** BOROUGH OF SEASIDE HEIGHTS  
**SERVICES:** Provide detailed water meter study and recommendations to the Borough for metering of domestic water services in the Borough. Preparation of contract plans and specifications for water meter/water pit construction to over 2500 existing water services. Provided construction management services for this USDA –Rural Development funded project.

**PROJECT:** LAKE DRIVE WATER MAIN EXTENSION  
**CLIENT:** BOROUGH OF ISLAND HEIGHTS  
**SERVICES:** Preparation of contract plans and specifications for the water main extension of approximately 1,174 LF of new 8” diameter C900 PVC pipe. Work included removal & replacement of approximately thirteen (13) existing house service connections and one (1) commercial building service connection from the new main to the curb stop, abandonment in place of existing of 4” ACP and Cast Iron water main with flowable fill, installation of tapping valves, insertion valves, gate valves, hydrants, fittings, thrust blocks, and general site restoration. The water main and the associated work was completed in a timely fashion without any change orders required. The completion of this project completes the water main replacement along Lake Drive for the Borough. The firm also provided Construction Management Services for this NJDOT Municipal Aid funded project.

**PROJECT:** GLENSIDE DRIVE & KENNEDY DRIVE WATER MAIN REPLACEMENT  
**CLIENT:** TOWNSHIP OF MOUNT OLIVE  
**SERVICES:** Preparation of contract plans and specifications for the water main REPLACEMENT of approximately 2,365 LF of new 6” diameter ductile iron pipe. Work included removal & replacement of approximately thirty-two (32) existing house connections, abandonment in place of 6” ACP water main to be filled with flowable fill, installation of insertion valves, gate valves, hydrants, fittings, thrust blocks, site work including curbing, driveway, driveway apron and decorative stone restoration, landscaping, and general site restoration.

**PROJECT:** STAND-BY EMERGENCY POWER FOR THE DEPARTMENT OF PUBLIC WORKS AND WATER SUPPLY WELL NO. 4  
**CLIENT:** BOROUGH OF LAVALLETTE  
**SERVICES:** Preparation of construction plans and specifications and project Construction Administration and Inspection Services for the combining of two (2) electrical services and providing emergency power (15KW diesel generator) to Well House No. 4, Water Treatment Plant, DPW Building and Borough Fuel Pumps.

**PROJECT:** REDRILL MUNICIPAL WELL No. 5  
**CLIENT:** BOROUGH OF SEASIDE HEIGHTS  
**SERVICES:** Provide construction management services for the redrilling of a 800 gallon per minute potable well, including pilot well, screen and gravel pack design, under reaming and testing.

**PROJECT:** WATER SUPPLY WELL NO. 7  
**CLIENT:** BOROUGH OF SEASIDE HEIGHTS  
**SERVICES:** Preparation of contract plans and specifications for construction of a 1700-foot-deep, 1000 gpm potable water supply well in the Potomac-Raritan-Magothy Aquifer and related equipment. Design included permit applications to the NJ DEP Bureau of Safe Drinking Water and the Bureau of Water Allocation regulatory review agencies.

**PROJECT:** WATER TREATMENT PLANT – CLARIFIER REHABILITATION  
**CLIENT:** BOROUGH OF SEASIDE HEIGHTS  
**SERVICES:** Preparation of construction plans and specifications and perform contract administration services for removal and replacement of two (2) 47-foot diameter clarifiers internal equipment and components.

**PROJECT:** REHABILITATION OF POTABLE WATER SUPPLY WELL NO. 4  
**CLIENT:** BOROUGH OF LAVALLETTE  
**SERVICES:** Designed, permitted, prepared contract documents and performed construction services for the rehabilitation of Well No. 4. Well No. 4 has had a sand problem since it was drilled in 1959. The well was 1515 feet deep and despite the sand it was a reliable water supply. Due to its depth, replacement is a very costly venture that the Borough would like time to plan for. In that regard, a pre-packed (channel-pack) well screen, properly sized to filter out the fine formation sands entering the well, was installed inside the existing inner casing and well screen. Once installed it provides the structural strength of a new screen and will significantly extend the useful life of the well at a reasonable cost. Work consisted of air lifting debris out of the well, redevelopment of the existing screen, gravel pack and formation for the removal of bentonite, iron, manganese, calcium and resetting the gravel pack and replacement of a new well pump.

**PROJECT:** WATER STORAGE TANK REPAINTING  
**CLIENT:** BOROUGH OF LAVALLETTE  
**SERVICES:** Inspection of tank and preparation of contract documents for the re-painting and miscellaneous minor repair work for the Borough's 500,000 gallon fluted elevated column water storage tank. Work consists of repair, cleaning, surface preparation and re-painting of the water tanks interior and exterior surfaces.

**PROJECT:** WATER BOOSTER PUMPING STATION—LAKEWOOD TOWNSHIP  
**CLIENT:** OCEAN COUNTY BOARD OF CHOSEN FREEHOLDERS  
**SERVICES:** Plans and specifications for 1,500 gallon per minute water booster pumping station meeting NFPA standards for the Ocean County Recycling Center. Also provided construction management services.

**PROJECT:** WATER TREATMENT PLANT – CHLORINE CONVERSION  
**CLIENT:** BOROUGH OF OCEAN GATE  
**SERVICES:** Preparation of construction drawings and NJDEP TWA permit necessary for converting chlorine gas (pre and post) iron oxidation and disinfection system to sodium hypochlorite.

**PROJECT:** REHABILITATION OF WATER PRODUCTION - WELL #4

**CLIENT:** BOROUGH OF OCEAN GATE

**SERVICES:** Preparation of construction drawings and specifications for removal and replacement of pumping equipment and motors, well inspection and reconditioning of well, if necessary, and piping, valve and restraint system replacement inside well house.

**PROJECT:** WATER STORAGE TANK CONSTRUCTION

**CLIENT:** BOROUGH OF OCEAN GATE

**SERVICES:** Prepare Engineer's Report to document required size of storage tank, prepare Plans and Specifications and Application to the NJ DEP for a new 200,000 gallon water storage tank and provide construction management services.

# REFERENCES

Below is a representative list of municipal sewer and water entities for which Van Cleef provides consulting engineering services.

## **Hardyston Township Municipal Utilities Authority**

Carrine Piccolo-Kaufer, Township Manager & MUA Administrator

P: (973) 823-7020 ext. 9440

F: (973) 823-7021

Email: [cpiccolo@hardyston.com](mailto:cpiccolo@hardyston.com)

## **Borough of Allendale**

Liz Homan, Borough Council President  
Water, Sewer & Public Utilities Committee Chair  
(201) 707-1665

[lizhoman@Allendalenj.gov](mailto:lizhoman@Allendalenj.gov)

## **Township of Hamilton – Department of Water Pollution Control**

Contact: Carrie Feuer, PE, Director

300 Hobson Avenue

Hamilton Township, NJ 08610

Telephone: 609-581-4140

## **Richland Township Water Authority**

Contact: Timothy Arnold, Executive Director

1328 California Rd, Suite D

Quakertown, PA 18951

Telephone: 215-536-4733

## **Jackson Township Municipal Utilities Authority**

Contact: Earl Quijano, Principal Engineer

135 Manhattan Street

Jackson, NJ 08527

Telephone: 732-928-2222

## **Borough of Island Heights**

Contact: Sean Asay, Borough Clerk

P.O. Box 797 | Wanamaker Municipal Complex

Island Heights, NJ 08732

Telephone: 732-270-6415

## **Lakewood Township Municipal Utilities Authority**

Contact: Justin Flancabaum, Executive Director

390 New Hampshire Avenue

Lakewood, NJ 08701

Telephone: 732-363-4422

## **Ocean County Utilities Authority**

Contact: Keith Marcoon, Executive Director

501 Hickory Lane

Bayville, NJ 08721

Telephone: 732-269-4500

# SECTION 3. STAFF QUALIFICATIONS

---

# STAFF ORGANIZATION CHART



**TOWNSHIP OF BARNEGAT**  
Ocean County, NJ

**Project Principal**

Mark A. Bean, PE, CGP, LEED AP, FIGP  
Vice President, Water/Wastewater

**Construction Inspection**

Timothy O'Donnell  
Francesco Iemma  
Stephen McCutcheon

**Surveying**

Joseph Canada, PLS  
Jeffrey McCall, PLS

**Geotechnical**

Robert Jost, PE

**Water/Wastewater**

John Berens, PE  
Nicholas Brown, PE  
Tyler Evans, PE  
George Papamakariou, PE

**Asset Management, Planning, & Geographic Information Systems**

Irene Battaglia, PE  
Mason Herrman, GISP

**Design/CADD**

Charles Applegate  
Julianne Kalksma  
Thomas Petzold

**Municipal**

Robert Chankalian, PE, CME  
Jeremy Edinger, PE, CME

## SUMMARY OF KEY STAFF

Van Cleef is pleased to provide the Township with an experienced team of highly qualified individuals to perform all professional services required. Below is a brief description of the key staff assigned to be Task Leaders in the various disciplines within the firm. Detailed resumes of each named individual are also included to summarize the qualifications and experience the firm will provide.

**Mark A. Bean, PE, CGP, LEED AP, FIGP** - Mr. Bean will serve as Project Principal and manage all services needed in a cost effective and timely manner. Mr. Bean has more than 3 decades of diverse facility-intensive planning, design, and construction management experience. He has extensive expertise in wastewater treatment and in the design and construction of wastewater infrastructure. He brings a robust skill set that encompasses many complementary disciplines, including site engineering, environmental compliance, stormwater, water treatment and distribution, and the complete delivery of ground-up facilities. He has a demonstrated track record of successful delivery of technically challenging projects in wastewater infrastructure; project, program, and construction management; water, stormwater, and waste treatment; and site and facility environmental characterization, remediation, and preparation.

Mr. Bean will be supported by the following key staff:

**John Berens, PE** – Mr. Berens has more than 47 years experience in the engineering profession, specializing in the water and wastewater field. Mr. Berens has extensive experience in all project phases from system evaluation and studies through design and construction for projects, including inflow/infiltration and sewer system evaluation studies and reports; water system analyses, water supply, treatment, storage and distribution system design and rehabilitation, wastewater collection, treatment and pump station design and rehabilitation.

**Nicholas Brown, PE, CME** – Mr. Brown has provided engineering services for a wide variety of water, wastewater, and municipal engineering projects including design and preparation of plans, specifications, cost estimates, hydraulic modelling, and permitting. He has provided geotechnical services, construction observation, and construction phase engineering services for numerous wastewater treatment plants, wastewater pump stations, process equipment, sanitary force mains, sanitary gravity sewers, water mains, and water supply wells, as well as state, county, and municipal roadway construction projects.

**Tyler B. Evans, PE** – Mr. Evans is a Professional Environmental Engineer licensed in the Commonwealth of Pennsylvania, the State of New Jersey and the State of Connecticut. Mr. Evans has over eight (8) years of experience in capital planning, design, review, and construction management of public and private water and wastewater projects.

**Christopher B. Jepson, PE, LO** – Mr. Jepson has more than 40 years of experience in municipal wastewater/water operations. His knowledge of biological and chemical processes and alternatives in the wastewater field is augmented by his practical experience operating wastewater/water treatment plants and their laboratories. Mr. Jepson has experience in design and operations criteria for collection systems; treatment plants; water distribution systems; wells; and surface water treatment facilities.

**Jeremy J. Edinger, PE, CME**—Mr. Edinger's responsibilities have been focused in the area of municipal engineering, infrastructure, and utility engineering. His experience spans the complete lifecycle of projects, from field reconnaissance to assisting with layout and design, to the preparation of construction plans using computer-aided design software and the preparation of contract specifications and permit applications necessary at local, county and state approvals, to administration and construction inspection. He has assisted with the planning and design of water and wastewater treatment systems, rehabilitation of water supply wells, gravity sewer mains, municipal roadway construction and resurfacing projects, coastal engineering, recreational improvements, and various special projects.

**Joseph Canada, PLS** - Mr. Canada has over 20 years of diverse Land Surveying experience for a variety of private and municipal projects. He is a graduate of the New Jersey Institute of Technology with a Bachelor of Science degree in Land Surveying. His Surveying experience has enabled him to become an expert in property line resolution, record research and construction services. He also has experience using drone technology in acquiring field data to use for various design and right of way projects.

## SUMMARY OF KEY STAFF

**George Papamakariou II, PE**—Mr. Papamakariou primarily works on Municipal Engineering and Water/Wastewater Engineering projects. His experience includes construction plan design & specification preparation, AutoCad drafting, engineering cost estimates, engineering inspection, shop drawing reviews, and construction project management. Projects he has been involved include roadway reconstruction & drainage, pump station design, sanitary sewer rehabilitation & design, water main design/relocation, well redevelopment, beach/waterfront improvements, NJDOT/CAFRA Applications, and Land Development.

**Julianne Kalksma, EIT** – Julianne Kalksma serves as a Project Designer, and has acquired experience in municipal engineering, water/wastewater engineering, and the planning board review process. Her responsibilities have included preparing grant/loan applications, drafting, reviewing plot plan and variance plan applications, preparing permit plans, and bid review. Prior to her position at Van Cleef, Julianne was a research assistant for the University of Hawaii monitoring beach erosion, and previously had internship experience in a variety of engineering fields.

**Irene K. Battaglia, PE** – Ms. Battaglia has a diverse background in municipal engineering and local government administration. Having served multiple terms on her town’s Planning Board and Council, including two years as Council President, her experience bridges engineering and municipal management. Her expertise lies in regulatory compliance, land use analysis, and municipal engineering. Her past engineering work at the Wisconsin DOT includes oversight for the state’s experimental pavement research program, and management of pavement warranty specifications for asphalt and concrete pavement performance. She holds a B.S. in Civil Engineering from Lehigh University and an M.S. in Civil Engineering from the University of Wisconsin-Madison.

**Mason Herrman, GISP (Geospatial Manager)** – Mr. Herrman has provided GIS support for 78 municipalities as well as a multitude of private clients throughout New Jersey and Pennsylvania. His expertise in GIS has been a keystone in Van Cleef’s Professional Planning department; providing spatial analysis, mapping, and statistics for every municipality Van Cleef offers planning services to. These projects include, Master Plan Reexamination Reports, Hazard Vulnerability Plans, Area in Need of Redevelopment Plans, Highlands Assessments, etc. Mason and his team also received American Planning Association (NJ) 2020 Outstanding Plan Award for their Circulation Plan – Bike and Pedestrian Safety.

**Timothy B. O’Donnell** - Mr. O’Donnell has 20 years' experience in municipal engineering and has served as an inspector on numerous projects. Mr. O’Donnell is experienced in “no dig” sewer rehabilitation work, pipe excavation installation work for water, sewer and storm sewers, pump station upgrades, and road reconstruction work.

**Francesco lemma** – Mr. lemma serves as a Senior Construction Observer who has seventeen years of experience in outside plant work, where he has designed components for various fiber into the premises sites, PV installations across the northeast, telecommunications projects and transportation assignments. Along with the design work that these projects have involved, Mr lemma has also performed traffic studies, site surveys of existing site conditions soil borings, site inspections, foundation observations, as built site walks and basic operations for water management work Mr lemma has also coordinated with various Counties throughout New Jersey, as well as numerous utility companies regarding application submittals and approvals.

**Stephen McCutcheon** – Mr. McCutcheon has over 40 years of consistent, progressive constructive management and inspection experience within both private and municipal roadway/utility projects as well as excavation and historical restoration/preservation. He is an NJSAT Certified Asphalt Paving Construction Technologist, and a member of the American Concrete Institute, New Jersey Chapter. Mr. McCutcheon has exceptional qualifications in strategic planning with comprehensive knowledge of management, strong organizational attributes, and project execution.

---

**Mark A. Bean, PE, CGP, LEED AP, FIGP**  
Vice President of Water/Wastewater



Mr. Bean has more than 3 decades of diverse facility-intensive planning, design, and construction management experience. He has extensive expertise in wastewater treatment and in the design and construction of wastewater infrastructure. He brings a robust skill set that encompasses many complementary disciplines, including site engineering, environmental compliance, stormwater, water treatment and distribution, and the complete delivery of ground-up facilities. He has a demonstrated track record of successful delivery of technically challenging projects in wastewater infrastructure; project, program, and construction management; water, stormwater, and waste treatment; and site and facility environmental characterization, remediation, and preparation.

**REPRESENTATIVE PROJECTS**

*Wastewater Infrastructure*

**Primary Clarifier #4 Replacement – Joint Meeting of Essex and Union Counties, Union County, NJ:** Replacement in-kind of a large traveling bridge sludge collector for a 75'x280' primary settling tank. Project included an initial evaluation of reciprocating sludge collectors as a competing alternative technology prior to moving forward with in-kind replacement. Additional tank upgrades included baffle wall replacement, concrete repairs, gate and weir replacements, as well as chain-and-flight sludge cross-collector replacements.

**Edgewater WPCF Force Main Design – Bergen County Utilities Authority, Bergen County, NJ:** Design of a new 16,852 linear foot (3.2-mile) conveyance system directing all flow from BCUA's Edgewater WPCF back into their 72" Overpeck Relief Sewer for treatment at their main facility in Little Ferry. The system will convey almost 9.5 MGD as an average daily flow, with peak flows of 28 + MGD, and entails over 2 miles of twin 24" HDPE force mains and a mile of 54" gravity sewer. The project incorporates over 2,600 lf of horizontal directional drilling as well deep, jack-and-bore for installation. This is a complex and highly visible project that is also critical to BCUA in meeting its ACO requirements.

**Wastewater Treatment Plant Evaluation and Capital Plan – Borough of Florham Park, Morris County, NJ:** Preparation of a wastewater treatment plant upgrade evaluation, optimization and capital plan to account for future flow increases in the Borough.

**System-Wide Annual Inspections & Recommendations – Stony Brook Regional Sewerage Authority, Princeton, Mercer County, NJ:** Performed annual inspections the Authority's major facilities, inclusive of the River Road WWTP, Hopewell WWTP, Pennington WWTP, all pumping stations, and all meter chambers. A comprehensive annual report was created and used to track system conditions and needs while also tracking completion of previously-identified items. The report was utilized for both insurance and capital planning purposes by the SBRSA.

**Evaluation of Dewatered Sludge Conveying Alternatives and Belt Filter Press and Building Upgrades – Mt. Laurel Township Municipal Utilities Authority, Mt. Laurel Township, Burlington County, NJ:** Investigated various upgrade options within the sludge dewatering building at the Mount Laurel Township Municipal Utilities Authority (MLTMUA) Hartford Road Water Pollution Control Facility and provided a summary report with budget cost estimates to assist the MLTMUA with capital planning efforts. The evaluation presented practical solutions to capacity issues, operational redundancy, and current operations and maintenance concerns regarding the belt filter presses, polymer system, washwater system, sludge conveyance and distribution systems, cold weather operations, dewatering downtime, and several ancillary systems. Ancillary systems and items assessed in the report included interior lighting, compressed air, coatings, distribution piping, main electrical gear and distribution, and HVAC. Maintenance, ease of operation, compatibility in the existing building footprint, cost (both initial capital and operating), and life-cycle were all considered. The realities of construction logistics, downtime, and temporary off-site hauling and disposal were similarly factored.

---

**LICENSES/CERTIFICATIONS**

Licensed Professional Engineer –  
New Jersey

LEED Accredited (BD+C)

Certified Green Professional

Fellow, Institute of Green  
Professionals

**EDUCATION**

M.S. Civil Engineering, Rutgers  
University, 1992

B.S. Civil Engineering, Rutgers  
University, 1991

**PROFESSIONAL AFFILIATIONS**

Water Environment Federation,  
Member

New Jersey Water Environment  
Association, Member

---



---

**Mark A. Bean, PE, CGP, LEED AP, FIGP**

Vice President of Water/Wastewater

**Interlaken Pump Station Reconstruction – Township of Ocean Sewerage Authority, Borough of Interlaken, Monmouth County, NJ:** Lead construction-phase engineer for the replacement of an aging pump station that was incapable of conveying both current coastal storm-induced flows and anticipated future flows. Purposeful construction sequencing almost completely mitigated the need for and risk associated with bypass pumping. A new precast wetwell and valve chamber were installed adjacent to the existing, operating station. Three (3) new 3,350 gpm (4.8 MGD each) pumps were installed with influent comminution, and a temporary electrical and controls structure was erected to bring the new system online. The existing station building was demolished, existing subgrade structures were filled in, and a new pump station building was erected on top of the existing foundation. A new generator and odor-control chemical feed system were installed and all new electrical distribution, VFD's, SCADA, and miscellaneous controls were migrated into the new facility with no disruption to service.

**ELSA WWTP Upgrade, Ewing Lawrence Sewerage Authority – Lawrence Township, Mercer County, NJ:** Conducted the facility assessment that led to the design and construction of the Ewing-Lawrence Sewerage Authority's \$24+ million wastewater treatment plant upgrade project, which included new preliminary treatment facilities, a new UV disinfection system, new effluent pumping system, new chemical storage and distribution systems, and replacement of numerous mechanical and electrical systems throughout the 16 MGD WWTP. Provided actual design, expert support, and coordinating oversight during the design efforts. Acted as resident project representative on site during construction.

**RVRSR Final Clarifiers Replacement Project – Rockaway Valley Regional Sewerage Authority, Town of Boonton, Morris County, NJ:** Resident project representative and expert design support for the Rockaway Valley Regional Sewerage Authority's \$5.6 million Final Clarifiers Repair Project involving the conversion of 4 existing 100' x 100' square clarifiers to new 100'-dia. state-of-the-art circular clarifiers, as well as the appurtenant replacement of a critical motor control center and major electrical components.

**Monroe Street Pumping Station & Morris Ave. Gravity Sewer – Rockaway Valley Regional Sewerage Authority, Town of Boonton, Morris County, NJ:** Resident project representative for the Rockaway Valley Regional Sewerage Authority's \$4.8 million Monroe Street Pumping Station & Morris Avenue Gravity Sewer Project, which entailed the ground-up construction of a new 3 MGD pumping station, installation of an approximately ½-mile long force main, installation of a new, small grinder pumping station, installation of a new, emergency bypass force main, installation of new gravity sewers, and various related and appurtenant systems.

**Storm Control Treatment Facility, Somerset Raritan Valley Sewerage Authority, Bridgewater Township, Somerset County, NJ:** Design and construction of a 14 MGD auxiliary treatment facility with influent overflow structures to mitigate SSO's/CSO's in SRVSA's system and relieve wet weather stresses from SRVSA's main treatment facility. The new facility included influent screening, clarification, filtration, and ultraviolet disinfection.

**River Road WWTP Headworks Facility, Stony Brook Regional Sewerage Authority – Princeton, Mercer County, NJ:** Lead coordinating engineer for design and for construction phase engineering services for the Stony Brook Regional Sewerage Authority's \$10 million Headworks Facility project. This project consisted of the addition of influent fine screening and replacement of the existing grit removal system for a peak flow of 60 mgd, and implementation of enhanced odor control.

**Boonton Trunk Line Emergency Repairs, Rockaway Valley Regional Sewerage Authority, Town of Boonton, Morris County, NJ:** Performed every aspect of site/forensic investigation, design/engineering, and on-site construction services for the emergency repair of a collapsed 54"-dia. sewerage interceptor, which entailed installation of a roughly 4 MGD bypass pumping system, deep excavation to expose to effect repairs, and installation of 750 lf of cured-in-place plastic liner. Successful remedy was affected in only three months, from the discovery of the pipe collapse, to field engineering of all implemented solutions, to completion of repairs and placing the interceptor back in service.



---

**Mark A. Bean, PE, CGP, LEED AP, FIGP**

Vice President of Water/Wastewater

**River Road WWTP Nitrification Aerator & Chem Feed Systems – Stony Brook Regional Sewerage Authority, Princeton, Mercer County, NJ:** Lead engineer and overall coordinating engineer for the design and construction of Stony Brook Regional Sewerage Authority's Nitrification Aerator and Chemical Feed System Replacement Project that entailed replacement of large nitrification aerators/mixers as well as the replacement of multiple chemical storage and feed/distribution systems.

**Jersey City Trunkline Rehabilitation Project, Rockaway Valley Regional Sewerage Authority, Town of Boonton, Morris County, NJ:** Resident project representative for the Rockaway Valley Regional Sewerage Authority's Jersey City Trunkline Rehabilitation Project, which included cleaning, root removal, various internal repairs, 250 lf of CIPP lining, epoxy coating of manhole structures, and laser profiling of over 4,000 lf of a 39" hand-constructed clay tile interceptor dating back to the late 1930's.

**Skillman Village Membrane Bioreactor (MBR) Wastewater Treatment Plant, Montgomery Township, Somerset County, NJ:** Lead designer and overall coordinating engineer for the design and construction management of a 500,000 gpd state-of-the-art Membrane Bioreactor (MBR) facility. Prepared the Alternatives Evaluation Technical Report, Facility Plan, and other similar documentation to navigate the project through the funding process for the New Jersey Environmental Infrastructure.

**Water Pollution Control Plant Improvements – Township of Berkeley Heights, Union County, NJ:** Resident project representative for the successful implementation of the Township of Berkeley Heights \$4.7 million Water Pollution Control Plant Improvements project. This project included: structural and process modifications to existing aeration basins to afford denitrification/anoxic treatment; installation of low-hp hyperbolic mixers; extensive controls and electrical modifications; digester cover replacement and digester process piping modifications; traveling bridge sand filter rehabilitation; and various architectural repairs (brickwork, new roofing, etc.).

**Disc Filter & UV Disinfection System, Logan Township Municipal Utilities Authority, Logan Township, Gloucester County, NJ:** Resident project representative for the successful implementation of the Logan Township MUA's \$1.8 million Disc Filter and UV Disinfection project. This project consisted of the addition of effluent filtration to LTMUA's existing 2 mgd WWTP and replacement of the existing UV disinfection system with a new and more efficient system sized for future flows.

**Southern Water Pollution Control Facility Gravity Belt Thickeners, Ocean County Utilities Authority Stafford Township, Ocean County, NJ:** Conversion of plant process for thickening of waste activated sludge. Fully designed and executed/delivered this on-line process conversion which entailed demolition of two process trains and installation of two new process trains in an existing operating facility. Provided complete process evaluation and design, mechanical, structural, and HVAC design, oversight of electrical/instrumentation design, assembly of the complete bid package, and full construction administrative responsibilities.

**Jackson-Villanova Pump Station Interim Upgrade, Ocean County Utilities Authority, Jackson Township, Ocean County, NJ:** Acted as process and mechanical design engineer and as coordinating project engineer for the interim upgrade of a 6 MGD pumping station. The project entailed replacement of existing centrifugal sewage pumps with new, larger pumps with variable frequency drive systems. The project design also incorporated replacement of facility electrical feeders, extensive electrical modifications, HVAC improvements, detailed dynamic structural analysis, and instrumentation upgrades. Strict attention to construction coordination and sequencing was required as facility operation was to remain uninterrupted throughout the duration of the construction.

**Woodcliff CSO Rehabilitation Study, North Bergen, Hudson County, NJ:** Coordinated the inspection of a critical CSO outfall and authored a comprehensive report submitted to NJDEP delineating a plan for rehabilitation in compliance with ACO guidelines between North Bergen and NJDEP. In addition to this work, another phase of the project entailed statistical analysis and modeling of flow conditions throughout the North Bergen combined sewer system.



---

**Mark A. Bean, PE, CGP, LEED AP, FIGP**

Vice President of Water/Wastewater

**Northern Water Pollution Control Facility Expansion Feasibility Study, Ocean County Utilities Authority Township of Brick, Ocean County, NJ:** Oversight and technical review of engineering consultant efforts for the expansion of the Authority's Northern Water Pollution Control Facility. Provided technical review of mechanical designs as well as process changes and upgrades for expanding the facility from its then current permitted flow of 28 MGD to flows of 32, 36, and 44 MGD, including advanced wastewater treatment.

**Cromakill Creek/Lower Hackensack River Stream Model Study, North Bergen, Hudson County, NJ:** Coordinated sampling criteria and laboratory analyses for a stream model study of North Bergen's Central STP primary receiving waters and participated in a three-phase series of 24-hour sampling events. Performed preliminary water quality predictions precedent to use in the MIT Dynamic Network Model (DNM) and authored a study report required for compliance with ACO guidelines between North Bergen and NJDEP.

**Other Typical Projects**

- Annual inspections and facility assessments
- Odor control assessments and system design
- Large screening equipment and headworks replacements
- Comminution and grinding equipment replacements
- Conveying equipment replacements
- New and replacement sodium hypochlorite, Bioxide, and other chemical feed systems
- Large valve replacements
- Large motor replacements
- Complete pumping station rehabilitation and upgrades
- Wetwell and concrete rehabilitation
- New pipelines and pipeline replacements
- Pipeline lining and other forms of rehabilitation
- New and replacement process piping systems
- New and replacement gas piping systems
- Digester repairs
- New pumping stations of varying sizes

*Representative Aligned Projects (Water, Stormwater, & Waste Treatment)*

**On-Site Advanced Wastewater Treatment Facilities – Multiple Warehouse Development Sites, Monmouth & Burlington Counties, NJ:** Performed design, full permitting (NJPDDES DGW and TWA), and construction assistance for the implementation of on-site advanced wastewater treatment facilities ranging in size from 11,000 to 20,000 gpd for private development clients. Submerged, attached-growth bioreactors (biologically active filters) were utilized for general treatment as well as biological nitrogen removal to meet stringent discharge-to-groundwater requirements. Fully coordinated hydrogeological investigations and studies to effect proper design of both gravity disposal fields as well as pressurized drip irrigation dispersal fields.

**MainStreet NB – Township of North Brunswick, Middlesex County, NJ:** In addition to inspecting, certifying, and permitting an existing wastewater pumping, designed and fully computer-modeled the water distribution system for one of the largest site adaptive re-use projects in the State comprising a transit-oriented multiple use development that includes a train station, multiple big-box retail stores, hundreds of thousands of square feet of commercial space, and over 1,800 residential units. Worked with NJDEP and attained a first-ever, bifurcated approval for the water system that accounts for the long-term timing of this project.

**Town of Maple Shade Water Distribution System Modeling, Town of Maple Shade, Burlington County, NJ:** Performed a detailed analysis and computer model of flow conditions and pressures within the water distribution system for the Town of Maple Shade, NJ. This project entailed complete mapping of the system via both physical inspection and the use of ground-penetrating radar, and also entailed extensive fire flow testing.



---

**Mark A. Bean, PE, CGP, LEED AP, FIGP**

Vice President of Water/Wastewater

**MainStreet NB – Township of North Brunswick, Middlesex County, NJ:** In addition to inspecting, certifying, and permitting an existing wastewater pumping, designed and fully computer-modeled the water distribution system for one of the largest site adaptive re-use projects in the State comprising a transit-oriented multiple use development that includes a train station, multiple big-box retail stores, hundreds of thousands of square feet of commercial space, and over 1,800 residential units. Worked with NJDEP and attained a first-ever, bifurcated approval for the water system that accounts for the long-term timing of this project.

**Town of Maple Shade Water Distribution System Modeling, Town of Maple Shade, Burlington County, NJ:** Performed a detailed analysis and computer model of flow conditions and pressures within the water distribution system for the Town of Maple Shade, NJ. This project entailed complete mapping of the system via both physical inspection and the use of ground-penetrating radar, and also entailed extensive fire flow testing.

**Dead Tree Run Regional Stormwater Detention Basin, County of Somerset, NJ:** Performed all aspects of computer modeling and design of a regional stormwater detention basin. Project entailed survey setup and topo reductions, detailed hydrologic and hydraulic modeling, use of HEC-1, HEC-2, and third-party analysis software, and also included roadway improvements at the location of an existing culvert to effectuate construction of the basin. Authored and provided technical support for a Dam Permit submitted to NJDEP.

**Browning Ferris Industries Morris County Facilities, Morris County, NJ:** Designed a three-stage stormwater detention and treatment systems providing for collection of all site stormwater, treatment of a portion of the site runoff via coalescing media oil/water separators and extended aerated detention of all stormwater in a permanent wet pond environment. Required extensive computer modeling.

**Pilot Wastewater UV/Peroxidation Plant, Sandoz Pharmaceutical Corporation, Township of East Hanover, Morris County, NJ:** Assisted in the design, staffing, start-up and prove-out of a pilot facility for the treatment of variable waste streams from the client's manufacturing and research facilities on site.

**Groundwater Treatment Facility, U.S. Army Corps of Engineers, Picatinny Arsenal, Town of Dover, Morris County, NJ:** Assisted in the staffing and start-up of a groundwater treatment facility for the removal of VOC's from groundwater. The facility provided chemical addition, flocculation/clarification, multimedia filtration, packed-tower air stripping, and GAC adsorption.



***Technical Highlight – Building Systems***

Mr. Bean also brings expertise in building and mechanical systems to his clients. Drawing from his extensive experience, inclusive of both large scale and niche development as well as in the design and administration of high-profile capital projects at one of the largest public university institutions in the country, Mr. Bean works to ensure that his clients' building systems always represent the optimal balance of function, efficacy, efficiency, sustainability, and life-cycle cost. A sampling of projects within the water/wastewater sector where his expertise has been brought to bear include:

- **Sussex County Municipal Utilities Authority – Paulinskill Wastewater Treatment Plant:**  
New Operations and Control Building - full HVAC and plumbing design (inclusive of potable well water supply)
- **Stony Brook Regional Sewerage Authority – River Road Wastewater Treatment Plant:**
  - New headworks facility – full HVAC design
  - New chemical feed facilities in existing Operations Building – fire protection systems extension and modifications
  - Main generator replacement in existing Generator Building – full HVAC design of supplemental ventilation systems
  - Plant laboratory in existing Operations Building – HVAC analysis and technical recommendations for system replacement
- **Stony Brook Regional Sewerage Authority – Pumping Stations:**
  - South Brunswick Pumping Station generator replacement – full HVAC design of supplemental ventilation systems
  - Millstone Pumping Station generator replacement – full HVAC design of supplemental ventilation systems
- **Frenchtown Borough – Wastewater Treatment Plant & DPW Garage Complex:**  
New WWTP Operations Building and new DPW garage and offices – full plumbing design (inclusive of potable well water supply)
- **Hamilton Township Department of Water Pollution Control – Wastewater Treatment Plant:**  
Control Building B-4 – HVAC analysis and technical recommendations for system replacement

**Sampling of utilities and municipalities serviced:** Joint Meeting of Essex and Union Counties, Bergen County Utilities Authority, Stony Brook Regional Sewerage Authority, Rockaway Valley Regional Sewerage Authority, Ewing Lawrence Sewerage Authority, Philadelphia Water Department, Township of Middletown Sewerage Authority, Long Branch Sewerage Authority, Township of Ocean Sewerage Authority, Borough of Florham Park, Montgomery Township, Ocean County Utilities Authority, Passaic Valley Sewerage Commissioners, Berkeley Heights Township, Hamilton Township, Logan Township Municipal Utilities Authority, Town of North Bergen, Town of West New York (NJ), Camden County Municipal Utilities Authority, Monroe Township Municipal Utilities Authority, Western Monmouth Utilities Authority, Somerset-Raritan Valley Sewerage Authority, Manasquan Regional Sewerage Authority, Middlesex Water Company, & Jackson Township Municipal Utilities Authority.



---

**John Berens, P.E.**  
Senior Professional Engineer



Mr. Berens has more than 49 years of experience in the engineering profession, specializing in the water and wastewater field. Mr. Berens has extensive experience in all project phases from system evaluation and studies through design and construction for projects, including inflow/infiltration (I/I) and Sewer System Evaluation Survey (SSES) studies and reports; water system analyses; water supply, treatment, storage and distribution system design and rehabilitation; wastewater collection, treatment and pump station design and rehabilitation and various related projects.

**WASTEWATER PROJECTS EXPERIENCE**

Some of the projects Mr. Berens has been involved with relating to wastewater facility engineering include:

**OCEAN COUNTY UTILITIES AUTHORITY – JACKSON TOWNSHIP METERING STATION IMPROVEMENTS** - Project manager responsible for preparation of construction plans and specifications for a 2,000-gpm pump station and metering chamber. OCUA determined metering inaccuracies were occurring during low flow periods as the differential meters were too large to accurately record Jackson's flow. The design required to correct the problem consists of diverting flow from a 36-inch drainage interceptor by way of a division chamber into a variable frequency pump station. The pump station conveys sewage through the meter chamber and returns it back into OCUA's interceptor. OCUA metering problems are corrected utilizing the smaller pump station flow meter.

**LONG BRANCH SEWERAGE AUTHORITY** – Project Engineer/Manager responsible for performance of the USEPA I/I and SSES studies on the City's sewage collection system; site plan reviews; design of 75,000-foot sewer rehabilitation project, including pump station; installation of VFD's on existing raw sewage pumps and aeration tank blower motors which are operated off D.O. probes; final settling tank sludge collection system replacement; inspection services for the treatment plant's thickener overflow piping, sludge collection system replacement and grit removal facility, and preparation of the Authority's Capacity Assurance Study and Redevelopment Plan for NJDEP.

**JACKSON TOWNSHIP MUA – SEWER SYSTEM EVALUATIONS** – Project Manager responsible for the study, evaluation and rehabilitation of over 390,000 linear feet of the Authority's sewage collection system in the performance of seven (7) projects (Phase I thru 6B). Work consists of preparation of plans and specifications to contract bid cleaning, closed circuit TV inspection and repair work, provide contract administration services, evaluation of collected data with respect to needed repairs, coordinate repair work and preparation of detailed report and presentation to JTMUA.

**JACKSON TOWNSHIP MUA - HAMPSHIRE HILLS PUMP STATION RENOVATION** – Project Manager responsible for the conversion of a troublesome wetwell mounted pump station to a 425 gpm submersible sewage pumping facility. Project included master planning sewer service area, pump design utilizing existing facilities and piping and preparation of construction plans, specifications and perform Contract Administration services. Work includes existing pump station demolition work, installation of bypass manhole, maintenance of sewage flows, relocation of existing control panels, lighting and telephone facilities, installation of duplex pump complete with rails, piping, valves, access hatch and appurtenances and installation of retaining wall.

**BOROUGH OF SEASIDE HEIGHTS – HOT WATER CURED IN PLACE SEWER MAIN LINING** – Project Manager responsible for preparation of construction drawings, specifications and construction management services for four (4) cured in place liner projects totalling approximately 45,500 linear feet of 8-inch, 10-inch, 12-inch and 15-inch diameter sewer mains.

---

**LICENSES/CERTIFICATIONS**

Licensed Professional Engineer  
NJ #24GE03195300

**EDUCATION**

B.S. Civil Engineering, West  
Virginia University

**PROFESSIONAL ASSOCIATIONS**

Water Environment Federation

American Water Works  
Association

---



**BOROUGH OF SEASIDE HEIGHTS – SANITARY MANHOLE REHABILITATION** – Project Manager responsible for preparation of construction drawings, specifications and construction management services for two (2) manhole reconstruction projects consisting of approximately 180 manholes.

**U.S. WATER, LLC** – Provide technical assistance for evaluation and upgrade of existing sewage treatment plant and pump station for U.S. WATER to utilize in bidding for Operation and Privatization contracts. Work included evaluation of existing facilities, with respect to reducing O&M expenditures by identifying problems/costly areas of operation and present cost efficient solutions. Projects included West New York Wastewater Treatment Plant and Sewerage System, New Brunswick Sewerage System, Phillipsburg Wastewater Treatment Plant, Bridgeport Wastewater Treatment Plant in Connecticut, Easton Wastewater Treatment Plant in Pennsylvania, Bernards Township Regional Pumping Facilities and Glassboro/Peapack Sewage System.

**TOWNSHIP OF MIDDLETOWN SEWERAGE AUTHORITY** – Project Engineer on the treatment plant expansion project. Responsibilities included the design of the raw sewage pump station, gravity thickener, grit removal systems, raw sludge pump station, return sludge pump station, final settling tanks chlorination facilities and process water system.

**WARREN COUNTY – SEWAGE TREATMENT PLANT UPGRADE** – Project Manager responsible for the design and construction of a sanitary sewerage system to service the new Warren County Community College. The project consisted of construction of pump stations, collection systems and an upgrade of an existing sewage treatment plant and pump station. Treatment plant upgrades included flow equalization, aeration systems, sludge handling, chlorination, dechlorination and upgrading electrical and HVAC systems in confined areas to meet appropriate CLASS I, DIV. I, GROUP D requirements.

**CHERRY CREEK PUMP STATION – OLD BRIDGE MUA** – Project Manager responsible for the design and construction of a 1 million gallon per day variable speed sanitary sewage pump station that conveys its sewage into a common forcemain shared by 2 other pump stations. Design also included a regional analysis of hydrogen sulfide problems and provisions to eliminate the problem cost effectively.

**TOWNSHIP OF HOLMDEL** – Project Manager responsible for design of the Hills of Holmdel and Estates of Holmdel sanitary sewers. The design consisted of a pump station, generator facility and 22,000-lineal feet of sewers on steep slopes and in environmental sensitive areas.

**YARDLEY MANOR PUMP STATION – OLD BRIDGE MUA** – Project Manager responsible for design of a 1/2 million per day regional sanitary sewage pump station and forcemain design that conveys sewage into a common forcemain shared by two (2) other pump stations, including hydrogen sulfide analysis to avoid potential safety hazards and facility damage. Sewage Collection System studies and reports, as well as design and rehabilitation of sewer systems, treatment, pump station and forcemain facilities have also been provided by Mr. Berens to the Township of Clark (sewer and manhole repair and linings), Borough of Red Bank, Borough of Sea Bright, Borough of Caldwell, Township of Edison, Township of Woodbridge, Township of Alamuchy, Township of Wall, Borough of Jamesburg and numerous other public and private clients.



**POTABLE WATER PROJECTS**

Mr. Berens has been in responsible charge as Senior Project Engineer and/or Project Manager on hundreds of water system facility projects, for private and public clients. Projects, from analysis through planning hydraulic computer simulation, design and construction administration and observation, have included supply wells, treatment plants, storage tanks and transmission and distribution piping. A sampling of representative projects includes the following:

**JACKSON TOWNSHIP MUA – NJDEP GROUND WATER RULE COMPLIANCE** – Project Manager responsible for evaluation and upgrade of the Authority’s numerous water supply and treatment facilities to receive 4-Log, Virus Inactivation Certifications. Work consisted of evaluation of water supply/treatment flow rates, temperature, PH, chlorine injection points and detention times to meet chlorine contact time in accordance with NJDEP Ground Water Rule Compliance requirements. Work also included facility and monitoring upgrades necessary to meet the requirements.

**OLD BRIDGE MUNICIPAL UTILITIES AUTHORITY SYSTEM – MISCELLANEOUS WATER PROJECTS** – Including analysis of the water system with computer simulations and design and contract administration for water distribution system improvements. Analysis consisted of evaluation of supply, distribution, storage and the affect proposed improvements have on the water system.

**BOROUGH OF UNION BEACH – MISCELLANEOUS WATER PROJECTS** – Project engineer involved in the demolition of the Borough’s 1927, 151 ft tall 200,000 gallon elevated water storage tank. Tasks include design and construction administration services. Including preparation of hydraulic computer model of the water systems, design, contract administration and observation for construction and/or rehabilitation of the water treatment plant, well, storage tank and mains. Other projects include evaluation of electrical and control systems at the Borough’s Water and Sewerage Facilities.

**BOROUGH OF ISLAND HEIGHTS - WELL CONSTRUCTION** – Responsible for design, permitting and construction of Potable Water Supply Well No. 10 under NJDEP Emergency Provisions. Also responsible for design, preparation of contract documents, permitting and financial applications for Potable Water Supply Well No. 9.

**LAKESWOOD TOWNSHIP MUA** – Project Manager for the design and construction of eleven (11) water meter vaults generally on live 12-inch ACP water mains. The project includes isolating flow immediately adjacent to meter vaults, installation of bi-directional flow meters, water sampling stations, and automatic meter reading (AMR) throughout an age restricted community.

Design services for water system supply, treatment, storage, transmission and distribution system facilities has also been provided to the Borough of Highlands, Borough of Atlantic Highlands, Howell Township, Borough of Red Bank, Borough of Union Beach, Borough of Englishtown, Borough of Seaside Heights, Borough of Ocean Gate, and numerous other public and private clients.

---

**Nicholas M. Brown, PE, CME**  
Professional Engineer



Mr. Brown has provided engineering services for a wide variety of water, wastewater, and municipal engineering projects including design and preparation of plans, specifications, cost estimates, hydraulic modelling, and permitting. He has provided geotechnical services, construction observation, and construction phase engineering services for numerous wastewater treatment plants, wastewater pump stations, process equipment, sanitary force mains, sanitary gravity sewers, pipe assessments, CCTV inspections and CIPP re-lining projects.

His construction duties have included oversight for several wastewater projects involving deep excavation and bracing, heavy concrete structures, and piping installation. Additional responsibilities related to construction management include coordination with the project owner, contractors, support engineers, and regulatory agencies, as well as preparation of site layouts, quantity take-offs, scheduling construction, construction inspection and coordinating “as-builts” and field documentation.

**PROJECT EXPERIENCE**

**Marina Area Pump Station – Bypass Connection & Meter Evaluation, The Atlantic City Sewerage Co., Atlantic City, NJ:** Project Manager responsible for performing a comprehensive evaluation for a bypass connection and flow meter at the Marina Area Pump Station (MAPS). Specific tasks conducted for this project included review of existing system head curves, pump curves, and site layout to determine locations for bypass connection and flow meter.

**Wastewater Treatment Plant Facility Assessment, Township of Ocean Sewerage Authority, Oakhurst, NJ:** Project Manager responsible for the comprehensive assessment of their existing 7.5 MGD Purox activated sludge wastewater treatment plant (WWTP). Specific tasks conducted for this project included field reconnaissance to catalog existing facility assets, preparation of condition assessment report and culmination of Capital Improvement Plan (CIP) projects over the next 10 years. Presented report findings and CIPs to Authority’s engineering committee commissioners.

**Lake Drive Water Main Extension, Borough of Island Heights, Ocean County, NJ:** Project manager and lead designer for the replacement of approximately 1,200 LF of water main. Specific tasks conducted for this project included preparation of contract specifications, drawings, cost estimate, coordination with Borough and manufacturers. Bidding duties included attendance of Prebid meeting, review of bid documents, issuance of Notice of Award & Notice to Proceed and preparation and attendance of preconstruction meeting. Construction management duties will include coordination of site contractor/subcontractor activities, construction phase and start-up engineering services, as-builts, and field documentation. Maintain close coordination with the Borough, general contractor, subcontractors, support engineers, and regulatory agencies.

**2024 Annual TV & Cleaning of Authority Interceptor System – Phase 4, Bayshore Regional Sewerage Authority, Monmouth County, NJ:** Project Manager for the system wide CCTV And cleaning project totaling approximately 13,200 LF of 48-inch and 54-inch diameter RCP Interceptor spanning from Union Beach, Hazlet and Keyport. Duties include direct coordination with onsite inspector, client and contractor. Project also includes the preparation of a comprehensive report evaluating and assessing the findings of the project.

**Glenside Drive Water Main Replacement, Township of Mount Olive, Morris County, NJ:** Project manager and lead designer for the replacement of approximately 2,000 LF of water main and Glenside and Kennedy Drive. Specific tasks conducted for this project included preparation of contract specifications, drawings, cost estimate, coordination with Township and manufacturers.

**Replacement of Potable Water Meters, Borough of Island Heights, Ocean County NJ:** Project manager and lead designer for the replacement of approximately 918 residential water meters with ultra-sonic style meters. Specific tasks conducted for this project included preparation of contract specifications, drawings, cost estimate, coordination with Borough and manufacturers. Project was funded through NJDEP I-Bank so additional duties included application preparation, coordination with NJDEP, preparation of interim reports and submittal documents and closeout of loan. Bidding duties included attendance of Prebid meeting, review of bid documents, issuance of Notice of Award & Notice to Proceed and preparation and attendance of preconstruction meeting.

---

**LICENSES/CERTIFICATIONS**

Licensed Professional Engineer  
NJ #24GE05410400

Certified Municipal Engineer  
NJ #19-06

**EDUCATION**

Bachelor of Science, 2012,  
Mechanical Engineering,  
Rutgers University

**PROFESSIONAL AFFILIATIONS**

NJWEA

---



**Removal and Replacement of Potable Water Meters, Borough of Ocean Gate, Ocean County NJ:** Project manager and lead designer for the replacement of approximately 1,152 residential water meters with positive displacement style meters. Specific tasks conducted for this project included preparation of contract specifications, drawings, cost estimate, coordination with Borough and manufacturers. Project was funded through NJDEP I-Bank so additional duties included application preparation, coordination with NJDEP, preparation of interim reports and submittal documents and closeout of loan. Bidding duties included attendance of Prebid meeting, review of bid documents, issuance of Notice of Award & Notice to Proceed and preparation and attendance of preconstruction meeting.

**Glenbourne Drive Sewer Pump Station Rehabilitation, Township of Boonton, Morris County, NJ:** Project Manager and Lead Designer responsible for the preparation of specifications and design drawings for the upgrade of existing raw sewage pumps, rehabilitation of exiting wet wells, installation of above grade valve vault, and site improvements. Additional responsibilities include coordination with Township and internal design team, additional design support, review of cost estimating, and review of bid packages and shop drawing submittals.

**Water Storage Tank Site Evaluation Study, Borough of Seaside Heights, Ocean County, NJ:** Project Manager responsible for performing a comprehensive evaluation for the replacement of the Borough's existing water storage tank. Specific tasks conducted for this project included review of site conditions to locate new tank, evaluation of multiple tank designs for Borough selection, cost comparison of each. Additional duties included preparation of calculations required for sizing water storage tank to handle the Borough's ongoing development throughout town.

**Sandy Plant Wide Restoration and Mitigation, Bergen County Municipal Utilities Authority, Little Ferry, NJ:** Project Engineer responsible for the preparation of specifications and design drawings for the process upgrades to the Little Ferry treatment plant's four (4) secondary sludge pumping stations. Upgrades include replacement of existing waste activate sludge (WAS) pumps, return activated sludge (RAS) pumps, spray water pumps, sump pumps, effluent pumps and elutriant pumps be replaced with submersible style pumps to protect against possible flooding while providing easier operation and maintenance. Additionally, various process piping valves and appurtenances were also identified to be rehabilitated, replaced with a flood proof piece of equipment or to be elevated above the base flood elevation (BFE). Lastly, work at these four stations will include moving all identified electrical systems to an elevated steel platform above the flood elevation just outside of each of the station's entrance buildings. Additional responsibilities include design support, AutoCAD drafting and Revit Modelling, cost estimating, milestone design reporting (30%, 60%, 90%). Project is currently under permitting review and construction is anticipated for 2025.

**Pump Station Improvements Phase 2, Middle Township, Cape May County, NJ:** Project Manager and Lead Designer responsible for the preparation of specifications and design drawings for the upgrade of existing raw sewage pumps, rehabilitation of exiting wet wells, installation of valve chambers, and site improvements. Additional responsibilities include coordination with Township and internal design team, pump station modelling using WaterGEMS, additional design support, review of cost estimating, and review of bid packages and shop drawing submittals. Construction management duties will include coordination of site contractor/subcontractor activities, construction phase and start-up engineering services, as-builts, and field documentation. Maintain close coordination with the Township, general contractor, subcontractors, support engineers, and regulatory agencies.

**Pump Station Improvements Phase 1, Middle Township, Cape May County, NJ:** Project Manager and Lead Designer responsible for the preparation of specifications and design drawings for the upgrade of existing raw sewage pumps, rehabilitation of exiting wet wells, installation of valve chambers, and site improvements. Additional responsibilities include coordination with Township and internal design team, pump station modelling using WaterGEMS, additional design support, review of cost estimating, and review of bid packages and shop drawing submittals. Construction management duties included coordination of site contractor/subcontractor activities, construction phase and start-up engineering services, as-builts, and field documentation. Maintained close coordination with the Township, general contractor, subcontractors, support engineers, and regulatory agencies.



**Upper Manasquan Pump Station Wet Well Coarse Bubble Diffuser Installation, Manasquan River Regional Sewerage Authority, Farmingdale, NJ:** Project Engineer and Lead Designer responsible for the preparation of specifications and design drawings for the installation of a coarse bubble diffuser system within each wet well. Additional responsibilities included design support, review of cost estimating, and review of bid packages and shop drawing submittals. Construction management duties included coordination of site contractor/subcontractor activities, construction phase and start-up engineering services, as-builts, and field documentation. Maintained close coordination with the Authority, plant personnel, general contractor, subcontractors, support engineers, and regulatory agencies.

**Various Pump Station Conversions, Landis Sewerage Authority, Vineland, NJ:** Project Manager and Lead Designer responsible for the preparation of specifications and design drawings for the upgrade of existing raw sewage pumps, conversion of existing stations to submersible stations, installation of comminutors, rehabilitation of existing wet wells, installation of valve chambers, and site improvements. Additional responsibilities include design support, AutoCAD drafting, cost estimating, and review of bid packages and shop drawing submittals. Construction management duties included coordination of site contractor/subcontractor activities, construction phase and start-up engineering services, as-builts, and field documentation. Maintained close coordination with the Authority, plant personnel, general contractor, subcontractors, support engineers, and regulatory agencies.

**Sears Pump Station and Force Main Replacements, Landis Sewerage Authority, Vineland, NJ:** Prepared specifications and design drawings for the demolition of the existing pump station building and select equipment, removal of the existing concrete top slab, installation of a new precast concrete top slab, bypass pumping of wastewater flows, replacement of existing raw sewage pumps, installation of new bypass pump, site improvements, installation of new electrical equipment, construction of a 12-inch diameter sanitary force main, jack and bore crossing beneath Landis Avenue, installation of new air release and dog house manhole, construction of a 24-inch diameter gravity sewer, installation of new manholes, associated traffic control measures, and all required temporary and permanent restoration. Additional responsibilities included design support, AutoCAD drafting, cost estimating, and review of bid packages and shop drawing submittals. Construction management duties will include coordination of site contractor/subcontractor activities, construction phase and start-up engineering services, as-builts, and field documentation. Maintain close coordination with the Authority, plant personnel, general contractor, subcontractors, support engineers, and regulatory agencies.

**Ramada Pump Station and Force Main Replacements, Landis Sewerage Authority, Vineland, NJ:** Project Manager and Lead Designer responsible for the preparation of specifications and design drawings for the replacement of existing raw sewage pump bypass pumping of wastewater flows, replacement of the valve chamber, replacement of process piping and appurtenances, site improvements, construction of a 4-inch diameter sanitary force main, horizontal direction drill (HDD) crossing beneath West Landis Avenue, construction of a 24-inch diameter gravity sewer, installation of new manholes, associated traffic control measures, and all required temporary and permanent restoration. Additional responsibilities included design support, AutoCAD drafting, cost estimating, and review of bid packages and shop drawing submittal reviews. Construction management duties will include coordination of site contractor/subcontractor activities, construction phase and start-up engineering services, as-builts, and field documentation. Maintain close coordination with the Authority, plant personnel, general contractor, subcontractors, support engineers, and regulatory agencies.

**Upper Manasquan Pump Station Comminutor Upgrades, Manasquan River Regional Sewerage Authority, Farmingdale, NJ:** Prepared specifications and design drawings for the upgrade of existing hydraulic comminutors to electric, which included the installation of one new XP immersible motor and one new comminutor control panel, and relocation of one existing comminutor control panel. Additional responsibilities included design support, AutoCAD drafting, cost estimating, and review of bid packages and shop drawing submittals. Construction management duties included coordination of site contractor/subcontractor activities, construction phase and start-up engineering services, as-builts, and field documentation. Maintained close coordination with the Authority, plant personnel, general contractor, subcontractors, support engineers, and regulatory agencies.



**Wet Well Improvements Phase II, Upper Manasquan Pump Station, Manasquan River Regional Sewerage Authority, Marlboro, NJ:** Assisted with the preparation of specifications and design drawings for the upsizing of the Authority's existing emergency bypass pump from 5 MGD to 9 MGD. Additional improvements include cleaning and lining of the existing wet wells and other minor site improvements. Additional responsibilities included design support, AutoCAD drafting, and shop drawing submittal reviews. Construction management duties included coordination of site contractor/subcontractor activities, construction phase and start-up engineering services, as-builts, and field documentation. Maintained close coordination with the Authority, plant personnel, general contractor, subcontractors, support engineers, and regulatory agencies.

**Crest Haven Pump Station Comminutor Chamber, Cape May County Municipal Utilities Authority, Cape May Court House, NJ:** Assisted with the design and preparation of contract and permit drawings as well as contract specifications for the construction of a 250-sf subgrade wastewater grinder station that will tie into the existing pump station. The design also includes the replacement of approximately 120 LF of sanitary sewer with 12-inch diameter PVC pipe. Construction management duties included coordination of site contractor/subcontractor activities, construction phase and start-up engineering services, as-builts, and field documentation. Maintained close coordination with the Authority, general contractor, subcontractors, support engineers, and regulatory agencies.



---

**Tyler B. Evans, PE**

Project Manager, Water and Wastewater



Mr. Evans is a Professional Environmental Engineer licensed in the Commonwealth of Pennsylvania, the State of New Jersey and the State of Connecticut. Mr. Evans has over eight (8) years of experience in capital planning, design, review, and construction management of public and private water and wastewater projects.

**WORK EXPERIENCE**

|                                    |  |
|------------------------------------|--|
| <b>July 2024 - Present</b>         | <b>Project Manager, Water and Wastewater<br/>Van Cleef Engineering Associates, LLC</b> |
| <b>September 2021 – July 2024</b>  | <b>Assistant Project Manager<br/>Colliers Engineering &amp; Design</b>                 |
| <b>April 2019 – September 2021</b> | <b>Project Engineer<br/>Gilmore &amp; Associates, Inc.</b>                             |
| <b>May 2016 – April 2019</b>       | <b>Assistant Project Engineer<br/>Carroll Engineering Corporation</b>                  |

---

**LICENSES/CERTIFICATIONS**

Licensed Professional Environmental Engineer, Commonwealth of Pennsylvania, New Jersey, and Connecticut

**EDUCATION**

B.S. Environmental Engineering, May 2016  
Wilkes University – Wilkes-Barre, PA

---

**PROJECT EXPERIENCE**

**Croydon Wastewater Treatment Plant Expansion – Bristol Township, Croydon, PA** – This project involved the construction of a new vortex-flow grit chamber, secondary clarifier, chlorine contact tank, sludge/scum pump station, flow splitter box, chlorine injection vault, dichlorination manhole, and chemical feed building. As part of this project, my responsibility was to aid in the design and calculations, prepare the project specifications/manual, draft the project construction drawings on AutoCAD, obtain WQM Part II DEP permitting, prepare a project cost estimate, bid the project on PennBid, and aid in all construction administration.

**Tindey Run Sanitary Pump Station – Upper Providence Township, PA** – This project involved the construction of a new 150 GPM duplex submersible sanitary pump station. As part of this project, my responsibility was to handle all design and hydraulic calculations, prepare the project specifications/manual, draft the project construction drawings on AutoCAD, obtain WQM Part II DEP permitting, prepare a project cost estimate, bid the project on PennBid, and handle all construction administration work like pay requests, shop drawings submittals, change orders, and field design changes.

**Herman Road Elevated Potable Water Tank Rehabilitation – Horsham Water & Sewer Authority, Horsham Township, PA** – This project involved the rehabilitation of an existing elevated water storage tank. Repairs included new interior and exterior coatings, metal repairs to the tank, and valve replacements. As part of the project, my responsibility was to handle all design, prepare the project specifications/manual, draft the project construction drawings on AutoCAD, obtain Public Water Supply DEP permitting, prepare a project cost estimate, bid the project on PennBid, and handle all construction administration work like change orders and pay requests.

**Belvidere Wastewater Treatment Plant Renovation – Warren County (Pequest River) Municipal Utility Authority, Belvidere Township, NJ** – This project involved the rehabilitation of an existing 0.5 MGD wastewater treatment plant constructed in the 1970's. As part of this project, my role was to evaluate the existing design, efficiency, effectiveness, operational costs, and equipment conditions out in the field. I prepared a 10-Year Capital Plan for the Authority to use for the renovation process to meet their budgeting needs. I was also involved in the design of the renovation to the primary and secondary clarifiers, including hydraulic calculations, drafting the construction drawings using AutoCAD, obtaining NJDEP permitting, preparing technical specifications, preparing cost estimates, and construction administration like recommendation of bid award letters, notice to proceed letters, preconstruction meetings, payment application requests, change orders, and shop drawing submittal reviews.



**Watchung Pump Station Renovation & Force Main Replacement – City of Plainfield, NJ** – This project involved the renovation of an existing 1300 GPM triplex submersible pump station and replacement of the existing 1940's 8-inch C.I. force main. As part of this project, my role was to handle all of the design and hydraulic calculations, as well as the preparation of construction plans, technical specifications, NJDEP TWA permitting, conservation district E&S permitting, and cost estimates. This project involved the design of HDD under several existing bridges.

**I&I Analysis & CIPP Lining Project – Horsham Water & Sewer Authority, Horsham Township, PA** – This project involved completing an I&I analysis of the existing HWSA sanitary sewer system and the coordination of a 15,000+ LF CIPP lining project. As part of this project, my role was to conduct the I&I analysis to determine where CIPP lining needs to occur. This I&I analysis process involved coordinating TVing the existing sanitary sewer system and evaluating the reports to determine a ranking of needs. This I&I analysis also involved coordinating flow metering studies in strategic locations throughout the existing sanitary sewer system. Additionally, my role was to prepare project plans, technical specifications, and perform construction administration for a 15,000+ LF CIPP lining project of the existing sanitary sewer system.

**W. Main Street Sanitary Force Main Replacement Project – Pen Argyl Borough, PA** – This project involved the replacement of the existing 1960's 8-inch C.I. force main within a PennDOT state road. As part of this project, my role was to complete all drafting of construction plans using AutoCAD, perform all hydraulic calculations, obtain all necessary permitting from PADEP and PennDOT including WQM Permits and HOP Permits, preparation of all technical specifications and other bidding addendum documents, completion of project cost estimates, putting the project out to bid on PennBid, and handling all construction administration including recommendation of bid award, notice to proceed, preconstruction meeting, shop drawing submittal reviews, change orders, payment requests, punchlists, as-builts, and permit closeouts.

**Willowbrook Road Water Main Relocation Project – City of Bethlehem Water and Sewer Resources, Allen Township, PA** – This project involved the relocation of an existing 30-inch I.D. (36-inch O.D.) RCCP water main located under Northampton County Bridge No. 124 within Willowbrook Road crossing the Catasauqua Creek in coordination with a bridge replacement project. As part of this project, my role was to complete all drafting of construction plans using AutoCAD, perform all hydraulic calculations, obtain all necessary permitting from PADEP and NCCD including GP-5 Stream Crossing and E&S Approval, preparation of all technical specifications and other bidding documents, completion of project cost estimates, and handling all construction administration including recommendation of bid award, notice to proceed, preconstruction meeting, shop drawing submittal reviews, change orders, payment requests, punchlists, and permit closeouts.



---

**Robert J. Chankalian, PE, CME**  
Branch Manager



Mr. Chankalian has over 30 years of diverse expertise in both private sector civil/site projects as well as municipal engineering. Before joining Van Cleef, he served as the in-house Director of Community Development, Township Engineer, Floodplain Coordinator, and Stormwater Manager for Toms River Township for 16 years. Mr. Chankalian has experience in all aspects of road construction from mill and overlay, to roadway elevation projects for flood mitigation. Mr. Chankalian oversaw several years of projects in Toms River related to Superstorm Sandy including oceanic beach, dune, boardwalk and walkover construction for over 2.5 miles of oceanfront. This involved constant coordination with FEMA disaster personal, the United States Army Corps of Engineers and NJDEP, where he has become well established in that community.

Mr. Chankalian has been involved in a multitude of municipal projects including: construction of various parks, animal shelter construction, municipal court expansion, police dispatch center and digital trunked radio communications, municipal ice rinks, municipal golf course irrigation, standby generators, boardwalk design, boat ramp design, stream cleaning, bulkheading, parking deck rehabilitation, solar fields, kayak launches, sports field and roadway lighting. He also has experience in capital budget and grant preparation for municipalities. For his efforts in the rebuilding of Toms River Township after Super Storm Sandy, Mr. Chankalian was awarded 2013 Municipal Engineer of the Year by the New Jersey Society of Municipal Engineers.

**PROJECT EXPERIENCE**

**Toms River Township Road Elevation Projects**

**Client:** Toms River Township

**Location:** Township of Toms River, Ocean County, NJ

Township Engineer/Project Manager overseeing all aspects of the Toms River's Road Elevation Program from its inception in 2015 to 2023. This program was initiated by Mr. Chankalian as a pilot program and following that success was a significant portion of Toms River Township's capital budget from that point on. These projects routinely involved several streets each year affecting anywhere from 30 to 80 individual properties. Mr. Chankalian oversaw the initial design phase, resident coordination, acquisition of private right of entry letter agreements, and construction management. In 2022, Mr. Chankalian oversaw a joint project in Brick Township which has resulted in an expansion of this program into Brick Township for 2023.

**Toms River Township Road Overlay Program**

**Client:** Toms River Township

**Location:** Township of Toms River, Ocean County, NJ

**Township Engineer/Project Manager** overseeing all aspects of Toms River's yearly road overlay program with a yearly budget ranging from \$3 to \$5 million. Mr. Chankalian implemented the use of GIS to maintain a system for not only rating roads but tracking their construction history for future use. The system utilized in house inspectors to actively rate over 450 miles of municipal roadway on an ongoing basis to provide the Township a real time assessment of its road network for not only budgeting purposes, but a clear concise way to inform residents of the operation.

**Toms River Township Bulkhead Replacement Program**

**Client:** Toms River Township

**Location:** Township of Toms River, Ocean County, NJ

**Township Engineer/Project Manager** overseeing various bulkhead replacement projects throughout Toms River Township including the replacement and upgrading of bulkheads and drainage outfalls in excess of over 75 street ends and right of ways adjoining various waterways. These projects also provided beautification such as landscaping upgrades and benches were feasible for use by the general public at these open spaces. With over 200 locations, Mr. Chankalian also utilized the GIS to rate and track the condition of all of the bulkheads within the Township for budgeting and asset management purposes.

---

**LICENSES/CERTIFICATIONS**

Licensed Professional Engineer  
New Jersey, 2004

Certified Municipal Engineer,  
New Jersey, 2004

**EDUCATION**

Bachelor of Science – Civil  
Engineering Technology &  
Construction Management –  
New Jersey Institute of  
Technology, 1997

**PROFESSIONAL AFFILIATIONS**

Member - American Society of  
Civil Engineers

Member – New Jersey Society of  
Municipal Engineers

New Jersey Society of Municipal  
Engineer Award – Engineer of the  
Year - 2013

---



#### **Digital Trunked Radio System**

**Client: Toms River Township**      **Location: Township of Toms River, Ocean County, NJ**

**Township Engineer/Project Manager** in charge of oversight of a complete overhaul of the 911 radio system including both police, fire, and EMS services. This project included an addition to the existing police station consisting of a state-of-the-art dispatch center, parking lot upgrades and the construction of several monopoles within the Township to create a hub and spoke antenna transmission system with triple redundancy. This project included the coordination of several design professionals including a civil site design engineering firm, architectural firm, and an RF consultant. Mr. Chankalian also oversaw the contract solicitation and construction management of all aspects of this project which totaled approximately \$14 million.

#### **Oceanic Life Guard Buildings**

**Client: Toms River Township**      **Location: Township of Toms River, Ocean County, NJ**

**Township Engineer/Project Manager** in charge of the reconstruction of two lifeguard buildings within the Ortley Beach section of Toms River Township. Duties included oversight of a consulting architect, geotechnical and civil site engineering consultants, bid solicitation construction management and inspection. Both buildings were designed in the aftermath of Superstorm Sandy with resilient foundation systems to address wave action in the velocity zone adjoining the Atlantic Ocean. The lower levels of the structures were constructed of solid concrete walls with a decorative timber form liner to give the appearance of residential construction to integrate into the neighborhood.

#### **Veterans Park**

**Client: Toms River Township**      **Location: Township of Toms River, Ocean County, NJ**

**Township Engineer/Project Manager** in charge of the concept design, consultant oversight, bid solicitation, construction management and inspection of the Veteran's Park Girls Softball facility. This project included the construction of four softball fields, a T-ball field, a concession stand and bathroom building, playground with poured in place safety surfaces, a wet pond that captures stormwater runoff for reutilization by the irrigation system, remote controlled field lighting and associated parking. This project was initially constructed but due to the popularity of the project an additional project was required several years later to increase the parking by approximately 30% to accommodate the unexpected amount of tournaments hosted at the facility.

#### **Huddy Park**

**Client: Toms River Township**      **Location: Township of Toms River, Ocean County, NJ**

**Township Engineer/Project Manager** in charge of the concept design, consultant oversight, bid solicitation, construction management and inspection of Huddy Park. This project not only included the replacement of the entire bulkhead system for both the island and shoreline sections of the site, but a complete rehabilitation of the park while trying to preserve the historic attributes. The park includes several queues to the historic battle fought by Joshua Huddy including mock up wall of the original Fort and several LED up-lit silhouette statues of revolutionary soldiers. The park also includes docking facilities for boats looking to either visit the park or to visit nearby dock and dine restaurants. In anticipation of the facility to be used for the yearly historic boat show and sales boat show, several entrances and sidewalks were upgraded to handle the weight of boat trailers and larger associated vehicles. The bridge and gazebos have been the site for numerous wedding and prom photos due to the picturesque views of the park and river.

#### **Ortley Beach Boardwalk**

**Client: Toms River Township**      **Location: Township of Toms River, Ocean County, NJ**

**Township Engineer/Project Manager** in charge of the design, bid solicitation, construction management and inspection of the reconstruction of entire oceanic boardwalk within Ortley Beach after Superstorm Sandy. This project included an upgrade of the existing design to accommodate the future walkovers of the then to be constructed USACoE dune construction project in such a way that each access point could be utilized in the interim before sand import operations began years later. The design also included the addition of several ADA access points to bring the project into compliance with current regulations. The boardwalk was designed utilizing a renewable Brazilian hardwood which has resulted in little to no maintenance or apparent degradation over the last 12 years.



**Gilford Park Boat Ramp**

**Client: Toms River Township**      **Location: Township of Toms River, Ocean County, NJ**

Township Engineer/Project Manager in charge of the concept design, consultant oversight, bid solicitation, construction management and inspection of a public boat ramp within the Gilford Park section of the Township. The project included a boat ramp with a large k- turn layout for ease of backing up trailers to the facility. The design also includes 50 foot deep parking spaces to accommodate trucks with trailers and an elevated timber access way from the parking area to the ramp which addressed several environmental concerns related to wetlands and flooding. The project not only provides free boat ramp access to the community, but the walkway and dock was also a pedestrian destination for residents of the adjoining neighborhood to visit the waterway.

**Parking Deck Roof and Solar System**

**Client: Toms River Township**      **Location: Township of Toms River, Ocean County, NJ**

Township Engineer/Project Manager in charge of the concept design, consultant oversight, bid solicitation, construction management and inspection of the rehabilitation of the municipal parking deck. The project consisted of the addition of a self-supporting roof system the atop of the existing parking deck to reduce water infiltration into the existing concrete structure and to ultimately support a solar array. The project received the Green Apple award in 2013.

**Ortley Beach Kayak Launch:**

**Client: Toms River Township**      **Location: Township of Toms River, Ocean County, NJ**

Township Engineer/Project Manager in charge of the concept design, consultant oversight, bid solicitation, construction management and inspection of the rehabilitation of a kayak launch facility and the Ortley Beach section of Toms River Township. With very little public open space available, Mr. Chankalian negotiated the use of two shallow water slips within a private marina for the construction of a public kayak launch. The lease area not only included a floating kayak launch system with an ADA accessible ramp, it also included a kayak rack storage system which individual spaces could be used by residents to avoid the transport back and forth of their kayaks. The project was so successful that the following year necessitated an expansion of the lease area to accommodate additional parking and additional racks.

**Municipal Generator System:**

**Client: Toms River Township**      **Location: Township of Toms River, Ocean County, NJ**

**Township Engineer/Project Manager** in charge of the concept design, consultant oversight, bid solicitation, construction management and inspection of standby generators throughout municipal buildings within the Township. Most notable was the generator system at the Police Department which provided double redundancy including a diesel generator and twin natural gas turbocharged generators to provide power to the facility in the event of either a disruption to the natural gas system or a diesel fuel availability problem. This system was designed to initially start utilizing the diesel generator system which would come online in less than 7 seconds, but after 30 minutes, where a long term outage was assumed, the natural gas generators would come online and transfer over to reserve fuel for future emergencies.

**Toms River Animal Shelter:**

**Client: Toms River Township**      **Location: Township of Toms River, Ocean County, NJ**

Township Engineer/Project Manager in charge of the concept design, consultant oversight, bid solicitation, construction management and inspection of a new Township animal shelter modeled after a more modern approach toward not only housing abandoned animals but a sales approach for future adoption. In lieu of a traditional cage type holding system, individual kennels utilizing a glass containment system where installed to provide a more friendly atmosphere for both the animals and people looking to adopt. The facility included a 24 hour HVAC system with 100% makeup air to minimize odor within the facility. The facility was also designed with sloped epoxy floors to provide less maintenance and associated operational costs.



**Various Subdivisions & Site Plans:**

**Client:** Various

**Location:** Various – State of New Jersey

**Project Manager/Project Engineer** involved in the design of numerous residential subdivisions, site plans, and multi use projects throughout the State of New Jersey. Duties typically included preparation of concept plans and feasibility studies, design of stormwater management systems, NJDEP CAFRA, Freshwater Wetland, and Stream Encroachment Permitting, and the presentation at numerous Planning Boards and Zoning Boards of Adjustment.

**Various Drainage Improvement Plans:**

**Client:** Toms River Township & Monroe Township

**Location:** Toms River Township & Monroe Township

**Project Manager/Project Engineer** involved in the design of numerous drainage solutions to address existing and localized flooding issues throughout these two townships. Duties generally included assessment of either under sized existing systems, new drainage patterns related to recent upland development, or addressing previously overlooked groundwater conditions. Mr. Chankalian has overseen multiple projects of this nature involving not only improvements to the drainage infrastructure within public rights of way but also several projects where resident property was also affected, and access required. For these types of projects not only require the design of a drainage solution, but the coordination with residents while their properties are affected during the construction.

**WORK EXPERIENCE**

**January 2024**

**Van Cleef Engineering Associates, LLC**

Branch Manager of Van Cleef's Toms River Office overseeing the daily operations of Municipal, Water/Wastewater, Surveying and Private Civil/Site Division services.

**2020 – 2024**

**Township of Toms River, New Jersey**

Director, Department of Community Development, Township Engineer, Stormwater Management Coordinator and Floodplain Manager for Toms River Township, Ocean County NJ, 8th largest Municipality in New Jersey, population 96,000+. In addition to duties listed below as the Township Engineer, duties also included oversight of the Division of Buildings Services, Division of Planning and Zoning, Division of Code Enforcement and Division of Parks Buildings and Grounds.

**2008 – 2020**

**Township of Toms River, New Jersey**

Engineering Division Head, Township Engineer, Stormwater Management Coordinator and Floodplain Manager for Toms River Township, Ocean County NJ, Duties include review and inspection of all private site work within the Township in addition to design oversight, consultant management and construction administration of a yearly municipal/capital project budget, typically ranging from \$8 to \$12 million dollars. Also responsible for coordination and oversight of FEMA Floodplain Management, and NJDEP Stormwater Management regulations.

**1999 – 2011**

**RC Engineering & Management Associates Inc. – Brick, New Jersey**

Partner in a design firm focusing on private site development and subdivision design. Engineering duties included all aspects of civil engineering site design including, site layout, drainage design & pond routing, NJDEP wetlands and stream encroachment permitting (HEC-RAS), CAFRA permitting, and additional aspects of land development.

**2005 – 2008**

**Maser Consulting – Red Bank, New Jersey**

Associate / Assistant Department Manager for the Private Site Development Division with annual billings of \$16 million dollars. Duties included client solicitation, invoicing, project budgeting & management of design staff. Engineering duties include all aspects of civil engineering site design including, site layout, drainage design & pond routing, NJDEP wetlands and stream encroachment permitting (HEC-RAS), CAFRA permitting, and additional aspects of land development.



**2001 – 2005**

**Feist Engineering – Monroe, New Jersey**

Director of Engineering Design; in charge of all private & municipal capital design projects. Duties included client solicitation, invoicing, project budgeting & management of design staff. Engineering duties include all aspects of civil engineering site design including, site layout, drainage design & pond routing, NJDEP wetlands and stream encroachment permitting (HEC-RAS), CAFRA permitting, and additional aspects of land development. Responsible for all engineering project design (private and municipal) from initial survey phase through project close-out.

**2000 – 2001**

**JVMorgan Engineering & Surveying – Toms River, New Jersey**

Design/Project Engineer primarily involved in residential subdivision & site plan design. Primary duties included site layout, drainage design & pond routing, NJDEP wetlands and stream encroachment permitting and CAFRA permitting.

**1999 – 2000**

**Kilby Management Inc. – Jersey City, New Jersey**

Project Manager in charge of several high-rise building renovation projects in Jersey City exceeding \$5 million dollars. Duties included client solicitation, cost estimating & proposals, project setup, material ordering & tracking, as well as staff scheduling. Duties also included design and implementation of solutions for various structural and building construction defects.

**1998 – 1999**

**Feist Engineering (Formerly RC Engineering) – Monroe, New Jersey**

Design/Project Engineer involved with capital projects in Monroe Township and design of private client projects. Primary duties included CADD design/drafting, surveying, specification writing, estimating, and contract administration. Duties also included planning board reviews and private site plan and sub-division design. Developed and implemented the firms CADD system and standards.

**1991 – 1998**

**RC Engineering & Management Associates Inc. – Brick, New Jersey**



---

**Jeremy J. Edinger, PE, CME**  
Professional Engineer



As a professional Civil Engineer, Mr. Edinger's responsibilities have been focused in the area of municipal engineering, infrastructure, and utility engineering. His experience spans the complete lifecycle of projects, from field reconnaissance to assisting with layout and design, to the preparation of construction plans using computer-aided design software and the preparation of contract specifications and permit applications necessary at local, county and state approvals, to construction administration and construction inspection. He has assisted with the planning and design of water and wastewater treatment plants, rehabilitation of water supply wells, gravity sewer mains, municipal roadway construction and resurfacing projects, coastal engineering, recreational improvements, and various special projects. Mr. Edinger has also provided inspection services for various concrete curb and sidewalk construction, water and sewer main installation/rehabilitation, dune and dune structure maintenance, and production well redevelopment and rehabilitation projects.

**PROJECT EXPERIENCE**

**Long Point Timber Groin, Borough of Island Heights, Ocean County, New Jersey:**

Successfully permitted, designed and constructed a new timber groin in the Toms River to promote sand accumulation along an eroded shoreline. The project required NJDEP and US Army Corps of Engineers permitting that included an archaeological study of the project area. Construction was successfully completed by a reputable marine contractor. (2021 – 2023)

**Boardwalk Improvements Project, Borough of Seaside Heights, Ocean County, New Jersey:**

Designed and constructed structural repairs and decking replacement for 36,000sf of boardwalk. This project also included the structural design and construction of a concrete crossover ramp for use in heavy machinery crossing the boardwalk onto an adjacent pier and the beach. The project was constructed on-budget despite various setbacks due to design alterations caused by material shortages. (2022 – 2023)

**NJDOT Municipal Aid Road Improvements Projects, Various Municipalities, Ocean County, New Jersey:**

Prepared contract drawings and specifications for NJDOT Municipal Aid funded road projects, including design of road resurfacing/reconstruction, concrete sidewalk and curb, drainage improvements, etc. Project management responsibilities from design through bidding and to construction completion. Coordination with NJDOT is always required to comply with all requirements of State Funded projects. (2021 – Present)

**Belmont Drive and Ardmore Avenue Road Improvements Project, Borough of South Toms River, Ocean County, New Jersey:**

Prepared contract drawings and specifications for NJDOT Municipal Aid funded road resurfacing project. Coordination with the NJDOT was required to comply with all requirements of State Funded projects. (2021 – Present)

**Shoreline Stabilization Project, Borough of Seaside Heights, Ocean County, New Jersey:** Assisted with design of living shoreline/joint-planted revetment for eroded shoreline in the Barnegat Bay. Coordinated with environmental consultant to prepare required permit plans and NJDEP/USACE applications. (2021 – 2023)

**Sanitary Sewer Master Plan, City of New Brunswick, Middlesex County, New Jersey:** Managed and coordinated the efforts required to prepare a full evaluation of the City's sanitary sewer system, inclusive of field GIS data acquisition and updating of the City's sewer mapping, flow metering, hydraulic modelling, buildout analysis, desktop review and preparation of the City's first sanitary sewer master plan. Recommendations were developed and included in the master plan document with a 10-year look-ahead capital improvements plan for addressing an aging system in a constantly evolving city. (2019 – 2020)

---

**LICENSES/CERTIFICATIONS**

Licensed Professional Engineer  
NJ #24GE05324200, 2017

Certified Municipal Engineer  
NJ, 2019

New Jersey Society of  
Municipal Engineers, Municipal  
Engineering Construction  
Inspection Program Graduate,  
2010

OSHA Confined Space Entry  
Certified

**EDUCATION**

B.S. Civil Engineering,  
University of Vermont,  
Burlington, Vermont, 2009

**PROFESSIONAL AFFILIATIONS**

New Jersey Society of  
Municipal Engineers, Member

---



**Wastewater Pump Station Improvements, Mack-Cali Holmdel, LLC, Holmdel, Monmouth County, New Jersey:** Designed, prepared drawings and provided construction administration for a private wastewater pump station and valve chamber improvements project. Tasks included making pump selections, design for the rehabilitation of the existing wet well, design of new piping layout and new valve chamber, and design of new wet well bypass. Coordinated sending out RFP packages of contract documents to contractors and ultimately awarded the project to the lowest responsive bidder. Responsible for the shop drawing review process and overall management of the construction phase (2018)

**Rehabilitation of Roosevelt Avenue Pump Station, Borough of Carteret, Middlesex County, New Jersey:** Designed and prepared construction drawings for the rehabilitation of an existing 13.3 MGD sanitary sewer pump station. The Roosevelt Avenue Pump Station pumps all of the wastewater flows from the Borough to downstream Middlesex County Utilities Authority (MCUA) conveyance piping for treatment at the MCUA's main wastewater treatment facility. Pump and controls failures rendered the existing station unable to pump all of the incoming flows which resulted in an expedited emergency design of improvements to the station. (2019)

**W 7th Street Regulator Station Storm Hardening, New Jersey Natural Gas Company, Ship Bottom, Ocean County, New Jersey:** Designed and prepared civil site drawings and coordinated the design and preparation of contract drawings and specifications for structural, mechanical, architectural, and electrical-related components of an elevated natural gas regulator station and protective enclosure building to protect the regulator station from flooding and storm related debris. Coordinated the bidding and contractor award. Responsible for the shop drawing review process and request for information (RFI) responses, as well as management of the overall construction phase of the project. (2016 – 2019)

**Reconstruction of Pacific Avenue, Wildwood Crest Borough, Cape May County, New Jersey:** Designed and prepared contract drawings for the full reconstruction of 0.9 miles of roadway, including a complete sanitary sewer evaluation and re-design for the aging infrastructure located within the project's corridor. Coordinated the implementation of a "road diet" into the final design of the roadway striping layout, which included numerous meetings and discussions with Borough Commissioners, the County Engineer, a traffic engineering consultant, and Borough residents to reconfigure the striping design from a 4-lane road down to a 2-lane road. Coordinated the bidding and contractor award and managed the construction of the project from start to project closeout. (2016 – 2017)

**Municipal Engineering Services, Freehold Township, Monmouth County, New Jersey:** Assisting the Municipal Engineer performing various developer reviews, including major and minor site plan applications, major and minor subdivision applications, resolution compliance reviews, and zoning application reviews for various projects. Work directly with the Township Engineer to ensure all applications meet the requirements of the municipality, per the Township's Ordinances, as well as all State and Federal agencies. (2014 – 2018)

**Herbert Street Pump Station Reconstruction, Mantoloking Borough, Ocean County, New Jersey:** Assisting with the design and construction of a sanitary sewer pump station to replace the existing pump station, which was completely destroyed during Superstorm Sandy. Tasks include assisting with the preparation of construction drawings using AutoCAD, assisting with public bid, performing shop drawing reviews, coordinating with contractor and various utility companies, and performing construction administration duties throughout the entirety of the project. (2014 – 2016)

**Deputy Land Use Official, Mantoloking Borough, Ocean County, New Jersey:** Provide assistance to the Borough's Land Use Official performing duties relating to zoning issues within the Borough. Tasks include reviews of zoning permit applications for the construction of new homes, raising existing homes, and all other permit-required land use activities regulated under the Borough's Land Use Regulations. Responsibilities include review of various site plans, plot plans, surveys, and/or architectural drawings to ensure compliance with Borough Ordinances. Also provide assistance to the Borough Engineer, performing site plan reviews and other various tasks. (2014 – 2017)



**Special Engineering Services, City of New Brunswick, Middlesex County, New Jersey:** Providing AutoCAD drafting, geographic information system (GIS) support, and inspection services for various roadway/traffic safety projects. Provided AutoCAD drafting and design for various standard construction details for the City Engineering Department. Provided GIS support for revisions to the City's Drug Free Zone, Election District, Public Parks, and Public Buildings maps. (2010 – 2021)

---

**George Papamakariou, II, PE**  
Project Engineer



Mr. Papamakariou has worked full-time in the Engineering & Construction Industry since 2017, and part-time (internships) since 2013. He has worked on both the Civil Engineering Consulting and Construction Project Management side of the industry. Before joining Van Cleef, Mr. Papamakariou was a full-time Project Engineer for a Construction Management firm in New York City, where he was involved in several large high-profile high-rise building projects (commercial and residential). During this time, his day-to-day activities included overseeing construction progress, RFI drafting and submission, shop drawing review and processing, QA/QC, design coordination, contractor coordination, scheduling, budgeting, field engineering, estimating/purchasing, payment review, and direct management of several contractors (structural, architectural, and MEP).

Since joining Van Cleef in January 2020 as a Design Engineer, Mr. Papamakariou has primarily worked in the Municipal Engineering and Water/Wastewater Engineering departments out of the Toms River office. His workload has generally consisted of construction plan design & specification preparation, AutoCAD drafting, engineering cost estimates, engineering inspection, plot plan/dune structure application reviews, shop drawing reviews, and construction project management. The general Scope of Work for the projects he has been involved in include roadway reconstruction & drainage, pump station design, sanitary sewer rehabilitation & design, water main design/relocation, well redevelopment, beach/waterfront improvements, NJDOT/CAFRA Applications, and Land Development. Mr. Papamakariou has also worked with the Freehold office's Highway Engineering department, preparing construction plans and MPT plans for PSE&G utility improvement projects.

#### PROJECT EXPERIENCE

**Glenbourne Drive Sewer Pump Station Rehabilitation, Township of Boonton, Morris County, New Jersey:** Design Engineer responsible for the preparation of specifications, design drawings, cost estimation, bid packages and shop drawing reviews for the upgrade of existing raw sewage pumps, rehabilitation of existing wet wells, installation of above grade valve vault, and site improvements.

**Lake Drive Water Main Extension, Borough of Island Heights, Ocean County, New Jersey:** Design Engineer for the replacement of approximately 1,200 LF of water main. Specific tasks conducted for this project included preparation of contract specifications, drawings, cost estimate, coordination with Borough, manufacturers and Contractor, bid documents, construction administration, and shop drawing review.

**2024 MUA Engineer for Jackson Township Municipal Utilities Authority, Ocean County New Jersey:** Project Engineer on Van Cleef Engineering Team appointed as the Authority Engineer, assisting John R. Berens, P.E. (Official MUA Engineer) with day-to-day engineering related tasks for the Jackson Township MUA. These tasks generally include Developer Reviews for Preliminary, Tentative, and Final Approvals for Water & Sewer Utilities, Construction Administration, Contractor and Inspection Coordination, Preconstruction Meetings, Shop Drawing Reviews, Project Closeout, Monthly Reports, Technical Pump Station Reviews, and assisting with/working on any Engineering Projects presented by the JTMUA.

**Marina Area Pump Station – Bypass Connection & Meter Evaluation, The Atlantic City Sewerage Co., Atlantic City, New Jersey:** Project Engineer responsible for assisting Project Manager/Lead Designer in performing a comprehensive evaluation for a bypass connection and flow meter at the Marina Area Pump Station (MAPS). Specific tasks conducted for this project included review of existing system head curves, pump curves, and site layout to determine locations for bypass connection and flow meter.

---

#### LICENSES/CERTIFICATIONS

**Licensed Professional Engineer**  
NJ Licence #24GE05909400

OSHA-30 Construction Safety  
Trained

#### EDUCATION

Master of Science, Construction  
Management. Stevens Institute  
of Technology, 2017.

Bachelor of Engineering, Civil  
Engineering. Stevens Institute  
of Technology, 2017.

#### PROFESSIONAL AFFILIATIONS

A.S.C.E., American Society of  
Civil Engineering

New Jersey Water Association  
(NJWEA)

Water Environment Federation  
(WEF)

---



**Replacement of Potable Water Meters, Borough of Island Heights, Ocean County New Jersey:** Project Engineer for the replacement of approximately 918 residential water meters with ultra-sonic style meters. Specific tasks conducted for this project included preparation of contract documents, cost estimate, coordination with Borough and manufacturers, and bidding documents. Bidding duties included attendance of Prebid meeting, review of bid documents, issuance of Notice of Award & Notice to Proceed and preparation and attendance of preconstruction meeting.

**Removal and Replacement of Potable Water Meters, Borough of Ocean Gate, Ocean County New Jersey:** Project Engineer for the replacement of approximately 1,152 residential water meters with positive displacement style meters. Specific tasks conducted for this project included preparation of contract documents, cost estimate, coordination with Borough and manufacturers, and bidding documents. Bidding duties included attendance of Prebid meeting, review of bid documents, issuance of Notice of Award & Notice to Proceed and preparation and attendance of preconstruction meeting.

**Harlingen Village Pump Station & Sanitary Sewer Main – Montgomery Township, New Jersey:** Design engineer for analysis of existing site conditions and conceptual design of proposed pump station, force main, sanitary sewer main and laterals for proposed 22.189 acre Harlingen Village residential development and off-site sewer main developments (plans and specifications).

**Harriet's Mobile Home Park Pump Station & Sanitary Sewer Main – Readington Township, New Jersey:** Design engineer for analysis of existing site conditions and design, cost estimation and permitting of proposed pump station, force main, on-site sanitary sewer main and laterals for upgrading existing mobile home park from a private septic system to connecting to the public sanitary sewer main system along Route 22.

**Route 38 & South Church Street Reconstruction – Water Main & Sewer Main Relocation and Bridge Crossing – Moorestown Township, New Jersey:** Design Engineer for analysis of existing conditions and design, coordination, and cost estimation of the relocation design of water and sewer main utility mains for a NJDOT Roadway Reconstruction project.

**Hydraulic Analysis & Modeling – Existing System and Proposed Developments – Seaside Heights, New Jersey:** Created a Hydraulic Water Main Model of the Borough of Seaside Heights and performed hardy-cross, Extended-Period Simulation hydraulic analysis on the current water main system using KY Pipe, simulating both existing and proposed flow demand conditions. Performed field flow testing on hydrants to analyze the pipe conditions in the system to more accurately simulate system functionality. Coordinated with the Borough Water Department to determinate 24-hour diurnals and peaking factors, as well as Storage Tank and Well flow functionality.

**Hydraulic Analysis & Modeling – Bohler Engineering for Old Bridge Municipal Utilities Authority – Old Bridge Township, New Jersey:** Performed hardy-cross, steady-state hydraulic analysis on proposed on-site water mains for various land developments in Old Bridge using the KY Pipe program to determine system NJDEP conformance/feasibility in regards to provided water capacity and pressures available at various flow demand conditions, inclusive of fire flow capabilities. Analyzed and provided summarization reports to the Site Engineer Bohler Engineering with recommendations on how to proceed based upon findings.

**Well #6 Development – Borough of Lavallette, New Jersey:** Design engineer for analysis of existing site conditions, design and NJDEP Permit submissions of replacement Well #6, demolition of old Wells #3 and #5, temporary system plans, and all other associated system components. Involved in the coordination with Architectural, Structural, and Electrical disciplines.

**Annual TV & Cleaning of Authority Interceptor System, Phases 2 & 3 – Bayshore Regional Sewerage Authority, Monmouth, New Jersey:** Performed TV/Cleaning field inspection videos of existing sewer mains/manholes and determined the condition of the pipe, checking for hydrogen sulfide damage, joint/lateral leaks, tuberculation, infiltration/mineral deposits, and compromised structural integrity. Created tables grading defects for each pipe/manhole, preparing a summary report. Recommendations were made to re-inspect, rehabilitate (grout, line in place), or replace damaged materials. Quantities included 4.21 miles of ACP/DIP/PCCP ranging from 8" to 30" diameter.



**Colonial Drive Bridge Replacement – Water Main Relocation – Manchester, New Jersey:** Design Engineer for analysis of existing conditions and design of proposed 160 LF water main relocation at the bridge crossing associated with the NB & SB Colonial Drive Bridge Replacement project (plans and specifications). Coordinated with the Van Cleef Structural team for compatibility with bridge design.

**Palmer Road Bridge Replacement – Water Main Relocation – Denville, New Jersey:** Design Engineer for analysis of existing conditions and design of proposed 154 LF water main relocation at the bridge crossing associated with the Palmer Road Bridge Replacement project (plans & specifications). Coordinated with the Van Cleef Structural team for compatibility with bridge design.

**Plot Plan Reviews, Lacey Township, New Jersey:** Reviewed Plot Plan applications and supporting documents for new construction/renovations/pool developments for conformance to the Township's Land Use Regulations.

**Bay Head Inflow & Infiltration Study – Borough of Bay Head, New Jersey:** Preparation of report & field data collection & analysis of complete I & I sewer flow study of the Borough of Bay Head's sanitary sewer main system, inclusive of rain data, daily flow rates, and total infiltration per drainage basin calculations. Construction inspection of sewer meter installation, sewer mapping confirmation, and manhole conditions.

**New Jersey Department of Transportation Municipal Aid Program (Roadway Reconstruction & Drainage):** Preparation of Municipal Aid applications to obtain State grants for numerous roadway infrastructure projects. Preparation of contract specifications and plans and project construction management and inspection on several of these road improvement projects in the Borough of South Toms River, Lavallette, Island Heights, Seaside Heights, and Lacey Township.

**Federal Community Development Block Grants (CDBG):** Preparation of CDBG applications to obtain Federal grants for numerous roadway infrastructure projects. Preparation of contract specifications and plans on several of these projects, inclusive of sidewalk & ADA ramp redevelopment, park redevelopment, and utility improvement projects in the Borough of South Toms River, Lavallette, Island Heights, and Seaside Heights.

**Planning Board Engineer & Resolution Compliance Reviews, Various Municipalities:** Project Engineer providing/assisting Planning Board Engineer and Resolution Compliance Reviews in regards to Land Development and Renovation applications in several Municipalities where VCEA is the Planning Board Engineer. Reviews were primarily based upon Zoning, Land Development, and NJDEP/CAFRA Flood Ordinances in each respective Municipality.

**Dune Application Reviews – Borough of Bay Head, New Jersey:** Reviewed dune application permits and supporting documents/drawings for new dune structures (platforms and walkways) for conformance to the Borough Ordinance and State CAFRA regulations.

**Street Road Opening Permits and Gas Main Renewals – Borough of South Toms River, New Jersey:** Reviewed road opening application permits and supporting documents/drawings for proposed utility improvement projects involving the opening of existing roadways and roadway restoration for conformance to the Borough Ordinance. Construction management of roadway restoration inspection services for on-going gas main renewal projects in the Borough.

**North Boat Ramp Replacement – Borough of Seaside Heights, New Jersey:** Design engineer for analysis of existing site conditions and conceptual plan design of proposed North Boat Ramp replacement, inclusive of Ramp design, beach infill/dredging, and grading tie-into existing lot.

**Land Development Drafting – New Jersey (Various Locations):** drafted grading plans for several private-sector Land Development projects.



**PSE&G Utility Improvements MPT Plans – New Jersey (Various Locations):** prepared (designed & drafted) Traffic Control & Maintenance & Protection of Traffic plans for various PSE&G utility improvement locations throughout New Jersey in conformance with NJDOT specifications and drawings.

**Gotham 1&3 (Commercial Building) – New York City, New York:** Construction project management/field engineering of a 1 million square-foot commercial core-in-shell building located in Long Island City, NY. Daily activities throughout the course of the project included the coordination of various contractors, QA/QC, document control, permitting, budgeting, estimates, scheduling, design coordination, contractor procurement, field engineering (i.e. RFI submission), and preliminary submittal review. Directly responsible for Misc. Metal (steel), low-voltage, doors/hardware, and millwork contractors. Assisted project manager in running curtain wall, carpentry, and waterproofing contractors.

**City View Tower (Residential Building) – New York City, New York:** Construction project management/field engineering of a 1 million square-foot residential building located in Long Island City, NY. Daily activities throughout the course of the project included the coordination of various contractors, QA /QC, document control, permitting, budgeting, estimates, scheduling, design coordination, contractor procurement, field engineering (i.e. RFI submission), and preliminary submittal review.

**The HUB (Residential Building) – New York City, New York:** Construction project management/field engineering of a 1 million square-foot residential building located in Brooklyn, NY. Daily activities throughout the course of the project included the coordination of various contractors, QA/QC, document control, permitting, budgeting, estimates, scheduling, design coordination, contractor procurement, field engineering (i.e. RFI submission), and preliminary submittal review. Directly responsible for final Contractor Closeout.



---

**Irene K. Battaglia, PE**  
Professional Engineer

---



Ms. Battaglia has a diverse background in municipal engineering and local government administration. Having served multiple terms on her town's Planning Board and Council, including two years as Council President, her experience bridges engineering and municipal management. Her expertise lies in regulatory compliance, land use analysis, and municipal engineering. Her past engineering work at the Wisconsin DOT includes oversight for the state's experimental pavement research program, and management of pavement warranty specifications for asphalt and concrete pavement performance.

### REPRESENTATIVE PROJECTS

#### Stormwater Management Permit Compliance

- Manage NJDEP Tier A and Tier B municipal stormwater permitting programs.
- Prepare and revise municipal stormwater control ordinances to maintain compliance with State regulations.
- Develop Municipal Stormwater Pollution Prevention Plans, Municipal Stormwater Management Plans, and Watershed Inventory Plans.
- Coordinate with private stormwater management facility owners to confirm maintenance and rehabilitation reporting.
- Prepare grant applications for program enforcement funding assistance.

#### Asset Management Plan Development – Water Supply and Wastewater Treatment

- Inventory utility infrastructure assets to create comprehensive system-wide database.
- Review asset condition and utilize EPA and Federal database software to calculate risk and failure potential within the system.
- Recommend repair and rehabilitation programs.
- Project future investment needs to assist with utility budgeting development and planning.
- Develop GIS asset mapping deliverables.

#### Freshwater Lake Dredging

- Plan and manage large-scale municipal lake dredging projects to enhance water quality and restore recreational value.
- Prepare plans and specifications, communicate with contractors, coordinate bid openings and review responsive submissions.
- Develop project timeline to ensure compliance with State and Federal permitting requirements.
- Prepare submissions for State and County regulatory agencies, including NJDEP and soil conservation district.
- Communicate with residents regarding sensitive construction issues.

#### Municipal Road Improvement Programs

- Construction plan development for low- and medium-volume road resurfacing and reconstruction projects.
- Conduct field analyses of local and residential pavements to inventory distress.
- Recommend repair and rehabilitation schedules, estimate design and construction costs.
- ADA design compliance.
- Prepare and execute requests for quotations, and specifications for public bids.

---

### LICENSES/CERTIFICATION

Licensed Professional Engineer  
NJ #24GE06117900

### EDUCATION

M.S., Civil and Environmental  
Engineering, University of  
Wisconsin-Madison, 2006

B.S., Civil Engineering,  
Lehigh University, Bethlehem  
PA, 2004

### PUBLICATIONS

"Proposed Behavioral Model  
for Deicer Scaling Resistance of  
Slag Cement Concrete,"  
American Society of Civil  
Engineers, Journal of Materials  
in Civil Engineering, Vol. 22,  
Issue 4, April 2010 (co-authors  
Munoz, J.F., and Cramer, S.M.)

"Pavement Warranty Program  
in Wisconsin: 12-Year  
Evaluation," Wisconsin DOT,  
Report number WI-03-09, June  
2009.

"Evaluation of Various Hot Mix  
Asphalt Pavement Thicknesses  
over Rubblized Concrete  
Pavement," Wisconsin DOT,  
Report number FEP-07-10, July  
2010.

"Dowel Bar Retrofit  
Performance in Wisconsin,"  
Wisconsin DOT, Report number  
WI-02-10, May 2010.

---



**Municipal Parks and Recreation**

- Develop design plans and specifications for recreational resources including volleyball, basketball, and pickleball courts.
- Prepare bicycle path and “share-the-road” feasibility studies.

**Municipal Infrastructure Loan and Financing Programs**

- Prepare engineering applications for USDA Rural Development and NJ Infrastructure Trust financing.
- Manage online application and submission platforms, including utilization of the State’s H2Loans online program.

**Planning and Zoning Board Engineering Support**

- Review development applications for completeness, technical standards compliance, and local ordinance and zoning regulation conformance.
- Applications include Major Development, subdivision, lot line adjustment, stormwater management design, septic installation, construction, Historic Preservation, and variance relief.
- Review applications for compliance with State regulatory agency rules, including NJDEP Water Quality and Stormwater Control, and the Highlands Council Planning and Preservation Areas.

---

**CONFERENCE PRESENTATIONS**

Association of Environmental Authorities, Nov. 17, 2021. “21<sup>st</sup> Century Asset Management Plan Development”.

New Jersey Water Environment Association Fall Technology Transfer Seminar, Oct. 26, 2021. “21<sup>st</sup> Century Asset Management Plan Development”.

---

**PREVIOUS EXPERIENCE**

**Rocky Hill Borough Councilperson (elected position)**

**2018 to 2022**

*Council President*

*Chair, Finance Committee:* Led annual budget workshop, developed future fiscal strategy, communicated budget appropriations to Community.

*Chair, Water, Sewer & Environment Committee:* Led investigation of stormwater infiltration into sanitary sewer system, prioritized solutions to address more stringent NJDEP drinking water regulations, led effort to reassess utility connection permitting and fee structure, evaluated necessary capital improvements for water and sewer utility infrastructure.

*Affordable Housing:* Council representative for case management of Borough’s builder’s remedy lawsuit. Successfully finalized negotiations.

**Planning and Zoning Board Member (appointed position)**

**2015 to 2022**

Master Plan re-examination report contributor and editor. Created online survey to generate public feedback about planning-related issues in the Borough. Researched and developed cottage housing as an innovative solution to the Borough’s third round affordable housing requirements. Council liaison and Historic Review Subcommittee member.

**Engineering Research Consultant**

**2009 to 2012**

Analyzed field observations and performance data to assess long-term performance of experimental highway pavement test sections under evaluation by the Wisconsin DOT research program. Topics included: Full depth shoulders, partial depth repair of concrete pavement, rubblized pavement overlays, dowel bar retrofit, and corrosion-resistant dowel bars. Finalized a number of highway pavement research studies, thus satisfying state and federal research funding requirements. Fulfilled three private contracts with the Construction and Materials Support Center at the University of Wisconsin-Madison.



**Pavement Research and Warranty Engineer**

**2006 to 2009**

**Wisconsin Department of Transportation**

Managed state-wide HMA and PCC pavement warranty program and specifications. Composed, edited and distributed research project reports for in-service pavement test sections to evaluate innovative construction materials and methods. Technical representative for the Wisconsin Highway Research Program, and other regional, national and university research boards and best practices committees.

**Graduate Research Assistant**

**2004 to 2006**

**University of Wisconsin-Madison**

Executed a large-scale laboratory research project for the Wisconsin DOT evaluating the use of slag cement in concrete highway pavement. Supervised an undergraduate laboratory assistant.

**Volunteer Work**

Fanfare for Music, President of the Board, 2023 to present

Rocky Hill Cooperative Nursery School, Vice President of the Board, 2016 to 2018



---

## Robert Jost, PE

### Director of Geotechnical Engineering



Mr. Jost has over 20 years' experience providing geotechnical engineering services. As Director of Geotechnical Engineering, Mr. Jost is responsible for project management and coordination of all geotechnical engineering and construction review projects. His specialties include shallow and deep foundation design, ground improvement recommendations, pavement design, soils analysis, earth pressures, and feasibility studies. His technical responsibilities include development and implementation of geotechnical field investigations as well as oversight of all field staff and project management of all construction review projects in his area. His responsibilities include generation and review of all proposals, reports, and other documents generated for the above services.

#### PROJECT EXPERIENCE

##### King Street Realignment

**Client: Confidential Client**

**Location: City of Gloucester, Camden County, NJ**

Geotechnical Division Director for a geotechnical engineering study for the proposed realignment of King Street. Exploration included soil borings, laboratory testing, data analysis, and preparation and review of the geotechnical engineering report. The pavement section design was performed to meet the minimum thickness requirements established by Camden County.

##### City Hall ADA Ramp

**Client: Confidential Client**

**Location: City of Camden, Camden County, NJ**

Geotechnical Division Director for a geotechnical engineering study for the proposed ADA ramp. The geotechnical study included soil borings, laboratory testing, data analysis, helical pile design, and preparation and review of the geotechnical engineering report.

##### Camden's Pride Annex Building.

**Client: Confidential Client**

**Location: City of Camden, Camden County, NJ**

Geotechnical Division Director for a geotechnical engineering study and preliminary stormwater investigation for the proposed 9,000 square foot building. Exploration included soil borings, stormwater test pits, seasonal high groundwater evaluation, in-situ stormwater testing, data analysis, calculated infiltration rates, and preparation and review of the geotechnical engineering report inclusive of foundation and site improvement recommendations.

##### Camden County Improvement Authority (CCIA) Multi Agency Center (MAC)

**Client: Confidential Client**

**Location: City of Camden, Camden County, NJ**

Geotechnical Division Director for a geotechnical engineering study for the proposed CCIA MAC Building. The geotechnical study included soil borings, laboratory testing, data analysis, and preparation and review of the geotechnical engineering report. Based on review of the proposed column and wall loading and the existing subsurface conditions, the settlement analyses concluded shallow foundations would be permissible as long as the recommended soil bearing capacity was acceptable.

##### Devon Self Storage Facility

**Client: Devon Self storage**

**Location: City of Camden, Camden County, NJ**

Geotechnical Division Director for a geotechnical engineering study for the proposed self storage facility. The geotechnical study included soil borings, laboratory testing, data analysis, and preparation and review of the geotechnical engineering

---

#### LICENSES/CERTIFICATIONS

Professional Engineer:

New Jersey #24GE051609

Pennsylvania #PE086838

Delaware #20012

#### EDUCATION

MS Civil Engineering, Rowan University, 2013

B.S. Materials Science and Engineering, Case Western Reserve University, 2004

#### PROFESSIONAL AFFILIATIONS

American Society of Civil Engineers (ASCE), Member

---



report. Based on review of the proposed column and wall loading and the existing subsurface conditions, the settlement analyses concluded shallow foundations would be permissible for the self storage facility, but the office area would need an alternative foundation system. A helical pile-supported mat foundation was eventually specified and designed to support the office area wall, column, and floor slab loading.

**Smuggler's Cove Bulkhead and Residential Buildings**

**Client: OSK Architects**

**Location: Borough of Stone Harbor, Cape May County, NJ**

Geotechnical Division Director for a geotechnical engineering study for the proposed bulkhead and residential duplexes with in-ground pools. The geotechnical study included soil borings, laboratory testing, data analysis, and preparation and review of the geotechnical engineering report including timber pile design.

**Barnegat Branch Trail**

**Client: Confidential Client**

**Location: Township of Lacey, Ocean County, NJ**

Geotechnical Division Director for a stormwater study for the conversion of an existing railroad bed to trail (Rails to Trails) along the Barnegat Branch Trail between Cedar Avenue and Musket Road. Exploration included private utility location, test pits, in-situ stormwater testing, data analysis, and calculated infiltration rates.

**Bridge 4-B-87**

**Client: Confidential Client**

**Location: Township of Plainsboro, Middlesex County, NJ**

Geotechnical Division Director who oversaw geophysical and subsurface exploration to provide engineering recommendations for the replacement of Middlesex County Bridge 4-B-87. Geotechnical engineering services included soil borings, laboratory testing, and preparation and review of the geotechnical engineering report in accordance with AASHTO and NJDOT standards.

**Bridge 4-B-98**

**Client: Confidential Client**

**Location: Townships of Cranbury and East Windsor, Middlesex County, NJ**

Geotechnical Division Director who oversaw geophysical and subsurface exploration to provide engineering recommendations for the replacement of Middlesex County Bridge 4-B-98. Geotechnical engineering services included soil borings, laboratory testing, and preparation and review of the geotechnical engineering report in accordance with AASHTO and NJDOT standards.

**Smith's Creek Pedestrian Bridge**

**Client: Confidential Client**

**Location: Township of Woodbridge, Middlesex County, NJ**

Geotechnical Division Director who oversaw geophysical and subsurface exploration to provide engineering recommendations for the proposed pedestrian bridge. Geotechnical engineering services included soil borings, laboratory testing, and preparation and review of the geotechnical engineering report in accordance with AASHTO and NJDOT standards.

**Spark Car Wash**

**Client: BL Companies**

**Location: Township of Lacey, Ocean County, NJ**

Geotechnical Division Director who Conducted a preliminary geotechnical engineering study and final stormwater investigation for the proposed car wash site development scheme. Exploration included soil borings, stormwater test borings, in-situ stormwater testing, data analysis, calculated infiltration rates, and preparation and review of the geotechnical engineering report.

**Toms River Surf Club**

**Client: Confidential Client**

**Location: Township of Toms River, Ocean County, NJ**

Geotechnical Division Director who oversaw geophysical and subsurface exploration to provide engineering recommendations for a new elevated boardwalk and pavilion structure. Geotechnical engineering services included soil borings, laboratory testing, and preparation and review of the geotechnical engineering report.



---

**Joseph Canada, P.L.S.**  
Director of Surveying



Mr. Canada has over 20 years of diverse Land Surveying experience for a variety of private and municipal projects. He is a graduate of the New Jersey Institute of Technology with a Bachelor of Science degree in Land Surveying. His Surveying experience has enabled him to become an expert in property line resolution, record research and construction services. He also has experience using drone technology in acquiring field data to use for various design and right of way projects.

**WORK EXPERIENCE**

**Emley Farm Subdivision** – Survey Project Leader for a Minor Subdivision for the creation of a new Farm Parcel in Plumsted. Performed map and easement research for both parcels. Prepared subdivision maps, parcel metes & bounds descriptions, as well as descriptions for future access easements on the property. Reviewed and approved by the State Agricultural Development Committee.

**Ocean County Lacey Road Base Map** – Survey Team Leader for road reconstruction services along Lacey Road for Ocean County. The project included traditional field crew obtaining cross sections as well as a drone engineer obtaining topographic data for the entire length of the road. Prepared base maps using acquired data to be used by the Engineering Team for design purposes.

**Millstone Peplowski Farm Survey and Farmland Preservation Easement** – Project Leader for a Farmland Preservation Easement Project in Millstone, New Jersey. Work included performing deed and filed map research, locating all features on and around the property, recover and locate former monumentation and boundary resolution. Prepared a Survey of Property map along with descriptions for Farmland Preservation Easement, Exception Areas, Right of Way conveyance and Utility Easement.

**Community Medical Center Roof Topography** – Survey Team Leader for planimetric and topographic location of a roof at Community Medical Center Hospital in Toms River, New Jersey for the design of a helicopter pad. Work included locating all features on the roof with their elevations as well as difference in height to the base of the hospital for the purpose of height restrictions. Prepared a topographic map to aid in the design of the helicopter pad.

**Brooklyn Avenue Road Improvements Base Map** – Survey Team Leader for Right of Way and Handicap Ramp improvements along Brooklyn Avenue in the Borough of Lavallette. Work included obtaining field measurements of the road with 50-foot interval cross-sections and the location of all physical features within the project limits including utilities. Prepared a base map showing existing conditions of the roadway aiding in the design of pavement, curb and driveway improvements as well as Construction and Traffic Control Plans.

**Gas Line Location Maps and Green Sheets** – Prepared Gas Line Location Maps and Green Sheets for excavated areas of underground gas pipelines located in various locations in New Jersey. Survey Team Leader for obtaining field location of excavated gas pipes as well as control set in the surrounding area for recovery at a later date. Some locations also included boundary location and monumentation recovery.

**Waterfront Development and Coastal General Permit for Boat Ramp Reconstruction** – Survey Team Leader tasked with locating existing conditions of boat ramp, bulkhead, surrounding features, Mean High Water Line, Mean Low Water Line and Mean Higher High Line. Researched Tidelands and Riparian Rights for the project property and prepared a Topographic Survey of the area for use in developing permit drawings for Boat Ramp Reconstruction and Bulkhead Replacement.

---

**LICENSES/CERTIFICATIONS**

Licensed Professional Land Surveyor: NJ #43333

**EDUCATION**

New Jersey Institute of Technology, Newark, New Jersey, Bachelor of Science in Surveying Engineering Technology, 2012

**PROFESSIONAL AFFILIATIONS**

Garden State Land Surveyors Alliance

---

**Commercial Construction Stakeout in Toms River** – Survey Team Leader responsible for locating control and staking out drainage structures, curb and poles. After construction was complete, prepared a site as-built plan reflecting all improvements to the site as it is constructed. The plan includes the elevation around the perimeter of the building, finish floor elevations, top and bottom of curbs and spot elevations throughout the site, as-built drainage system showing top of curb, grate elevations, pipe inverts, length and slope percentage, top and bottom elevation of detention basin, number of marked parking spaces, fire zone and fire lanes.

**Monitoring Well Certification Forms in Lakehurst** – Project Leader responsible for establishing Horizontal and Vertical control in New Jersey State Plane and NAVD88 and measuring Top of inner Casing (cap off), Top of Outer Casing and Elevation of Ground around each monitoring well. Prepared Certification Form B's for all wells to be used for future site development.

**Seaside Heights Kiosk Replacement Project – Seaside Heights Kiosk Replacement Project** – The project called for removing or replacing 42 Kiosk concrete footings and associated bollards, constructing 18 new Kiosk concrete footings and installing new bollards, preparing 49 kiosks with solar power and removing or replacing all previous kiosk signs throughout Seaside Heights. As Survey Team Leader, was responsible for providing maps of all kiosks which required necessary changes. This included setting Horizontal and Vertical Control, measuring to existing kiosks and surrounding features such as signs, curbs, utilities and striping. Prepared existing condition maps for various sites throughout the project.

**Lavallette Sand Dune Maintenance Plans** – Survey Team Leader responsible for using drone imagery to prepare existing condition maps showing the current location of sand dunes along beach front properties in the Borough of Lavallette. This included locating existing survey control to determine the location of boundary lines along oceanfront properties, setting markers along said property lines to identify boundary locations, locate existing structures on oceanfront properties to identify location for proposed maintenance path, and obtaining orthographic imagery of sand dunes using drone technology.

**Cranberry Hill Estates Road Improvements in Lacey Township, New Jersey** – Survey Team Leader for Right of Way and Handicap Ramp improvements in the Township of Lacey. Work included setting control, obtaining field measurements of the road with 50-foot cross-sections and the location of all physical features within the project limits including drainage. Prepared existing conditions maps showing all features within the project limits to aid in re-profiling the roadway, modify existing drainage structures and re-striping.

**Barnegat Land Swap Between Ocean County and State of New Jersey** – Surveyor responsible for researching project deeds and maps, locating existing control, measuring to all features on the properties, and resolving boundaries locations of each parcel. Prepared Green Acres Survey Plans for all properties, metes & bounds descriptions and certification forms for the diversion and replacement parcels. Set monuments according to Green Acres Standards.

**Overbrook Farm Survey for Monmouth County in Colts Neck, New Jersey** – Surveyor responsible for preparing a REPI Conservation Easement on behalf of the U.S. Navy in Colts Neck, New Jersey. Researched project deeds and maps, resolving boundary evidence based off evidence found in the field and evidence based in reference documents. Prepared metes & bounds descriptions for said REPI easement and other easements created on the lot.



---

**Mason Herrman, GISP**  
Geospatial Manager



Mason Herrman has been working at Van Cleef Engineering Associates as a Senior Geospatial Analyst for 4 years. In that time, he has provided GIS support for 78 municipalities as well as a multitude of private clients throughout New Jersey and Pennsylvania. Mr. Herrman's expertise in GIS has been a keystone in Van Cleef Engineering Associates' Professional Planning department; providing spatial analysis, mapping, and statistics for every municipality Van Cleef offers planning services to. These projects include, Master Plan Reexamination Reports, Hazard Vulnerability Plans, Area in Need of Redevelopment Plans, Highlands Assessments, etc. Mason and his team also received American Planning Association (NJ) 2020 Outstanding Plan Award for their Circulation Plan – Bike and Pedestrian Safety.

One of Mr. Herrman's greatest contributions through GIS has been in the Utility Asset Management Sector. He specializes in mapping and managing utility systems through GIS including, MS4 Stormwater, Sanitary Sewer, Water Utility, and Road Improvement. He is a graduate of Rutgers, The State University of New Jersey with a Bachelor of Science degree in Ecology, Evolution, and Natural Resources and Certification in Environmental Geomatics (GIS). With over 10 years of experience working in a variety of ecological/wildlife conservation settings, Mr. Herrman has not only brought the service of GIS to Van Cleef but continues to push the capabilities of GIS technology while operating with mindfulness of our environment and ecosystems.

**WORK EXPERIENCE**

**Seaside Heights Build Out Analysis and Hazard Vulnerability Plan:** Responsible for the research, planning, and execution of all stages of GIS work for this multi-tier spatial analysis and report. From the buildout analysis which determines where suitable areas for development still exist within the municipality to the newly legislated Hazard Vulnerability plan. The Hazard Vulnerability plan takes into consideration present-development, infrastructure, demographics, and environmental data, etc. to extrapolate the effects of Climate change and create a plan to increase coastal community resiliency. This project was completed in conjunction with Van Cleef Engineering Associate's planning department.

**Clinton Sanitary Sewer Asset Management Plan:** Responsible for analyzing multiple aspects of the Clinton Sewer Department's collection and conveyance system and developed a comprehensive AMP report for the Town to reference as it plans for future rehabilitation projects. The scope of work included an inventory and condition assessment of network assets, a system-wide risk and criticality analysis utilizing EPA asset management planning software, development of seven year recommended rehabilitation program, and budget forecasting for near- and long-term asset renewal and system monitoring strategies. A standout of the deliverables provided to the Town included comprehensive interactive web-map application and supporting documents developed on ArcGIS Online and ArcMap Desktop. The results of this study are already being used to apply for federal funding under the anticipated infrastructure improvement bill.

---

**EDUCATION**

Bachelor of Science, School of Environmental and Biological Sciences, Rutgers, The State University of New Jersey - May, 2018

Associate of Science, Warren County Community College - May, 2016

**ADDITIONAL TRAINING**

Project WET teaching certificate: (Education that promotes awareness of water and empowers community action to solve complex hydrologic issues).

Project Learning Tree certificate: (Workshop that helps educators integrate environmental education in outdoor settings, to teach students about the importance of sustainable forestry).

---



**Wharton Stormwater Drainage Study, Borough of Wharton, Morris County, NJ:** Responsible for acquisition of field data which includes obtaining geospatial and attribute characteristics of existing features using a Trimble Geo7x GNSS. Over the course of this project 850 stormwater structures have been located and collected which includes Basins, Inlets, Manholes, and Outfalls throughout the Borough of Wharton. Additional responsibilities include post-processing collected data in GPS Pathfinder Office, and analysis/mapping using ArcMap. Data was collected and submitted using NJDEP MS4 stormwater collection standards.

**Raritan Borough Circulation Plan Study, Borough of Raritan, Somerset County, NJ:** Responsible for the analysis and creation of maps using ArcGIS to enhance project proposal and project presentation capabilities. This project was awarded 2020 Outstanding Plan Award by the American Planning Association – New Jersey Chapter (APA – NJ) for a comprehensive plan that support safe passage, connectivity and sustainability.

**Manville Redevelopment and Rehabilitation Study, Borough of Manville, Somerset County, NJ:** Responsible for the analysis and creation of maps using ArcGIS to enhance project proposal and project presentation capabilities. Maps created include: Study Area Map, Existing Land Uses Map, Flood Risk Map, Census Map, and Change in Population Map.

**Manville Neighborhood Preservation Program Study, Borough of Manville, Somerset County, NJ:** Responsible for the analysis and creation of maps using ArcGIS to enhance project proposal and project presentation capabilities. Research and development of geospatial data layers using existing tabular information to create needed maps. Maps created include: Community Assets Map, Open Space & Recreational Land Maps, Green & Blue Acres Maps, and Zoning Maps.

**Wetland Stakeout, Raritan Township, Hunterdon County, NJ:** Responsible for locating and staking wetlands flags along riparian zone to indicate wetland areas. Data was processed and mapped for future use in the project.

**Phillipsburg Land Use Plan Study, Town of Phillipsburg, Warren County, NJ:** Responsible for the analysis and creation of maps using ArcGIS to enhance project proposal and project presentation capabilities. Maps created for this project include: Study Area Map, Land Use & Open Space Map, Present Zoning Map, Proposed Zoning Changes Map, Main Street Rehabilitation Map, and Developable Lands Suitability Analysis & Map.

**List of Professionally completed GIS projects:**

- MS4 Storm water / Drainage Studies
- Sanitary Sewer Studies
- Asset Management Planning
- Redevelopment Studies
- Neighborhood Preservation Program Studies
- Rehabilitation Studies
- Wetland Stakeouts
- Land Use Plan Studies
- Circulation Plan Studies
- Road Projects
- Interactive Web Map Application Design and Management
- Impermeable Surface Change Analyses
- Developable Suitability Analyses
- Municipal Zoning
- Municipal / Government Tax Maps
- Capacity Analyses
- Historic Preservation Projects
- Green Acres Projects
- Blue Acres Projects
- Flood Plain Analysis
- Tree Inventory / Forestry
- Solar Field Suitability Analyses
- Lead Pipe Study
- Subdivision Mapping
- Traffic Calming Analyses
- Municipal Sign Inventory
- Hazard Suitability Analyses
- Evacuation Route Planning / Mapping
- Climate Change Driven Sea Level Rise Analyses



---

**Timothy B. O'Donnell**  
Senior Construction Observer



Mr. O'Donnell has served as an Inspector and Designer on numerous public projects. His duties have included preparation of contract drawings and specifications and construction inspection of same. Mr. O'Donnell has assisted the Engineering staff in the preparation of reports and applications, clean/CCTV inspection of sewage collection systems and rehabilitation work, review of contract documents and shop drawings, and preparation of as-built drawings.

#### PROJECT EXPERIENCE

**Bayshore Regional Sewerage Authority, County of Monmouth:** Inspection services for cleaning and televising 12,500 LF of interceptor sewers ranging in size from 24"-60" in diameter.

**Lateral Cleanout Construction Phase I and 2, Borough of Seaside Heights:** Construction inspection of 1700 service lateral cleanouts as well as TV inspection of approximately 30,000 linear feet of service lateral pipe and various repairs.

**Water Distribution System Valve Replacement, Borough of Seaside Heights:** Construction Inspection of 42 gate valve installations, ranging in size from 4-inch diameter through 12-inch in diameter in Seaside Heights active water distribution system.

**Lateral Cleanout Construction Phases 1, 2 and 3, Jackson Township MUA:** Construction inspection of 400-service lateral cleanouts and other various repairs.

**Hampshire Hills Pump Station Rehabilitation, Jackson Township MUA:** Construction inspection of force main installation. Wet well repair and pump installation.

**Stormwater Phase II Permitting Regulations and Stormwater Management Rules:** Prepared municipal Stormwater Management Plans for the Boroughs of Seaside Heights, South Toms River, Lavallette and Island Heights.

**Oceanside Streets Reconstruction, Borough of Lavallette:** Construction inspection of road reconstruction of Oceanside Streets damaged by Super Storm Sandy.

**New Jersey Department of Transportation Route 35 Restoration, Borough of Lavallette:** Construction inspection of sanitary sewer main installation. Ductile iron pipe water main installation, including pressure testing, gate valve and copper service installation.

**Cured-in-Place Sanitary Sewer Main Lining, Borough of Point Pleasant Beach:** Construction inspection sanitary sewer main lining including lateral reinstatement.

**Sanitary Sewer Evaluation - Phase 1, Borough of Point Pleasant Beach:** Inspection services for cleaning and televising approximately 60,000 linear feet of 6"-12" diameter sewer main.

**Sanitary Sewer Evaluation - Phase 2, Borough of Point Pleasant Beach:** Inspection services for cleaning and televising approximately 82,000 linear feet of 6"-24" diameter sewer main.

**Clean and TV Inspection of Sanitary Sewer Collection System, Borough of Seaside Heights:** Performed inspection services for cleaning and televising 45,000 feet of TCP ranging in size from 8"-15" in diameter. TV inspection work provided data for determining cost effective sewer system rehabilitation procedures necessary to remove infiltration. Groundwater infiltration accounts for over 50% of the Borough's sewage flow.

---

#### EDUCATION

Civil Engineering Major,  
New Jersey Institute of  
Technology, Newark, NJ

Certified Traffic Control  
Coordinator

---



**Sanitary Manhole Rehabilitation - Phase 1, Borough of Seaside Heights:** Provided inspection services for the rehabilitation of approximately 90 sanitary sewer manholes, including bench and channel reconstruction, installation of new steps, replacement of frames and covers, installation of manhole encapsulation sleeve and cementitious lining of manhole walls and bench.

**Sanitary Sewer Infiltration/Inflow Removal, Borough of Lavallette**

- Provided Inspection Services for Cured-in-Place (CIP) Service Lateral Repair, Phase 1 & 2: Installation of CIP Liners through a 4" diameter clean-out to seal the laterals transition from 4" diameter to 6" diameter pipe in approximately 90 laterals for Phase 1 and 130 laterals in Phase 2.

- Provided Inspection Services for Clean and TV Sanitary Sewer System: Clean and closed circuit television inspect approximately 1660 services and 69,000 linear feet of sanitary sewer ranging in diameter from 8" to 21"; repaired pipe defects found during TV inspection by chemical grout and CIP repairs.

**Sanitary Sewer Evaluation - Phases 1 through 5, Jackson Township Municipal Utilities Authority:** Inspection services for cleaning and televising 58,000 ft, 52,500 ft, 51,000 ft, 56,500 ft, and 61,000 ft of 8"-15" diameter sewer mains in each respective phase. Work also included chemically sealing defective joints, CIP point repairs and service lateral inspections.

**Sanitary Sewer Evaluation - Phase 6B, Jackson Township Municipal Utilities Authority:** Inspection services for repairs of various defects found during the Sanitary Sewer Evaluation Program, including approximately 74,819 linear feet of 8-inch, 10-inch, 12-inch, 18-inch, 24-inch, and 30-inch diameter PVC and DIP sanitary sewer.

**Sanitary Sewer Evaluation, Borough of Bay Head:** Provided inspection services for cleaning and televising 42,000 feet of sanitary sewer pipe ranging in size 8"-15" in diameter. TV inspection work provided data for determining cost effective sanitary sewer rehabilitation.

**Recovery Management Systems Pump Station Upgrade, Marlboro Township:** Provided construction inspection services for sanitary pump station rehabilitation including grinder structure, new pumps and discharge pipes, valve chamber upgrade.

**Reconstruction of East County Line Road Phase III:** Provided construction inspection services of stormwater facility construction. Daily coordination with Ocean County Engineering as to progress and utility conflicts.

**New Jersey Department of Transportation Municipal Aid Program 2001 – 2023:** Preparation of Municipal Aid Grant Applications, design and construction inspection of multiple projects throughout the Boroughs of Lavallette, Seaside Heights, Island Heights, South Toms River and Lacey Township.

**Toll Brothers Seabreeze at Lacey Township:** Provided inspection services for stormwater facilities, curbing, sidewalk, road construction as well as Certificate of Occupancy inspections for 500 plus house subdivision.

**The Lofts at South Toms River Urban Renewal:** Provided construction inspection services of site work improvements including stormwater and sanitary sewer installation, concrete curb, sidewalk, and apron construction as well as site paving.

**Lake Barnegat Drive and Haines Street Intersection Signalization, Lacey Township:** Provided construction inspection of intersection re-alignment including concrete curb, sidewalk and handicap ramp construction, traffic signal and electrical component installation. Road reconstruction and final paving with re-alignment striping.



# SECTION 4. REQUIRED FORMS AND CERTIFICATES

---

# FEE SCHEDULE

Van Cleef believes that working on an hourly basis allows our clients to compensate us for only the work that they request. Van Cleef provides detailed invoicing of time spent on each project that is forwarded to the municipality for payment. Where the project has a definite timeline and specific task, such as a Capital Project, a fee (lump sum or budget) will be developed, and the billing will not exceed that agreed upon amount without prior authorization.

The individuals who potentially will be assigned to work with the Township will be charged at the billing titles and rates outlined in the attached proposed 2026 Rate Schedule.

**2026 Rate Schedule**

**Barnegat Township**

| <b>Classification</b>              | <b>Hourly Rate</b> |
|------------------------------------|--------------------|
| Principal Engineer                 | \$185.00           |
| Senior Structural Engineer         | \$170.00           |
| Senior Geotechnical Engineer       | \$219.00           |
| Supervising Professional Engineer  | \$177.00           |
| Senior Professional Engineer       | \$174.00           |
| Professional Engineer              | \$173.00           |
| Project Engineer                   | \$140.00           |
| Director of Structural Engineering | \$209.00           |
| Senior Technical Manager           | \$156.00           |
| Professional Planner               | \$165.00           |
| Senior Project Manager             | \$172.00           |
| Project Manager                    | \$145.00           |
| Senior Project Designer            | \$133.00           |
| Technical Manager                  | \$150.00           |
| Project Designer                   | \$129.00           |
| Senior Engineering Technician      | \$128.00           |
| Engineering Technician             | \$115.00           |
| Senior CAD Technician              | \$127.00           |
| CAD Technician                     | \$108.00           |
| Draftsperson                       | \$101.00           |
| Geospatial Manager                 | \$140.00           |

| <b>Classification</b>              | <b>Hourly Rate</b> |
|------------------------------------|--------------------|
| Senior Geospatial Analyst          | \$130.00           |
| Geospatial Analyst                 | \$120.00           |
| Director of Landscape Architecture | \$168.00           |
| Landscape Architect                | \$140.00           |
| Geologist                          | \$150.00           |
| Resident Construction Observer     | \$130.00           |
| Senior Construction Observer       | \$128.00           |
| Construction Observer/Level 4      | \$116.00           |
| Construction Observer/Level 3      | \$110.00           |
| Construction Observer/Level 2      | \$99.00            |
| Director of Surveying              | \$175.00           |
| Senior Professional Surveyor       | \$150.00           |
| Professional Surveyor              | \$140.00           |
| Surveyor                           | \$128.00           |
| Senior Survey Technician           | \$110.00           |
| Technician/Level 2                 | \$95.00            |
| Technician/Level 1                 | \$83.00            |
| Administrative Assistant           | \$71.00            |
| Two-Person Field Crew              | \$205.00           |
| Robotic Unit - 1 Person Field Crew | \$135.00           |
| Unmanned Aerial Specialist         | \$150.00           |



**BARNEGAT TOWNSHIP  
900 WEST BAY AVENUE  
BARNEGAT, NJ 08005**



**BIDDER'S CHECKLIST**

The following checklist is provided for each bidder to check off documents submitted with their bid;

- A. Stockholders Disclosure Statement properly notarized listing stockholders or partners  
Owning ten percent (10%) or more of corporation or partnership stock.  
(Required)
- B. Non-Collusion Affidavit properly notarized. (Required)
- C. New Jersey Business Registration Certificate (BRC) (Required)
- D. Affirmative Action Evidence (Required)
- E. W-9 Form
- F. Authorized signatures on all forms.
- G. Request for Proposal for Professional Services Rate Sheet. (Required)

**PLEASE EXECUTE THIS FORM  
AND SUBMIT AS COVER PAGE  
WITH THE RFP PACKAGE**

Van Cleef Engineering Associates, LLC 32 Brower Lane, Hillsborough, NJ 08844

---

**Company Name** **Mailing address**

Cynthia V Norfleet cnorfleet@vancleefengineering.com 908-359-8291

---

**Primary contact** **Email** **Telephone**

www.vancleefengineering.com

---

**Website**

|   | <b>POSITION</b>                                 | <b>Check which service(s) you are applying for</b> | <b>Total "Not to exceed" 2026 contract amount</b> | <b>Hourly Rate/ Flat Rate</b> |
|---|---|--|---|-------------------------------|
| 1 | Township Attorney/Labor Counsel                 |  |   |                               |
| 2 | Conflict Township Attorney/Labor Counsel        |  |   |                               |
| 3 | Water/Sewer Attorney                            |  |   |                               |
| 4 | Conflict Water/Sewer Attorney                   |  |   |                               |
| 5 | Township and Water/Sewer Utility Pool Engineer  | X  |   |                               |
| 6 | Township Planner                                |  |   |                               |
| 7 | Township Auditor (Includes Water/Sewer Utility) |  |   |                               |
| 8 | Affordable Housing Administrative Agent         |  |   |                               |
| 9 | Township Bond Counsel                           |  |   |                               |

|    | <b>POSITION</b>                              | <b>Check which service(s) you are applying for</b> | <b>Total "Not to exceed" 2026 contract amount</b> | <b>Hourly Rate/ Flat Rate</b> |
|----|--|--|---|-------------------------------|
| 10 | Township Appraiser                           |  |   |                               |
| 11 | Prosecutor                                   |  |   |                               |
| 12 | Conflict Prosecutor                          |  |   |                               |
| 13 | Public Defender                              |  |   |                               |
| 14 | Conflict Public Defender                     |  |   |                               |
| 15 | Planning Board Attorney                      |  |   |                               |
| 16 | Conflict Planning Board Attorney             |  |   |                               |
| 17 | Planning Board Engineer/Professional Planner |  |   |                               |
| 18 | Conflict Planning Board Engineer             |  |   |                               |
| 19 | Zoning Board Attorney                        |  |   |                               |
| 20 | Conflict Zoning Board Attorney               |  |   |                               |
| 21 | Zoning Board Engineer/Professional Planner   |  |   |                               |
| 22 | Conflict Zoning Board Engineer               |  |   |                               |
| 23 | Financial Advisor                            |  |   |                               |

|    | <b>POSITION</b>                            | <b>Check which service(s) you are applying for</b> | <b>Total "Not to exceed" 2026 contract amount</b> | <b>Hourly Rate/ Flat Rate</b> |
|----|--|--|---|-------------------------------|
| 24 | Animal Control Services                    |  |   |                               |
| 25 | Tax Map Maintenance                        |  |   |                               |
| 26 | Storm Water GIS Mapping                    |  |   |                               |
| 27 | Potable Water & Sanitary Sewer GIS Mapping |  |   |                               |
| 28 | Grant Writer                               |  |   |                               |



**PLEASE EXECUTE THIS FORM AND SUBMIT WITH THE RFP PACKAGE**

**TOWNSHIP OF BARNEGAT  
900 WEST BAY AVENUE  
BARNEGAT, NJ 08005**

**RIGHT TO EXTEND – TIME FOR AWARD**

The Township of Barnegat is required by the Local Public Contracts Law N.J.S.A. 40A:11-24, to make an award on products or service within sixty (60) days of the bid opening date.

Should the Township of Barnegat require an additional thirty (30) days extension to make an award of this bid, by signing this document you should grant the Township of Barnegat the right to extend this award up to ninety (90) days, if deemed necessary

SIGNED: Cynthia V Norfleet  
(SIGNATURE)

TITLE: Cynthia V Norfleet, Managing Member & CEO  
(PRINTED OR TYPED)

COMPANY: Van Cleef Engineering Associates, LLC

DATED: 11 / 22 / 25

TYPE OF PRODUCT OR SERVICE OFFERED: Township & Water/Sewer Utility Pool Engineer

\_\_\_\_\_  
\_\_\_\_\_

**PLEASE EXECUTE THIS FORM AND SUBMIT WITH THE RFP PACKAGE**

**PUBLIC/STOCKHOLDER DISCLOSURE STATEMENT**

NAME OF BUSINESS: Van Cleef Engineering Associates, LLC

I certify that the list below contains the names and home addresses of all stockholders 10% or more of the issued and outstanding stock of the undersigned.

Or

I certify that no one stockholder owns 10% or more of the issued and outstanding stock of the undersigned.

- Partnership
  - Limited Partnership
  - Subchapter S Corporation
  - Corporation
- Limited Liability Company

Sign and notarize the form below, and, if necessary, complete the stockholder list below.

**STOCKHOLDERS:**

Name: Neil I Van Cleef Name: \_\_\_\_\_

Home Address: 1574 Millstone River Rd  
Hillsborough, NJ 08844 Home Address: \_\_\_\_\_

Name: Samuel D Costanzo Name: \_\_\_\_\_

Home Address: 545 E. State St  
Doylestown, PA 18901 Home Address: \_\_\_\_\_

Name: Cynthia V Norfleet Name: \_\_\_\_\_

Home Address: 1570 Millstone River Rd  
Hillsborough, NJ 08844 Home Address: \_\_\_\_\_

Subscribed and sworn before me this 21<sup>st</sup> day of  
November, 2025

Kristen M. Macholtz (Notary Public Signature)  
My Commission Expires: \_\_\_\_\_

(Affiant)  
Cynthia V Norfleet  
(Print name & title of affiant)  
Cynthia V Norfleet, Managing Member & CEO  
(Corporate Seal)

**PLEASE EXECUTE THIS FORM & SUBMIT WITH THE RFP PACKAGE**

NON-COLLUSION AFFIDAVIT

State of New Jersey

County of Somerset

I, Cynthia V Norfleet residing in Hillsborough Township in the County of  
(Name of Affiant) (Name of Municipality)

Somerset and State of New Jersey of full age, being duly sworn according to law on my oath depose and say that:

I am Managing Member & CEO of the firm of Van Cleef Engineering Associates, LLC the bidder making this Proposal  
(Title or Position) (Name of Firm)

For the bid entitled 2026 Professional Services  
(Title of Bid Proposal)

And that I executed the said proposal with full authority to do so that said bidder has not, directly or indirectly entered into any agreement, participated in any collusion, or otherwise taken any action in restraint of free, competitive bidding in connection with the above named project; and that all statements contained in said proposal and in the affidavit are true and correct, and made with full knowledge that the

Township of Barnegat relies upon the truth of the statements contained in said Proposal and

in the statements contained in this affidavit in awarding the contract for said project.

I further warrant that no person or selling agency has been employed or retained to solicit or secure such contract upon an agreement or understanding for a commission, percentage, brokerage, or contingent fee, except bona fide employees or bond fide established commercial or selling agencies maintained

By Van Cleef Engineering Associates, LLC

Subscribed and sworn to me

Before this day November 14, 2025

Cynthia V Norfleet  
(Signature)

Cynthia V Norfleet, Managing Member & CEO  
(Type or print name of affiant under signature)

Notary public of New Jersey

My commission expires: 2 / 26 / 28 (Seal)

Kristen M. Macholtz

Embossed Hereon Is My  
State Of New Jersey Notary Public Seal  
My Commission Expires February 26, 2028  
KRISTEN M. MACHOLTZ

01/31/19

Taxpayer Identification# 222-939-230/000

Dear Business Representative:

Congratulations! You are now registered with the New Jersey Division of Revenue.

Use the Taxpayer Identification Number listed above on all correspondence with the Divisions of Revenue and Taxation, as well as with the Department of Labor (if the business is subject to unemployment withholdings). Your tax returns and payments will be filed under this number, and you will be able to access information about your account by referencing it.

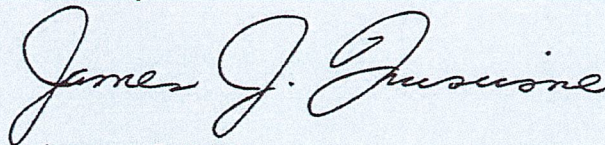
Additionally, please note that State law requires all contractors and subcontractors with Public agencies to provide proof of their registration with the Division of Revenue. The law also amended Section 92 of the Casino Control Act, which deals with the casino service industry.

We have attached a Proof of Registration Certificate for your use. To comply with the law, if you are currently under contract or entering into a contract with a State agency, you must provide a copy of the certificate to the contracting agency.

If you have any questions or require more information, feel free to call our Registration Hotline at (609)292-9292.

I wish you continued success in your business endeavors.

Sincerely,



James J. Fruscione  
Director  
New Jersey Division of Revenue

STATE OF NEW JERSEY  
BUSINESS REGISTRATION CERTIFICATE

DEPARTMENT OF TREASURY/  
DIVISION OF REVENUE  
PO BOX 252  
TRENTON, N J 08646-0252

TAXPAYER NAME:

**VAN CLEEF ENGINEERING ASSOCIATES LL**

TRADE NAME:

ADDRESS:

**32 BROWER LANE  
HILLSBOROUGH NJ 08844-1270**

SEQUENCE NUMBER:

**1491848**

EFFECTIVE DATE:

**06/08/09**

ISSUANCE DATE:

**01/31/19**



Director  
New Jersey Division of Revenue

FORM-BRC

(04-08), D205846V

This Certificate is NOT assignable or transferable. It must be conspicuously displayed at above address.

**PLEASE EXECUTE THIS FORM AND SUBMIT WITH THE RFP PACKAGE**

**N.J.S.A. 10:5-31 et seq. (P.L. 1975, C. 127) and N.J.A.C. 17:27  
MANDATORY EQUAL EMPLOYMENT OPPORTUNITY LANGUAGE  
GOODS, PROFESSIONAL SERVICE AND GENERAL SERVICE CONTRACTS**

During the performance of this contract, the contractor agrees as follows:

The contractor or subcontractor, where applicable, will not discriminate against any employee or applicant for employments because of age, race, creed, color, national origin, ancestry, marital status, affectional or sexual orientation, gender identity or expression, disability, nationality or sex. Except with respect to affectional or sexual orientation and gender identity or expression, the contract will ensure that equal employment opportunity is afforded to such applicants in recruitment and employment, and that employees are treated during employment, without regard to their age, race, creed, color, national origin, ancestry, marital status, affectional or sexual orientation, gender identity or expression, disability, nationality or sex. Such equal employment opportunity should include, but not be limited to the following: employment, upgrading, demotion, or transfer; recruitment or recruitment advertising; layoff or termination; rates of pay or other forms of compensation; and selection for training, including apprenticeship. The contractor agrees to post in conspicuous places, available to employees and applicants for employment, notices to be provided by the Public Agency Compliance Officer setting forth provisions of this nondiscrimination clause.

The contractor or subcontractor, where applicable will, in all solicitation or advertisements for employees placed by or on behalf of the contractor, state that all qualified applicants will receive consideration for employment without regard to age, race, creed, color, national origin, ancestry, marital status, affectional or sexual orientation, gender identity or expression, disability, nationality or sex.

The contractor or subcontractor, where applicable, will send to each labor union or representative of workers with which it has a collective bargaining agreement or other contract or understanding, a notice, to be provided by the agency contract officer advising the labor union or workers' representative of the contractor's commitments under this act and should post copies of the notice in conspicuous places available to employees and applicants for employment.

The contractor or subcontractor, where applicable, agrees to comply with any regulations promulgated by the Treasurer pursuant to N.J.S.A. 10:5-31 et seq., as amended and supplemented from time to time and the Americans with Disabilities Act.

The contractor or subcontractor agrees to make good faith efforts to afford equal employment opportunities to minority and women workers consistent with Good faith efforts to meet targeted county employment goals established in accordance with N.J.A.C. 17:27-5.2, or Good faith efforts to meet targeted county employment goals determined by the Division pursuant to N.J.A.C. 17:27-5.2.

The contractor or subcontractor agrees to inform in writing its appropriate recruitment agencies including, but not limited to, employment agencies, placement bureaus, colleges, universities, labor unions, that it does not discriminate on the basis of age, creed, color, national origin, ancestry, marital status, affectional or sexual orientation, gender identity or expression, disability, nationality or sex, and that it will discontinue the use of any recruitment agency which engages in direct or indirect discriminatory practices.

The contractor or subcontractor agrees to revise any of its testing procedures, if necessary, to assure that all personnel testing conforms with the principles of job-related testing, as established by the statutes and court decisions of the State of New Jersey and as established by applicable Federal law and applicable Federal court decisions.

**PLEASE EXECUTE THIS FORM AND SUBMIT WITH THE RFP PACKAGE**

**N.J.S.A. 10:5-31 ET SEQ. (P.L. 1975, C.127) AND N.J.A.C. 17:27  
MANDATORY EQUAL EMPLOYMENT OPPORTUNITY LANGUAGE  
GOODS, PROFESSIONAL SERVICE AND GENERAL SERVICE CONTRACTS  
(CONTINUED)**

In conforming with the targeted employment goals, the contractor or subcontractor agrees to review all procedures relating to transfer, upgrading, downgrading and layoff to ensure that all such actions are taken without regard to age, creed, color, national origin, ancestry, marital status, affectional or sexual orientation, gender identity or expression, disability, nationality or sex, consistent with the statutes and court decisions of the State of New Jersey, and applicable Federal law and applicable Federal court decisions.

The contractor should submit to the public agency, after notification of award but prior to execution of a goods and services contract, one of the following three documents:

Letter of Federal Affirmative Action Plan Approval

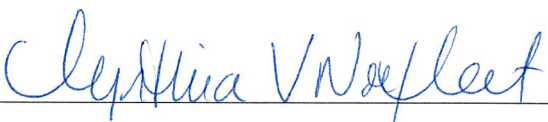
Certificate of Employee Information Report

Employee Information Report Form AA-302

The contractor and its subcontractors should furnish such reports or other documents to the Division of Public Contract Equal Employment Opportunity Compliance as may be requested by the office from time to time in order to carry out the purposes of these regulations, and public agencies should furnish such information as may be requested by the Division of Public Contracts Equal Employment Opportunity Compliance for conducting a compliance investigation pursuant to Subchapter 10 of the Administrative Code at N.J.A.C. 17:27.

Submitted by: Van Cleef Engineering Associates, LLC  
(Name of Firm)

Name: Cynthia V Norfleet  
(Please type or print)

Signature: 

Title: Managing Member & CEO

Date: 11 / 21 / 25

**PLEASE EXECUTE THIS REQUIRED FORM AND SUBMIT WITH RFP PACKAGE**

**EEO/AFFIRMATIVE ACTION COMPLIANCE NOTICE TO BIDDERS  
N.J.S.A. 10:5-31 AND N.J.A.C. 17:27  
GOODS, PROFESSIONAL SERVICE AND GENERAL SERVICE CONTRACTS**

All successful bidders are required to submit evidence of appropriate affirmative action compliance to the County Division of Public Contracts Equal Employment Opportunity Compliance. During a review, Division representatives will review the County files to determine whether the affirmative action evidence has been submitted by the vendor/contractor. Specifically, each vendor/contractor should submit to the County, prior to execution of the contract, one of the following documents:

Goods and General Service Vendors

1. Letter of Federal Approval indicating that the vendor is under an existing federally approved or sanctioned affirmative action program. A copy of the approval letter is to be provided by the vendor to the County and the Division. This approval letter is valid for one year from the date of issuance.

Do you have a federally approved or sanctioned EEO/AA program? Yes \_\_\_ No X  
If yes, please submit a photo copy of such approval.

2. A Certificate of Employee Information Report (hereafter "Certificate"), issued in accordance with N.J.A.C. 17:27-1.1 et seq. The vendor must provide a copy of the Certificate to the County as evidence of its compliance with the regulations. The Certificate represents the review and approval of the vendor's Employee Information Report, Form AA-302 by the Division. The period of validity of the Certificate is indicated on its face. Certificates must be renewed prior to their expiration date in order to remain valid.

Do you have a State Certificate of Employee Information Report Approval? Yes X No \_\_\_  
If yes, please submit a photo copy of such approval.

3. The successful vendor should complete an Initial Employee Report, Form AA-302 and submit it to the Division with \$150.00 fee and forward a copy of the Form to the County. Upon submission and review by the Division, this report should constitute evidence of compliance with the regulations. Prior to execution of the contract, EEO/AA evidence must be submitted.

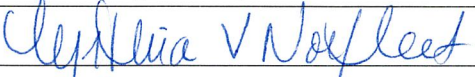
The successful vendor should complete an initial Employee Report (Form AA-302) on the Division website at [www.state.nj.us/treasury/contract](http://www.state.nj.us/treasury/contract) compliance.

The successful vendor(s) must submit the AA-302 Report to the Division of Public Contracts Equal Employment Opportunity Compliance, with a copy to Public Agency.

The undersigned vendor certifies that he/she is aware of the commitment to comply with the requirements of N.J.S.A. 10:5-31 and N.J.A.C. 17:27 and agrees to furnish the required forms of evidence.

The undersigned vendor further understands that his/her bid should be rejected as non-responsive if said contractor fails to comply with the requirements of N.J.S.A. 10:5-31 and N.J.A.C. 17:27.

Company: Van Cleef Engineering Associates, LLC

Signature: 

Print Name: Cynthia V Norfleet, Managing Member & CEO

Company: Van Cleef Engineering Associates, LLC

Date: 11 / 21 / 25

# CERTIFICATE OF EMPLOYEE INFORMATION REPORT RENEWAL

This is to certify that the contractor listed below has submitted an Employee Information Report pursuant to N.J.A.C. 17:27-1.1 et. seq. and the State Treasurer has approved said report. This approval will remain in effect for the period of ~~15-JUN-2023~~ to ~~15-JUN-2026~~

**VAN CLEEF ENGINEERING ASSOC.  
32 BROWER LANE, PO BOX 5877  
HILLSBOROUGH NJ 08844**



*Elizabeth Maher Muoio*

ELIZABETH MAHER MUOIO  
State Treasurer

# Request for Taxpayer Identification Number and Certification

Go to [www.irs.gov/FormW9](http://www.irs.gov/FormW9) for instructions and the latest information.

Give form to the  
 requester. Do not  
 send to the IRS.

**Before you begin.** For guidance related to the purpose of Form W-9, see *Purpose of Form*, below.

|  |  |
|--|--|
| Print or type.<br>See Specific Instructions on page 3. | <p><b>1</b> Name of entity/individual. An entry is required. (For a sole proprietor or disregarded entity, enter the owner's name on line 1, and enter the business/disregarded entity's name on line 2.)</p> <p><b>VAN CLEEF ENGINEERING ASSOCIATES LLC</b></p>   |
|  | <p><b>2</b> Business name/disregarded entity name, if different from above.</p>  |
|  | <p><b>3a</b> Check the appropriate box for federal tax classification of the entity/individual whose name is entered on line 1. Check only <b>one</b> of the following seven boxes.</p> <p> <input type="checkbox"/> Individual/sole proprietor            <input type="checkbox"/> C corporation            <input type="checkbox"/> S corporation            <input type="checkbox"/> Partnership            <input type="checkbox"/> Trust/estate<br/> <input checked="" type="checkbox"/> LLC. Enter the tax classification (C = C corporation, S = S corporation, P = Partnership) . . . . . <b>S</b><br/> <b>Note:</b> Check the "LLC" box above and, in the entry space, enter the appropriate code (C, S, or P) for the tax classification of the LLC, unless it is a disregarded entity. A disregarded entity should instead check the appropriate box for the tax classification of its owner.<br/> <input type="checkbox"/> Other (see instructions)       </p> |
|  | <p><b>4</b> Exemptions (codes apply only to certain entities, not individuals; see instructions on page 3):</p> <p>Exempt payee code (if any) <b>N/A</b></p> <p>Exemption from Foreign Account Tax Compliance Act (FATCA) reporting code (if any) <b>N/A</b></p> <p style="text-align: right;"><i>(Applies to accounts maintained outside the United States.)</i></p>  |
|  | <p><b>3b</b> If on line 3a you checked "Partnership" or "Trust/estate," or checked "LLC" and entered "P" as its tax classification, and you are providing this form to a partnership, trust, or estate in which you have an ownership interest, check this box if you have any foreign partners, owners, or beneficiaries. See instructions . . . . . <input type="checkbox"/></p>   |
|  | <p><b>5</b> Address (number, street, and apt. or suite no.). See instructions.</p> <p><b>32 BROWER LANE</b></p>  |
|  | <p><b>6</b> City, state, and ZIP code</p> <p><b>HILLSBOROUGH, NJ 08844</b></p>   |
|  | <p><b>7</b> List account number(s) here (optional)</p>   |
|  | <p>Requester's name and address (optional)</p>   |

**Part I Taxpayer Identification Number (TIN)**

Enter your TIN in the appropriate box. The TIN provided must match the name given on line 1 to avoid backup withholding. For individuals, this is generally your social security number (SSN). However, for a resident alien, sole proprietor, or disregarded entity, see the instructions for Part I, later. For other entities, it is your employer identification number (EIN). If you do not have a number, see *How to get a TIN*, later.

**Note:** If the account is in more than one name, see the instructions for line 1. See also *What Name and Number To Give the Requester* for guidelines on whose number to enter.

|                                       |   |   |   |   |   |   |   |   |   |
|---------------------------------------|---|---|---|---|---|---|---|---|---|
| <b>Social security number</b>         |   |   |   |   |   |   |   |   |   |
|                                       |   |   |   |   |   |   |   |   |   |
| <b>or</b>                             |   |   |   |   |   |   |   |   |   |
| <b>Employer identification number</b> |   |   |   |   |   |   |   |   |   |
| 2                                     | 2 | - | 2 | 9 | 3 | 9 | 2 | 3 | 0 |

**Part II Certification**

Under penalties of perjury, I certify that:

- The number shown on this form is my correct taxpayer identification number (or I am waiting for a number to be issued to me); and
- I am not subject to backup withholding because (a) I am exempt from backup withholding, or (b) I have not been notified by the Internal Revenue Service (IRS) that I am subject to backup withholding as a result of a failure to report all interest or dividends, or (c) the IRS has notified me that I am no longer subject to backup withholding; and
- I am a U.S. citizen or other U.S. person (defined below); and
- The FATCA code(s) entered on this form (if any) indicating that I am exempt from FATCA reporting is correct.

**Certification instructions.** You must cross out item 2 above if you have been notified by the IRS that you are currently subject to backup withholding because you have failed to report all interest and dividends on your tax return. For real estate transactions, item 2 does not apply. For mortgage interest paid, acquisition or abandonment of secured property, cancellation of debt, contributions to an individual retirement arrangement (IRA), and, generally, payments other than interest and dividends, you are not required to sign the certification, but you must provide your correct TIN. See the instructions for Part II, later.

|                  |                              |                           |
|------------------|------------------------------|---------------------------|
| <b>Sign Here</b> | Signature of U.S. person<br> | Date<br><b>01/02/2025</b> |
|------------------|------------------------------|---------------------------|

**General Instructions**

Section references are to the Internal Revenue Code unless otherwise noted.

**Future developments.** For the latest information about developments related to Form W-9 and its instructions, such as legislation enacted after they were published, go to [www.irs.gov/FormW9](http://www.irs.gov/FormW9).

**What's New**

Line 3a has been modified to clarify how a disregarded entity completes this line. An LLC that is a disregarded entity should check the appropriate box for the tax classification of its owner. Otherwise, it should check the "LLC" box and enter its appropriate tax classification.

New line 3b has been added to this form. A flow-through entity is required to complete this line to indicate that it has direct or indirect foreign partners, owners, or beneficiaries when it provides the Form W-9 to another flow-through entity in which it has an ownership interest. This change is intended to provide a flow-through entity with information regarding the status of its indirect foreign partners, owners, or beneficiaries, so that it can satisfy any applicable reporting requirements. For example, a partnership that has any indirect foreign partners may be required to complete Schedules K-2 and K-3. See the Partnership Instructions for Schedules K-2 and K-3 (Form 1065).

**Purpose of Form**

An individual or entity (Form W-9 requester) who is required to file an information return with the IRS is giving you this form because they



State Of New Jersey  
New Jersey Office of the Attorney General  
Division of Consumer Affairs



THIS IS TO CERTIFY THAT THE  
Board of Prof. Engineers & Land Surveyors

HAS CERTIFIED

VAN CLEEF ENGINEERING ASSOCIATES, LLC  
CORNELIUS VANCLEEF  
32 BROWER LANE  
Hillsborough NJ 08844-1270

FOR PRACTICE IN NEW JERSEY AS A(N): Certificate of Authorization  
Engineering & Land Surveying

Vertical watermark text: STATE OF NEW JERSEY, New Jersey Office of the Attorney General, Division of Consumer Affairs, THIS IS TO CERTIFY THAT THE Board of Prof. Engineers & Land Surveyors HAS CERTIFIED VAN CLEEF ENGINEERING ASSOCIATES, LLC Certificate of Authorization Engineering & Land Surveying, 09/23/2024 TO 08/31/2026, 24GA28132300, License/Registration/Certificate #, ACTING DIRECTOR

SIGNATURE  
*Cari Zais*  
ACTING DIRECTOR

09/23/2024 TO 08/31/2026  
VALID  
*[Signature]*  
Signature of Licensee/Registrant/Certificate Holder

24GA28132300  
LICENSE/REGISTRATION/CERTIFICATION #  
*Cari Zais*  
ACTING DIRECTOR

PLEASE DETACH HERE  
IF YOUR LICENSE/REGISTRATION/  
CERTIFICATE ID CARD IS LOST  
PLEASE NOTIFY:  
Board of Prof. Engineers & Land S  
P.O. Box 45015  
Newark, NJ 07101

PLEASE DETACH HERE

VAN CLEEF ENGINEERING ASSOCIATES, LLC  
YOUR LICENSE/REGISTRATION/CERTIFICATE NUMBER IS 24GA 28132300 . PLEASE USE IT IN ALL  
CORRESPONDENCE TO THE DIVISION OF CONSUMER AFFAIRS. USE THIS SECTION TO REPORT ADDRESS  
CHANGES. YOU ARE REQUIRED TO REPORT ANY ADDRESS CHANGES IMMEDIATELY TO THE ADDRESS NOTED  
BELOW.

Board of Prof. Engineers & Land Surveyors  
P.O. Box 45015  
Newark, NJ 07101

PRINT YOUR NEW ADDRESS OF RECORD BELOW.  
YOUR ADDRESS OF RECORD IS THE ADDRESS THAT WILL PRINT ON  
YOUR LICENSE/REGISTRATION/CERTIFICATE AND IT MAY BE MADE  
AVAILABLE TO THE PUBLIC.

HOME   
BUSINESS

\_\_\_\_\_  
\_\_\_\_\_  
\_\_\_\_\_

TELEPHONE  
INCLUDE AREA CODE

\_\_\_\_\_

PRINT YOUR NEW MAILING ADDRESS BELOW.  
YOUR MAILING ADDRESS IS THE ADDRESS THAT WILL BE USED BY  
THE DIVISION OF CONSUMER AFFAIRS TO SEND YOU ALL  
CORRESPONDENCE.

HOME   
BUSINESS

\_\_\_\_\_  
\_\_\_\_\_  
\_\_\_\_\_

TELEPHONE  
INCLUDE AREA CODE

\_\_\_\_\_

If the law governing your profession requires the current license/registration/certificate to be displayed, it should be within reasonable proximity of your original license/registration/certificate at your principal office or place of business.