

**PLEASE EXECUTE THIS FORM
AND SUBMIT AS COVER PAGE
WITH THE RFP PACKAGE**

Remington & Vernick Engineers 9 Allen Street, Toms River, NJ 08753

Company Name

Mailing address

Alan B. Dittenhofer, PE, PP, CME

Alan.Dittenhofer@rve.com

732-286-9220

Primary contact

Email

Telephone

www.rve.com

Website

	POSITION	Check which service(s) you are applying for	Total "Not to exceed" 2026 contract amount	Hourly Rate/ Flat Rate
1	Township Attorney/Labor Counsel			
2	Conflict Township Attorney/Labor Counsel			
3	Water/Sewer Attorney			
4	Conflict Water/Sewer Attorney			
5	Township and Water/Sewer Utility Pool Engineer	✓		\$220
6	Township Planner			
7	Township Auditor (Includes Water/Sewer Utility)			
8	Affordable Housing Administrative Agent			
9	Township Bond Counsel			

	POSITION	Check which service(s) you are applying for	Total "Not to exceed" 2026 contract amount	Hourly Rate/ Flat Rate
10	Township Appraiser			
11	Prosecutor			
12	Conflict Prosecutor			
13	Public Defender			
14	Conflict Public Defender			
15	Planning Board Attorney			
16	Conflict Planning Board Attorney			
17	Planning Board Engineer/Professional Planner			
18	Conflict Planning Board Engineer			
19	Zoning Board Attorney			
20	Conflict Zoning Board Attorney			
21	Zoning Board Engineer/Professional Planner			
22	Conflict Zoning Board Engineer			
23	Financial Advisor			

	POSITION	Check which service(s) you are applying for	Total "Not to exceed" 2026 contract amount	Hourly Rate/ Flat Rate
24	Animal Control Services			
25	Tax Map Maintenance			
26	Storm Water GIS Mapping			
27	Potable Water & Sanitary Sewer GIS Mapping			
28	Grant Writer			

2026 SCHEDULE OF BILLABLE HOURLY RATES

It has always been the firm's policy to encourage clients to contact our staff with questions or problems that need to be discussed. No fees are incurred each time the telephone is answered or a meeting is held on-site. Clients are free to discuss various projects without fear of incurring a consulting expense. Fees are all project-related, established at the initiation of the project or as the scope of the project can be defined. Prior to client authorization, a detailed proposal, including a scope of services, will be prepared for all Capital Projects. All proposals are subject to negotiation and approval.

ENGINEERING

Certified Floodplain Manager	\$210
Project Manager, LSRP	\$225
Project Manager/Engineer	\$220
Project Engineer	\$210
Engineer	\$190
Senior Engineering Technician	\$175
Engineering Technician	\$150
Technical Aide	\$90

PLANNING

Planning Manager	\$215
Project Planner	\$205
Senior Landscape Architect/Planner	\$200
Landscape Architect/Planner	\$175

Principal	\$230
Regional Engineer/Manager	\$225
Engineering Department Head	\$220
Administrative Manager	\$140

CONSTRUCTION MANAGEMENT & OBSERVATION

CM & Observation Department Head	\$200
----------------------------------	-------

Construction Management Personnel

Project Manager	\$190
Senior Construction Manager	\$175
Construction Manager	\$165
Asst Construction Manager	\$135

Observer Personnel

Observer Supervisor	\$185
Resident Observer NICET IV	\$185
Observer NICET II/III	\$170
Observer	\$165
Contract Administrator	\$160
NACE Certified Coating Inspector	\$195

SURVEY, CAD & GIS

Field Personnel

Surveyor	\$155
Party Chief	\$150
Transit/Rod Person	\$145
Robotic Crew	\$200
Drone Crew	\$205

Office Personnel

Survey/CAD Department Head	\$205
Survey Manager	\$200
CAD/GIS Manager	\$200
Senior CAD/GIS Technician	\$170
CAD/GIS Technician	\$150

Engineer of Record Meeting Attendance - \$250 each

(This excludes land use board or commission meeting attendance and project specific meetings which fall under standard hourly rates)

Mileage Commensurate in accordance with IRS Regulations

November 14, 2025

Donna M. Manno, RMC, Municipal Clerk
Township of Barnegat
900 West Bay Avenue
Barnegat, NJ 08005

Re: 2026 Professional Services – Water/Sewer Utility Pool Engineer

Dear Ms. Manno:

Remington & Vernick Engineers (RVE) is pleased to submit our proposal to serve as Water/Sewer Utility Pool Engineer for the Township of Barnegat. This response has been prepared in accordance with the requirements set forth in the Request for Proposals (RFP) due November 21, 2025.

Our support of utility clients includes design, planning and construction services for infrastructure/capital improvements; environmental remediation; utilities collection; treatment and design; government and public facility additions and renovations; park and recreation improvements; redevelopment and master planning projects. We have experience serving all facets of municipal engineering and planning for urban and rural communities, large and small, with an emphasis on understanding the community's needs and vision.

RVE offers the Township the following advantages:

- A full-service engineering consulting firm with the depth of technical staff to provide services as needed, with the ability to work on multiple projects simultaneously.
- A dedicated project team, including Pamela Hilla, PE, CME, CFM as Client Representative again this year
- Services will be provided from our office in Toms River, NJ with engineering support provided by RVE's office located in Cherry Hill, NJ.

We look forward to the opportunity to serve the Township of Barnegat under this contract. Should you have any questions or require additional information, please contact Alan Dittenhofer, PE, PP, CME, Executive Vice President, in our Toms River office at 732-286-9220 ext. 1602 or via email at Alan.Dittenhofer@rve.com.

Sincerely,



Leonard A. Faiola, PE, PP, CME
President & CEO

Table of Contents

Section 1	Statement of Qualifications
Section 2	Resumes of Key Staff
Section 3	Municipal Experience
Section 4	Client References
Section 5	Required Documentation



REMINGTON
& VERNICK
ENGINEERS

Statement of Qualifications

Section 1



Remington & Vernick Engineers (RVE) is one of the oldest established consulting firms in the country and has successfully completed tens of thousands of planning, engineering and capital infrastructure improvement projects. Our more than 500 employees are located in a network of multiple offices throughout the Middle and South Atlantic regions of the United States. We provide multidisciplinary engineering services for diverse public sector clients.

Our employees bring expertise, specialized certification and licensure in the major areas of engineering and the related disciplines required to implement projects in our four markets: Municipal, Transportation and Infrastructure, Facilities and Water/Wastewater. The firm is committed to ongoing staff development and we continue evaluating new approaches and technology to ensure we respond to the challenges of the marketplace and our clients. We develop client relationships to solve challenges while maintaining our focus on quality of service.

Office Locations

RVE’s headquarters are in Cherry Hill, NJ and we operate 14 additional offices. These include New Jersey offices in Marlboro Township, Egg Harbor Township, Secaucus, Toms River and Wildwood. We also have offices in Lehigh Valley, King of Prussia, Ardmore, Yardley and Pittsburgh, PA; Laurel, MD; Newark, DE and Durham and Asheville, NC.

Corporate Management

RVE, a Subchapter S Corporation, was incorporated in New Jersey on April 23, 1951. The firm has changed names several times since its 1901 founding by J.C. Remington and has operated under its present name since 1984. From 2003 to 2017, the firm’s regional offices operated as affiliate firms: Remington, Vernick & Beach; Remington, Vernick & Arango; Remington, Vernick & Vena; and Remington, Vernick & Walberg Engineers. In 2018, these affiliates were consolidated under Remington & Vernick Engineers II, Inc. and now do business as RVE.

Craig Remington, PLS, PP—grandson of J.C. Remington—and Edward Vernick, PE, CME led the firm as Vice President and President/CEO, respectively, for several decades until 2020 when leadership transitioned to Leonard A. Faiola, PE, PP, CME as President/CEO and Annina Spletzer, PE, RA, CME, LEED-AP as Executive Vice President/COO.

Corporate Executive Management			
Name	Title	Areas of Responsibility	Office(s)
Leonard A. Faiola, PE, PP, CME	President	CEO	Cherry Hill, NJ
Annina Spletzer, PE, RA, CME, LEED-AP	Executive Vice President	COO	Cherry Hill, NJ
Edward F. Brennan, Esq	General Counsel	Corporate Secretary	Cherry Hill, NJ
K. Wendell Bibbs, PE, CME	Executive Vice President	Municipal Services	Cherry Hill, NJ
Alan Dittenhofer, PE, PP, CME	Executive Vice President		Toms River, NJ
Christopher Fazio, PE, CME	Executive Vice President	Pennsylvania, Delaware, DMV	King of Prussia, PA Yardley, PA Laurel, MD Newark, DE
John M. Pyne, PE, CME	Executive Vice President	Corporate Development, Transportation, South Atlantic	Cherry Hill, NJ Durham and Asheville, NC
Terence Vogt, PE, PP, CME	Executive Vice President		Marlboro Township, NJ

1. Statement of Qualifications

Dennis K. Yoder, PE, CME, LEED-AP	Executive Vice President	Facilities	Cherry Hill, NJ
Paul D. Cray, PE, PP, CME	Executive Vice President	North Jersey Division	Marlboro Township and Secaucus, NJ
Stephanie Cuthbert, PE, CME	Executive Vice President	Water/Wastewater Division	Cherry Hill, NJ
Edward Dennis, Jr., PE, PP, CME	Executive Vice President	Shore Division	Egg Harbor Township, Toms River and Wildwood, NJ
Michael G. Meyer, PE	Principal	Regional Manager, Western Pennsylvania	Pittsburgh, PA
Vanessa Nedrick, PE, MSEM	Principal	Regional Manager, Water/Wastewater	Lehigh Valley, PA Cherry Hill, NJ

Utility Representation and Management

Clean, potable water and reliable wastewater treatment are more than modern conveniences; they are critical to human health. RVE has been a leader in this challenging market since our founding, and water and wastewater improvements form a significant portion of our project portfolio. Our engineers have received national and regional recognition for projects, innovative designs and contributions to the industry—all in order to provide our clients with cost-effective, efficient water and wastewater solutions. RVE has pioneered in the creation of successful pilot studies enabling the development of progressive solutions to address emerging unregulated contaminants.

Our team members are active in leading water and wastewater associations and often present on technical topics. We stay ahead of existing and emerging federal and state water regulations and we tailor an approach for clients to achieve and maintain compliance with existing and new requirements as they are promulgated. RVE is at the forefront of water treatment and has designed and improved treatment plants for contaminants including PFNA, PFOA and PFOS, and we recently planned and designed the first plant in New Jersey to treat 1,4-Dioxane. Our professionals develop critical public utility projects for more than 100 regional utilities authorities, county and municipal utility authorities and departments and private utility purveyors throughout the Middle and South Atlantic regions.

RVE proposes the services of **Alan Dittenhofer, PE, PP, CME**, as Principal in Charge.



Alan B. Dittenhofer
 PE, PP, CME
 Executive Vice President

Alan Dittenhofer is an Executive Vice President, focused on delivering excellent services to clients in Ocean, Monmouth and Middlesex Counties. A University of New Mexico graduate with a bachelor’s degree in mechanical engineering, Alan joined RVE in 1987. His experience includes serving as Regional Manager for the firm’s Toms River, NJ office. In his more than three decades with the firm, he has designed, managed, and contributed to thousands of capital improvement projects including building systems; sanitary sewerage collection, treatment, and pumping facilities; and utility and roadway infrastructure improvements. He is a registered professional engineer in New Jersey and Pennsylvania, and a professional planner and certified municipal engineer in New Jersey.

To support Mr. Dittenhofer, RVE proposes the services of **Pamela Hilla, PE, CME, CFM**, to serve as Client Representative. Ms. Hilla has more than 20 years of civil/site and utility design engineering experience. She assists municipalities with floodplain reviews and mitigation, as well as community rating systems and ordinance development.

Corporate Staff

RVE continues evolving to meet the challenges of technology, the marketplace and our clients. What has not changed is our focus on service. Our staff delivers attentive, responsive, professional services and applies their knowledge, creativity and commitment to meet the varied and complex needs of our municipal clients. Today we employ more than 500 professionals specializing in all major facets of municipal consulting. Below is an overview of the staff available to meet your engineering needs as municipal consultant.

Professional Staff Summary

Municipal		Water/Wastewater	
60	Professional Engineers	54	Water/Wastewater Engineers
33	Certified Municipal Engineers	22	Licensed Operators
12	Professional Planners	6	Renewable Energy Specialists
7	Certified Floodplain Managers	5	System Modelers
2	Landscape Architects	3	Air Permitting Specialists
9	Construction Managers	1	Water Utility Specialist
54	Construction Inspectors	1	NASSCO PACP Certified
4	Construction Code Officials		
Infrastructure/Transportation		Facilities	
3	Civil/Site Engineers	2	Architects
4	Highway/Roadway Engineers	12	Mechanical/Plumbing/Fire Protection Engineers
3	H&H Modelers	4	Electrical Engineers
2	Bridge Engineers	2	Certified Energy Auditors
1	Professional Traffic Operations Engineers (PTOE)	7	LEED Accredited Professional
1	Professional Transportation Planner (PTP)	3	Structural Engineers
3	NBIS Bridge Inspectors	2	Geotechnical/Soils Engineers
37	NICET Certified Inspectors		
3	NACE Certified Inspectors		

Specialized/Additional Staff			
3	Licensed Site Remediation Professionals (LSRP)	2	Land Surveyors
4	Environmental Scientists/Geologists	12	Survey Crew Members
4	Wetland Delineation Certified	16	CAD Technicians
31	Senior Engineering Technicians	2	GIS Professionals (GISP)
66	Engineering Technicians	7	GIS Analyst/Technicians
9	Technical Aides	2	FAA Certified Remote Pilots
2	Grant Coordinators	1	Professional Geologist

Ability to Provide Services

Key proposed personnel will be available to the client when their specific skills and experience are needed. RVE will review project schedules for feasibility, duration, milestones and interfaces. Schedule development and maintenance services are determined using Microsoft and Deltek scheduling software. These programs enable RVE to track the critical path of a specified project and to monitor potential delays. We also analyze change orders and any projected impact associated with each delay to ensure the project is proceeding according to schedule.

Resumes of Key Personnel

Resumes detailing the education, professional credentials and recent experience are provided in [Section 2](#).

Water/Wastewater Service Capabilities

Water Distribution

RVE combines deep engineering expertise with advanced in-house modeling tools to deliver smarter and more reliable water distribution solutions. Our team leverages cutting-edge computer simulations to evaluate supply, distribution, pressure, water quality and water age scenarios to ensure optimal performance for everything from everyday domestic demand to critical fire-fighting capacity. Beyond system modeling, RVE brings proven experience in the design of pump stations, whether underground, in-line, or above-grade, complete with state-of-the-art controls and telemetry. The result is tailored, data-driven infrastructure that meets today’s challenges and tomorrow’s growth.

Water System Models—RVE’s engineering team specializes in developing, calibrating and applying hydraulic models using industry-leading software such as WaterGEMS, InfoWater and other advanced platforms. We build detailed distribution system models using Geographic Information Systems (GIS) data, hydrant flow tests, Supervisory Control and Data Acquisition (SCADA) records, pump operating data and field measurements, then rigorously calibrate them to match real-world conditions. Our expertise extends beyond standard hydraulic modeling; we perform surge (transient) analysis to evaluate the effects of pump starts, stops and emergency shutdowns on system pressures to protect against water hammer and pipe damage. In addition, we conduct water quality analyses within the models to evaluate chlorine residuals, system age and potential water quality degradation, ensuring safe and reliable service delivery.

Once calibrated, these models serve as powerful planning and design tools. RVE runs multiple system scenarios including normal operations, peak demand, fire-flow conditions, emergency outages, surge events and long-term growth projections to pinpoint constraints and guide cost-effective capital improvements. By modeling upgrades such as pump station improvements, tank storage strategies, pressure zone adjustments and water quality optimization measures, RVE provides clients with data-driven solutions that enhance reliability, protect infrastructure and safeguard public health.

Flow and Pressure Testing—RVE provides expert hydrant flow and pressure testing to accurately evaluate water system performance. These tests are essential for fire sprinkler design and for developing and calibrating water distribution models.

Our team conducts tests by strategically using three hydrants within the system. A pressure gauge is placed on one hydrant to record the static pressure, while the other two hydrants are fully opened to simulate maximum demand. Using a calibrated pitot gauge, we measure residual pressure as water is discharged, allowing us to calculate the pressure drop and available flow under real-world conditions.

This process gives municipalities, utilities and developers reliable data on system capacity, identifies potential limitations and ensures that both fire protection and everyday water supply needs are met with confidence.

Water Distribution Design and Permitting—RVE has extensive experience designing water distribution piping networks ranging from small, single-zone pressure systems to large, complex multi-zone systems. For smaller systems, we focus on optimizing pipe layouts, hydraulic gradients and material selection to provide reliable supply, maintain adequate pressures and ensure compliance with state and federal standards. These designs balance cost-effectiveness with long-term performance, addressing domestic demand, fire-flow requirements and system resiliency in a straightforward and efficient manner.

For larger, more complex systems, RVE applies advanced hydraulic modeling and design strategies to manage multiple pressure zones and ensure seamless operation across diverse service areas. Our designs integrate pressure reducing valves (PRVs), pump stations and storage facilities to maintain balance between zones, prevent over-pressurization and protect system integrity. By leveraging tools such as WaterGEMS and other modeling software, we evaluate a full range of scenarios such as normal operation, fire demand, surge events and system growth, resulting in reliable, resilient distribution networks tailored to each client's needs.

Our water distribution system designs are developed with a strong focus on constructability and community impact. Our engineers carefully coordinate with existing utilities to avoid conflicts and design replacement projects that maintain uninterrupted service while new infrastructure is installed. We plan tie-ins and connections to the active system with precision, ensuring reliability throughout construction. Phasing strategies are incorporated to minimize disruption to residents, businesses and traffic, while also protecting the integrity of the operating distribution system. This comprehensive approach allows our clients to achieve critical infrastructure improvements with minimal inconvenience to the communities they serve.

Water Pumping Station Improvements—RVE helps clients plan and implement pumping station upgrades that are both technically sound and future-ready. Our engineers evaluate hydraulic gradients and pressure zones to ensure stations are designed for balanced, efficient distribution across the entire system. Whether it's increasing pumping capacity, installing modern equipment, or upgrading motor control centers (MCCs) and SCADA, our team delivers solutions that improve reliability and optimize performance.

Our experience spans rehabilitating existing stations and designing new facilities of all sizes. Beyond the engineering, we provide thoughtful landscape design to screen above-ground structures, creating facilities that fit seamlessly into their surroundings. We also navigate the full spectrum of permitting requirements, including New Jersey Department of Environmental Protection (NJDEP) Treatment Works Approval (TWA), Land Use and Air Permitting, as well as local planning and zoning board approvals. RVE's staff frequently represent clients at board meetings, ensuring projects gain the necessary approvals and move forward without delay.

Water tower/tank inspections, rehabilitation and painting—RVE provides full-service engineering support for the inspection, rehabilitation, repair, repainting and ongoing maintenance of water storage tanks and towers. Our in-house coating specialists are trained and certified for tower climbing, enabling hands-on structural and coating condition assessments during the planning and design phases. Unlike firms that evaluate tanks in isolation, RVE

takes a programmatic approach by assessing the storage facility as part of the broader water supply and distribution system. This ensures that considerations such as hydraulic performance, system pressures, operational security, water quality compliance and life-cycle cost are fully integrated into our recommendations. Our depth of experience allows us to deliver practical, technically sound designs that balance regulatory requirements, operational reliability and long-term asset management goals.

To complement traditional inspection methods, RVE employs advanced drone technology as a cost-effective and safer alternative for evaluating tanks and towers up to 150 feet in height. Our FAA-licensed Part 107 Remote Pilot captures high-resolution photo and video documentation, minimizing the risks and costs associated with manual inspections while providing comprehensive visual coverage and creating a permanent digital inspection record. When tank recoating is required, our National Association of Corrosion Control (NACE) Certified Coating Inspectors oversee the process to ensure full compliance with project specifications and industry standards. This includes careful monitoring of surface preparation and removal techniques, coating type selection, film thickness, application methods and environmental conditions such as temperature, humidity and curing time, resulting in durable, long-lasting protective coatings that preserve both structural integrity and water quality.

When code compliance upgrades are necessary, which is typical for older tanks, our trained engineers make the necessary recommendations for upgrades which are protective of human health but also worker safety improvements.

New Elevated Water Storage Tanks or Ground Storage Tanks—RVE provides comprehensive engineering design services for both ground storage and elevated water storage tanks, ensuring that each facility is seamlessly integrated into the client’s overall distribution system. Our designs begin with a detailed system analysis to evaluate storage requirements, hydraulic gradients, fire flow demands and operational objectives. By modeling the impacts of new or rehabilitated tanks on system pressures, flows and water quality, we ensure that each storage improvement enhances reliability without introducing adverse conditions such as over-pressurization or stagnant zones. We also consider the long-term operational needs of the utility, incorporating redundancy, future growth and maintenance requirements into the design process.

In addition to system integration, RVE designs address the structural and operational components critical to tank performance. Our engineers evaluate geotechnical conditions to develop appropriate foundation designs, whether for ground-level or elevated storage structures. We also integrate modern control systems, including SCADA and level monitoring, to optimize tank operation and coordination with pump stations. Redundancy measures, such as dual inlet/outlet piping and bypass configurations, are incorporated to maintain system reliability during maintenance or emergency conditions. From foundations to controls, our designs balance structural integrity, operational efficiency and system resiliency, providing clients with storage facilities that support both immediate needs and long-term sustainability.

Water Reservoir Inspection, Rehabilitation and Design—RVE provides comprehensive inspection and rehabilitation design services for potable water reservoirs, including in-ground, partially buried and above-ground storage facilities. Our inspection process includes structural evaluations of concrete or steel tank walls, roofing systems, inlet/outlet piping, overflow structures, internal baffling and access points. We assess coating conditions, evidence of corrosion or leakage, sediment accumulation and biological growth. For covered reservoirs, we evaluate roof integrity, watertightness, venting systems, hatches and the overall ability to prevent contamination. All inspections are conducted in accordance with American Water Works Association (AWWA) standards (i.e., D110, D115, D120) and applicable state drinking water regulations. When deficiencies are identified, RVE develops rehabilitation designs that may include structural repairs, re-coating systems, roof replacement or refurbishment, disinfection system upgrades and improvements to security and access control. Designs also address regulatory requirements for reservoir covers, such as impermeable floating or fixed covers compliant with the Environmental

Protection Agency's (EPA) Surface Water Treatment Rule (SWTR) and state mandates regarding open finished water storage. We coordinate closely with health departments to secure required approvals and permitting, including submittal of engineering reports, reservoir rehabilitation plans and schedule coordination to minimize service disruption. Our reservoir rehabilitation projects restore system integrity, extend useful life and ensure continued compliance with public health and environmental standards.

Wastewater Collection

At RVE, we deliver end-to-end expertise in wastewater collection systems from initial planning through to funding and implementation. We design both new sanitary sewer systems and rehabilitation projects using open-cut and trenchless methods, helping clients modernize infrastructure while minimizing disruption.

Our team specializes in the design and hydraulic modeling of pump stations, force mains and related infrastructure to ensure reliable and efficient system performance. We tailor each solution to the specific demands of your service area, optimizing capacity, flow and long-term maintainability.

Flow Metering and Piping Capacity Studies—Federal and state regulatory agencies continue to tighten requirements for the management of sanitary sewer collection systems, with a clear focus on reducing the frequency and volume of untreated sewage discharges into the environment. In response, utilities must have a detailed understanding of both dry and wet weather system performance, including seasonal variations in flow and capacity constraints.

RVE conducts flow metering and piping capacity studies to deliver accurate, real-world data on how collection systems function under varying conditions. By installing temporary or permanent flow meters at strategic locations, we collect continuous data on flow rates, depth and velocity over extended monitoring periods. This information allows us to identify inflow and infiltration (I&I) issues, peak flow patterns and potential surcharging within the network. Using this data, we calibrate hydraulic models to simulate wet weather conditions and evaluate system behavior during storm events. These models help predict future bottlenecks, assess capacity limitations and support the planning of targeted infrastructure improvements.

RVE collaborates closely with utility clients to define flow monitoring zones, select monitoring equipment and determine optimal data collection intervals. Our studies support regulatory compliance, long-term system planning and capital improvement prioritization ensuring infrastructure meets both current performance standards and future demands

I&I Studies—RVE performs detailed flow metering and I&I analyses to evaluate the performance of sanitary sewer systems at the subbasin level. Using flow monitoring data collected during both dry and wet weather conditions, we develop accurate dry weather base flow baselines and calculate inflow and infiltration volumes for each monitored subbasin. These analyses allow for clear comparisons between expected and actual flow patterns, enabling rapid identification of subbasins with excessive I&I or unusual flow behavior. Our reports include detailed charts, flow hydrographs and GIS-based mapping to illustrate problem areas and quantify deficiencies.

Each report includes targeted remediation recommendations based on the specific conditions identified, such as trenchless rehabilitation (i.e., cured in place piping (CIPP) lining, joint sealing), manhole restoration, illegal connection investigations and, where necessary, open-cut replacement. These recommendations are prioritized by severity, impact and cost-effectiveness, giving clients a clear, actionable plan to reduce I&I, restore system capacity and minimize the risk of overflows and regulatory violations.

Collection System Design and Permitting—RVE specializes in the detailed design and permitting of sanitary gravity sewer systems, supporting both new developments and system expansions for municipal and private clients. Our engineers design gravity sewer networks that efficiently convey wastewater using precise slope calculations,

optimal pipe diameters and material selection based on flow characteristics, soil conditions and long-term durability. We analyze contributing flow rates using population equivalents, zoning data and projected build-out to size mains appropriately for both current and future demand.

Design considerations include manhole spacing and configuration, pipe bedding, trench details, minimum and maximum velocities and protection from infiltration, root intrusion and corrosion. Where deep cuts, utility crossings, or high groundwater are present, we incorporate trenchless technologies such as pipe jacking or directional drilling. We also design special structures such as drop manholes, flow splitters and junction chambers where necessary to manage elevation changes and flow transitions within the system.

RVE navigates the full permitting process at the local, state and federal levels, preparing and submitting sewer extension applications, treatment capacity verification requests and environmental impact documentation as required. We coordinate with regulatory agencies such as state DEPs and local sewer authorities to ensure designs comply with applicable standards, including peak flow criteria, minimum cover requirements and materials specifications.

For construction-phase implementation, we provide detailed construction documents, including plan and profile sheets, standard details and specifications. We also support bidding, contractor coordination and permit close-out documentation. Our approach ensures gravity sewer systems are designed for regulatory compliance, long-term reliability and ease of maintenance, while minimizing construction complexity and community disruption.

Sanitary Pump Station and Force Main Evaluations and Design—RVE conducts comprehensive investigations of existing sanitary pump stations to assess condition, performance and compliance with current design standards and capacity requirements. Evaluations include a detailed review of pump curves, flow monitoring data, SCADA system logs, wet well cycling, force main hydraulics and electrical/control systems. Field inspections focus on structural integrity, corrosion, equipment wear, sump volume and I&I effects. Based on these findings, we determine whether rehabilitation or full replacement offers the most cost-effective and operationally sound solution. For upgrades, we often redesign pump configurations, replace aged or undersized pumps, improve control panels with modern programmable logic controllers (PLCs) or variable frequency drives (VFDs) and integrate level controls with telemetry systems for remote monitoring and alarm capabilities.

For new or replacement pump stations, RVE provides full design services including hydraulic analysis of wet well sizing, pump selection (duty/standby configuration), force main sizing, surge analysis and energy efficiency modeling. Our designs address redundancy (typically in accordance with Ten States Standards or equivalent local criteria), emergency storage, ventilation, odor control and back-up power systems, whether via generator or quick-connect bypass. We develop detailed site layouts, plan and profile drawings, structural designs (including wet wells, valve vaults and control buildings) and erosion/sediment control plans. Permitting includes preparation of sewer extension or modification applications, coordination with state environmental agencies, local utilities and floodplain or wetlands permitting when applicable. RVE also supports bidding, construction oversight and startup/testing to ensure compliance with permit conditions, design intent and operational readiness.

Combined Sewer Separation Studies, Design and Permitting—Combined sewer systems (CSSs) are legacy infrastructure designed to convey stormwater runoff, domestic sewage and industrial wastewater through a single piping network to centralized treatment facilities. Under normal flow conditions, all influents are directed to a wastewater treatment plant. However, during periods of significant precipitation or snowmelt, hydraulic loading can exceed the design capacity of both the collection system and the treatment plant. To prevent system backup and localized flooding, CSSs were engineered with combined sewer overflow (CSO) outfalls, which discharge excess untreated flow directly to receiving waters such as rivers, streams and estuaries. CSO discharges typically contain a mixture of stormwater and untreated sanitary flow, including pathogens, nutrients, suspended solids, floatables, industrial pollutants and debris, posing a significant risk to public health and water quality.

RVE performs detailed investigations of existing combined systems by collecting and analyzing system data, including pipe alignments, inverts, diameters, slopes, materials and connection points at manholes, inlets and catch basins. Using this data, we develop hydrologic and hydraulic models to evaluate system performance during design storm events and identify capacity limitations and overflow triggers. Our engineering designs for CSO mitigation and system separation are guided by the EPA's CSO Control Policy, aligning with Clean Water Act (CWA) compliance requirements. We prepare and implement Long-Term Control Plans that integrate both gray infrastructure solutions such as parallel storm sewers, storage tanks and regulator modifications and green infrastructure strategies, including bioswales, permeable pavements and green roofs. These designs aim to reduce the frequency, volume and pollutant loading of CSOs while enhancing system resilience and optimizing cost-effectiveness.

CCTV Studies and NASSCO Analysis—RVE provides comprehensive condition assessments of sanitary sewer mains and manholes using closed-circuit television (CCTV) inspection in accordance with National Association of Sewer Service Companies (NASSCO) Pipeline Assessment Certification Program (PACP) and Manhole Assessment Certification Program (MACP) standards. Our in-house staff, fully certified by NASSCO, conduct the review and analysis of inspection footage to ensure consistent, industry-standard defect coding, prioritization and documentation. This enables accurate comparison across assets and repeatable condition grading over time.

During the review process, we evaluate key structural and operational elements such as joint offsets, root intrusion, infiltration, deformation, debris accumulation, fractures and cross-bores. We assign a PACP Quick Rating and Overall Condition Grade for each main segment, identifying those with immediate maintenance needs or requiring capital improvements. For manholes, our MACP-trained staff assess structural conditions (i.e., corrosion, wall deterioration, frame integrity), infiltration points, bench/channel integrity and access limitations. Each defect is logged using standardized severity levels and findings are integrated into GIS-based asset maps and rehabilitation planning tools.

Following analysis, RVE develops targeted rehabilitation and improvement recommendations tailored to defect type, severity and overall system risk. These may include trenchless methods such as CIPP lining, point repairs, chemical grouting, manhole coating systems, frame and cover replacements, or complete dig-and-replace solutions for severely compromised segments. Recommendations are ranked by urgency, allowing clients to prioritize capital planning and align improvements with budget cycles and regulatory requirements. Our deliverables include detailed condition reports, PACP/MACP databases, GIS shapefiles and video logs to support documentation, funding applications and compliance tracking.

By using certified staff and standardized assessment protocols, RVE ensures high-quality data interpretation, defensible rehabilitation planning and long-term asset management strategies for our municipal and regional utility clients.

Water/Wastewater Treatment Facilities

RVE delivers advanced wastewater treatment solutions through the application of proven engineering principles and forward-thinking design. Our team has consistently led the implementation of innovative treatment technologies, earning recognition for being the first in the state to successfully design and bring online several systems that address evolving regulatory, environmental and operational challenges. Our designs include more common novel applications of enhanced nutrient removal (ENR) processes, membrane bioreactors (MBRs) and integrated fixed-film activated sludge (IFAS) systems, as well as chemical and biological phosphorus removal and high-efficiency disinfection alternatives.

Our approach begins with a thorough evaluation of influent characteristics, loading trends and effluent permit requirements, followed by process modeling, pilot testing where appropriate and the development of custom

process configurations tailored to site constraints and operational goals. RVE's designs integrate emerging technologies with conventional treatment frameworks to improve contaminant removal, reduce energy demand and lower sludge production. Our designs also emphasize flexibility and scalability, allowing facilities to adapt to future regulatory requirements or population growth without extensive retrofitting.

Through close collaboration with regulatory agencies and our clients, we have guided the successful permitting, design and startup of systems that now serve as benchmark installations for other municipalities across the state. RVE continues to push the envelope in treatment technology, offering clients access to cutting-edge, compliant and cost-effective solutions that align with long-term infrastructure planning and environmental stewardship.

New and Rehabilitated Water Treatment Facilities—Analysis, Upgrades, Rehabilitations and Expansions—RVE provides advanced engineering solutions for the planning, design and upgrade of municipal and regional water treatment facilities, with a focus on meeting increasingly stringent Federal and State drinking water regulations. Our work spans the treatment of conventional contaminants such as iron and manganese, as well as naturally occurring radionuclides (i.e., radium-226 and radium-228) and emerging contaminants including per- and polyfluoroalkyl substances (PFAS) and 1,4-Dioxane. We apply detailed source water quality characterization, bench- and pilot-scale treatability testing and treatment process modeling to identify and design the most effective and sustainable technologies for each specific application.

Our treatment plant designs incorporate advanced technologies such as pressure and gravity filtration, aeration and oxidation processes for iron and manganese removal, ion exchange, selective resin adsorption, granular activated carbon (GAC), advanced oxidation processes (AOP) and high-pressure membrane systems for PFAS and 1,4-Dioxane mitigation. We emphasize process redundancy, system scalability and operational resilience in our layouts ensuring that each facility is built not only for current compliance but also future regulatory adaptation. Our electrical, instrumentation and control designs include full SCADA and telemetry integration for real-time monitoring, remote access and data-driven decision-making across treatment and distribution assets.

To maintain long-term functionality, RVE provides comprehensive capital improvement planning (CIP) for water treatment infrastructure. These plans include lifecycle replacement of treatment equipment, corrosion-resistant piping and valves, energy-efficient pumping systems, non-chemical disinfection alternatives (i.e., UV) and climate-resilient facility design with odor control and buffer zone considerations. We also assist with state permitting, funding acquisition and public engagement to ensure regulatory compliance and community alignment.

Our innovative work in water treatment has been recognized with state and regional engineering excellence awards, honoring both our technical leadership and commitment to environmental stewardship. RVE remains at the forefront of water treatment engineering by continuously advancing solutions that protect public health, preserve water resources and promote sustainable utility operations.

New and Rehabilitated Wastewater Treatment Facilities—Analysis, Upgrades, Rehabilitations and Expansions—RVE delivers a full spectrum of engineering services for wastewater treatment facilities, from initial condition assessments and performance evaluations to the design of rehabilitation, expansion and completely new facilities. Our team of civil, mechanical, environmental and process engineers leverage advanced analytical tools and regulatory expertise to support municipal and industrial clients in achieving reliable, efficient and compliant wastewater management.

We begin with asset assessments that evaluate the structural, mechanical, electrical and process integrity of existing treatment facilities. These assessments include equipment life-cycle analysis, condition scoring, capacity utilization, operational reliability and regulatory compliance. Using field inspections, operational data and SCADA trend analysis, we identify critical deficiencies, process bottlenecks and risk exposure. Each assessment culminates in a prioritized set of recommendations for capital improvement planning, emergency response and long-term operational resilience.

RVE's capabilities extend to the planning and design of upgrades, retrofits, or complete replacement of treatment infrastructure. This includes hydraulic analysis of plant headworks, clarifiers, aeration basins and solids handling systems, as well as wet weather flow management strategies. Using BioWin process modeling, we simulate biological and chemical treatment performance under various loading, temperature and operational conditions to optimize treatment configurations. BioWin allows us to evaluate aeration requirements, sludge age, nutrient removal efficiencies (nitrogen and phosphorus) and chemical dosing strategies enabling data-driven decision-making for ENR or BNR systems and other advanced treatment processes.

Our services also include modeling of plant influent and effluent systems, including equalization basins, flow splitters and outfall structures. For facilities discharging to surface waters, we conduct stream assimilative capacity studies and Cornell Mixing Zone Expert System (CORMIX) mixing zone modeling to evaluate effluent dispersion, thermal impacts and regulatory compliance with water quality standards under various flow regimes. This is critical for supporting National Pollutant Discharge Elimination System (NPDES) permit applications, anti-degradation reviews and site-specific effluent limit development.

In addition to process optimization and rehabilitation, RVE provides full planning, permitting and design services for treatment plant expansions and new facilities, incorporating redundancy, energy efficiency, odor control, SCADA integration and climate-resilient infrastructure design. Our multidisciplinary team prepares detailed construction documents, specifications, sequencing plans and operations and maintenance (O&M) protocols while coordinating with local, state and federal agencies for permitting under the CWA and related regulatory frameworks.

Whether conducting detailed process modeling, developing phased capital improvement programs, or delivering turnkey design for new treatment facilities, RVE provides technically rigorous, forward-looking solutions that support regulatory compliance, operational reliability and environmental protection.

Combined Heat and Power (CHP)/Co-Generation Facilities—Design, Permitting and Troubleshooting—CHP technology represents a highly efficient and sustainable energy recovery solution for wastewater treatment facilities operating or planning to implement anaerobic digestion (AD) systems. CHP systems utilize the biogas generated from the anaerobic digestion of biosolids as a renewable fuel source to produce electricity and thermal energy simultaneously. Modern CHP configurations employ reciprocating internal combustion engines, microturbines, or high-efficiency fuel cells as prime movers to convert biogas into usable energy.

The electrical output generated by the CHP system can offset facility power demand, while the thermal energy is recovered and reused to maintain optimal digester operating temperatures (typically 95–100°F) and to support ancillary heating loads within the facility. This dual-output approach significantly improves overall energy efficiency, often achieving efficiencies exceeding 70%, compared to the 30–35% typical of grid-supplied electricity alone.

From a financial perspective, CHP reduces reliance on purchased electricity and fossil fuels, resulting in long-term operational cost savings. In many jurisdictions, CHP systems fueled by digester gas also qualify as renewable energy systems under state Renewable Portfolio Standards (RPS) and may be eligible for Renewable Energy Credits (RECs), net metering and utility incentive programs.

RVE designs CHP systems that are integrated into the treatment plant's energy balance process, ensuring reliability and resilience during peak loads or power grid interruptions. We also perform feasibility analyses including biogas production forecasting, load matching, waste heat recovery assessments, interconnection planning and emission compliance reviews in accordance with EPA's New Source Performance Standards (NSPS) and local air permitting requirements.

By utilizing CHP, treatment plants not only improve energy independence and resiliency but also reduce greenhouse gas (GHG) emissions and other criteria pollutants through displacement of grid electricity and natural gas, supporting broader sustainability and climate goals.

Odor Control—Collection Systems, Pump Stations and Wastewater Treatment Plants—Odor issues in wastewater infrastructure are more than just a nuisance, as they can escalate into significant public relations challenges and regulatory concerns for system owners. RVE provides comprehensive odor control engineering services across the entire wastewater system, including gravity collection systems, force mains and pump stations and treatment facilities. Our process begins with site-specific waste stream characterization, including liquid sampling, air sampling and airflow rate measurements at critical points such as wet wells, headworks, primary clarifiers and biosolids handling areas. This data informs the development of a Basis of Design (BOD) for odor control feasibility assessments and subsequent technology selection.

Our team evaluates and specifies odor mitigation technologies tailored to the source and type of odorous compounds, such as hydrogen sulfide, mercaptans and ammonia. Solutions may include chemical dosing (i.e., ferric chloride, nitrate), carbon or biofiltration systems, wet scrubbing, oxygenation and air handling upgrades. RVE's system designs incorporate all supporting infrastructure, including water and chemical supply lines, ductwork and air conveyance systems, automated controls, structural modifications and waste disposal connections. We ensure that each system is designed not only for performance and reliability, but also for operational accessibility and long-term maintainability.

For pump stations and force mains, we address both point-source and dissolved-phase odor control, applying strategies such as in-line dosing stations, pressure zone analysis and air release/vacuum valve optimization. Within collection systems, we evaluate manhole venting, pipe slope conditions, septicity potential and flow retention zones that contribute to odor generation.

RVE's air permitting specialists are integrated early in the design process to determine whether the selected odor control technologies trigger local, state, or federal permitting thresholds. We prepare all required air quality modeling, emissions calculations and permit documentation to ensure full regulatory compliance.

NJPDES permit applications—Compliance and Petitioning—RVE provides technical expertise in the preparation, management and negotiation of New Jersey Pollutant Discharge Elimination System (NJPDES) permits for municipal and industrial wastewater treatment facilities. The NJPDES program regulates the discharge of treated effluent, sludge and stormwater to surface and ground waters, with permit conditions specifying mass and concentration-based effluent limitations for conventional, priority and emerging pollutants. Our engineers and regulatory specialists develop detailed permit applications and supporting analyses that form the regulatory and design basis for both new treatment facilities and upgrades to existing plants.

As part of this process, RVE performs comprehensive influent and effluent sampling, loading projections and receiving water impact evaluations to ensure permit limits are accurately aligned with site-specific conditions. We conduct stream assimilative capacity studies, CORMIX mixing zone modeling and water quality-based effluent limit (WQBEL) calculations to support applications and identify opportunities for more reasonable or technically appropriate discharge parameters. Where applicable, RVE prepares and submits formal petitions for relaxed or modified permit limits, supported by defensible data and technical justification, including demonstrated treatment performance, background water quality data and regulatory precedent.

In coordination with NJDEP and stakeholders, we ensure that NJPDES permits reflect achievable compliance thresholds while protecting water quality and facilitating cost-effective plant design. RVE's deliverables include detailed engineering reports, anti-degradation analyses, treatment process modeling (i.e., BioWin) and facility planning documents that directly inform hydraulic, process and structural design criteria. This integrated approach

ensures that permits are not only administratively complete but also technically robust, supporting efficient, compliant and scalable wastewater infrastructure development.

Municipal Industrial Pre-Treatment (IPP) Administration—RVE provides comprehensive engineering and regulatory support for the development, implementation and optimization of IPPs in accordance with 40 CFR Part 403. Services include permitting, enforcement response planning and program documentation, as well as technical evaluations of industrial dischargers. A core component of our approach involves detailed modeling of the wastewater collection and treatment system to develop technically defensible local limits. These models incorporate influent loadings, treatment plant capabilities, inhibition thresholds and pass-through potential to ensure that industrial discharges do not compromise biological processes, sludge quality, effluent compliance, or worker safety.

Our team conducts a full pollutant load analysis, sampling of key industrial contributors and characterization of treatment system performance, including secondary and tertiary processes. We use this data to perform loading calculations and simulate contaminant removal efficiency, ensuring that local limits are protective of both the treatment facility and receiving water bodies. RVE also assists utilities with the preparation of IPP submittals to state and federal agencies, annual reports and user permit development. Through our IPP services, we help municipalities achieve regulatory compliance, protect infrastructure and manage industrial sources of pollution effectively.

Process System Controls/Instrumentation Upgrades—RVE uses a variety of methods for process control on our projects. They range from simple hand off automatic (HOA) switches for pumps and clarifiers that remain constantly on to complex PLC control for processes that require continuous computer control of the mechanical components. Our approach emphasizes worker safety and code compliance and often includes additional lockouts and disconnects at the process equipment. RVE's goal is to minimize energy usage, as we replace legacy systems with new technology.

Water & Wastewater Planning and Assessment

Water and Wastewater Master Plans—RVE develops comprehensive Water and Wastewater Master Plans that serve as strategic blueprints for long-term management, expansion and optimization of utility infrastructure. These plans are based on a combination of geospatial data, field-verified system information, hydraulic and process modeling, population and land-use projections and regulatory requirements. Our master planning process is designed to provide a clear, data-driven framework for prioritizing improvements, ensuring regulatory compliance and supporting sustainable growth.

The planning process begins with the inventory and evaluation of existing assets, including water distribution systems, sanitary collection networks, pump stations, treatment facilities, storage tanks and pressure or flow-regulating devices. RVE conducts field surveys, condition assessments, GIS data collection, CCTV inspections and SCADA system reviews to develop an accurate and complete picture of the utility system. For wastewater systems, this includes analysis of I&I, capacity limitations, manhole conditions and pipe integrity. For water systems, we assess pressures, flow rates, storage adequacy, fire-flow capacity and water quality considerations.

Using tools such as WaterGEMS, SewerGEMS and BioWin, our team performs hydraulic and process modeling to simulate current system behavior under a range of scenarios, including peak flow, drought, storm events and future demand conditions. This modeling allows us to identify hydraulic bottlenecks, underperforming assets and capacity shortfalls in both collection and treatment systems. We also use build-out analyses based on zoning and development trends to forecast system needs over 10-, 20- and 30-year horizons. These projections inform the sizing of future mains, interceptors, pump stations and treatment process units.

Master plans also address evolving federal and state regulatory requirements, such as effluent nutrient limits, drinking water maximum contaminant levels (MCLs), lead and copper rule revisions and capacity assurance mandates. RVE integrates regulatory compliance planning into the master plan by evaluating treatment performance, identifying potential permit constraints and recommending necessary upgrades or expansions. Operational recommendations are developed to improve system efficiency, reliability and safety, including SCADA upgrades, energy optimization, redundancy enhancements and resiliency measures to withstand climate-driven events.

The final master plan includes a phased CIP, which prioritizes system upgrades and expansions based on risk, cost, regulatory urgency and operational benefit. Each recommended project is supported by cost estimates, conceptual layouts and an implementation timeline. We also identify potential funding sources such as SRF (State Revolving Fund) programs, United States Department of Agriculture (USDA) Rural Development grants and Federal Emergency Management Agency (FEMA) resilience funding and assist with the preparation of funding applications using data and documentation from the master plan.

Water and wastewater master plans developed by RVE are used by municipalities, authorities and utilities to support budget development, policy decisions, asset management programs and regulatory negotiations. They also serve as critical documents in land use and zoning coordination, intermunicipal agreements, treatment capacity allocation and long-term environmental planning. Because our master plans are based on defensible data and detailed modeling, they serve as reliable technical resources for future design work, permitting and public communications.

Asset Management and CIPs—RVE develops comprehensive Asset Management Plans (AMPs) that align with EPA and NJDEP guidelines, providing utility owners with a structured, data-driven framework for making informed decisions about the maintenance, rehabilitation and replacement of infrastructure. These plans are centered around five core elements: asset inventory, condition assessment, criticality analysis, life-cycle costing and long-term capital planning.

The process begins with the development of a detailed asset inventory, which includes all critical water and wastewater infrastructure components such as pipes, valves, hydrants, meters, pump stations, manholes, tanks, treatment plant process units, electrical systems and SCADA infrastructure. Each asset is cataloged by location, size, material, installation date, useful life and historical maintenance or upgrading data. Where available, GIS integration is used to spatialize mapping and manage asset data in real-time.

Following the inventory, RVE performs comprehensive condition assessments using a combination of field inspections, historical performance reviews, SCADA data and industry-standard inspection techniques such as CCTV evaluations, acoustic leak detection, pressure testing and manhole surveys. Each asset is rated using a condition grading system, typically on a 1–5 scale and coupled with a Consequence of Failure (CoF) rating to assess operational criticality. The result is a risk-based prioritization matrix, which identifies high-priority assets requiring immediate attention and those suitable for monitoring or deferred action.

Using this analysis, RVE develops a CIP that prioritizes renewal and replacement projects based on condition, risk, regulatory compliance, operational efficiency and cost-effectiveness. Each CIP includes project scopes, preliminary engineering recommendations, cost estimates (based on unit rates and recent bid history), phasing schedules and identification of potential funding sources. The plan also includes life-cycle cost evaluations to compare repair versus replacement options and to optimize the timing of investments.

Importantly, AMPs also serve as key support documents for securing funding through the New Jersey Infrastructure Bank (NJ I-Bank). A well-developed AMP demonstrates regulatory alignment, system understanding and financial responsibility, often improving project ranking for low-interest loans and grants. RVE ensures that the

cost of AMP development and implementation is eligible for reimbursement under NJ I-Bank capital improvement projects, further reducing the financial burden on clients.

In addition to supporting day-to-day asset planning, RVE's AMPs enhance transparency in capital spending, improve budget forecasting and help utility managers communicate system needs to stakeholders, elected officials and regulatory agencies. They also provide a foundational platform for long-term planning, resilience assessments and integration with digital asset management platforms.

Utility Rate Analysis—RVE performs comprehensive utility rate analyses to evaluate the financial sustainability of water and wastewater utilities and to ensure alignment between revenue generation, system operating costs and long-term capital improvement needs. A properly structured rate analysis enables utility owners to proactively identify and address funding shortfalls, mitigating the need for abrupt rate increases while ensuring regulatory compliance and reliable service delivery.

The analysis begins with a detailed review of the utility's operational expenditures, historical revenue and capital expenditures, along with an assessment of system condition, capacity utilization, regulatory obligations and projected asset reinvestment requirements. RVE incorporates data from AMPs, Capital Improvement Plans (CIPs), debt service schedules, reserve balances and anticipated regulatory-driven improvements to forecast financial obligations over a five- to 20-year planning horizon.

Using this financial model, RVE evaluates the adequacy of the existing rate structure, whether flat, tiered, consumption-based, or fixed-plus-variable, against the projected revenue requirements. We assess the rate sufficiency, equity among user classes and the elasticity of demand. Scenarios are developed to test the impact of different rate structures, customer growth rates and capital spending schedules. This includes the evaluation of alternative rate strategies, such as inclining block rates, seasonal surcharges, capacity charges and infrastructure replacement fees, to optimize revenue generation while maintaining affordability and fairness for ratepayers.

Our deliverables include rate sensitivity analyses, break-even evaluations, affordability metrics and recommendations for phased adjustments that minimize customer impact while achieving full cost recovery. The final utility rate report supports strategic financial planning, compliance with bond covenants or loan conditions (i.e., NJ I-Bank funding) and provides defensible documentation for public hearings and regulatory reviews.

Connection Fee Analysis—RVE provides comprehensive connection fee analyses for water and wastewater utilities to ensure fees are equitable, legally defensible and compliant with New Jersey statutes and regulations, particularly N.J.S.A. 40:14B-22 and 40A:31-11. A properly calculated connection fee must reflect a new customer's fair share of the capital investment in the utility system, including both current assets and any outstanding or defeased debt incurred to construct or upgrade system infrastructure.

Our analysis involves a detailed examination of the utility's capital asset ledger, depreciation schedules, historical capital improvement expenditures and associated debt service, including bond amortization and any defeased obligations. We allocate the value of these investments over the current and projected customer base to calculate a per-equivalent dwelling unit (EDU) or per-gallon fee that accurately reflects system buy-in costs without creating disproportionate burdens.

RVE prepares formal connection fee reports that include all required backup documentation, such as historical cost data, debt instruments, user allocation tables and system capacity summaries. These reports are designed to withstand scrutiny during public hearings, audits and legal challenges and they comply with applicable guidance issued by NJDEP, Department of Community Affairs (DCA) and the NJ I-Bank.

In addition to preparing defensible documentation, RVE has provided expert testimony in administrative and legal proceedings involving contested connection fees. Our experience supporting numerous authorities and

municipalities across New Jersey ensures our clients are prepared to adopt justifiable fees that balance capital cost recovery with fairness to new users.

Additional Water and Wastewater Services

Public Outreach Campaigns and Customized Interactive Websites—RVE’s public outreach specialists partner directly with municipalities, authorities and public agencies to develop and execute strategic outreach campaigns tailored to the specific needs of each infrastructure project. Whether for water main replacements, lead service line replacements, sewer rehabilitation, road reconstruction, or system-wide utility upgrades, our team crafts targeted communication plans that address the concerns of residents, businesses and other key stakeholders. We identify and segment target audiences by geography, user type, or service impact and customize messaging and distribution methods to ensure clarity, transparency and community support.

As part of this approach, RVE develops customized, interactive websites that serve as centralized hubs for project updates, frequently asked questions, contact information and public notices. These client-branded platforms provide real-time updates, progress tracking and response logs, greatly reducing the volume of calls received by municipal or authority staff. Users can submit complaints or inquiries directly through the platform and the system records response time and resolution tracking to ensure accountability and improve customer satisfaction. All websites and outreach tools are fully customizable to align with the client’s visual identity, communication preferences and administrative structure. From mailers and email blasts to public meetings and social media content, our Public Outreach Team ensures that residents remain informed, engaged and supported throughout the lifecycle of a project.

Funding Expertise—RVE offers comprehensive funding strategy and implementation services for municipalities, utility authorities and counties undertaking water and wastewater infrastructure projects. Our team has deep expertise in identifying and navigating the complex web of federal, state and local funding opportunities, ensuring that clients maximize available resources while maintaining compliance with regulatory and financial requirements. We specialize in developing customized funding strategies that combine multiple sources, including loans, grants, subsidies and principal forgiveness programs, to make critical utility upgrades financially feasible and resilient against rising costs.

At the state level, RVE is uniquely positioned as a trusted partner to the NJ I-Bank. We serve as an on-call consultant under two separate NJ I-Bank contracts, to assist municipalities, counties and authorities across New Jersey with project development, eligibility assessment and funding application preparation. Our work supports projects seeking financing through NJ I-Bank’s Clean Water State Revolving Fund (CWSRF) and Drinking Water State Revolving Fund (DWSRF) programs, administered in partnership with NJDEP. These programs offer below-market interest loans and, in many cases, principal forgiveness and grants for qualifying projects and entities, especially those that address emerging contaminants (i.e., PFAS), lead service line replacements, CSO mitigation, asset management and climate resiliency.

In addition to state resources, RVE routinely identifies and helps clients pursue federal funding opportunities including:

- Bipartisan Infrastructure Law (BIL) funding, which provides historic investments through SRF programs and additional appropriations for lead service line replacement, emerging contaminant treatment and system resilience.
- FEMA funding through Hazard Mitigation Grant Program (HMGP) and Building Resilient Infrastructure and Communities (BRIC) for flood mitigation, generator installations and pump station hardening.
- USDA Rural Development Water & Waste Disposal Loans and Grants, supporting rural communities with low-interest loans and grant assistance for treatment plants, pump stations and water mains.

- EDA Public Works Program, which can provide grants for infrastructure improvements in economically distressed areas, including water and sewer upgrades to support business and job growth.
- Community Development Block Grant (CDBG) funding, administered at the county or state level, used for utility improvements in low-to-moderate income areas.

RVE also supports applications to state-level sources such as:

- New Jersey DCA Local Aid Infrastructure Fund
- New Jersey Board of Public Utilities (NJBPU) Resilience and Energy Efficiency Programs
- New Jersey Department of Transportation (NJDOT) Local Aid Programs, where utility work is part of transportation or streetscape improvements.

Our team prepares all necessary documentation including Environmental Planning Documents, Resiliency Plans, Socially & Economically Disadvantaged (SED) Plans, Engineering Feasibility Reports, AMPs, Preliminary Engineering Reports (PERs), Funding Applications, Benefit-Cost Analyses and public hearing support materials to ensure that projects are shovel-ready and fully compliant with funding agency requirements. We also manage construction-phase compliance including American Iron and Steel certifications, Davis-Bacon wage reporting, M/D/SBE participation tracking and financial reporting to meet loan or grant conditions.

By leveraging our integrated expertise in engineering, funding strategy and regulatory compliance, RVE ensures clients receive maximum financial benefit, accelerate project delivery and build water and wastewater infrastructure that meets today's needs and tomorrow's challenges.

Trenchless Technologies—Design and Construction—RVE has developed a strong reputation in the trenchless design and installation of water mains, sanitary force mains and sanitary gravity mains, providing municipalities and utilities with cost-effective solutions that minimize disruption to communities and the environment. Our approach begins with a comprehensive evaluation of project requirements and site conditions to determine whether trenchless methods such as horizontal directional drilling (HDD), micro tunneling, jack-and-bore, or pipe bursting are the most appropriate and beneficial compared to traditional open-cut methods. This upfront planning ensures that system reliability, constructability and long-term performance are at the forefront of every design.

A critical part of our trenchless design process is a thorough geotechnical investigation. Subsurface conditions, including soil type, rock strata and groundwater levels, are carefully analyzed to assess risks and determine the most suitable installation method. By aligning trenchless technology selection with these geotechnical findings, we are able to optimize bore paths, reduce construction risks and ensure that the pipe material, diameter and alignment are tailored to both hydraulic needs and site constraints.

Our selection of trenchless technology is project-specific and based on technical, environmental and operational considerations. For example, HDD may be chosen for long crossings under rivers or wetlands, while jack-and-bore or micro tunneling may be more appropriate for highway or rail crossings requiring precise grade control. This expertise allows RVE to design trenchless installations that balance constructability, cost and community impact, while ensuring full compliance with regulatory and permitting requirements.

RVE's leadership in trenchless technology has been recognized nationally by Trenchless Technology Magazine as we have been named among the Top 50 Trenchless Technology Experts for five consecutive years. This distinction reflects not only our technical expertise, but also our practical experience implementing trenchless solutions across a wide range of challenging environments. Our clients benefit from this proven track record, knowing that each project is backed by industry-recognized knowledge, rigorous design practices and hands-on experience that deliver results.

Water and Sanitary Master Plan Development—RVE provides municipalities and utility authorities with comprehensive planning services to ensure that water and sanitary sewer systems can support both current needs and future growth. A critical component of this planning is our build-out analysis, which estimates the full development potential of a service area under existing zoning laws and land-use regulations.

Using advanced GIS technology, we map and analyze land parcels, zoning classifications and utility service boundaries to project the scale and location of future development. This allows us to identify potential stress points within the existing utility network and uncover gaps in capacity that could limit future service.

We then translate these insights into realistic infrastructure recommendations that support long-term growth while avoiding unnecessary overbuilding. Using system modeling tools such as WaterGEMS, SewerGEMS, InfoWorks, etc., we simulate future flows and demands to evaluate their impact on existing water and sewer infrastructure. This analysis identifies where capacity constraints may arise and what improvements are necessary to maintain reliable service.

This process directly assists in the development of water and sanitary sewer master plans, ensuring they are not only technically sound but also financially and operationally sustainable. Our approach balances engineering expertise with fiscal responsibility. We assess the cost impacts of required system upgrades, extensions, or new facilities and provide municipalities with clear, data-backed prioritization strategies. This enables communities to phase capital improvements, align investments with budget cycles and strengthen their position when applying for grants or other funding sources.

Whether you're serving a growing suburban area, managing infill development, or preparing for large-scale redevelopment, RVE delivers the modeling tools, planning insight and strategic guidance needed to make smart, forward-looking decisions for your water and sewer systems.

Geotechnical Engineering—A thorough knowledge of subsurface conditions is essential to good design practice. Each project begins with a thorough geological investigation of existing data and a project-specific study of the site in support of the proposed project. At the project's inception, RVE develops an integrated data gathering and an engineering understanding of the geological, hydrological and soil conditions of the project site. Our geotechnical staff works in close conjunction with staff design engineers, drilling contractors, testing laboratories and other known data providers to obtain the necessary data and design information to develop a comprehensive geotechnical understanding of each specific project.

Site Remediation Services—RVE provides comprehensive environmental services from the onset of environmental reviews (Phase I Site Assessments and/or Preliminary Assessments) through the final stages of large, multi-stakeholder property development Response Action Outcomes for Certificates of Occupancy. Our Licensed Site Remediation Professionals (LSRPs) have extensive experience and have developed a record of successful environmental liability management. RVE's environmental experts are experienced in managing every aspect of a project from investigation to remediation to closure.

Survey/CAD/GIS Services—RVE provides precise and reliable surveying and mapping services that support all phases of water and wastewater infrastructure planning, design and construction. Leveraging over a century of surveying experience and the latest technologies including Trimble GPS equipment, State Plane Coordinate System integration and advanced AutoCAD Civil 3D tools, our Licensed Professional Surveyors deliver accurate base mapping essential for utility system layout, grading and easement acquisition.

Our survey data underpins hydraulic modeling, treatment plant site design, pump station grading and utility coordination, while our GIS team supports asset inventory, condition tracking and geospatial analysis. Using platforms such as ArcGIS and MicroStation, we develop and maintain utility system maps, link asset data to geospatial locations and assist with regulatory compliance and long-term asset management.

RVE's cartography and GIS specialists also prepare detailed mapping products for municipal clients, including utility system overlays, capital planning maps, zoning layers and infrastructure phasing plans. These services are essential for the accurate documentation and visualization of proposed improvements to collection systems, distribution networks and treatment facilities, ensuring every project is built on a foundation of data integrity and spatial accuracy.

GIS Database Hosting—RVE's GIS and cartography professionals play a critical role in supporting the planning, design and management of water and wastewater infrastructure. Our team prepares high-quality, regulatory-compliant GIS deliverables essential for mapping collection systems, distribution networks, pump stations, treatment facilities and related assets. Using the Esri ArcGIS Enterprise platform, we provide both on-premises and cloud-based solutions for hosting, analyzing and visualizing geospatial data specific to utility systems.

Through ArcGIS, RVE enables clients to track, analyze and manage infrastructure performance over time. Our tools support hydraulic model calibration, capital planning and regulatory reporting by uncovering spatial trends, flow anomalies and system vulnerabilities. This spatial intelligence directly informs asset reinvestment decisions and operational strategies.

We specialize in building custom GIS-based asset management platforms tailored to water and wastewater and utilities. These systems integrate digital system maps, asset metadata, preventive maintenance schedules, inspection records, customer complaint tracking and work order management, all linked to specific assets or locations. This allows utility operators to streamline operations, enhance service reliability and improve documentation for permitting and compliance audits.

By aligning GIS infrastructure with SCADA, Computerized Maintenance Management System (CMMS) and other operational platforms, RVE creates a centralized data environment that enhances decision-making and supports proactive utility management. Our solutions are scalable, department-specific and fully configurable to meet the diverse needs of municipal and regional water and wastewater providers.

Water and Wastewater Specialized Construction Management/Resident Engineering—RVE provides specialized construction management and inspection services for water and wastewater infrastructure, combining technical oversight with a thorough understanding of funding program requirements and regulatory compliance. Acting as the owner's representative, our water and wastewater construction team manages projects from preconstruction through startup and turnover, ensuring alignment with design specifications, budgetary constraints and state and federal permitting conditions.

Our water and wastewater construction inspectors are highly trained in water and wastewater systems, with hands-on experience in the field inspection of gravity sewers, force mains, water distribution systems, pump stations, treatment process units, storage and mechanical and electrical systems. We enforce specification adherence through comprehensive site monitoring, submittal reviews, daily reporting and coordination with contractors, utility operators and design engineers. Field inspections include leak detection, hydrostatic testing, disinfection and bacteriological sampling, pump testing, bypass operations and start-up verification.

RVE's team is well-versed in the regulatory obligations tied to NJDEP, USEPA and local permitting, including TWA, Bureau of Safe Drinking Water construction permits, wetlands/flood hazard area compliance and NJPDES permit conditions. We ensure that required inspections, reporting and documentation are completed in accordance with these permits throughout the construction process.

In addition, RVE provides guidance and documentation in compliance with funding agency requirements, including those of the New Jersey I-Bank, USDA Rural Development, FEMA and SRF programs. This includes adherence to procurement standards, certified payroll (Davis-Bacon), American Iron and Steel (AIS) requirements, DBE

participation and comprehensive recordkeeping. We assist in generating contractor certifications, progress reports, reimbursement requests and closeout documentation to maintain funding eligibility and audit readiness.

By integrating construction management, regulatory oversight and funding compliance, RVE ensures water and wastewater infrastructure projects are completed efficiently, meet all permitting and funding requirements and deliver long-term value to the communities they serve.

Since water and wastewater construction projects often involve other types of construction (concrete, road restoration, traffic control, etc.), our water and wastewater inspection team is also trained and received certifications with industry standards such as American Concrete Institute (ACI), NACE, NJ Society of Asphalt Technologies (NJSAT) and Traffic Control Coordinators (TCC).

RVE provides full time or part time onsite inspection of all construction operations and project oversight consisting of biweekly construction meeting with the Contractor and Owner, facilitating the review and distribution of Requests for Information (RFIs) and submittals, review and prepare contractors pay estimates, collecting and provide Local Public Agency necessary monthly documentation and provide a complete closeout package inclusive of a final inspection.

Contract Administration—We work in partnerships with designated officials to review contract interpretations and requests for field changes or change orders. RVE’s contract specialists review contractor payment requests to ensure that unwarranted payment requests are identified and remain unpaid. We ensure the required documents are received including the maintenance bond and any required warranties. Many capital improvement projects are funded by outside agencies with strict regulations for job completion. As applicable, our staff completes required source documentation to assist our clients in receiving these funds in a timely manner.

Landfill Engineering and Permitting—RVE designs innovative and regulatory compliant waste transfer and disposal facilities including liner, cover, drainage systems and solid waste facility infrastructure that help communities meet new waste diversion and greenhouse gas reduction requirements. We are knowledgeable of the requirements for comprehensive landfill planning and permitting, design, construction, operations, monitoring, maintenance and closure. Our staff includes planners, engineers and designers, geologists, permitting specialists, groundwater treatment specialists, construction managers and inspectors can provide a broad range of landfill engineering services. Service capabilities include soil management planning, grading, drainage and erosion control plans, stormwater pollution control, drainage structures and detention basins, pumping systems, leachate management, landfill expansion and optimization, final cover and closure design and redevelopment.

Operations and Management

WRM provides O&M support to state agencies, counties, municipalities, regional municipal utilities authorities and private sector clients, delivering reliable and compliant operation of water and wastewater treatment facilities, collection and distribution systems and industrial pretreatment systems. Our team includes licensed operators, engineers, compliance specialists and utility management professionals with decades of hands-on experience in both municipal and industrial utility operations.

Our services cover the daily operation, monitoring and maintenance of drinking water and wastewater treatment plants, pump stations, well systems, storage tanks and related appurtenances. WRM’s licensed operators ensure all facilities are operated in compliance with NJDEP and federal USEPA regulations, including those associated with Safe Drinking Water Act (SDWA) and CWA mandates. Operations include process optimization, chemical feed calibration, SCADA monitoring, equipment maintenance and emergency response coordination.

WRM also manages all aspects of regulatory compliance, including routine and specialized sampling, laboratory coordination, NJPDES and BPU compliance reporting, Consumer Confidence Reports (CCRs) and discharge monitoring report (DMR) submittals. Our staff has extensive experience navigating permit conditions, emerging

contaminant monitoring (i.e., PFAS, 1,4-dioxane) and coordinating with regulatory agencies on behalf of our clients.

WRM's team can also support clients during periods of transition, providing interim staffing, operator licensing support, standard operating procedure (SOP) development and commissioning assistance for new facilities. Whether managing a small groundwater system or a large regional treatment facility, WRM delivers safe, efficient and compliant operation tailored to each client's technical and regulatory needs.

Working with Water and Wastewater Engineers—RVE integrates the expertise of WRM's certified water and wastewater operators directly into the design process for treatment plants, pump stations and utility system improvements. By incorporating professionals with active, hands-on experience operating public and private utility systems, RVE enhances its designs with practical insight into how infrastructure performs under real-world conditions. WRM's staff provides valuable input on equipment layouts, process configuration, system control strategies and operational access, helping to ensure that final designs are not only technically sound, but also efficient, maintainable and operator friendly.

While the client's operational staff remains the primary authority on system-specific preferences and procedures, the addition of WRM's operational perspective provides an added layer of technical validation. Their feedback often identifies maintenance constraints, energy optimization opportunities, chemical handling considerations and SCADA usability enhancements that may not be immediately apparent during the design phase. This collaboration between RVE's engineering team and WRM's field personnel results in infrastructure that supports long-term operational reliability, regulatory compliance and streamlined facility management, ultimately delivering better value to the client and improving system performance from day one.

Wastewater treatment—WRM operates a variety of plants and systems including advanced tertiary treatment systems. The WRM staff can supply the technical expertise and routine maintenance and management of the facility, while controlling costs. WRM provides professional expertise to perform the operational and maintenance functions. One or more operators are assigned for normal operations and specialists are provided as needed.

WRM can assist with administrative responsibilities such as payroll management, personnel relations, insurance and retirement benefits. WRM provides access to an improved records management system to assist operators with tracking various parameters. Generally, reporting is daily, weekly, monthly and annually and is reviewed by specialists to maintain the systems at optimum levels for regulatory compliance.

Treatment plants may experience problems due to influent loading or engineering limitations. Treatability studies may be required before making process engineering changes. If process changes are necessary, WRM can assist in the engineering for plant modifications.

Water Treatment—A public water treatment system is defined and classified according to a system of points assigned for the size and treatment. State Water and Wastewater Licensing Act and Federal Guidelines require owners of all community and non-transient non-community water systems to place direct supervision of their treatment facility and/or distribution system under the responsible charge of an operator holding a valid certified license equal to or greater than the classification of the treatment facility and/or distribution system. WRM staff is qualified to operate any system classification with professional staff licensed in all of the required water treatment and water distribution licenses.

Process Improvement—There are operational techniques and low-cost improvements that can have a substantial impact on energy and operational costs. WRM has expertise in many operational techniques and processes from numerous different systems which allow us to import the best practices from those systems into our clients' systems. WRM reviews each water utility under their management for prospective process improvements. No cost items are implemented; cost items are proposed to the client to make a capital expenditure.

Compliance—The penalties for non-compliance with the EPA and DEP can be significant. Our staff understand the complex and evolving regulations and will keep systems in compliance. Submitting compliance reports on time, managing concerns and issues and maintaining system compliance are all critical components of WRM’s approach.

Sampling Plans—Plans for routine sampling, revised total coliform and lead and copper are facing ever increasing scrutiny from the DEP in response to public pressure and new scientific data on health. WRM staff stay updated on all evolving legislative issues.

Succession Planning—A viable succession plan helps our clients develop a pipeline of qualified Operators to ensure continued operation. WRM works with clients to develop a tailored Succession Plan that meets specific requirements and, if needed, WRM personnel can supplement client staff by serving as a Licensed Operator of Direct Responsible Charge, acting as a Part-time Backup Operator or providing management oversight.

O&M Manuals and SOPs—WRM provides expert support in the evaluation, revision and enhancement of O&M Manuals and SOPs to ensure they reflect current operational practices, regulatory requirements and system-specific conditions. Effective documentation is critical to utility performance, relying solely on institutional knowledge or verbal instruction often leads to inconsistencies, inefficiencies and compliance risks. WRM’s team of experienced operators and compliance professionals conducts a detailed review of existing manuals to identify gaps, outdated procedures and missing operational context.

We update and restructure O&M Manuals to provide clear, step-by-step guidance on routine maintenance tasks, emergency response protocols, equipment operation, safety requirements (including personal protective equipment), system monitoring and regulatory reporting. In addition, we develop or revise SOPs that are aligned with NJDEP permit requirements, manufacturer specifications and best operational practices, ensuring consistency and accountability across shifts and personnel changes. These enhanced documents not only improve training and onboarding but also support audit readiness and operational continuity. Whether for treatment plants, pump stations, distribution systems, or collection networks, WRM ensures that all O&M documentation is comprehensive, utility-specific and designed for real-world applications.

Project Experience

Profiles detailing our most recent, regional municipal experience are provided in [Section 3](#).

Client References

RVE has provided our client references in [Section 4](#).

Required Documentation

RVE has provided all required signed documentation and certifications in [Section 5](#).

Resumes of Key Staff

Section 2

Alan Dittenhofer, PE, PP, CME

Principal in Charge

Executive Vice President

Overview

- More than three decades of engineering experience
- Responsible for projects undertaken in Ocean and Monmouth Counties
- Represents RVE at various public meetings and serves as Consulting Engineer to New Jersey communities, school districts, County agencies and municipal utility authorities

Work History

RVE experience: 1987 to present

Total experience: 38 years

Education

B.S., Mechanical Engineering,
University of New Mexico

Certifications/Registrations

Professional Engineer – NJ, PA

Professional Planner – NJ

Certified Municipal Engineer – NJ

Representative Project Experience

Tax Map Maintenance, Barnegat Township, NJ – Principal in Charge responsible for the firm's professional services contract for Tax Map Maintenance. Services include tax map updates and revisions; block, lot and address number assignments; and GIS updates in conjunction with tax map maintenance.

Driveway and Parking Lot Improvements, Barnegat Township School District, NJ – Principal in Charge responsible for the review the condition of the eastern entrance to the Cecil S. Collins Elementary School and provide an estimate to construct a new paved parking area at the Administration Building. Work consisted of the repair of the existing pavement and replacement of the top courses with hot-mix asphalt. The parking lot at the Administration Building was designed to add less than ¼ acre of impervious area and include 18' parking spaces and a 24' roadway width. Speed hump and the crosswalk striping were also included.

Various Positions, Berkeley Township, NJ – Principal in Charge responsible for the firm's professional services contract to serve as Capital Projects Engineer, Planning Board Engineer and Planner, Zoning Board Engineer and Planner, Community Development Block Grant Coordinator and Open Space Planner. Recent experience includes Annual Road Program Coordination, Beachwood Mall Remedial Investigation/HDSRF, Berkeley/South Seaside Park Deannexation, Butler Boulevard Park Reconstruction, Butler Boulevard Dog Park, Certified Floodplain Management Services, Clamming Creek Dredging, Eastern Boulevard Sports Soccer Complex Expansion, Holiday City Culvert Reconstruction, Holiday City Community Center Generator Replacement, JFK Boulevard Reconstruction, Little League Turf Fields, Main Street Beach Site Investigation and Green Acres Due Diligence, Main Street Park and Boat Ramp, Phase I Sidewalk Safety Lane – Berkeley Bike Path, Police Station and Administration Building Generators, Solar Farm at Landfill Stormwater Management Basin at Moorage Park, Turf Field at Veterans Park, Various Road Reconstruction and Drainage Improvement Projects, Veterans Park Lighting Improvements and Whispering Pines Pickleball Courts.

Borough Engineer and Planner, Beachwood Borough, NJ – Principal in Charge responsible for the firm's professional services contract to serve as Borough Engineer and Planner. Recent experience includes Aeration System Inspection and Cleaning, Beachwood Beach Shore Protection, Borough Hall Roof Replacement, Dock Reconstruction at Marina, Forecast Road Extension, General Reexamination of the Master Plan, GIS Water Utility Infrastructure System Mapping and Asset Management Plan for NJ WQAA Compliance, HVAC Control System Replacement, Installation of a Temporary Iron Removal Treatment System for the Beachwood Water Treatment Plant, NJDOT Reconstruction of Various Roads, Police Department 15-ton Condensing Unit Replacement, SCADA System Upgrades, Seaman Avenue Drainage Improvements, Solar Panel Installation, Sunset Road Extension, Various Road and Drainage Reconstruction, Water Main Replacement at Various Locations, Water Treatment Plant Replacement Project, Water Treatment Plant Replacement Project, Wave Street Water Main Reconstruction and Well No. 6 Rehabilitation.

Special Projects Engineer, Lacey Township, NJ – Principal in Charge responsible for the firm's professional services contract to serve as Special Projects Engineer. Recent experience includes Bamber Lake Basketball and Tennis Court Reconstruction, Bayside Beach Maintenance Dredging, Clairmore Avenue Drainage Study, Dredging of Wordens Oyster Pond, Feasibility Study - Gravity Sanitary Sewer Extension, Good Luck Cemetery Expansion, Hancy's Pond Maintenance Dredging, Hancy's Pond Maintenance Dredging, Hancy's Pond Shoaling Issues, Hebrew Park Pickleball Courts, HVAC Building Control System Replacement, Monument and Dog Park at Gille Park, MS4 Consulting Services, Stormwater Pollution Prevention Plan (SPPP) and Stormwater Management Plan (SWMP), Stout's Creek Maintenance Dredging, Walkway at Bud Mazera Park and Worden's Oyster Pond Maintenance Dredging.

Various Positions, Little Egg Harbor Township, NJ – Principal in Charge responsible for the firm's professional services contract to serve as Special Projects Engineer, Zoning Board Engineer and Township Planner. Recent experience includes various Planning and Zoning Board reviews and Bulkhead reviews.

Pamela Hilla, PE, CME, CFM

Project Manager/Engineer

Senior Associate

Overview

- More than 20 years of civil/site and utility design engineering experience
- Responsibilities include preparing design documents, specifications, quantity takeoffs and cost estimates, and providing permitting and contract administration services.
- Areas of expertise include municipal roadway and drainage projects and water and wastewater infrastructure projects.
- Assists municipalities with floodplain reviews and mitigation, as well as community rating systems and ordinance development.

Work History

RVE experience: 2015 to present

Total experience: 22 years

Education

B.S., Civil Engineering, Lafayette College, 2002

Retaining Wall Design and Slope Stabilization Techniques Course

Stormwater Management for Engineers Course

Foundation Damage and Repair: Science, Materials and Techniques Course

Floodplain Manager Review Course

Certifications/Registrations

Professional Engineer – NJ

Certified Municipal Engineer - NJ

Certified Floodplain Manager - NJ

Representative Project Experience

Beach Haven West Sanitary Sewer Replacement Phase II, Stafford Township, NJ – Project Manager responsible for the replacement of sewer infrastructure at Beach Haven West in Stafford, NJ.

Improvements included the replacement of drainage catch basins, installation of new cross drains and repaving of the roadway from edge of pavement to edge of pavement. Tasks included the removal and replacement of approximately 7,085 LF of Asbestos Concrete Pipe (ACP) sanitary sewer main with 7,085 LF of eight-inch PVC SDR 35 for Stafford Township. Work includes the removal of 26 manholes and installation of 29 new manholes, installation of 205 new sanitary sewer laterals, dewatering, temporary by-pass pumping systems, and all other work required for the removal and replacement of the sanitary sewer main. The replacement of drainage catch basins, installation of eight-inch DIP and 12-inch DIP drainage pipe and milling and repaving of the above-mentioned roadways from edge of pavement to edge of pavement were also provided. Duration: November 2019 to July 2021.

Beach Haven West Sanitary Sewer Replacement Phase III, Stafford Township, NJ – Project Manager responsible for the replacement of sewer infrastructure at Beach Haven West in Stafford Township, NJ.

Improvements included the replacement of drainage catch basins, installation of new cross drains and repaving of the roadway from edge of pavement to edge of pavement. Tasks included the removal and replacement of approximately 7,152 LF of Asbestos Concrete Pipe sanitary sewer main with 4,540 Linear Feet of 8" PVC SDR 35 and 3,620 linear feet of 10" PVC SDR-35. Tasks also included the removal of 21 manholes and installation of 27 new manholes, installation of 209 new sanitary sewer laterals, dewatering, temporary by-pass pumping systems, and all other work required for the removal and replacement of the sanitary sewer main. The replacement of drainage catch basins, installation of eight-inch DIP and 12-inch DIP drainage pipe and milling and repaving of the above-mentioned roadways from edge of pavement to edge of pavement were also provided.

Eastern Division Treatment Plant No. 5 Media Replacement and Plant Upgrades, Manchester Township, NJ – Project Manager responsible for media replacement and plant upgrades to the Eastern Division Treatment Plant No 5 in Manchester, NJ.

Improvements included upgrading the media to Green Sand Plus for all four filter devices and pressure filter maintenance of underdrain system as required. Plans and specifications for the valve replacements and filter media replacement were prepared. RVE prepared and submitted to NJDEP Bureau of Water System for change in process for proposed media replacement and obtained necessary Bureau of Water System Engineering permits. Duration: August 2020 to June 2021.

Wilbur Avenue Watermain Extension Project, Manchester Township, NJ - Project Manager responsible for the Water Main Extension in Wilbur Avenue, Manchester Township, NJ. Improvements included a 2,100 LF of 12" Class 52 ductile iron pipe water main extension, including preparation of specifications, design plans, public bidding, and contract administration of the project.

NJEIT Water Main Replacement Project, Lakehurst Borough, NJ – Project Manager for the replacement of water main located throughout the Borough of Lakehurst, NJ. Tasks included providing design, permitting and construction administration, including providing full contract documentation, specifications appropriate for competitive bidding, solicitation and review of bids, review and approval of submittals, coordination of work, review and approval of payments/change orders, daily construction inspection, and project closeout. Improvements included the water main replacement at Poplar Street extending from Myrtle Street to Manapaqua Avenue (2,340 LF); Myrtle Street extending from Pine Street to Chestnut Street (1,950 LF); and Willow Street extending from Myrtle Street to Manapaqua Avenue (1,990 LF). The project was funded through the NJEIT Nano Loan Infrastructure Program, which is a drinking water loan for improvement to water supply systems serving populations less than 10,000.

Stephanie Cuthbert, PE, CME

Water/Wastewater Division Manager

Principal / Executive Vice President of the Water/Wastewater Division

Overview

- Over 30 years of engineering experience
- Responsibilities include the evaluation of water and sewer infrastructure, design and permitting of utility system improvements, development of utility system capital improvement plans and assistance in procurement services
- Manages and supports capital projects and Board matters as Client Representative
- Provides comprehensive project management services and expert testimony

Work History

RVE experience: 1993 to present

Total experience: 32 years

Education

B.S., Civil Engineering, Drexel University

Numerous Continuing Education Courses in Environmental Engineering and Compliance

Certifications/Registrations

Professional Engineer – NJ

Certified Municipal Engineer – NJ

New Jersey Air Auditing

Certification – Title V of Federal Clean Air Act

40-hour OSHA HazMat

Certification

OSHA Confined Space Certification

Representative Project Experience

Solid Waste Transfer Station, Lakewood Township, NJ – Engineering Department Manager responsible for engineering design services for a new Solid Waste Transfer Station, to be located on the grounds of the Public Works Complex in Lakewood, NJ. The two-story, 60' x 120' prefabricated building can process 200 tons of solid waste per day. Tasks included engineering support for compliance with the NJDEP Technical Manual for Solid Waste Transfer Station/Material Recovery Facility permits and approval and for a permit from the NJDEP Bureau of Hazardous Waste and Transfer Facilities.

Minor Disruption Permit and Landfill Closure Plan, Lakewood Township, NJ – Project Manager responsible for the development and approval of the Minor Disruption Permit and Closure Plan, as requested by the NJDEP. A site meeting was held to discuss the status of the landfill and its short- and long-term plans. Under Phase I of this project, soil borings were performed to determine the current conditions of the landfill and summarized the findings in a Soil Boring Plan. Groundwater sampling of the existing groundwater monitoring wells was required to ascertain the existing groundwater flow direction and constituents. A Methane Gas Testing Plan was also developed. Under Phase II, once the amount of soil cover was determined and the presence of groundwater or methane was understood, a Landfill Closure Plan was developed. This included a grading plan to incorporate a minimum of two feet of cover across the landfill, a Stormwater Control Plan, soil erosion plan and a site access plan. Tasks included project management and coordination services, the filing of permit applications and development of the Landfill Closure Plan.

Water Treatment Plant, Maple Shade Township, NJ – Professional Engineer responsible for the procurement of a design/build contractor for the construction of a new 3.4 MGD water treatment plant. Additional water and sewer infrastructure improvements, including upgrades to the Main Street Pump Station were included. The demolition of the old wastewater treatment plant was completed to create the footprint to construction the new plant. Conceptual designs were reviewed to provide a life-cycle cost analysis of the various processes to determine the best long-term value for the Township. Cost parameters evaluated include operation labor costs, energy costs, chemical costs and production efficiencies, such as backwash recovery percentage and iron sludge generation. Value engineering services were provided to eliminate requirements promulgated in the original RFP. The contract was negotiated successfully for \$9.98 million with the Layne Christensen Company to construct the state-of-the-art treatment plant. The water treatment plant is now producing high-quality finished water at significantly fewer operating costs than the old process. Once the new treatment plant became fully operational, the old process was demolished.

Utility System Evaluation and Capital Improvement Plan, Collingswood Borough, NJ – Project Manager responsible for the review of the existing water and sewer infrastructure. The intent of the evaluation was to assess the current condition of their aging infrastructure and develop a Capital Improvement Plan. The Borough was trying to evaluate the future of their system and the best options for ownership and/or operations. Tasks included the preparation of the requested report and Capital Improvement Plan outlining the estimated utility infrastructure costs in the upcoming years. The governing body utilized this information to assess the infrastructure and make necessary decisions regarding improvements.

Euclid Avenue Pump Station Improvements, Phase II, Haddonfield Borough, NJ – QA/QC Manager responsible for providing project oversight and coordination services for the improvements to the Euclid Avenue Pump Station. Tasks included the installation of a grinder, relocation of all electrical to ground level, installation of a permanent emergency by-pass pump, by-pass pump permanent connection to the existing force main and miscellaneous interior improvements.

Stormwater Inlet Inspection and Conditions Report, Haddonfield Borough, NJ – Project Manager responsible for the Borough-wide inspection of all stormwater inlets. Tasks included the inspection of each stormwater inlet and provided the findings in an inlet conditions report. The report will be used to evaluate the need for repair and/or replacement of these critical stormwater infrastructure components during the Borough's annual paving programs.

Steven J. Williams, NICET IV

Chief Observer

Overview

- Over four decades of field inspection experience
- Chief Inspector supervising the inspection of all construction projects, including road construction and reconstruction, stormwater management systems, water and sewer pipe installation, pump stations, water storage tanks, and park and recreation facilities
- Contract Administrator for all projects, responsible for the verification and approval of payment vouchers and construction change orders prior to submission for approval

Work History

RVE experience: 1984 to present

Total experience: 44 years

Education

B.S., Geology, Stockton State College

Certifications/Registrations

Underground Utilities Construction - Water and Sewer Lines Level IV (NICET IV)

Certified Municipal Inspection – NJ

Representative Project Experience

Beach Haven West Sanitary Sewer Replacement Phase I, Stafford Township, NJ – Chief Observer responsible for the replacement of sewer infrastructure at Beach Haven West in Stafford, NJ. Improvements included the removal and reconstruction of sanitary sewer system including manholes, sanitary sewer and laterals. Pavement restoration included trench restoration, followed by mill and overlay of the trench area. Tasks included the removal and replacement of approximately 7,407 LF of Asbestos Concrete Pipe sanitary sewer main with 4,415 LF of eight-inch PVC SDR 35 and 2,992 LF of 10-inch PVC SDR 35 for the Township.

Beach Haven West Sanitary Sewer Replacement Phase III, Stafford Township, NJ – Chief Observer responsible for the replacement of sewer infrastructure at Beach Haven West in Stafford Township, NJ. Improvements included the replacement of drainage catch basins, installation of new cross drains and repaving of the roadway from edge of pavement to edge of pavement. Tasks included the removal and replacement of approximately 7,152 LF of Asbestos Concrete Pipe sanitary sewer main with 4,540 LF of eight-inch PVC SDR 35 and 3,620 f of 10-inch PVC SDR-35. Tasks also included the removal of 21 manholes and installation of 27 new manholes, installation of 209 new sanitary sewer laterals, dewatering, temporary by-pass pumping systems, and all other work required for the removal and replacement of the sanitary sewer main. Also included will be the replacement of drainage catch basins, installation of eight-inch DIP and 12" DIP drainage pipe and milling and repaving of the above-mentioned roadways from edge of pavement to edge of pavement.

Sanitary Sewer Lagoon Crossings, Stafford Township, NJ – Chief Observer responsible for the installation of four sanitary sewer lagoon crossings using open cut and directional drill methods under various lagoons located in the Beach Haven West section of the Township of Stafford, NJ. Improvements included the replacement of sanitary sewer inverted siphons beneath the lagoon including the replacement of influent and effluent manholes, connecting to the existing sanitary sewer gravity system, in-place abandonment of the existing sanitary sewer inverted siphons, testing, and complete site restoration.

Beachwood Beach Shore Protection, Beachwood Borough, NJ – Chief Observer responsible for the installation of a new groin and rip rap along the southern edge of the existing pier and restoring the sand from the T-Dock to the existing beach in Beachwood Borough, NJ. Tasks included design, contract administration, construction observation and Army Corps and CAFRA permitting.

New Bathrooms at Veterans Park, Berkeley Township, NJ – Chief Observer responsible for the sanitary sewer extension at Veterans Park project located in Berkeley Township, NJ. Improvements included the extension of an existing on-site sanitary sewer system to service new and existing restrooms at Veterans Park with PVC sanitary sewer main and manholes, connection to an existing sanitary manhole, installation of sewer lateral stubs, and a two-inch water service.

Arverne Avenue Bicycle Path, Ocean Gate Borough, NJ – Chief Observer responsible for the curb and bike path construction along Arverne Avenue in Ocean Gate Borough, NJ. Tasks included contract administration and construction inspection during the project's construction phase. The project was funded through the NJDOT State Aid Fund.

1.5 MG Elevated Water Tank, Manchester Township, NJ – Chief Observer responsible for the construction of a new 1.5 million gallon fluted column welded steel elevated water storage tank and appurtenant facilities located at Harriet and Wilbur Avenue in Manchester, NJ. The new tank also included the foundation, tank structure and accessories, piping, valves, fittings, electric and controls, site improvements and all appurtenant equipment needed to properly install, test and place the new water storage facility into permanent service, including connection to the water distribution system. Tasks preliminary design, final documents and bidding services and construction phase services.

Municipal Experience

Section 3

On-Call Utility Consultant Contracts (Partial Listing)

Various clients throughout New Jersey

Alpha Borough

Borough Engineer supporting utility projects

RVE serves as Engineer to the Borough of Alpha in support of utility improvement projects. Recent projects include:

- Hydropillar Water Tank Design
- Water Treatment Plant Upgrades
- Water Treatment Plant Effluent Meter Vault
- Winter Street Sanitary Metering Station
- Edge Road Connector Water Utility Improvements
- System Meter Replacement and Fixed Based Antenna System
- Water Utility Asset Management Plan and GIS Services
- Service Line Replacement Program
- Frace Street Water Main Improvements
- Leak Detection Program

Bordentown Sewerage Authority

Consulting Engineer



Since 2005, RVE has served as Consulting Engineer responsible for engineering work required for the Authority's 3.0 MGD treatment plant and collection system that encompasses two municipalities. Recent projects include:

- Rising Road Pump Station Improvements
- Sylvan Glen Pump Station Improvements
- Mile Hollow Pump Station Improvements
- Administration Building Roof Replacement
- Rising Sun Meadows Wastewater Conveyance
- Energy Audit Improvements
- Stormwater Pollution Prevention Plan
- Wastewater Management Plan

Buena Borough Municipal Utilities Authority

Consulting Engineering Services

RVE serves as Authority Engineer to the Buena Borough MUA. Project experience includes:

- Belt Filter Press Rebuild
- Capacity Assurance Plan
- Emergency Sewer Repair at Route 54 and Route 40
- Local Limits Analysis for Zinc
- Louis Drive Sanitary Sewer Improvements
- Pump Stations #1, #2 and #3 and Grit System Improvements
- Septage Receiving Station Upgrades
- Utility System Analysis
- Wastewater Management Plan Amendment
- Wastewater Treatment Plant Upgrades

Ewing-Lawrence Sewerage Authority

Consulting Engineer



RVE serves as Consulting Engineer to the Ewing-Lawrence Sewerage Authority. Recent projects include:

- Scotch Road Relief Extension
- Groundwater Permit Termination
- Flow Capacity Study
- Fourth Street Pump Station Evaluation and Dual Force Main
- Sullivan Way Pump Station and Force Main
- Vehicle Storage Building
- Lower Ferry and Fackler Pump Station

On-Call Utility Consultant Contracts (Partial Listing)

Various clients throughout New Jersey

Jackson Township Municipal Utilities Authority

Authority Engineer Special Projects Engineer

Since 1992, RVE has served as Authority Engineer to the Jackson Township Municipal Utilities Authority. Recent experience includes:

- Manhattan Street Water Main Replacement
- Brookwood Sewer Evaluation
- Six Flags Wild Safari Camp Improvements

Jersey City Municipal Utilities Authority

Consulting Engineer



RVE has served as Consulting Engineer the Jersey City MUA since 2007. Recent experience includes:

- Boonton Reservoir Filtration Plant Feasibility Study
- Princeton Avenue Stormwater Improvements
- Brookdale Gatehouse Improvements
- Phase 2A Combined Sewer Rehabilitation
- Phase 5A Combined Sewer Rehabilitation
- Phase 7A Sewer and Water Main Replacements
- Phase 7B Sewer and Water Main Replacements
- Van Winkle Avenue Combined Sewer Outfall Rehabilitation
- East Side Pump Station Motor, VFD and Control Replacement
- Mina Drive and Pine Street CSO Modifications
- Trenton Street Sewer Extension and
- Sip Avenue Sewer Replacement
- East Side and West Side Pump Station Generators
- Summit Avenue Sewer Replacement
- Newark Avenue Sewer Replacement
- Mina Drive, 18th Street and Pine Street Pump Stations Improvements

Lacey Township Municipal Utilities Authority

Authority Engineer

Recent projects include:

- Meter Replacements, Phase 2
- Generator Replacement at the Treatment Plant
- Treatment Plant No. 2 Expansion
- Well NO. 1 Decommissioning
- Tank No. 2 Rehabilitation
- GIS Water Utility Infrastructure System
- Pole Barn Design and Construction
- Beach Boulevard Sewer Rehabilitation

Lakewood Township Municipal Utilities Authority

Engineering Consultant Services

Recent projects include:

- Well No. 2 Replacement
- Well No. 1 and 3 Disinfection Conversion
- Chlorine Conversion at NHA Water Treatment Plant
- Water Meter Replacement Program
- Yeshiva Ohr Hatorah Building Renovation
- County Line Manor Synagogue Addition
- Administration Building Office Expansion

Linden-Roselle Sewerage Authority

Authority Engineer

Recent projects include:

- Emergency Generator Switchgear Replacement
- Influent Header Modifications
- Thickening Facilities Upgrades
- Flood Mitigation Improvements
- Retrofit of UV Disinfection System
- Bar Screen Replacements
- Energy Consultation Services

On-Call Utility Consultant Contracts (Partial Listing)

Various clients throughout New Jersey

Little Egg Harbor Township Municipal Utilities Authority

Authority Engineer

RVE has supported the engineering needs of the Little Egg Harbor MUA since 1997. Recent projects include:

- Sea Oaks Water Tower Rehabilitation
- Well No. 5 Decommissioning
- Mathistown Tank Painting Inspection
- Mystic Island Water and Sewer Main Replacement
- Water/Sewer Service Area Map Updates
- Water Allocation Permit Renewal
- 2016 Water and Sewer Emergency Repairs
- Twin Lakes Blvd Water & Sewer Replacement
- NJEIT 2014 - Well No.12 WTP @ 300 Mathistown Road Upgrades
- NJEIT 2014 - Wells No. 7-13 Water Treatment Plant
- New Garage Building
- Backup Well #13 & Building Expansion
- Construction of Well No 14
- Pump Station No. 3 Upgrade

Lower Township Municipal Utilities Authority

Authority Engineer

RVE serves as Authority to the Lower Township MUA. Project experience includes:

- Waste Sludge Thickener Project
- Town Bank Water Main Improvements
- USDA East Villas Water Main Improvements
- Millman Water Tank-USDA Application
- Mechanical & Electrical WWTP Upgrades
- Well #8 and Water Allocation Permit Modification
- Secondary Clarifier Upgrade Project
- Wissahickon Avenue Sanitary Sewer Rehabilitation
- LTMUA Bayshore Rd. Water Main Replacement
- Wastewater Treatment Plant Evaluation & Capital Improvement Plan
- LTMUA Sewer Interceptor Main Rehabilitation
- WWTP Roof Replacement Project
- Schellenger's Landing Sewer Reconstruction

Manchester Township

Alternated Water and Sewer Engineer

Recent experience includes:

- North Buckingham Drive Water Main Replacement
- Treatment Plant Upgrades at Well No. 4
- Water Main Replacement Installation of Auto Meter Reading System/Replacements
- Painting of the Route 37 1.0 MG Water Tank
- Eastern Service Area Treatment Plant #5 Media Replacement
- Manchester Interconnect
- Wells No. 7 & 8 Radium Removal System
- Western Service Area Meter Replacement Project

Maple Shade Township

Utilities/Recreation Engineer



Recent experience includes:

- Sanitary sewer interceptor improvements
- Smoke testing and televising of sewer mains
- Inflow and Infiltration Study
- Combined sewer overflow (CSO) remediation
- Design build procurement documents for 3.4 MGD water treatment plant
- Wastewater treatment plant re-rating permitting
- Wastewater effluent—beneficial water reuse project
- Water Reuse project to irrigate Pennsauken Country Club and Woodlawn Recreation Complex
- Main Street Pump Station force main corrosion evaluation
- Euclid Avenue Pump Station upgrade and force main replacement using directional drill technology

On-Call Utility Consultant Contracts (Partial Listing)

Various clients throughout New Jersey

Township of Neptune Sewerage Authority

Authority Engineer

Recent experience includes:

- Headworks Improvements – Train 1, 2 and 3
- Electrical Upgrades at the Wastewater Treatment Plant, Phase 2
- Train 3 Upgrades
- Wastewater Treatment Plant Odor Control Upgrades
- Air Permitting Services
-

Town of Phillipsburg

Wastewater Engineer

Since 2006, RVE has provided sewer and wastewater engineering services under the firm's professional services contract. In this time, we have completed more than 35 utility improvement projects, including:

- Wastewater Treatment Plant Upgrade & Outfall Relocation
- Wastewater Treatment Plant Expansion
- Riverside Way Pump Station
- Sanitary Sewer Repairs - South Main Street
- East & West Digester Tank Covers
- Walters Park & Primary School Recreational Improvements
- Wastewater Management Plan
- EPA Evaluation Report Inflow & Infiltration Study
- Sewer Investigation Region 3 to Mitigate Extraneous Flows
- Riverside Way PS Force Main Lining & PS Improvements
- Wastewater Treatment Plant Roof Replacements
- WWTP Solids Handling & Odor Control Study
- Sewer Main Replace - Autumn Ridge Connection
- Replacement of Influent Pumps A & B and Water Utility Pump
- NJEIT UV Disinfection & Superstorm Sandy Repairs
- Blower Replacement at Wastewater Treatment Plant
- Chemical Feed System Modifications
- WWTP Boiler Replacement
- Phillipsburg Plant Upgrades - Slag Material Waste Classification

Roseland Borough

Water and Sanitary Engineer

Since 2016, RVE has served as the Borough's Water and Sanitary Engineer. Recent projects include:

- Lead and Copper Sampling Plan
- CCTV Inspections
- NJDEP Potable Well Review
- GIS Utility Mapping
- EPA Risk and Resiliency Assessment
- Sanitary Sewer Evaluation
- Water System Infrastructure Assessment, Asset Management Plan
- 1 MG Ground Storage Tank Painting
- Water Utility Improvements

Stafford Township

Consulting Engineer – Water/Sewer Utility

Recent experience includes:

- Bay Avenue Pump Station Upgrades
- Beach Haven West Sanitary Sewer Replacement
- Beach Haven West Treatment Plant Media Replacement
- Cedar Bonnet Island Water Main Replacement
- Charles Boulevard Water Main Replacement
- Directional Drilling of Beach Haven West Lagoons
- Golfview Drive Pump Station Upgrades
- Howard Drive and Kevin Lane Sanitary Sewer Upgrades
- Jane Drive Pump Station Upgrade
- Jonathon Drive Water Main Replacement
- New Pole Barn for the Water and Sewer Department
- Replacement of Water Main on Millcreek Road
- Replacement of Water Main on Paul Boulevard
- Sanitary Sewer Lagoon Crossings
- Stafford Avenue Treatment Plant Media Replacement
- Stafford Avenue Water Treatment Plant Generator Replacement
- Stafford Avenue Water Tower Rehabilitation
- Walter Boulevard Water Main Replacement
- Water System Hydraulic Model Phase 1 Fawn Lakes
- Water Treatment Plant and Well House No 7 Roof Replacement

On-Call Utility Consultant Contracts (Partial Listing)

Various clients throughout New Jersey

Washington Township (Gloucester) Municipal Utilities Authority

Authority Engineer

Recent projects include:

- Administrative Office Building Security Upgrades
- American Boulevard Tank Painting
- Asset Management Plan
- Bryant Road Tank Painting
- Delsea Drive Pump Station Improvements
- Delsea Drive Pump Station Improvements
- Egg Harbor Road Water Tank PaintingEmergency Resin Replacement for Well No. 18.
- Five Points Water Tank Painting
- Forrest Drive Pump Station Replacement
- GIS Water and Sewer Map Updates
- Hartford Road Sanitary Sewer Replacement
- Hurffville Road Water and Sewer Main Replacements
- Long Bow Drive Sewer Main Replacement
- Replacement of Well Houses No. 2 and 8
- Valley Green Pump Station Force Main Extension
- Washington Square Urban Renewal Project
- Well Houses No. 2 and 8 Replacement
- Whitman Drive Water and Sewer Main Replacements

On-Call Utility Consultant Contracts (Partial Listing)

Various clients throughout Pennsylvania, Maryland and DC

Blairsville Municipal Authority

General Engineering Consultant

Recent projects include:

- NPDES Permit Renewal
- Liberty Street Sanitary Sewer Improvements
- Sulphur Creek Hillside Stabilization
- Long-term CSO Elimination Analysis
- East Campbell Street Drainage
- DEP Study for the Removal of Inflow and Infiltration

Catasauqua Borough

Borough Engineer

Since 2019, RVE has served as Sewer Engineer responsible for providing general engineering services and design, permitting, grant assistance and construction phase services for various capital improvement projects.

Recent projects include:

- Race Street Water and Sewer Improvements
- Water Interconnection Replacements
- Wastewater Treatment Plant Influent Pump Replacement
- Hydrant Flushing Program
- Operations Building Roof Replacement
- Water Treatment Plant Improvements
- Wastewater Treatment Plant Electrical Upgrades
- Act 57 Study

Chester Water Authority (CWA)

On-Call Engineering Consultant

Recent projects include:

- Sullivan Booster Station
- Distribution Headquarters Assessment
- Sweeny Property Water Main Relocation
- Bethel Avenue Water Main Renewal
- Installation of Remote Shutoff Valves
- Octoraro Reservoir Intake Sluice Gate Replacement
- Plant Intake Valve Refurbishment
- Replacement of the Concord Booster Pump Station
- Standard Water Main Drawing and Standard Review

Delaware County Regional Water Authority (DELCORA)

On-Call Engineering Consultant



Since 2015, RVE has served as Engineering Consultant providing design and engineering services for various capital improvement projects. Most work performed by RVE pertained to the elimination of Combined Sewer Overflows (CSOs), sewer separation projects and feasibility studies. Recent projects include:

- Avenue of the States CSO Elimination Project
- Beech Street Pump Station
- Kimberly Clark Water Distribution Upgrades
- Long Term Control Plan Field Survey
- Private Treatment Plant Feasibility Study
- Ridley Park Interceptor Sanitary Sewer Study
- Townsend Street CSO Elimination Project

Hellertown Borough Authority

Consulting Engineer

Recent projects include:

- Cherry Lane Generator Replacement
- Hellertown Dam Structural Assessment
- Water Treatment Plant DRBC Docket Renewal Application
- Division Street Generator Replacement

On-Call Utility Consultant Contracts (Partial Listing)

Various clients throughout Pennsylvania, Maryland and DC

Township of Falls Authority

Authority Engineer



RVE serves as Authority Consultant to the Township of Falls Authority. Recent projects include:

- Act 57 Study
- Chapter 94 Reporting
- Fallsington Water Interconnections
- Headley Pump Station Generator and Fence Replacement
- Inflow/Infiltration Project
- Old Bristol Pike Sewer Investigation
- Oxford Valley Pump Station Pipe Resizing
- Penn Village Pump Station Bypass
- Penns Place Pump Station Upgrades
- Physical Needs Assessment
- Rock Creek Run Pump Station Improvements
- SCADA Design
- Twin Oaks Interconnection Improvements
- Water Hydraulic Modeling
- Water Main Lining Projects

North Fayette County Municipal Authority

Authority Engineer

RVE has served as Authority Engineer since 2021 responsible for various capital improvement projects, including the Porter Hill Water Treatment Facility.

Philadelphia Water Department

Water Main, Sewer and Stormwater Capital Program

The Philadelphia Water Department retained the services of RVE to serve as one of its civil engineering consulting firms. RVE was tasked with providing engineering services for the water main, sanitary sewer and stormwater infrastructure capital replacement program to supplement the in-house engineering staff of the Capital Improvement Program. Recent projects include:

- S-40816-RDG: Weikel, Witte and Gaul Streets
- S-40907-RD: Corlies, Etting, Hollywood, Marston, Napa, and Stanley Streets
- S-40858-RDG: McClellan, Watkins, and Fernon Streets
- W-20532-DG: Cedar Avenue, Redfield Street and Webster Street
- S-41033-RDG: Parkside Avenue, Paxon Street, Viola Street and Creighton Street
- W-20596-D: Diamond Street, Franklin Street, Norris Street, 7th Street and Cecil B. Moore Avenue

Phoenixville Borough

Water/Sewer Engineer

Recent projects include:

- Digester #1 Improvements
- Digester Cover Replacement
- Emergency Generator at Water Treatment Plant
- Water Plant Roof Replacement Project
- Sewer Tapping Study
- Water Treatment Plant Intake Replacement

On-Call Utility Consultant Contracts (Partial Listing)

Various clients throughout Pennsylvania, Maryland and DC

Baltimore City

On-Call Engineering and Design Services

RVE was retained by the City of Baltimore, Department of Public Works, to perform On-Call Water Design and Engineering Services for the horizontal water utility section. Services include the review of available information, project management, contract administration, field investigation, utility surveying, design of water main replacement and/or rehabilitation, re-design of shelved projects, re-signing and re-sealing shelved projects, emergency services, post award and construction management services including inspection, preparation of reports and contract documents, including plans, specification, construction cost estimates, permit applications, right of ways etc. for city, state, and or federal funded water main projects.

Baltimore County

On-Call Engineering Services for Pumping Stations

The Joint Venture of Remington & Vernick Engineers and EBA Engineering, Inc. (RVE-EBA) was retained to provide professional engineering services for Tier 1 under Project No. 2021-02, On-Call Engineering Services for Pumping Stations Tier 1 and Tier 2 for the Baltimore County Department of Public Works and Transportation, Engineering and Construction Bureau. RVE-EBA is currently providing services for on-call engineering for sewer pumping stations, water pumping stations, sewer force mains and appurtenances. Services include civil, structural, mechanical and electrical engineering design applicable to pumping stations and related facilities of varied configurations and pumping capacities.

Washington Suburban Sanitation Commission (WSSC Water)

Sewer Replacement and Rehabilitation Basic Ordering Agreement (BOA)

Under Contract No. PM0004A18, The Washington Suburban Sanitary Commission (WSSC) has procured a BOA with RVE to provide engineering services for the design of pipelines and manholes (assets) in the Environmental Sensitive Areas (ESA) of WSSC service areas in Prince George's and Montgomery Counties, Maryland. The designs are for: protection of exposed assets; repair, replace, rehab and relocation of assets; Natural Resources Inventory Plan (i.e., Forest Stan Plan, Forest Conservation Plan, Wetlands and its buffers impact maps); stream stabilization; access haul roads;

and staging areas. The rehabilitation designs include CCTV review, field investigation and manhole inspection, traffic control design, permit identification, land surveying (for relocation of asset), rehabilitation recommendations, stakeholder's notifications, the acquisition of Permits, preparation of Bid-Ready documents and Community Outreach documents.

To date, RVE has been assigned 10 Task Orders to provide Phase I Engineering Services for sanitary sewer system rehabilitation in ESAs and Residential Road Right-of-Ways. The purpose of the Phase I services is to collect data, develop a Preliminary Design Plan Layout, complete Community Outreach requirements and identify the Scope of Work (SOW) for Phase II design of the project.

Water/Wastewater Engineering Services

Under Contract No. 16654, WSSC has procured a BOA with the JV of RVE-EBA to complete asset armoring and rehabilitation design as well as perform engineering services supporting projects and initiatives of the Commission including but not limited to urgent collection and distribution system asset rehabilitation designs, inspections, assessments and evaluations. Under this BOA, RVE-EBA is currently providing:

- Overall support through project management
- Monthly reporting/data management
- Design services for the rehabilitation of water distribution and sewer collection assets
- Engineering and technical support services
- Engineering and technical emergency support services

Municipal Engineering and Planning Services

Jersey Shore Communities

Aberdeen Township

Appointed as Special Projects Engineer and Township Planner

Recent projects include:

- Guisti Park Improvements Affordable Housing Planning Services
- R-50 Rezoning
- Guisti Park Improvements
- Marijuana Ordinance and Research
- Zoning Ordinance Research and Preparation for proposed Yeshiva Gedolah Facility

Absecon City

City Engineer and Planner Zoning Board Engineer and Planner

Recent projects include:

- Absecon Creek Dredging Program
- Absecon Creek Waterfront Improvements*
- Absecon Estates Drainage Study
- Annual Road Program
- Business District Streetscape, Phases I-III
- City Hall Retaining Wall Replacement
- City Hall ADA Accessible Ramp Installation
- Crestview Avenue Pedestrian Safety Improvements
- CDBG Streetscape Improvements, Phase III
- Infrastructure Mapping Updates
- Meadowview Avenue Sanitary Sewer Rehabilitation
- Municipal Building Emergency Generator Replacement
- New Fire Department Facility
- New Jersey Avenue Intersection Improvements*
- Pitney Park Football Field Reconstruction
- Pitney Park Tennis Court Resurfacing
- Pitney Road Pedestrian Safety Improvements
- Shore Road Flood Mitigation Improvements

**NJSME Project of the Year Award Winner*

Atlantic City

Capital Projects Engineer

Recent projects include:

- Altman Field Expansion Remedial Investigation
- Annual Tax Map Updates
- Atlantic Avenue Road Diet
- Atlantic Avenue Street Tree Initiative
- Atlantis Avenue Canal Structural Evaluation
- Baltic Avenue Paving
- Baltic Avenue Drainage Canal Improvements*
- Bar Screen Replacement at Fisherman's Park Pump Station
- Department of Public Works Emergency Generator Replacement
- Dr. Martin Luther King Jr. Boulevard Design Improvements
- Fisherman's Park Pump Station Upgrades
- Maine Avenue Promenade Enhancements
- PAL and All Wars Memorial Building Emergency Generator Improvements
- Replacement of Ohio Street Bridge
- Various UST Removals

**NJSME Project of the Year Award Winner*

Barneget Township

Appointed as Tax Map Maintainer

Recent projects include:

- New Water Tower
- Englewood Sewer Repair
- Tax Map Updates and Revisions
- GIS Updates in conjunction with Tax Map Maintenance
- As Built GIS Stormwater System Mapping

Beachwood Borough

Appointed as Municipal Engineer, Municipal Planner and Land Use Board Planner

Recent projects include:

- Aeration System Inspection and Cleaning
- Beachwood Beach Shore Protection
- Borough Hall Roof Replacement
- Dock Reconstruction at Marina
- Forecast Road Extension
- Professional Floodplain Services
- General Reexamination of the Master Plan

Municipal Engineering and Planning Services

Jersey Shore Communities

- GIS Water Utility Infrastructure System Mapping & Asset Management Plan for NJ WQAA Compliance
- HVAC Control System Replacement
- Installation of a Temporary Iron Removal Treatment System for the Beachwood Water Treatment Plant
- NJDOT Reconstruction of Various Roads
- Police Department 15-ton Condensing Unit Replacement
- SCADA System Upgrades
- Seaman Avenue Drainage Improvements
- Solar Panel Installation
- Sunset Road Extension
- Various Road and Drainage Reconstruction
- Water Main Replacement at Various Locations
- Water Treatment Plant Replacement Project
- Water Treatment Plant Replacement Project
- Wave Street Water Main Reconstruction
- Well No. 6 Rehabilitation

Belmar Borough

Appointed as Borough Engineer and Planner

Recent projects include:

- 7th Avenue Redevelopment
- NJDEP Beach Access Permit
- Piling and FRuel Dock Replacement
- New Restroom Building at the Boardwalk
- MS4 Reporting and Compliance
- Third Avenue Restroom Seasonal Trailer
- Marina Improvement Plan
- Silver Lake Gazebo Structural Evaluation and Reconstruction
- CDBG Grant Coordination Services

Brigantine City

Capital Projects Engineer

Recent projects include:

- Board of Elections Mapping
- Brigantine Boulevard Resurfacing
- Brigantine Boulevard Shoreline Stabilization
- Brigantine Library Window Replacement
- Brigantine Salt Storage Building
- Lighthouse District Streetscape Improvements
- Post Sandy Planning Grants – Bayfront and Brigantine Avenue
- Utility Infrastructure Assessment and Rate Valuation

Buena Borough Municipal Utilities Authority

Authority Engineer

Recent projects include:

- Pump Stations #1,#2 & #3 and Grit System Improvements
- New Wastewater Treatment Plant
- Septage Receiving Station Upgrades
- Belt Filter Press Rebuild
- Well No 3 Emergency Generator Replacement

Cape May City

Project Engineer

Recent projects include:

- East Lyle Lane Site Improvements and Rotary Park Renovations
- Canning House Lane Underground Storage Tank Removals
- Washington Street Sanitary Sewer Rehabilitation
- General Maintenance Permit for Beaches
- Washington Street Mall Redevelopment*
- Cape May Bulkhead Elevations
- Tax Map Maintenance
- City Hall Roof, Window and Pointing Renovations
- USDA Emergency Generator Replacement at Wells #5 and #7
- Well #8 Improvements
- Wind Turbine Foundation Design

**NJSME Project of the Year Award Winner*

Egg Harbor City

City Engineer Land Use Board Engineer and Planner

Recent projects include:

- Ambulance Building Redevelopment Area Support Services
- Annual Road Program
- Annual Tax Map Maintenance Services
- Archway Greene Park
- Atlantic Avenue Transit Path Extension
- CDBG Reconstruction of London Avenue
- Diesterweg Street - Phase III Inspection
- Egg Harbor City Park Dam Inspection
- Egg Harbor North Redevelopment Assessment
- General Master Plan Reexamination

Municipal Engineering and Planning Services

Jersey Shore Communities

- HVAC Improvements at J Building
- I-Bank Stormwater Improvements
- Lake Avenue ADA Improvements
- Manhole Replacement - 9th Terrace and Beethoven Street
- Multi-Jurisdictional All Hazards Mitigation Plan
- Municipal Building ADA Improvements
- Neighborhoods of Cedar Creek Improvements
- NJDEP Stormwater Infrastructure Mapping
- Reconstruction of Chicago Avenue
- Reconstruction of Route 30 - Utility Reconfiguration
- State Aid and Grant Applications

Hamilton Township

Township Engineer, Alternate Township Engineer, Township Traffic Engineer, Tax Map Maintainer, Zoning Board Engineer and Alternate Planning Board Engineer

Recent projects include:

- Forestry Management Plan
- Annual Road Program
- Liepe Tract Hockey Rink Reconstruction
- Tanglewood Drive Culvert Replacement
- UST Investigation and Closure

Lacey Township

Special Projects Engineer

Recent projects include:

- Bamber Lake Basketball and Tennis Court Reconstruction
- Bayside Beach Maintenance Dredging
- Clairmore Avenue Drainage Study
- Department of Public Works UST Closure Report
- Dredging of Wordens Oyster Pond
- Feasibility Study - Gravity Sanitary Sewer Extension
- Good Luck Cemetery Expansion
- Hancy's Pond Maintenance Dredging
- Hancy's Pond Maintenance Dredging
- Hancy's Pond Shoaling Issues
- Hebrew Park Pickleball Courts
- HVAC Building Control System Replacement
- Monument and Dog Park at Gille Park
- MS4 Consulting Services
- Stormwater Pollution Prevention Plan (SPPP) and Stormwater Management Plan (SWMP)
- Stout's Creek Maintenance Dredging

- Walkway at Bud Mazera Park
- Worden's Oyster Pond Maintenance Dredging

Little Egg Harbor Township

Special Projects Engineer, Zoning Board Engineer, Township Planner and Planning Board Engineer

Recent projects include:

- Bulkhead Reviews
- New Municipal Building
- General Engineering and Planning Services
- Reexamination of the Master Plan
- Affordable Housing Assistance

Little Egg Harbor Municipal Utilities Authority

Authority Engineer

Recent projects include:

- Pump Station No. 3 Upgrade
- Sea Oaks Water Tower Rehabilitation
- Mystic Islands Water and Sewer Infrastructure Improvements
- Mathistown Tank Painting Inspection
- Well No. 5 Decommission
- Backup Well #13 & Building Expansion
- Construction of Well No 14
- Water/Sewer Service Area Map Updates
- Water Allocation Permit Renewal
- New Garage Building

Longport Borough

Borough Engineer

Recent projects include:

- 23rd Avenue Utility Services
- 36th Avenue Bayfront Park NJDEP Permitting
- Amherst Avenue Raised Crosswalks
- Atlantic Avenue Reconstruction
- Bayfront East Traffic Calming Improvements
- Bike Lane Improvements to Atlantic Avenue
- Fire House Floor Resurfacing
- Flood Elevation Certificates
- Monmouth Avenue Reconstruction
- Lead Service Line Replacement Program
- Point Park Wall Improvements
- Police Holding Cell Upgrades
- Stormwater Outfall Mapping
- Stormwater Report and Certification
- Tennis and Basketball Courts Resurfacing

Municipal Engineering and Planning Services

Jersey Shore Communities

- Vacant Land Assessment Mapping
- Water Tank Rehabilitation
- Winchester Avenue Drainage Improvements - Phase 1

Lower Township Municipal Utilities Authority

Authority Engineer

Representative project experience includes:

- Star Avenue Sanitary Main Improvements
- Sewer Interceptor Main Rehabilitation
- Schellenger's Landing Sewer Reconstruction
- Cleaning and Video Inspection of Sewer Interceptors
- Odor Control Project
- Wastewater Treatment Plant Evaluation and Recommendations
- Wastewater Treatment Roof Replacement
- MEP Upgrades at the Wastewater Treatment Plant
- Iron Sequestering System Installation
- Bayshore Road Water Main Replacements
- East Villas Water Main Improvements
- Roadway Restorations for Various Water Mains
- ADA Analysis for Administrative Building

Margate City

City Engineer

Planning Board Engineer

Recent projects include:

- Annual Road Program
- Amherst Avenue Promenade
- Atlantic Avenue Road Diet*
- Atlantic Avenue Bike Lane Painting
- City wide Traffic Study
- Flood Warning Response Plan
- Lead Service Line Replacements
- Lucy the Elephant Visitor's Center
- Minnie Creek Drainage Analysis
- Municipal Building Office Improvements
- New Public Works Building
- Pickleball Court Resurfacing
- Public Works Facility Master Plan
- Reconstruction of Amherst Avenue
- Reconstruction of Thurlow Avenue
- Reconstruction of Winchester Avenue
- Redevelopment of Well No. 9
- Sigmund S. Rimm Recreational Complex Walkway

Replacement

- Tax Map Reevaluation
- Various Bulkhead Reviews
- Ventnor Avenue Parking Lot Improvements
- Washington Avenue Streetscape Conceptual Plan
- Water Main Reconstruction at Benson and Winchester Avenues
- Water System Asset Management Plan

**NJSME Project of the Year Award Winner*

Middle Township

Special Projects Engineer and Township Engineer

Recent projects include:

- Reconstruction of Hand Avenue
- Avalon Manor Fishing Pier Installation
- Bike Path North Extension
- Municipal Building Roof Replacement
- Municipal Public Access Plan

Neptune Township

Township Engineer

Recent projects include:

- Bert Willis Park Improvements
- GIS Stormwater Mapping

Ocean City

Tax Map Maintenance

Recent projects include:

- 2023-2024 Tax Map Maintenance

Ocean Township (Ocean County)

Special Projects Engineer and Planner, Water/Sewer Engineer and Planning Board Conflict Engineer

Recent projects include:

- 8th Street Elevated Storage Tank Water Tower Rehab and Repair
- Bay Parkway Extension
- Bayshore Pump Station Replacement
- Birdsall Street Hydropillar Rehabilitation and Repairs
- Diamond Drive Pump Station Upgrades

Municipal Engineering and Planning Services

Jersey Shore Communities

- Dock Avenue Pump Station Replacement
- Economic Redevelopment Plan
- Englewood Sanitary Sewer Repair
- EPA Water Utility Risk and Resilience Assessment
- Flood Mitigation Plan
- GIS Water Utility Infrastructure System Mapping and Asset Management Plan
- HVAC Evaluations
- Master Plan Re-Examination
- Pebble Beach Water Treatment Plant
- Ocean Township Transportation Study
- Route 532 Water Treatment Plant Rehabilitation
- Senior Center Design
- Waretown Water Distribution System Model
- Water Utility Cybersecurity Assessment Plan
- Water Utility Cybersecurity Assessment Plan

Point Pleasant Borough Borough Engineer

Recent projects include:

- Boat Point Drive Road Raising and Drainage Improvements
- Boulton Avenue Reconstruction
- Bradley Road and Meadow Point Road Pump Stations
- Canal Drive Roadway Improvements
- Crestview Terrace Roadway Reconstruction
- DPW Roof Replacement
- Dorsett Dock Road Curb and Sidewalks
- Drainage Improvements at Beaver Dam Road to Laguna Drive
- Herbertsville Road and Maxon Avenue Sidewalk Improvements
- Mossbank Road Roadway and Parking Improvements
- Municipal Building Roof Replacement
- Parking Lot and Walkway Improvements
- Reconstruction of Summit Drive
- Riverfront Park Site Development
- Rue Mirador Roadway Construction
- School Street Sidewalk Improvements
- Watershed Improvement Plan
- Well No 9 Rehabilitation
- Tax Map Updates

PLUMSTED TOWNSHIP

Tax Map Engineer

Recent projects include:

- Development of a new, New Jersey Certified Digital Tax Map

Sea Bright Borough

Consulting Borough Engineer (Pool)

Recent projects include:

- 2021/2022 NJDOT Local Aid Projects
- Donovan's Reef - Sanitary Sewer Lateral Improvements

Seaside Park Borough

Special Projects Engineer

Recent projects include:

- 12th and 13th Avenue Roadway Reconstruction
- 14th Avenue Bulkhead and Park Improvements -
- Boardwalk Reconstruction
- Community Rating System 5 Year Cycle
- Flood Hazard Risk Reduction/Resiliency Grant Program, Wave Energy Dissipation/Flood Mitigation
- G Street Roadway Reconstruction
- H Street Roadway Reconstruction
- K Street Roadway Improvements
- Hurricane Sandy - Infrastructure Assessment and Recovery Planning
- Lead Service Line GIS
- CRS Recertification
- Decatur Avenue Water Tower Rehabilitation
- Marina Shoreline Stabilization
- New Water Supply Well - Well Replacement
- NJDOT Route 35 Reconstruction
- Ocean Avenue Water Main Replacement
- Public Works Building Reconstruction
- Reconstruction of 9th Avenue
- Reconstruction of Administration Building
- Reconstruction of the Oceanfront Sand Dunes
- Reconstruction of Parking Lots 1, 2 and 3
- Roof and Window Upgrades at Public Safety Building
- Roof Installation and Exterior Retrofit at Municipal Buildings
- Seaside Park Marina Reconstruction
- Superstorm Sandy Damage Assessments
- Tennis and Basketball Courts Reconstruction

Municipal Engineering and Planning Services

Jersey Shore Communities

- Tax Map Maintenance and GIS Application Services
- Water and Sewer Main Installation
- Water and Sewer Main Replacement Phase 3A
- Water Tank Repainting
- Water Utility Asset Management Plan
- Well No. 10 Electrical System Reconstruction
- Well No. 10 Treatment Facility

Ship Bottom Borough

Special Projects Engineer

Recent projects include:

- EPA Risk and Resilience Assessment and Emergency Response Plan

Toms River Township

Pool Inspection and General Engineering Services

Planning Board Special Projects Engineer

Board of Adjustment Engineer

Recent projects include:

- Adams Avenue Roadway Infrastructure
- Additional Parking at Girls Softball Complex
- Gardens at Pleasant Plains Drainage and Paving
- Girls Softball Complex
- Community Medical Center
- North Beach Road and Drainage Repairs
- Ortley and North Beach Storm Pipe Replacement
- Ortley Beach Road Repair - Base Maps, Verification and Storm Drainage
- Ortley Road Reconstruction
- Parking Garage Electric Vehicle Charging Stations
- Windsor Park Area Water Main and Drainage Improvements

Ventnor City

Capital Projects Engineer

Recent projects include:

- Dorset Avenue Sanitary Sewer Main Replacement
- Fulton and Calvert Avenues and Bulkheads – Survey Services
- Municipal Building HVAC Improvements
- Municipal Building Waterproofing Repairs
- Reconstruction of Burke Avenue
- Reconstruction of Newport Avenue
- Somerset Avenue Sanitary Sewer Replacement
- Surrey Avenue Water Tower
- Tax Map Maintenance

- Ventnor Avenue Signal Synchronization
- Winchester Avenue Drainage Improvements
- Winchester Avenue Sanitary Sewer Repairs
- Upgrades to Well No. 5

Wall Township

Planning Board Engineer

Zoning Board Engineer

RVE provides engineering services to the Township's Planning and Zoning Board under its professional services contracts as Planning Board Engineer and Zoning Board Engineer. Additional tasks include water and sewer engineering services.

West Cape May Borough

Municipal/Board Engineer

Recent projects include:

- 1st Avenue Reconstruction
- 4th Avenue and West Drive Pump Station Generator Replacement
- 5th Avenue Reconstruction
- 6th Avenue USDA Grant Application
- Bayshore Road Storm Drainage Improvements
- Borough Hall ADA Upgrade
- Firehall HVAC Renovation
- Leaming Avenue Bike Lane
- Morrison Avenue Reconstruction
- Myrtle Avenue Sanitary Sewer Extension
- Park Boulevard Bike Lane
- Public Works Building Renovations
- Second Avenue Reconstruction
- West Cape May to Cape May Pedestrian and Bicycle BridgeWest Cape May School Playground Improvements

Wildwood City

Municipal Engineer

Recent projects include:

- Glenwood Avenue Beach Access Ramp Replacement
- Glenwood Avenue Bulkhead Replacement
- Manhole repairs
- Municipal Building Roof Overlay

Municipal Engineering and Planning Services

Jersey Shore Communities

- Neptune Avenue Bulkhead and Drainage Improvements
- Maple Avenue Sanitary Sewer Repairs
- Reconstruction of Poplar Avenue
- Stormwater Permitting

West Wildwood Borough

Municipal Engineer

Recent projects include:

- Glenwood Avenue Beach Access Ramp Replacement
- Glenwood Avenue Bulkhead Replacement
- Manhole Repairs
- Municipal Building Roof Overlay
- Neptune Avenue Bulkhead and Drainage Improvements
- Maple Avenue Sanitary Sewer Repairs
- Reconstruction of Poplar Avenue
- Stormwater Permitting

Wildwood City

City Engineer

Recent projects include:

- Atlantic Avenue Lane Configuration Study
- Beach Bike Path Feasibility Study
- Boardwalk Reconstruction
- Boardwalk Structural Inspection
- Cedar Avenue Boardwalk Ramp Improvements
- Cedar Avenue Water and Sewer Improvements
- Department of Public Works Yard RA-RAR-RAO
- Fire Department ADA Improvements and Renovations
- LSRP Services for Municipal Landfill
- Magnolia Avenue Sewer Improvements
- Maxwell Field Center Improvements
- Municipal Building Remediation
- Municipal and Department of Public Works Parking Lot Improvements
- Otten's Harbor Flood Mitigation Project
- Park Boulevard Streetscape
- Rio Grande Pump Station UST Site Investigation
- Susquehanna Avenue Bulkhead Replacement
- Susquehanna Avenue Sewer Improvements
- Water Tank Improvement Program
- Watershed Master Plan

Award Winning Projects

Various clients in New Jersey

RVE's project portfolio includes dozens of award-winning projects for municipal and infrastructure clients throughout New Jersey. These project reflect our commitment to public health, safety, and welfare by way of designing projects or implementing programs which are of an outstanding nature. These projects range from roadway, utility, park and recreation and GIS mapping. Below is an overview of our recent project awards: Award programs are facilities by the American Council of Engineering Companies (ACEC), the New Jersey Society of Municipal Engineers (NJSME) and the American Academy of Environmental Engineers.

Community Center Improvements, Pine Hill, NJ

RVE provided professional engineering services for the Pine Hill Community Center Improvements, including the preparation of base plans, preliminary engineering and design for mechanical, electrical and plumbing, final design, advertisement/bid support, construction observation, contract administration and asbestos testing. The project consists of the abatement of the mercury contaminated gymnasium flooring, the abatement of VAT flooring, the replacement of the gymnasium bleachers, the replacement of the gymnasium scoreboard, upgrading electrical and HVAC systems throughout various areas of the community center, upgrades to the community center security systems, renovations and ADA accessibility improvements at the community center building entrances, the removal of existing wood framed GWB wall and wood door within the community room, the removal of existing cabinets and sink within the kitchen, various finish improvements, a new door at the locker room vestibule, complete renovations of the toilet rooms, the removal of existing water fountain and installation of new water bottle filler, the renovation of the main entrance storefront and vestibule, the repainting and repairs of the building exterior, the repainting, repairs and installation of new acoustical drop ceiling system at various areas within building interior, the removal and installation of a new trash enclosure and various site improvements. The mechanical work for the project involves a comprehensive scope, including the protection of existing structures, demolition of existing units and piping, provision of new gas-fired units, furnaces, rooftop exhaust fans, electric wall heaters and a building automation system. The plumbing work encompasses the demolition of existing fixtures and the provision of new fixtures, while the electrical work includes tasks such as service upgrade preparation, demolition of existing panels and lighting, provision of new panels, circuits, lighting, fire alarm system, security camera installation, access control system and exterior signage installation.

Client:
Pine Hill Borough

Award:
Second Place, NJSME Project of the Year Awards, Category C – Municipal Design of Infrastructure Projects, 2024



Blue Barn Recreation Center HVAC Improvements, Marlton, NJ

RVE provided professional engineering services for the Pine Hill Community Center Improvements, including the preparation of base plans, preliminary engineering and design for mechanical, electrical and plumbing, final design, advertisement/bid support, construction observation, contract administration and asbestos testing. The project consists of the abatement of the mercury contaminated gymnasium flooring, the abatement of VAT flooring, the replacement of the gymnasium bleachers, the replacement of the gymnasium scoreboard, upgrading electrical and HVAC systems throughout various areas of the community center, upgrades to the community center security systems, renovations and ADA accessibility improvements at the community center building entrances, the removal of existing wood framed GWB wall and wood door within the community room, the removal of existing cabinets and sink

Client:
Evesham Township

Award:
NJSME Project of the Year Awards
Category D– Municipal Project/
Construction Management of
Infrastructure Projects, 2024

within the kitchen, various finish improvements, a new door at the locker room vestibule, complete renovations of the toilet rooms, the removal of existing water fountain and installation of new water bottle filler, the renovation of the main entrance storefront and vestibule, the repainting and repairs of the building exterior, the repainting, repairs and installation of new acoustical drop ceiling system at various areas within building interior, the removal and installation of a new trash enclosure and various site improvements. The mechanical work for the project involves a comprehensive scope, including the protection of existing structures, demolition of existing units and piping, provision of new gas-fired units, furnaces, rooftop exhaust fans, electric wall heaters and a building automation system. The plumbing work encompasses the demolition of existing fixtures and the provision of new fixtures, while the electrical work includes tasks such as service upgrade preparation, demolition of existing panels and lighting, provision of new panels, circuits, lighting, fire alarm system, security camera installation, access control system and exterior signage installation.

46th Street Park, North Bergen, NJ

RVE provided engineering services for the preparation of a conceptual plan and final design plans for renovations to the park along 46th Street in North Bergen, NJ. The renovation of the park hosts a baseball/softball field, parking lot, dog run and basketball court. The conceptual plan was developed in collaboration with the Township’s Board of Commissioners and residents to ensure the renovations were meeting their needs and feasible within the site constraints. Residents voiced concerns about removing a small area of the park where children play catch or frisbee and sled down during the winter season in favor of additional parking spaces. However, not all residents were opposed to removing that small section of green grass, which the Township had struggled to maintain, in favor of additional parking. Ultimately, the planned renovations resulted in the loss of some trees; however, new plantings were included as part of the overall conceptual plan to help retain as much green space as possible. Some of the key features of the project included major renovations to the playground area including a new spray park, structures and decorative lighting along with the installation of artificial turf, a press box with sound system, a new batting cage, scoreboard and lighting, and bleachers for the baseball field. Additionally, a heat-resistant turf dog run, including shaded benches and a water system to keep the area clean, were built along with a new parking lot and walking path and renovations to the existing field house. The basketball court was also resurfaced and had a new backboard and rims installed. The Township received \$500,000 in Green Acres funding.

Client:

North Bergen Township

Award:

Second Place – NJSME Project of the Year Awards, Category B– Municipal Project/Construction Management of Park/Recreation Projects, 2024



Municipal Consolidation – Tax Map, Street Map, Zoning and Election District Mapping Project, Pine Hill, NJ

Beginning January 1, 2022, The Borough of Pine Hill and the Borough of Pine Valley merged into one new Camden County Municipality. The new municipality absorbed a small police department and courthouse and gained \$20 million in taxable property as well as the exclusive Pine Valley Golf Course. The new updated digital tax maps were certified by the New Jersey Division of Taxation and were also submitted to the Camden County Board of Taxation. This transition was made easier by knowing that the consolidation was in expert hands. RVE worked with up-to-date geographical information system (GIS) technology for digital mapping and data management along with a staff of experienced CAD Operators, Cartographers, GIS Specialists and Surveyors to provide new street index maps for the Police Department, zoning maps for the Planning Department and new election district maps for the New Jersey

Client:

Pine Hill Borough

Award:

First Place – NJSME Project of the Year Awards, Municipal Project Management Projects-Populations under 20,000; 2023

Division of Elections and the Camden County Board of Elections in addition to the newly approved tax maps.

Municipal Consolidation – Tax Map, Street Map, Zoning and Election District Mapping Project, Pine Hill, NJ

Beginning January 1, 2022, The Borough of Pine Hill and the Borough of Pine Valley merged into one new Camden County Municipality. The new municipality absorbed a small police department and courthouse and gained \$20 million in taxable property as well as the exclusive Pine Valley Golf Course. The new updated digital tax maps were certified by the New Jersey Division of Taxation and were also submitted to the Camden County Board of Taxation. This transition was made easier by knowing that the consolidation was in expert hands. RVE worked with up-to-date geographical information system (GIS) technology for digital mapping and data management along with a staff of experienced CAD Operators, Cartographers, GIS Specialists and Surveyors to provide new street index maps for the Police Department, zoning maps for the Planning Department and new election district maps for the New Jersey Division of Elections and the Camden County Board of Elections in addition to the newly approved tax maps.

Client:

Pine Hill Borough

Award:

First Place – NJSME Project of the Year Awards, Municipal Project Management Projects-Populations under 20,000; 2023

Lenola Town Center Improvements Camden Avenue (CR 537) from Pennsauken Creek to Lenola Road, Moorestown, NJ

RVE provided construction management services for the Lenola Town Center improvements from CR 537 from Pennsauken Creek to Lenola Road in Moorestown, NJ. The intersection of Camden Avenue and Lenola Road is a well-known and well-traveled center point in town and hosts pedestrian and automotive traffic at all times of the day. Additionally, it houses a diverse range of local and corporate businesses. For the duration of the project, RVE was responsible for providing professional construction management services as well as acting as the Township’s representative offering consultations and advice. RVE maintained coordination with Township and local establishments to keep facilities operational and minimize disturbances to daily routines as well as maintain the schedule of construction. Traffic control and pedestrian traffic control during construction were important because of the higher level of activity on this roadway. Due to unique circumstances, the project required a high level of coordination with the County of Burlington. During construction, an adjacent bridge project turned into an emergency bridge repair and RVE had to maintain an open line of communication with County personnel to ensure that the construction on Camden Avenue did not interfere with the bridge repair. The County also desired to resurface the project portion of Camden Avenue as part of its Annual Paving Program, so RVE worked with the County to coordinate the Lenola Town Center improvements with that schedule in mind as well. The improvements included concrete curbs, curb ramps, sidewalks, driveways and raised medians. Aside from the improvements made, new trash receptacles, benches and bike racks were also installed along the roadway. In addition, specialized signs detailing the history of both Pennsauken Creek and Lenola Neighborhood, as well as a “Welcome to Moorestown” sign were constructed. Decorative lighting was also designed and installed on both sides of the road. Throughout the duration of the project, RVE stayed in constant contact and worked closely with contractors from several different municipal agencies, as well as the NJDOT and the Township for the concluding stages of the project. With these new roadway improvements and added features, Moorestown is now able to better highlight the history and significance that the Township has brought to the area, and most importantly, has made it safer for all of those who travel this centralized stretch of road on Camden Avenue.

Client:

Moorestown Township

Award:

Honor Place – NJSME Project of the Year Awards, Municipal Project Management Projects-Populations above 20,000; 2023



GIS Hosting Services, Ocean Township, NJ

RVE was retained to facilitate the purchase and administration of the Township of Ocean's ArcGIS Online (AGOL) account. RVE coordinated with Cartegraph to produce a Citizen Problem Reporter and asset management system on Township of Ocean's (Township) ArcGIS Online account integrated with Cartegraph's application software. RVE performed data gathering, software installation and implementation, the Citizen Reporting tool for the public, training, and testing. The system includes five users based on the prioritized department needs as identified and requested by the results of our GIS Needs Assessment Report. The Citizen Problem Reporter application is accessible to the citizens of the Township and all the residents to report issues in town. RVE uploads and administers existing GIS feature layers onto the Township of Ocean's AGOL site and produce webmaps and applications for use by the municipal government and, with approval by Township officials, for public view. The Citizen Problem Reporting System is a web-based application within ArcGIS Online that can be used by the Township to solicit and track non-emergency problems and field reports; manage each report and monitor the resolution of the reports. This application provides 24/7 access to reports and typically supplements customer service phone numbers staffed by municipal employees. Municipal employees can use the Citizen Problem Manager and Citizen Problem Dashboard to monitor, verify and assign reports to responsible agencies for resolution. Cartegraph Systems can then turn these service ticket reports into workorders that can be assigned to municipal staff and tracked.

Pump Station and Outfall Project, Wildwood, NJ

RVE provided civil/site, geotechnical, structural, mechanical and electrical engineering design services for a new pump station located immediately adjacent to the Boardwalk in Wildwood, NJ. For years the City of Wildwood had been planning a large-scale drainage improvement project to alleviate flooding along Pacific Avenue. The island's unique geography posed an engineering challenge, with Pacific Avenue at the lowest elevation surrounded by higher ground. Stormwater runoff was collected by the storm sewer system on Pacific Avenue and directed through eight existing outfalls that drained to the ocean. Due to extensive beach accretion (over 40 feet of sand per year), the existing outfalls ended about 800 feet short of the ocean, terminating in the middle of a quarter-mile beach. Even with constant maintenance by the City to expose the outfalls, the discharge capacity of the gravity fed system was significantly reduced during high tides. As a result, Pacific Avenue was frequently inundated by a combination of tidal and stormwater flooding. During the planning process, RVE prepared conceptual plans for the City to pursue outside funding. In 2017, the City of Wildwood received \$15 million in grant funding through the NJDEP Flood Hazard Risk Reduction and Resiliency Grant Program (FHRRGP) to implement the project. RVE completed design and permitting in 2019 and construction was completed from 2020 through 2022. Improvements included a new forcemain outfall extending into the ocean, the elimination of the eight existing gravity ocean outfalls, an extensive storm sewer collection system and a new collection manifold along Ocean Avenue to route stormwater to the new pump station. Tasks included the construction of a new pile supported 60-inch Ductile Iron Stormwater Force Main Outfall extending into the ocean, a stormwater management pump station constructed adjacent to the Boardwalk with four 200 horsepower pumps, Controls and Diesel Backup Power Generator. The proposed improvements were located at the Leaming Avenue beach street end in the City of Wildwood.

Client:

Ocean Township, NJ

Award:

First Place – NJSME Project of the Year Awards, Municipal Project Management Projects-Populations above 20,000; 2022

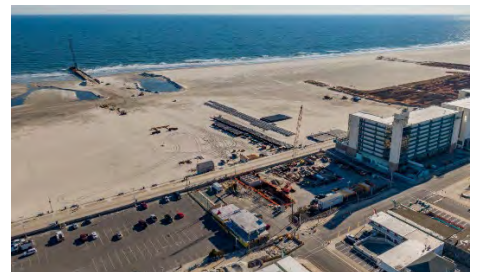


Client:

City of Wildwood

Award:

First Place – NJSME Project of the Year Awards, Municipal Project Management Projects-Populations under 20,000; 2022



Repair and Repainting of Jessup Road Water Storage Tower, West Deptford, NJ

RVE provided engineering services for the repair and repainting of the Jessup Road water storage tank in West Deptford, NJ. The 74-foot diameter 2 MG hypopyllar Jessup Road Water Storage Tank had exhibited corrosion, loss of structural integrity and needed repainting. The tank is in a highly visible location along an interstate highway and functions as a high-profile symbol for the Township. The project included making the structural repairs identified in the inspection report, followed by the complete interior and exterior repainting of the water tower. As one of the highest points in the area, the tank houses multiple cellular carriers' antennas. The Township had been in conversation with these carriers, and in lieu of removing the equipment and providing temporary antennas during repainting, the carriers proposed constructing a "corral" on the tank to house all the carriers' antennas, allowing the tank to be repainted without interference. RVE worked with the carriers to coordinate the construction of the corral and the relocation of existing antennas and cables. Temporary mounts were provided to install equipment so that the corral could be painted in conjunction with the tank. The antennas were relocated to the main corral after painting and the temporary mounts were removed. The corral system consists of a mounting rail system (56 mounts) around the edge of the tank roof and new standoff mounting brackets for cables. Prior to construction, the corral was temporarily mounted via stud welding and the carriers relocated their equipment and cables to the new mounts. Once the tank was drained for the start of repair and repainting work, the corral contractor finished welding the system to the roof. After construction was completed, the corral was turned over to the Township. Approximately 16 to 18 of the mounting locations remain unoccupied, providing the Township the ability to lease the spaces to additional carriers (or other entities), providing additional revenue. During the repairing of the tank, our in-house AMPP Certified Coating Inspector ensured that the appropriate coating system was applied. Drone technology was used to provide a cost-effective method for water tank/tower inspection and our FAA licensed Part 107 Remote Pilot obtained photo and video footage of the water tank. The result of the project was a newly repaired and repainted water tank responsible for pressurizing the Township's distribution system and providing emergency storage for fire protection. Additionally, the water tank is visible from Route 130 which provides commuters with a visually aesthetic view of the newly rehabilitated water tower.

Client:

West Deptford Township

Award:

Honor Place – NJSME Project of the Year Awards, Municipal Project Management Projects-Populations above 20,000; 2022



Atlantic Avenue Road Diet, Margate, NJ

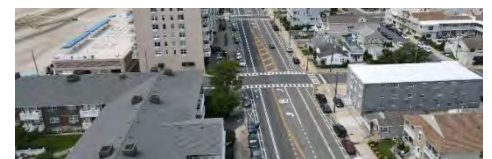
RVE provided engineering services for the completion of a traffic analysis and design engineering services for the Atlantic Avenue Road Diet Project in Margate, NJ. The goal was to enhance multimodal transportation for all roadway users by working within the existing footprint of the roadway and to enhance safety and reduce speeding along Atlantic Avenue. Because of the significance of the project to the community, it was important to the City to have public involvement throughout the process. RVE hosted two public presentations, held virtually due to the COVID-19 pandemic, that were well attended by members of the public. Attendees had the opportunity to ask questions and make comments regarding the project and the potential impact it would have on their community. During the design phase, RVE worked with the City to ensure that the concerns of the community were considered for the final design. The summer tourist season is a vital part of Margate's economy, and it was crucial for the City that the project had a shorter construction duration to avoid any potential negative impacts on the season. RVE's design plan used the footprint of the existing road with only pavement marking and signage modifications required. RVE was able to ensure

Client:

City of Margate

Award:

First Place – NJSME Project of the Year Awards, Municipal Project Management Projects-Populations under 20,000; 2021



construction was completed in time for the summer 2021 tourist season. The Road Diet has led to greater safety by slowing down through movement and redistributing space. These safety outcomes have had a positive impact on pedestrians, cyclists, patrons of sidewalk businesses and those behind the wheel. By freeing up space and balancing the needs of different types of users, the Road Diet created the opportunity for truly multimodal streets. The new design expands and increases the walkability of the corridor, which directly impacts current and future businesses along Atlantic Avenue. Sidewalk businesses such as cafés and restaurants are more easily accessible to pedestrians and cyclists.

Parks Inventory and Assessment, Marlton, NJ

RVE provided engineering services to inventory the extensive park system in Evesham Township, NJ, which encompasses large areas of preserved forest land and numerous recreation sites, both for sports and for outdoor activities. The goal of this program was to assess the conditions of each of the Township's amenity parks and provide a baseline tool for developing a planned yearly park improvement schedule. Inventory was taken of each of the existing 27 park amenities, including fields, courts, walking paths, playgrounds and parking. Working with the Superintendent of Sports Turf and Open Space, and the Township Director of Golf, Recreation and Open Space, RVE determined the condition of the amenities at each location. For playgrounds and sport courts, the condition of the equipment, the approximate date equipment was installed and the anticipated or projected time of future replacement were noted. For fields and parking, the surface condition and drainage of each was documented and recommendations were made for future replacement. Based on a Township budget of \$1 million a year, RVE determined all the recommended improvements will be able to be addressed within five years. Preference was given to park amenities in poor condition and to ADA improvements. Additionally, RVE noted whether the parks are ADA compliant and made recommendations to improve access and equipment. A final report, detailing the recommendations, photos of existing conditions, construction cost estimates with a prioritization plan was provided to the Township.

Client:

Evesham Township

Award:

First Place – NJSME Project of the Year Awards, Municipal Project Management Projects-Populations above 20,000; 2021

Borough-wide Drainage Study, Haddonfield, NJ

RVE provided engineering services to conduct a drainage study after devastating storms ravaged the South Jersey region causing extensive damage to much of the southern half of the State, including the Borough of Haddonfield, NJ, which experienced historic flooding that caused \$2.7 million in damage to 80 private residences. Specifically, the areas along Concord Drive, Heritage Road and Lafayette Avenue, and Homestead/ Lansdowne/Hinchman/Euclid Avenues/Barberry Lane were greatly impacted. During the storm, the Borough received over three and a half inches of intense rain in a short period of time overwhelming the stormwater system, streams and creeks. Haddonfield's stormwater system outfalls into the Cooper River and a branch of Newton Creek. Both bodies of water were overflowing their banks, allowing no release of water from the pipes, causing further backups above ground. This was further compounded since high tide occurred simultaneously, and the Borough had already experienced five inches of rain over four out of the seven days earlier in the week. Typical rainfall for this time of year is three inches for the month. National Weather Service experts called this storm a 500-year event. While the Borough has been installing, upgrading, and maintaining stormwater infrastructure for over a century, record keeping, and transfer of institutional knowledge has been inconsistent. As Borough Engineer, RVE was tasked with identifying and addressing drainage challenges in a 2016 study to understand

Client:

Haddonfield Borough

Award:

First Place – NJSME Project of the Year Awards, Municipal Project Management Projects-Populations under 20,000; 2021

what infrastructure exists and how well it was functioning. The purpose of the study was to establish the existing conditions of the stormwater system as it existed at the time. This effort separated the Borough into six regions that ultimately drain into either the Cooper River or Newton Creek: North East, North Central, North West, South East, South Central and South West. These regions were further broken up into drainage areas that describe where runoff within each is conveyed. After the June 2019 storms, the Borough commissioned an update to the 2016 study to analyze problem areas and recommend solutions. To address the current flooding issues, RVE studied the affected drainage areas, breaking them into discrete drainage areas for roadway, open space, and residential surfaces. Maximum flow rates for 25, 50 and 100-year storms were estimated using the rational method and the South Jersey rainfall curves. After the maximum flow rates were estimated for existing conditions, conceptual pipe runs were run through a basic model to quantify their effectiveness in managing stormwater. Consistent with New Jersey Department of Transportation and Residential Site Improvement Standards guidance, the recommendations included in the report for pipe sizes are based on required capacities to convey runoff from a 25-year storm as well as the Borough's increased design standards. RVE prepared a Recommendations Report discussing the best options for updating stormwater infrastructure to address the historic flooding.

0.50 MGD Water Reclamation Facilities Expansion, Bridgeport, NJ

RVE provided engineering and construction services for the expansion of the 0.50 MGD water reclamation facilities in Logan Township, NJ. When the project design was initiated in 2015, the Municipal Utilities Authority possessed a plant capacity of 2.0 MGD attributed to two contact stabilization tanks rated at 0.5 MGD each and two sequencing batch reactor (SBR) tanks also rated at 0.5 MGD each. The facility's average daily flow was within the 2.0 MGD rating at 1.1 MGD but Authority representatives knew industrial parks within the Township were being rapidly developed along with an influx of wastewater flow from nearby Woolwich Township. Within the industrial parks were warehouses and food processing facilities which discharged wastewater with pollutant characteristics of higher concentrations than average wastewater. In 2020, the plant's average daily flow is approximately 1.4 MGD, increasing the average daily plant flow by 25% in the last five-year span. In anticipation of this additional flow, several improvements were designed and constructed. Impellers on the pumps feeding the existing SBR tanks were replaced to compensate for the increased water height in the third proposed SBR which has a greater water height than the existing SBRs. The third proposed SBR tank was constructed with the same flow rating as the other two SBRs, but with increased water volume to treat higher strength wastes with elevated biochemical oxygen demand and chemical oxygen demand concentrations that may be discharged from the food industry facilities. The equipment/controls building was expanded to accommodate an additional SBR react pump, two additional air blowers, electrical power/controls and piping/valves. Based on the inadequacy of both the existing electrical service and emergency generator to power the proposed additional equipment and lighting, RVE proposed incorporating a new electrical service along with a transformer, switchgear and a 1,500 kW diesel generator. The project meets the needs of the Authority and residents of Logan Township and supports the ability of the water reclamation plant processes to successfully treat the influent wastewater. It contributes to the overall public health of the served communities while meeting the treatment capability demand from large industrial parks containing food producing manufacturers.

Client:

Logan Township and the Municipal Utilities Authority

Award:

Grand Prize (Design)– American Academy of Environmental Engineers and Scientists, 2021



Grant and Loan Coordination Services

Various Clients throughout New Jersey

RVE obtains grants and loans for projects such as community planning, transportation, infrastructure development, municipal facilities, energy efficiency, renewable energy, and parks and recreation. We have developed valuable relationships with funding agencies to keep our staff aware of the latest funding program updates. We discuss funding programs with key agency staff members to ensure our clients' projects are provided with the maximum amount of financial assistance available. Since information on funding sources is often difficult to find and understand, RVE developed and maintains a centralized corporate database to track grant and loan programs that may be applicable towards projects in need of funding. The database ensures key information regarding program eligibility, award amounts, matching requirements and application deadlines are readily available. Available grant opportunities include:

MUNICIPAL INFRASTRUCTURE GRANTS

NJDOT - SAFE ROUTES TO SCHOOLS

NEW JERSEY Safe Routes to School



www.saferoutesnj.org

The SRTS Program empowers communities to make walking and bicycling to school a safe, routine activity. The program makes funding available for a wide variety of projects and activities that support and encourage students to walk and bicycle to school. Funds may be used for infrastructure projects that benefit school children in grades K-8, in both public and private schools. All projects funded under this program must be located within two miles of an elementary or middle school. RVE has completed dozens of SRTS grant applications and projects for our clients.

NJDOT - LOCAL AID INFRASTRUCTURE FUND

Subject to funding appropriation, a Local Aid Infrastructure Fund is established to address emergencies and regional needs throughout the State. Any county or municipality may apply at any time. These projects are approved at the discretion of the Commissioner. Payment of project costs is the same as the Municipal Aid Program. Under this program a county or municipality may also apply for funding for pedestrian safety and bikeway projects. RVE has completed hundreds of Local Aid Infrastructure Fund projects for our municipal clients.

NJDOT COMMUNITY PROGRAMS - TRANSPORTATION ENHANCEMENT GRANTS

This is funded through a 10 percent set aside of the Surface Transportation Program category of federal funds for projects which are transportation related. Transportation Enhancement (TE) projects are designed to foster more livable communities, preserve and protect environmental and cultural resources and to promote alternative modes of transportation. Funds are available for design, right of way acquisition and construction. Selection of TE projects involves the participation of civic and environmental groups, the transportation community and other government organizations such as the state's Metropolitan Planning Organizations.

NJ DEPARTMENT OF COMMUNITY AFFAIRS - MAIN STREET NJ

Main Street New Jersey is a Main Street America™ Coordinating Program and works with communities in NJ providing on- and off-site technical assistance and training in downtown revitalization and management. This comprehensive revitalization program promotes historic and economic redevelopment of traditional business districts. Encourages/supports revitalization of downtowns through NJ.

DVRPC- SAFE ROUTES TO TRANSIT

Funded through the Delaware Valley Regional Planning Commission (DVRPC), this technical assistance program helps municipalities and counties bridge the gap between concept development and implementation. It matches eligible municipalities and counties with DVRPC staff to navigate the process of designing and funding pedestrian and bicycle improvements around rail stations.

Grant and Loan Coordination Services

Various Clients throughout New Jersey

NJDOT LOCAL AID - TRANSPORTATION ALTERNATIVES PROGRAM (TAP)

The Transportation Alternatives Program (TAP) was established by Congress in 2012 under MAP-21 and FAST Act in 2015 and is funded through a set-aside of the Federal-aid Highway Program. TAP provides federal funds for community based non-traditional projects designed to strengthen the cultural, aesthetic and environmental aspects of the nation's intermodal system. TAP projects must relate to surface transportation.

FEDERAL HIGHWAY ADMINISTRATION (FHWA) CONGESTION MITIGATION & AIR QUALITY (CMAQ) IMPROVEMENT PROGRAM

In general, projects are eligible for CMAQ funding consideration if they are intended to reduce emissions in the region, either through direct (such as converting to low-emission vehicles) or indirect means (such as traffic signal improvements that improve vehicle flow and reduce congestion or outreach programs to promote carpooling). The air quality benefits of projects should be well-supported by recent evidence of their effects on emissions; however, innovative projects without supporting precedent data may also be considered.

NJDOT LOCAL AID - TRANSIT VILLAGE GRANT



This program will award grants for traditional and non-traditional transportation projects that enhance walking, biking and/or transit ridership within 112 miles of the transit facility. Only New Jersey municipalities that have been designated as Transit Villages by the Commissioner of Transportation and the inter-agency Transit Village Task Force are eligible to apply.

Environmental/Utility Grants

DVRPC - TRANSPORTATION & COMMUNITY DEVELOPMENT INITIATIVE (TCDI)

Funded by the DVRPC for planning, analysis or design initiatives for projects or program which enhance development or redevelopment and enhance or improve the efficiency of the regional transportation system.

STATE AGRICULTURE DEVELOPMENT COMMITTEE (SADC) - FARMLAND PRESERVATION PROGRAM

The SADC provides planning incentive grants to municipalities or counties to help purchase development easements to permanently preserve large blocks of reasonably contiguous farms in project areas they have identified.

MUNICIPAL ENERGY GRANTS

NJ CLEAN ENERGY PROGRAM – MUNICIPAL/LOCAL GOVERNMENT ENERGY AUDIT PROGRAM

This program covers up to 75% of the cost for an energy audit – provided that certain minimum measures are implemented.

NJ CLEAN ENERGY PROGRAM – NJ SMART START BUILDINGS PROGRAM

Commercial, industrial, institutional, government, agricultural projects. Eligible categories: new construct/additions, remodeling, renovations, equip replacement. Includes design incentives, tech support/equipment incentives (requires pre-approval).

NJ BOARD OF PUBLIC UTILITIES – RENEWABLE ENERGY INCENTIVE PROGRAM (REIP)

NJDEP provides annual grants for Renewable Energy Resources for Biopower and Energy Storage. Private and public facilities can apply for the grant which is awarded annually.

NJ BOARD OF PUBLIC UTILITIES – ALTERNATIVE & CLEAN ENERGY PROGRAM

NJDEP provides annual grants for Renewable Energy Resources for Biopower and Energy Storage. Private and public facilities can apply for the grant which is awarded annually.

Grant and Loan Coordination Services

Various Clients throughout New Jersey

HAZARDOUS DISCHARGE SITE REMEDIATION FUND (HDSRF)

State funding is available through the HDSRF to investigate abandoned or foreclosed properties with the intent to spur redevelopment of these sites. Municipalities can obtain 100% grants to perform Preliminary Assessments/Site Investigations (PA/SIs). RVE has received grants for our municipal clients totaling over \$20 million.

DEPARTMENT OF AGRICULTURE & RURAL DEVELOPMENT- WATER & WASTEWATER DIRECT LOANS & GRANTS

Provides funding for clean, reliable drinking water systems, sanitary sewage disposal, sanitary solid waste disposal and stormwater drainage to households and businesses in rural areas and towns with a population not greater than 10,000. The funds are for public bodies, non-profits and Indian Tribes. Award Value: Long term, low interest loans. If funds are available, a grant may be combined with a loan, if necessary, to keep user costs reasonable.

DEPARTMENT OF AGRICULTURE & RURAL DEVELOPMENT- EMERGENCY COMMUNITY WATER ASSISTANCE

Helps eligible communities prepare, or recover from, an emergency that threatens the availability of safe, reliable drinking water.

NJ DEPARTMENT OF ENVIRONMENTAL PROTECTION (NJDEP)- SHORE PROTECTION GRANTS & LOANS

To protect existing development from sea level rise/shoreline migration thru dune creation/maintain beach fill projects and repair of existing shore protection structures. Municipalities/counties; local cost share 25%. Loans available for 25% local share.

NJ DEPARTMENT OF ENVIRONMENTAL PROTECTION (NJDEP)- SHORE PROTECTION GRANTS & LOANS

To acquire storm damaged property for storm protection and recreation/conservation purposes. Eligible to municipalities and counties located in the state's coastal area. 50% grant/50% loan.

NJ DEPARTMENT OF ENVIRONMENTAL PROTECTION (NJDEP)- DRINKING WATER STATE REVOLVING FUND PROGRAM

Provides low-interest loans to finance the costs of infrastructure needed to achieve or maintain compliance with Safe Drinking Water Act requirements and to protect the public health in conformance with the objectives of SDWA.

NJ DEPARTMENT OF ENVIRONMENTAL PROTECTION (NJDEP)- CLEAN WATER FINANCING PROGRAM

The Clean Water Financing Program provides low-cost financial assistance for the construction of projects that protect, maintain and improve water quality.

NJ DEPARTMENT OF ENVIRONMENTAL PROTECTION (NJDEP)- NJ PINELANDS INFRASTRUCTURE TRUST

Funding for infrastructure projects needed to accommodate existing/future needs in 23 designated Pinelands Areas. Funding available for new collection systems, interceptors and expansion/upgrade of wastewater treatment facilities.

NJ DEPARTMENT OF ENVIRONMENTAL PROTECTION (NJDEP)- PETROLEUM UNDERGROUND STORAGE TANK REMEDIATION

Loans to municipalities to upgrade or close regulated underground storage tanks.

PLANNING GRANTS

NJ DEPARTMENT OF COMMUNITY AFFAIRS/OFFICE OF SMART GROWTH - SMART FUTURE PLANNING GRANTS

Funds planning initiatives to meet Smart Growth objectives-more livable and sustainable communities. Encourage projects consistent with established state/regional planning precepts, multiple municipal/county partnerships to address issues that transcend local municipal boundaries.

NJ DEPARTMENT OF ENVIRONMENTAL PROTECTION - GREEN COMMUNITIES GRANT

Communities that need assist w/Community Forestry Management Plan (CFMP) are eligible. Offered every year for municipalities and counties. Grants are up to \$3,000 with a 100% match; can be made of in-kind and volunteer hours at Federal volunteer rate.

NJ DEPARTMENT OF ENVIRONMENTAL PROTECTION VIA GREEN ACRES – RECREATIONAL TRAILS PROGRAM

Provides federal assistance for developing, improving and maintaining trails and trail facilities. Trails can be for non-motorized, multi-use and motorized purposes. Maximum grant award is \$25,000 for non-motorized projects.

NJ I-Bank/NJEIT Experience – Partial Listing

Various Clients throughout New Jersey

RVE obtains grants and loans options for clients through the New Jersey Infrastructure Bank (NJ I-Bank) as well as the former NJ Infrastructure Trust (NJEIT) Grant Programs. Below is an overview of recent grants procured for clients.

Client	Project	Year	Amount
Bordentown SA	Energy Audit Improvements	2012	\$1.6M
	Collection System Improvements	2011	\$1M
	Screw Pump Replacement	2010	\$1.2M
Borough of Bellmawr	Various Water System Improvements, Water Main & Appurtenances Contracts 1-3	2017	\$370,000
	Various Water System Improvements, Water Main & Appurtenances Contract 4	2017	\$260,000
	Warren Avenue Elevated Water Storage Tank	2017	\$2.5M
	Storm Sewer Installation - Discharge into Big Timber Creek	2007	\$8M
City of Bordentown	Well 2A Replacement	2016	\$0.85M
	Media Replacement	2016	\$1.2M
	Valve Replacement	2016	\$0.19M
	Electrical Upgrades	2016	\$0.630M
	Dehumidification	2016	\$0.084M
Borough of Stone Harbor	Water and Sewer Replacement Phase 1	2007	\$1.8M
City of Camden	Pump Station Upgrades	2015	\$10M
	Parkside Water Treatment Plant	2002	\$2.2M
	Morris Delair Well Fields	2001	\$5M
City of Cape May	New 800-foot Sands Well No. 8	2016	
	Kearney Avenue Sewer Main Replacement	2001	\$462,000
	Kearney Avenue Water Main Replacement	2001	\$255,000
Collingswood Borough	Newton Lake Drive Sewer Interceptor	2002	\$1.45M
	Fern Avenue Water and Sewer Replacement	2001	\$574,000
	Newton Lake Drive Sewer Interceptor	2000	\$1M
	Roberts Avenue Pump Station Rehabilitation	2010	\$500,000
	New Well, Aerator Replacement & Colford & Mansion Avenue Utility Replacement	2012	\$2.1M
	Comley Avenue Water Plant	2023	\$8.0M
Colonial Estates	Water Main Project	2011	\$2.2M
Ewing-Lawrence SA	Scotch Road Sewer Interceptor Replacement	2011	\$1.5M
	Sullivan Way Pump Station & Force Main Replacement	2023	\$18M
	Fourth Street Force Main Dualization	2023	\$22.5M
Gloucester City	Water Meter Replacement	2014	\$893,600
	CSO, Water Main & Roadway Reconstruction - Monmouth St.	2014	\$495,800
	CSO, Water Main & Roadway Reconstruction - Hudson St.	2014	\$483,200
	CSO, Water Main & Roadway Reconstruction - Cumberland St.	2014	\$639,300
	Replacement of WTP and System Improvements	2008	\$9.5M
	Essex Street and Nicholson Street Pump Stations	2003	\$3M
Gloucester County Utilities Authority	Electric Blower Replacement	2016	\$2.2 M
	Grit System Replacement	2016	\$2.2M
	Replacement of Clarifiers 1 & 4	2016	\$1.5M
	Anaerobic Digesters with Biosolids Handling	2018	\$28M
	Sludge Incinerator Air Pollution Control Equipment	2015	\$5.6M
	Various Wastewater Treatment Plant Improvements	2014	\$2.6M
	Warren Street Pump Station Air Release Valve Modifications	2014	\$400,000
	Sludge Thicken Replacement	2012	\$800,000
	Incinerator Controls	2012	\$1.2M

NJ I-Bank/NJEIT Experience – Partial Listing

Various Clients throughout New Jersey

Client	Project	Year	Amount
	Plant Substation Electrical Upgrades	2010	\$300,000
	Shoppers Lane Pump Station Force Main Replacement	2010	\$1.2M
	TV Cleaning & Rehabilitation of Porches Branch Interceptor	2009	\$1.1M
	Replacement of Clarifiers #2&3	2009	\$0.8M
	Combined Heat & Power Project with Gas Conditioning	2022	\$2.56M
	Electrical Switchgear replacement	2023	\$1.16M
	Combined Heat and Power Engines	2023	\$6.94M
	Bio-Gas Storage Project	2023	\$700,000
Gloucester Township MUA	Various Interceptor Upgrades And Wastewater Treatment Plant Improvements	2008	\$2.3M
Gloucester Township	Lake Renee Improvements	2009	\$622,000
	Cherrywood Drainage System Improvements		\$1.475M
Harrison Township	Wastewater Treatment Plant	2002	\$3.6M
	Pump Stations 1, 2, 4 and 7 Formalization	2003	\$2M
Lakehurst Borough	Water Main Replacement, Phase I	2018	\$1.1M
Lakewood Township MUA	Airport Road Water Storage Tank Replacement	2008	\$1.6M
Jersey City MUA	Phase 2A Sewer Improvements	2019	\$341M
	Phase 5A Sewer Improvements	2019	\$31M
	Phase 7A Sewer & Water Improvements	2019	\$40M
	Van Winkle Avenue Water & Sewer Replacements	2018	\$5.5M
	Mina Drive & Pine Street CSO Pump Stations	2016	\$3.5M
	East & West Side Pump Stations Generators Replacement	2016	\$1.2M
	Sewer Separation on Trenton Street	2014	\$4.2M
	Sip Avenue CSO Replacement	2014	\$5.9M
	Newark Avenue CSO Replacement	2014	
Maple Shade Township	Water Meter Replacement Program	2017	\$1.8M
	Orbal System Replacement with SCADA & Smart BNR	2016	\$1.75M
	Sludge Press Replacement	2015	\$1.3M
	Clarifier Upgrades	2015	\$400,000
	Wastewater Treatment Plant Improvements	2011	\$1.5M
	Replacement of ACP Water Mains	2009	\$800,000
	Main Street Water Treatment Plant	2007	\$10M
	Coles Avenue Water Main	2006	\$820,000
	Route 73 Water Transition Main	2006	\$1.3M
	Rudderow Avenue Water Main	2006	\$475,000
	Lead Service Line Replacement	2023	\$3.0M
Manchester Township	Installation of Automated Meter Reading System and Replacement of Select Meters	2018	\$2.6M
	Painting of the Route 37 West 1.0 MG Water Storage Tank	2017	\$1.4M
Merchantville-Pennsauken Water Commission	Electrical Upgrades to Water Treatment Plants and Browning Road Water Plant Lime Building	2007	\$1.3M
	Water Reuse Project	2010	\$1.2M
	Park Avenue Water Plant Additional Treatment	2023	\$10M
	National Highway Water Plant Additional Treatment	2023	\$8.5M
Middlesex Borough	Sanitary Sewer Improvements, Phase III	2019	
	Sanitary Sewer Improvements, Phase I	2018	
Phillipsburg Town	Wastewater Treatment Plant Upgrade & Outfall Relocation	2013	\$6.6M
	UV Disinfection and Plant Improvements	2015	\$4M
	Riverside Way Pump Station & Force Main Replacement	2023	\$4.5M

NJ I-Bank/NJEIT Experience – Partial Listing

Various Clients throughout New Jersey

Client	Project	Year	Amount
Salem City	Water Treatment Plant	2010	\$10M
	Wastewater Treatment Plant Improvements	2010	\$1M
Washington Twp MUA	Shoppers Lane Sewer Main Replacement	2016	\$0.5M
	Miscellaneous Sewer System Rehabilitation	2016	\$0.75M
	Forrest Drive Pump Station Replacement	2016	\$0.74M
	Replacement of Well Houses Nos. 2 & 8	2016	\$1.2M
	Shoppers Lane Water Main Replacement	2016	\$0.55M
	Five Points 3.0M Elevated Water Storage Tank Painting	2016	\$1.35M
	Office Building & Well Security Improvements	2016	\$0.15M
	Drilling of Replacement of Well No. 2A	2016	\$0.55M
Waterford MUA	Water Infrastructure Improvements	2002	\$2.5M
	Water Storage Tank and Water Mains	2001	\$2.8M
Stone Harbor Borough	Storm Sewer Outfall Elimination Program Phases 1, 2 & 3	2010-2014	\$2.0M/Phase
	Sanitary Sewer and Water Main Replacement Program	2007	\$2.0M
Wildwood Water Utility	Wildwood Crest Water Main Replacement	2005/ 2006	\$1.2M
Willingboro Township	Storm Sewer Outfall Replacement, Phase I	2011	\$1.5M
Winslow Township	Infiltration & Inflow Remediation	2018	\$1M
	Wells 3, 7-9 Radium Removal Water Treatment Plant	2011	\$2.5M
	Well #2 Water Plant Upgrades	2022	\$2.4M



Client References

Section 4

Client Reference List

Municipal and Regional Utility Clients

CLIENT/AGENCY	CLIENT REFERENCE
NORTH JERSEY REGION	
Alpha Borough 1001 East Boulevard, Alpha, NJ	Mayor Joseph Schocko, III 908-246-4695, alphamayor@alphaboronj.org
Bayonne City 630 Avenue C, Bayonne, NJ	John Armstrong, PE, City Engineer 201-858-6070, jarmstrong@baynj.org
Bergen County Utilities Authority (BCUA) 98 Empire Blvd, Moonachie, NJ	Ronald Phillips, Chairman, 201-641-5811 Robert Laux, Executive Director, 201-807-5801
City of Newark Water & Sewer Utility 239 Central Ave, Newark, NJ	Kareem Adeem, Director 973-733-5361, adeemk@ci.newark.nj.us
East Newark Borough 34 Sherman Avenue, East Newark, NJ	Fred Confessore, Borough Administrator 973-481-2902 ext. 231; ba@boroughofeastnewark.com
Ewing Lawrence Sewerage Authority (ELSA) 600 Whitehead Road, Lawrenceville NJ	Robert Filler, Executive Director 609-587-4061
Flemington Borough 38 Park Avenue, Flemington, NJ	Marcia Karrow, Mayor 908-782-8840; mkarrow@historicflemington.com
Jersey City Municipal Utilities Authority 555 Route 440, Jersey City, NJ	Richard Haytas, PE, Chief of Engineering 201-432-1150; r.haytas@jcmua.com Jose Cunha, Executive Director, j.cunha@jcmua.com
Middlesex Borough 1200 Mountain Avenue, Middlesex, NJ	Michael La Place, Borough Administrator 732-356-7400 x264; mlaplace@middlesexboro-nj.gov
Middlesex County Utilities Authority (MCUA) 2571 Main Street Extension, Sayreville, NJ	Joseph Cryan, Executive Director 732-721-3800 x 576, JCryan@mcua.com
Passaic Valley Water Commission (PVWC) 1525 Main Street, Clifton, NJ	Jim Mueller, Executive Director 973-340-4307, jmueller@pvwc.com
Spotswood Borough 77 Summerhill Road, Spotswood, NJ	Frederick C. Carr, Borough Administrator 732-251-0700; fcarr@spotswoodboro.com;
Trenton Water Works 333 Cortland Street, Trenton, NJ	Saf Saifuddin, Chief Engineer 609-989-3610, ssaifuddin@trentonnj.org
Town of Phillipsburg Utility 120 Filmore Street, Phillipsburg NJ	Randy Piazza, Mayor 908-454-5500, rpiazza@phillipsburgnj.org
Watchung Borough 15 Mountain Boulevard, Watchung, NJ	Ronald Jubin, Mayor 908-756-0080
New Jersey American Water Multiple locations	Donald Shields, VP Director of Engineering
Veolia Water New Jersey Multiple locations	John Libitz, Project Leader Mid-Atlantic Region 201-852-0324, John.Libitz@veolia.com

Client Reference List

Municipal and Regional Utility Clients

CLIENT/AGENCY	CLIENT REFERENCE
SOUTH JERSEY REGION	
Bordentown City 101 Park Street, Bordentown, NJ	Joseph Myers, City Commissioner 609-298-0604; jmyers@cityofbordentown.com
Bordentown Sewerage Authority 954 Farnsworth Avenue, Bordentown, NJ	Elizabeth Kwelty, Administrative Manager 609-291-9105; ekwelty@bordentownsa.org
Camden County Municipal Utilities Authority 1645 Ferry Ave, Camden, NJ	Scott Schreiber, Executive Director 856-583-1261, sschreiber@ccmua.org
Camden City 520 Market Street, Camden, NJ	Victor Carstarphen, Mayor 856-757-7200, mayor@ci.camden.nj.us
Collingswood Borough 678 Haddon Avenue, Collingswood, NJ	Cassandra Duffy, Borough Administrator 856-854-0720 x 125; cduffey@collingswood.com
Gloucester County Utilities Authority 2 Paradise Road, West Deptford, NJ	John Vinci, Executive Director 856-423-3500 x 102, jvinci@gcuanj.com
Lakewood Municipal Utilities Authority 390 New Hampshire Avenue, Lakewood, NJ	Justin Flancbaum, Executive Director 732-363-4422; jflancbaum@lakewoodmua.com
Maple Shade Township 200 Stiles Avenue, Maple Shade, NJ	Susan Danson, Township Manager 856-779-9610; twpMgr@mapleshade.com
Merchantville Pennsauken Water Commission 6751 Westfield Avenue, Pennsauken NJ	Richard Spafford, Engineering Director 856-486-9317, rspafford@mpwc.com
Mount Laurel Municipal Utilities Authority 1201 South Church Street, Mount Laurel, NJ	Scott Holmes, Operations Engineer 856-234-0062
Millville City 12 South High Street, Millville, NJ	Steve Pierce, Superintendent of Water 856-825-7000; steve.pierce@millvillenj.gov
Vineland Municipal Utilities 330 East Walnut Road, Vineland, NJ	Joseph Prato, Water Utility Department Head 856-794-4000 x4030
Florence Township 711 Broad Street, Florence, NJ 08518	Thomas Sahol, Township Manager 609-499-2525; tsahol@florencenj.gov
West Deptford Township Grove-Crown Point Road, West Deptford, NJ	James P. Mehaffey, Mayor 856-845-4004; jmehaffey@westdeptford.com
Winslow Township 125 Route 73, Braddock, NJ	Joseph Gallagher, Township Administrator 609-567-0700 x5000; administration@winslowtownship.com

Client Reference List

Municipal and Regional Utility Clients

CLIENT/AGENCY	CLIENT REFERENCE
JERSEY SHORE REGION	
Atlantic City Municipal Utilities Authority 401 Virginia Avenue, Atlantic City, NJ	Clifford Keen, Deputy Executive Director 609-345-3315; ckeen@acmua.org
Barnegat Township 900 West Bay Avenue, Barnegat, NJ	Martin Lisella, Township Administrator 609-698-0080 x170; mlisella@barnegat.net
Beachwood Borough 1600 Pinewald Road, Beachwood, NJ	William J. Cairns, Mayor 732-286-6000; mayorcairns@beachwoodusa.com
Buena Borough Municipal Utilities Authority 421 Plymouth Road, Landisville, NJ	Alan Zorzi, Plant Superintendent 856-697-0450; a.zorzi@buenaboroughmua.com
Lacey Township Municipal Utilities Authority 34 North Kennedy Boulevard, Forked River, NJ	Troy Burton, Executive Director 609-693-8188; tburton@laceymua.com
Little Egg Harbor Municipal Utilities Authority 823 Radio Road, Little Egg Harbor, NJ	Earl F. Sutton, Jr., Executive Director 609-296-1168; earlsuttonjr@lehmma.com
Lower Township Municipal Utilities Authority 2900 Bayshore Road, Villas, NJ	Steve Blankenship, Executive Director 609-886-7146; sblankenship@ltmua.org
Manchester Township 1 Colonial Drive, Manchester, NJ	Al Yodakis, Director of Public Works 732-657-8121; AYodakis@manchestetwp.com
Stafford Township 260 East Bay Avenue, Stafford, NJ	Matthew von der Hayden, Township Administrator/Director of Water & Sewer, 609-597-1000; mvonderhayden@staffordnj.gov
Toms River Municipal Utilities Authority 340 West Water Street, Toms River, NJ	Bernard Rutkowski, Executive Director 732-240-3500; brutkowski@tomsrivermua.org
Township of Middletown Sewerage Authority 100 Beverly Way, Belford, NJ	Paul Thompson, Executive Director 732-495-1010; pthompson@tomsanj.com
Wildwood City 4400 New Jersey Avenue, Wildwood, NJ	Krista McConnell, Commissioner 609-522-2444; kmccconnell@wildwoodnj.org

Client Reference List

Municipal and Regional Utility Clients

CLIENT/AGENCY	CLIENT REFERENCE
PENNSYLVANIA	
Bethlehem City 10 East Church Street, Bethlehem, PA 18018	Basel Yandem, Chief Engineer 610-844-7690; BYandem@bethlehem-pa.gov
Bucks County Water & Sewer Authority 1275 Almshouse Road, Warrington, PA	John Butler, Chief Operations Officer 215-343-2538
Catasauqua Borough 90 Bridge Street, Catasauqua, PA	Glenn Eckhart, Borough Manager 610-264-0571; manager@catasauqua.org
Chester County Water Authority 415 Welsh Street, Chester, PA	Jeff DeRusso, PE, Director of Engineering 484-846-1214; jeff.derusso@chesterwater.com
Delaware County Regional Water Authority 100 East 5 th Street, Chester, PA	Robert Willert, Executive Director 610-876-5523; willertr@delcora.org
Falls Authority (Township of) 555 Lincoln Highway, Fairless Hills, PA	Peter Kim, Executive Director 215-946-6062; pkim@tofa-pa.com
Folcroft Borough 799 East Ashland Avenue, Folcroft PA	Shawn Payne; Borough Manager 610-522-1305; manager@folcroftborough.org
Hellertown Borough Authority 501 Durham Street, Hellertown, PA	Lisa Boehm, Business Manager 610-838-8051; lboehm@hellertownwater.org
Lansdale Borough 1 Vine Street, Lansdale, PA	John Ernst; Borough Manager 215-361-8335; jernst@lansdale.org
Lehigh County Authority 1053 Spruce Road, Allentown, PA	Phil DePoe, Senior Engineer PhilipDePoe@lehighcountyauthority.org
Norristown Municipal Waste Authority 25 East Marshall Street, Norristown, PA	Greg Nestor, Board President 610-270-3191
Phoenixville Borough 351 Bridge Street, Phoenixville, PA	E. Jean Krack, Borough Manager 610-933-8801; ejkrack@phoenixville.org
Warminster Municipal Authority 415 Gibson Avenue, Warminster, PA	Timothy Hagey, General Manager 215-675-3301; TimH@warminsterauthority.com

Client Reference List

Municipal and Regional Utility Clients

CLIENT/AGENCY	CLIENT REFERENCE
DELAWARE AND MARYLAND	
Baltimore County 111 West Chesapeake Avenue, Towson, MD	Jeffrey S. Peluso, PE, Engineering Design Division Chief jpeluso@baltimorecountymd.gov
Calvert County Water and Sewer 30 Duke Street, Prince Fedrick, MD	Chyanne Nader, Engineer II 443-771-6775, Chyanne.nader@calvertcountymd.gov
City of Dover 710 Williams Street, Dover, DE	Jason Lyon, PE, Director of Water & Wastewater 302-736-7025; jlyon@doover.de.us
Harford County Water & Sewer 3334 Abingdon Road, Abingdon, MD	Dan Pazdersky, Chief Engineering 410-638-3300 x 1472, dspazdersky@harfordcountymd.gov
Washington Suburban Sanitary Commission 14501 Sweitzer Lane, Laurel, MD	

CLIENT/AGENCY	CLIENT REFERENCE
NORTH CAROLINA	
Brunswick County PO Box 249, Bolivia, NC	John Nichols, Public Utilities Director 910-253-2655 opt. 2; john.nichols@brunswickcountync.gov
Durham City 101 City Hall Plaza, Durham, NC	Sean Haislip, AIA, NCARB, Project Manager, Turner & Townsend Heery, 984-301-9304; sean.haislip@turntown.com
Northwest Water Supply <i>Procured through the Environmental Policy Innovation Center</i>	Lilly Slaughter, Water Admin Assistant lslaughter@policyinnovation.org

Client Reference List

Municipal and Regional Utility Clients

CLIENT/AGENCY	CLIENT REFERENCE
REGIONAL UTILITY AUTHORITIES	
Baltimore County 111 W. Chesapeake Avenue #307, Towson, MD	Amy Bley, PE, Engineering Design Division Chief abley@baltimorecountymd.gov
Bergen County Utilities Authority 98 Empire Boulevard, Moonachie, NJ	Robert E. Laux, Executive Director 201-641-2552; rlaux@bcua.org
Camden County Municipal Utilities Authority 1645 Ferry Avenue, Camden, NJ	Scott Schreiber, Director of Administration 856- 583-1261; sschreiber@ccmua.org
Delaware County Regional Water Control Authority , 100 East Fifth Street Chester, PA	Ted Diewald, Senior Project Manager Department of Engineering, 610- 876-5523 x269; tdiewald@delcora.org
Ewing-Lawrence Sewerage Authority 600 Whitehead Rd, Lawrence Township, NJ	S. Robert Filler, Executive Director 609- 587-4061; elsa1@rcn.com
Gloucester County Utilities Authority 2 Paradise Road, West Deptford, NJ	John J. Vinci, Sr., Executive Director 856-423-3500 x102; jvinci@gcuanj.com
Joint Meeting of Essex and Union Counties 500 South 1st Street, Elizabeth, NJ	Hanifa Z. Johnson, Executive Director 908-353-1313; hjohnson@jmeuc.com
Linden Roselle Sewerage Authority 5005 South Wood Avenue, Linden, NJ	Ralph Strano, Chairman 908-862-7100; rstrano@lrsanj.org
Merchantville-Pennsauken Water Commission 6751 Westfield Avenue, Pennsauken, NJ	Jack Killion, Chief Operating Officer 856-663-0043; jkillion@mpwc.com
Middlesex County Utilities Authority 2571 Main Street Extension, Sayerville, NJ	Kevin Davis, Director Engineering 732-721-3800, kdavis@mcua.com
Neptune Township Sewerage Authority 634 Old Corlies Avenue, Neptune, NJ	Tina Della Pietro, Executive Director 732-922-3434; dellapietro@tnsa-nj.org
Ocean County Utilities Authority 501 Hickory Lane, Bayville, NJ	Keith Marcoon, PE, Executive Director 732-269-4500 x8210; kmarcoon@ocua.com

Client Reference List

Municipal and Regional Utility Clients

CLIENT/AGENCY	CLIENT REFERENCE
JERSEY SHORE REGION	
Aberdeen Township One Aberdeen Square, Aberdeen, NJ	Bryan Russell, Township Manager 732-583-4200 ext. 118; bryan.russell@aberdeennj.org
Absecon City 500 Mill Road, Absecon, NJ	Tommy Marrone, Mayor 609-641-0663; tmarrone@abseconnj.org
Atlantic City 1301 Bacharach Boulevard, Atlantic City, NJ	Uzoma Ahiake, City Engineer 609-347-5404; uahiake@acnj.gov
Atlantic City Municipal Utilities Authority 401 Virginia Avenue, Atlantic City, NJ	Clifford Keen, Deputy Executive Director 609-345-3315; ckeen@acmua.org
Barnegat Township 900 West Bay Avenue, Barnegat, NJ	Martin Lisella, Township Administrator 609-698-0080 x170; mlisella@barnegat.net
Beachwood Borough 1600 Pinewald Road, Beachwood, NJ	William J. Cairns, Mayor 732-286-6000; mayorcairns@beachwoodusa.com
Berkeley Township PO Box B, Bayville, NJ	John Bacchione, Mayor 732-244-7400; jbacchione@berkeleystownship.org
Buena Borough Municipal Utilities Authority 421 Plymouth Road, Landisville, NJ	Alan Zorzi, Plant Superintendent 856-697-0450; a.zorzi@buenaboroughmua.com
Egg Harbor City 500 London Avenue, Egg Harbor, NJ	Lisa Jampetti, Mayor 609-965-0081; lisaj@eggharborcity.org
Hamilton Township 6101 13 th Street, Mays Landing, NJ	Brett Noll, Township Administrator 609-625-1511; administrators.office@hamiltonatlnj.gov
Lacey Township 818 West Lacey Road, Forked River, NJ	Veronica Laureigh, Administrator 609-693-6636; laceyclerk@laceytownship.org
Lacey Township Municipal Utilities Authority 34 North Kennedy Boulevard, Forked River, NJ	Troy Burton, Executive Director 609-693-8188; tburton@laceymua.com
Little Egg Harbor Township 665 Radio Road, Little Egg Harbor, NJ	Rodney Haines, Township Administrator 609-296-7241; finance@leht.com
Little Egg Harbor Municipal Utilities Authority 823 Radio Road, Little Egg Harbor, NJ	Earl F. Sutton, Jr., Executive Director 609-296-1168; earlsuttonjr@lehdua.com
Little Egg Harbor Zoning Board 665 Radio Road, Little Egg Harbor, NJ	Robin Schilling, Director of Community Development 609-296-7241
Longport Borough 2305 Atlantic Avenue, Longport, NJ	A. Scott Porter, Municipal Administrator 609-823-2731 ext. 127; administrator@longport-nj.us
Lower Township Municipal Utilities Authority 2900 Bayshore Road, Villas, NJ	Steve Blankenship, Executive Director 609-886-7146; sblankenship@ltmua.org
Margate City 9001 Winchester Avenue, Margate, NJ	Michael Collins, Mayor 609-822-0424; mcollins@margate-nj.com
Middle Township 33 Mechanic Street, Cape May Court House, NJ	Kimberly Osmundsen, Business Administrator/Township Clerk 609-465-8732; kosmundsen@middletownship.com
Neptune Township 25 Neptune Boulevard, Neptune, NJ	Gina LaPlaca, Township Administrator 732-988-5200; glaplaca@neptunetownship.org
Neptune Township Sewerage Authority 634 Old Corlies Avenue, Neptune, NJ	Tina Della Pietro, Executive Director (732) 922-3434; dellapietro@tnsa-nj.org

Client Reference List

Municipal and Regional Utility Clients

CLIENT/AGENCY	CLIENT REFERENCE
JERSEY SHORE REGION	
Ocean City 861 Asbury Avenue, Ocean City, NJ	Anthony Savastano, City Engineer 609-399-6111; asavastano@ocnj.us
Ocean Township (Ocean County) 50 Railroad Avenue, Waretown, NJ	Diane B. Ambrosio, Administrator 609-693-3668; clerk@twpoceannj.gov
Pleasantville (City of) 18 North First Street, Pleasantville, NJ	Judy M. Ward, Mayor 609-484-3600; mayorward@pleasantvillenj.us
Point Pleasant Borough 2233 Bridge Avenue, Point Pleasant, NJ	Robert Sabosik, Mayor 732-892-3434; mayorsabosik@ptboro.com
Sea Bright Borough 1099 Ocean Drive, Sea Bright, NJ	Rachel Giolitto, Administrator 732-842-0099; rgiolitto@seabrightnj.org
Seaside Park Borough 1701 North Ocean Avenue, Seaside Park, NJ	John A. Peterson, Jr., Mayor 732-793-3700; mayorpeterson@seasideparknj.org
Stafford Township 260 East Bay Avenue, Stafford, NJ	Matthew von der Hayden, Township Administrator/Director of Water & Sewer, 609-597-1000; mvonderhayden@staffordnj.gov
Stafford Planning/Zoning Board of Adjustment 260 East Bay Avenue, Stafford, NJ	Linda Yockachonis, Secretary 609-597-1000; lyockachonis@staffordnj.gov
Toms River Township 33 Washington Street, Toms River, NJ	Daniel T. Rodrick, Mayor 732-341-1000
Toms River Municipal Utilities Authority 340 West Water Street, Toms River, NJ	Bernard Rutkowski, Executive Director 732-240-3500; brutkowski@tomsrivermua.org
Toms River Township Planning Board 33 Washington Street, Toms River, NJ	Lucia Lynch, Planning Board Secretary 732-341-1000; llynch@tomsrivertownship.com
Toms River Township Zoning Board 33 Washington Street, Toms River, NJ	Melissa Benedetto, Zoning Board Secretary 732-341-1000; MBenedetto@tomsrivertownship.com
Ventnor City 6201 Atlantic Avenue, Ventnor, NJ	Ed Stinson, PE, City Engineer 609-823-7935; estinson@ventnorcity.org
West Cape May Borough 732 Broadway, West Cape May, NJ	Carol E. Sabo, Mayor 609-884-1005; csabo@westcapemay.us
West Wildwood Borough 701 W. Glenwood Avenue, West Cape May, NJ	Matthew J. Ksiazek, Mayor 609-522-4845
Wildwood City 4400 New Jersey Avenue, Wildwood, NJ	Krista McConnell, Commissioner 609-522-2444; kmccconnell@wildwoodnj.org

Required Documentation

Section 5



**BARNEGAT TOWNSHIP
900 WEST BAY AVENUE
BARNEGAT, NJ 08005**



BIDDER'S CHECKLIST

The following checklist is provided for each bidder to check off documents submitted with their bid;

- A. Stockholders Disclosure Statement properly notarized listing stockholders or partners
Owning ten percent (10%) or more of corporation or partnership stock.
(Required)
- B. Non-Collusion Affidavit properly notarized. (Required)
- C. New Jersey Business Registration Certificate (BRC) (Required)
- D. Affirmative Action Evidence (Required)
- E. W-9 Form
- F. Authorized signatures on all forms.
- G. Request for Proposal for Professional Services Rate Sheet. (Required)



PLEASE EXECUTE THIS FORM AND SUBMIT WITH THE RFP PACKAGE

**TOWNSHIP OF BARNEGAT
900 WEST BAY AVENUE
BARNEGAT, NJ 08005**

RIGHT TO EXTEND – TIME FOR AWARD

The Township of Barnegat is required by the Local Public Contracts Law N.J.S.A. 40A:11-24, to make an award on products or service within sixty (60) days of the bid opening date.

Should the Township of Barnegat require an additional thirty (30) days extension to make an award of this bid, by signing this document you should grant the Township of Barnegat the right to extend this award up to ninety (90) days, if deemed necessary

SIGNED: 
(SIGNATURE)

TITLE: President & CEO
(PRINTED OR TYPED)

COMPANY: Remington & Vernick Engineers

DATED: 11 / 17 / 2025

TYPE OF PRODUCT OR SERVICE OFFERED: _____

Municipal Engineering and Consultation

PLEASE EXECUTE THIS FORM AND SUBMIT WITH THE RFP PACKAGE

PUBLIC/STOCKHOLDER DISCLOSURE STATEMENT

NAME OF BUSINESS: Remington & Vernick Engineers

I certify that the list below contains the names and home addresses of all stockholders 10% or more of the issued and outstanding stock of the undersigned.

Or

I certify that no one stockholder owns 10% or more of the issued and outstanding stock of the undersigned.

- Partnership
- Limited Partnership
- Subchapter S Corporation
- Corporation

Sign and notarize the form below, and, if necessary, complete the stockholder list below.

STOCKHOLDERS:

Name: Edward Vernick, PE, CME

Name: Craig F. Remington, PP, PLS

Home Address:

Home Address:

2059 Springdale Road

2059 Springdale Road

Cherry Hill, NJ 08003

Cherry Hill, NJ 08003

Name: _____

Name: _____

Home Address:

Home Address:

Name: _____

Name: _____

Home Address:

Home Address:

Subscribed and sworn before me this 17 day of November, 2025

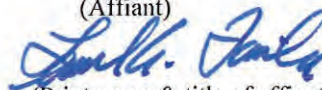


(Notary Public Signature)

My Commission Expires: March 25, 2027

DARREN GAUNT
Commission # 50189875
Notary Public, State of New Jersey
My Commission Expires
March 25, 2027

(Affiant)



(Print name & title of affiant)

Leonard A. Faiola, PE, PP, CME, President

(Corporate Seal)

PLEASE EXECUTE THIS FORM & SUBMIT WITH THE RFP PACKAGE

NON-COLLUSION AFFIDAVIT

State of New Jersey

County of Camden

I, Leonard A. Faiola, PE, PP, CME residing in Cherry Hill in the County of
(Name of Affiant) (Name of Municipality)

Camden and State of New Jersey of full age, being duly sworn according to law on my oath depose and say that:

I am President & CEO of the firm of Remington & Vernick Engineers the bidder making this Proposal
(Title or Position) (Name of Firm)

For the bid entitled 2026 Professional Services - Township and Water/Sewer Utility Pool Engineer
(Title of Bid Proposal)

And that I executed the said proposal with full authority to do so that said bidder has not, directly or indirectly entered into any agreement, participated in any collusion, or otherwise taken any action in restraint of free, competitive bidding in connection with the above named project; and that all statements contained in said proposal and in the affidavit are true and correct, and made with full knowledge that the

Township of Barnegat relies upon the truth of the statements contained in said Proposal and in the statements contained in this affidavit in awarding the contract for said project.

I further warrant that no person or selling agency has been employed or retained to solicit or secure such contract upon an agreement or understanding for a commission, percentage, brokerage, or contingent fee, except bona fide employees or bond fide established commercial or selling agencies maintained

By Remington & Vernick Engineers

Subscribed and sworn to me

Before this day 17 November, 2020

Leonard A. Faiola
(Signature)

Leonard A. Faiola, PE, PP, CME, President & CEO
(Type or print name of affiant under signature)

Notary public of NJ

My commission expires: 3 / 2527 (Seal)

DARREN GAUNT
Commission # 50189875
Notary Public, State of New Jersey
My Commission Expires
March 25, 2027

PLEASE EXECUTE THIS FORM AND SUBMIT WITH THE RFP PACKAGE

**N.J.S.A. 10:5-31 et seq. (P.L. 1975, C. 127) and N.J.A.C. 17:27
MANDATORY EQUAL EMPLOYMENT OPPORTUNITY LANGUAGE
GOODS, PROFESSIONAL SERVICE AND GENERAL SERVICE CONTRACTS**

During the performance of this contract, the contractor agrees as follows:

The contractor or subcontractor, where applicable, will not discriminate against any employee or applicant for employments because of age, race, creed, color, national origin, ancestry, marital status, affectional or sexual orientation, gender identity or expression, disability, nationality or sex. Except with respect to affectional or sexual orientation and gender identity or expression, the contract will ensure that equal employment opportunity is afforded to such applicants in recruitment and employment, and that employees are treated during employment, without regard to their age, race, creed, color, national origin, ancestry, marital status, affectional or sexual orientation, gender identity or expression, disability, nationality or sex. Such equal employment opportunity should include, but not be limited to the following: employment, upgrading, demotion, or transfer; recruitment or recruitment advertising; layoff or termination; rates of pay or other forms of compensation; and selection for training, including apprenticeship. The contractor agrees to post in conspicuous places, available to employees and applicants for employment, notices to be provided by the Public Agency Compliance Officer setting forth provisions of this nondiscrimination clause.

The contractor or subcontractor, where applicable will, in all solicitation or advertisements for employees placed by or on behalf of the contractor, state that all qualified applicants will receive consideration for employment without regard to age, race, creed, color, national origin, ancestry, marital status, affectional or sexual orientation, gender identity or expression, disability, nationality or sex.

The contractor or subcontractor, where applicable, will send to each labor union or representative or workers with which it has a collective bargaining agreement or other contract or understanding, a notice, to be provided by the agency contract officer advising the labor union or workers' representative of the contractor's commitments under this act and should post copies of the notice in conspicuous places available to employees and applicants for employment.

The contractor or subcontractor, where applicable, agrees to comply with any regulations promulgated by the Treasurer pursuant to N.J.S.A. 10:5-31 et seq., as amended and supplemented from time to time and the Americans with Disabilities Act.

The contractor or subcontractor agrees to make good faith efforts to afford equal employment opportunities to minority and women workers consistent with Good faith efforts to meet targeted county employment goals established in accordance with N.J.A.C. 17:27-5.2, or Good faith efforts to meet targeted county employment goals determined by the Division pursuant to N.J.A.C. 17:27-5.2.

The contractor or subcontractor agrees to inform in writing its appropriate recruitment agencies including, but not limited to, employment agencies, placement bureaus, colleges, universities, labor unions, that it does not discriminate on the basis of age, creed, color, national origin, ancestry, marital status, affectional or sexual orientation, gender identity or expression, disability, nationality or sex, and that it will discontinue the use of any recruitment agency which engages in direct or indirect discriminatory practices.

The contractor or subcontractor agrees to revise any of its testing procedures, if necessary, to assure that all personnel testing conforms with the principles of job-related testing, as established by the statutes and court decisions of the State of New Jersey and as established by applicable Federal law and applicable Federal court decisions.

PLEASE EXECUTE THIS FORM AND SUBMIT WITH THE RFP PACKAGE

**N.J.S.A. 10:5-31 ET SEQ. (P.L. 1975, C.127) AND N.J.A.C. 17:27
MANDATORY EQUAL EMPLOYMENT OPPORTUNITY LANGUAGE
GOODS, PROFESSIONAL SERVICE AND GENERAL SERVICE CONTRACTS
(CONTINUED)**

In conforming with the targeted employment goals, the contractor or subcontractor agrees to review all procedures relating to transfer, upgrading, downgrading and layoff to ensure that all such actions are taken without regard to age, creed, color, national origin, ancestry, marital status, affectional or sexual orientation, gender identity or expression, disability, nationality or sex, consistent with the statutes and court decisions of the State of New Jersey, and applicable Federal law and applicable Federal court decisions.

The contractor should submit to the public agency, after notification of award but prior to execution of a goods and services contract, one of the following three documents:

Letter of Federal Affirmative Action Plan Approval

Certificate of Employee Information Report

Employee Information Report Form AA-302

The contractor and its subcontractors should furnish such reports or other documents to the Division of Public Contract Equal Employment Opportunity Compliance as may be requested by the office from time to time in order to carry out the purposes of these regulations, and public agencies should furnish such information as may be requested by the Division of Public Contracts Equal Employment Opportunity Compliance for conducting a compliance investigation pursuant to Subchapter 10 of the Administrative Code at N.J.A.C. 17:27.

Submitted by: Remington & Vernick Engineers
(Name of Firm)

Name: Leonard A. Faiola, PE, PP, CME
(Please type or print)

Signature: 

Title: President & CEO

Date: 11 / 17 / 2025

PLEASE EXECUTE THIS REQUIRED FORM AND SUBMIT WITH RFP PACKAGE

**EEO/AFFIRMATIVE ACTION COMPLIANCE NOTICE TO BIDDERS
N.J.S.A. 10:5-31 AND N.J.A.C. 17:27
GOODS, PROFESSIONAL SERVICE AND GENERAL SERVICE CONTRACTS**

All successful bidders are required to submit evidence of appropriate affirmative action compliance to the County Division of Public Contracts Equal Employment Opportunity Compliance. During a review, Division representatives will review the County files to determine whether the affirmative action evidence has been submitted by the vendor/contractor. Specifically, each vendor/contractor should submit to the County, prior to execution of the contract, one of the following documents:

Goods and General Service Vendors

1. Letter of Federal Approval indicating that the vendor is under an existing federally approved or sanctioned affirmative action program. A copy of the approval letter is to be provided by the vendor to the County and the Division. This approval letter is valid for one year from the date of issuance.

Do you have a federally approved or sanctioned EEO/AA program? Yes ___ No
If yes, please submit a photo copy of such approval.

2. A Certificate of Employee Information Report (hereafter "Certificate"), issued in accordance with N.J.A.C. 17:27-1.1 et seq. The vendor must provide a copy of the Certificate to the County as evidence of its compliance with the regulations. The Certificate represents the review and approval of the vendor's Employee Information Report, Form AA-302 by the Division. The period of validity of the Certificate is indicated on its face. Certificates must be renewed prior to their expiration date in order to remain valid.

Do you have a State Certificate of Employee Information Report Approval? Yes No ___
If yes, please submit a photo copy of such approval.

3. The successful vendor should complete an Initial Employee Report, Form AA-302 and submit it to the Division with \$150.00 fee and forward a copy of the Form to the County. Upon submission and review by the Division, this report should constitute evidence of compliance with the regulations. Prior to execution of the contract, EEO/AA evidence must be submitted.


The successful vendor should complete an initial Employee Report (Form AA-302) on the Division website at www.state.nj.us/treasury/contract compliance.

The successful vendor(s) must submit the AA-302 Report to the Division of Public Contracts Equal Employment Opportunity Compliance, with a copy to Public Agency.

The undersigned vendor certifies that he/she is aware of the commitment to comply with the requirements of N.J.S.A. 10:5-31 and N.J.A.C. 17:27 and agrees to furnish the required forms of evidence.

The undersigned vendor further understands that his/her bid should be rejected as non-responsive if said contractor fails to comply with the requirements of N.J.S.A. 10:5-31 and N.J.A.C. 17:27.

Company: Remington & Vernick Engineers

Signature: 

Print Name: Leonard A. Faiola, PE, PP, CME, President & CEO

Company: Remington & Vernick Engineers

Date: 11 / 17 / 2025

Certification 61809

CERTIFICATE OF EMPLOYEE INFORMATION REPORT RENEWAL

This is to certify that the contractor listed below has submitted an Employee Information Report pursuant to N.J.A.C. 17:27-1.1 et. seq. and the State Treasurer has approved said report. This approval will remain in effect for the period of **15-Oct-2025 to 15-Oct-2028**

REMINGTON & VERNICK ENGINEERS
2029 SPRINGDALE RD
CHERRY HILL NJ 08003



Elizabeth Maher Muoio
ELIZABETH MAHER MUOIO
State Treasurer



STATE OF NEW JERSEY BUSINESS REGISTRATION CERTIFICATE

Taxpayer Name: REMINGTON & VERNICK ENGINEERS II, INC.

Trade Name:

Address: 2059 SPRINGDALE ROAD
CHERRY HILL, NJ 08003

Certificate Number: 2076851

Effective Date: September 30, 2016

Date of Issuance: October 18, 2023

For Office Use Only:

20231018111224438



NEW JERSEY DIVISION OF CONSUMER AFFAIRS



Cari Fa
Acting Director
Read E

License Information

Accurate as of September 26, 2024 8:47 AM

[Return to Search Results](#)

Name: REMINGTON & VERNICK ENGINEERS

Address: Haddonfield,NJ

Profession/License Type: Engineers & Land Surveyors,Certificate of Authorization

License No: 24GA28003300

License Status: Active

Status Change Reason: License Issuance

Issue Date: 7/26/2002

Expiration Date: 8/31/2026

SPL:

NO Board Actions. For more information contact the New Jersey State Board of Professional Engineers and Land Surveyors (973)504-6

Documents

No Public Documents

Division

- [Division Home](#)
- [Consumer Protection](#)
- [Licensing Boards](#)
- [File a Complaint](#)
- [Adoptions & Rule](#)
- [Proposals](#)
- [Internship](#)
- [Opportunities](#)

Department

- [OAG Home](#)
- [Contact OAG](#)
- [FAQ OAG](#)
- [OAG News](#)
- [Services A to Z](#)
- [Employment](#)

State

- [NJ Home](#)
- [Services A-Z](#)
- [Departments/Agencies](#)
- [FAQs](#)

Legal

- [Legal Statement](#)
- [Privacy Notice](#)
- [Accessibility](#)
- [Statement](#)

RSS

Sign up for New Jersey Division of Consumer Affairs RSS feed: latest information. You can select any category that you are in and any time the website is updated you will receive a notification. [More information about RSS feeds.](#)

DESCRIPTIONS (Continued from Page 1)

A. Property Coverage

National Fire Insurance of Hartford

Policy #: 7018226700

Effective 3/1/2025 - 3/1/2026

Limits:

Real Property: \$10,689,407

Business Personal Property: \$1,687,293

Business Income: \$3,000,000

Valuable Papers: \$1,000,000

Deductible: \$1,000

A. Contractor's Equipment Coverage

National Fire Insurance Of Hartford

Policy Period: 3/1/2025 - 3/1/2026

Policy # 7018226700

Contractors Equipment Coverage:

1. Scheduled Values: \$880,950

2. Equipment Leased, Borrowed Or Rented From Others-Limit: \$50,000 / \$25,000 Maximum Limit Per Item

3. Deductible: \$1,000

F. Contractors' Pollution Liability Insurance

Policy Number: CPYG27417206011

Policy Period: 7/1/2025 - 7/1/2026

Limits: \$5,000,000 Per Pollution Condition Limit of Liability / \$5,000,000 Aggregate Limit of Liability for all Pollution Conditions

1. The Captioned Commercial General Liability Policy includes the following coverage:

a. XCU

b. Contractual Liability

c. Contractual Liability - Railroads is included by amending the definition of an "Insured Contract" when working within 50ft of a Railroad

2. The Captioned Workers Compensation & Employers Liability coverage includes the following coverage on an if any basis:

a. USL&H

4. A Waiver of Subrogation is provided in favor of the Additional Insureds under the captioned Commercial General Liability, Business Automobile Liability, Commercial Umbrella Liability, Workers Compensation & Employers Liability, and Contractors Pollution Liability Coverages if required by written contract & permitted by state law.

5. The captioned Commercial Umbrella Liability policy is following form of the Commercial General Liability, Automobile Liability, and Employers Liability Policies.

6. 30 Days Notice of Cancellation and Non-Renewal, 10 Days Notice in the event of Non-Payment of Premium, will be provided subject to the terms and conditions of the policy.

**Request for Taxpayer
 Identification Number and Certification**

Go to www.irs.gov/FormW9 for instructions and the latest information.

Give form to the
 requester. Do not
 send to the IRS.

Before you begin. For guidance related to the purpose of Form W-9, see *Purpose of Form*, below.

1 Name of entity/individual. An entry is required. (For a sole proprietor or disregarded entity, enter the owner's name on line 1, and enter the business/disregarded entity's name on line 2.)
Remington & Vernick Engineers II, Inc.

2 Business name/disregarded entity name, if different from above.

3a Check the appropriate box for federal tax classification of the entity/individual whose name is entered on line 1. Check only one of the following seven boxes.
 Individual/sole proprietor C corporation S corporation Partnership Trust/estate
 LLC. Enter the tax classification (C = C corporation, S = S corporation, P = Partnership) _____
 Note: Check the "LLC" box above and, in the entry space, enter the appropriate code (C, S, or P) for the tax classification of the LLC, unless it is a disregarded entity. A disregarded entity should instead check the appropriate box for the tax classification of its owner.
 Other (see Instructions) _____

4 Exemptions (codes apply only to certain entities, not individuals; see instructions on page 3):
 Exempt payee code (if any) _____
 Exemption from Foreign Account Tax Compliance Act (FATCA) reporting code (if any) _____
(Applies to accounts maintained outside the United States.)

3b If on line 3a you checked "Partnership" or "Trust/estate," or checked "LLC" and entered "P" as its tax classification, and you are providing this form to a partnership, trust, or estate in which you have an ownership interest, check this box if you have any foreign partners, owners, or beneficiaries. See Instructions

5 Address (number, street, and apt. or suite no.). See instructions.
2059 Springdale Road
6 City, state, and ZIP code
Cherry Hill, NJ 08003
7 List account number(s) here (optional)

Requester's name and address (optional)

Part I Taxpayer Identification Number (TIN)

Enter your TIN in the appropriate box. The TIN provided must match the name given on line 1 to avoid backup withholding. For individuals, this is generally your social security number (SSN). However, for a resident alien, sole proprietor, or disregarded entity, see the instructions for Part I, later. For other entities, it is your employer identification number (EIN). If you do not have a number, see *How to get a TIN*, later.

Social security number

				-					
--	--	--	--	---	--	--	--	--	--

or

Employer identification number

8	1	-	3	3	5	1	8	3	4
---	---	---	---	---	---	---	---	---	---

Note: If the account is in more than one name, see the instructions for line 1. See also *What Name and Number To Give the Requester* for guidelines on whose number to enter.

Part II Certification

Under penalties of perjury, I certify that:

- The number shown on this form is my correct taxpayer identification number (or I am waiting for a number to be issued to me); and
- I am not subject to backup withholding because (a) I am exempt from backup withholding, or (b) I have not been notified by the Internal Revenue Service (IRS) that I am subject to backup withholding as a result of a failure to report all interest or dividends, or (c) the IRS has notified me that I am no longer subject to backup withholding; and
- I am a U.S. citizen or other U.S. person (defined below); and
- The FATCA code(s) entered on this form (if any) indicating that I am exempt from FATCA reporting is correct.

Certification instructions. You must cross out item 2 above if you have been notified by the IRS that you are currently subject to backup withholding because you have failed to report all interest and dividends on your tax return. For real estate transactions, item 2 does not apply. For mortgage interest paid, acquisition or abandonment of secured property, cancellation of debt, contributions to an individual retirement arrangement (IRA), and, generally, payments other than interest and dividends, you are not required to sign the certification, but you must provide your correct TIN. See the instructions for Part II, later.

Sign Here Signature of U.S. person  Date **11/1/2025**

General Instructions

Section references are to the Internal Revenue Code unless otherwise noted.
Future developments. For the latest information about developments related to Form W-9 and its instructions, such as legislation enacted after they were published, go to www.irs.gov/FormW9.

What's New

Line 3a has been modified to clarify how a disregarded entity completes this line. An LLC that is a disregarded entity should check the appropriate box for the tax classification of its owner. Otherwise, it should check the "LLC" box and enter its appropriate tax classification.

New line 3b has been added to this form. A flow-through entity is required to complete this line to indicate that it has direct or indirect foreign partners, owners, or beneficiaries when it provides the Form W-9 to another flow-through entity in which it has an ownership interest. This change is intended to provide a flow-through entity with information regarding the status of its indirect foreign partners, owners, or beneficiaries, so that it can satisfy any applicable reporting requirements. For example, a partnership that has any indirect foreign partners may be required to complete Schedules K-2 and K-3. See the Partnership Instructions for Schedules K-2 and K-3 (Form 1065).

Purpose of Form

An individual or entity (Form W-9 requester) who is required to file an information return with the IRS is giving you this form because they