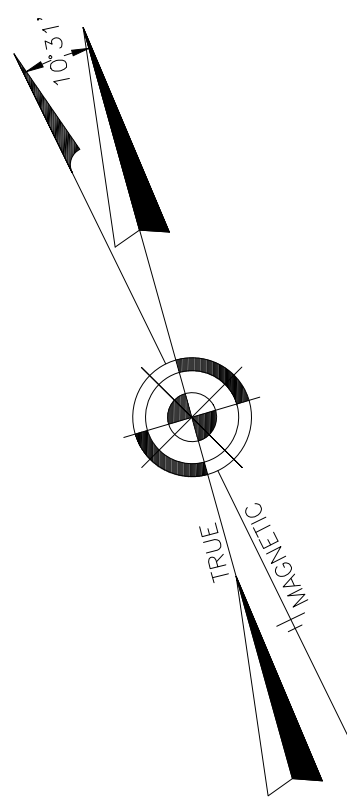


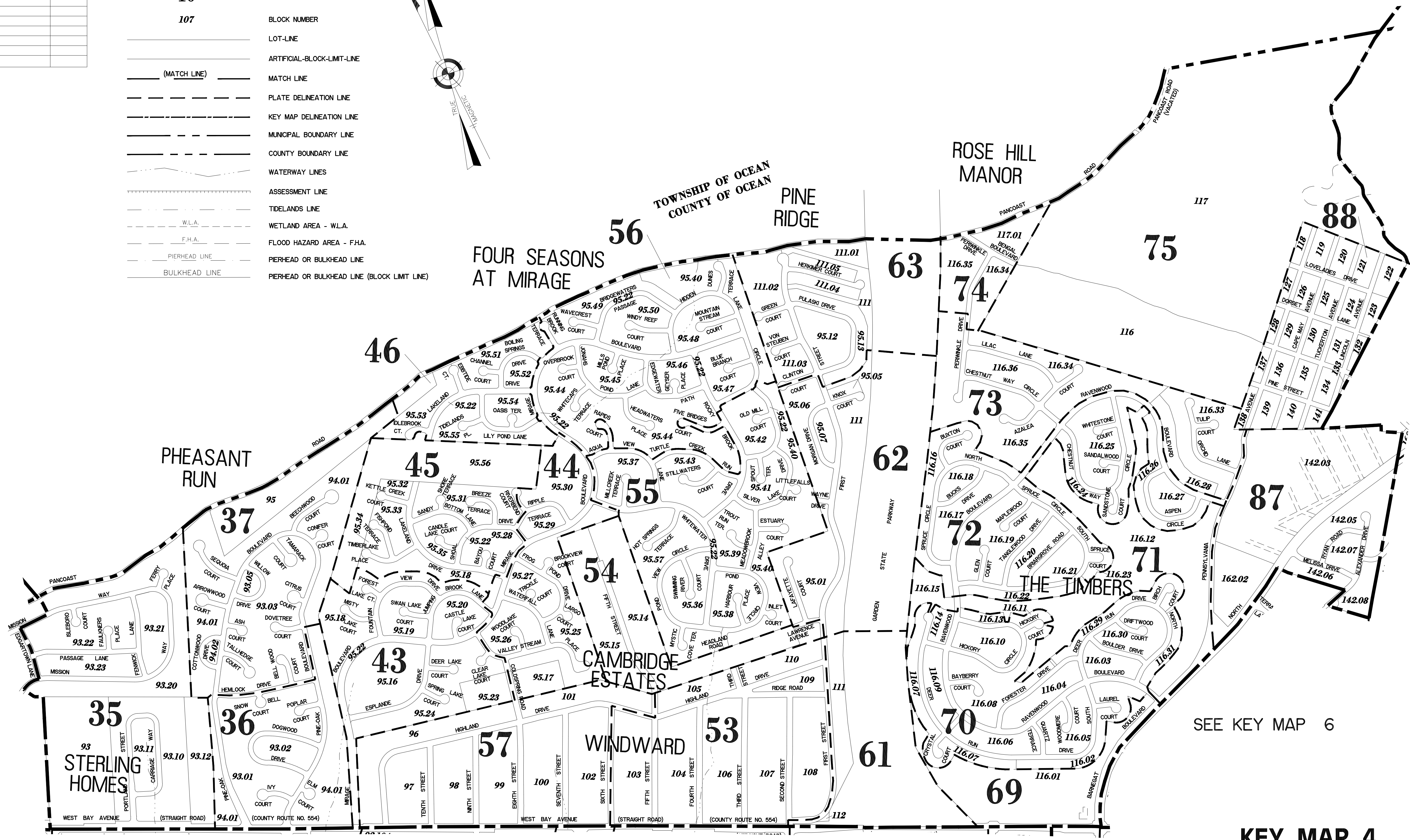
REVISIONS		
DATE	NAME	NO.
5-1-2010	CRAIG F. REMINGTON	23924

KEY MAP

- 10** PLATE NUMBER
- 107** BLOCK NUMBER
- LOT-LINE
- ARTIFICIAL-BLOCK-LIMIT-LINE
- (MATCH LINE) MATCH LINE
- PLATE DELINEATION LINE
- KEY MAP DELINEATION LINE
- MUNICIPAL BOUNDARY LINE
- COUNTY BOUNDARY LINE
- WATERWAY LINES
- ASSESSMENT LINE
- TIDELANDS LINE
- W.L.A. WETLAND AREA - W.L.A.
- F.H.A. FLOOD HAZARD AREA - F.H.A.
- PIERHEAD LINE PIERHEAD OR BULKHEAD LINE
- BULKHEAD LINE PIERHEAD OR BULKHEAD LINE (BLOCK LIMIT LINE)



SEE KEY MAP 2



SEE KEY MAP 3

SEE KEY MAP 6

SEE KEY MAP 6

KEY MAP 4 TOWNSHIP OF BARNEGAT

OCEAN COUNTY NEW JERSEY
SCALE: 1" = 500' DATE: 11-14-2003

CRAIG F. REMINGTON LAND SURVEYOR LIC. NO. 23924



REMINGTON, VERNICK & VENA ENGINEERS
9 ALLEN STREET, TOMS RIVER, N.J. 08753
(732) 286-9220, FAX (732) 505-8416
WEB SITE ADDRESS: WWW.RVE.COM

"THIS TAX MAP PLATE HAS BEEN DIGITALLY DRAWN USING COMPUTER-AIDED DRAFTING/DESIGN (CADD) AND COORDINATE GEOMETRY (COGO). IT IS BASED ON THE ORIGINAL DIGITALLY DRAWN TAX MAP PLATE BEARING THE OFFICIAL NEW JERSEY DIVISION OF TAXATION APPROVAL STAMP WITH APPROVAL DATE (7-31-2006) SERIAL NUMBER (896) AND SIGNATURES OF SIGNERS: JAMES J. COLL, CHIEF, LOCAL ASSESSMENT, SANTO C. DIDONATO, SUPERVISING FIELD REPRESENTATIVE. THE ORIGINAL DIGITALLY DRAWN TAX MAP PLATE WITH THE OFFICIAL APPROVAL STAMP IS ON FILE WITH THE TOWNSHIP OF BARNEGAT ENGINEER."

TO SHOW CONDITIONS AS OF 11-23-2021