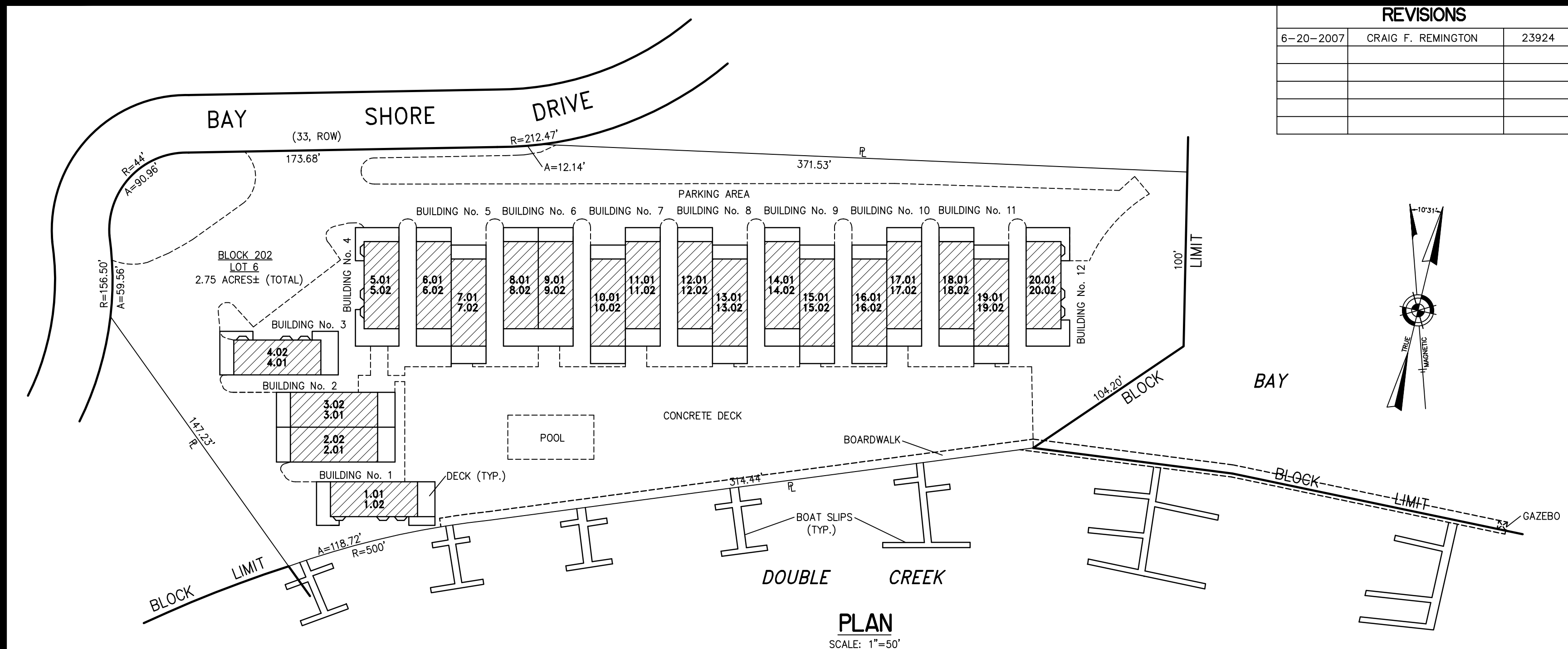
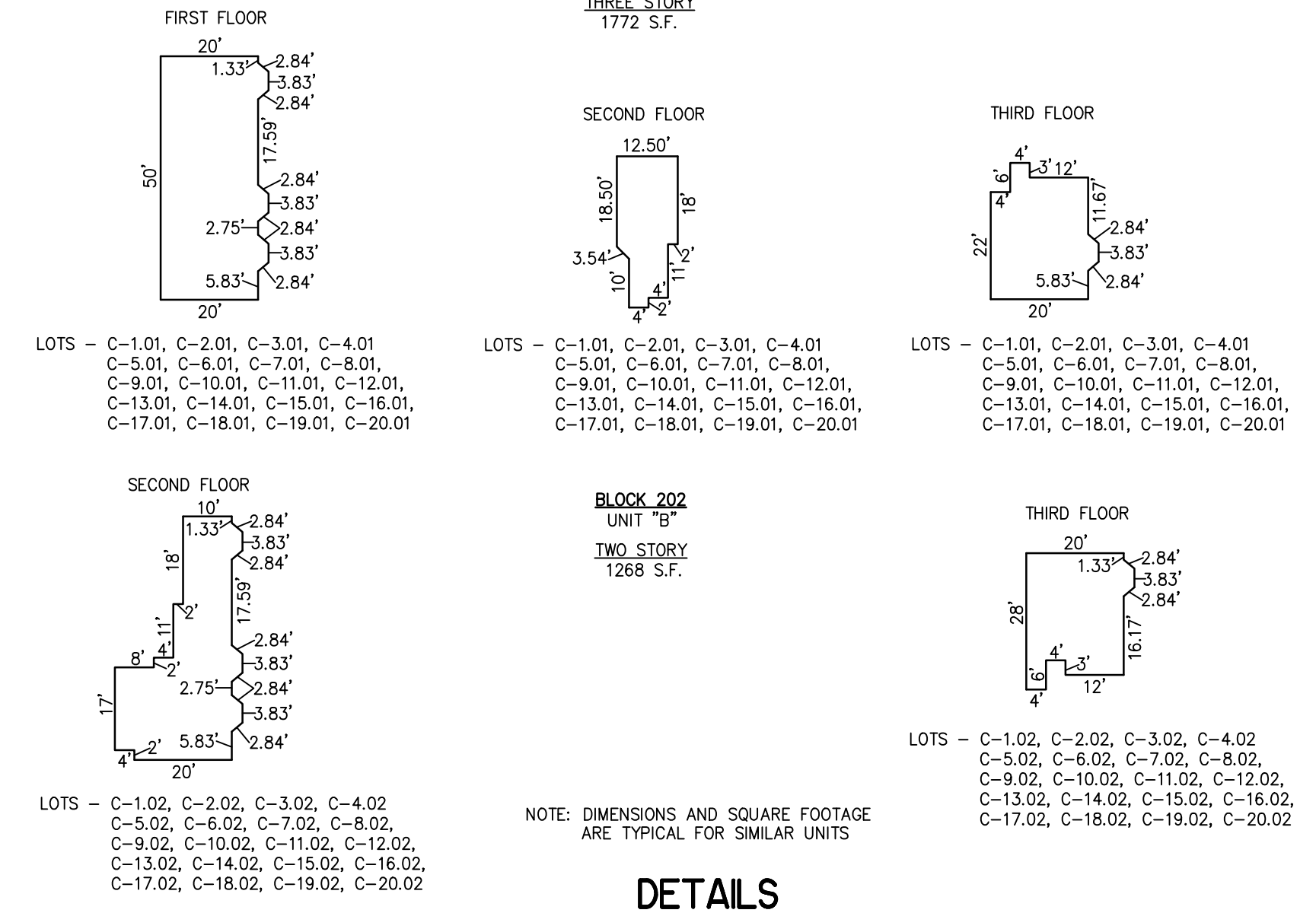
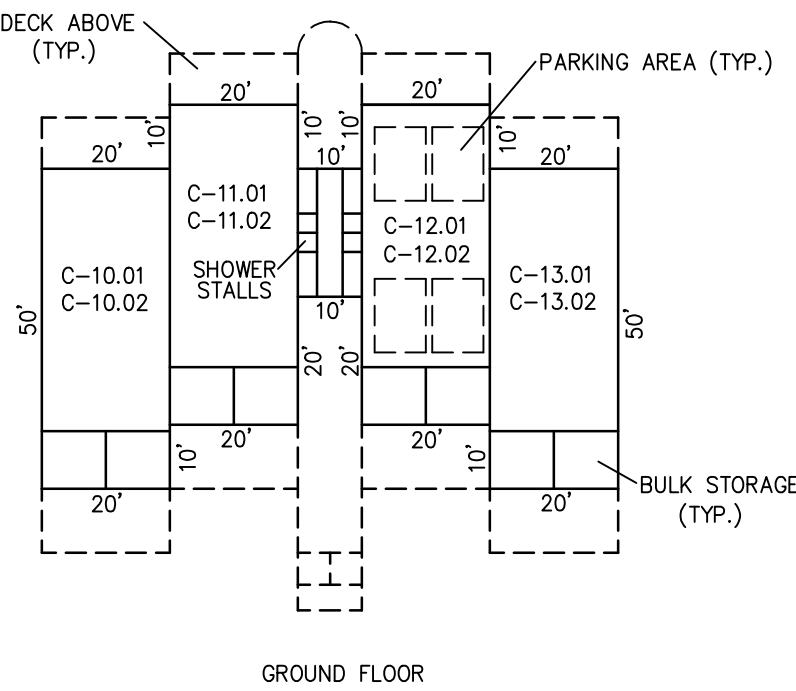
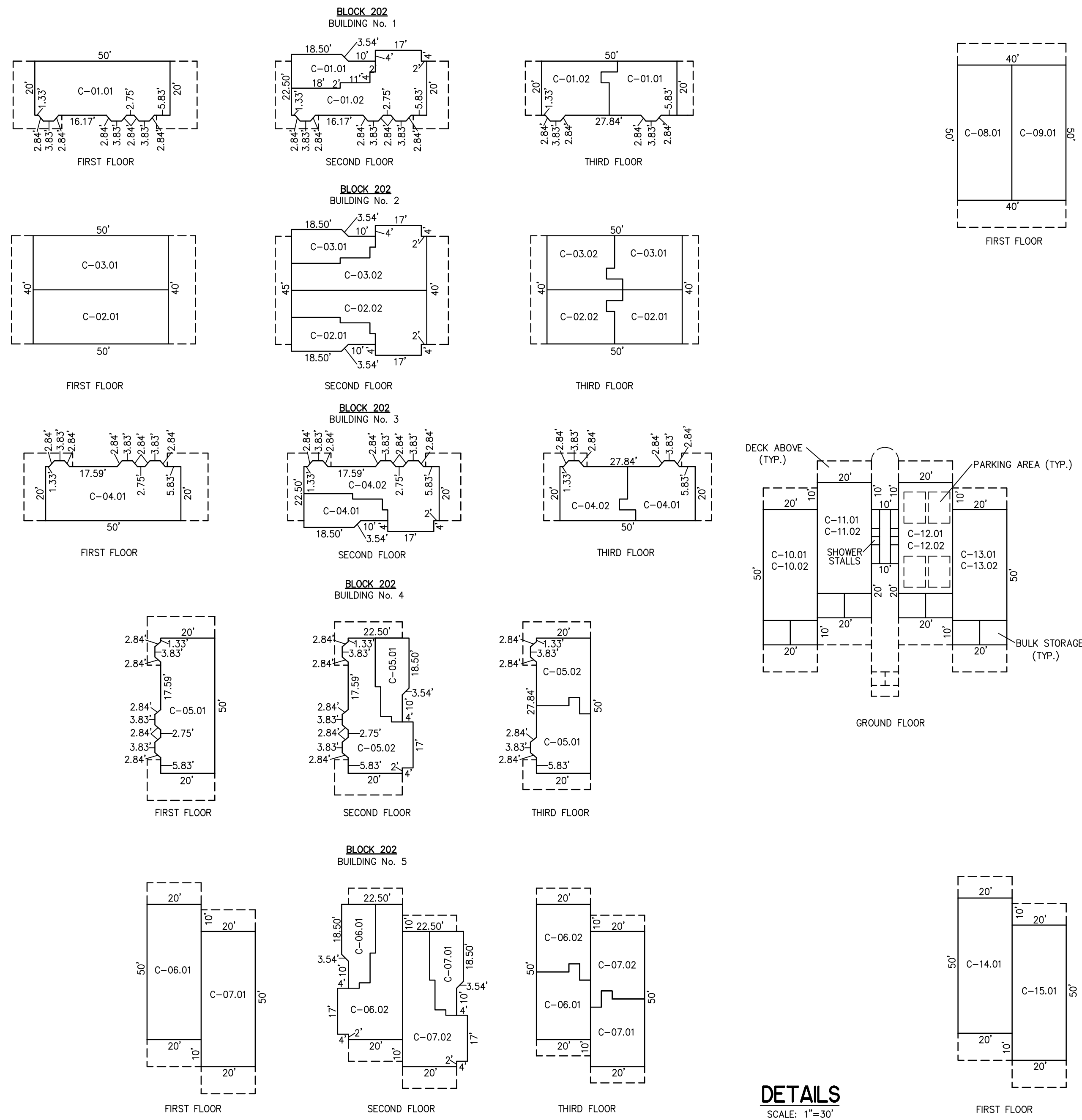
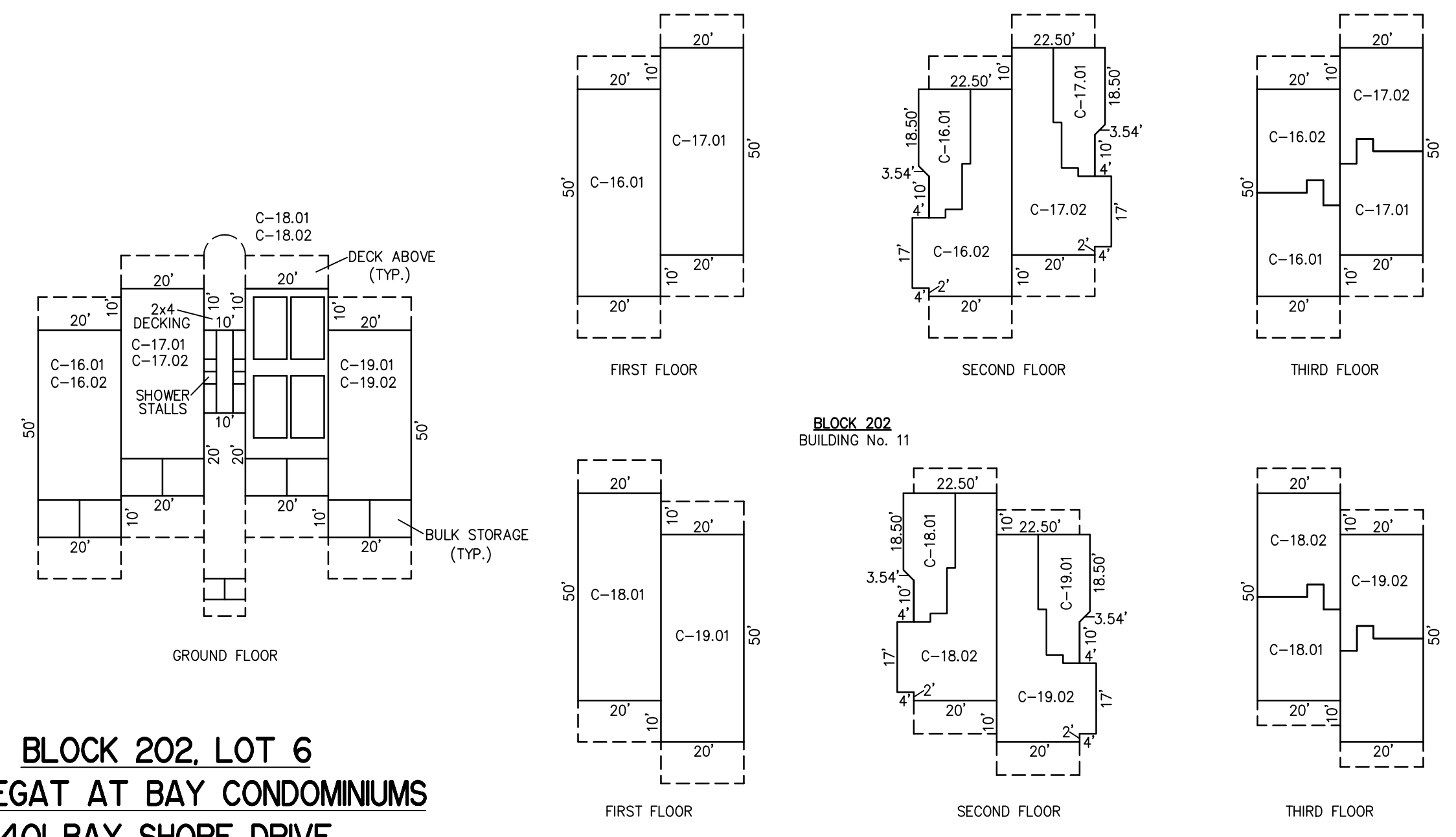


REVISIONS		
6-20-2007	CRAIG F. REMINGTON	23924



**BLOCK 202, LOT 6  
BARNEGAT AT BAY CONDOMINIUMS  
401 BAY SHORE DRIVE  
INSET "G"**



NOTE: DIMENSIONS AND SQUARE FOOTAGE ARE TYPICAL FOR SIMILAR UNITS

**DETAILS**  
SCALE: 1"=30'

**CONDOMINIUM DETAILS AND DIMENSIONS  
BLOCK 202, LOT 6  
SEE PLATE 124**

"THIS TAX MAP PLATE HAS BEEN DIGITALLY DRAWN USING COMPUTER-AIDED DRAFTING/DESIGN (CADD) AND COORDINATE GEOMETRY (COGO). IT IS BASED ON THE ORIGINAL DIGITALLY DRAWN TAX MAP PLATE BEARING THE OFFICIAL NEW JERSEY DIVISION OF TAXATION APPROVAL STAMP WITH APPROVAL DATE (7-31-2006) SERIAL NUMBER (896) AND SIGNATURES OF SIGNERS: JAMES J. COLL, CHIEF LOCAL ASSESSMENT; SANTO C. DIDONATO, SUPERVISING FIELD REPRESENTATIVE. THE ORIGINAL DIGITALLY DRAWN TAX MAP PLATE WITH THE OFFICIAL APPROVAL STAMP IS ON FILE WITH THE TOWNSHIP OF BARNEGAT ENGINEER."

**TAX MAP**  
**TOWNSHIP OF BARNEGAT**  
OCEAN COUNTY NEW JERSEY  
SCALE: NOTED DATE: 5-13-2005  
**CRAIG F. REMINGTON LAND SURVEYOR LIC. NO. 23924**  
**REMINGTON, VERNICK & VENA ENGINEERS**  
9 ALLEN STREET, TOMS RIVER, NJ 08753  
(732) 286-9220, FAX (732) 505-8446  
WEB SITE ADDRESS: WWW.RVVE.COM  
TO SHOW CONDITIONS AS OF 11-23-2011