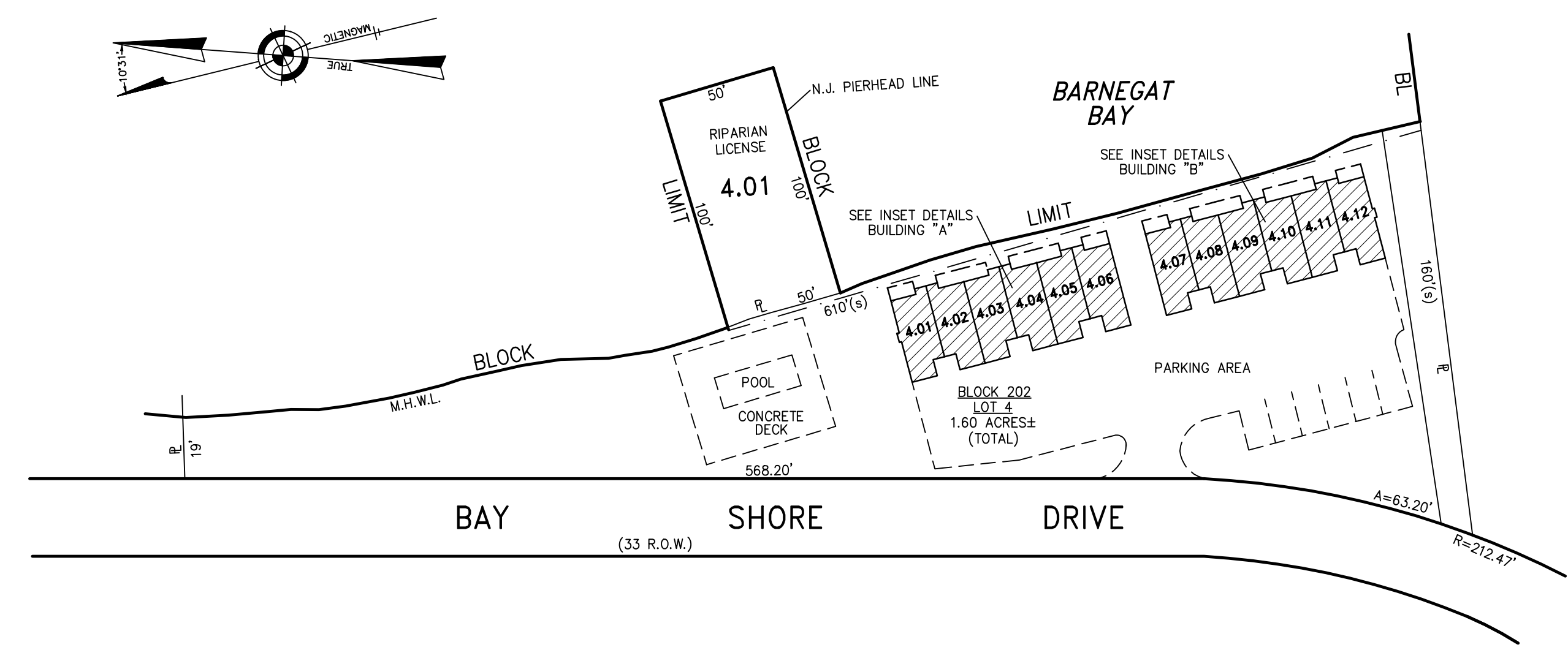
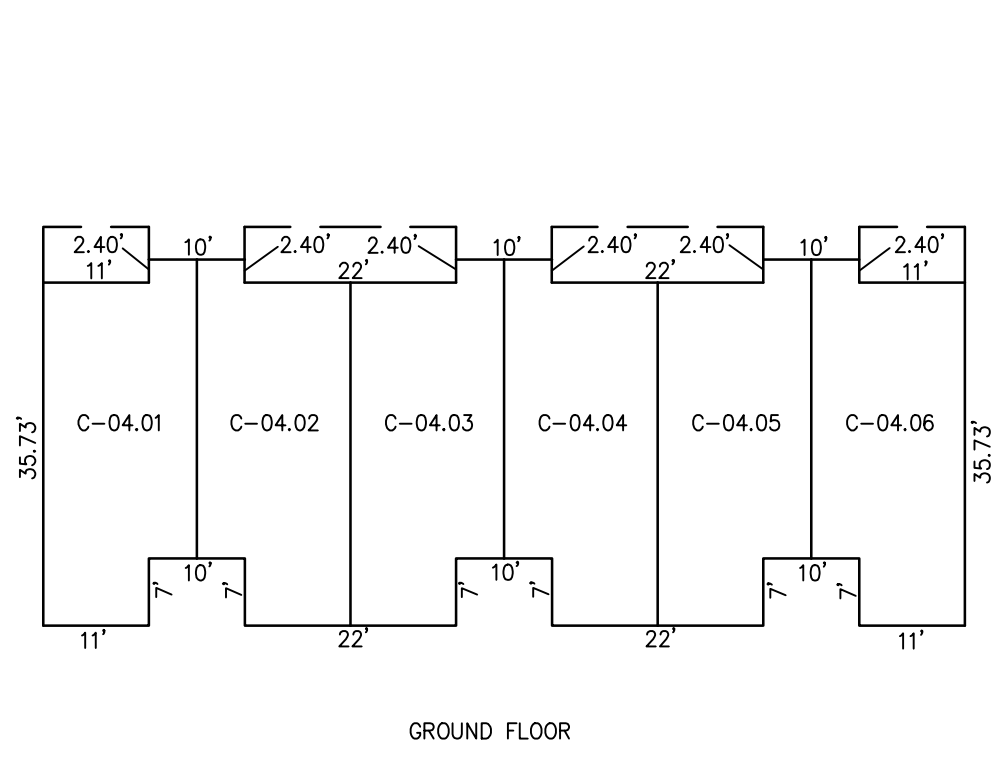


REVISIONS		
6-20-2007	CRAIG F. REMINGTON	23924

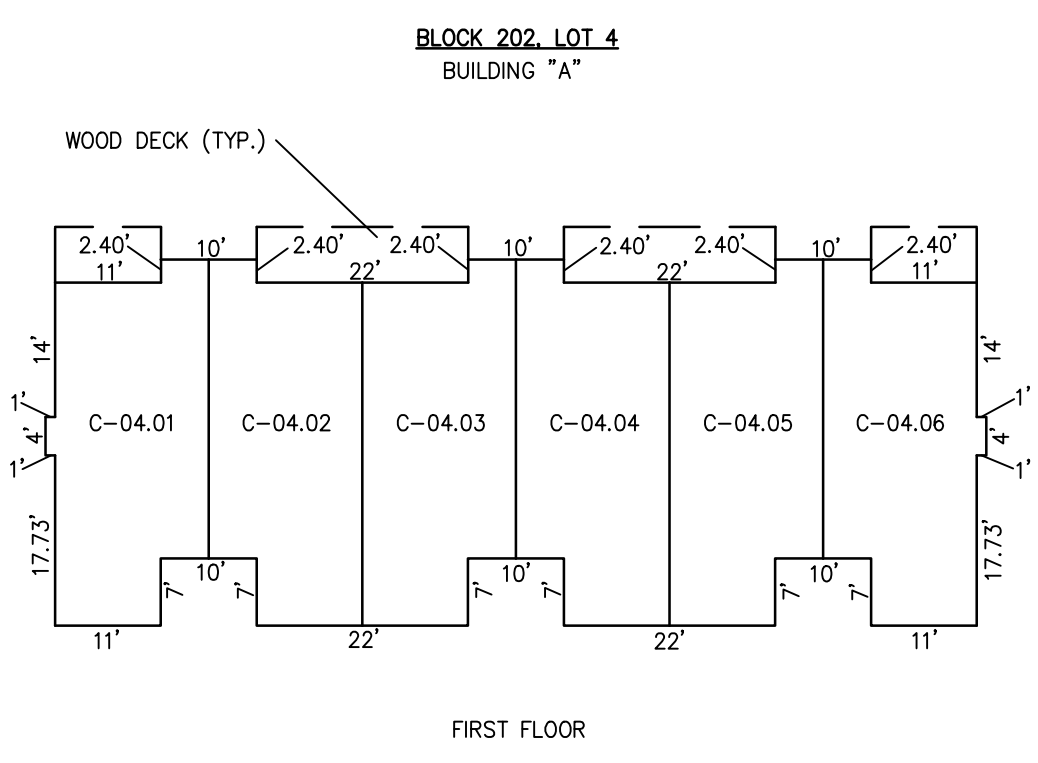


PLAN
SCALE: 1"=50'

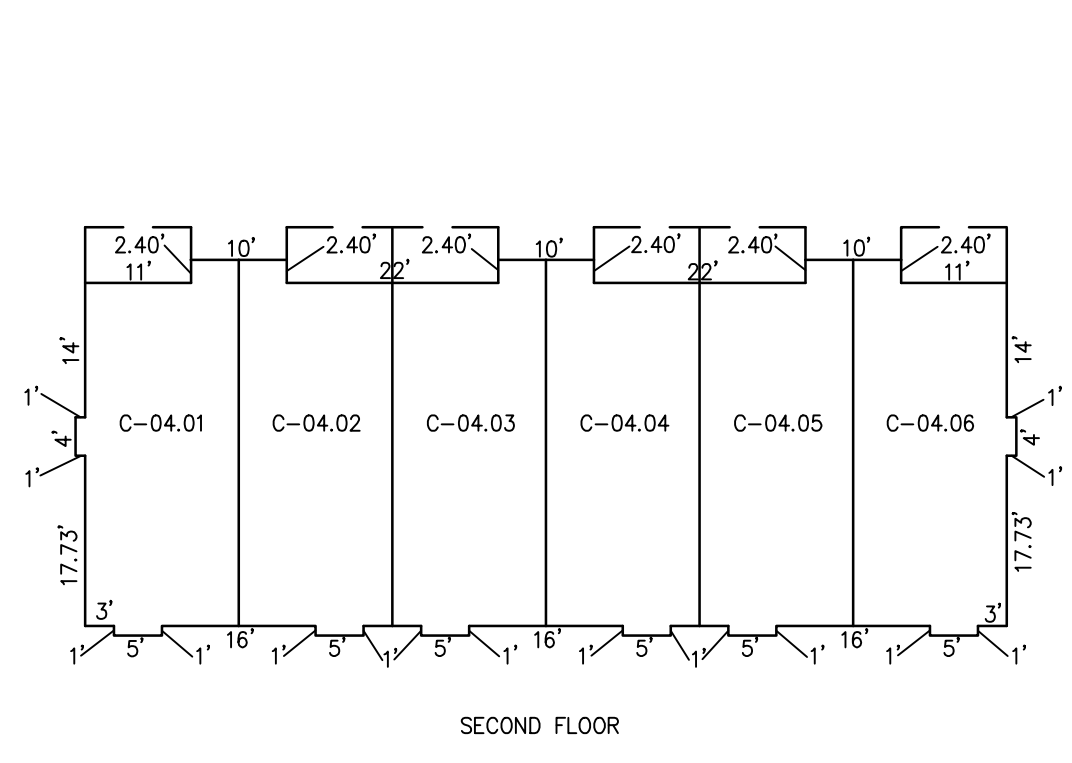
BLOCK 202, LOT 4
BAYSIDE AT BARNEGAT
1605 BAY AVENUE
INSET "E"



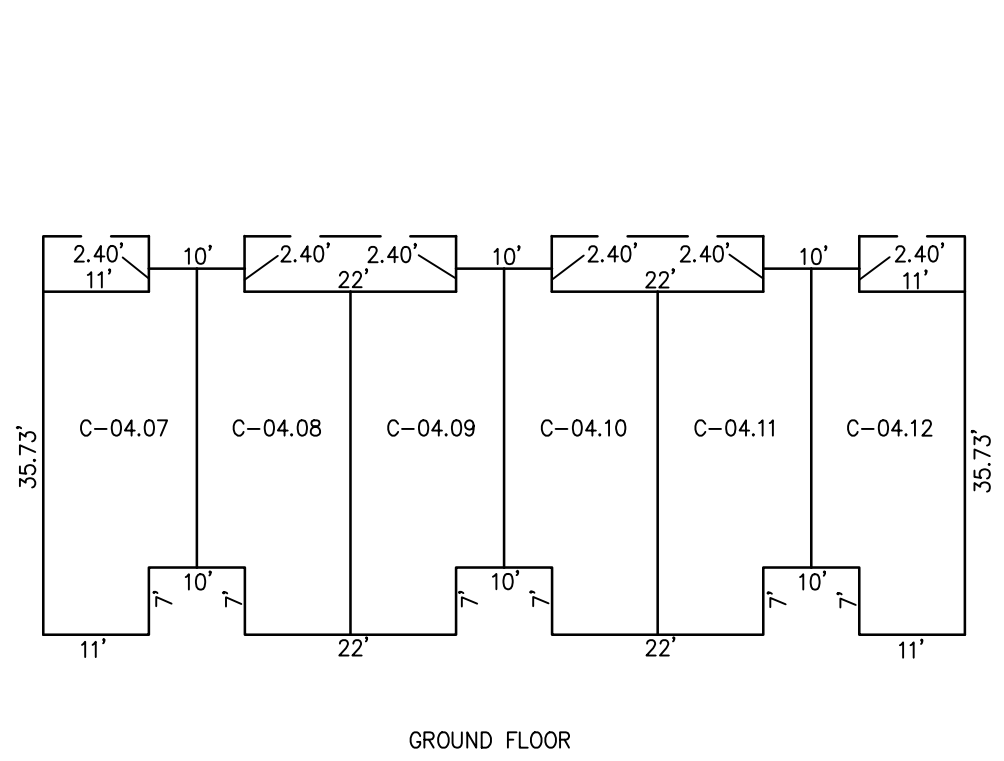
GROUND FLOOR



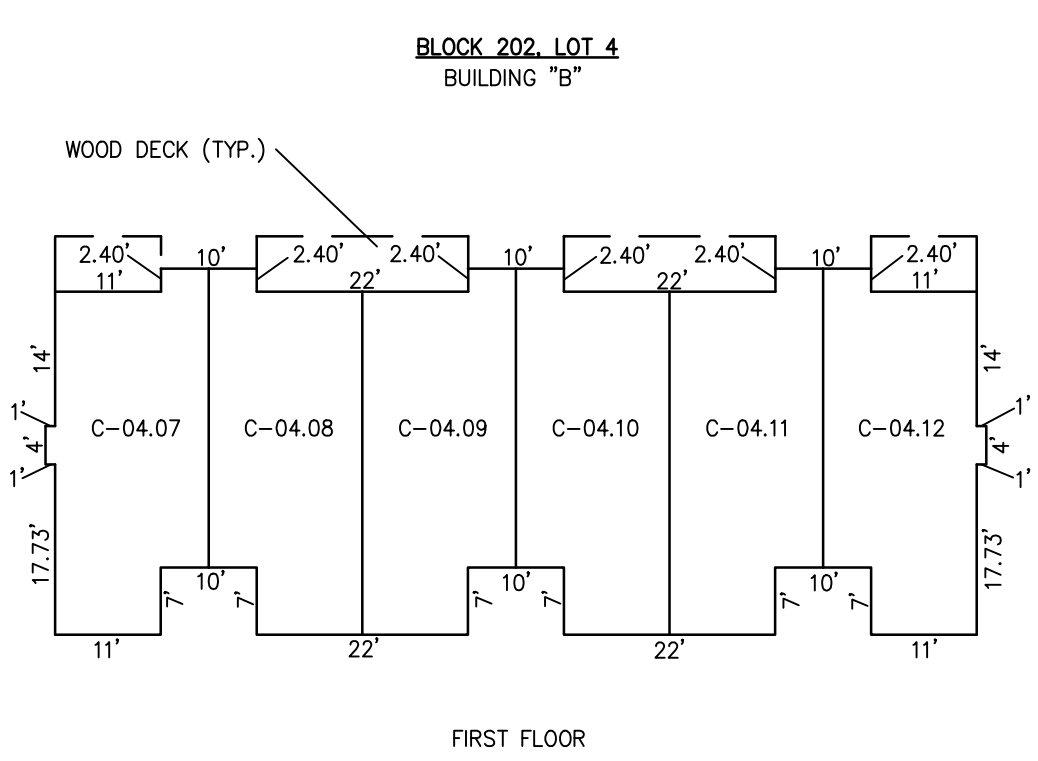
FIRST FLOOR



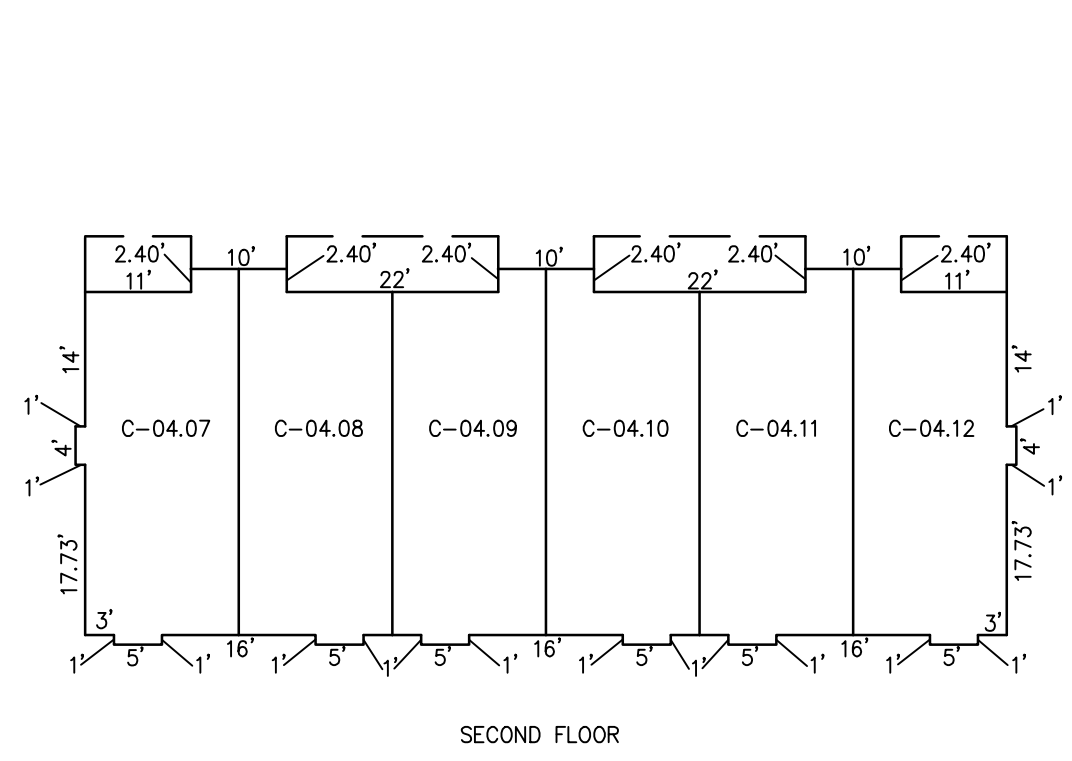
SECOND FLOOR



GROUND FLOOR

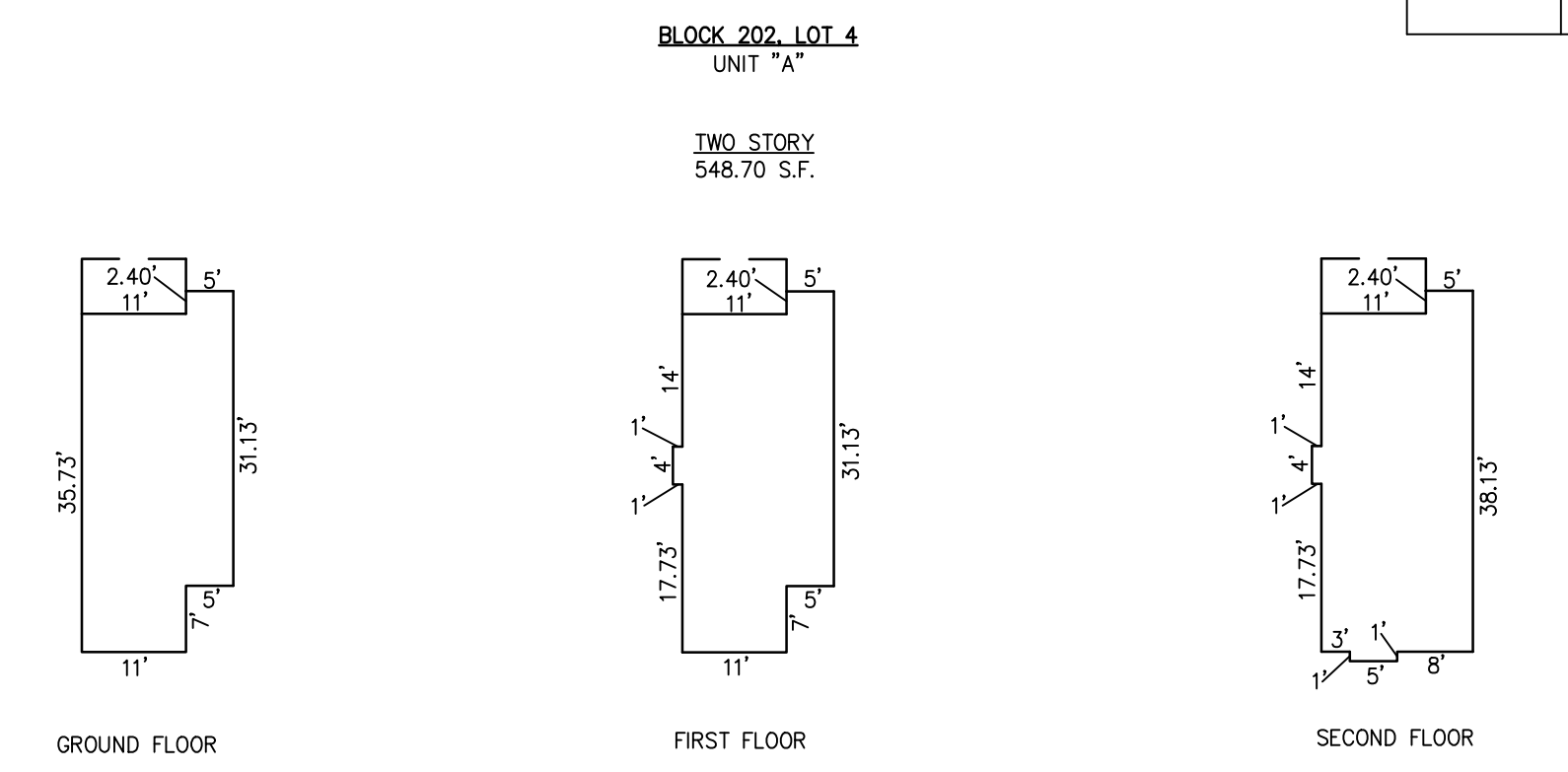


FIRST FLOOR

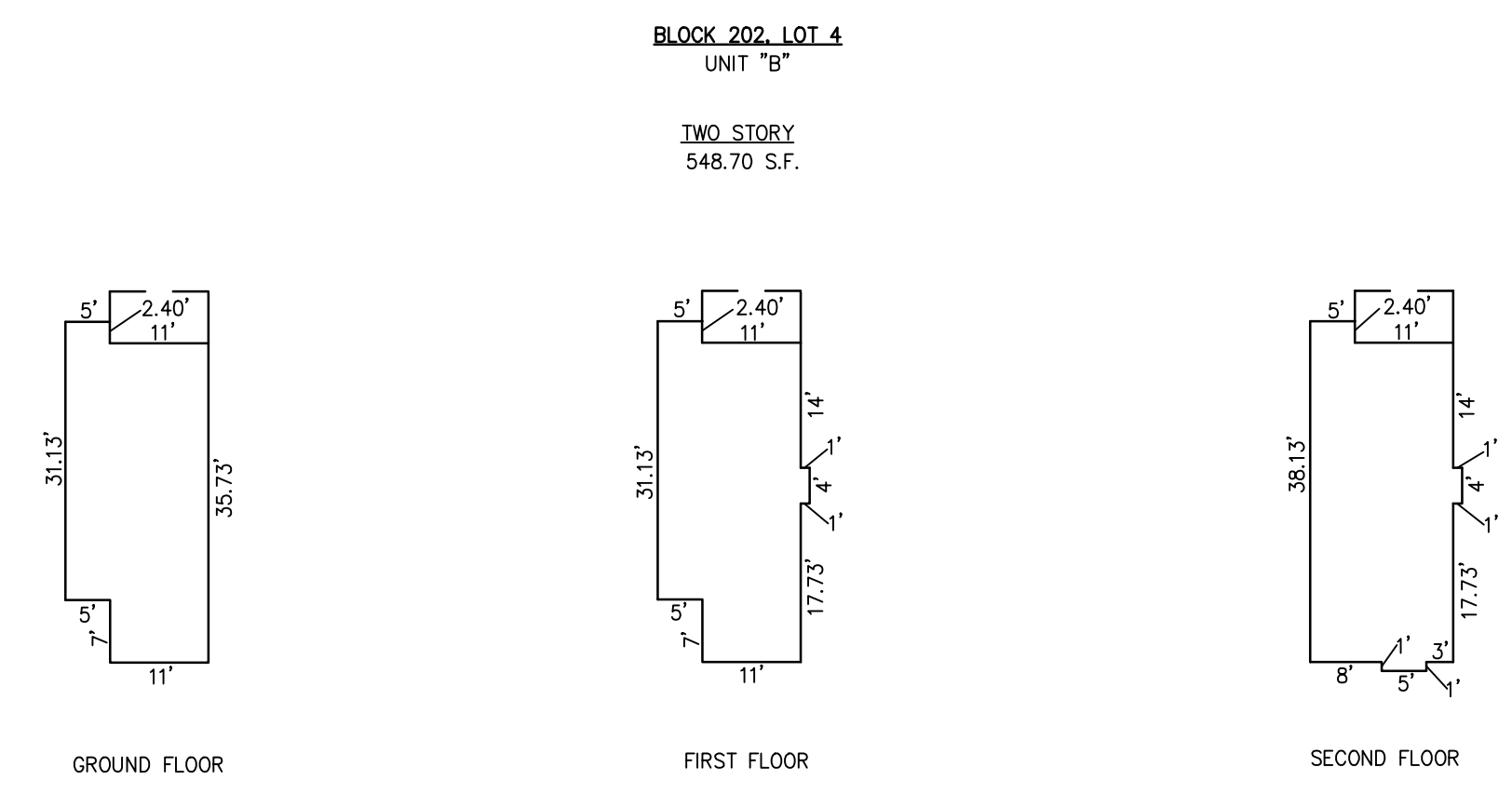


SECOND FLOOR

DETAILS
SCALE: 1"=20'



NOTE: DIMENSIONS AND SQUARE FOOTAGE ARE TYPICAL FOR SIMILAR UNITS



NOTE: DIMENSIONS AND SQUARE FOOTAGE ARE TYPICAL FOR SIMILAR UNITS

DETAILS
SCALE: 1"=20'

CONDOMINIUM DETAILS AND DIMENSIONS
BLOCK 202, LOT 4
SEE PLATE I24

TAX MAP
TOWNSHIP OF BARNEGAT

OCEAN COUNTY NEW JERSEY
SCALE: NOTED DATE: 5-19-2005

CRAIG F. REMINGTON LAND SURVEYOR LIC. NO. 23924

REMINGTON, VERNICK & VENA ENGINEERS
24 GA. 28003300
9 ALLEN STREET, TOMS RIVER, NJ 08753
(732) 286-9220, FAX (732) 505-9416
WEB SITE ADDRESS: WWW.RVVE.COM

TO SHOW CONDITIONS AS OF 11-23-2021

"THIS TAX MAP PLATE HAS BEEN DIGITALLY DRAWN USING COMPUTER-AIDED DRAFTING/DESIGN (CADD) AND COORDINATE GEOMETRY (COGO). IT IS BASED ON THE ORIGINAL DIGITALLY DRAWN TAX MAP PLATE BEARING THE OFFICIAL NEW JERSEY DIVISION OF TAXATION APPROVAL STAMP WITH APPROVAL DATE (7-31-2006) SERIAL NUMBER (896) AND SIGNATURES OF SIGNERS' JAMES J. COLL, CHIEF, LOCAL ASSESSMENT, SANTO C. DIDONATO, SUPERVISING FIELD REPRESENTATIVE. THE ORIGINAL DIGITALLY DRAWN TAX MAP PLATE WITH THE OFFICIAL APPROVAL STAMP IS ON FILE WITH THE TOWNSHIP OF BARNEGAT ENGINEER."