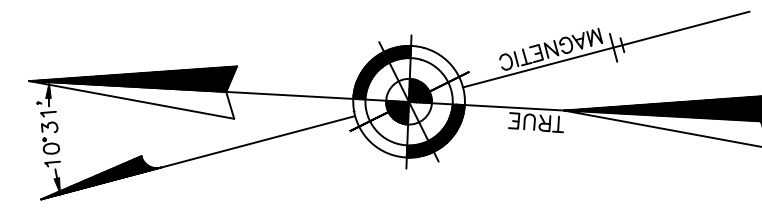


REVISIONS		
6-20-2007	CRAIG F. REMINGTON	23924



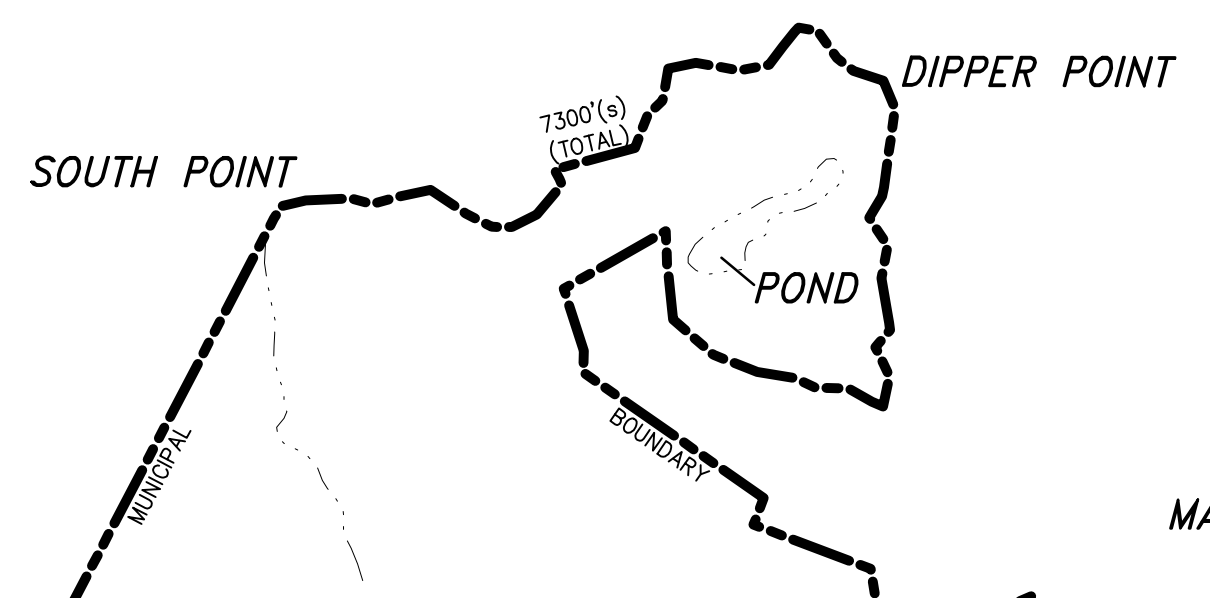
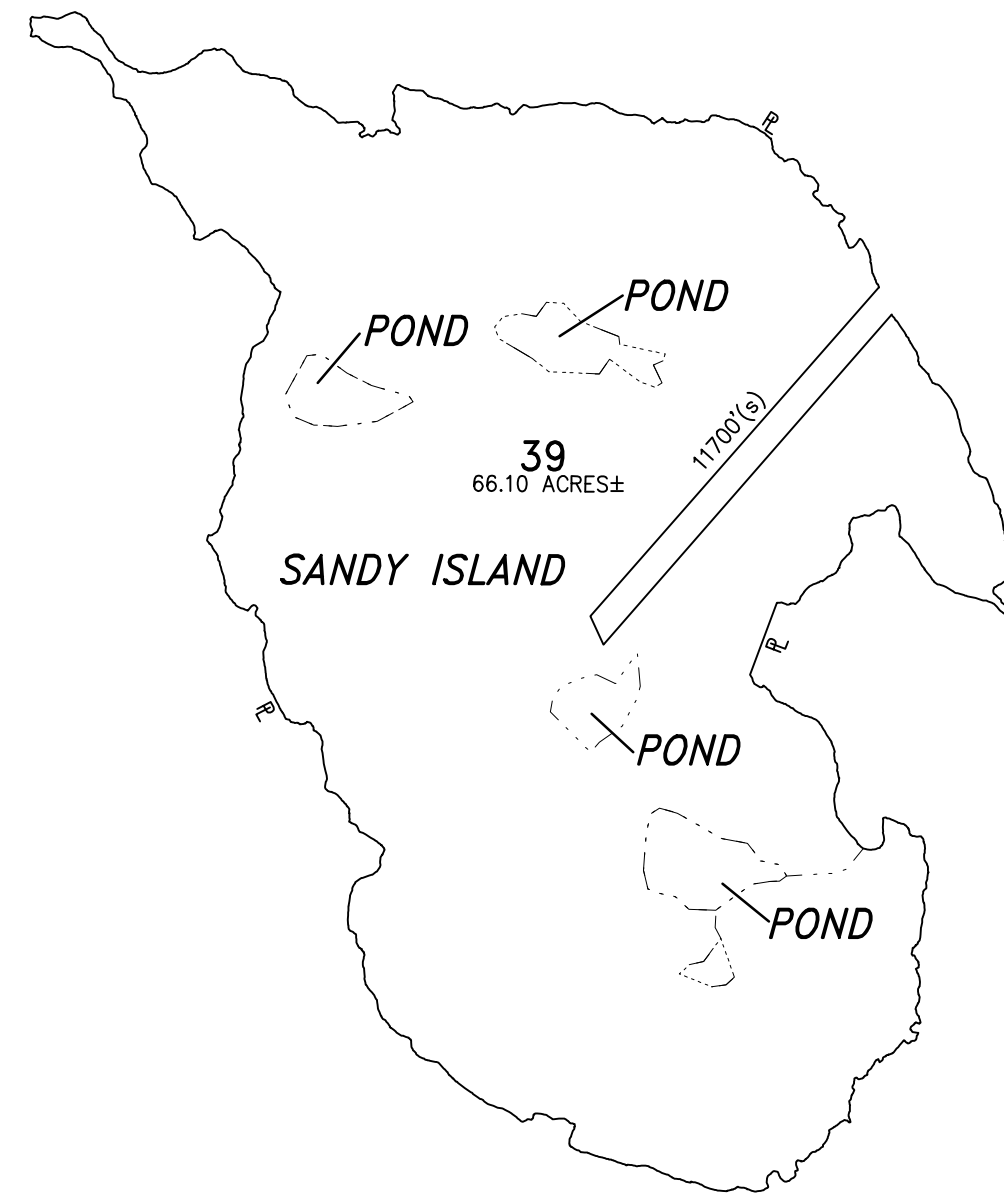
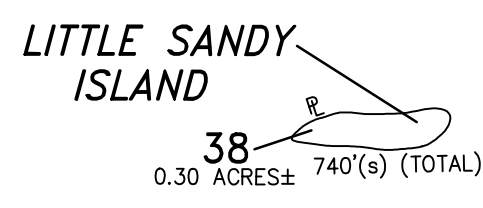
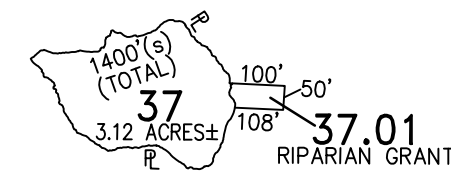
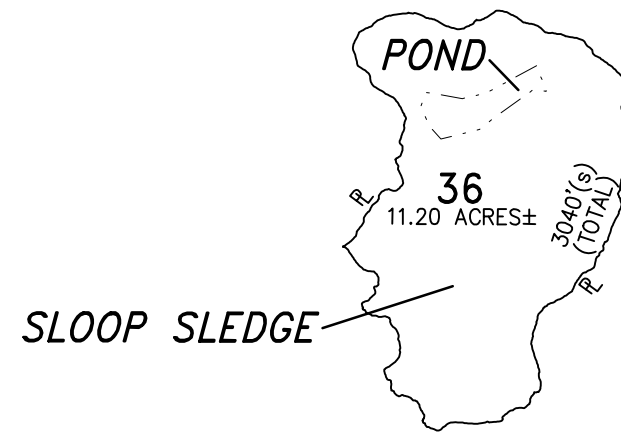
**TOWNSHIP OF LONG BEACH**  
**COUNTY OF OCEAN**

**BOROUGH OF HARVEY CEDARS**  
**COUNTY OF OCEAN**

**267**

*BARNEGAT BAY*

KEYMAP 7



**TOWNSHIP OF STAFFORD**  
**COUNTY OF OCEAN**

**TOWNSHIP OF STAFFORD**  
**COUNTY OF OCEAN**

MATCH LINE  
24600' (s)

MATCH LINE  
7500' (s)

SHEET 131

"THIS TAX MAP PLATE HAS BEEN DIGITALLY DRAWN USING COMPUTER-AIDED DRAFTING/DESIGN (CADD) AND COORDINATE GEOMETRY (COGO). IT IS BASED ON THE ORIGINAL DIGITALLY DRAWN TAX MAP PLATE BEARING THE OFFICIAL NEW JERSEY DIVISION OF TAXATION APPROVAL STAMP WITH APPROVAL DATE (7-31-2006) SERIAL NUMBER (896) AND SIGNATURES OF SIGNERS' JAMES J. COLL, CHIEF, LOCAL ASSESSMENT; SANTO C. DIDONATO, SUPERVISING FIELD REPRESENTATIVE. THE ORIGINAL DIGITALLY DRAWN TAX MAP PLATE WITH THE OFFICIAL APPROVAL STAMP IS ON FILE WITH THE TOWNSHIP OF BARNEGAT ENGINEER."

**TAX MAP**  
**TOWNSHIP OF BARNEGAT**

OCEAN COUNTY NEW JERSEY  
SCALE: 1" = 400' DATE: 5-6-2005

**CRAIG F. REMINGTON LAND SURVEYOR LIC. NO. 23924**

**REMINGTON, VERNICK & VENA ENGINEERS**  
24 GA 28003300  
9 ALLEN STREET, TOMS RIVER, N.J. 08753  
(732) 266-9220, FAX (732) 505-8446  
WEB SITE ADDRESS: WWW.RVVE.COM

TO SHOW CONDITIONS AS OF 11-23-2021