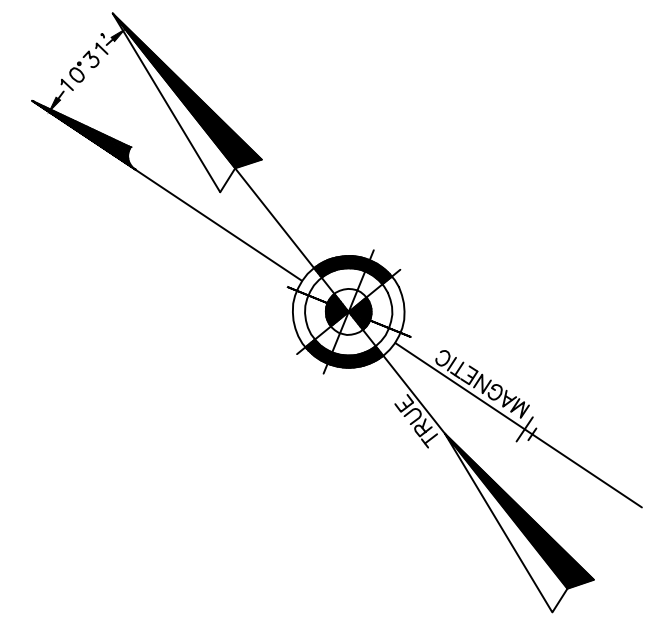


REVISIONS		
11-27-2006	CRAIG F. REMINGTON	23924
6-20-2007	CRAIG F. REMINGTON	23924
10-15-2010	CRAIG F. REMINGTON	23924
12-31-2013	CRAIG F. REMINGTON	23924
11-28-2017	CHARLES E. ADAMSON	42627



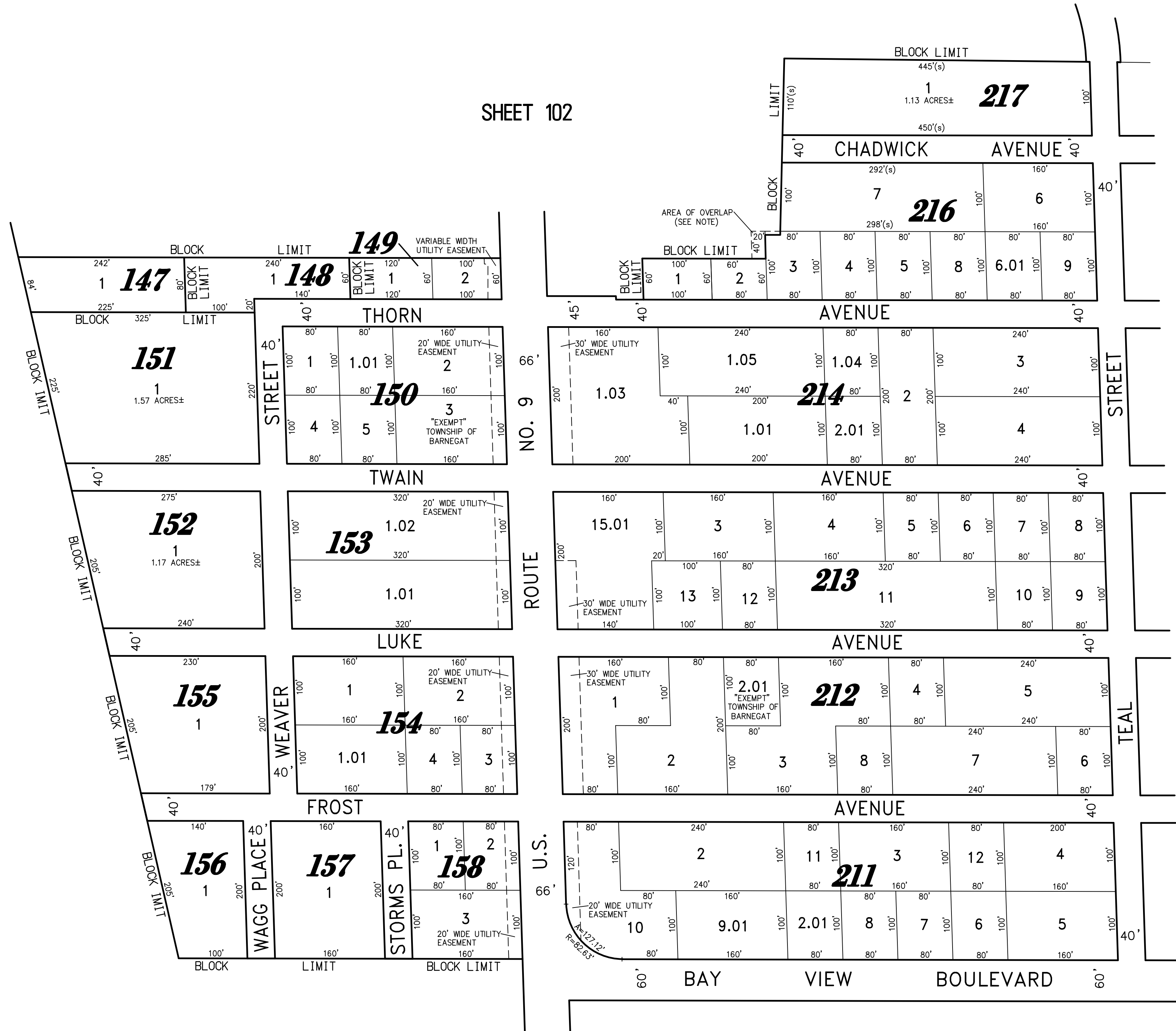
SHEET 103

SHEET 102

SHEET 77

SHEET 118

SHEET 110



NOTE  
 THE OVERLAPPING LINES & DIMENSIONS SHOWN ARE PLOTTED IN ACCORDANCE WITH THE METES & BOUNDS DESCRIPTIONS APPEARING IN THE LAST DEED OF RECORD FOR EACH PARCEL & DO NOT PURPORT TO REPRESENT TITLE OR OWNERSHIP IN ANY MANNER. THESE SITUATIONS ARE SUBJECT TO SOLUTION BY THE PROPERTY OWNERS CONCERNED.

**TAX MAP**  
**TOWNSHIP OF BARNEGAT**

OCEAN COUNTY NEW JERSEY  
 SCALE: 1" = 100' DATE: 3-16-05

CRAIG F. REMINGTON LAND SURVEYOR LIC. NO. 23924



**REMINGTON, VERNICK & VENA ENGINEERS**  
 9 ALLEN STREET, TOMS RIVER, N.J. 08753  
 (732) 286-9220, FAX (732) 505-9446  
 WEB SITE ADDRESS: WWW.RVE.COM

24 GA 28003300

TO SHOW CONDITIONS AS OF 11-23-2021

"THIS TAX MAP PLATE HAS BEEN DIGITALLY DRAWN USING COMPUTER-AIDED DRAFTING/DESIGN (CADD) AND COORDINATE GEOMETRY (COGO). IT IS BASED ON THE ORIGINAL DIGITALLY DRAWN TAX MAP PLATE BEARING THE OFFICIAL NEW JERSEY DIVISION OF TAXATION APPROVAL STAMP WITH APPROVAL DATE (7-31-2006) SERIAL NUMBER (896) AND SIGNATURES OF SIGNERS' JAMES J. COLL, CHIEF, LOCAL ASSESSMENT, SANTO C. DIDONATO, SUPERVISING FIELD REPRESENTATIVE. THE ORIGINAL DIGITALLY DRAWN TAX MAP PLATE WITH THE OFFICIAL APPROVAL STAMP IS ON FILE WITH THE TOWNSHIP OF BARNEGAT ENGINEER."