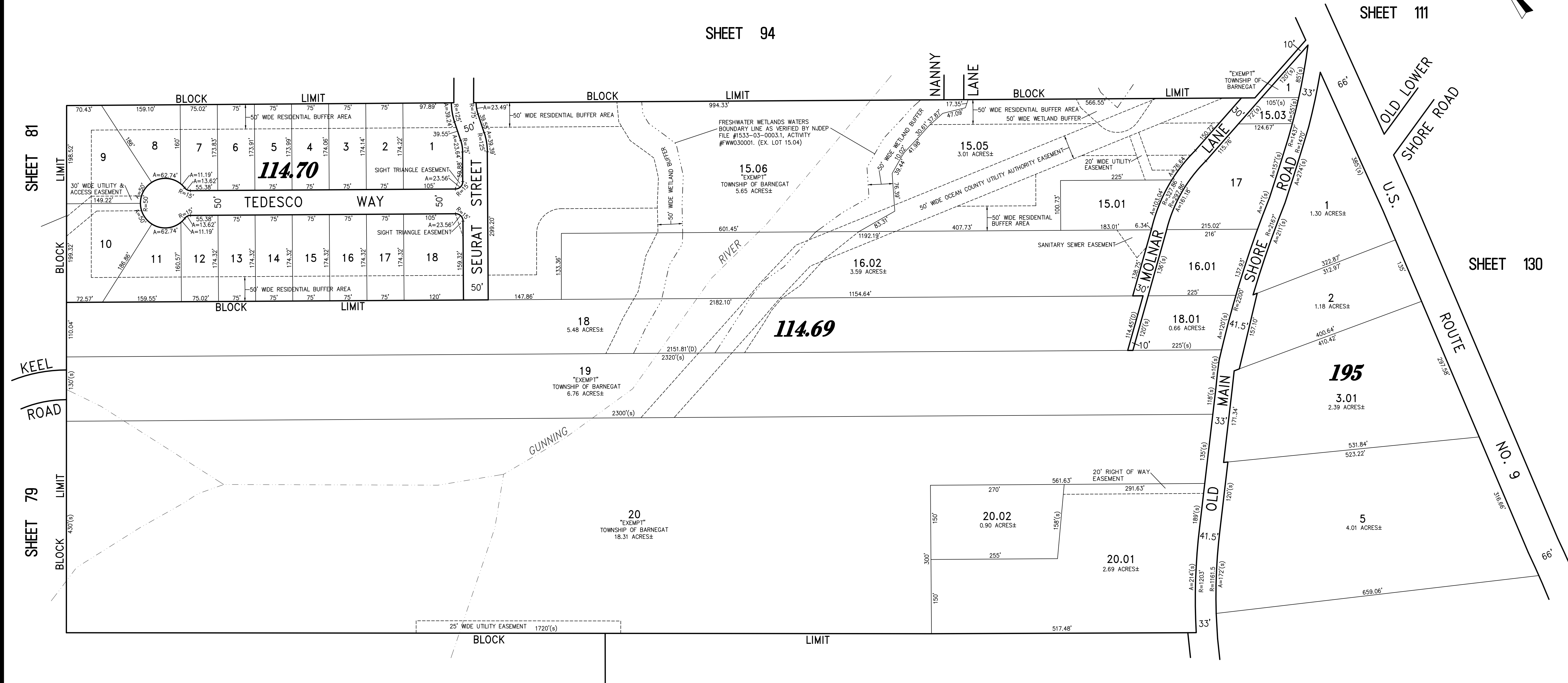
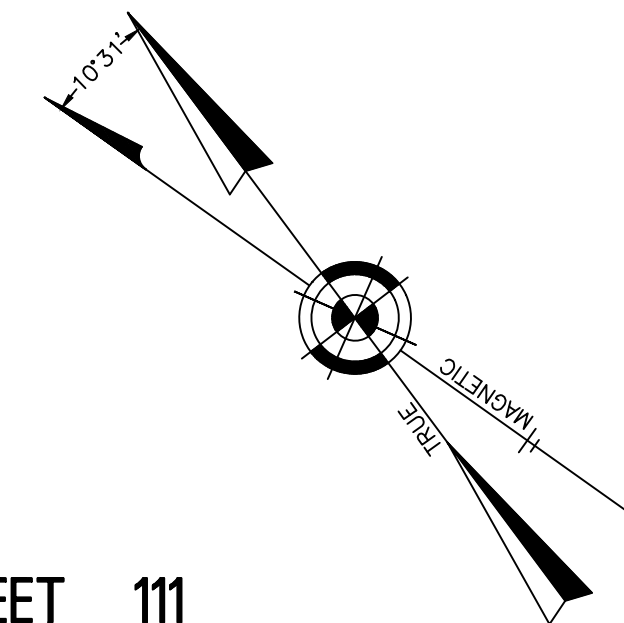



REVISIONS			
6-20-2007	CRAIG F. REMINGTON	23924	
5-31-2011	CRAIG F. REMINGTON	23924	
12-28-2018	CHARLES E. ADAMSON	42627	



SHEET 81      SHEET 94      SHEET 111      SHEET 130      SHEET 79      SHEET 92

"THIS TAX MAP PLATE HAS BEEN DIGITALLY DRAWN USING COMPUTER-AIDED DRAFTING/DESIGN (CADD) AND COORDINATE GEOMETRY (COGO). IT IS BASED ON THE ORIGINAL DIGITALLY DRAWN TAX MAP PLATE BEARING THE OFFICIAL NEW JERSEY DIVISION OF TAXATION APPROVAL STAMP WITH APPROVAL DATE (7-31-2006) SERIAL NUMBER (896) AND SIGNATURES OF SIGNERS: JAMES J. COLL, CHIEF LOCAL ASSESSMENT, SANTO C. DIDONATO, SUPERVISING FIELD REPRESENTATIVE. THE ORIGINAL DIGITALLY DRAWN TAX MAP PLATE WITH THE OFFICIAL APPROVAL STAMP IS ON FILE WITH THE TOWNSHIP OF BARNEGAT ENGINEER."

**TAX MAP**  
**TOWNSHIP OF BARNEGAT**  
 OCEAN COUNTY    NEW JERSEY  
 SCALE: 1" = 100'    DATE: 12-10-2004  
**CRAIG F. REMINGTON LAND SURVEYOR LIC. NO. 23924**  
 **REMINGTON, VERNICK & VENA ENGINEERS**  
 9 ALLEN STREET, TOMS RIVER, N.J. 08753  
 (732) 296-9220, FAX (732) 505-6446  
 WEB SITE ADDRESS: WWW.RVVE.COM  
 TO SHOW CONDITIONS AS OF 11-23-2021