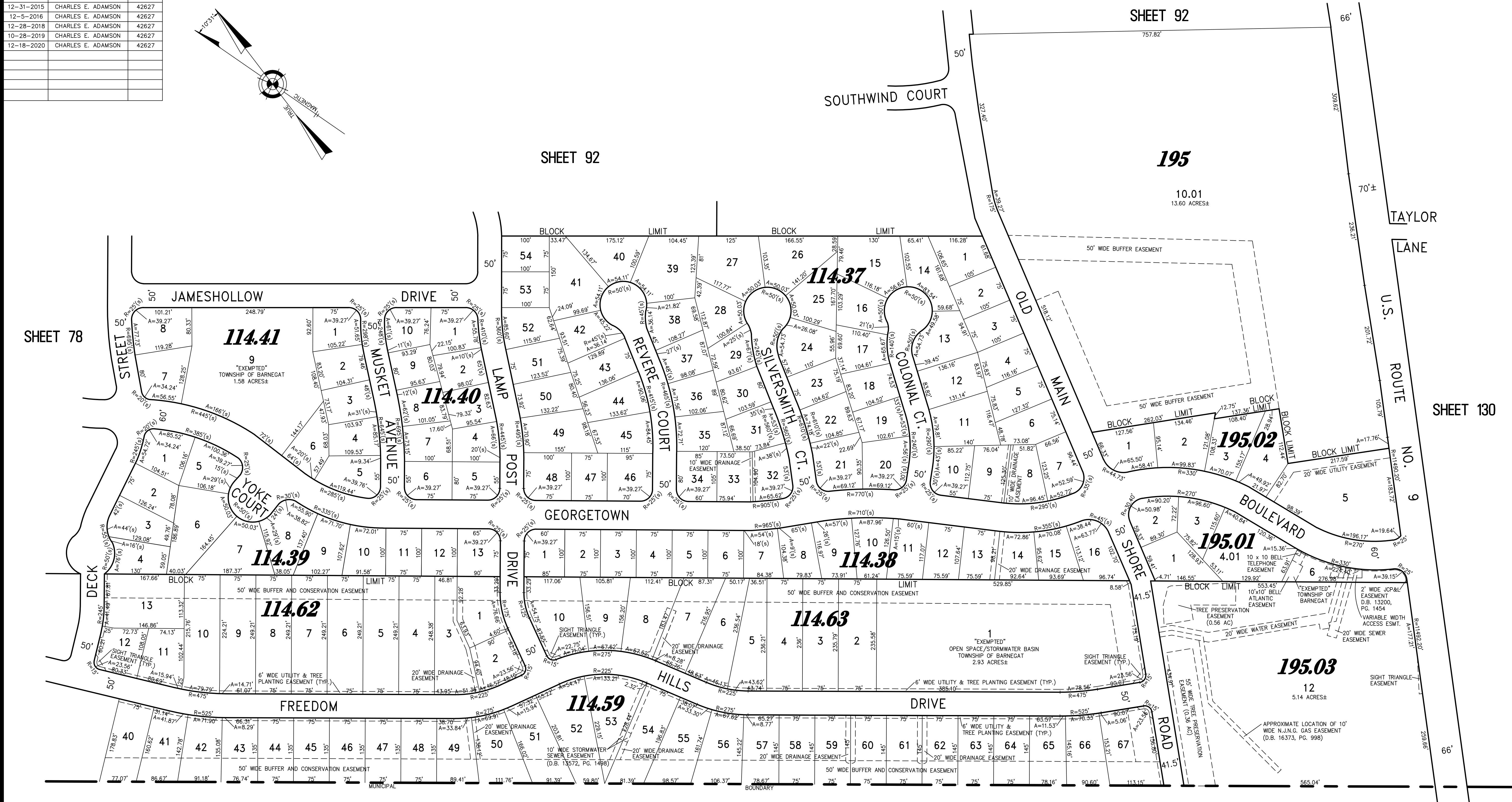
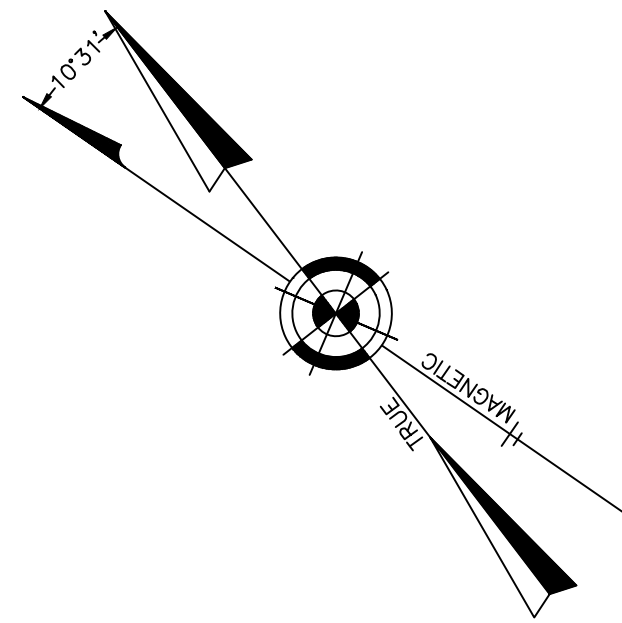


REVISIONS		
12-31-2008	CRAIG F. REMINGTON	23924
12-31-2015	CHARLES E. ADAMSON	42627
12-5-2016	CHARLES E. ADAMSON	42627
12-28-2018	CHARLES E. ADAMSON	42627
10-28-2019	CHARLES E. ADAMSON	42627
12-18-2020	CHARLES E. ADAMSON	42627



TOWNSHIP OF STAFFORD  
 COUNTY OF OCEAN

TAX MAP  
 TOWNSHIP OF BARNEGAT

OCEAN COUNTY NEW JERSEY  
 SCALE: 1" = 100' DATE: 12-07-2004  
 CRAIG F. REMINGTON LAND SURVEYOR LIC. NO. 23924

"THIS TAX MAP PLATE HAS BEEN DIGITALLY DRAWN USING COMPUTER-AIDED DRAFTING/DESIGN (CADD) AND COORDINATE GEOMETRY (COG). IT IS BASED ON THE ORIGINAL DIGITALLY DRAWN TAX MAP PLATE BEARING THE OFFICIAL NEW JERSEY DIVISION OF TAXATION APPROVAL STAMP WITH APPROVAL DATE (7-31-2006) SERIAL NUMBER (896) AND SIGNATURES OF SIGNERS JAMES J. COLL, CHIEF, LOCAL ASSESSMENT, SAANTO C. DIDONATO, SUPERVISING FIELD REPRESENTATIVE, THE ORIGINAL DIGITALLY DRAWN TAX MAP PLATE WITH THE OFFICIAL APPROVAL STAMP IS ON FILE WITH THE TOWNSHIP OF BARNEGAT ENGINEER."



REMINGTON, VERNICK & VENA ENGINEERS  
 9 ALLEN STREET, TOMS RIVER, NJ 08753  
 (732) 286-9220, FAX (732) 505-8416  
 WEB SITE ADDRESS: WWW.RVVE.COM