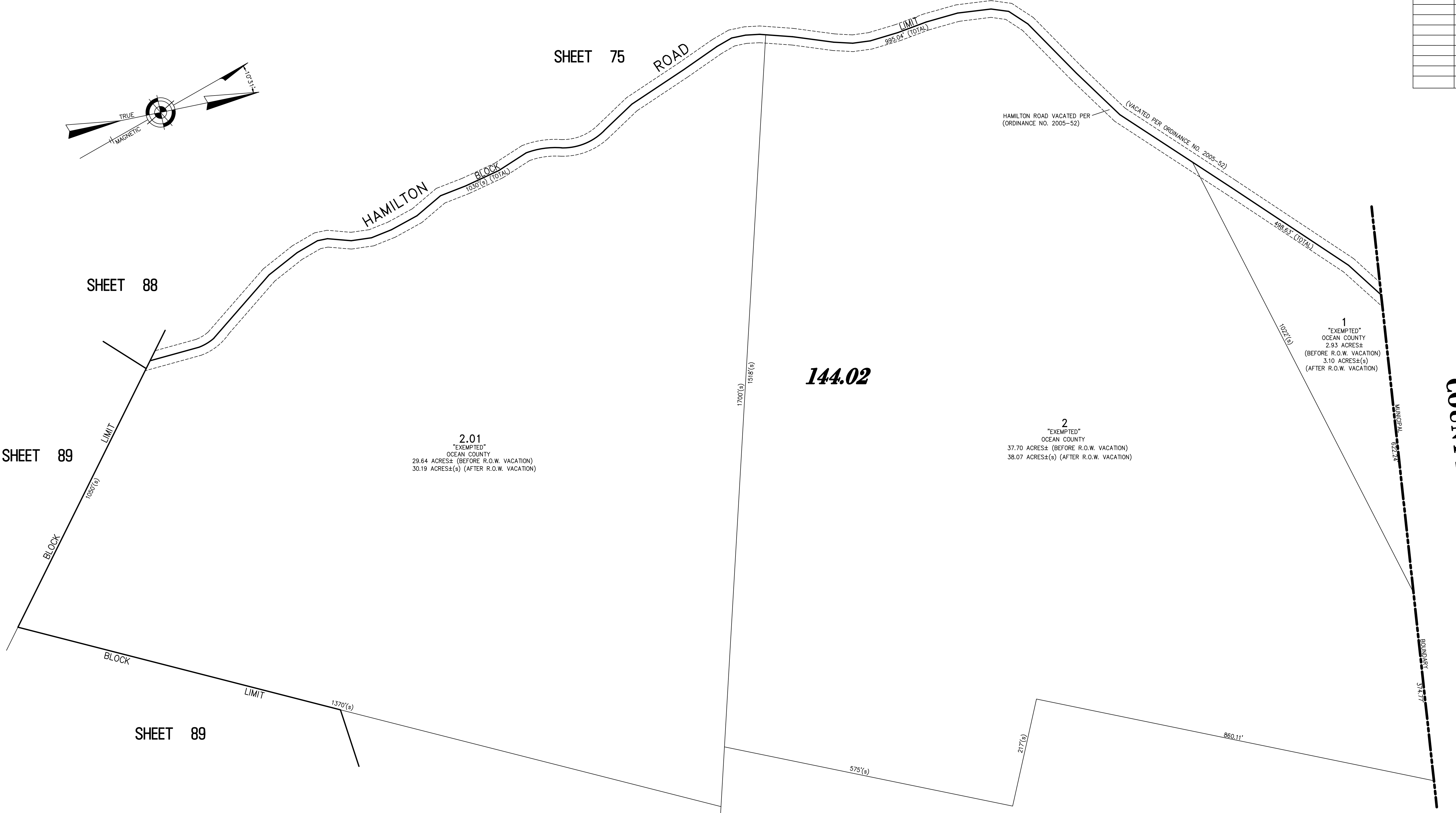
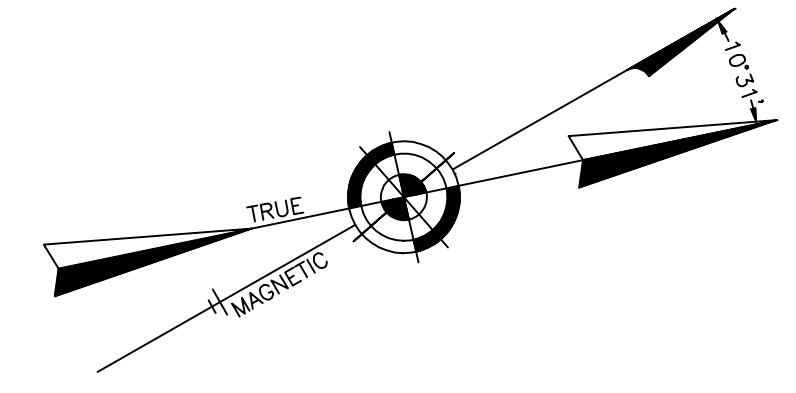


REVISIONS		
6-20-2007	CRAIG F. REMINGTON	23924



2.01
"EXEMPTED"
OCEAN COUNTY
29.64 ACRES± (BEFORE R.O.W. VACATION)
30.19 ACRES±(s) (AFTER R.O.W. VACATION)

2
"EXEMPTED"
OCEAN COUNTY
37.70 ACRES± (BEFORE R.O.W. VACATION)
38.07 ACRES±(s) (AFTER R.O.W. VACATION)

1
"EXEMPTED"
OCEAN COUNTY
2.93 ACRES±
(BEFORE R.O.W. VACATION)
3.10 ACRES±(s)
(AFTER R.O.W. VACATION)

144.02

"THIS TAX MAP PLATE HAS BEEN DIGITALLY DRAWN USING COMPUTER-AIDED DRAFTING/DESIGN (CADD), AND COORDINATE GEOMETRY (COG). IT IS BASED ON THE ORIGINAL DIGITALLY DRAWN TAX MAP PLATE BEARING THE OFFICIAL NEW JERSEY DIVISION OF TAXATION APPROVAL STAMP WITH APPROVAL DATE (7-31-2006) SERIAL NUMBER (896) AND SIGNATURES OF SIGNERS: JAMES J. COLL, CHIEF LOCAL ASSESSMENT, SANTO C. DIDONATO, SUPERVISING FIELD REPRESENTATIVE. THE ORIGINAL DIGITALLY DRAWN TAX MAP PLATE WITH THE OFFICIAL APPROVAL STAMP IS ON FILE WITH THE TOWNSHIP OF BARNEGAT ENGINEER."

TAX MAP
TOWNSHIP OF BARNEGAT

OCEAN COUNTY NEW JERSEY
SCALE: 1" = 100' DATE: 5-4-2004
CRAIG F. REMINGTON LAND SURVEYOR LIC. NO. 23924

REMINGTON, VERNICK & VENA ENGINEERS
9 ALLEN STREET, TOMS RIVER, N.J. 08753
(732) 286-9220, FAX (732) 505-9416
WEB SITE ADDRESS: WWW.RVE.COM

TO SHOW CONDITIONS AS OF 11-23-2021