

TAX MAP TOWNSHIP OF BARNEGAT

OCEAN COUNTY NEW JERSEY
SCALE: 1" = 100' DATE: 12-15-2004

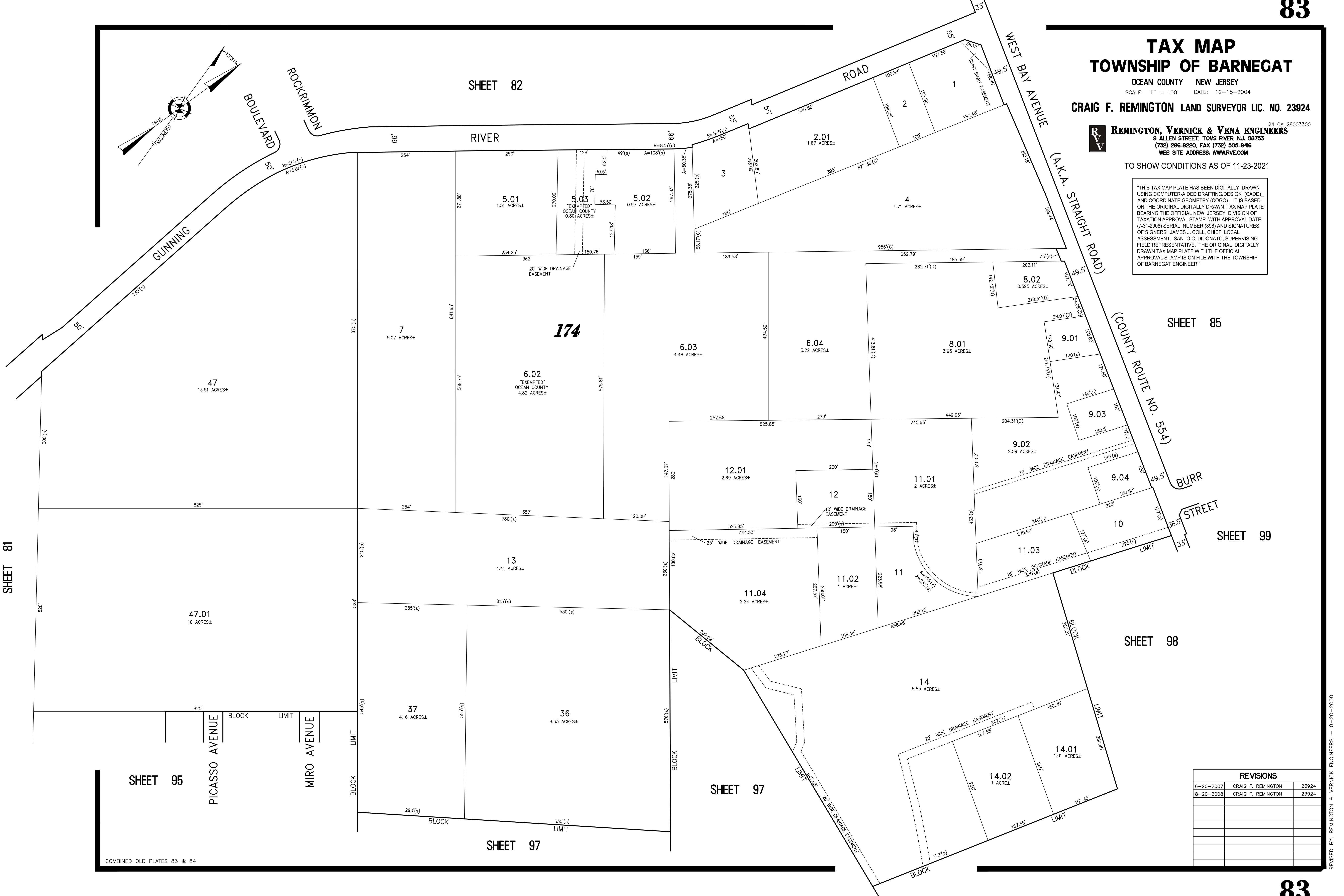
CRAIG F. REMINGTON LAND SURVEYOR LIC. NO. 23924



REMINGTON, VERNICK & VENA ENGINEERS
24 GA. 28003300
9 ALLEN STREET, TOMS RIVER, NJ, 08753
(732) 296-9220, FAX (732) 505-8416
WEB SITE ADDRESS: WWW.RVE.COM

TO SHOW CONDITIONS AS OF 11-23-2021

"THIS TAX MAP PLATE HAS BEEN DIGITALLY DRAWN USING COMPUTER-AIDED DRAFTING/DESIGN (CADD) AND COORDINATE GEOMETRY (COGO). IT IS BASED ON THE ORIGINAL DIGITALLY DRAWN TAX MAP PLATE BEARING THE OFFICIAL NEW JERSEY DIVISION OF TAXATION APPROVAL STAMP WITH APPROVAL DATE (7-31-2006) SERIAL NUMBER (896) AND SIGNATURES OF SIGNERS: JAMES J. COLL, CHIEF, LOCAL ASSESSMENT; SANTO C. DIDONATO, SUPERVISING FIELD REPRESENTATIVE. THE ORIGINAL DIGITALLY DRAWN TAX MAP PLATE WITH THE OFFICIAL APPROVAL STAMP IS ON FILE WITH THE TOWNSHIP OF BARNEGAT ENGINEER."



SHEET 81

SHEET 82

SHEET 85

SHEET 99

SHEET 98

SHEET 97

SHEET 97

SHEET 95

COMBINED OLD PLATES 83 & 84

REVISIONS		
6-20-2007	CRAIG F. REMINGTON	23924
8-20-2008	CRAIG F. REMINGTON	23924

REVISED BY: REMINGTON & VERNICK ENGINEERS - 8-20-2008