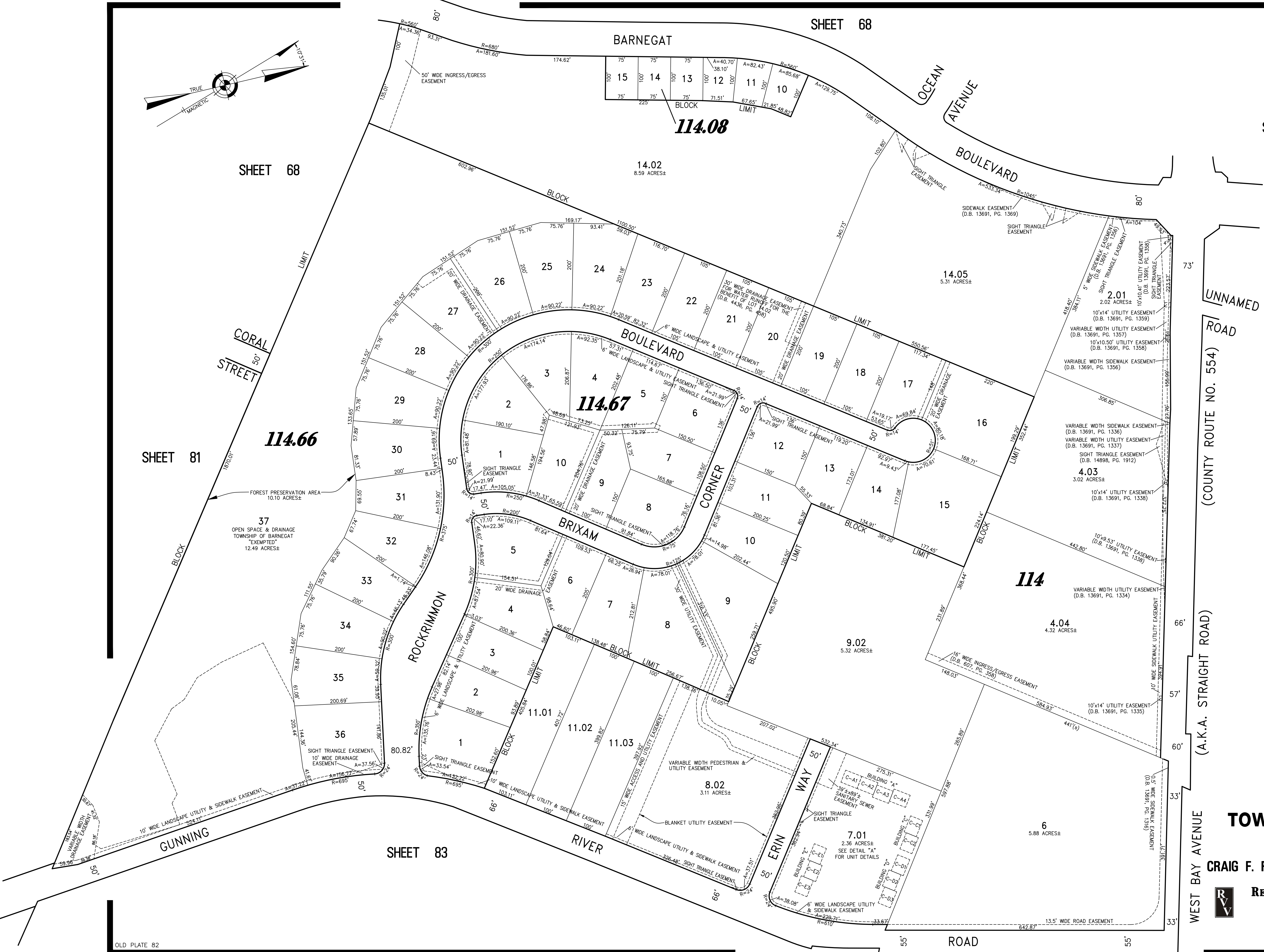
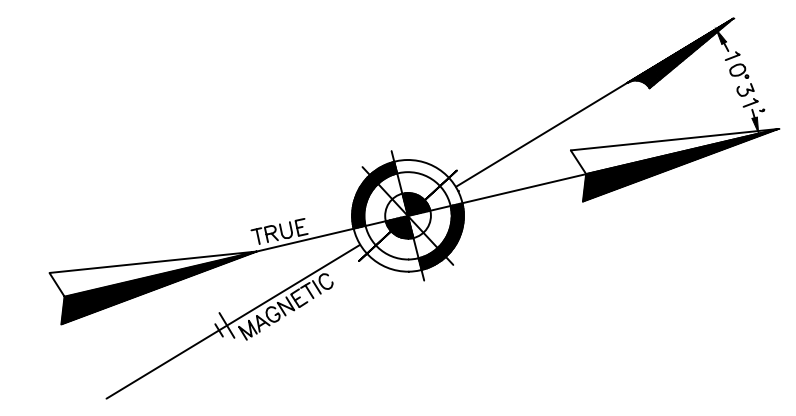


REVISIONS		
12-31-2008	CRAIG F. REMINGTON	23924
5-10-2010	CRAIG F. REMINGTON	23924
12-31-2011	CRAIG F. REMINGTON	23924
10-1-2014	CHARLES E. ADAMSON	42627
12-31-2015	CHARLES E. ADAMSON	42627



SHEET 69

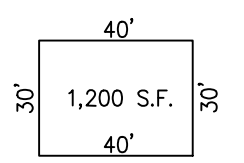
SHEET 68

SHEET 81

SHEET 85

SHEET 83

SHEET 83



NOTE: DIMENSIONS AND SQUARE FOOTAGE ARE TYPICAL FOR ALL UNITS

BUILDING "A"	BUILDING "C"	BUILDING "D"	BUILDING "E"
C-A1	C-C1	C-D1	C-E1
C-A2	C-C2	C-D2	C-E2
C-A3		C-D3	
C-A4			

DETAIL "A"
SCALE: 1" = 50'

"THIS TAX MAP PLATE HAS BEEN DIGITALLY DRAWN USING COMPUTER-AIDED DRAFTING/DESIGN (CADD) AND COORDINATE GEOMETRY (COGO). IT IS BASED ON THE ORIGINAL DIGITALLY DRAWN TAX MAP PLATE BEARING THE OFFICIAL NEW JERSEY DIVISION OF TAXATION APPROVAL STAMP WITH APPROVAL DATE (7-31-2006) SERIAL NUMBER (896) AND SIGNATURES OF SIGNERS' JAMES J. COLL, CHIEF, LOCAL ASSESSMENT, SANTO C. DIDONATO, SUPERVISING FIELD REPRESENTATIVE. THE ORIGINAL DIGITALLY DRAWN TAX MAP PLATE WITH THE OFFICIAL APPROVAL STAMP IS ON FILE WITH THE TOWNSHIP OF BARNEGAT ENGINEER."

TAX MAP TOWNSHIP OF BARNEGAT

OCEAN COUNTY NEW JERSEY
SCALE: 1" = 100' DATE: 12-12-2004

CRAIG F. REMINGTON LAND SURVEYOR LIC. NO. 23924



REMINGTON, VERNICK & VENA ENGINEERS
24 GA 28003300
9 ALLEN STREET, TOMS RIVER, NJ 08753
(732) 286-9220, FAX (732) 505-9416
WEB SITE ADDRESS: WWW.RVVE.COM

TO SHOW CONDITIONS AS OF 11-23-2021