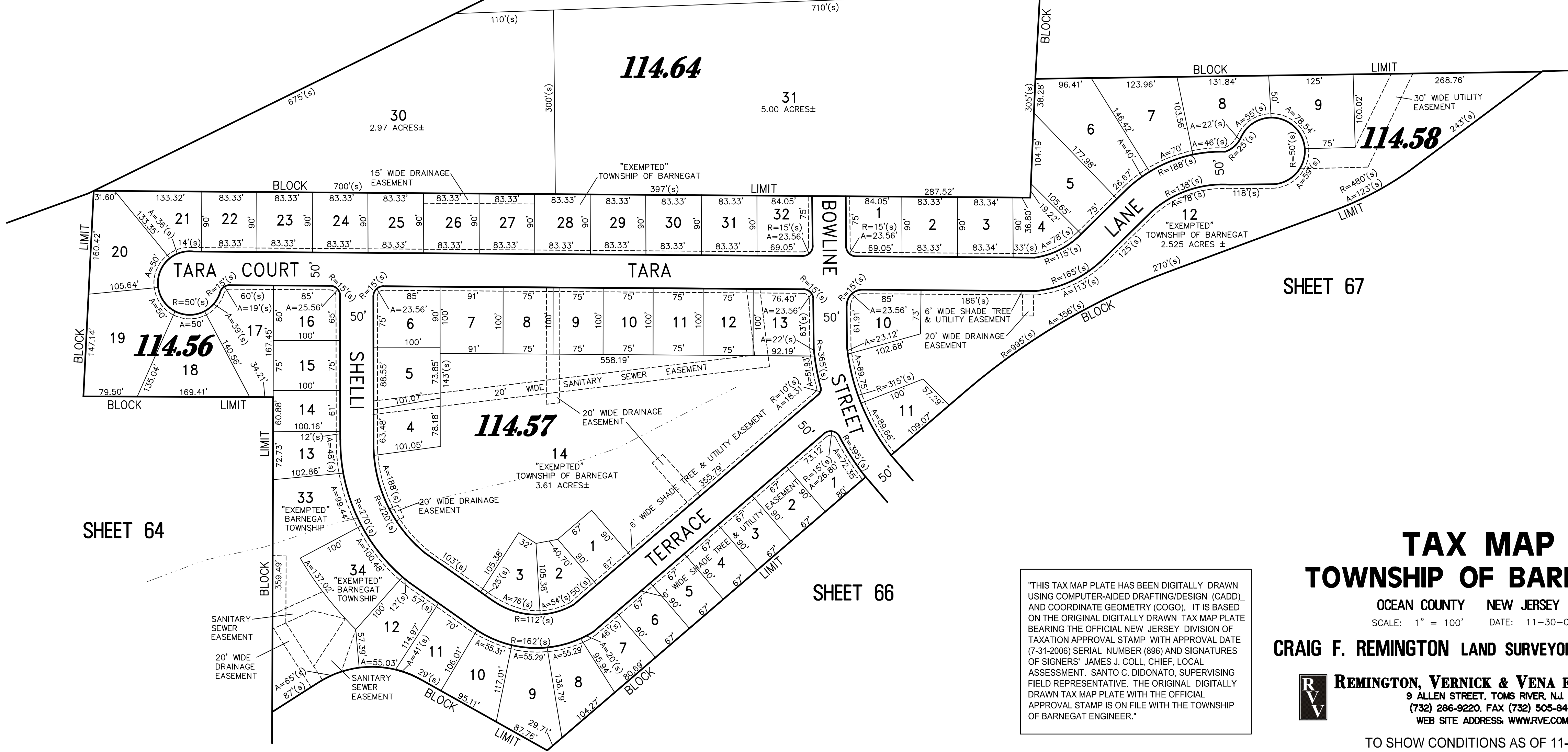
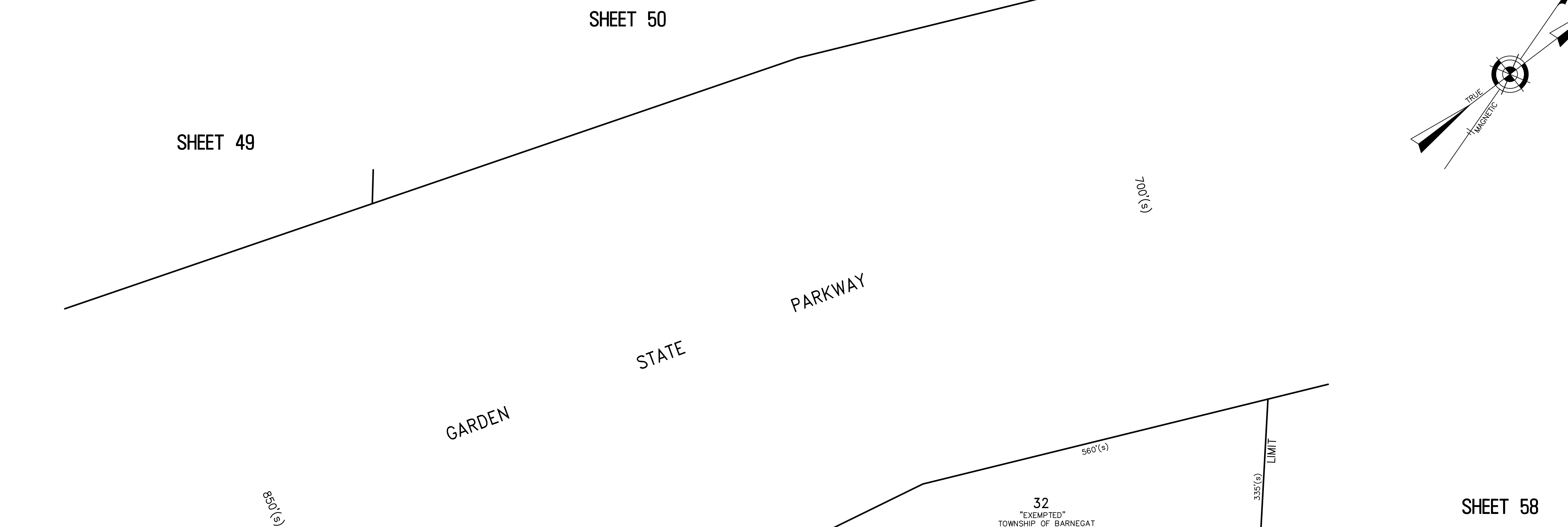
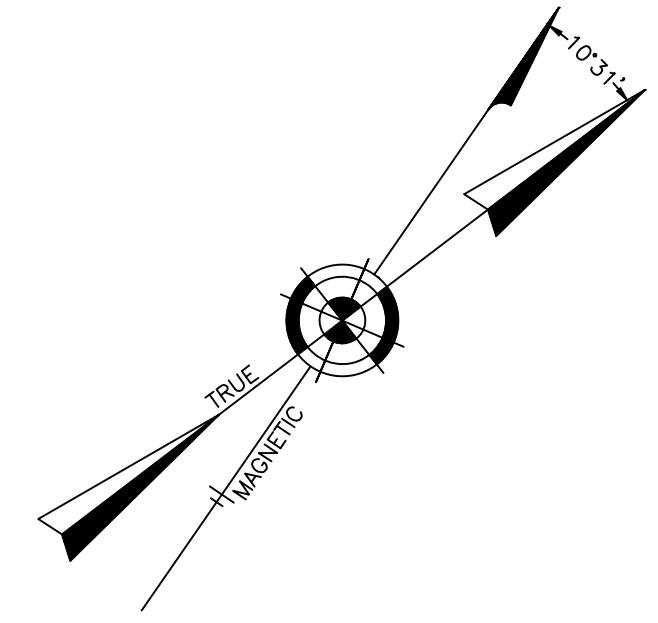


REVISIONS		
6-20-2007	CRAIG F. REMINGTON	23924



"THIS TAX MAP PLATE HAS BEEN DIGITALLY DRAWN USING COMPUTER-AIDED DRAFTING/DESIGN (CADD) AND COORDINATE GEOMETRY (COGO). IT IS BASED ON THE ORIGINAL DIGITALLY DRAWN TAX MAP PLATE BEARING THE OFFICIAL NEW JERSEY DIVISION OF TAXATION APPROVAL STAMP WITH APPROVAL DATE (7-31-2006) SERIAL NUMBER (896) AND SIGNATURES OF SIGNERS' JAMES J. COLL, CHIEF, LOCAL ASSESSMENT, SANTO C. DIDONATO, SUPERVISING FIELD REPRESENTATIVE. THE ORIGINAL DIGITALLY DRAWN TAX MAP PLATE WITH THE OFFICIAL APPROVAL STAMP IS ON FILE WITH THE TOWNSHIP OF BARNEGAT ENGINEER."

**TAX MAP**  
**TOWNSHIP OF BARNEGAT**  
 OCEAN COUNTY NEW JERSEY  
 SCALE: 1" = 100' DATE: 11-30-04  
**CRAIG F. REMINGTON LAND SURVEYOR LIC. NO. 23924**  
 REMINGTON, VERNICK & VENA ENGINEERS  
 9 ALLEN STREET, TOMS RIVER, N.J. 08753  
 (732) 296-9220, FAX (732) 505-8446  
 WEB SITE ADDRESS: WWW.RVE.COM  
 TO SHOW CONDITIONS AS OF 11-23-2021

REVISED BY: REMINGTON & VERNICK ENGINEERS - 6-20-2007  
 REVISED BY: REMINGTON & VERNICK ENGINEERS - 10-12-2006 - 1501P231

OLD PLATES 57 & 65