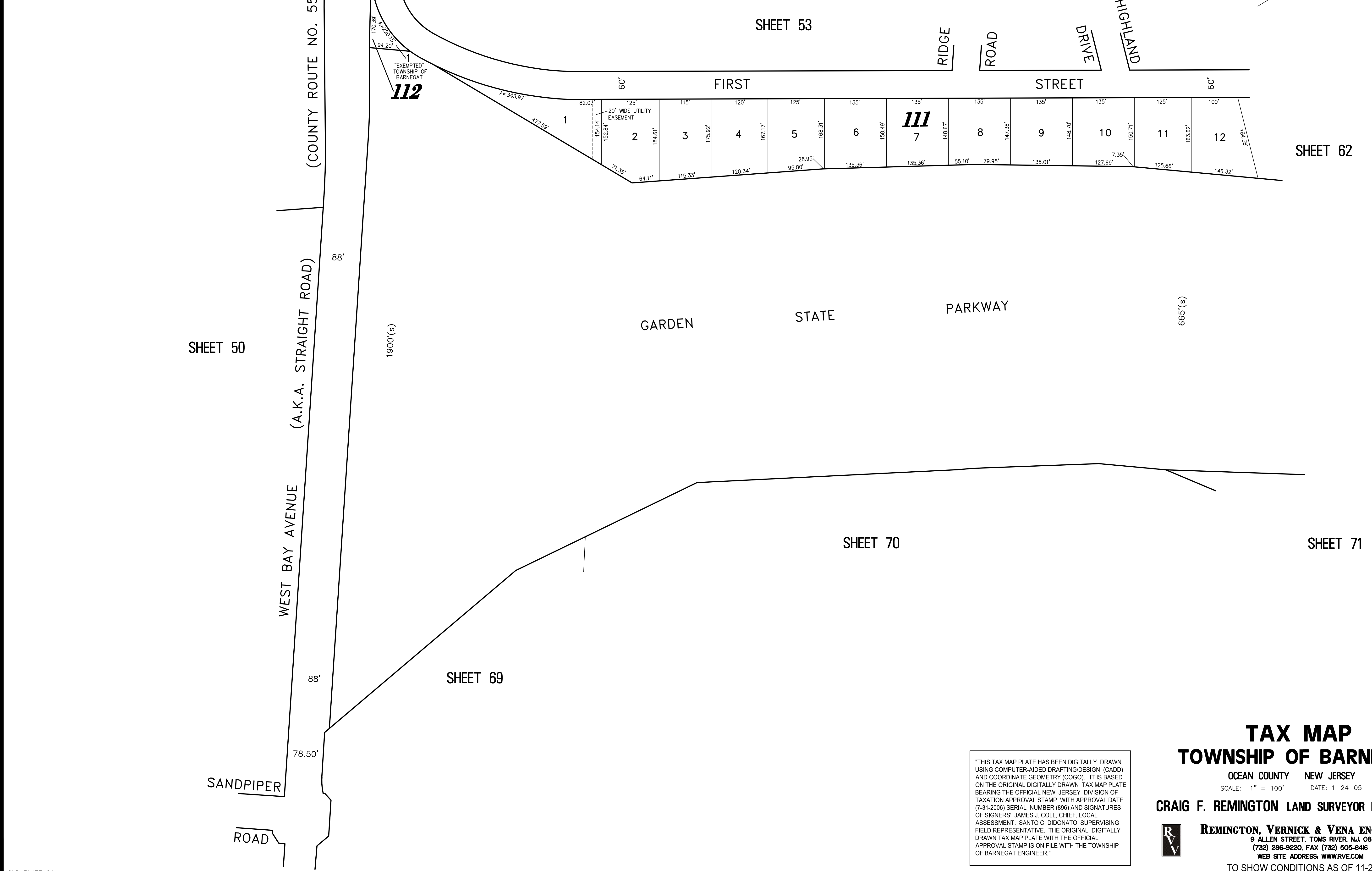



REVISIONS		
7-31-2006	CRAIG F. REMINGTON	23924
2-1-2010	CRAIG F. REMINGTON	23924
5-1-2010	CRAIG F. REMINGTON	23924
10-25-2019	CHARLES E. ADAMSON	42627



"THIS TAX MAP PLATE HAS BEEN DIGITALLY DRAWN USING COMPUTER-AIDED DRAFTING/DESIGN (CADD) AND COORDINATE GEOMETRY (COGO). IT IS BASED ON THE ORIGINAL DIGITALLY DRAWN TAX MAP PLATE BEARING THE OFFICIAL NEW JERSEY DIVISION OF TAXATION APPROVAL STAMP WITH APPROVAL DATE (7-31-2006) SERIAL NUMBER (896) AND SIGNATURES OF SIGNERS' JAMES J. COLL, CHIEF, LOCAL ASSESSMENT, SANTO C. DIDONATO, SUPERVISING FIELD REPRESENTATIVE. THE ORIGINAL DIGITALLY DRAWN TAX MAP PLATE WITH THE OFFICIAL APPROVAL STAMP IS ON FILE WITH THE TOWNSHIP OF BARNEGAT ENGINEER."

TAX MAP
TOWNSHIP OF BARNEGAT
 OCEAN COUNTY NEW JERSEY
 SCALE: 1" = 100' DATE: 1-24-05
CRAIG F. REMINGTON LAND SURVEYOR LIC. NO. 23924
 **REMINGTON, VERNICK & VENA ENGINEERS**
 9 ALLEN STREET, TOMS RIVER, N.J. 08753
 (732) 296-9220, FAX (732) 505-8446
 WEB SITE ADDRESS: WWW.RVVE.COM
 TO SHOW CONDITIONS AS OF 11-23-2021