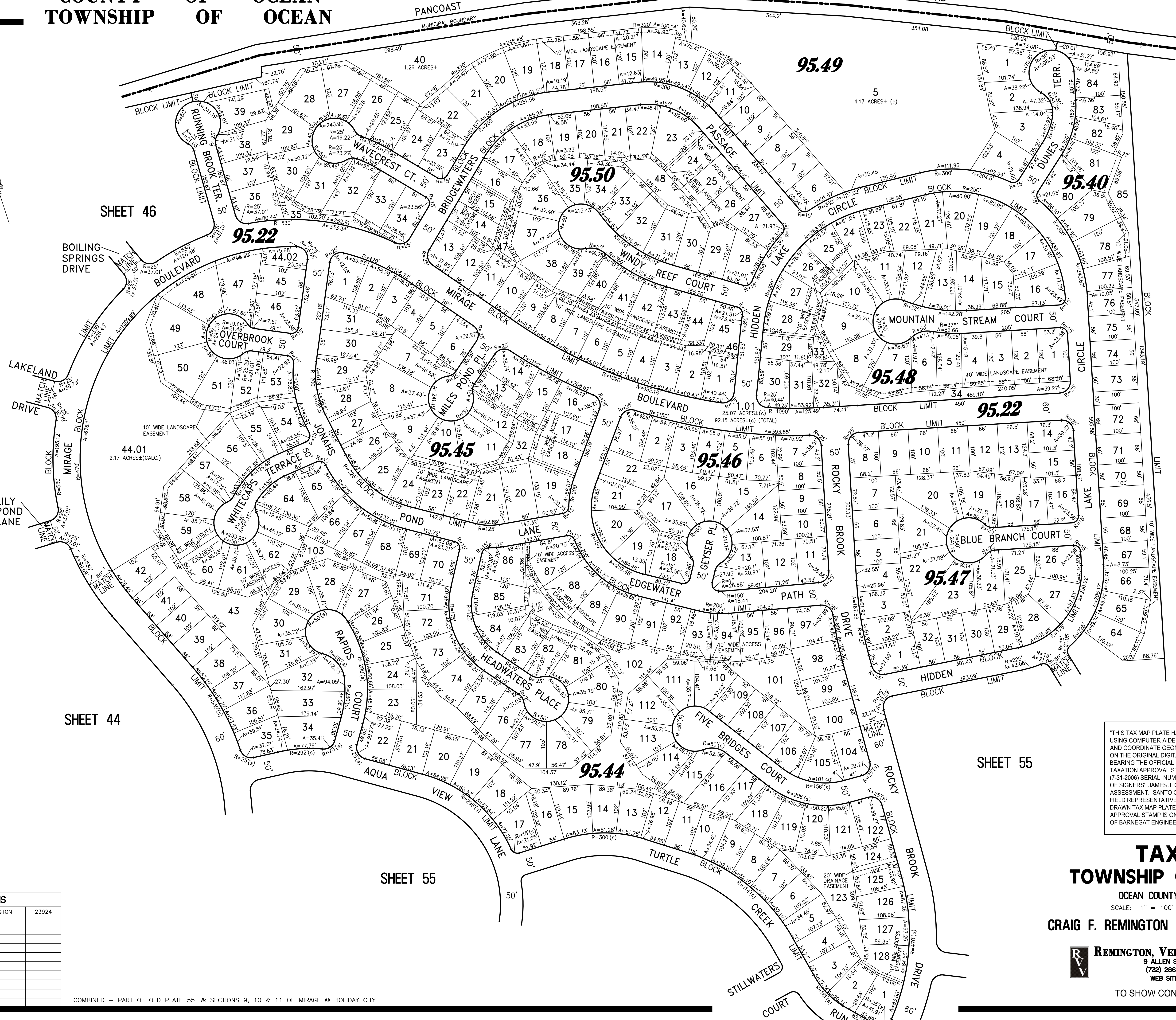
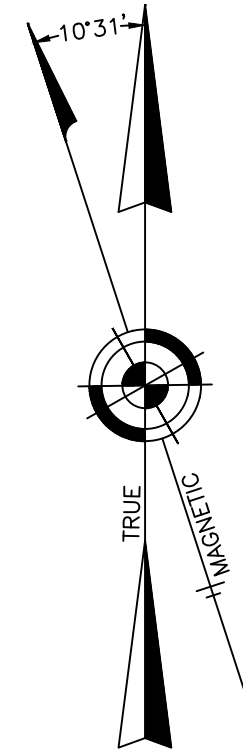


COUNTY OF OCEAN TOWNSHIP OF OCEAN

PANCOAST ROAD

ROAD



SHEET 46

SHEET 63

SHEET 44

SHEET 55

SHEET 55

REVISIONS		
6-20-2007	CRAIG F. REMINGTON	23924

COMBINED - PART OF OLD PLATE 55, & SECTIONS 9, 10 & 11 OF MIRAGE @ HOLIDAY CITY

"THIS TAX MAP PLATE HAS BEEN DIGITALLY DRAWN USING COMPUTER-AIDED DRAFTING/DESIGN (CADD), AND COORDINATE GEOMETRY (COGO). IT IS BASED ON THE ORIGINAL DIGITALLY DRAWN TAX MAP PLATE BEARING THE OFFICIAL NEW JERSEY DIVISION OF TAXATION APPROVAL STAMP WITH APPROVAL DATE (7-31-2008) SERIAL NUMBER (866) AND SIGNATURES OF SIGNERS' JAMES J. COLL, CHIEF, LOCAL ASSESSMENT, SANTO C. DIDONATO, SUPERVISING FIELD REPRESENTATIVE. THE ORIGINAL DIGITALLY DRAWN TAX MAP PLATE WITH THE OFFICIAL APPROVAL STAMP IS ON FILE WITH THE TOWNSHIP OF BARNEGAT ENGINEER."

TAX MAP
TOWNSHIP OF BARNEGAT
OCEAN COUNTY NEW JERSEY
SCALE: 1" = 100' DATE: 1-10-2004

CRAIG F. REMINGTON LAND SURVEYOR LIC. NO. 23924

REVISIONS

REMINGTON, VERNICK & VENA ENGINEERS
24 GA 28003300
9 ALLEN STREET, TOMS RIVER, NJ 08753
(732) 286-9220, FAX (732) 505-8416
WEB SITE ADDRESS: WWW.RVVE.COM

TO SHOW CONDITIONS AS OF 11-23-2021