

TAX MAP TOWNSHIP OF BARNEGAT

OCEAN COUNTY NEW JERSEY
SCALE: 1" = 100' DATE: 10-14-04

CRAIG F. REMINGTON LAND SURVEYOR LIC. NO. 23924

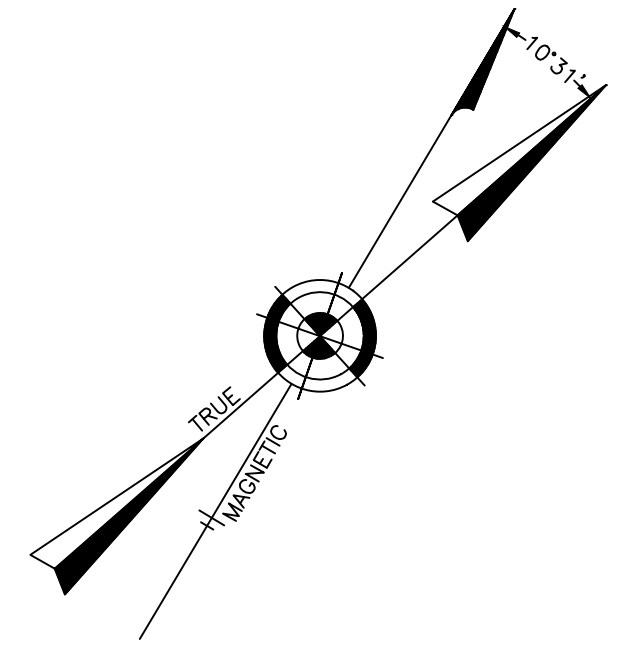


REMINGTON, VERNICK & VENA ENGINEERS
9 ALLEN STREET, TOMS RIVER, N.J. 08753
(732) 286-9220, FAX (732) 505-8416
WEB SITE ADDRESS: WWW.RVVE.COM

TO SHOW CONDITIONS AS OF 11-23-2021

"THIS TAX MAP PLATE HAS BEEN DIGITALLY DRAWN USING COMPUTER-AIDED DRAFTING/DESIGN (CADD) AND COORDINATE GEOMETRY (COGO). IT IS BASED ON THE ORIGINAL DIGITALLY DRAWN TAX MAP PLATE BEARING THE OFFICIAL NEW JERSEY DIVISION OF TAXATION APPROVAL STAMP WITH APPROVAL DATE (7-31-2006) SERIAL NUMBER (896) AND SIGNATURES OF SIGNERS' JAMES J. COLL, CHIEF, LOCAL ASSESSMENT, SANTO C. DIDONATO, SUPERVISING FIELD REPRESENTATIVE. THE ORIGINAL DIGITALLY DRAWN TAX MAP PLATE WITH THE OFFICIAL APPROVAL STAMP IS ON FILE WITH THE TOWNSHIP OF BARNEGAT ENGINEER."

REVISIONS		
12-31-2008	CRAIG F. REMINGTON	23924
2-1-2010	CRAIG F. REMINGTON	23924
5-1-2010	CRAIG F. REMINGTON	23924
10-15-2010	CRAIG F. REMINGTON	23924
12-10-2012	CRAIG F. REMINGTON	23924
12-31-2015	CHARLES E. ADAMSON	42627
12-5-2016	CHARLES E. ADAMSON	42627
5-30-2017	CHARLES E. ADAMSON	42627
12-28-2018	CHARLES E. ADAMSON	42627
12-8-2020	CHARLES E. ADAMSON	42627
11-16-2021	CHARLES E. ADAMSON	42627



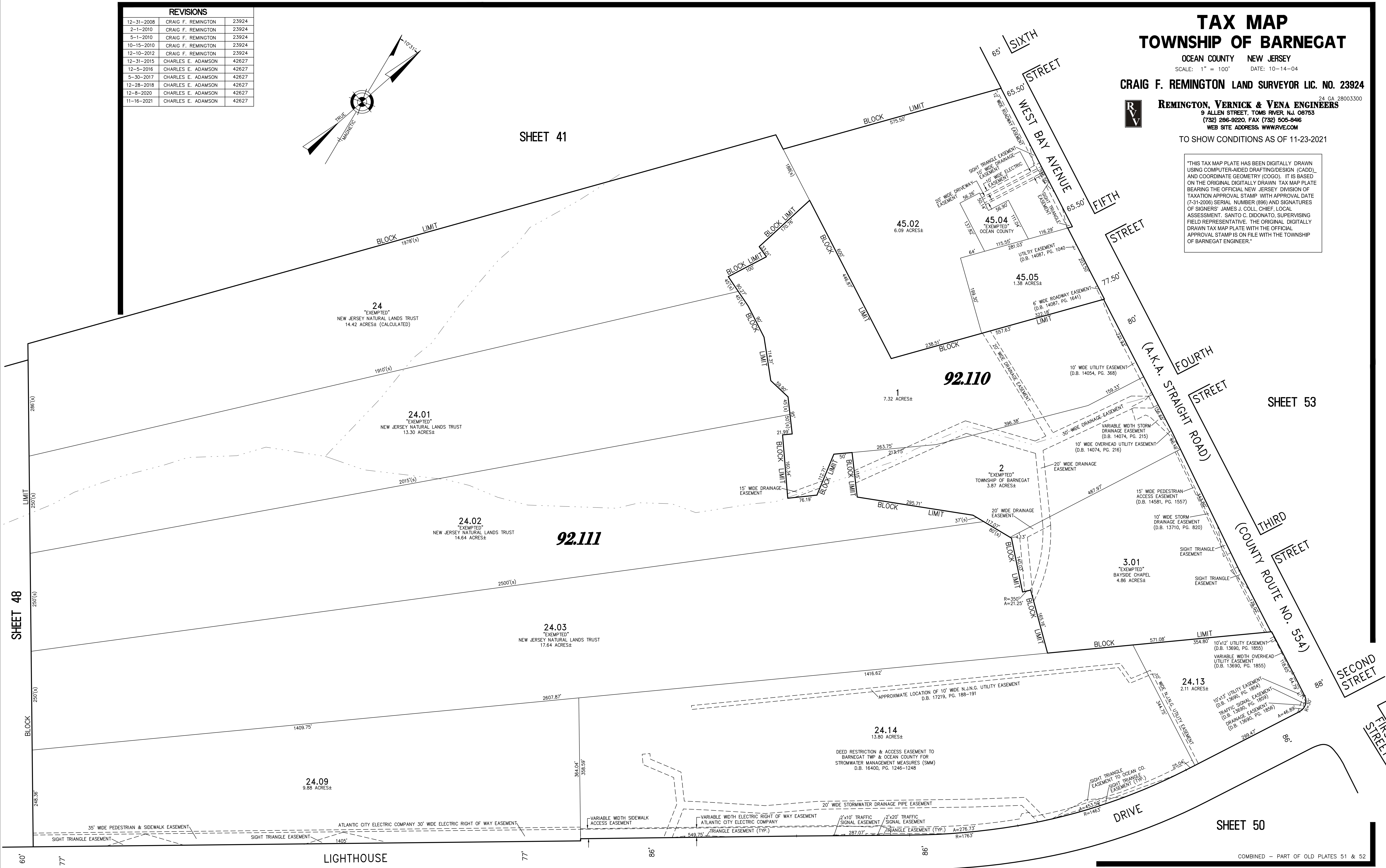
SHEET 41

SHEET 48

SHEET 53

SHEET 50

SHEET 52



COMBINED - PART OF OLD PLATES 51 & 52