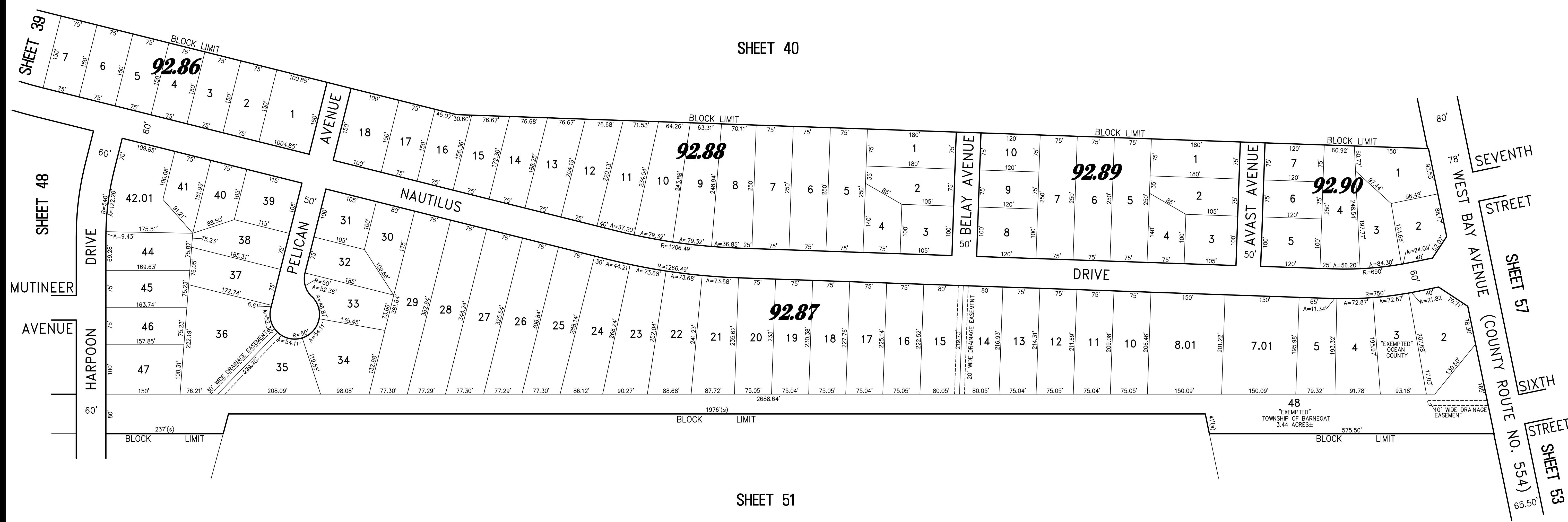
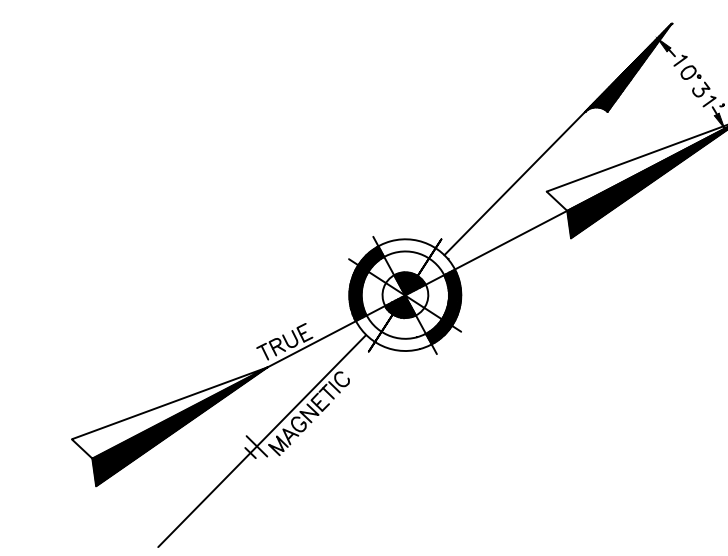


REVISIONS			
12-31-2008	CRAIG F. REMINGTON	23924	
5-1-2010	CRAIG F. REMINGTON	23924	
10-15-2010	CRAIG F. REMINGTON	23924	
12-10-2012	CRAIG F. REMINGTON	23924	
12-5-2016	CHARLES E. ADAMSON	42627	



COMBINED - PART OF OLD PLATES 41 & 42

"THIS TAX MAP PLATE HAS BEEN DIGITALLY DRAWN USING COMPUTER-AIDED DRAFTING/DESIGN (CADD) AND COORDINATE GEOMETRY (COGO). IT IS BASED ON THE ORIGINAL DIGITALLY DRAWN TAX MAP PLATE BEARING THE OFFICIAL NEW JERSEY DIVISION OF TAXATION APPROVAL STAMP WITH APPROVAL DATE (7-31-2006) SERIAL NUMBER (896) AND SIGNATURES OF SIGNERS' JAMES J. COLL, CHIEF, LOCAL ASSESSMENT, SANTO C. DIDONATO, SUPERVISING FIELD REPRESENTATIVE. THE ORIGINAL DIGITALLY DRAWN TAX MAP PLATE WITH THE OFFICIAL APPROVAL STAMP IS ON FILE WITH THE TOWNSHIP OF BARNEGAT ENGINEER."

### TAX MAP TOWNSHIP OF BARNEGAT

OCEAN COUNTY NEW JERSEY  
 SCALE: 1" = 100' DATE: 10-15-2004  
**CRAIG F. REMINGTON LAND SURVEYOR LIC. NO. 23924**  
 REMINGTON, VERNICK & VENA ENGINEERS  
 9 ALLEN STREET, TOMS RIVER, N.J. 08753  
 (732) 296-9220, FAX (732) 505-8416  
 WEB SITE ADDRESS: WWW.RVVE.COM  
 TO SHOW CONDITIONS AS OF 11-23-2021