

# TAX MAP TOWNSHIP OF BARNEGAT

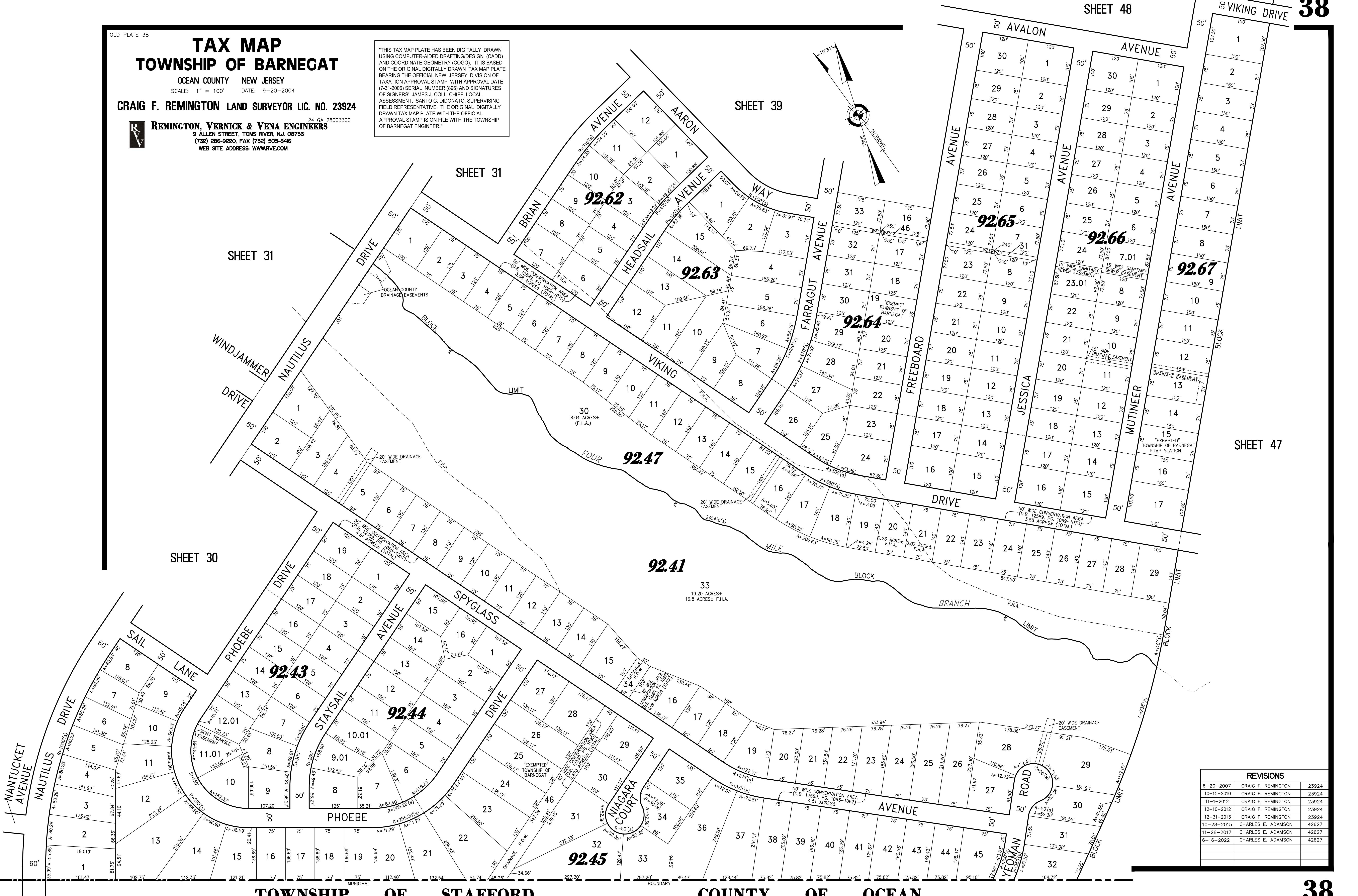
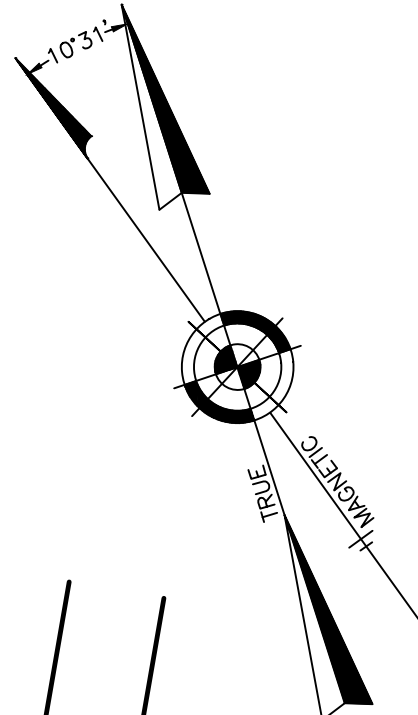
OCEAN COUNTY NEW JERSEY  
SCALE: 1" = 100' DATE: 9-20-2004

CRAIG F. REMINGTON LAND SURVEYOR LIC. NO. 23924



REMINGTON, VERNICK & VENA ENGINEERS  
24 GA. 28003300  
9 ALLEN STREET, TOMS RIVER, N.J. 08753  
(732) 286-9220, FAX (732) 505-8416  
WEB SITE ADDRESS: WWW.RVVE.COM

"THIS TAX MAP PLATE HAS BEEN DIGITALLY DRAWN USING COMPUTER-AIDED DRAFTING/DESIGN (CADD) AND COORDINATE GEOMETRY (COGO). IT IS BASED ON THE ORIGINAL DIGITALLY DRAWN TAX MAP PLATE BEARING THE OFFICIAL NEW JERSEY DIVISION OF TAXATION APPROVAL STAMP WITH APPROVAL DATE (7-31-2006) SERIAL NUMBER (896) AND SIGNATURES OF SIGNERS: JAMES J. COLL, CHIEF LOCAL ASSESSMENT, SANTO C. DIDONATO, SUPERVISING FIELD REPRESENTATIVE. THE ORIGINAL DIGITALLY DRAWN TAX MAP PLATE WITH THE OFFICIAL APPROVAL STAMP IS ON FILE WITH THE TOWNSHIP OF BARNEGAT ENGINEER."



REVISIONS		
6-20-2007	CRAIG F. REMINGTON	23924
10-15-2010	CRAIG F. REMINGTON	23924
11-1-2012	CRAIG F. REMINGTON	23924
12-10-2012	CRAIG F. REMINGTON	23924
12-31-2013	CRAIG F. REMINGTON	23924
10-28-2015	CHARLES E. ADAMSON	42627
11-28-2017	CHARLES E. ADAMSON	42627
6-16-2022	CHARLES E. ADAMSON	42627