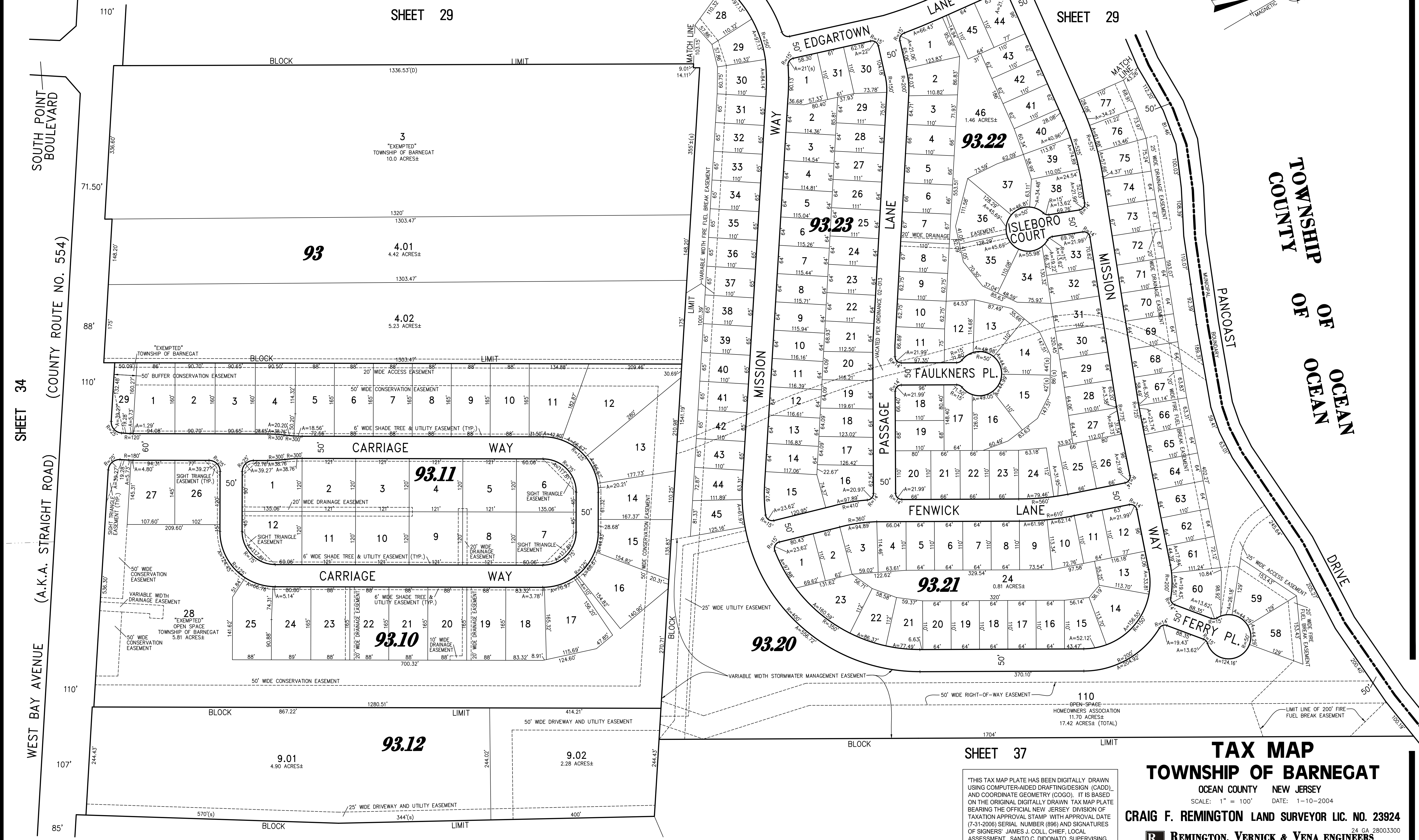


REVISIONS		
12-31-2008	CRAIG F. REMINGTON	23924
12-31-2015	CHARLES E. ADAMSON	42627



REVISIONS		
12-31-2008	CRAIG F. REMINGTON	23924
12-31-2015	CHARLES E. ADAMSON	42627

COMBINED HERITAGE POINT NORTH AND OLD PLATE 35

"THIS TAX MAP PLATE HAS BEEN DIGITALLY DRAWN USING COMPUTER-AIDED DRAFTING/DESIGN (CADD) AND COORDINATE GEOMETRY (COGO). IT IS BASED ON THE ORIGINAL DIGITALLY DRAWN TAX MAP PLATE BEARING THE OFFICIAL NEW JERSEY DIVISION OF TAXATION APPROVAL STAMP WITH APPROVAL DATE (7-31-2006) SERIAL NUMBER (896) AND SIGNATURES OF SIGNERS' JAMES J. COLL, CHIEF, LOCAL ASSESSMENT, SANTO C. DIDONATO, SUPERVISING FIELD REPRESENTATIVE. THE ORIGINAL DIGITALLY DRAWN TAX MAP PLATE WITH THE OFFICIAL APPROVAL STAMP IS ON FILE WITH THE TOWNSHIP OF BARNEGAT ENGINEER."

TAX MAP
TOWNSHIP OF BARNEGAT
 OCEAN COUNTY NEW JERSEY
 SCALE: 1" = 100' DATE: 1-10-2004
CRAIG F. REMINGTON LAND SURVEYOR LIC. NO. 23924
 REMINGTON, VERNICK & VENA ENGINEERS
 9 ALLEN STREET, TOMS RIVER, N.J. 08753
 (732) 286-9220, FAX (732) 505-8416
 WEB SITE ADDRESS: WWW.RVVE.COM
 24 GA 28003300
 TO SHOW CONDITIONS AS OF 11-23-2021