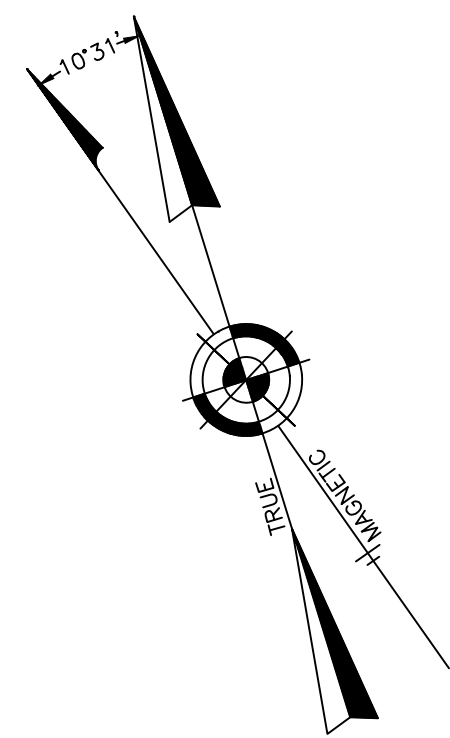
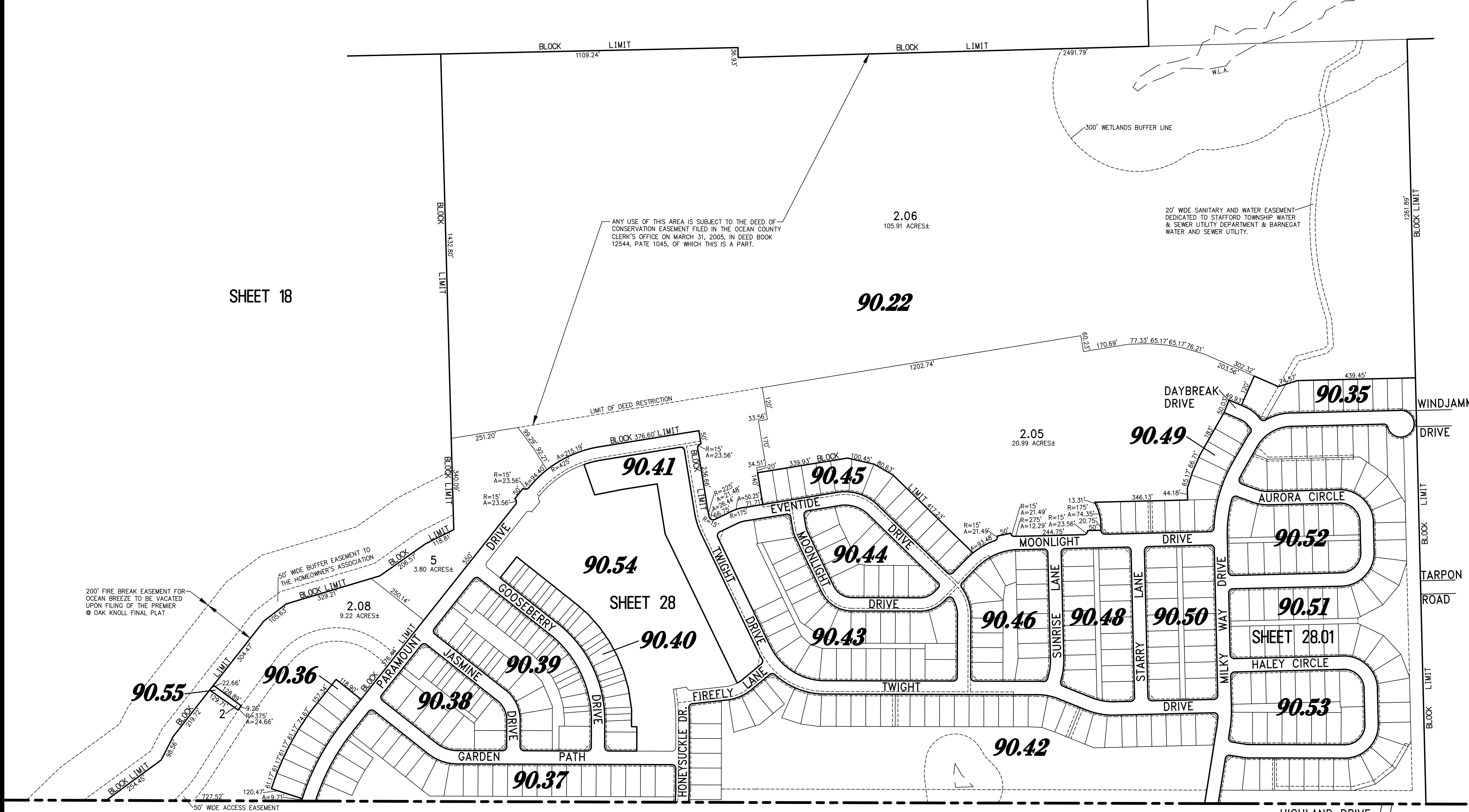


REVISIONS		
5-25-2008	CRAIG F. REMINGTON	23924
3-12-2013	CRAIG F. REMINGTON	23924
2-20-2014	CHARLES E. ADAMSON	42627
6-23-2015	CHARLES E. ADAMSON	42627
5-30-2017	CHARLES E. ADAMSON	42627
5-16-2018	CHARLES E. ADAMSON	42627
8-14-2018	CHARLES E. ADAMSON	42627
9-16-2020	CHARLES E. ADAMSON	42627
11-16-2021	CHARLES E. ADAMSON	42627



**TOWNSHIP OF STAFFORD
COUNTY OF OCEAN**

**TAX MAP
TOWNSHIP OF BARNEGAT**

OCEAN COUNTY NEW JERSEY
SCALE: 1" = 200' DATE: 1-10-2004

CRAIG F. REMINGTON LAND SURVEYOR LIC. NO. 23924



REMINGTON, VERNICK & VENA ENGINEERS
24 GA 28003300
9 ALLEN STREET, TOMS RIVER, N.J. 08753
(732) 286-9220, FAX (732) 505-8416
WEB SITE ADDRESS: WWW.RVVE.COM

"THIS TAX MAP PLATE HAS BEEN DIGITALLY DRAWN USING COMPUTER-AIDED DRAFTING/DESIGN (CADD) AND COORDINATE GEOMETRY (COGO). IT IS BASED ON THE ORIGINAL DIGITALLY DRAWN TAX MAP PLATE BEARING THE OFFICIAL NEW JERSEY DIVISION OF TAXATION APPROVAL STAMP WITH APPROVAL DATE (7-31-2006) SERIAL NUMBER (898) AND SIGNATURES OF SIGNERS' JAMES J. COLL, CHIEF LOCAL ASSESSMENT, SANTO C. DIDONATO, SUPERVISING FIELD REPRESENTATIVE. THE ORIGINAL DIGITALLY DRAWN TAX MAP PLATE WITH THE OFFICIAL APPROVAL STAMP IS ON FILE WITH THE TOWNSHIP OF BARNEGAT ENGINEER."

PARAMOUNT ESCAPES OCEAN BREEZE
COMBINED PLATES - OLD PLATES 17, 18, 19

TO SHOW CONDITIONS AS OF 11-23-2021