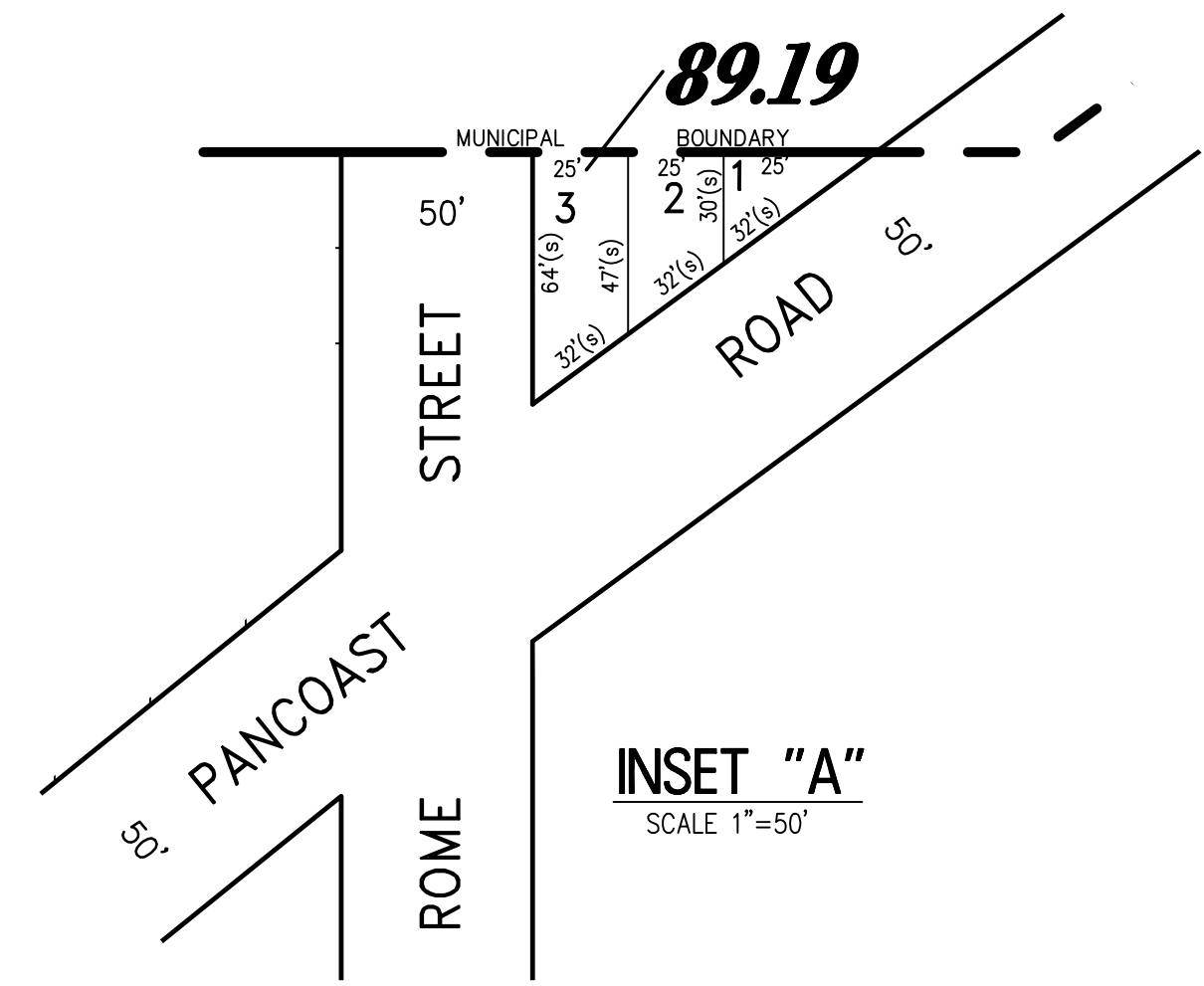
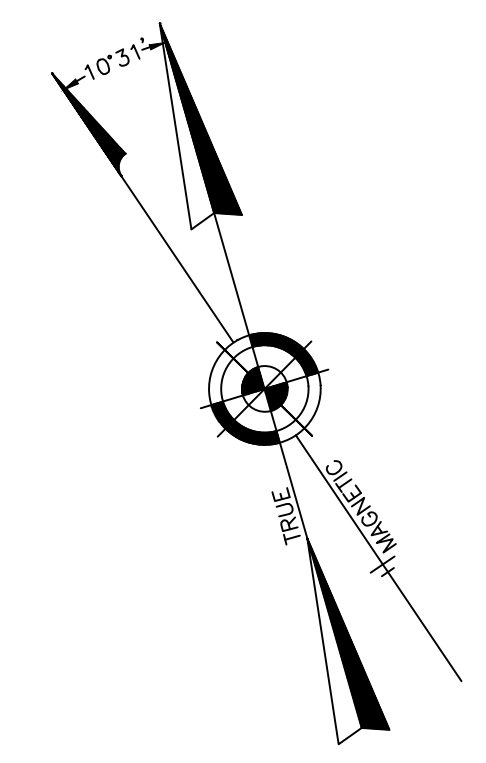
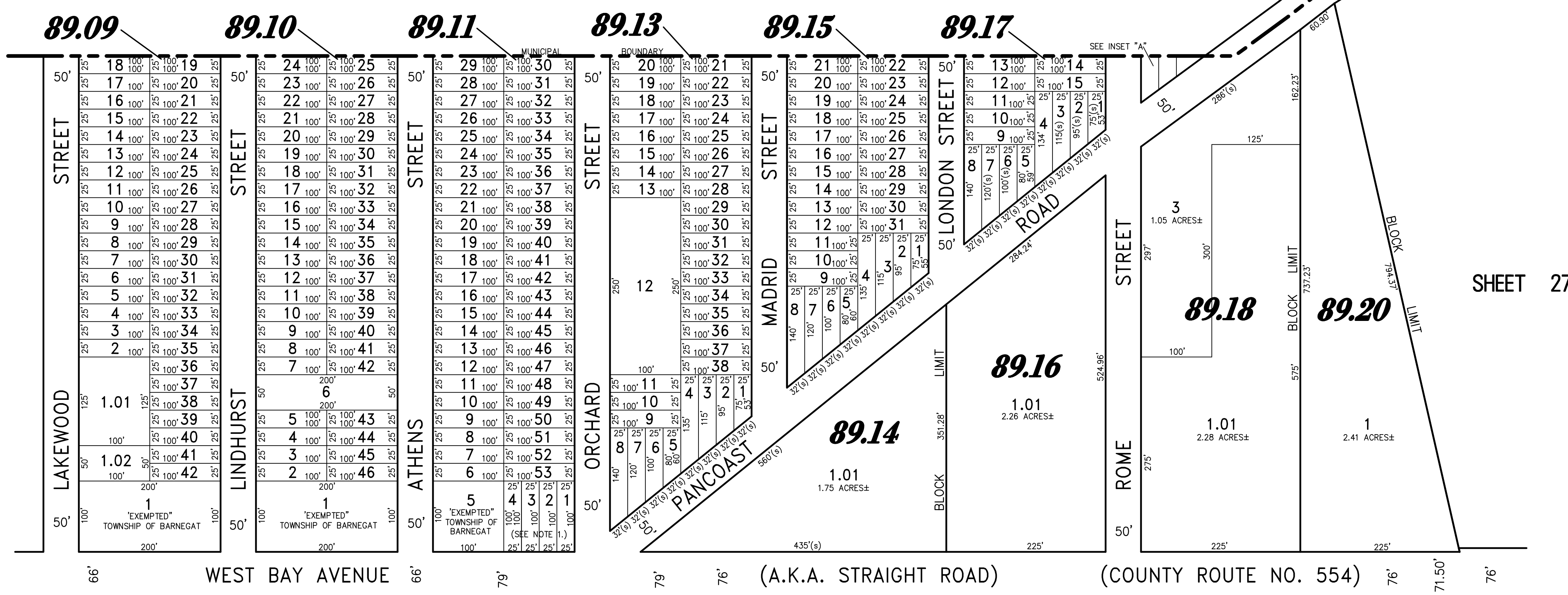


REVISIONS			
5-25-2008	CRAIG F. REMINGTON	23924	
3-12-2013	CRAIG F. REMINGTON	23924	
9-12-2016	CHARLES E. ADAMSON	42627	
11-28-2017	CHARLES E. ADAMSON	42627	



TOWNSHIP OF OCEAN
COUNTY OF OCEAN



SHEET 16

SHEET 27

SHEET 21

NOTE 1:
ROAD EASEMENT TO OCEAN COUNTY
EXTENDING FROM WESTERLY LINE OF
BLOCK 89.11, LOT 4 TO ORCHARD STREET
40' PARALLEL FROM CENTERLINE OF
WEST BAY AVENUE
(D.B. 16669, PG. 1579)

PART OF OLD PLATE 16

"THIS TAX MAP PLATE HAS BEEN DIGITALLY DRAWN USING COMPUTER-AIDED DRAFTING/DESIGN (CADD) AND COORDINATE GEOMETRY (COGO). IT IS BASED ON THE ORIGINAL DIGITALLY DRAWN TAX MAP PLATE BEARING THE OFFICIAL NEW JERSEY DIVISION OF TAXATION APPROVAL STAMP WITH APPROVAL DATE (7-31-2006) SERIAL NUMBER (896) AND SIGNATURES OF SIGNERS: JAMES J. COLL, CHIEF, LOCAL ASSESSMENT. SANTO C. DIDONATO, SUPERVISING FIELD REPRESENTATIVE. THE ORIGINAL DIGITALLY DRAWN TAX MAP PLATE WITH THE OFFICIAL APPROVAL STAMP IS ON FILE WITH THE TOWNSHIP OF BARNEGAT ENGINEER."

TAX MAP
TOWNSHIP OF BARNEGAT

OCEAN COUNTY NEW JERSEY
SCALE: 1" = 100' DATE: 4-22-2005

CRAIG F. REMINGTON LAND SURVEYOR LIC. NO. 23924

REMINGTON, VERNICK & VENA ENGINEERS
24 GA 28003300
9 ALLEN STREET, TOMS RIVER, NJ 08753
(732) 296-9220, FAX (732) 505-846
WEB SITE ADDRESS: WWW.RVVE.COM

TO SHOW CONDITIONS AS OF 11-23-2021