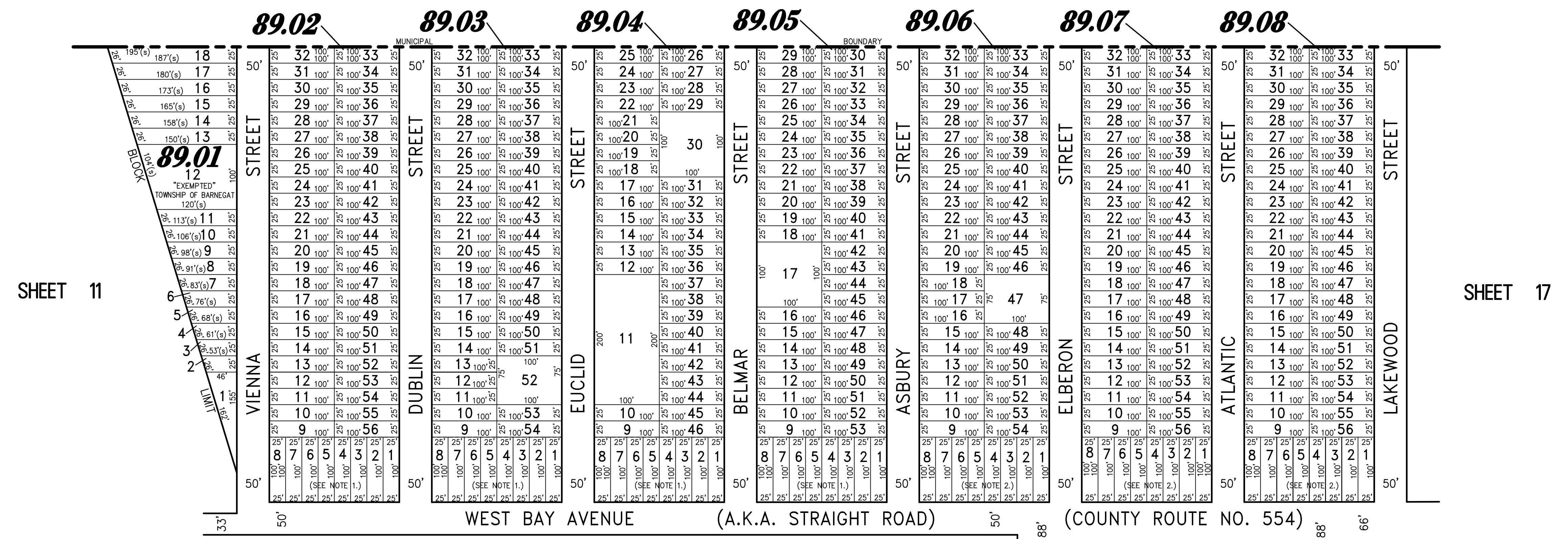


REVISIONS		
5-25-2008	CRAIG F. REMINGTON	23924
3-12-2013	CRAIG F. REMINGTON	23924
12-31-2013	CRAIG F. REMINGTON	23924
11-28-2017	CHARLES E. ADAMSON	42627

TOWNSHIP OF OCEAN  
COUNTY OF OCEAN



NOTE 1:  
ROAD EASEMENT TO OCEAN COUNTY  
EXTENDING FROM VIENNA STREET TO  
ASBURY STREET, 125' PARALLEL TO  
CENTERLINE OF WEST BAY AVENUE  
(D.B. 16669, PG. 1579)

NOTE 2:  
ROAD EASEMENT TO OCEAN COUNTY  
EXTENDING FROM ASBURY STREET TO  
LAKEWOOD STREET, 40' PARALLEL TO  
CENTERLINE OF WEST BAY AVENUE  
(D.B. 16669, PG. 1579)

**TAX MAP**  
**TOWNSHIP OF BARNEGAT**  
OCEAN COUNTY NEW JERSEY  
SCALE: 1" = 100' DATE: 4-22-2005  
**CRAIG F. REMINGTON LAND SURVEYOR LIC. NO. 23924**

**REMINGTON, VERNICK & VENA ENGINEERS**  
24 GA 28003300  
9 ALLEN STREET, TOMS RIVER, NJ 08753  
(732) 266-9220, FAX (732) 505-6446  
WEB SITE ADDRESS: WWW.RVE.COM

"THIS TAX MAP PLATE HAS BEEN DIGITALLY DRAWN USING COMPUTER-AIDED DRAFTING/DESIGN (CADD) AND COORDINATE GEOMETRY (COGO). IT IS BASED ON THE ORIGINAL DIGITALLY DRAWN TAX MAP PLATE BEARING THE OFFICIAL NEW JERSEY DIVISION OF TAXATION APPROVAL STAMP WITH APPROVAL DATE (7-31-2006) SERIAL NUMBER (896) AND SIGNATURES OF SIGNERS' JAMES J. COLL, CHIEF, LOCAL ASSESSMENT, SANTO C. DIDONATO, SUPERVISING FIELD REPRESENTATIVE. THE ORIGINAL DIGITALLY DRAWN TAX MAP PLATE WITH THE OFFICIAL APPROVAL STAMP IS ON FILE WITH THE TOWNSHIP OF BARNEGAT ENGINEER."