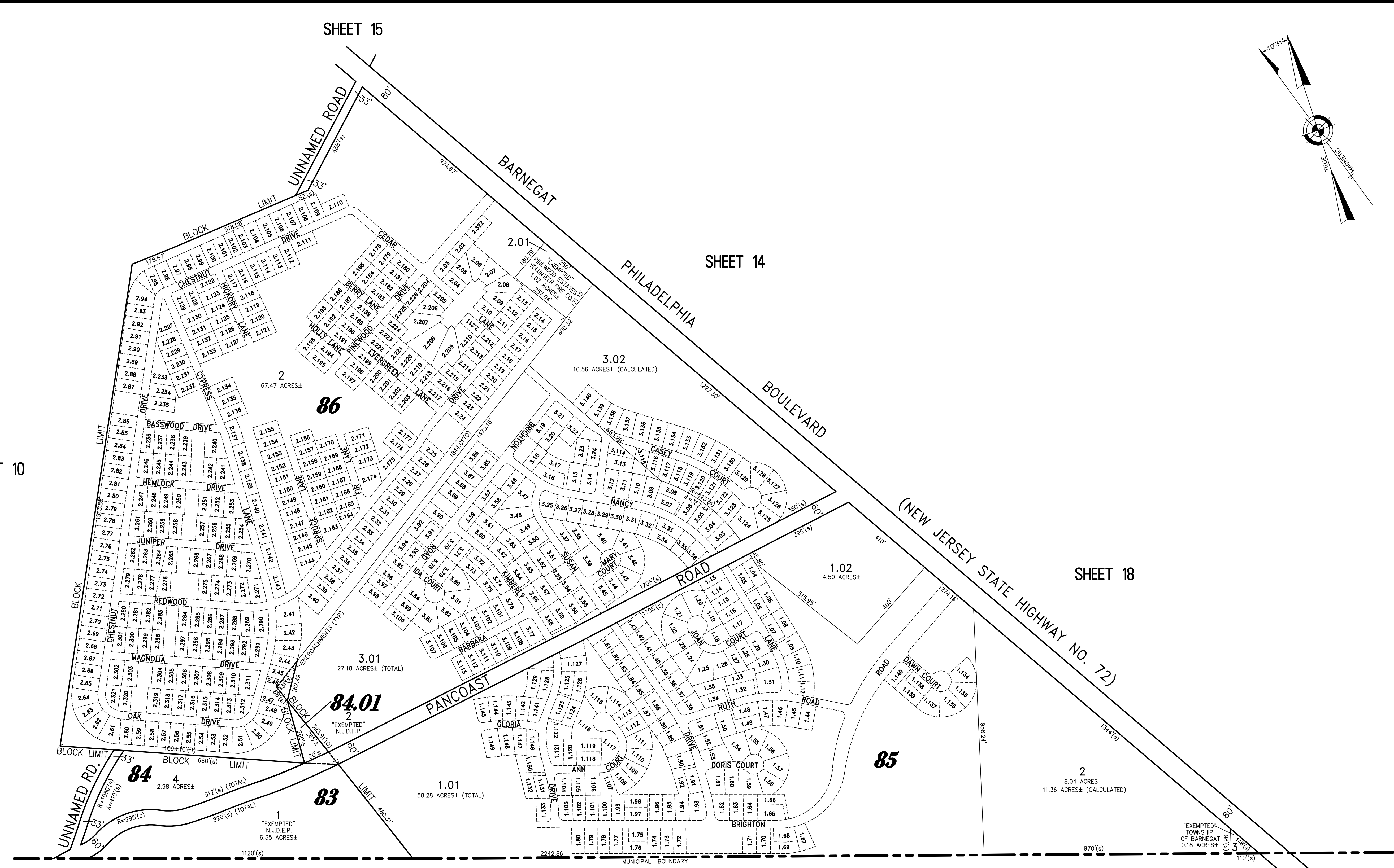
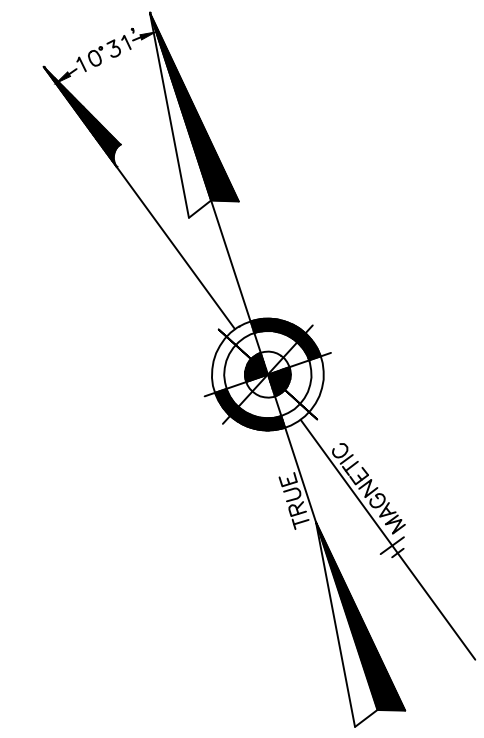


REVISIONS		
12-31-2008	CRAIG F. REMINGTON	23924
11-1-2012	CRAIG F. REMINGTON	23924
3-12-2013	CRAIG F. REMINGTON	23924



**TOWNSHIP OF STAFFORD
COUNTY OF OCEAN**

**TAX MAP
TOWNSHIP OF BARNEGAT**

OCEAN COUNTY NEW JERSEY
SCALE: 1" = 100' DATE: 4-12-2005

CRAIG F. REMINGTON LAND SURVEYOR LIC. NO. 23924

"THIS TAX MAP PLATE HAS BEEN DIGITALLY DRAWN USING COMPUTER-AIDED DRAFTING/DESIGN (CADD) AND COORDINATE GEOMETRY (COGO). IT IS BASED ON THE ORIGINAL DIGITALLY DRAWN TAX MAP PLATE BEARING THE OFFICIAL NEW JERSEY DIVISION OF TAXATION APPROVAL STAMP WITH APPROVAL DATE (7-31-2006) SERIAL NUMBER (896) AND SIGNATURES OF SIGNERS: JAMES J. COLL, CHIEF, LOCAL ASSESSMENT; SANTO C. DIDONATO, SUPERVISING FIELD REPRESENTATIVE. THE ORIGINAL DIGITALLY DRAWN TAX MAP PLATE WITH THE OFFICIAL APPROVAL STAMP IS ON FILE WITH THE TOWNSHIP OF BARNEGAT ENGINEER."

REMINGTON, VERNICK & VENA ENGINEERS
24 GA 28003300
9 ALLEN STREET, TOMS RIVER, N.J. 08753
(732) 286-9220, FAX (732) 505-8446
WEB SITE ADDRESS: WWW.RVE.COM

TO SHOW CONDITIONS AS OF 11-23-2011