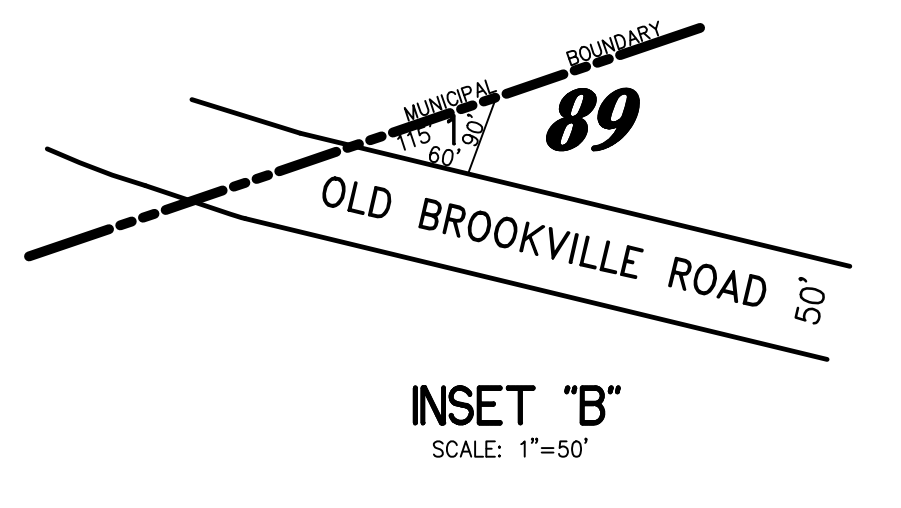
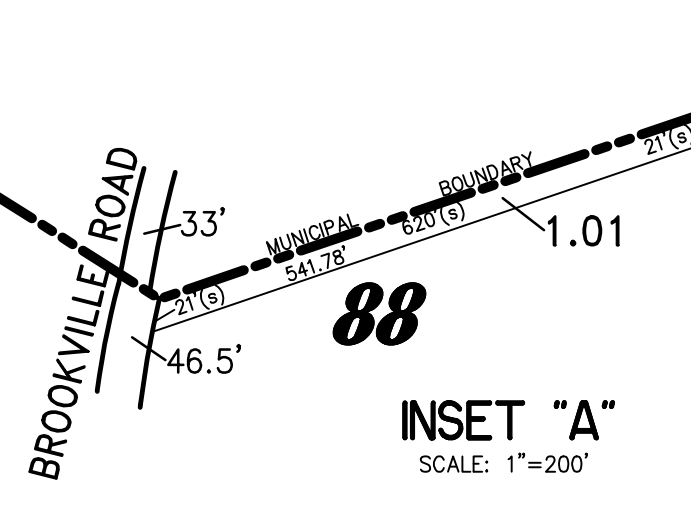
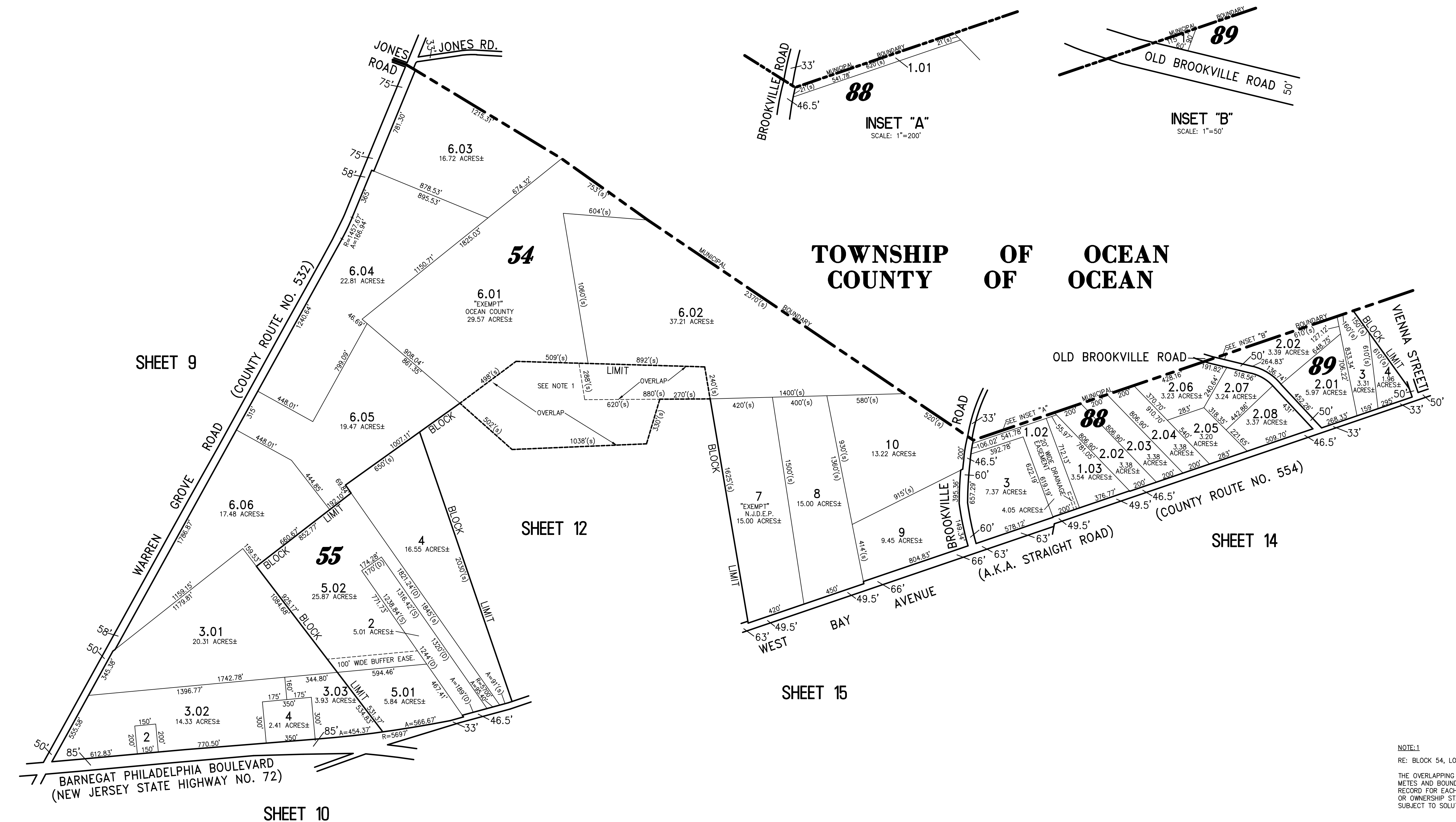
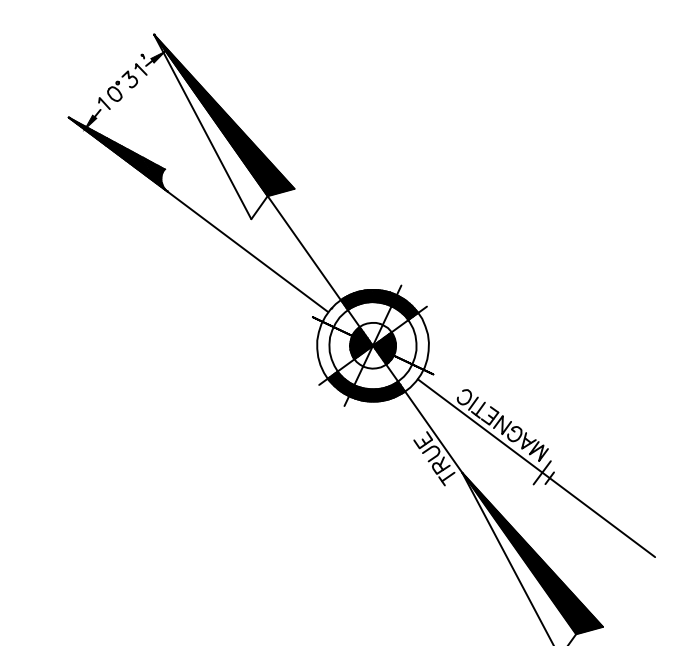



REVISIONS		
11-27-2006	CRAIG F. REMINGTON	23924
11-1-2007	CRAIG F. REMINGTON	23924
2-22-2012	CRAIG F. REMINGTON	23924
3-12-2013	CRAIG F. REMINGTON	23924
12-5-2016	CHARLES E. ADAMSON	42627
11-28-2017	CHARLES E. ADAMSON	42627



NOTE:1  
 RE: BLOCK 54, LOTS 6, 6.01, & 6.02 AND LOTS DETAILED ON SHEET 11.  
 THE OVERLAPPING LINES SHOWN ARE PLOTTED IN ACCORDANCE WITH THE METES AND BOUNDS DESCRIPTIONS APPEARING IN THE LAST DEED OF RECORD FOR EACH PARCEL AND DO NOT PURPORT TO REPRESENT TITLE OR OWNERSHIP STATUS IN ANY MANNER. THESE SITUATIONS ARE SUBJECT TO SOLUTION BY THE PROPERTY OWNERS CONCERNED.

"THIS TAX MAP PLATE HAS BEEN DIGITALLY DRAWN USING COMPUTER-AIDED DRAFTING/DESIGN (CADD) AND COORDINATE GEOMETRY (COGO). IT IS BASED ON THE ORIGINAL DIGITALLY DRAWN TAX MAP PLATE BEARING THE OFFICIAL NEW JERSEY DIVISION OF TAXATION APPROVAL STAMP WITH APPROVAL DATE (7-31-2006) SERIAL NUMBER (896) AND SIGNATURES OF SIGNERS: JAMES J. COLL, CHIEF, LOCAL ASSESSMENT; SANTO C. DIDONATO, SUPERVISING FIELD REPRESENTATIVE. THE ORIGINAL DIGITALLY DRAWN TAX MAP PLATE WITH THE OFFICIAL APPROVAL STAMP IS ON FILE WITH THE TOWNSHIP OF BARNEGAT ENGINEER."

**TAX MAP**  
**TOWNSHIP OF BARNEGAT**  
 OCEAN COUNTY NEW JERSEY  
 SCALE: 1" = 400' DATE: 4-25-2005  
**CRAIG F. REMINGTON LAND SURVEYOR LIC. NO. 23924**  
  
**REMINGTON, VERNICK & VENA ENGINEERS**  
 9 ALLEN STREET, TOMS RIVER, N.J. 08753  
 (732) 296-9220, FAX (732) 505-846  
 WEB SITE ADDRESS: WWW.RVVE.COM