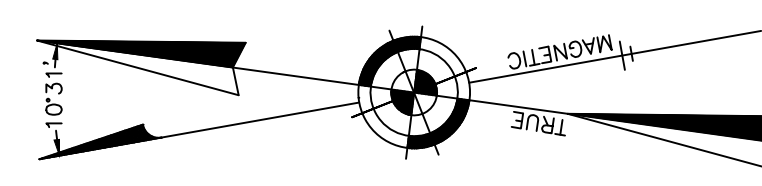


REVISIONS		
6-20-2007	CRAIG F. REMINGTON	23924
12-31-2011	CRAIG F. REMINGTON	23924
12-31-2013	CRAIG F. REMINGTON	23924
12-31-2015	CHARLES E. ADAMSON	42627
2-8-2017	CHARLES E. ADAMSON	42627
11-16-2021	CHARLES E. ADAMSON	42627

NOTE:
1. THE APPARENT GORE LINES & DIMENSIONS SHOWN ARE PLOTTED IN ACCORDANCE WITH THE METES & BOUNDS DESCRIPTIONS APPEARING IN THE LAST DEED/FILED PLAN OF RECORD FOR EACH PARCEL/SUBDIVISION & DO NOT PURPORT TO REPRESENT TITLE OR OWNERSHIP STATUS IN ANY MANNER. THESE SITUATIONS ARE SUBJECT TO SOLUTION BY THE PROPERTY OWNERS CONCERNED. OWNERSHIP UNKNOWN.



"THIS TAX MAP PLATE HAS BEEN DIGITALLY DRAWN USING COMPUTER-AIDED DRAFTING/DESIGN (CADD) AND COORDINATE GEOMETRY (COGO). IT IS BASED ON THE ORIGINAL DIGITALLY DRAWN TAX MAP PLATE BEARING THE OFFICIAL NEW JERSEY DIVISION OF TAXATION APPROVAL STAMP WITH APPROVAL DATE (7-31-2008) SERIAL NUMBER (896) AND SIGNATURES OF SIGNERS' JAMES J. COLL, CHIEF, LOCAL ASSESSMENT, SANTO C. DIDONATO, SUPERVISING FIELD REPRESENTATIVE. THE ORIGINAL DIGITALLY DRAWN TAX MAP PLATE WITH THE OFFICIAL APPROVAL STAMP IS ON FILE WITH THE TOWNSHIP OF BARNEGAT ENGINEER."

TAX MAP

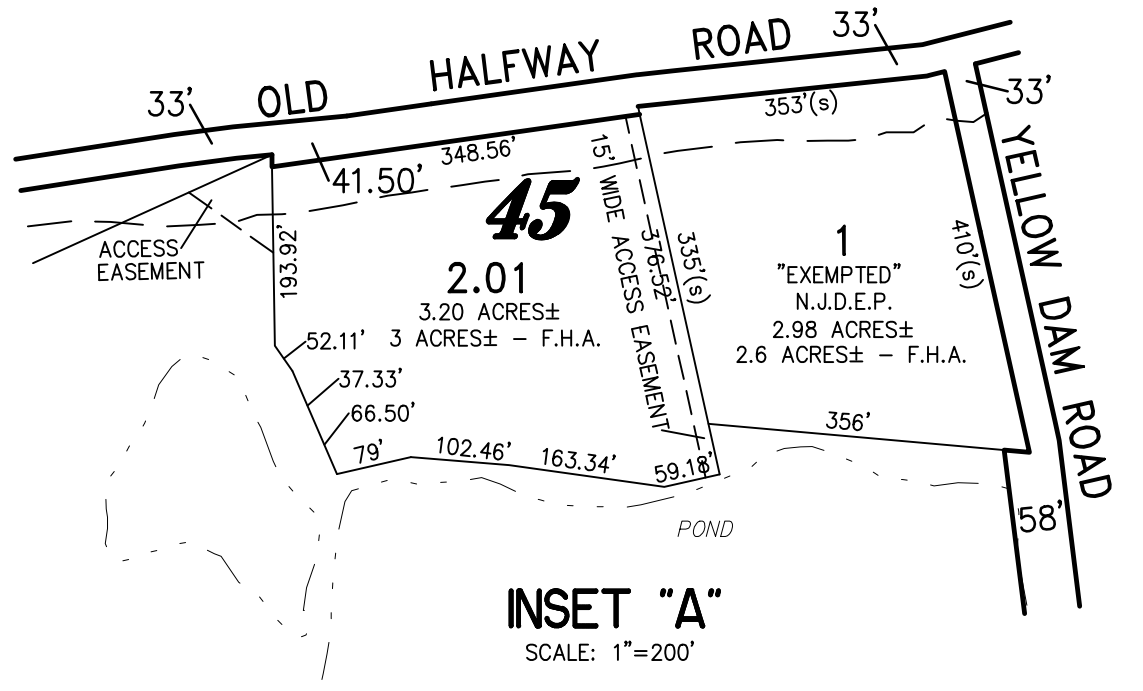
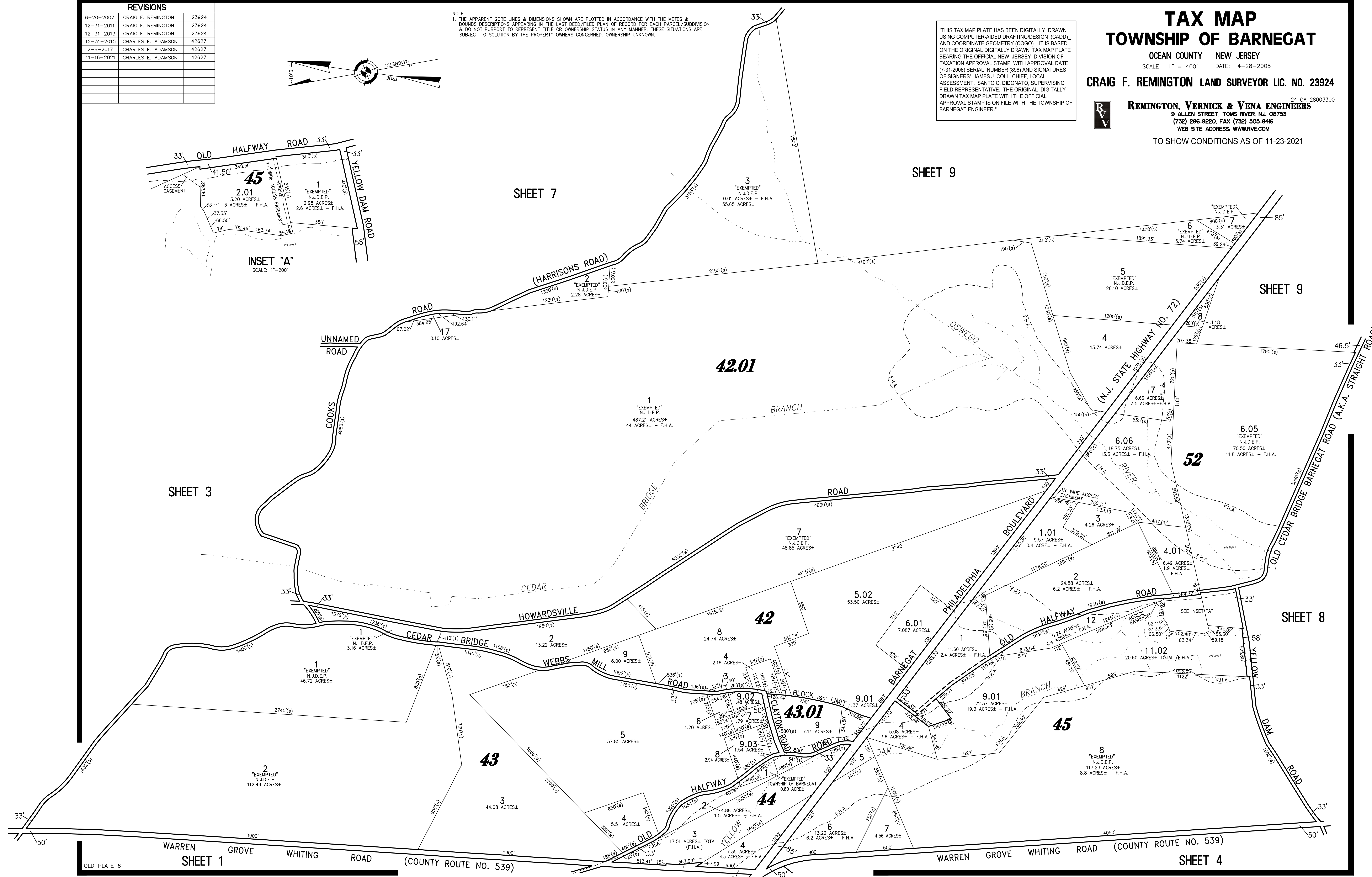
TOWNSHIP OF BARNEGAT

OCEAN COUNTY NEW JERSEY
SCALE: 1" = 400' DATE: 4-28-2005
CRAIG F. REMINGTON LAND SURVEYOR LIC. NO. 23924



24 GA 28003300
REMINGTON, VERNICK & VENA ENGINEERS
9 ALLEN STREET, TOMS RIVER, NJ 08763
(732) 286-9220, FAX (732) 505-8416
WEB SITE ADDRESS: WWW.RVVE.COM

TO SHOW CONDITIONS AS OF 11-23-2021



OLD PLATE 6