

SCHOOL BOARD PRESIDENT

[Signature]
SIGNATURE

CHIEF SCHOOL ADMINISTRATOR

[Signature]
SIGNATURE

ESIP AT ROBERT L. HORBELT ELEMENTARY SCHOOL

104 BURR ST, BARNEGAT
TOWNSHIP, NJ 08005
FOR
THE

BARNEGAT BOARD OF EDUCATION

600 BARNEGAT BOULEVARD N,
BARNEGAT, NJ 08005

SUPERINTENDENT: DR. BRIAN LATWIS
BUSINESS ADMINISTRATOR: STEPHEN BRENNAN

SPIEZLE COMMISSION NUMBER: 20K019

DOE STATE PROJECT NUMBER(S): 29-0185-070-21-1000

JOHNSON & URBAN LLC.
MEP ENGINEERS



CHA CONSULTANTS
ESIP ENGINEERS

SPIEZLE ARCHITECTURAL GROUP, INC
1395 YARDVILLE HAMILTON SQUARE ROAD, SUITE 2A HAMILTON, NJ
08691
PHONE: 609.695.7400 FAX: 609.394.2274
WWW.SPIEZLE.COM

DOE SUBMISSION: 9/28/20

DOE SCHEMATIC SUBMISSION

ESIP AT ROBERT L.
HORBELT ELEMENTARY
SCHOOL
20K019
DOE1.0



SPIEZE ARCHITECTURAL GROUP, INC.
1395 YARDVILLE HAMILTON SQUARE ROAD
SUITE 2A
HAMILTON, NJ 08691
Phone: 609-695-7400

SIGNATURE:
THOMAS S. PERRINO 2 IAD1 505400
SCOTT S. DOMINE 2 IAD1 674400
STEVEN LODGE 2 IAD1 170100
STEVEN G. SEGEL 2 IAD1 564000
SPIEZE ARCHITECTURAL GROUP, INC. 2 IAD0063000

SEAL:

CONSULTANTS:

DOE SCHEMATIC SUBMISSION

PROJECT:
ESIP AT ROBERT L. HORBELT ELEMENTARY SCHOOL

104 BURR ST, BARNEGAT TOWNSHIP, NJ 08005

FOR:
BARNEGAT BOARD OF EDUCATION

600 BARNEGAT BOULEVARD N, BARNEGAT, NJ 08005

FOR CODE REVIEW: DDMMYYYY

REVISIONS:	REVISION NAME	DATE
1		

FOR BID: DDMMYYYY

DRAWING TITLE:

FIRST AND SECOND FLOOR PLAN

COMMISSION NUMBER:
20K019

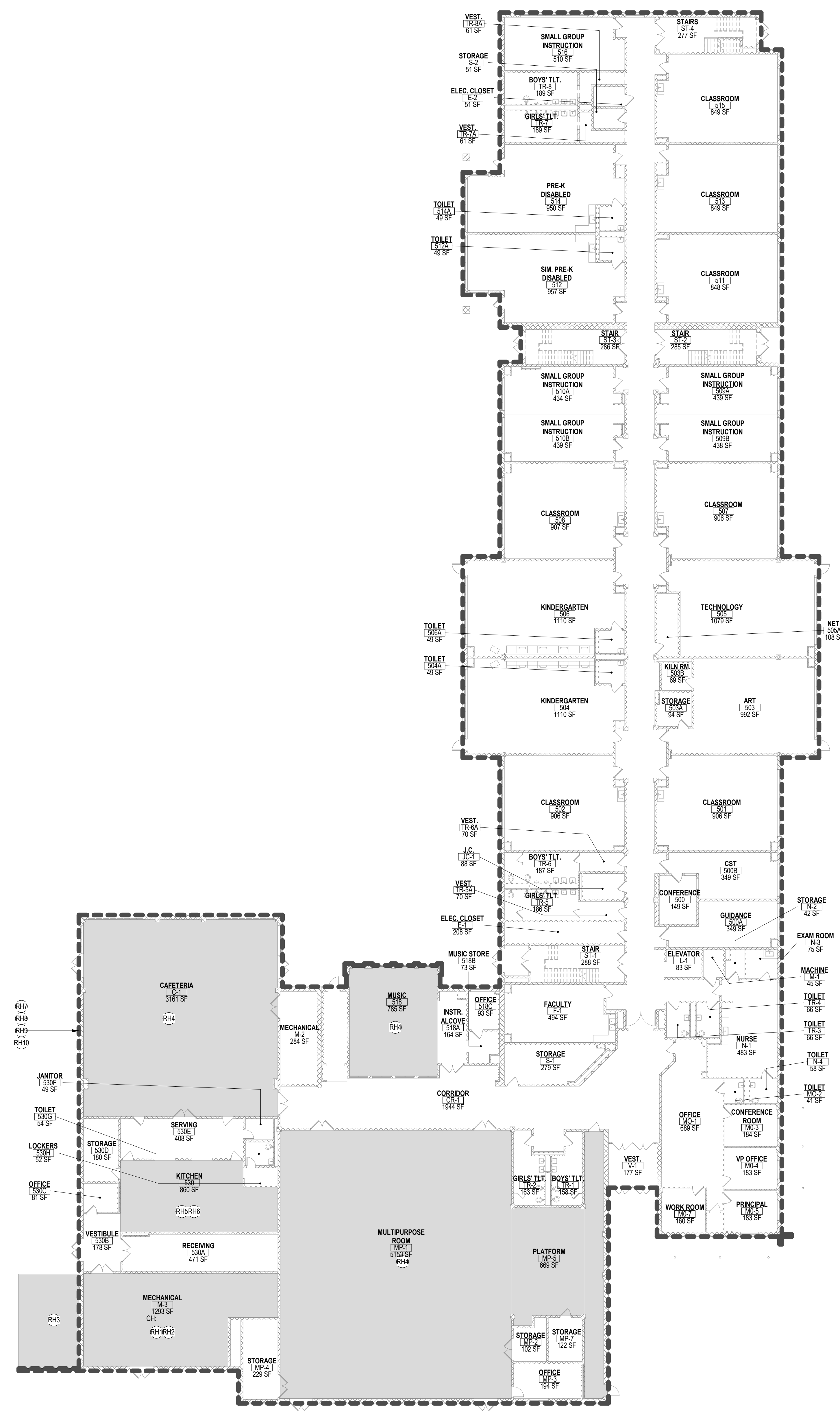
AGENCY NUMBER:
29-0185-070-21-1000

DO NOT SCALE THE DRAWINGS

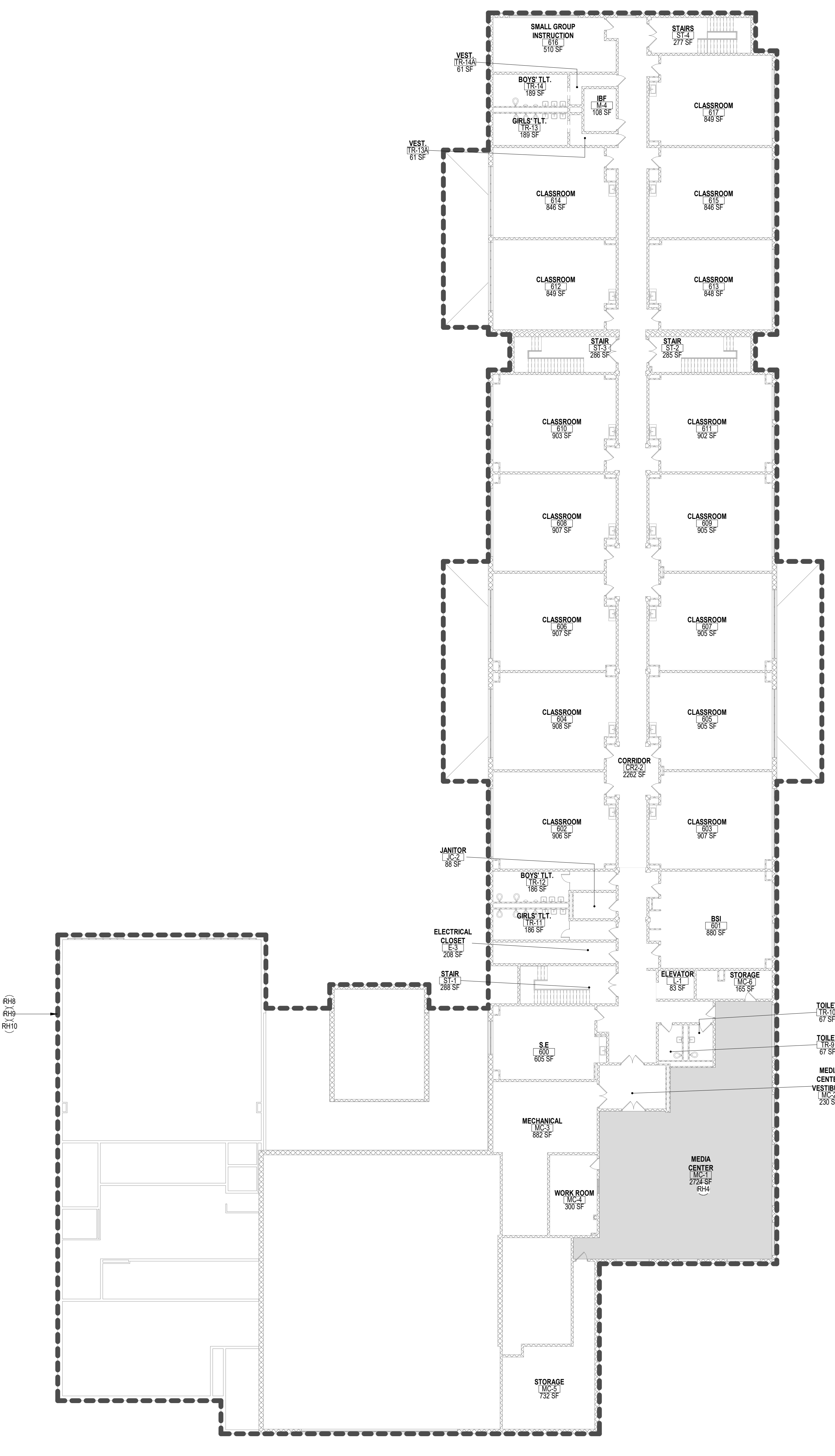
DRAWING NUMBER:
RH-DOE 1.1

THIS DRAWING IS FORMATTED TO BE PRINTED AT 30"x42"

Scale bars for various drawing sections: 3/8"=1'-0", 1/2"=1'-0", 3/4"=1'-0", 1"=1'-0", 1 1/2"=1'-0", 2"=1'-0", 3"=1'-0", 4"=1'-0", 6"=1'-0", 8"=1'-0", 12"=1'-0



1 FIRST FLOOR PLAN
1/16" = 1'-0"



2 SECOND FLOOR PLAN
1/16" = 1'-0"

APPLICABLE CODES (NJ)

1. NJ UNIFORM CONSTRUCTION CODE - N.J.A.C. 5:23
2. INTERNATIONAL BUILDING CODE - 2018 NEW JERSEY EDITION
3. NATIONAL STANDARD PLUMBING CODE - 2018
4. NATIONAL ELECTRICAL CODE (NFPA 70) - 2017
5. ENERGY SUBCODE - ASHRAE 90.1-2016
6. INTERNATIONAL MECHANICAL CODE - 2018
7. INTERNATIONAL FUEL GAS CODE - 2018
8. REHABILITATION SUBCODE - N.J.A.C. 5:23-6
9. BARRIER FREE SUBCODE - CHAPTER 11 OF BC-2018 & ICC/ANSI A117.1-2009
10. ELEVATOR SUBCODE - N.J.A.C. 5:23-12

GENERAL NOTES

1. THESE PROJECTS WILL NOT CHANGE ROOM AREAS OR EXISTING CEILING HEIGHTS.
2. CLASSROOMS AND INSTRUCTIONAL AREAS WILL HAVE A MINIMUM OF 80 FOOT-CANDLES.
3. RECEPTION ROOMS, GYMNASIUMS, STAGE AREAS AND THE LIKE WILL HAVE A MINIMUM OF 30 FOOT-CANDLES.
4. LOCKER ROOMS, CORRIDORS, TOILET ROOMS AND STAIRS WILL HAVE A MINIMUM OF 10 FOOT-CANDLES.
5. NEW SOLAR CANOPIES IN THE PARKING LOTS WILL NOT CHANGE THE EXISTING TRAFFIC PATTERNS.

DOE RH KEYNOTE LEGEND

Key Value	Keynote Text
RH1	HVAC SYSTEMS MEASURES - REPLACE EXISTING ELECTRIC HOT WATER HEATER FOR MUSIC ROOM WITH A HIGH EFFICIENCY, NATURAL GAS FIRED, TANKLESS DHW HEATER.
RH2	HVAC SYSTEMS MEASURES - REPLACE 7 WATER SOURCE HEAT PUMPS THAT SERVICE THE GYMNASIUM, STAGE AND SOME CLASSROOMS WITH NEW HIGH EFFICIENCY UNITS.
RH3	HVAC SYSTEMS MEASURES - REPLACE COOLING TOWER WITH A VFD EQUIPPED, HIGH EFFICIENCY, CLOSED CIRCUIT, AXIAL FAN COOLING TOWER.
RH4	CONTROLS SYSTEM UPGRADES - INSTALL CO2 SENSORS IN GYMNASIUM, CAFETERIA, MEDIA CENTER, MUSIC ROOM AND STAGE SPACES TO ALLOW OR FLOWS TO BE REDUCED AS CONDITIONS ALLOW.
RH5	CONTROLS SYSTEM UPGRADES - REPLACE EXISTING EVAPORATOR FAN MOTORS WITH HIGH EFFICIENCY EC MOTORS AND INSTALL CONTROLS ON EXISTING WALK-IN REFRIGERATOR AND FREEZER.
RH6	CONTROLS SYSTEM UPGRADES - INSTALL CONTROLS ON EXISTING KITCHEN EXHAUST HOOD TO ADJUST ON DAMPER POSITION.
RH7	CONTROLS SYSTEM UPGRADES - INSTALL OCCUPANCY-BASED CONTROLS ON 3 VENDING MACHINES.
RH8	INTERIOR LED LIGHTING UPGRADES - CONVERT ALL NONLED FIXTURES AND LAMPS TO LED. ALL LINEAR FLUORESCENT LAMP CONVERSIONS TO BE SELF-DRIVEN BALLAST BYPASS LED LAMPS. ALL OTHER LIGHTING CONVERSIONS WILL BE A COMBINATION OF PLUG-AND-PLAY (PNP) LAMPS AND NEW LED FIXTURES. INSTALL LIGHTING CONTROLS ON LIGHTING SYSTEMS.
RH9	EXTERIOR LED LIGHTING UPGRADES - REMOVE ALL EXTERIOR HID LAMPS AND CFLS AND REPLACE WITH LED LIGHTING LAMPS AND FIXTURES.
RH10	INSTALL LOW FLOW AERATORS ON 47 FAUCETS AND LABS/LOP SINK IN BUILDING.

CODE REVIEW:

CERTIFICATE:

spiezie

SPIEZLE ARCHITECTURAL GROUP INC.
1395 YARDVILLE HAMILTON SQUARE ROAD
SUITE 2A
HAMILTON, NJ 08691
Phone: 609-695-7400

SIGNATURE:
THOMAS S. PERRINO 2 IAD1505400
SCOTT E. DONNE 2 IAD16174400
STEVEN LODGE 2 IAD1170100
STEVEN G. SIEGEL 2 IAD1554800
SPIEZLE ARCHITECTURAL GROUP, INC. 2 IAC00063000

SEAL:

CONSULTANTS:

DOE SCHEMATIC
SUBMISSION

PROJECT:
ESIP AT ROBERT L.
HORBELT
ELEMENTARY SCHOOL

FOR
BARNEGAT BOARD
OF EDUCATION
600 BARNEGAT BOULEVARD N.
BARNEGAT, NJ 08005

FOR CODE REVIEW: DDMMYYYY

REVISIONS:	REVISION NAME	DATE
1		

FOR BID: DDMMYYYY

DRAWING TITLE:

SITE PLAN

COMMISSION NUMBER:

20K019

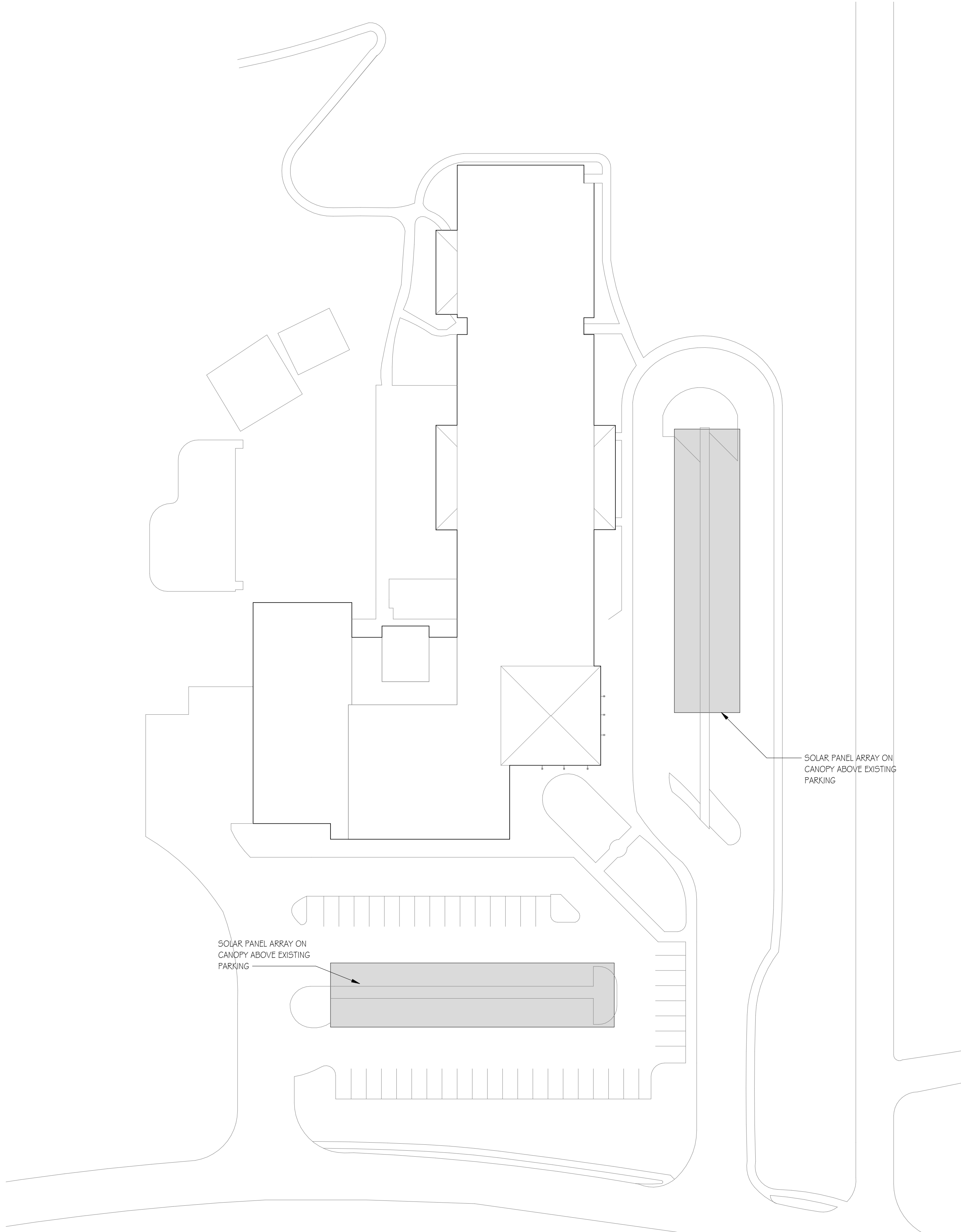
AGENCY NUMBER:

29-0185-070-21-1000

DO NOT SCALE THE DRAWINGS

DRAWING NUMBER:

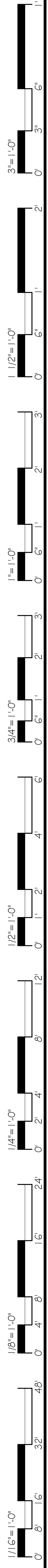
RH-DOE 1.2



GENERAL NOTES

1. THESE PROJECTS WILL NOT CHANGE ROOM AREAS OR EXISTING CEILING HEIGHTS.
2. CLASSROOMS AND INSTRUCTIONAL AREAS WILL HAVE A MINIMUM OF 50 FOOTCANDLES.
3. RECEPTION ROOMS, GYMS, AUDITORIUMS AND THE LIKE WILL HAVE A MINIMUM OF 30 FOOTCANDLES.
4. LOCKER ROOMS, CORRIDORS, TOILET ROOMS AND STAIRS WILL HAVE A MINIMUM OF 10 FOOTCANDLES.
5. NEW SOLAR CANOPIES IN THE PARKING LOTS WILL NOT CHANGE THE EXISTING TRAFFIC PATTERNS.

2 SITE PLAN
1" = 40'-0"



THIS DRAWING IS FORMATTED TO BE PRINTED AT 30x42"