

SCHOOL BOARD PRESIDENT

*[Signature]*  
SIGNATURE

CHIEF SCHOOL ADMINISTRATOR

*[Signature]*  
SIGNATURE

# ESIP AT JOSEPH T. DONAHUE ELEMENTARY SCHOOL

200 BENGAL BLVD, BARNEGAT,  
NJ 08005  
FOR  
THE

## BARNEGAT BOARD OF EDUCATION

600 BARNEGAT BOULEVARD N,  
BARNEGAT, NJ 08005

SUPERINTENDENT: DR. BRIAN LATWIS  
BUSINESS ADMINISTRATOR: STEPHEN BRENNAN

---

SPIEZLE COMMISSION NUMBER: 20K019

DOE STATE PROJECT NUMBER(S): 29-0185-010-80-1000

JOHNSON & URBAN LLC.  
MEP ENGINEERS



CHA CONSULTANTS  
ESIP ENGINEERS

SPIEZLE ARCHITECTURAL GROUP, INC  
1395 YARDVILLE HAMILTON SQUARE ROAD, SUITE 2A HAMILTON, NJ  
08691  
PHONE: 609.695.7400 FAX: 609.394.2274  
WWW.SPIEZLE.COM

DOE SUBMISSION: 9/28/20

DOE SCHEMATIC SUBMISSION

ESIP AT JOSEPH T.  
DONAHUE ELEMENTARY  
SCHOOL  
20K019  
DOE1.0



SPIEZE ARCHITECTURAL GROUP, INC.  
1395 YARDVILLE HAMILTON SQUARE ROAD  
SUITE 2A  
HAMILTON, NJ 08691  
Phone: 609-695-7400

SIGNATURE:  
THOMAS S. PERRINO 2 IAD1 505400  
SCOTT E. DONINE 2 IAD1 614400  
STEVEN LODGE 2 IAD1 170100  
STEVEN G. SESSL 2 IAD1 154300  
SPIEZE ARCHITECTURAL GROUP, INC. 2 IAC0063000

SEAL:

CONSULTANTS:

DOE SCHEMATIC SUBMISSION

PROJECT:  
ESIP AT JOSEPH T. DONAHUE  
ELEMENTARY SCHOOL

200 BENGAL BLVD, BARNEGAT, NJ  
08005

FOR  
BARNEGAT BOARD  
OF EDUCATION  
600 BARNEGAT BOULEVARD N,  
BARNEGAT, NJ 08005

FOR CODE REVIEW: DDMMYYYY

REVISIONS:	REVISION NAME	DATE
1		

FOR BID: DDMMYYYY

DRAWING TITLE:

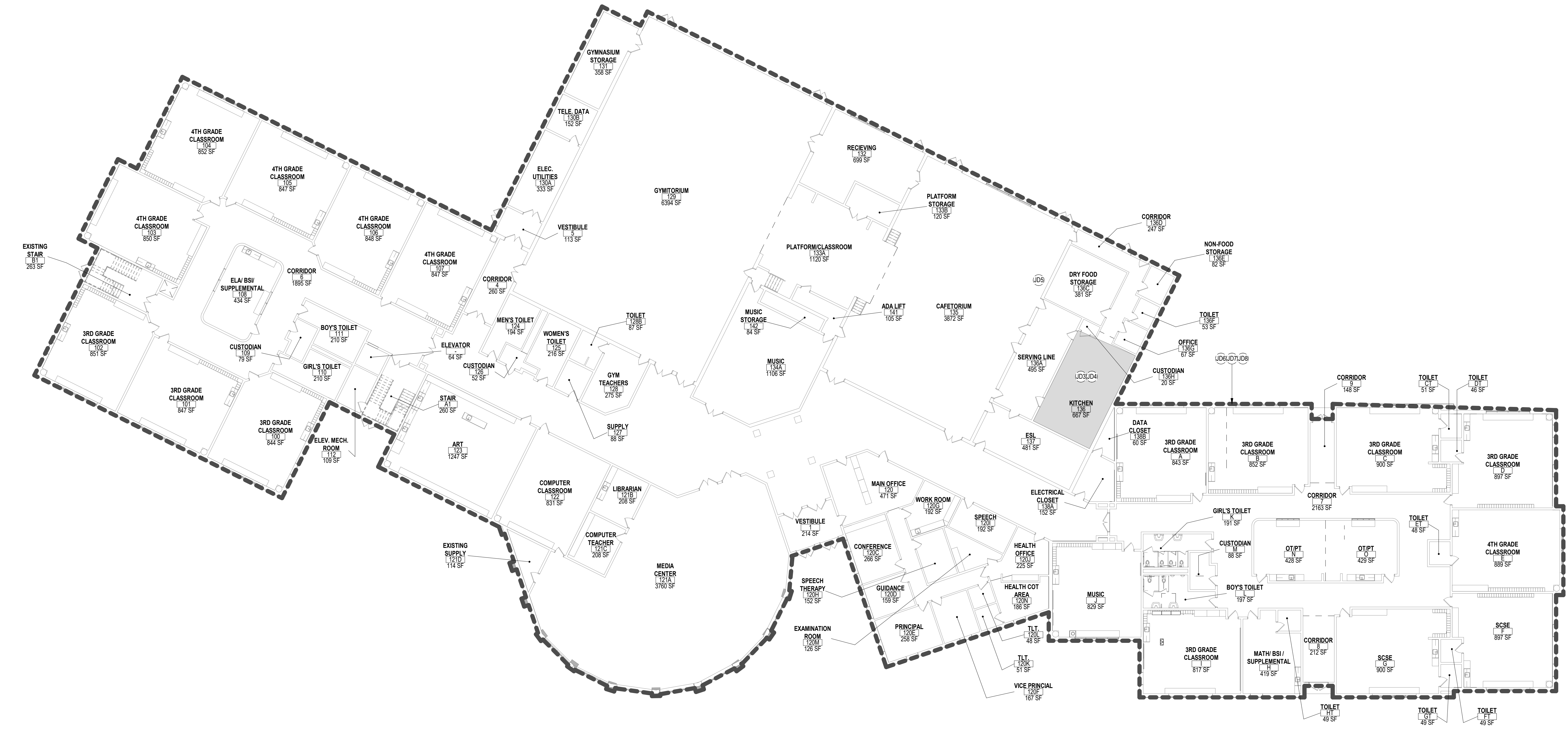
FIRST FLOOR PLAN

COMMISSION NUMBER:  
20K019

AGENCY NUMBER:  
29-0185-010-80-1000

DO NOT SCALE THE DRAWINGS

DRAWING NUMBER:  
JD-DOE 1.1



1 FIRST FLOOR PLAN  
1/16" = 1'-0"

APPLICABLE CODES (NJ)

1. NJ UNIFORM CONSTRUCTION CODE - N.J.A.C. 5:23
2. INTERNATIONAL BUILDING CODE - 2018 NEW JERSEY EDITION
3. NATIONAL STANDARD PLUMBING CODE - 2018
4. NATIONAL ELECTRICAL CODE (NFPA 70) - 2017
5. ENERGY SUBCODE - ASHRAE 90.1-2016
6. INTERNATIONAL MECHANICAL CODE - 2018
7. INTERNATIONAL FUEL GAS CODE - 2018
8. REHABILITATION SUBCODE - N.J.A.C. 5:29-6
9. BARRIER FREE SUBCODE, CHAPTER 11 OF IBC-2018 & ICC/ANSI A117.1-2009
10. ELEVATOR SUBCODE - N.J.A.C. 5:23-12

GENERAL NOTES

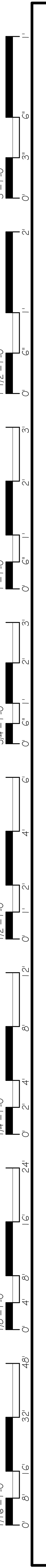
1. THESE PROJECTS WILL NOT CHANGE ROOM AREAS OR EXISTING CEILING HEIGHTS.
2. CLASSROOMS AND INSTRUCTIONAL AREAS WILL HAVE A MINIMUM OF 50 FOOTCANDLES.
3. RECEPTION ROOMS, GYM, AUDITORIUMS AND THE LIKE WILL HAVE A MINIMUM OF 30 FOOTCANDLES.
4. LOCKER ROOMS, CORRIDORS, TOILET ROOMS AND STAIRS WILL HAVE A MINIMUM OF 10 FOOTCANDLES.
5. NEW SOLAR CANOPIES IN THE PARKING LOTS WILL NOT CHANGE THE EXISTING TRAFFIC PATTERNS.

DOE MINIMUM FOOTCANDLES

- MIN 50 FOOTCANDLES- CLASSROOMS AND INSTRUCTIONAL AREAS, MEDIA CENTER, WORK ROOMS, OFFICES, ART ROOM, LABORATORIES, CONFERENCE ROOMS; LIGHTING TO BE A MINIMUM OF 9'-0" A.F.F. IN MEDIA CENTER.
- MIN. 30 FOOTCANDLES- CAFETERIA / GYMNASIUM; LIGHTING TO BE A MINIMUM OF 22' A.F.F. IN GYMNASIUM.
- MIN. 10 FOOTCANDLES- TOILET ROOMS, CORRIDORS WITH LOCKERS AND STAIRWAYS
- MIN 5 FOOTCANDLES- CORRIDORS WITH OUT LOCKERS AND STOREROOMS

DOE JD KEYNOTE LEGEND

Key Value	Keynote Text
JD1	HVAC SYSTEMS MEASURES - REPLACE EXISTING DOMESTIC HOT WATER HEATER AND HIGH EFFICIENCY NATURAL GAS FIRED HEATER.
JD2	HVAC SYSTEMS MEASURES - REPLACE EXISTING CONSTANT OPERATION, ROOF MOUNTED EXHAUST FANS WITH NEW HIGH EFFICIENCY EXHAUST FANS EQUIPPED WITH DIRECT DRIVE EC MOTOR AND AN OPERATING SCHEDULE TO REDUCE RUN TIMES.
JD3	CONTROLS SYSTEM UPGRADES - REPLACE EXISTING EVAPORATOR FAN MOTOR WITH HIGH EFFICIENCY EC MOTORS AND INSTALL CONTROLS ON EXISTING WALK-IN REFRIGERATOR AND FREEZER.
JD4	CONTROLS SYSTEM UPGRADES - INSTALL CONTROLS ON EXISTING KITCHEN HOOD EXHAUST.
JD5	CONTROLS SYSTEM UPGRADES - INSTALL OCCUPANCY-BASED CONTROLS ON 2 VENDING MACHINES.
JD6	INTERIOR LED LIGHTING UPGRADES - CONVERT ALL NON-LED FIXTURES AND LAMPS TO LED. ALL LINEAR FLUORESCENT LAMP CONVERSIONS TO BE SELF DRIVEN BALLAST BYPASS LED LAMPS. ALL OTHER LIGHTING CONVERSIONS WILL BE A COMBINATION OF PLUG-AND-PLAY (PWP) LAMPS AND NEW LED FIXTURES WITH LIGHTING CONTROLS.
JD7	EXTERIOR LIGHTING UPGRADES - REMOVE ALL EXTERIOR HID, CFL44, AND CFL LAMPS. REPLACE WITH LED LIGHTING LAMPS AND FIXTURES.
JD8	INSTALL LOW FLOW AERATORS ON 40 FAUCETS AND LABSLOP SINK IN BUILDING.



CODE REVIEW:

CERTIFICATE:



SPIEZE ARCHITECTURAL GROUP INC.  
1395 YARDVILLE HAMILTON SQUARE ROAD  
SUITE 2A  
HAMILTON, NJ 08691  
Phone: 609-695-7400

SIGNATURE:  
THOMAS S. PERRINO 2 | A01 505400  
SCOTT S. DONNE 2 | A01 674400  
STEVEN LEONE 2 | A01 170100  
STEVEN G. SIEGEL 2 | A01 154300  
SPIEZE ARCHITECTURAL GROUP, INC. 2 | A00063000

SEAL:

CONSULTANTS:

### DOE SCHEMATIC SUBMISSION

PROJECT:  
ESIP AT JOSEPH T. DONAHUE  
ELEMENTARY SCHOOL

200 BENGAL BLVD, BARNEGAT, NJ  
08005

FOR  
BARNEGAT BOARD  
OF EDUCATION

600 BARNEGAT BOULEVARD N,  
BARNEGAT, NJ 08005

FOR CODE REVIEW: DDMYYYY

REVISIONS:	REVISION NAME	DATE
1		

FOR BID: DDMYYYY

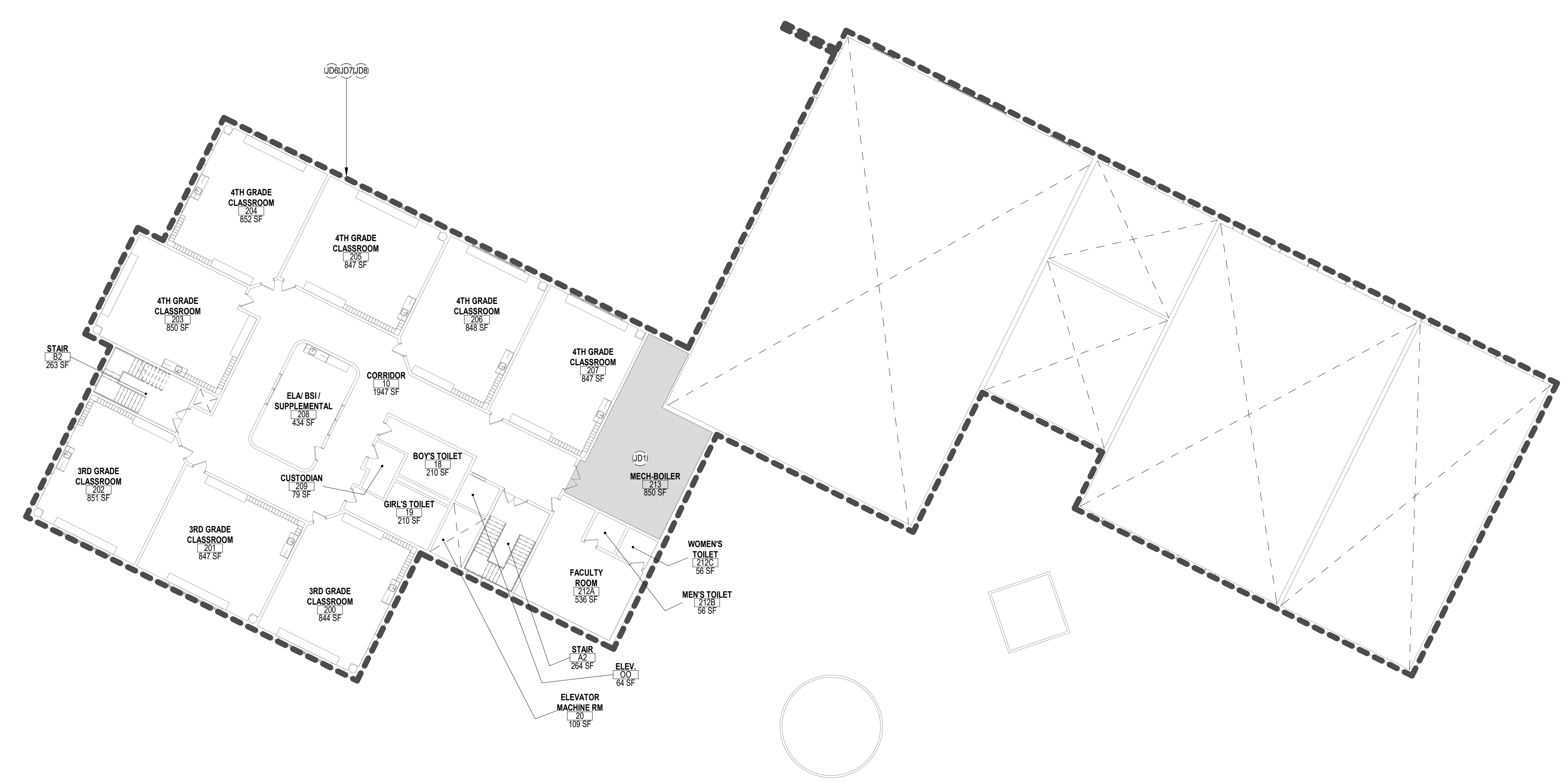
DRAWING TITLE:

## SECOND FLOOR PLAN

COMMISSION NUMBER:  
20K019

AGENCY NUMBER:  
29-0185-010-80-1000  
DO NOT SCALE THE DRAWINGS

DRAWING NUMBER:  
JD-DOE 1.2



1 SECOND FLOOR PLAN  
1/16" = 1'-0"

### APPLICABLE CODES (NJ)

1. NJ UNIFORM CONSTRUCTION CODE - N.J.A.C. 5:23
2. INTERNATIONAL BUILDING CODE - 2018 NEW JERSEY EDITION
3. NATIONAL STANDARD PLUMBING CODE - 2018
4. NATIONAL ELECTRICAL CODE (NFPA 70) - 2017
5. ENERGY SUBCODE - ASHRAE 90.1-2016
6. INTERNATIONAL MECHANICAL CODE - 2018
7. INTERNATIONAL FUEL GAS CODE - 2018
8. REHABILITATION SUBCODE - N.J.A.C. 5:23-6
9. BARRIER FREE SUBCODE, CHAPTER 11 OF: IBC-2018 & ICCANSI A117.1-2009
10. ELEVATOR SUBCODE - N.J.A.C. 5:23-12

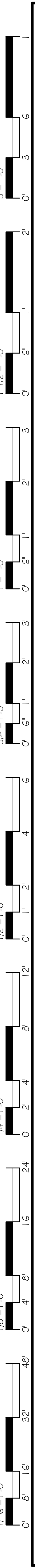
### GENERAL NOTES

1. THESE PROJECTS WILL NOT CHANGE ROOM AREAS OR EXISTING CEILING HEIGHTS.
2. CLASSROOMS AND INSTRUCTIONAL AREAS WILL HAVE A MINIMUM OF 50 FOOTCANDLES.
3. RECEPTION ROOMS, GYMS, AUDITORIUMS AND THE LIKE WILL HAVE A MINIMUM OF 30 FOOTCANDLES.
4. LOCKER ROOMS, CORRIDORS, TOILET ROOMS AND STAIRS WILL HAVE A MINIMUM OF 10 FOOTCANDLES.
5. NEW SOLAR CANOPIES IN THE PARKING LOTS WILL NOT CHANGE THE EXISTING TRAFFIC PATTERNS.

### DOE MINIMUM FOOTCANDLES

- MIN. 50 FOOTCANDLES- CLASSROOMS AND INSTRUCTIONAL AREAS, MEDIA CENTER, WORK ROOMS, OFFICES, ART ROOM, LABORATORIES, CONFERENCE ROOMS, LIGHTING TO BE A MINIMUM OF 9'-6" A.F.F. IN MEDIA CENTER.
- MIN. 30 FOOTCANDLES- CAFETERIA / GYMNASIUM; LIGHTING TO BE A MINIMUM OF 22' A.F.F. IN GYMNASIUM.
- MIN. 10 FOOTCANDLES- TOILET ROOMS, CORRIDORS WITH LOCKERS AND STAIRWAYS
- MIN 5 FOOTCANDLES- CORRIDORS WITH OUT LOCKERS AND STOREROOMS

_DOE_ID KEYNOTE LEGEND	
Key Value	Keynote Text
JD1	HVAC SYSTEMS MEASURES - REPLACE EXISTING DOMESTIC HOT WATER HEATER AND HIGH EFFICIENCY NATURAL GAS FIRED HEATER.
JD2	HVAC SYSTEMS MEASURES - REPLACE EXISTING CONSTANT OPERATION ROOF MOUNTED EXHAUST FANS WITH NEW HIGH EFFICIENCY EXHAUST FANS EQUIPPED WITH DIRECT DRIVE EC MOTOR AND AN OPERATING SCHEDULE TO REDUCE RUN TIMES.
JD3	CONTROLS SYSTEM UPGRADES - REPLACE EXISTING EVAPORATOR FAN MOTOR WITH HIGH EFFICIENCY EC MOTORS AND INSTALL CONTROLS ON EXISTING WALK-IN REFRIGERATOR AND FREEZER.
JD4	CONTROLS SYSTEM UPGRADES - INSTALL CONTROLS ON EXISTING KITCHEN HOOD EXHAUST.
JD5	CONTROLS SYSTEM UPGRADES - INSTALL OCCUPANCY-BASED CONTROLS ON 2 VENDING MACHINES.
JD6	INTERIOR LED LIGHTING UPGRADES - CONVERT ALL NON-LED FIXTURES AND LAMPS TO LED. ALL LINEAR FLUORESCENT LAMP CONVERSIONS TO BE SELF DRIVEN BALLAST BYPASS LED LAMPS. ALL OTHER LIGHTING CONVERSIONS WILL BE A COMBINATION OF PLUS-AND-PLAY (PAP) LAMPS AND NEW LED FIXTURES WITH LIGHTING CONTROLS.
JD7	EXTERIOR LIGHTING UPGRADES - REMOVE ALL EXTERIOR HID, CFL44, AND CFL LAMPS. REPLACE WITH LED LIGHTING LAMPS AND FIXTURES.
JD8	INSTALL LOW FLOW AERATORS ON 40 FAUCETS AND LAB/SLOP SINK IN BUILDING.



THIS DRAWING IS FORMATTED TO BE PRINTED AT 30"x42"

CODE REVIEW:

CERTIFICATE:



SPIEZLE ARCHITECTURAL GROUP INC.  
1395 YARDVILLE HAMILTON SQUARE ROAD  
SUITE 2A  
HAMILTON, NJ 08691  
Phone: 609-695-7400

SIGNATURE:  
THOMAS S. PERRINO 21A01200400  
SCOTT E. DONNE 21A01674400  
STEVEN LONIE 21A01170100  
STEVEN G. SIEGEL 21A01544000  
SPIEZLE ARCHITECTURAL GROUP, INC. 21A00063000

SEAL:

CONSULTANTS:

DOE SCHEMATIC  
SUBMISSION

PROJECT:  
ESIP AT JOSEPH T.  
DONAHUE  
ELEMENTARY SCHOOL

200 BENGAL BLVD, BARNEGAT, NJ  
08005

FOR  
BARNEGAT BOARD  
OF EDUCATION

600 BARNEGAT BOULEVARD N,  
BARNEGAT, NJ 08005

FOR CODE REVIEW: DDMMYYYY

REVISIONS:	REVISION NAME	DATE
1		

FOR BID: DDMMYYYY

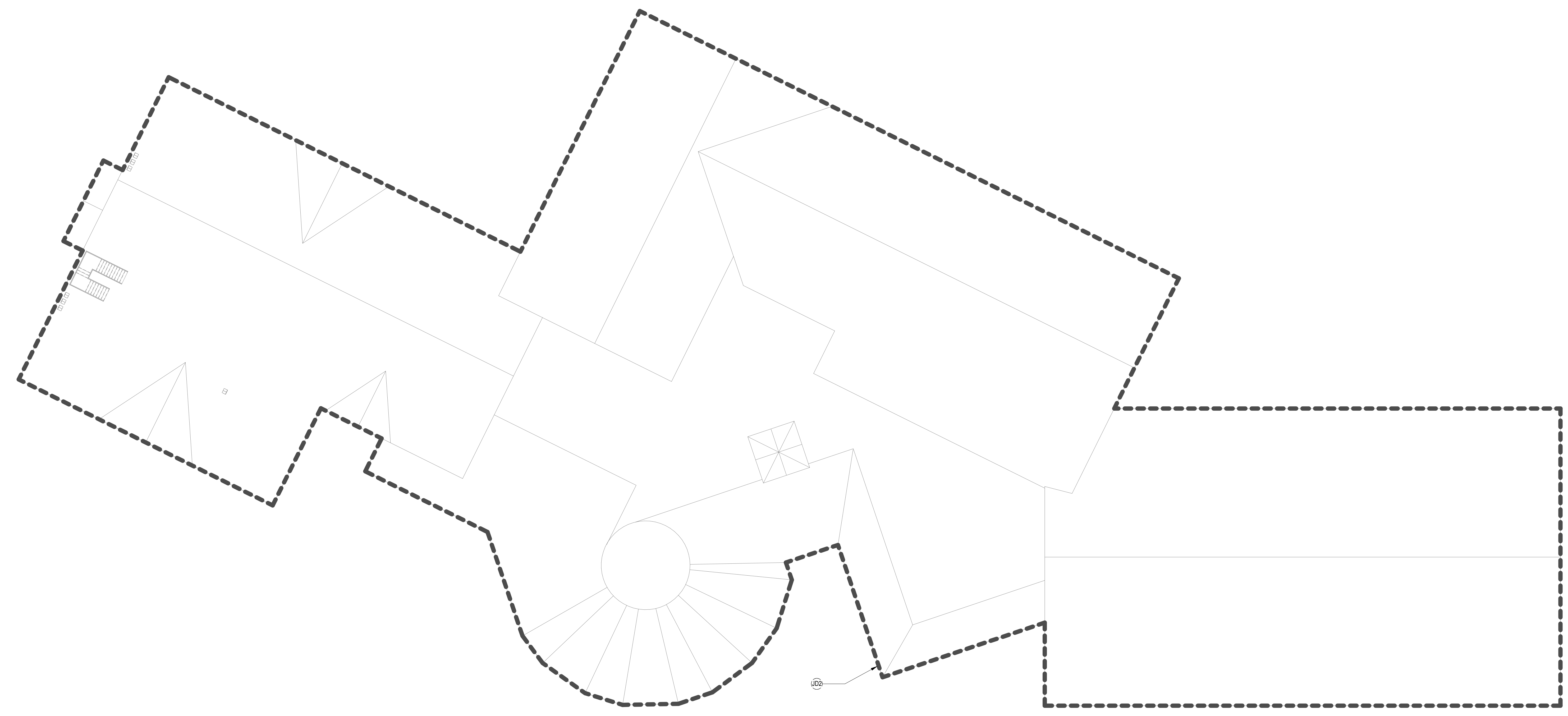
DRAWING TITLE:

ROOF PLAN

COMMISSION NUMBER:  
20K019

AGENCY NUMBER:  
29-0185-010-80-1000  
DO NOT SCALE THE DRAWINGS

DRAWING  
NUMBER:  
JD-DOE 1.3



1 ROOF PLAN  
1/16" = 1'-0"

GENERAL NOTES

- THESE PROJECTS WILL NOT CHANGE ROOM AREAS OR EXISTING CEILING HEIGHTS.
- CLASSROOMS AND INSTRUCTIONAL AREAS WILL HAVE A MINIMUM OF 30 FOOT CANDLES.
- RECEPTION ROOMS, GYM, AUDITORIUMS AND THE LNK WILL HAVE A MINIMUM OF 30 FOOT CANDLES.
- LOCKER ROOMS, CORRIDORS, TOILET ROOMS AND STAIRS WILL HAVE A MINIMUM OF 10 FOOT CANDLES.
- NEW SOLAR CANOPIES IN THE PARKING LOTS WILL NOT CHANGE THE EXISTING TRAFFIC PATTERNS.

\_DOE JD KEYNOTE LEGEND

Key Value	Keynote Text
JD1	HVAC SYSTEMS MEASURES - REPLACE EXISTING DOMESTIC HOT WATER HEATER AND HIGH EFFICIENCY NATURAL GAS FIRED HEATER.
JD2	HVAC SYSTEMS MEASURES - REPLACE EXISTING CONSTANT OPERATION, ROOF MOUNTED EXHAUST FANS WITH NEW HIGH EFFICIENCY EXHAUST FANS EQUIPPED WITH DIRECT DRIVE EC MOTOR AND AN OPERATING SCHEDULE TO REDUCE RUN TIMES.
JD3	CONTROLS SYSTEM UPGRADES - REPLACE EXISTING EVAPORATOR FAN MOTOR WITH HIGH EFFICIENCY EC MOTORS AND INSTALL CONTROLS ON EXISTING WALK-IN REFRIGERATOR AND FREEZER.
JD4	CONTROLS SYSTEM UPGRADES - INSTALL CONTROLS ON EXISTING KITCHEN HOOD EXHAUST.
JD5	CONTROLS SYSTEM UPGRADES - INSTALL OCCUPANCY-BASED CONTROLS ON 2 VENDING MACHINES.
JD6	INTERIOR LED LIGHTING UPGRADES - CONVERT ALL NON-LED FIXTURES AND LAMPS TO LED. ALL LINEAR FLUORESCENT LAMP CONVERSIONS TO BE SELF DRIVEN BALLAST BYPASS LED LAMPS. ALL OTHER LIGHTING CONVERSIONS WILL BE A COMBINATION OF PLUS-AND-PLAY (PAP) LAMPS AND NEW LED FIXTURES WITH LIGHTING CONTROLS.
JD7	EXTERIOR LIGHTING UPGRADES - REMOVE ALL EXTERIOR HID, CFL44, AND CFL LAMPS. REPLACE WITH LED LIGHTING LAMPS AND FIXTURES.
JD8	INSTALL LOW FLOW AERATORS ON 40 FAUCETS AND LAB/SLOP SINK IN BUILDING.



CODE REVIEW:

CERTIFICATE:



SPIZLE ARCHITECTURAL GROUP INC.  
1395 YARDVILLE HAMILTON SQUARE ROAD  
SUITE 2A  
HAMILTON, NJ 08691  
Phone: 609-695-7400

SIGNATURE:  
THOMAS S. PERRINO 2 IAD1505400  
SCOTT S. DONNE 2 IAD15174400  
STEVEN LODGE 2 IAD1170100  
STEVEN G. SIEGEL 2 IAD1554800  
SPIZLE ARCHITECTURAL GROUP, INC. 2 IAC00063000

SEAL:

CONSULTANTS:

DOE SCHEMATIC  
SUBMISSION

PROJECT:  
ESIP AT JOSEPH T.  
DONAHUE  
ELEMENTARY SCHOOL

200 BENGAL BLVD, BARNEGAT, NJ  
08005

FOR

BARNEGAT BOARD  
OF EDUCATION

600 BARNEGAT BOULEVARD N,  
BARNEGAT, NJ 08005

FOR CODE REVIEW: DDMMYYYY

REVISIONS:	REVISION NAME	DATE
1		

FOR BID: DDMMYYYY

DRAWING TITLE:

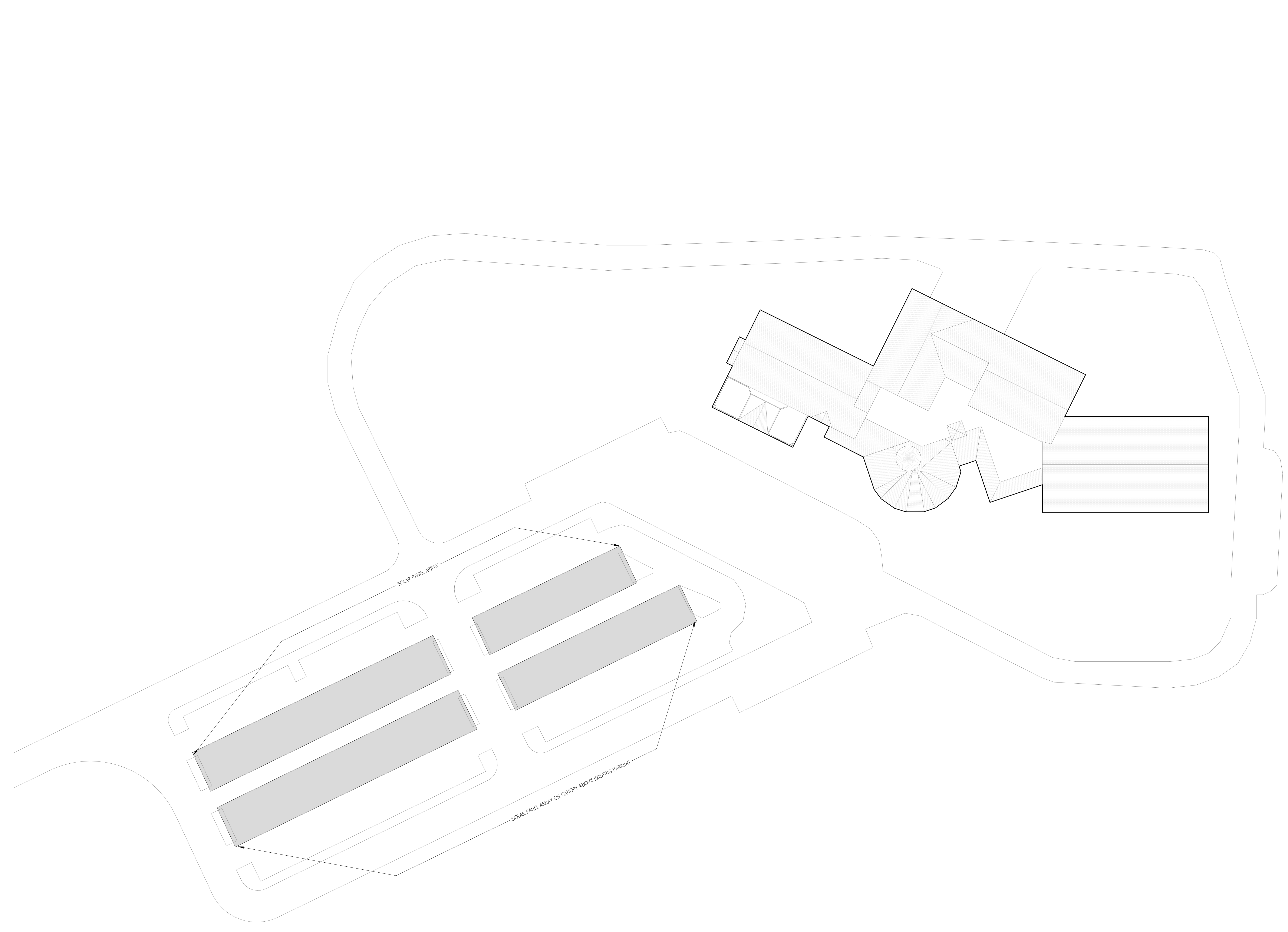
SITE PLAN

COMMISSION NUMBER:  
20K019

AGENCY NUMBER:

DO NOT SCALE THE DRAWINGS

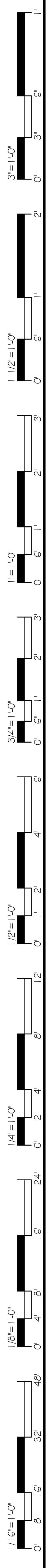
DRAWING  
NUMBER:  
JD-DOE 1.4



1 SITE PLAN  
1" = 40'-0"

GENERAL NOTES

1. THESE PROJECTS WILL NOT CHANGE ROOM AREAS OR EXISTING CEILING HEIGHTS.
2. CLASSROOMS AND INSTRUCTIONAL AREAS WILL HAVE A MINIMUM OF 50 FOOTCANDLES.
3. RECEPTION ROOMS, GYMS, AUDITORIUMS AND THE LIKE WILL HAVE A MINIMUM OF 30 FOOTCANDLES.
4. LOCKER ROOMS, CORRIDORS, TOILET ROOMS AND STAIRS WILL HAVE A MINIMUM OF 10 FOOTCANDLES.
5. NEW SOLAR CANOPIES IN THE PARKING LOTS WILL NOT CHANGE THE EXISTING TRAFFIC PATTERNS.



THIS DRAWING IS FORMATTED TO BE PRINTED AT 30"x42"