

WILLIAM A. STEVENS, P.E., P.D.
 PROFESSIONAL DESIGN SERVICES, L.L.C.
 166 ARBON ROAD SUITE 1100 NEW BRUNSWICK, NJ 08901
 TEL: 732.232.8222 FAX: 732.232.8222
 WWW.WASDESIGN.COM
 CERTIFICATE OF AUTHORIZATION NO. 36232328
 NEW JERSEY STATE BOARD OF P.E. & L.S.

OWNER: SHIPBOARD NEW JERSEY LLC
 PROJECT: 39 UNITS RESIDENTIAL BUILDING A, B, & C
 SHEET: 5 OF 5
 DATE: AUGUST 24, 2020
 JOB NUMBER: 16617
 CHECKED BY: HMB
 DESIGNED BY: KNL/BMK
 DRAWN BY: WMS

SCALE: 1" = 50'
 TOWNSHIP OF BARNEGAT
 OCEAN COUNTY
 NEW JERSEY
BLOCK 92.111 - LOT 24.09
 FOR
AMENDED PRELIMINARY & FINAL MAJOR SITE PLAN

NO.	DATE	DESCRIPTION

STORMWATER BASIN NOTES

1. THE PROJECT DOES NOT CONTAIN ANY HIGH POLLUTANT LOADING AREAS (HPLA) AND SEGREGATION OR PRE-TREATMENT OF RUNOFF IS NOT REQUIRED.
2. THE STORMWATER BASIN HAS BEEN DESIGNED TO MAINTAIN A MINIMUM SEPARATION OF AT LEAST TWO (2) FEET FROM THE BASIN BOTTOM TO THE SEASONAL HIGH WATER TABLE.
3. THE SOIL PERMEABILITY BELOW THE BASIN DOES NOT PERMIT AN EXCESS OF 20 INCHES PER ANCHOR AND NO DETENTION STORAGE IS REQUIRED. THE CLAY LOAM LAYER PRESENT UNDER A PORTION OF THE BASIN MUST BE REMOVED AND REPLACED WITH K-4 SOILS.
4. CARE MUST BE TAKEN DURING CONSTRUCTION TO MINIMIZE COMPACTION OF THE BASIN BOTTOM. THE BASIN AREA MUST BE REMOVED AND FILLED AFTER CONSTRUCTION IS COMPLETED AND THE DRAINAGE AREA IS STABILIZED. NO EARTHWORK MAY BE PERFORMED WHEN SOIL MOISTURE CONTENT IS ABOVE THE LOWER PLASTIC LIMIT.

GRADING & DRAINAGE NOTES:

1. EXISTING TOPOGRAPHY INFORMATION IS NAVD 1988.
2. ALL ROOF LEADERS SHALL CONNECT INTO THE UNDERGROUND RECHARGE DRAINAGE SYSTEM. ROOF LEADER CONNECTION LOCATIONS WILL BE DETERMINED DURING RESOLUTION COMPLIANCE AND FINAL CONNECTION WITH FINAL ARCHITECTURAL PLANS.
3. ALL STORMWATER INLETS TO BE TYPE "B" UNLESS OTHERWISE NOTED.
4. ALL HOPE STORM DRAINAGE TO BE HI-O SURE LOCK 2.0 HIGH STRENGTH PIPE AS MANUFACTURED BY HANCOCK, OR EQUIVALENT, UNLESS OTHERWISE NOTED.
5. ALL PROPOSED LWNV AREAS WILL BE GRADED WITH LIGHT-WEIGHT CONSTRUCTION EQUIPMENT.
6. TOPOGRAPHY SHOWN IS RELATIVE TO PLANS PREPARED BY DYNAMIC ENGINEERING, WHICH HAVE NO DATUM REFERENCE. BASED UPON GPS OBSERVATIONS PERFORMED BY THIS OFFICE THE DATUM OF SAID TOPOGRAPHY IS NAVD 1988.

STORMWATER SYSTEM MAINTENANCE

THE FOLLOWING IS A SUMMARY OF THE REQUIRED MAINTENANCE ACTIVITIES:
 ALL MAINTENANCE FOR EACH STORMWATER MANAGEMENT SYSTEM WILL BE THE RESPONSIBILITY OF THE PROPERTY OWNER AFTER CONSTRUCTION IS COMPLETED.

INFILTRATION SYSTEMS

- INSPECTION & REPAIR (AS NECESSARY) OF STRUCTURES
- DEBRIS REMOVAL
- TILLING OF BASIN BOTTOM
- COLLECTION SYSTEMS
- DEBRIS REMOVAL & CLEANING
- INSPECTION & REPAIR (AS NECESSARY) OF STRUCTURES

CONTOUR LINE

- EXISTING SPOT ELEVATION
- PROPOSED SPOT ELEVATION
- 115.10
- 122.2

LEGEND

- EXISTING WATER LINE
- EXISTING WATER VALVE
- EXISTING SANITARY LINE
- EXISTING SANITARY MANHOLE
- EXISTING SANITARY FORCE MAIN
- PROPOSED SANITARY LINE
- PROPOSED SANITARY VALVE
- EXISTING HYDRANT
- EXISTING WATER CURB STOP
- EXISTING WATER LINE
- EXISTING SANITARY MANHOLE
- PROPOSED CLEANOUT
- PROPOSED DOWNSPOUT
- PROPOSED ROOF DRAIN
- PROPOSED STORM LINE
- PROPOSED FLARED END SECTION
- PROPOSED STORM MANHOLE
- PROPOSED INLET
- PROPOSED CONTOUR LINE
- EXISTING CONTOUR LINE
- 122.2
- 115.10

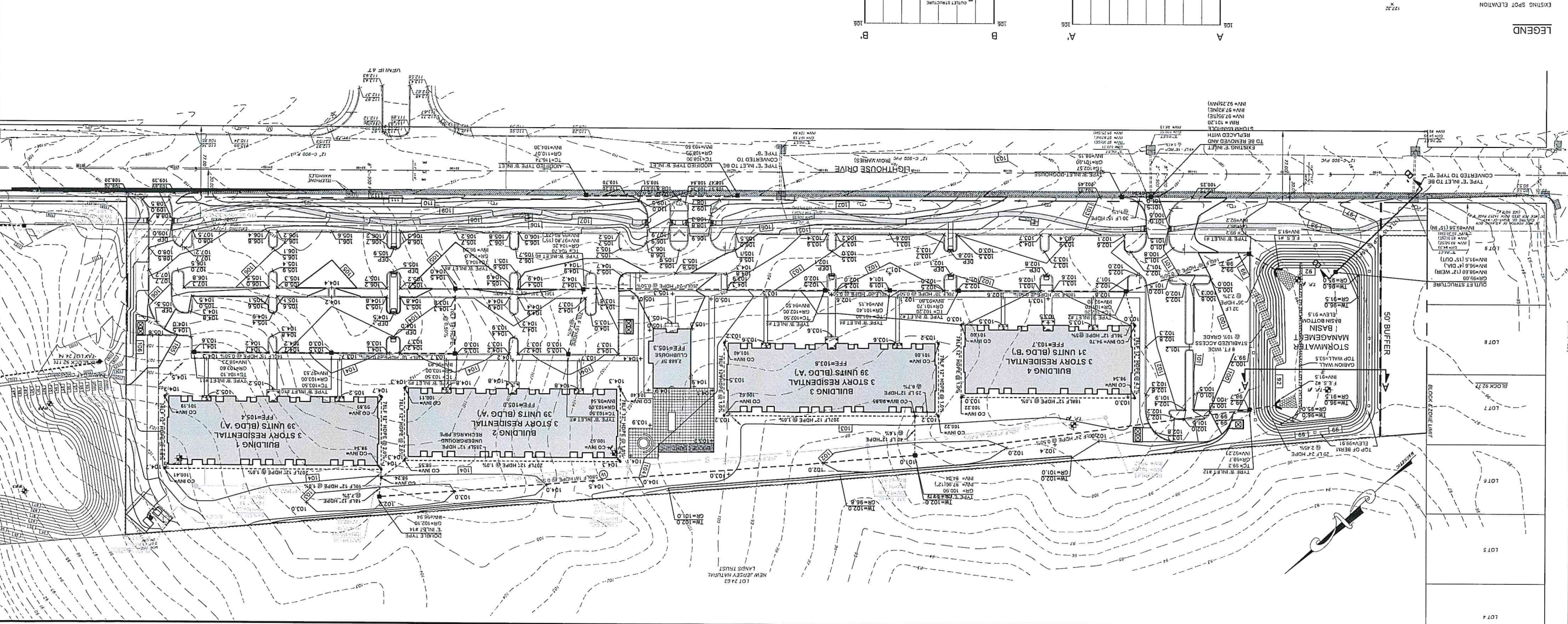
TEST PIT LOG

TEST #1
 ELEV = 97.54
 ORGANIC LAYER
 4/6 10"R SANDY LOAM
 7/1 10"R SAND W/
 6/4 10"R MOTTLE
 NO WATER ENCOUNTERED
 SHMT @ 108" - ELEV = 88.5
 ELEV = 98.84
 ORGANIC LAYER
 5/8 10"R SANDY LOAM
 7/8 10"R LOAMY SAND
 NO SHMT ENCOUNTERED
 PREFAULTY @ 90" = 14.0 INCH/HR
 ELEV = 102.34

TEST #2
 ELEV = 98.84
 ORGANIC LAYER
 5/8 10"R SANDY LOAM
 7/8 10"R LOAMY SAND
 NO SHMT ENCOUNTERED
 PREFAULTY @ 90" = 16.0 INCH/HR
 ELEV = 102.34

TEST #3
 ELEV = 98.04
 ORGANIC LAYER
 4/6 10"R SANDY LOAM
 7/4 10"R MOTTLE
 NO WATER ENCOUNTERED
 PREFAULTY @ 65" = 15.2 INCH/HR
 ELEV = 89.2
 SHMT @ 118" - ELEV = 88.2
 4/2 - 118"
 0 - 6"
 6 - 42"
 42 - 118"

TEST #4
 ELEV = 97.54
 ORGANIC LAYER
 4/6 10"R SANDY LOAM
 7/1 10"R SAND W/
 6/4 10"R MOTTLE
 NO WATER ENCOUNTERED
 SHMT @ 108" - ELEV = 88.5
 ELEV = 98.84
 ORGANIC LAYER
 5/8 10"R SANDY LOAM
 7/8 10"R LOAMY SAND
 NO SHMT ENCOUNTERED
 PREFAULTY @ 90" = 14.0 INCH/HR
 ELEV = 102.34



NO.	DATE	DESCRIPTION

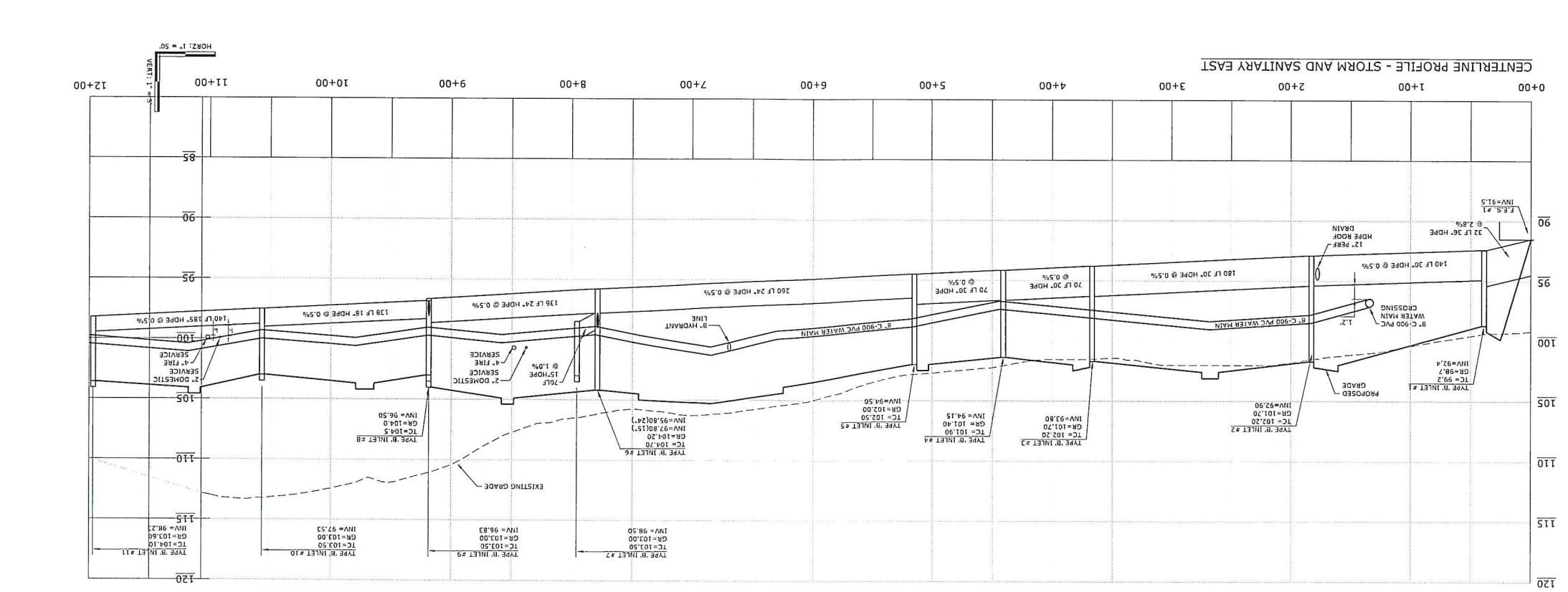
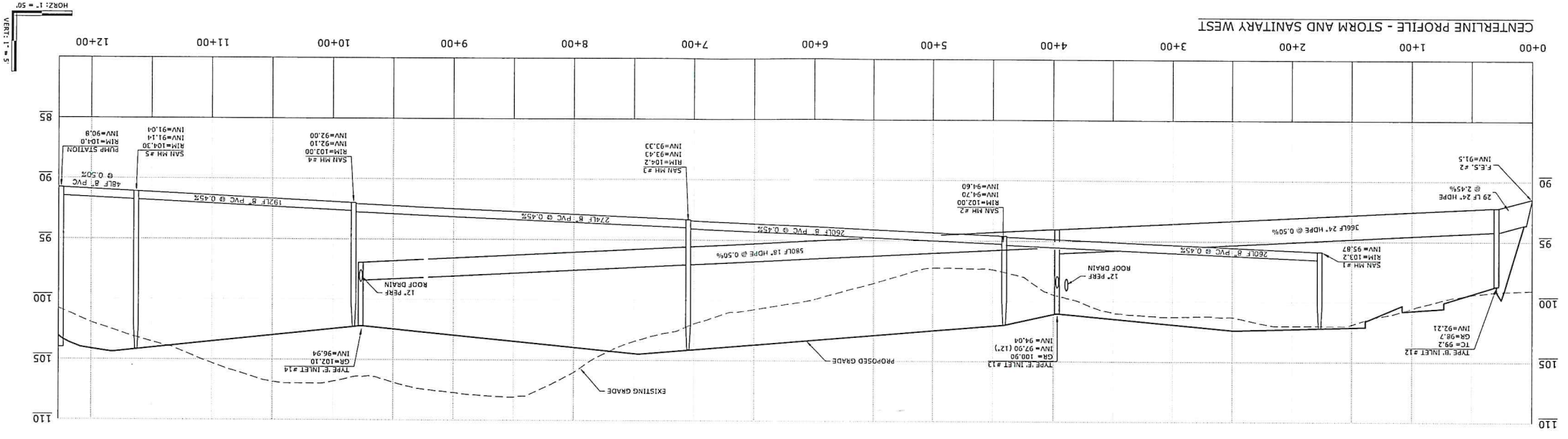
WILLIAM A. STEVENS P.E., P.P.
 PROFESSIONAL ENGINEER NEW JERSEY NO. 3600
 NEW JERSEY BOARD OF P.E. & L.E.
 EXPIRES 12/31/2021 P.M. 12:00 PM
 105 AIRPORT ROAD, SUITE 1 LINCOLN NEW JERSEY 07036
 PHONE 732 333 0202 FAX 732 333 0202
 COMMERCIAL ENGINEERING AND SANITARY PLANNING
 ENVIRONMENTAL SERVICES CONSULTING SERVICES

MEMBERSHIP OF DOCUMENTS
 THIS DOCUMENT AND THE DESIGNS INCORPORATED HEREIN, AS AN INSTRUMENT OF PROFESSIONAL SERVICE, IS THE PROPERTY OF PROFESSIONAL DESIGN SERVICES, L.L.C. AND IS NOT TO BE USED IN WHOLE OR IN PART FOR ANY OTHER PROJECT WITHOUT THE WRITTEN AUTHORIZATION OF PROFESSIONAL DESIGN SERVICES, L.L.C.

PROFESSIONAL DESIGN SERVICES, L.L.C.
 PDS

AMENDED PRELIMINARY & FINAL MAJOR SITE PLAN
 FOR
BLOCK 92.111 - LOT 24.09
 TOWNSHIP OF BARNEGAT
 OCEAN COUNTY
 NEW JERSEY

SCALE: 1" = 50'
 DATE: AUGUST 24, 2020
 DESIGNED BY: LMB
 CHECKED BY: WAS
 JOB NUMBER: 16817
 SHEET: 7
 25



AMENDED PRELIMINARY & FINAL MAJOR SITE PLAN

FOR
BLOCK 92.111 - LOT 24.09

TOWNSHIP OF BARNEGAT
 OCEAN COUNTY
 NEW JERSEY

DATE: AUGUST 24, 2020
 DESIGNED BY: [Signature]
 CHECKED BY: WAS
 JOB NUMBER: 16617
 SHEET: 10 OF 25

WILLIAM A. STEVENS, P.E., P.P.
 PROFESSIONAL DESIGN SERVICES, L.L.C.
 126 AIRPORT ROAD SUITE 1, LANWOOD NEW JERSEY 07652
 PHONE: 201-992-7400 FAX: 201-992-7402
 EXHIBITION STATE BOARD OF P.E. & L.S.
 CERTIFICATE OF AUTHORIZATION NO. 200423848

NO.	DATE	DESCRIPTION



Symbol	Symbol	Symbol	Symbol	Symbol	Symbol
18	17	16	15	14	13
12	11	10	9	8	7
6	5	4	3	2	1

Legend for site plan symbols including various lighting fixture types and mounting heights.

Symbol	Symbol	Symbol	Symbol	Symbol	Symbol
18	17	16	15	14	13
12	11	10	9	8	7
6	5	4	3	2	1

Legend for site plan symbols including various lighting fixture types and mounting heights.

LIGHTING NOTES

- ALL LIGHTS SHOULD BE SET BACK AT LEAST 4' FROM THE DANCES OR PARKING TO AVOID CONFLICTS.
- CIRCLED LIGHT FIXTURES TO HAVE CUT-OFF HOUSE SHIELDS ATTACHED.

WLS LIGHTING SYSTEMS

XSPW SERIES LED SECURITY WALL PACK

Authorized Distributor: **CREE**

SPECIFICATIONS

- Lighting fixture with integrated LED lighting technology and high performance.
- Lighting fixture with integrated LED lighting technology and high performance.
- Lighting fixture with integrated LED lighting technology and high performance.

REQUIREMENTS & VOLUNTARY QUALIFICATIONS

- Lighting fixture with integrated LED lighting technology and high performance.
- Lighting fixture with integrated LED lighting technology and high performance.
- Lighting fixture with integrated LED lighting technology and high performance.

ELECTRICAL SYSTEM

- Lighting fixture with integrated LED lighting technology and high performance.
- Lighting fixture with integrated LED lighting technology and high performance.
- Lighting fixture with integrated LED lighting technology and high performance.

INSTALLATION & MATERIALS

- Lighting fixture with integrated LED lighting technology and high performance.
- Lighting fixture with integrated LED lighting technology and high performance.
- Lighting fixture with integrated LED lighting technology and high performance.

Dimensions

WLS LIGHTING SYSTEMS

OSO SERIES LED AREA

Authorized Distributor: **CREE**

SPECIFICATIONS

- Lighting fixture with integrated LED lighting technology and high performance.
- Lighting fixture with integrated LED lighting technology and high performance.
- Lighting fixture with integrated LED lighting technology and high performance.

REQUIREMENTS & VOLUNTARY QUALIFICATIONS

- Lighting fixture with integrated LED lighting technology and high performance.
- Lighting fixture with integrated LED lighting technology and high performance.
- Lighting fixture with integrated LED lighting technology and high performance.

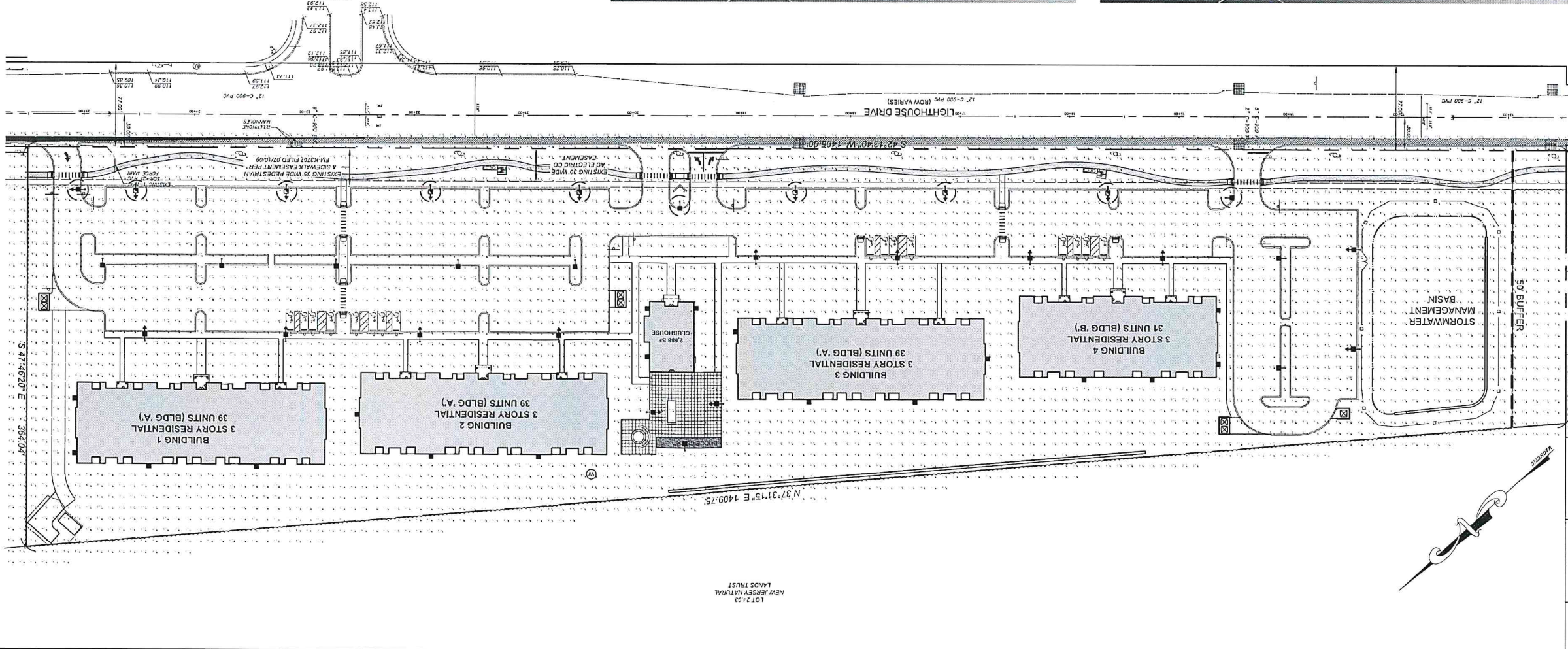
ELECTRICAL SYSTEM

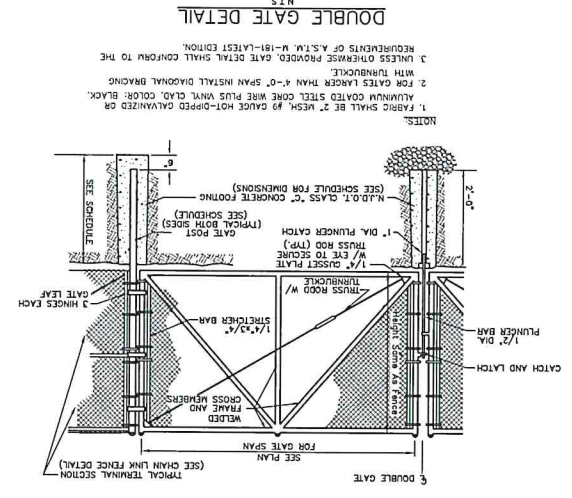
- Lighting fixture with integrated LED lighting technology and high performance.
- Lighting fixture with integrated LED lighting technology and high performance.
- Lighting fixture with integrated LED lighting technology and high performance.

INSTALLATION & MATERIALS

- Lighting fixture with integrated LED lighting technology and high performance.
- Lighting fixture with integrated LED lighting technology and high performance.
- Lighting fixture with integrated LED lighting technology and high performance.

Dimensions





CHAIN LINK FENCE SCHEDULES

DESCRIPTION	NOMINAL FENCE HEIGHT	MEMBER SCHEDULE	IN-LINE POST	TERMINAL AND CORNER POSTS	BRACE RAILS	FOOTING SCHEDULE	FOOTING DIAMETER (TOP)	FOOTING DIAMETER (BOTTOM)	IN-LINE POSTS	CORNER AND TERMINAL POSTS	FOOTING DIAMETER (TOP)	FOOTING DIAMETER (BOTTOM)	IN-LINE POSTS	CORNER AND TERMINAL POSTS
UNDER 4'	4' - 0"	2"	2-1/2"	3"	1-5/8"	2-1/2"	12"	12"	10"	12"	12"	12"	10"	12"
4' - 0" - 4' - 8"	4'-0"	2"	2-1/2"	3"	1-5/8"	2-1/2"	12"	12"	10"	12"	12"	12"	10"	12"
4' - 8" - 5' - 0"	4'-8"	2"	2-1/2"	3"	1-5/8"	2-1/2"	12"	12"	10"	12"	12"	12"	10"	12"
5' - 0" - 5' - 8"	5'-0"	2"	2-1/2"	3"	1-5/8"	2-1/2"	12"	12"	10"	12"	12"	12"	10"	12"
5' - 8" - 6' - 0"	5'-8"	2"	2-1/2"	3"	1-5/8"	2-1/2"	12"	12"	10"	12"	12"	12"	10"	12"
6' - 0" - 6' - 8"	6'-0"	2"	2-1/2"	3"	1-5/8"	2-1/2"	12"	12"	10"	12"	12"	12"	10"	12"
6' - 8" - 7' - 0"	6'-8"	2"	2-1/2"	3"	1-5/8"	2-1/2"	12"	12"	10"	12"	12"	12"	10"	12"
7' - 0" - 7' - 8"	7'-0"	2"	2-1/2"	3"	1-5/8"	2-1/2"	12"	12"	10"	12"	12"	12"	10"	12"
7' - 8" - 8' - 0"	7'-8"	2"	2-1/2"	3"	1-5/8"	2-1/2"	12"	12"	10"	12"	12"	12"	10"	12"
8' - 0" - 8' - 8"	8'-0"	2"	2-1/2"	3"	1-5/8"	2-1/2"	12"	12"	10"	12"	12"	12"	10"	12"
8' - 8" - 9' - 0"	8'-8"	2"	2-1/2"	3"	1-5/8"	2-1/2"	12"	12"	10"	12"	12"	12"	10"	12"
9' - 0" - 9' - 8"	9'-0"	2"	2-1/2"	3"	1-5/8"	2-1/2"	12"	12"	10"	12"	12"	12"	10"	12"
9' - 8" - 10' - 0"	9'-8"	2"	2-1/2"	3"	1-5/8"	2-1/2"	12"	12"	10"	12"	12"	12"	10"	12"
10' - 0" - 10' - 8"	10'-0"	2"	2-1/2"	3"	1-5/8"	2-1/2"	12"	12"	10"	12"	12"	12"	10"	12"
10' - 8" - 11' - 0"	10'-8"	2"	2-1/2"	3"	1-5/8"	2-1/2"	12"	12"	10"	12"	12"	12"	10"	12"
11' - 0" - 11' - 8"	11'-0"	2"	2-1/2"	3"	1-5/8"	2-1/2"	12"	12"	10"	12"	12"	12"	10"	12"
11' - 8" - 12' - 0"	11'-8"	2"	2-1/2"	3"	1-5/8"	2-1/2"	12"	12"	10"	12"	12"	12"	10"	12"
12' - 0" - 12' - 8"	12'-0"	2"	2-1/2"	3"	1-5/8"	2-1/2"	12"	12"	10"	12"	12"	12"	10"	12"
12' - 8" - 13' - 0"	12'-8"	2"	2-1/2"	3"	1-5/8"	2-1/2"	12"	12"	10"	12"	12"	12"	10"	12"
13' - 0" - 13' - 8"	13'-0"	2"	2-1/2"	3"	1-5/8"	2-1/2"	12"	12"	10"	12"	12"	12"	10"	12"
13' - 8" - 14' - 0"	13'-8"	2"	2-1/2"	3"	1-5/8"	2-1/2"	12"	12"	10"	12"	12"	12"	10"	12"
14' - 0" - 14' - 8"	14'-0"	2"	2-1/2"	3"	1-5/8"	2-1/2"	12"	12"	10"	12"	12"	12"	10"	12"
14' - 8" - 15' - 0"	14'-8"	2"	2-1/2"	3"	1-5/8"	2-1/2"	12"	12"	10"	12"	12"	12"	10"	12"
15' - 0" - 15' - 8"	15'-0"	2"	2-1/2"	3"	1-5/8"	2-1/2"	12"	12"	10"	12"	12"	12"	10"	12"
15' - 8" - 16' - 0"	15'-8"	2"	2-1/2"	3"	1-5/8"	2-1/2"	12"	12"	10"	12"	12"	12"	10"	12"
16' - 0" - 16' - 8"	16'-0"	2"	2-1/2"	3"	1-5/8"	2-1/2"	12"	12"	10"	12"	12"	12"	10"	12"
16' - 8" - 17' - 0"	16'-8"	2"	2-1/2"	3"	1-5/8"	2-1/2"	12"	12"	10"	12"	12"	12"	10"	12"
17' - 0" - 17' - 8"	17'-0"	2"	2-1/2"	3"	1-5/8"	2-1/2"	12"	12"	10"	12"	12"	12"	10"	12"
17' - 8" - 18' - 0"	17'-8"	2"	2-1/2"	3"	1-5/8"	2-1/2"	12"	12"	10"	12"	12"	12"	10"	12"
18' - 0" - 18' - 8"	18'-0"	2"	2-1/2"	3"	1-5/8"	2-1/2"	12"	12"	10"	12"	12"	12"	10"	12"
18' - 8" - 19' - 0"	18'-8"	2"	2-1/2"	3"	1-5/8"	2-1/2"	12"	12"	10"	12"	12"	12"	10"	12"
19' - 0" - 19' - 8"	19'-0"	2"	2-1/2"	3"	1-5/8"	2-1/2"	12"	12"	10"	12"	12"	12"	10"	12"
19' - 8" - 20' - 0"	19'-8"	2"	2-1/2"	3"	1-5/8"	2-1/2"	12"	12"	10"	12"	12"	12"	10"	12"
20' - 0" - 20' - 8"	20'-0"	2"	2-1/2"	3"	1-5/8"	2-1/2"	12"	12"	10"	12"	12"	12"	10"	12"
20' - 8" - 21' - 0"	20'-8"	2"	2-1/2"	3"	1-5/8"	2-1/2"	12"	12"	10"	12"	12"	12"	10"	12"
21' - 0" - 21' - 8"	21'-0"	2"	2-1/2"	3"	1-5/8"	2-1/2"	12"	12"	10"	12"	12"	12"	10"	12"
21' - 8" - 22' - 0"	21'-8"	2"	2-1/2"	3"	1-5/8"	2-1/2"	12"	12"	10"	12"	12"	12"	10"	12"
22' - 0" - 22' - 8"	22'-0"	2"	2-1/2"	3"	1-5/8"	2-1/2"	12"	12"	10"	12"	12"	12"	10"	12"
22' - 8" - 23' - 0"	22'-8"	2"	2-1/2"	3"	1-5/8"	2-1/2"	12"	12"	10"	12"	12"	12"	10"	12"
23' - 0" - 23' - 8"	23'-0"	2"	2-1/2"	3"	1-5/8"	2-1/2"	12"	12"	10"	12"	12"	12"	10"	12"
23' - 8" - 24' - 0"	23'-8"	2"	2-1/2"	3"	1-5/8"	2-1/2"	12"	12"	10"	12"	12"	12"	10"	12"
24' - 0" - 24' - 8"	24'-0"	2"	2-1/2"	3"	1-5/8"	2-1/2"	12"	12"	10"	12"	12"	12"	10"	12"
24' - 8" - 25' - 0"	24'-8"	2"	2-1/2"	3"	1-5/8"	2-1/2"	12"	12"	10"	12"	12"	12"	10"	12"
25' - 0" - 25' - 8"	25'-0"	2"	2-1/2"	3"	1-5/8"	2-1/2"	12"	12"	10"	12"	12"	12"	10"	12"
25' - 8" - 26' - 0"	25'-8"	2"	2-1/2"	3"	1-5/8"	2-1/2"	12"	12"	10"	12"	12"	12"	10"	12"
26' - 0" - 26' - 8"	26'-0"	2"	2-1/2"	3"	1-5/8"	2-1/2"	12"	12"	10"	12"	12"	12"	10"	12"
26' - 8" - 27' - 0"	26'-8"	2"	2-1/2"	3"	1-5/8"	2-1/2"	12"	12"	10"	12"	12"	12"	10"	12"
27' - 0" - 27' - 8"	27'-0"	2"	2-1/2"	3"	1-5/8"	2-1/2"	12"	12"	10"	12"	12"	12"	10"	12"
27' - 8" - 28' - 0"	27'-8"	2"	2-1/2"	3"	1-5/8"	2-1/2"	12"	12"	10"	12"	12"	12"	10"	12"
28' - 0" - 28' - 8"	28'-0"	2"	2-1/2"	3"	1-5/8"	2-1/2"	12"	12"	10"	12"	12"	12"	10"	12"
28' - 8" - 29' - 0"	28'-8"	2"	2-1/2"	3"	1-5/8"	2-1/2"	12"	12"	10"	12"	12"	12"	10"	12"
29' - 0" - 29' - 8"	29'-0"	2"	2-1/2"	3"	1-5/8"	2-1/2"	12"	12"	10"	12"	12"	12"	10"	12"
29' - 8" - 30' - 0"	29'-8"	2"	2-1/2"	3"	1-5/8"	2-1/2"	12"	12"	10"	12"	12"	12"	10"	12"
30' - 0" - 30' - 8"	30'-0"	2"	2-1/2"	3"	1-5/8"	2-1/2"	12"	12"	10"	12"	12"	12"	10"	12"
30' - 8" - 31' - 0"	30'-8"	2"	2-1/2"	3"	1-5/8"	2-1/2"	12"	12"	10"	12"	12"	12"	10"	12"
31' - 0" - 31' - 8"	31'-0"	2"	2-1/2"	3"	1-5/8"	2-1/2"	12"	12"	10"	12"	12"	12"	10"	12"
31' - 8" - 32' - 0"	31'-8"	2"	2-1/2"	3"	1-5/8"	2-1/2"	12"	12"	10"	12"	12"	12"	10"	12"
32' - 0" - 32' - 8"	32'-0"	2"	2-1/2"	3"	1-5/8"	2-1/2"	12"	12"	10"	12"	12"	12"	10"	12"
32' - 8" - 33' - 0"	32'-8"	2"	2-1/2"	3"	1-5/8"	2-1/2"	12"	12"	10"	12"	12"	12"	10"	12"
33' - 0" - 33' - 8"	33'-0"	2"	2-1/2"	3"	1-5/8"	2-1/2"	12"	12"	10"	12"	12"	12"	10"	12"
33' - 8" - 34' - 0"	33'-8"	2"	2-1/2"	3"	1-5/8"	2-1/2"	12"	12"	10"	12"	12"	12"	10"	12"
34' - 0" - 34' - 8"	34'-0"	2"	2-1/2"	3"	1-5/8"	2-1/2"	12"	12"	10"	12"	12"	12"	10"	12"
34' - 8" - 35' - 0"	34'-8"	2"	2-1/2"	3"	1-5/8"	2-1/2"	12"	12"	10"	12"	12"	12"	10"	12"
35' - 0" - 35' - 8"	35'-0"	2"	2-1/2"	3"	1-5/8"	2-1/2"	12"	12"	10"	12"	12"	12"	10"	12"
35' - 8" - 36' - 0"	35'-8"	2"	2-1/2"	3"	1-5/8"	2-1/2"	12"	12"	10"	12"	12"	12"	10"	12"
36' - 0" - 36' - 8"	36'-0"	2"	2-1/2"	3"	1-5/8"	2-1/2"	12"	12"	10"	12"	12"	12"	10"	12"
36' - 8" - 37' - 0"	36'-8"	2"	2-1/2"	3"	1-5/8"	2-1/2"	12"	12"	10"	12"	12"	12"	10"	12"
37' - 0" - 37' - 8"	37'-0"	2"	2-1/2"	3"	1-5/8"	2-1/2"	12"	12"	10"	12"	12"	12"	10"	12"
37' - 8" - 38' - 0"	37'-8"	2"	2-1/2"	3"	1-5/8"	2-1/2"	12"	12"	10"	12"	12"	12"	10"	12"
38' - 0" - 38' - 8"	38'-0"	2"	2-1/2"	3"	1-5/8"	2-1/2"	12"	12"	10"	12"	12"	12"	10"	12"
38' - 8" - 39' - 0"	38'-8"	2"	2-1/2"	3"	1-5/8"	2-1/2"	12"	12"	10"	12"	12"	12"	10"	12"
39' - 0" - 39' - 8"	39'-0"	2"	2-1/2"	3"	1-5/8"	2-1/2"	12"	12"	10"	12"	12"	12"	10"	12"
39' - 8" - 40' - 0"	39'-8"	2"	2-1/2"	3"	1-5/8"	2-1/2"	12"	12"	10"	12"	12"	12"	10"	12"
40' - 0" - 40' - 8"	40'-0"	2"	2-1/2"	3"	1-5/8"	2-1/2"	12"	12"	10"	12"	12"	12"	10"	12"
40' - 8" - 41' - 0"	40'-8"	2"	2-1/2"	3"	1-5/8"	2-1/2"	12"	12"	10"	12"	12"	12"	10"	12"
41' - 0" - 41' - 8"	41'-0"	2"	2-1/2"	3"	1-5/8"	2-1/2"	12"	12"	10"	12"	12"	12"	10"	12"
41' - 8" - 42' - 0"	41'-8"	2"	2-1/2"	3"	1-5/8"	2-1/2"	12"	12"	10"	12"	12"	12"	10"	12"
42' - 0" - 42' - 8"	42'-0"	2"	2-1/2"	3"	1-5/8"	2-1/2"	12"	12"	10"	12"	12"	12"	10"	12"
42' - 8" - 43' - 0"	42'-8"	2"	2-1/2"	3"	1-5/8"	2-1/2"	12"	12"	10"	12"	12"	12"	10"	12"
43' - 0" - 43' - 8"	43'-0"	2"	2-1/2"	3"	1-5/8"	2-1/2"	12"	12"	10"	12"	12"	12"		

