

**General Notes for Pre-Application Conference**

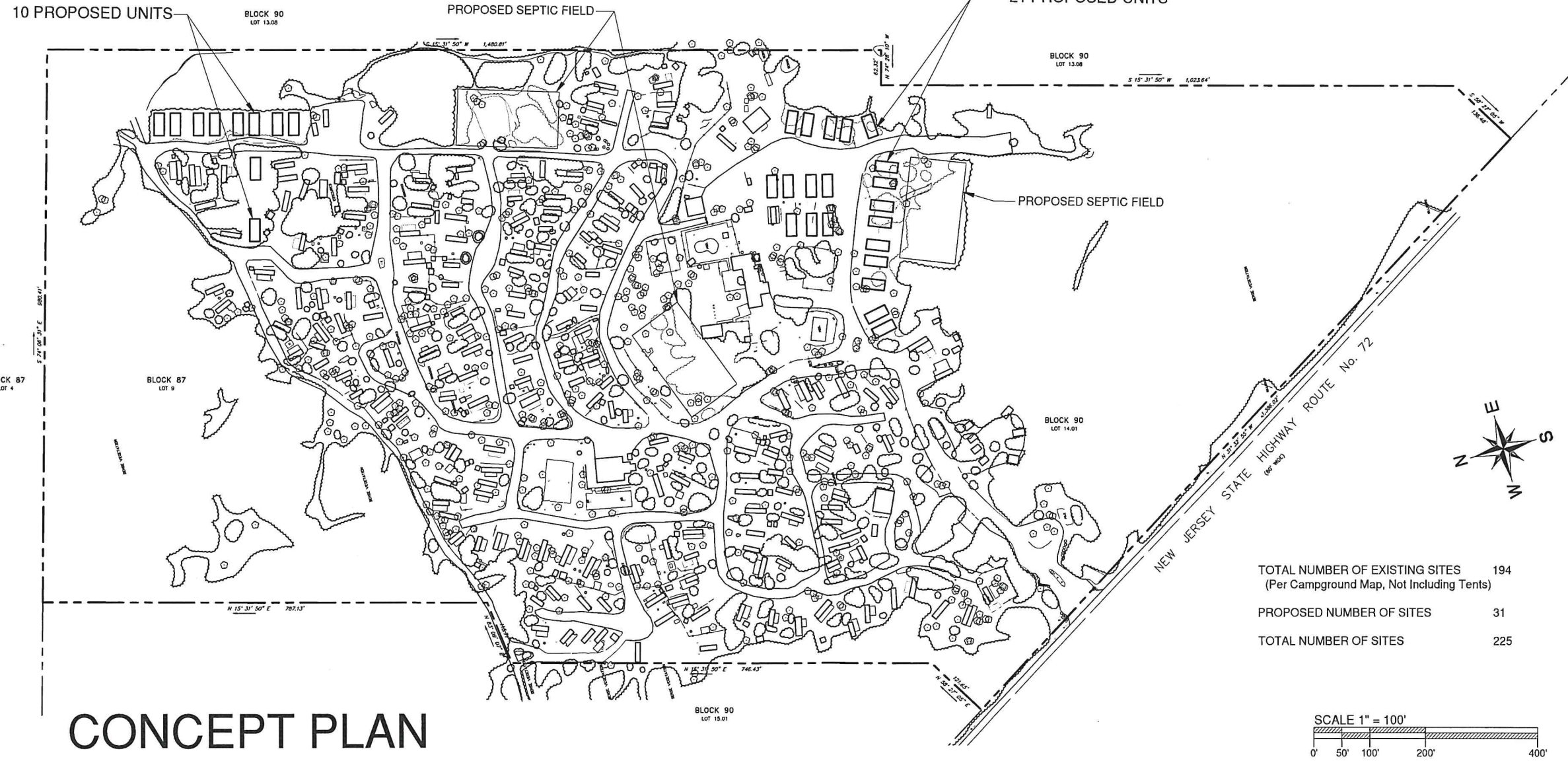
1. Owner/Applicant:  
Long Beach Campground  
NHC-NJ103, LLC  
27777 Franklin Road, Suite 200  
Southfield, MI 48034  
Attn: Westley Paxton
2. The project site is known as Block 90, Lot 14.01 as shown on the Township of Barneгат Tax Map, Plate No. 18. It is 42.7± acres. It contains a 194 unit campground.
3. It is the intent of the applicant to expand the campground to 225 total units. A series of septic systems are also to be installed to collect wastewater from the entire property.
4. There are no freshwater wetlands on the property.
5. Approval will be required from the following agencies:  
NJDEP-Treatment Works  
Pinelands Commission  
Barneгат Township Land Use Board  
Ocean County Planning Board  
Ocean County Soil Conservation District

**EDA**  
Engineering Design Associates, P.A.  
Engineers Environmental Planners Landscape Architects  
CAMBRIDGE PROFESSIONAL OFFICES  
5 Cambridge Drive Ocean View New Jersey 08230  
(609) 426-1100  
CERTIFICATE OF AUTHORIZATION #GC02707030

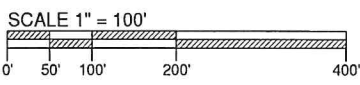
**OVERALL PLAN**  
BLOCK 90, LOT 14.01  
TOWNSHIP OF BARNEGAT  
OCEAN COUNTY, NEW JERSEY

**VINCENT C. ORLANDO**  
PROFESSIONAL ENGINEER  
N.J.P.E. LIC. #92498

IF THIS PLAN OR DOCUMENT DOES NOT CONTAIN A RAISED SEAL IMPRESSION BEARING THE NAME AND REGISTRATION NUMBER OF THE ABOVE SIGNED PROFESSIONAL, IT MAY NOT BE AN AUTHORIZED COPY OF THE ORIGINAL DOCUMENT AND MAY HAVE BEEN ALTERED. REPRODUCTION OR FURTHER DISSEMINATION OF THE CONTENTS IN WHOLE OR IN PART REQUIRES PERMISSION IN WRITING FROM ENGINEERING DESIGN ASSOCIATES, P.A.



TOTAL NUMBER OF EXISTING SITES (Per Campground Map, Not Including Tents)	194
PROPOSED NUMBER OF SITES	31
TOTAL NUMBER OF SITES	225



REVISION	DATE	BY
Rev. Layout	5/28/20	MJH
Rev. Layout	2/24/20	MJH



DATE: 6/27/19	DRAWN BY: MJH
SCALE: 1"=100'	CHECKED BY: VCO
PROJECT #: 7684	SHEET: 1 OF 1