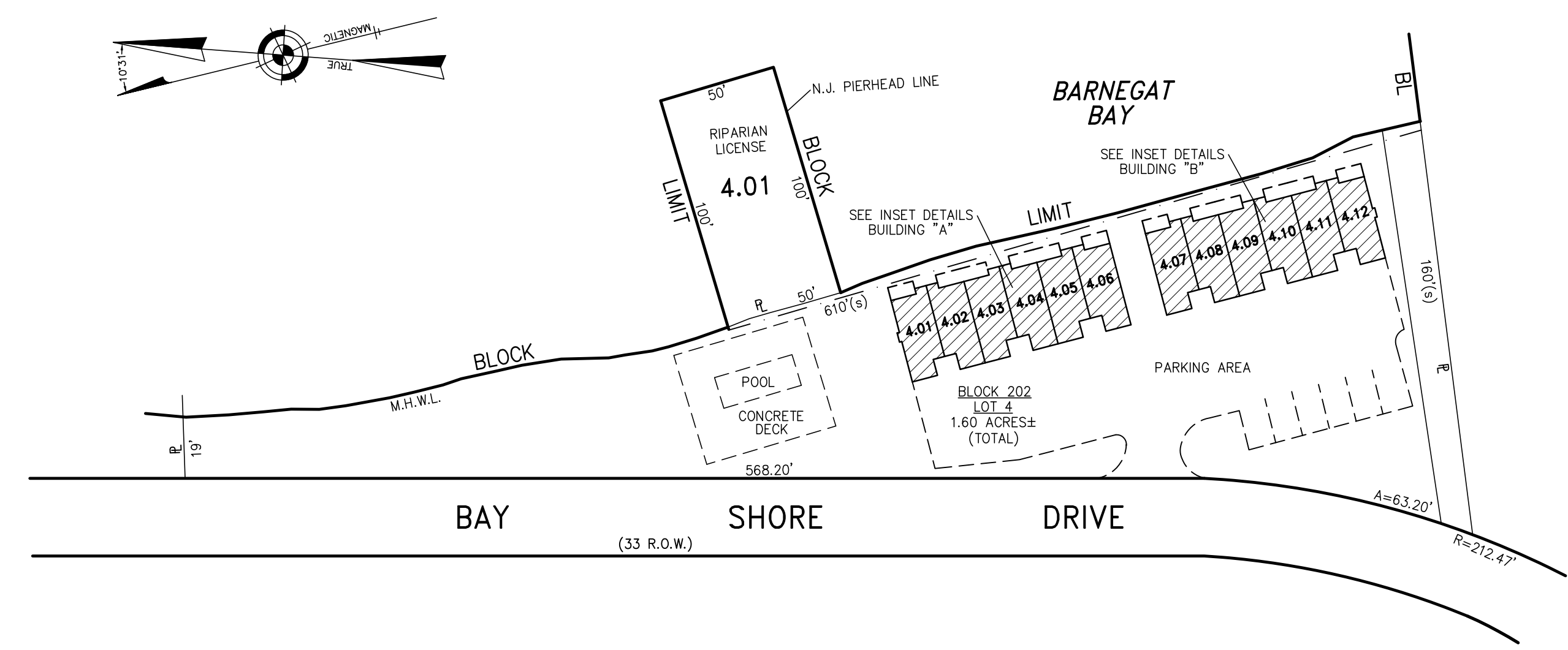
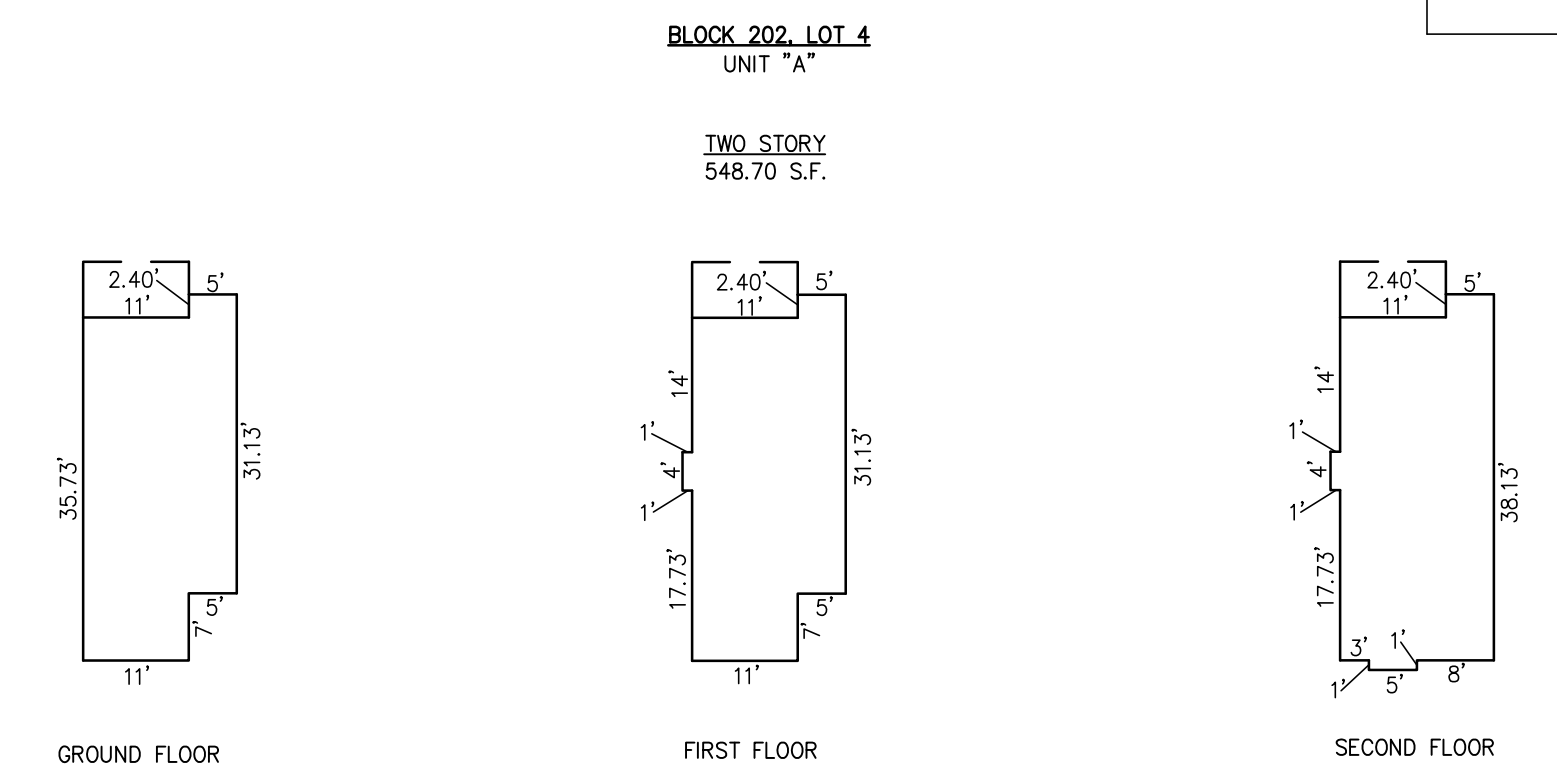


REVISIONS		
6-20-2007	CRAIG F. REMINGTON	23924

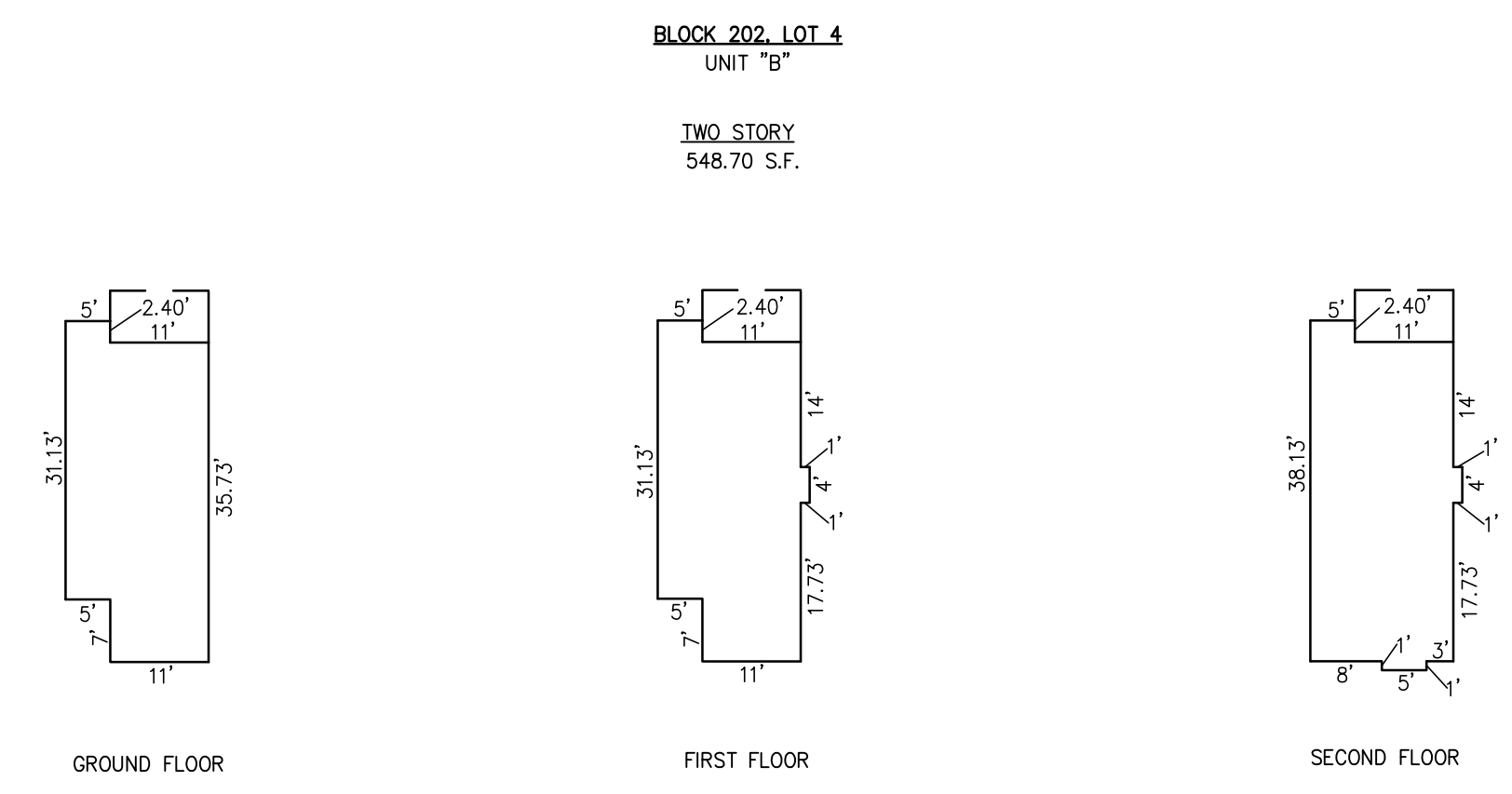


**PLAN**  
SCALE: 1"=50'

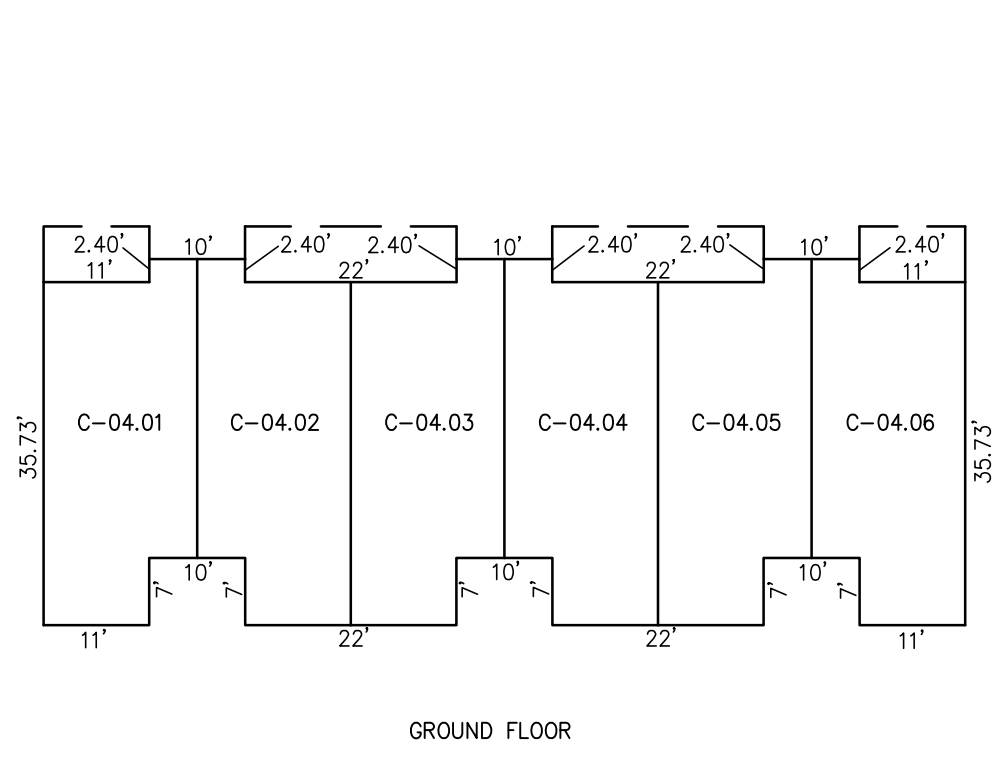
**BLOCK 202, LOT 4**  
**BAYSIDE AT BARNEGAT**  
**1605 BAY AVENUE**  
**INSET "E"**



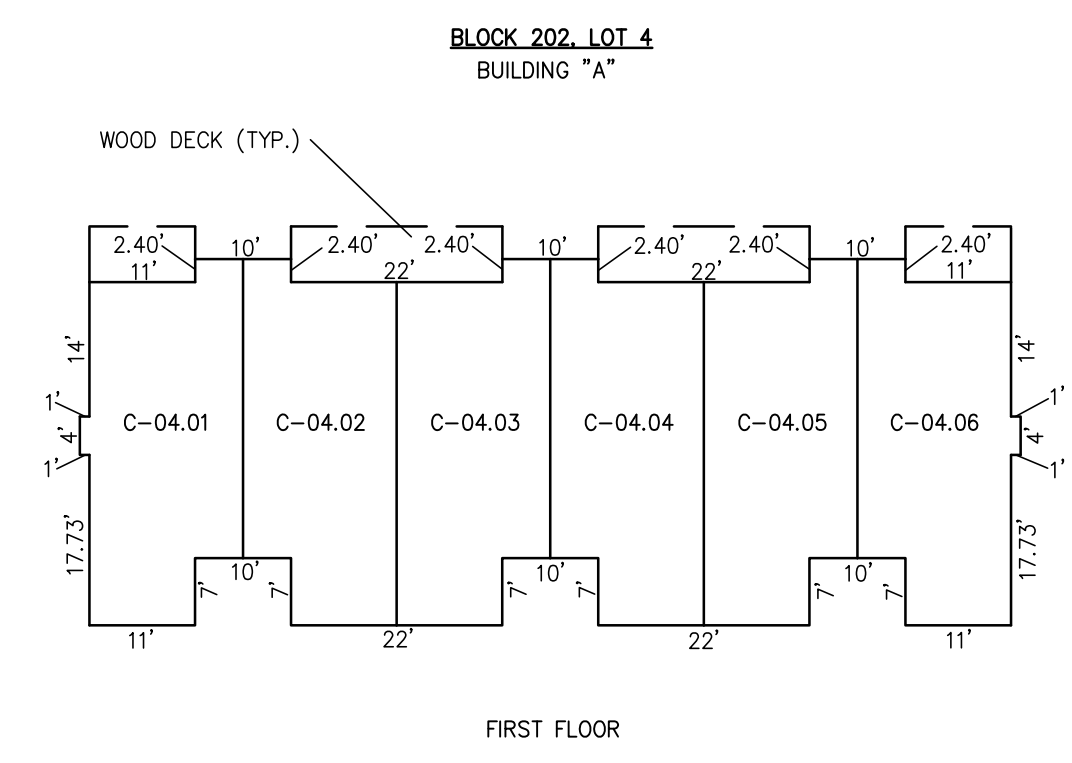
NOTE: DIMENSIONS AND SQUARE FOOTAGE ARE TYPICAL FOR SIMILAR UNITS



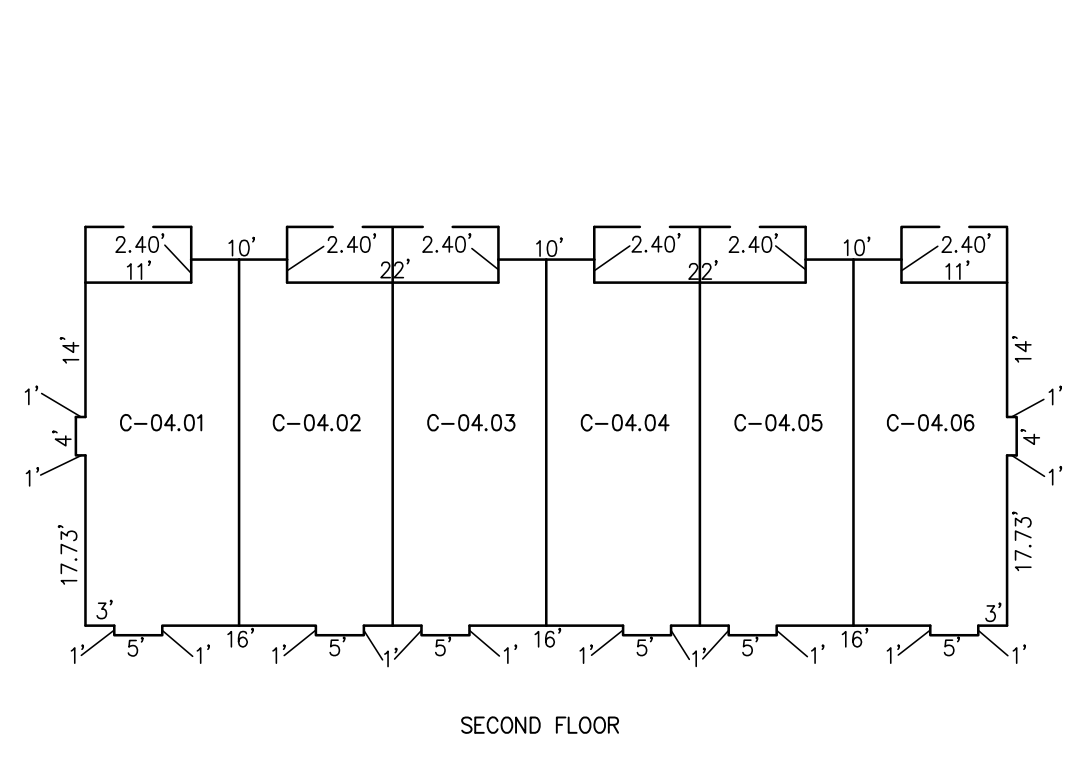
NOTE: DIMENSIONS AND SQUARE FOOTAGE ARE TYPICAL FOR SIMILAR UNITS



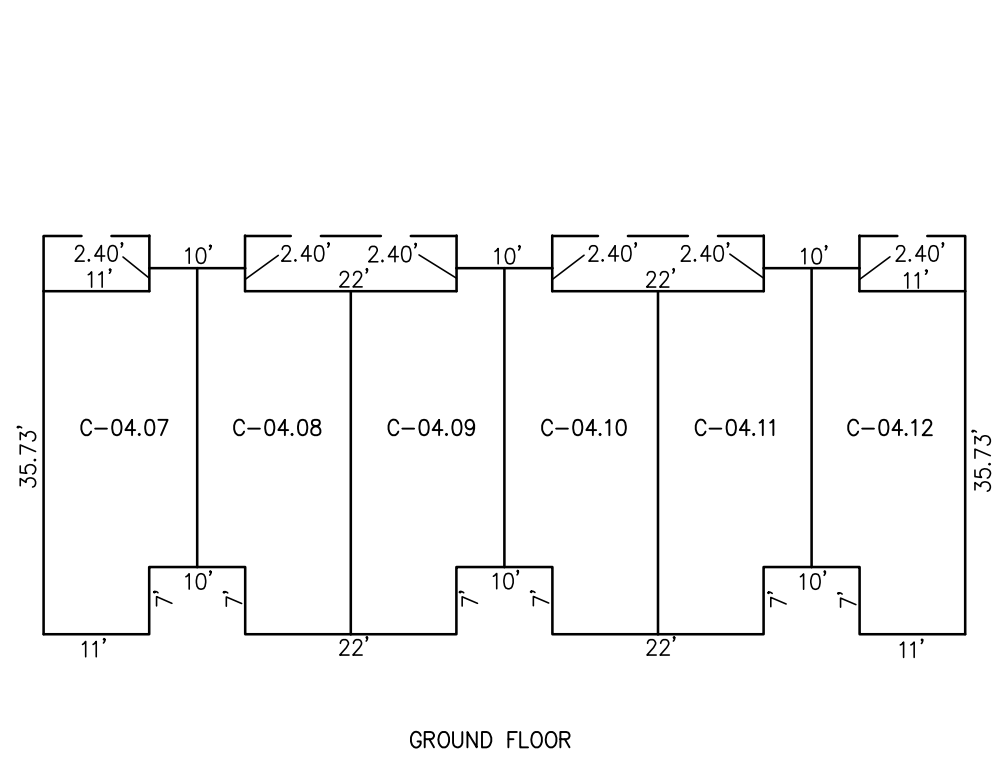
GROUND FLOOR



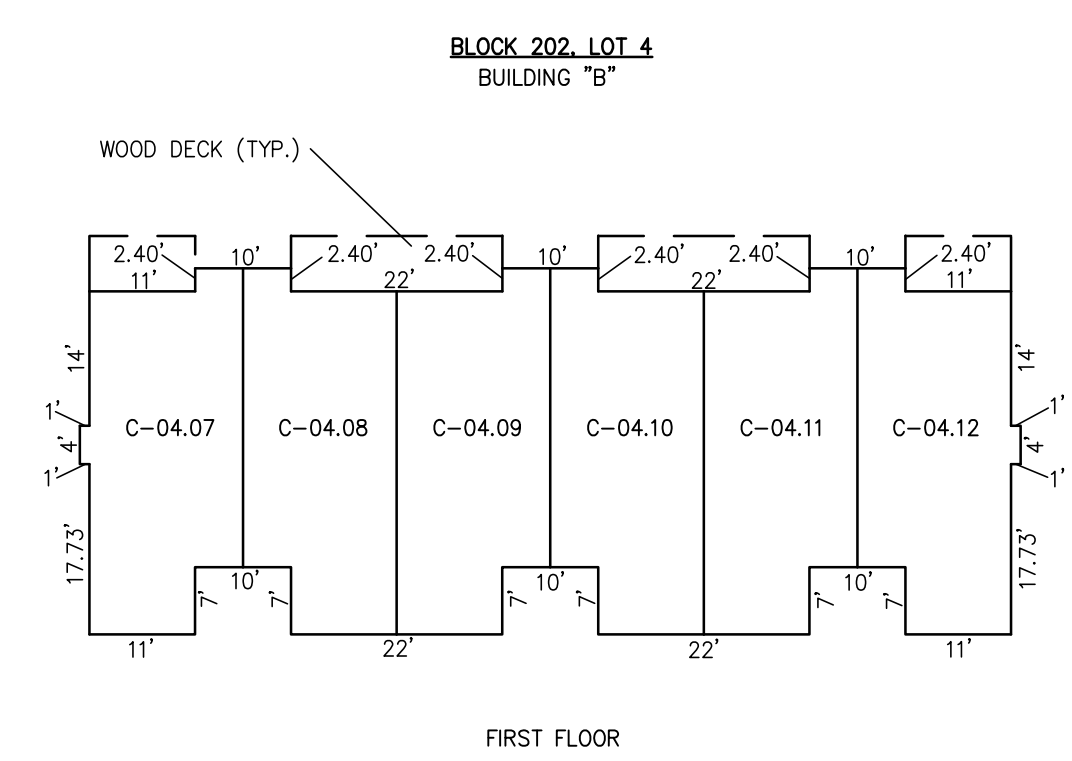
FIRST FLOOR



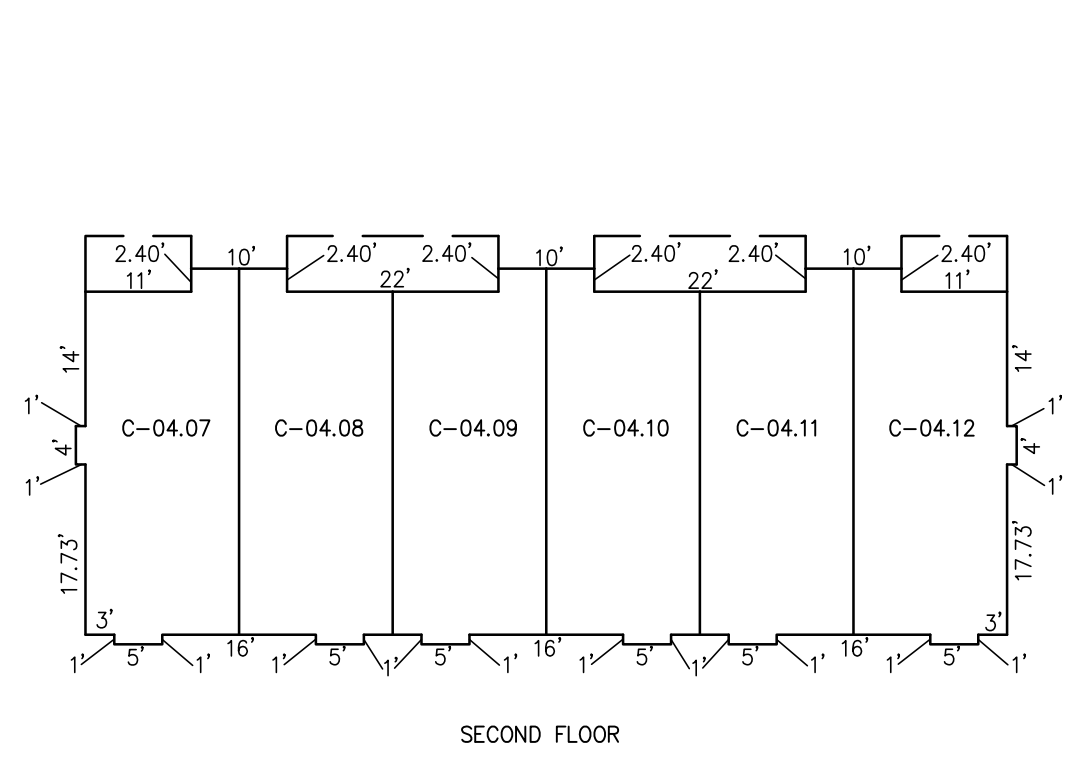
SECOND FLOOR



GROUND FLOOR



FIRST FLOOR



SECOND FLOOR

**DETAILS**  
SCALE: 1"=20'

**DETAILS**  
SCALE: 1"=20'

CONDOMINIUM DETAILS AND DIMENSIONS  
BLOCK 202, LOT 4  
SEE PLATE I24

**TAX MAP**  
**TOWNSHIP OF BARNEGAT**

OCEAN COUNTY NEW JERSEY  
SCALE: NOTED DATE: 5-19-2005  
**CRAIG F. REMINGTON LAND SURVEYOR LIC. NO. 23924**

"THIS TAX MAP PLATE HAS BEEN DIGITALLY DRAWN USING COMPUTER-AIDED DRAFTING/DESIGN (CADD) AND COORDINATE GEOMETRY (COGO). IT IS BASED ON THE ORIGINAL DIGITALLY DRAWN TAX MAP PLATE BEARING THE OFFICIAL NEW JERSEY DIVISION OF TAXATION APPROVAL STAMP WITH APPROVAL DATE (7-31-2006) SERIAL NUMBER (896) AND SIGNATURES OF SIGNERS' JAMES J. COLL, CHIEF, LOCAL ASSESSMENT, SANTO C. DIDONATO, SUPERVISING FIELD REPRESENTATIVE. THIS TAX MAP PLATE HAS BEEN DIGITALLY UPDATED TO REFLECT CONDITIONS AS OF 6-20-07. THE ORIGINAL DIGITALLY DRAWN TAX MAP PLATE WITH THE OFFICIAL APPROVAL STAMP IS ON FILE WITH THE TOWNSHIP OF BARNEGAT ENGINEER."

**REMINGTON, VERNICK & VENA ENGINEERS**  
24 GA 28003300  
9 ALLEN STREET, TOMS RIVER, N.J. 08753  
(732) 286-9220, FAX (732) 505-8416  
WEB SITE ADDRESS: WWW.RVVE.COM