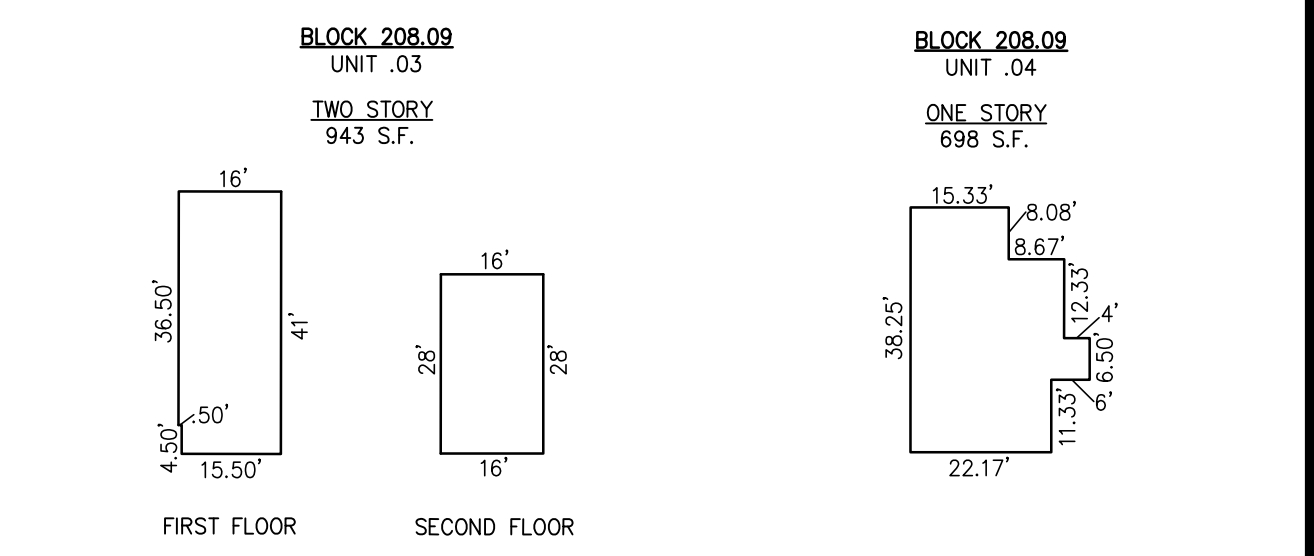


- LOTS C-1.01, C-2.01, C-3.01, C-4.01, C-5.01  
 C-6.01, C-7.01, C-8.01, C-9.01, C-10.01  
 C-11.01, C-12.01, C-13.01, C-14.01, C-15.01  
 C-16.01, C-17.01, C-18.01, C-19.01, C-20.01  
 C-21.01, C-22.01, C-23.01, C-24.01, C-25.01  
 C-26.01, C-27.01, C-28.01, C-29.01, C-30.01  
 C-31.01, C-32.01, C-33.01, C-34.01, C-35.01  
 C-36.01, C-37.01, C-38.01, C-39.01, C-40.01  
 C-41.01, C-42.01, C-43.01, C-44.01, C-45.01
- LOTS C-1.02, C-2.02, C-3.02, C-4.02, C-5.02  
 C-6.02, C-7.02, C-8.02, C-9.02, C-10.02  
 C-11.02, C-12.02, C-13.02, C-14.02, C-15.02  
 C-16.02, C-17.02, C-18.02, C-19.02, C-20.02  
 C-21.02, C-22.02, C-23.02, C-24.02, C-25.02  
 C-26.02, C-27.02, C-28.02, C-29.02, C-30.02  
 C-31.02, C-32.02, C-33.02, C-34.02, C-35.02  
 C-36.02, C-37.02, C-38.02, C-39.02, C-40.02  
 C-41.02, C-42.02, C-43.02, C-44.02, C-45.02

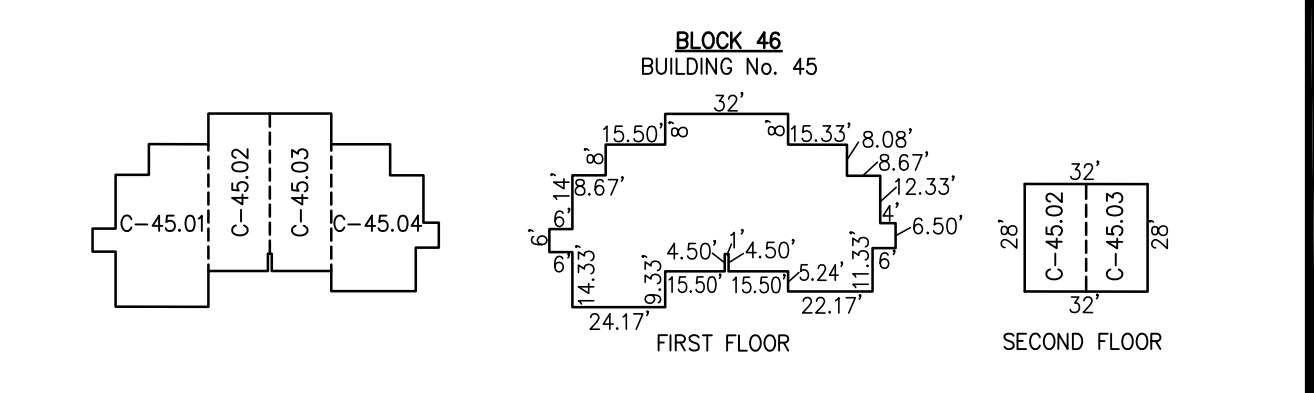


- LOTS C-1.03, C-2.03, C-3.03, C-4.03, C-5.03  
 C-6.03, C-7.03, C-8.03, C-9.03, C-10.03  
 C-11.03, C-12.03, C-13.03, C-14.03, C-15.03  
 C-16.03, C-17.03, C-18.03, C-19.03, C-20.03  
 C-21.03, C-22.03, C-23.03, C-24.03, C-25.03  
 C-26.03, C-27.03, C-28.03, C-29.03, C-30.03  
 C-31.03, C-32.03, C-33.03, C-34.03, C-35.03  
 C-36.03, C-37.03, C-38.03, C-39.03, C-40.03  
 C-41.03, C-42.03, C-43.03, C-44.03, C-45.03
- LOTS C-1.04, C-2.04, C-3.04, C-4.04, C-5.04  
 C-6.04, C-7.04, C-8.04, C-9.04, C-10.04  
 C-11.04, C-12.04, C-13.04, C-14.04, C-15.04  
 C-16.04, C-17.04, C-18.04, C-19.04, C-20.04  
 C-21.04, C-22.04, C-23.04, C-24.04, C-25.04  
 C-26.04, C-27.04, C-28.04, C-29.04, C-30.04  
 C-31.04, C-32.04, C-33.04, C-34.04, C-35.04  
 C-36.04, C-37.04, C-38.04, C-39.04, C-40.04  
 C-41.04, C-42.04, C-43.04, C-44.04, C-45.04

NOTE: DIMENSIONS AND SQUARE FOOTAGE ARE TYPICAL FOR SIMILAR UNITS

**DETAILS**

SCALE: 1"=30"



**CONDOMINIUM DETAILS AND DIMENSIONS  
 BLOCK 208.09, LOT 46  
 SEE PLATE I04**

"THIS TAX MAP PLATE HAS BEEN DIGITALLY DRAWN USING COMPUTER-AIDED DRAFTING/DESIGN (CAD) AND COORDINATE GEOMETRY (COGO). IT IS BASED ON THE ORIGINAL DIGITALLY DRAWN TAX MAP PLATE BEARING THE OFFICIAL NEW JERSEY DIVISION OF TAXATION APPROVAL STAMP WITH APPROVAL DATE (7-31-2006) SERIAL NUMBER (896) AND SIGNATURES OF SIGNERS' JAMES J. COLL, CHIEF, LOCAL ASSESSMENT SANTO C. DIDONATO, SUPERVISING FIELD REPRESENTATIVE. THIS TAX MAP PLATE HAS BEEN DIGITALLY UPDATED TO REFLECT CONDITIONS AS OF 6-20-07. THE ORIGINAL DIGITALLY DRAWN TAX MAP PLATE WITH THE OFFICIAL APPROVAL STAMP IS ON FILE WITH THE TOWNSHIP OF BARNEGAT ENGINEER."

**TAX MAP  
 TOWNSHIP OF BARNEGAT**

OCEAN COUNTY NEW JERSEY  
 SCALE: 1" = 50' DATE: 5-24-2005  
**CRAIG F. REMINGTON LAND SURVEYOR LIC. NO. 23924**  
 24 GA 28003300  
**REMINGTON, VERNICK & VENA ENGINEERS**  
 9 ALLEN STREET, TOMS RIVER, NJ 08753  
 (732) 206-9220, FAX (732) 505-9416  
 WEB SITE ADDRESS: WWW.RVVE.COM

REVISIONS		
6-20-2007	CRAIG F. REMINGTON	23924

**PLAN**  
 SCALE: 1"=50"

**BLOCK 208.09, LOT 46  
 CROSSWINDS CONDOMINIUM  
 184 BAY SHORE DRIVE  
 INSET "D"**