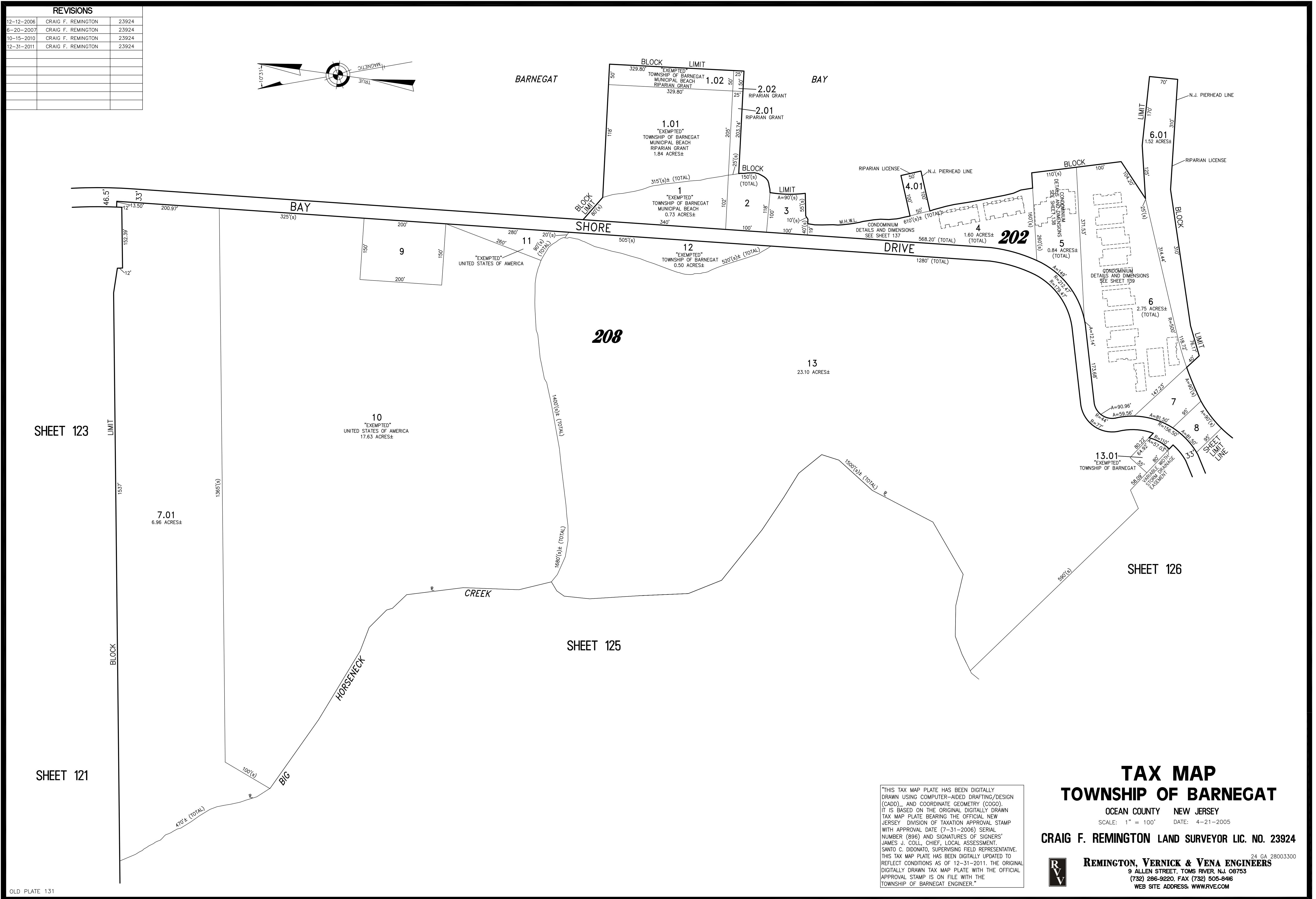
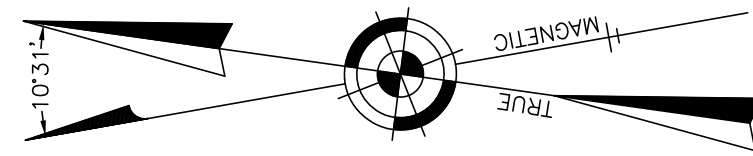


REVISIONS			
12-12-2006	CRAIG F. REMINGTON	23924	
6-20-2007	CRAIG F. REMINGTON	23924	
10-15-2010	CRAIG F. REMINGTON	23924	
12-31-2011	CRAIG F. REMINGTON	23924	



SHEET 123

SHEET 121

SHEET 125

SHEET 126

"THIS TAX MAP PLATE HAS BEEN DIGITALLY DRAWN USING COMPUTER-AIDED DRAFTING/DESIGN (CADD) AND COORDINATE GEOMETRY (COGO). IT IS BASED ON THE ORIGINAL DIGITALLY DRAWN TAX MAP PLATE BEARING THE OFFICIAL NEW JERSEY DIVISION OF TAXATION APPROVAL STAMP WITH APPROVAL DATE (7-31-2006) SERIAL NUMBER (896) AND SIGNATURES OF SIGNERS' JAMES J. COLL, CHIEF, LOCAL ASSESSMENT, SANTO C. DIDONATO, SUPERVISING FIELD REPRESENTATIVE. THIS TAX MAP PLATE HAS BEEN DIGITALLY UPDATED TO REFLECT CONDITIONS AS OF 12-31-2011. THE ORIGINAL DIGITALLY DRAWN TAX MAP PLATE WITH THE OFFICIAL APPROVAL STAMP IS ON FILE WITH THE TOWNSHIP OF BARNEGAT ENGINEER."

TAX MAP TOWNSHIP OF BARNEGAT

OCEAN COUNTY NEW JERSEY
 SCALE: 1" = 100' DATE: 4-21-2005
CRAIG F. REMINGTON LAND SURVEYOR LIC. NO. 23924



REMINGTON, VERNICK & VENA ENGINEERS
 9 ALLEN STREET, TOMS RIVER, N.J. 08753
 (732) 286-9220, FAX (732) 505-8416
 WEB SITE ADDRESS: WWW.RVVE.COM