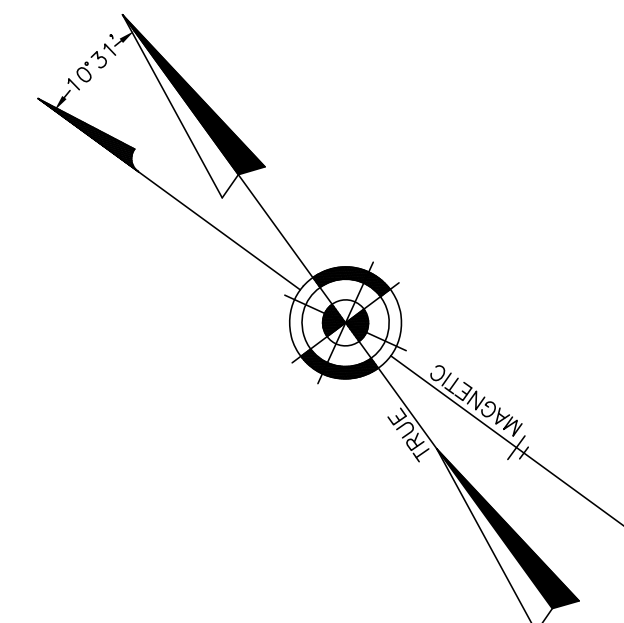
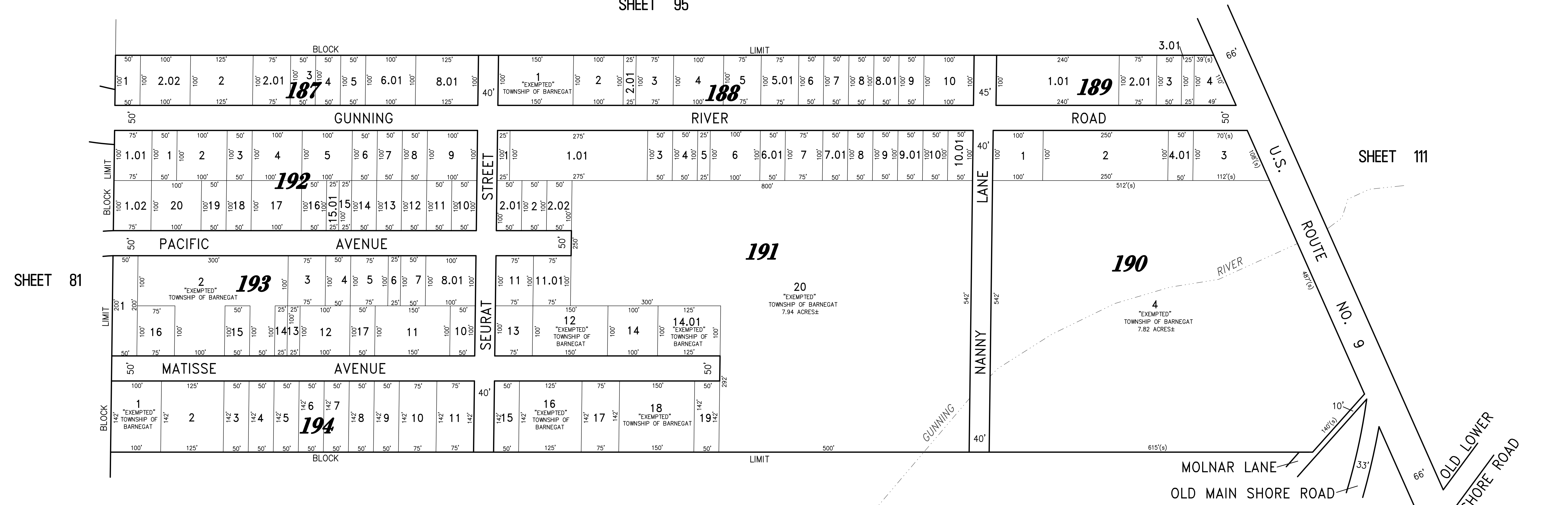


REVISIONS		
6-20-2007	CRAIG F. REMINGTON	23924
12-31-2011	CRAIG F. REMINGTON	23924
12-31-2013	CRAIG F. REMINGTON	23924



SHEET 95



SHEET 81

SHEET 111

SHEET 93

SHEET 130

- NOTE: EXEMPTION LIST
- BLOCK 187, LOT 3 - "EXEMPTED" - TOWNSHIP OF BARNEGAT
 - BLOCK 187, LOT 4 - "EXEMPTED" - TOWNSHIP OF BARNEGAT
 - BLOCK 187, LOT 5 - "EXEMPTED" - TOWNSHIP OF BARNEGAT
 - BLOCK 189, LOT 4 - "EXEMPTED" - TOWNSHIP OF BARNEGAT
 - BLOCK 191, LOT 2 - "EXEMPTED" - TOWNSHIP OF BARNEGAT
 - BLOCK 191, LOT 2.01 - "EXEMPTED" - TOWNSHIP OF BARNEGAT
 - BLOCK 191, LOT 2.02 - "EXEMPTED" - TOWNSHIP OF BARNEGAT
 - BLOCK 191, LOT 4 - "EXEMPTED" - TOWNSHIP OF BARNEGAT
 - BLOCK 191, LOT 6 - "EXEMPTED" - TOWNSHIP OF BARNEGAT
 - BLOCK 191, LOT 7 - "EXEMPTED" - TOWNSHIP OF BARNEGAT
 - BLOCK 191, LOT 10 - "EXEMPTED" - TOWNSHIP OF BARNEGAT
 - BLOCK 191, LOT 10.01 - "EXEMPTED" - TOWNSHIP OF BARNEGAT
 - BLOCK 191, LOT 14 - "EXEMPTED" - TOWNSHIP OF BARNEGAT
 - BLOCK 191, LOT 15 - "EXEMPTED" - TOWNSHIP OF BARNEGAT
 - BLOCK 191, LOT 19 - "EXEMPTED" - TOWNSHIP OF BARNEGAT
 - BLOCK 192, LOT 1.02 - "EXEMPTED" - TOWNSHIP OF BARNEGAT
 - BLOCK 192, LOT 3 - "EXEMPTED" - TOWNSHIP OF BARNEGAT
 - BLOCK 192, LOT 15 - "EXEMPTED" - TOWNSHIP OF BARNEGAT
 - BLOCK 192, LOT 15.01 - "EXEMPTED" - TOWNSHIP OF BARNEGAT
 - BLOCK 192, LOT 16 - "EXEMPTED" - TOWNSHIP OF BARNEGAT
 - BLOCK 192, LOT 17 - "EXEMPTED" - TOWNSHIP OF BARNEGAT
 - BLOCK 192, LOT 19 - "EXEMPTED" - TOWNSHIP OF BARNEGAT
 - BLOCK 192, LOT 20 - "EXEMPTED" - TOWNSHIP OF BARNEGAT
 - BLOCK 193, LOT 1 - "EXEMPTED" - TOWNSHIP OF BARNEGAT
 - BLOCK 193, LOT 14 - "EXEMPTED" - TOWNSHIP OF BARNEGAT
 - BLOCK 193, LOT 15 - "EXEMPTED" - TOWNSHIP OF BARNEGAT
 - BLOCK 194, LOT 3 - "EXEMPTED" - TOWNSHIP OF BARNEGAT
 - BLOCK 194, LOT 4 - "EXEMPTED" - TOWNSHIP OF BARNEGAT
 - BLOCK 194, LOT 6 - "EXEMPTED" - TOWNSHIP OF BARNEGAT
 - BLOCK 194, LOT 7 - "EXEMPTED" - TOWNSHIP OF BARNEGAT
 - BLOCK 194, LOT 9 - "EXEMPTED" - TOWNSHIP OF BARNEGAT

"THIS TAX MAP PLATE HAS BEEN DIGITALLY DRAWN USING COMPUTER-AIDED DRAFTING/DESIGN (CADD) AND COORDINATE GEOMETRY (COGO). IT IS BASED ON THE ORIGINAL DIGITALLY DRAWN TAX MAP PLATE BEARING THE OFFICIAL NEW JERSEY DIVISION OF TAXATION APPROVAL STAMP WITH APPROVAL DATE (7-31-2006) SERIAL NUMBER (896) AND SIGNATURES OF SIGNERS' JAMES J. COLL, CHIEF, LOCAL ASSESSMENT, SANTO C. DIDONATO, SUPERVISING FIELD REPRESENTATIVE. THIS TAX MAP PLATE HAS BEEN DIGITALLY UPDATED TO REFLECT CONDITIONS AS OF 12-31-2013. THE ORIGINAL DIGITALLY DRAWN TAX MAP PLATE WITH THE OFFICIAL APPROVAL STAMP IS ON FILE WITH THE TOWNSHIP OF BARNEGAT ENGINEER."

TAX MAP
TOWNSHIP OF BARNEGAT
 OCEAN COUNTY NEW JERSEY
 SCALE: 1" = 100' DATE: 12-09-2004
CRAIG F. REMINGTON LAND SURVEYOR LIC. NO. 23924
REMINGTON, VERNICK & VENA ENGINEERS
 9 ALLEN STREET, TOMS RIVER, N.J. 08753
 (732) 286-9220, FAX (732) 505-8416
 WEB SITE ADDRESS: WWW.RVVE.COM