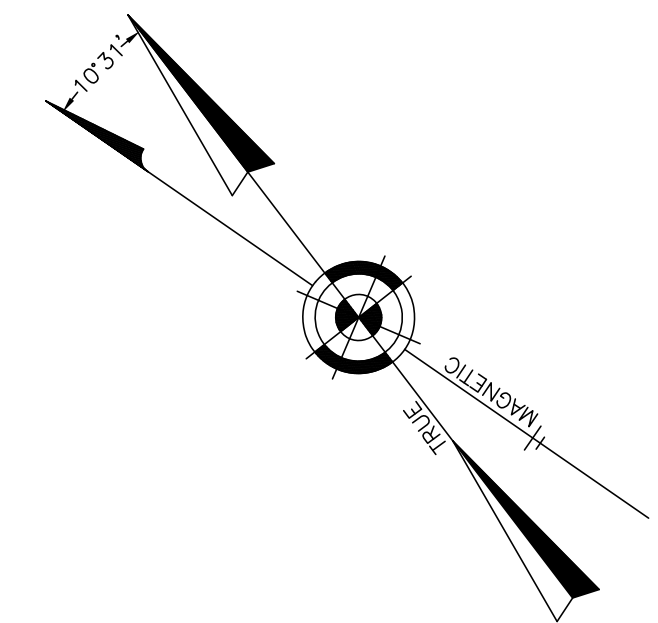
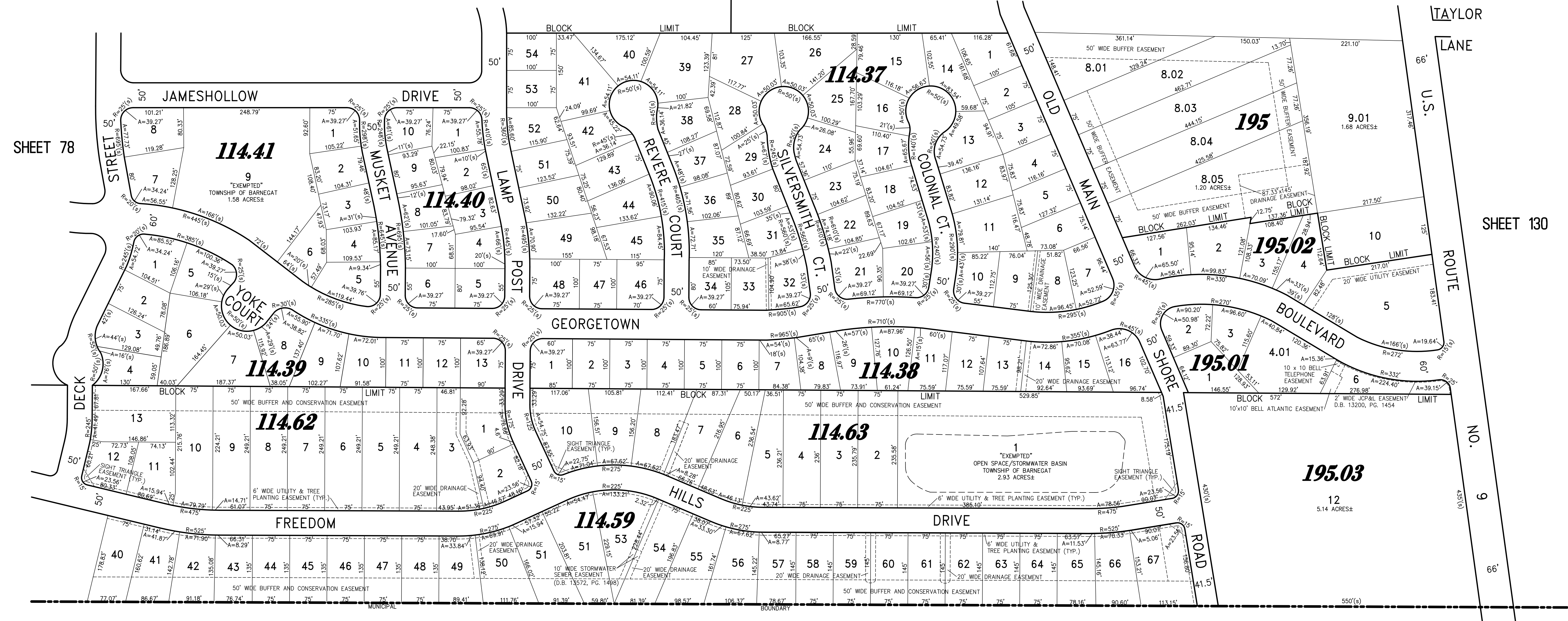


REVISIONS		
12-31-2008	CRAIG F. REMINGTON	23924



SHEET 92

SHEET 92



**TOWNSHIP OF STAFFORD  
COUNTY OF OCEAN**

**TAX MAP  
TOWNSHIP OF BARNEGAT**

OCEAN COUNTY NEW JERSEY  
SCALE: 1" = 100' DATE: 12-07-2004

**CRAIG F. REMINGTON LAND SURVEYOR LIC. NO. 23924**

**REMINGTON, VERNICK & VENA ENGINEERS**  
9 ALLEN STREET, TOMS RIVER, N.J. 08753  
(732) 286-9220, FAX (732) 505-8416  
WEB SITE ADDRESS: WWW.RVE.COM

"THIS TAX MAP PLATE HAS BEEN DIGITALLY DRAWN USING COMPUTER-AIDED DRAFTING/DESIGN (CADD) AND COORDINATE GEOMETRY (COGO). IT IS BASED ON THE ORIGINAL DIGITALLY DRAWN TAX MAP PLATE BEARING THE OFFICIAL NEW JERSEY DIVISION OF TAXATION APPROVAL STAMP WITH APPROVAL DATE (7-31-2006) SERIAL NUMBER (896) AND SIGNATURES OF SIGNERS' JAMES J. COLL, CHIEF, LOCAL ASSESSMENT; SANTO C. DIONATO, SUPERVISING FIELD REPRESENTATIVE. THIS TAX MAP PLATE HAS BEEN DIGITALLY UPDATED TO REFLECT CONDITIONS AS OF 12-31-2008. THE ORIGINAL DIGITALLY DRAWN TAX MAP PLATE WITH THE OFFICIAL APPROVAL STAMP IS ON FILE WITH THE TOWNSHIP OF BARNEGAT ENGINEER."