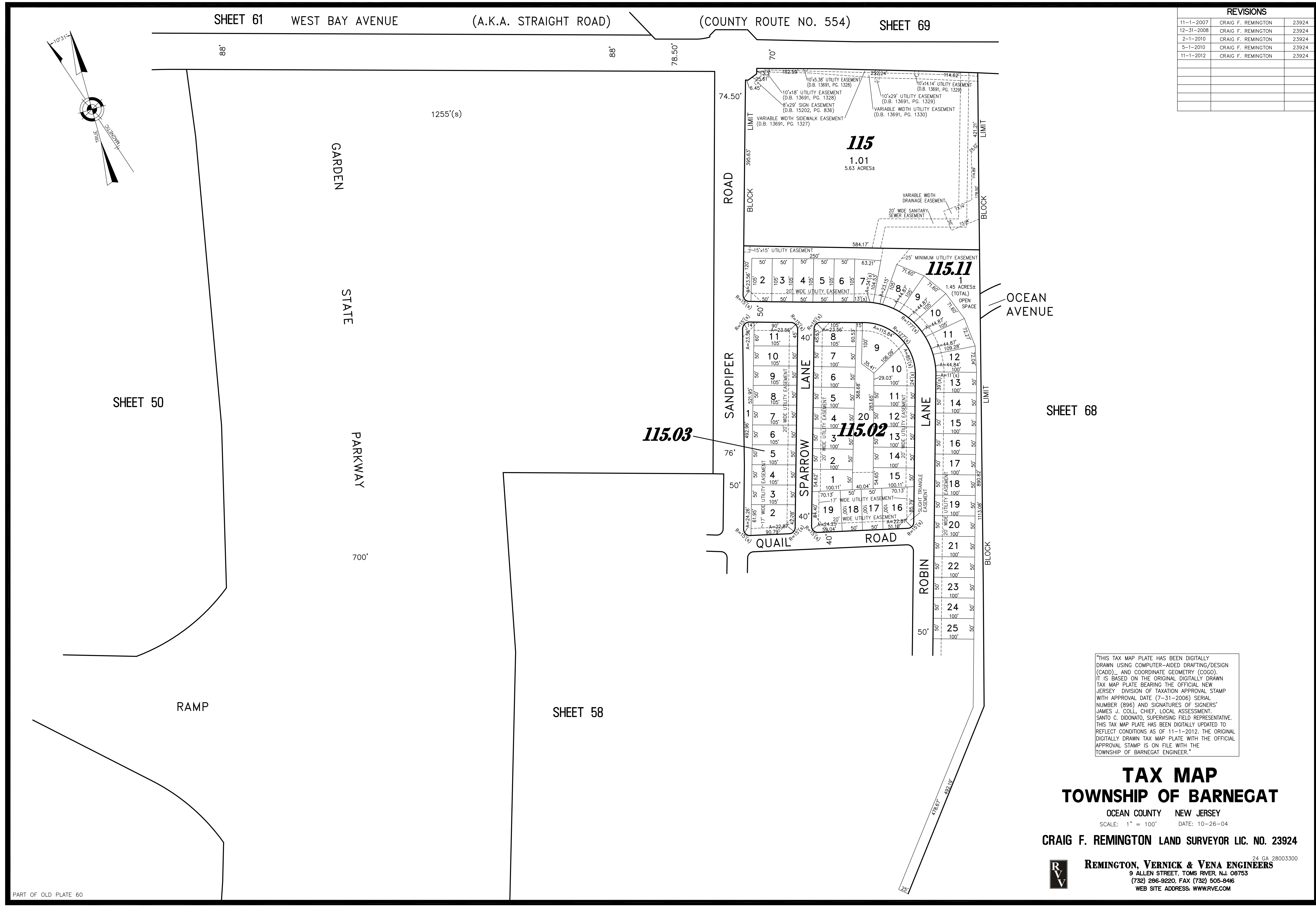
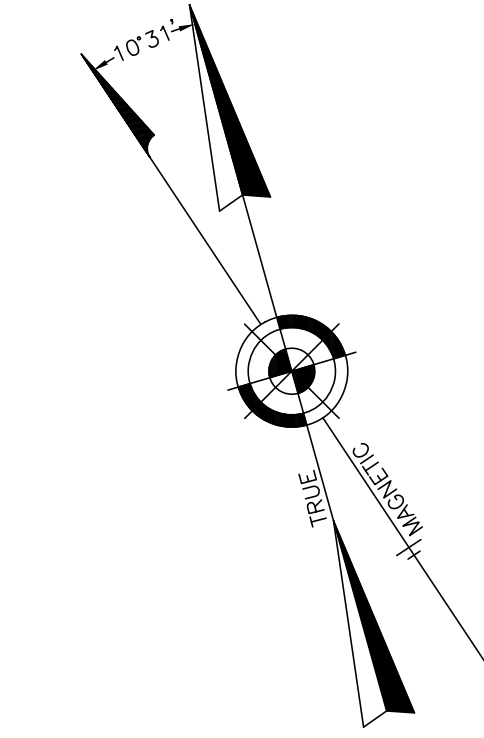



REVISIONS		
11-1-2007	CRAIG F. REMINGTON	23924
12-31-2008	CRAIG F. REMINGTON	23924
2-1-2010	CRAIG F. REMINGTON	23924
5-1-2010	CRAIG F. REMINGTON	23924
11-1-2012	CRAIG F. REMINGTON	23924



"THIS TAX MAP PLATE HAS BEEN DIGITALLY DRAWN USING COMPUTER-AIDED DRAFTING/DESIGN (CADD) AND COORDINATE GEOMETRY (COGO). IT IS BASED ON THE ORIGINAL DIGITALLY DRAWN TAX MAP PLATE BEARING THE OFFICIAL NEW JERSEY DIVISION OF TAXATION APPROVAL STAMP WITH APPROVAL DATE (7-31-2006) SERIAL NUMBER (896) AND SIGNATURES OF SIGNERS' JAMES J. COLL, CHIEF, LOCAL ASSESSMENT. SANTO C. DIDONATO, SUPERVISING FIELD REPRESENTATIVE. THIS TAX MAP PLATE HAS BEEN DIGITALLY UPDATED TO REFLECT CONDITIONS AS OF 11-1-2012. THE ORIGINAL DIGITALLY DRAWN TAX MAP PLATE WITH THE OFFICIAL APPROVAL STAMP IS ON FILE WITH THE TOWNSHIP OF BARNEGAT ENGINEER."

**TAX MAP**  
**TOWNSHIP OF BARNEGAT**  
 OCEAN COUNTY NEW JERSEY  
 SCALE: 1" = 100' DATE: 10-26-04  
**CRAIG F. REMINGTON LAND SURVEYOR LIC. NO. 23924**  
 **REMINGTON, VERNICK & VENA ENGINEERS**  
 9 ALLEN STREET, TOMS RIVER, N.J. 08753  
 (732) 286-9220, FAX (732) 505-8446  
 WEB SITE ADDRESS: WWW.RVVE.COM

PART OF OLD PLATE 60