

TAX MAP TOWNSHIP OF BARNEGAT

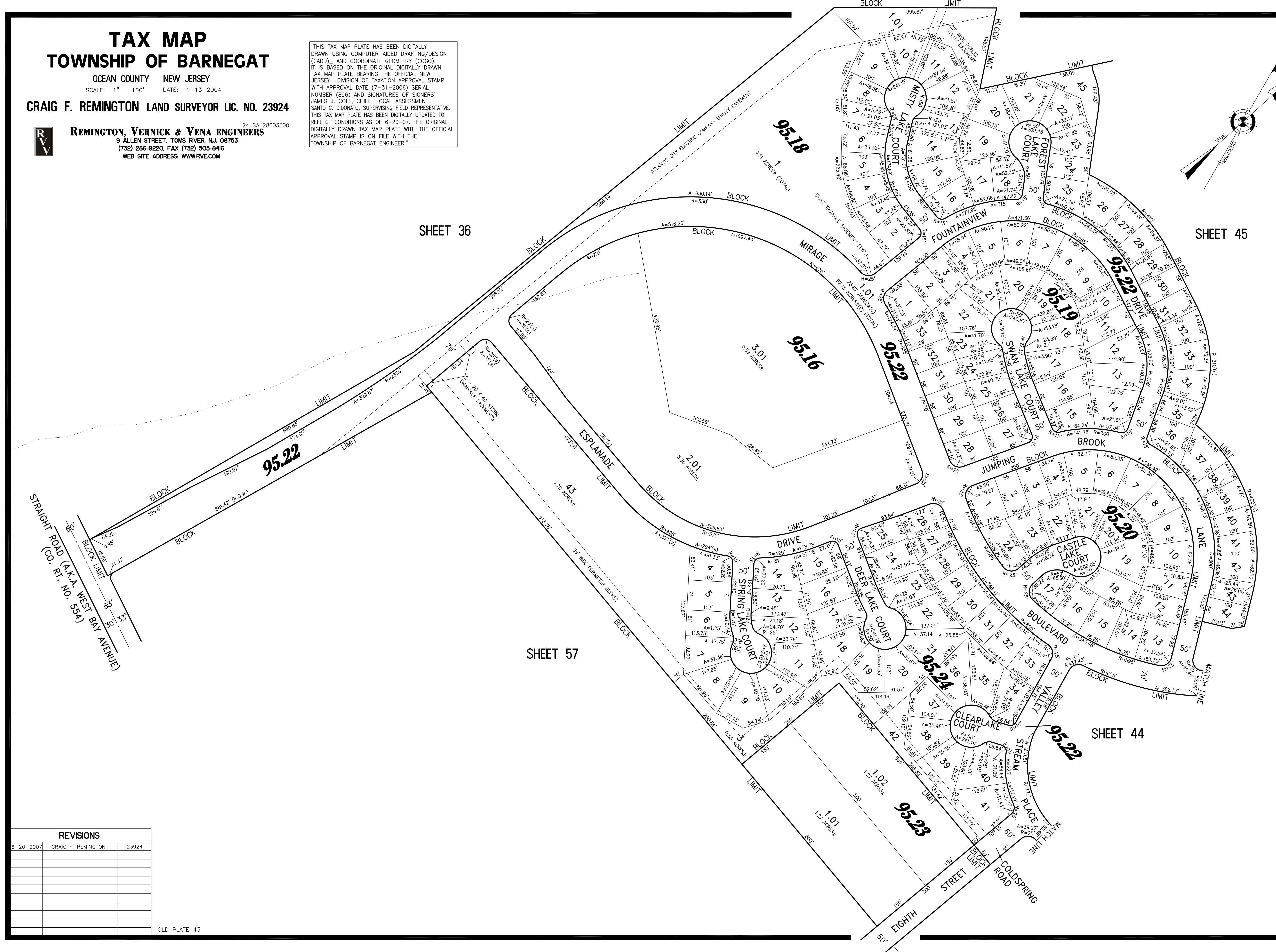
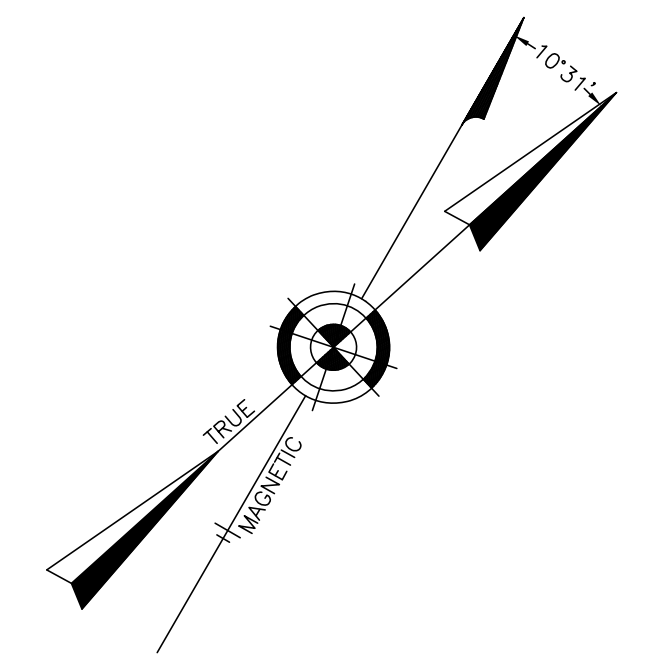
OCEAN COUNTY NEW JERSEY
SCALE: 1" = 100' DATE: 1-13-2004

CRAIG F. REMINGTON LAND SURVEYOR LIC. NO. 23924



REMINGTON, VERNICK & VENA ENGINEERS
24 GA 28003300
9 ALLEN STREET, TOMS RIVER, N.J. 08753
(732) 286-9220, FAX (732) 505-8416
WEB SITE ADDRESS: WWW.RVVE.COM

"THIS TAX MAP PLATE HAS BEEN DIGITALLY DRAWN USING COMPUTER-AIDED DRAFTING/DESIGN (CADD) AND COORDINATE GEOMETRY (COGO). IT IS BASED ON THE ORIGINAL DIGITALLY DRAWN TAX MAP PLATE BEARING THE OFFICIAL NEW JERSEY DIVISION OF TAXATION APPROVAL STAMP WITH APPROVAL DATE (7-31-2006) SERIAL NUMBER (896) AND SIGNATURES OF SIGNERS' JAMES J. COLL, CHIEF, LOCAL ASSESSMENT, SANTO C. DIDONATO, SUPERVISING FIELD REPRESENTATIVE. THIS TAX MAP PLATE HAS BEEN DIGITALLY UPDATED TO REFLECT CONDITIONS AS OF 6-20-07. THE ORIGINAL DIGITALLY DRAWN TAX MAP PLATE WITH THE OFFICIAL APPROVAL STAMP IS ON FILE WITH THE TOWNSHIP OF BARNEGAT ENGINEER."



SHEET 36

SHEET 45

SHEET 57

SHEET 44

REVISIONS		
6-20-2007	CRAIG F. REMINGTON	23924

OLD PLATE 43