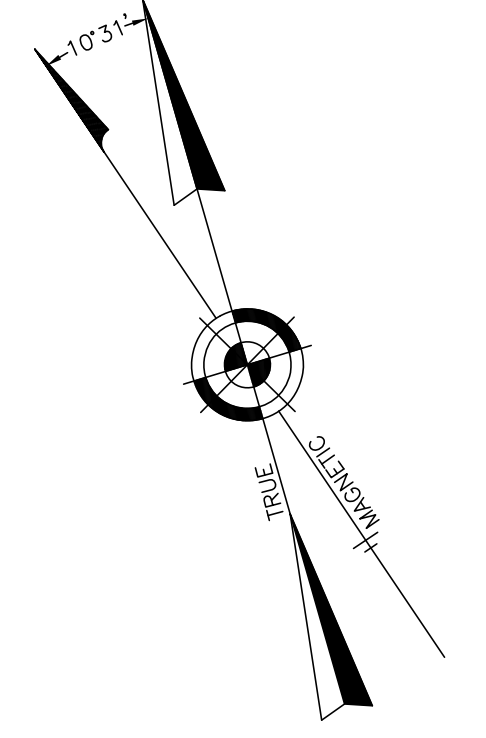


REVISIONS		
6-20-2007	CRAIG F. REMINGTON	23924
11-1-2012	CRAIG F. REMINGTON	23924
12-31-2013	CRAIG F. REMINGTON	23924

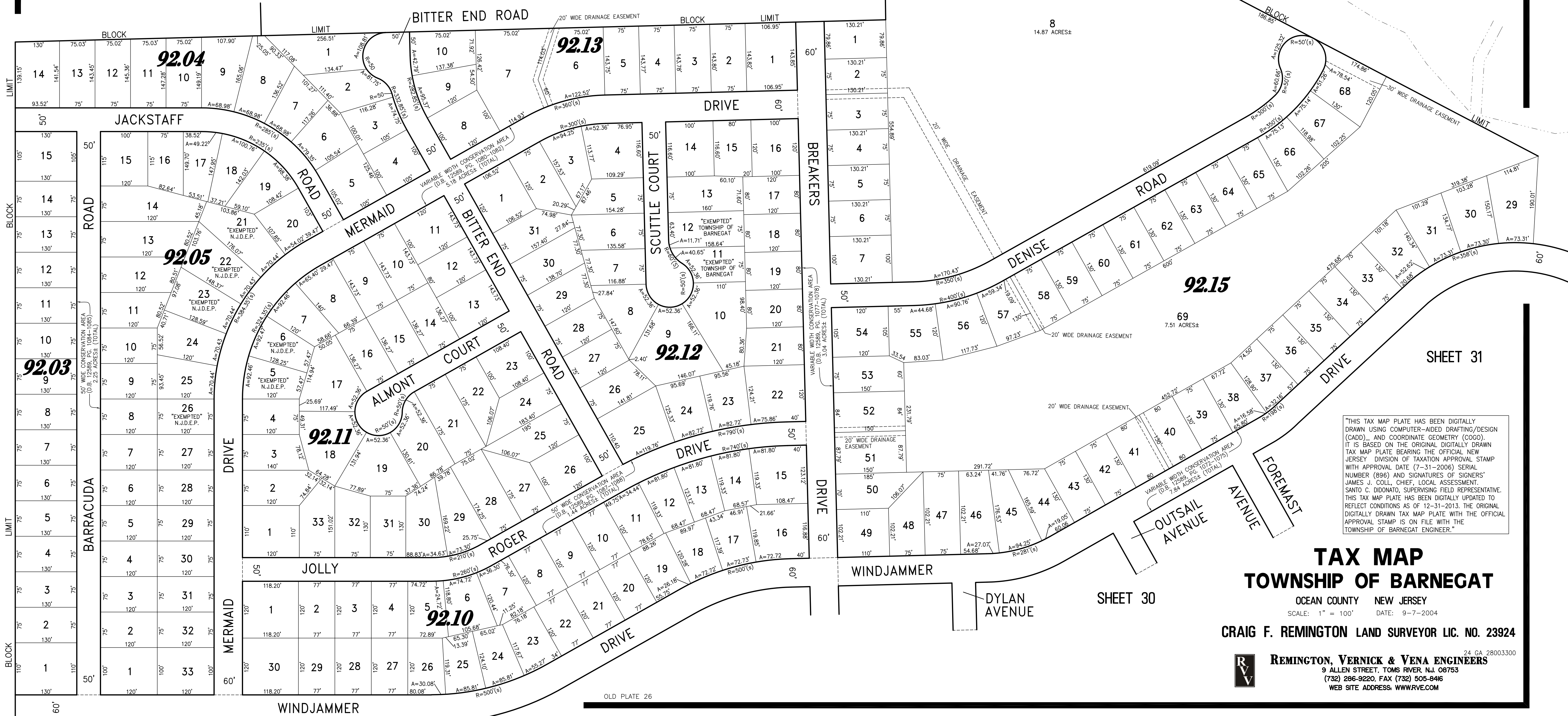


SHEET 34

SHEET 23

SHEET 34

92.14



"THIS TAX MAP PLATE HAS BEEN DIGITALLY DRAWN USING COMPUTER-AIDED DRAFTING/DESIGN (CADD) AND COORDINATE GEOMETRY (COGO). IT IS BASED ON THE ORIGINAL DIGITALLY DRAWN TAX MAP PLATE BEARING THE OFFICIAL NEW JERSEY DIVISION OF TAXATION APPROVAL STAMP WITH APPROVAL DATE (7-31-2006) SERIAL NUMBER (896) AND SIGNATURES OF SIGNERS' JAMES J. COLL, CHIEF, LOCAL ASSESSMENT; SAMTO C. DIOMATO, SUPERVISING FIELD REPRESENTATIVE. THIS TAX MAP PLATE HAS BEEN DIGITALLY UPDATED TO REFLECT CONDITIONS AS OF 12-31-2013. THE ORIGINAL DIGITALLY DRAWN TAX MAP PLATE, WITH THE OFFICIAL APPROVAL STAMP IS ON FILE WITH THE TOWNSHIP OF BARNEGAT ENGINEER."

### TAX MAP TOWNSHIP OF BARNEGAT

OCEAN COUNTY NEW JERSEY  
SCALE: 1" = 100' DATE: 9-7-2004

CRAIG F. REMINGTON LAND SURVEYOR LIC. NO. 23924

**REMINGTON, VERNICK & VENA ENGINEERS**  
9 ALLEN STREET, TOMS RIVER, N.J. 08753  
(732) 286-9220, FAX (732) 505-8416  
WEB SITE ADDRESS: WWW.RVVE.COM

OLD PLATE 26

SHEET 23

SHEET 31

SHEET 30

SHEET 25

WRIGHT ROAD