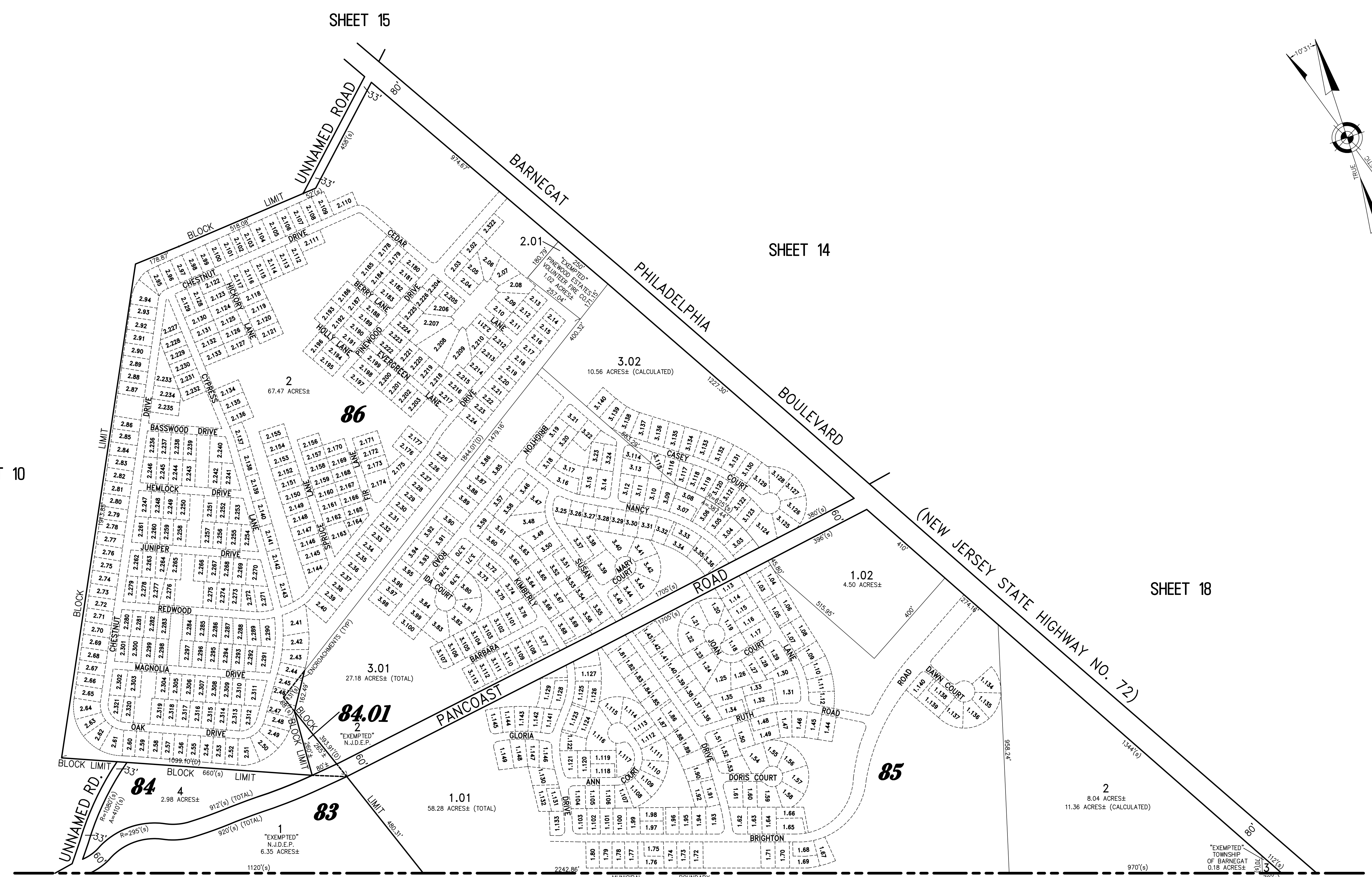
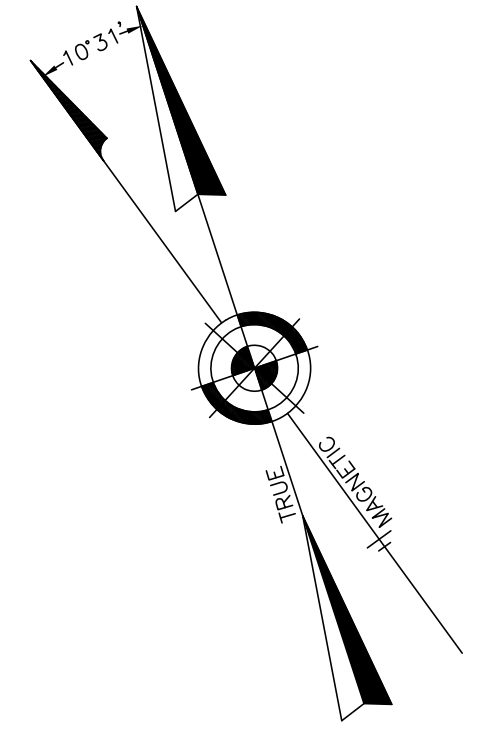


REVISIONS		
12-31-2008	CRAIG F. REMINGTON	23924
11-1-2012	CRAIG F. REMINGTON	23924
3-12-2013	CRAIG F. REMINGTON	23924



SHEET 10

SHEET 15

SHEET 14

SHEET 18

**TOWNSHIP OF STAFFORD
COUNTY OF OCEAN**

NOTE: UNIT NUMBERS AND DASHED LINES SHOW THE APPROXIMATE LOCATION OF THE MOBILE HOMES.

**TAX MAP
TOWNSHIP OF BARNEGAT**

OCEAN COUNTY NEW JERSEY
SCALE: 1" = 100' DATE: 4-12-2005
CRAIG F. REMINGTON LAND SURVEYOR LIC. NO. 23924

"THIS TAX MAP PLATE HAS BEEN DIGITALLY DRAWN USING COMPUTER-AIDED DRAFTING/DESIGN (CADD) AND COORDINATE GEOMETRY (COGO). IT IS BASED ON THE ORIGINAL DIGITALLY DRAWN TAX MAP PLATE BEARING THE OFFICIAL NEW JERSEY DIVISION OF TAXATION APPROVAL STAMP WITH APPROVAL DATE (7-31-2006) SERIAL NUMBER (896) AND SIGNATURES OF SIGNERS' JAMES J. COLL, CHIEF, LOCAL ASSESSMENT, SANTO C. DIDONATO, SUPERVISING FIELD REPRESENTATIVE. THIS TAX MAP PLATE HAS BEEN DIGITALLY UPDATED TO REFLECT CONDITIONS AS OF 3-12-2013. THE ORIGINAL DIGITALLY DRAWN TAX MAP PLATE WITH THE OFFICIAL APPROVAL STAMP IS ON FILE WITH THE TOWNSHIP OF BARNEGAT ENGINEER."

REMINGTON, VERNICK & VENA ENGINEERS
24 GA 28003300
9 ALLEN STREET, TOMS RIVER, NJ 08753
(732) 286-9220, FAX (732) 505-846
WEB SITE ADDRESS: WWW.RVVE.COM