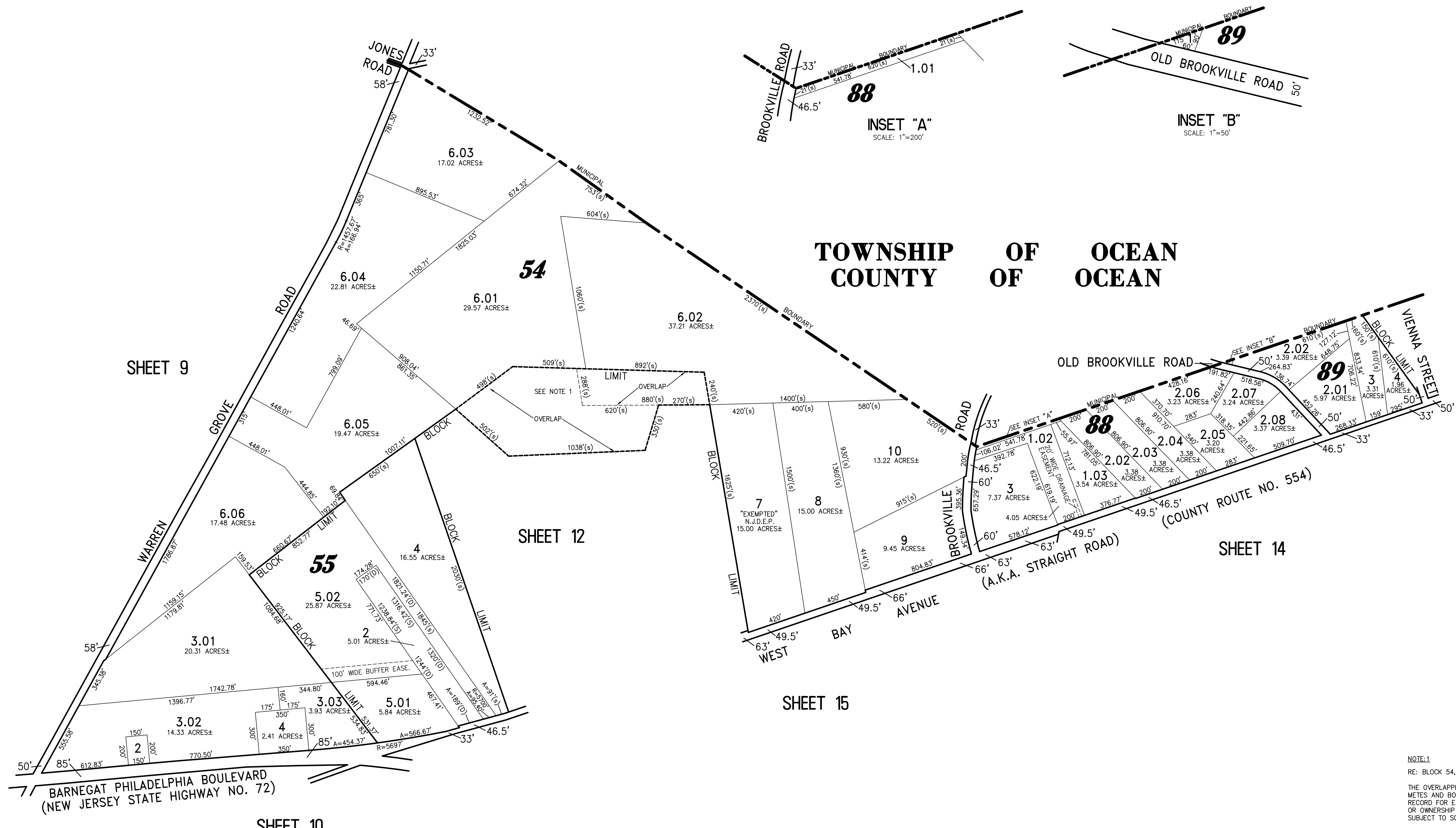
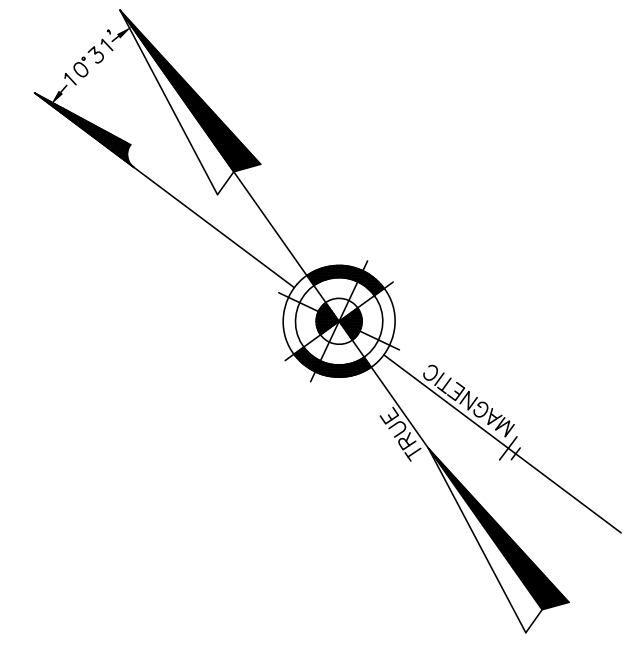


REVISIONS		
11-27-2006	CRAIG F. REMINGTON	23924
11-1-2007	CRAIG F. REMINGTON	23924
2-22-2012	CRAIG F. REMINGTON	23924
3-12-2013	CRAIG F. REMINGTON	23924



NOTE:1
 RE: BLOCK 54, LOTS 6, 6.01, & 6.02 AND LOTS DETAILED ON SHEET 11.
 THE OVERLAPPING LINES SHOWN ARE PLOTTED IN ACCORDANCE WITH THE METES AND BOUNDS DESCRIPTIONS APPEARING IN THE LAST DEED OF RECORD FOR EACH PARCEL AND DO NOT PURPORT TO REPRESENT TITLE OR OWNERSHIP STATUS IN ANY MANNER. THESE SITUATIONS ARE SUBJECT TO SOLUTION BY THE PROPERTY OWNERS CONCERNED.

"THIS TAX MAP PLATE HAS BEEN DIGITALLY DRAWN USING COMPUTER-AIDED DRAFTING/DESIGN (CADD) AND COORDINATE GEOMETRY (COGO). IT IS BASED ON THE ORIGINAL DIGITALLY DRAWN TAX MAP PLATE BEARING THE OFFICIAL NEW JERSEY DIVISION OF TAXATION APPROVAL STAMP WITH APPROVAL DATE (7-31-2006) SERIAL NUMBER (896) AND SIGNATURES OF SIGNERS' JAMES J. COLL, CHIEF, LOCAL ASSESSMENT, SANTO C. DIDONATO, SUPERVISING FIELD REPRESENTATIVE. THIS TAX MAP PLATE HAS BEEN DIGITALLY UPDATED TO REFLECT CONDITIONS AS OF 3-12-2013. THE ORIGINAL DIGITALLY DRAWN TAX MAP PLATE WITH THE ORIGINAL APPROVAL STAMP IS ON FILE WITH THE TOWNSHIP OF BARNEGAT ENGINEER."

TAX MAP
TOWNSHIP OF BARNEGAT
 OCEAN COUNTY NEW JERSEY
 SCALE: 1" = 400' DATE: 4-25-2005
CRAIG F. REMINGTON LAND SURVEYOR LIC. NO. 23924
 REMINGTON, VERNICK & VENA ENGINEERS
 9 ALLEN STREET, TOMS RIVER, N.J. 08753
 (732) 286-9220, FAX (732) 505-8416
 WEB SITE ADDRESS: WWW.RVVE.COM