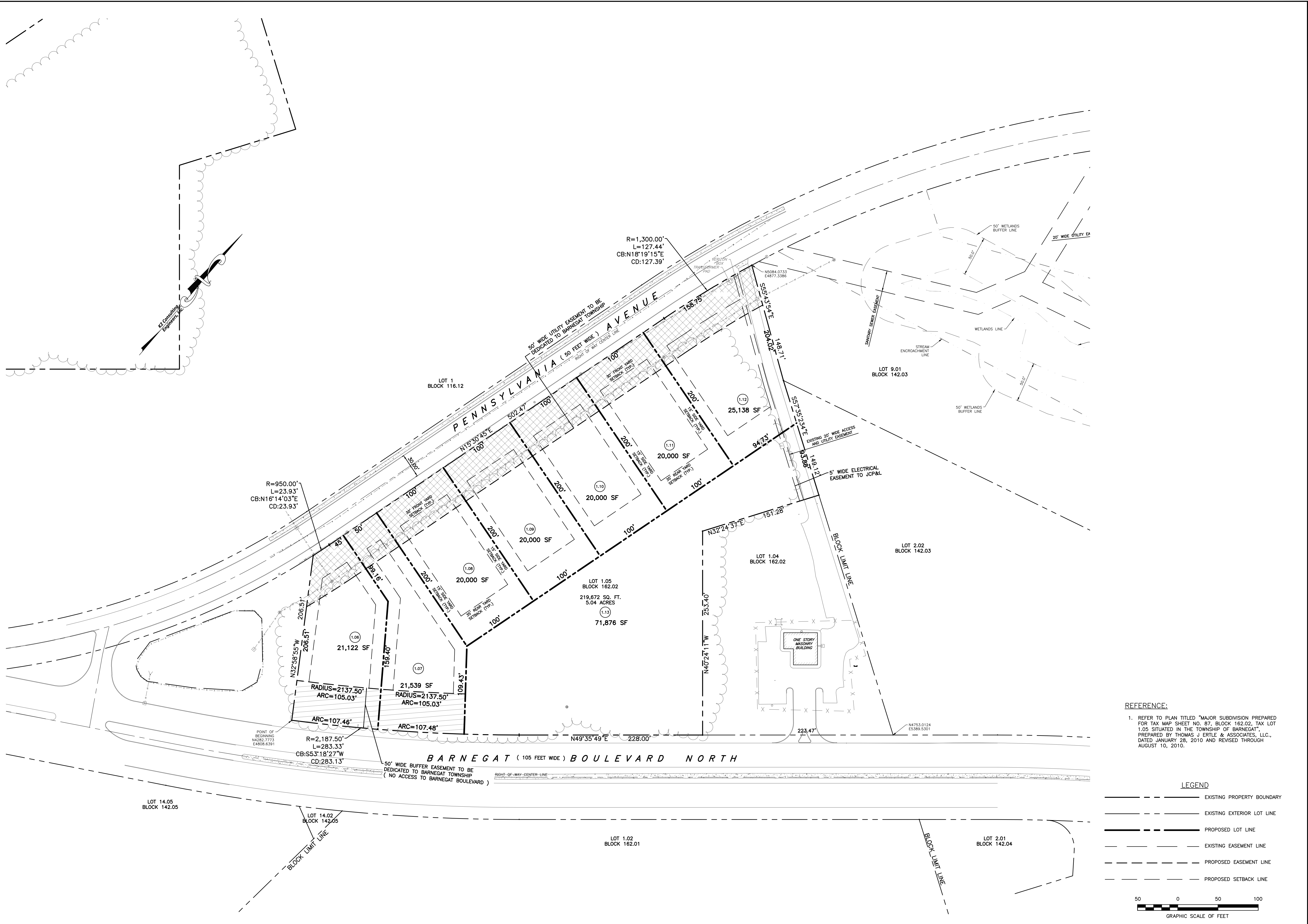


DWG. NAME: W:\PROJECT FILES\PD20 Projects\PD20 - Pennsylvania Avenue Subdivision\08-AUTOCAD\DESIGN\plan of lots.dwg



REFERENCE:
 1. REFER TO PLAN TITLED "MAJOR SUBDIVISION PREPARED FOR TAX MAP SHEET NO. 87, BLOCK 162.02, TAX LOT 1.05 SITUATED IN THE TOWNSHIP OF BARNEGAT", PREPARED BY THOMAS J. ERTL & ASSOCIATES, L.L.C., DATED JANUARY 28, 2010 AND REVISED THROUGH AUGUST 10, 2010.

LEGEND

- EXISTING PROPERTY BOUNDARY
- EXISTING EXTERIOR LOT LINE
- PROPOSED LOT LINE
- EXISTING EASEMENT LINE
- PROPOSED EASEMENT LINE
- PROPOSED SETBACK LINE

DATE: 12/28/2020
 DESIGN BY: JWK
 DRAWN BY: WFR
 SCALE: 1"=50'
 JOB NO.: PD20-069
 SHEET: 4 OF 13

GRAPHIC SCALE OF FEET
 0 50 100

K2
 Consulting Engineers, Inc.
 Professional Civil Engineers
 Certificate of Authorization
 #24GA26187400

36 Tanner Street, Suite 100
 Haddonfield, NJ 08033
 Phone - 856.310.5005
 Fax - 856.616.2441
 www.K2CE.com

PRELIMINARY PLAN OF LOTS
 200 PENNSYLVANIA AVENUE
 BLOCK 162.02 - LOT 1.05 - TAX MAP SHEET 87
 SITUATE IN THE
 TOWNSHIP OF BARNEGAT, OCEAN COUNTY, NEW JERSEY

John W. Kornick
JOHN W. KORNIK, P.E.
 Professional Engineer, New Jersey Lic. No. 24GE04928500

REVISION	DATE	BY