

SCHOOL BOARD PRESIDENT

[Signature]
SIGNATURE

CHIEF SCHOOL ADMINISTRATOR

[Signature]
SIGNATURE

ESIP AT BARNEGAT HIGH SCHOOL

180 BENGAL BLVD, BARNEGAT,
NJ 08005
FOR
THE

BARNEGAT BOARD OF EDUCATION

600 BARNEGAT BOULEVARD N,
BARNEGAT, NJ 08005

SUPERINTENDENT: DR. BRIAN LATWIS
BUSINESS ADMINISTRATOR: STEPHEN BRENNAN

SPIEZLE COMMISSION NUMBER: 20K019

DOE STATE PROJECT NUMBER(S): 29-0185-030-21-1000

JOHNSON & URBAN LLC.
MEP ENGINEERS



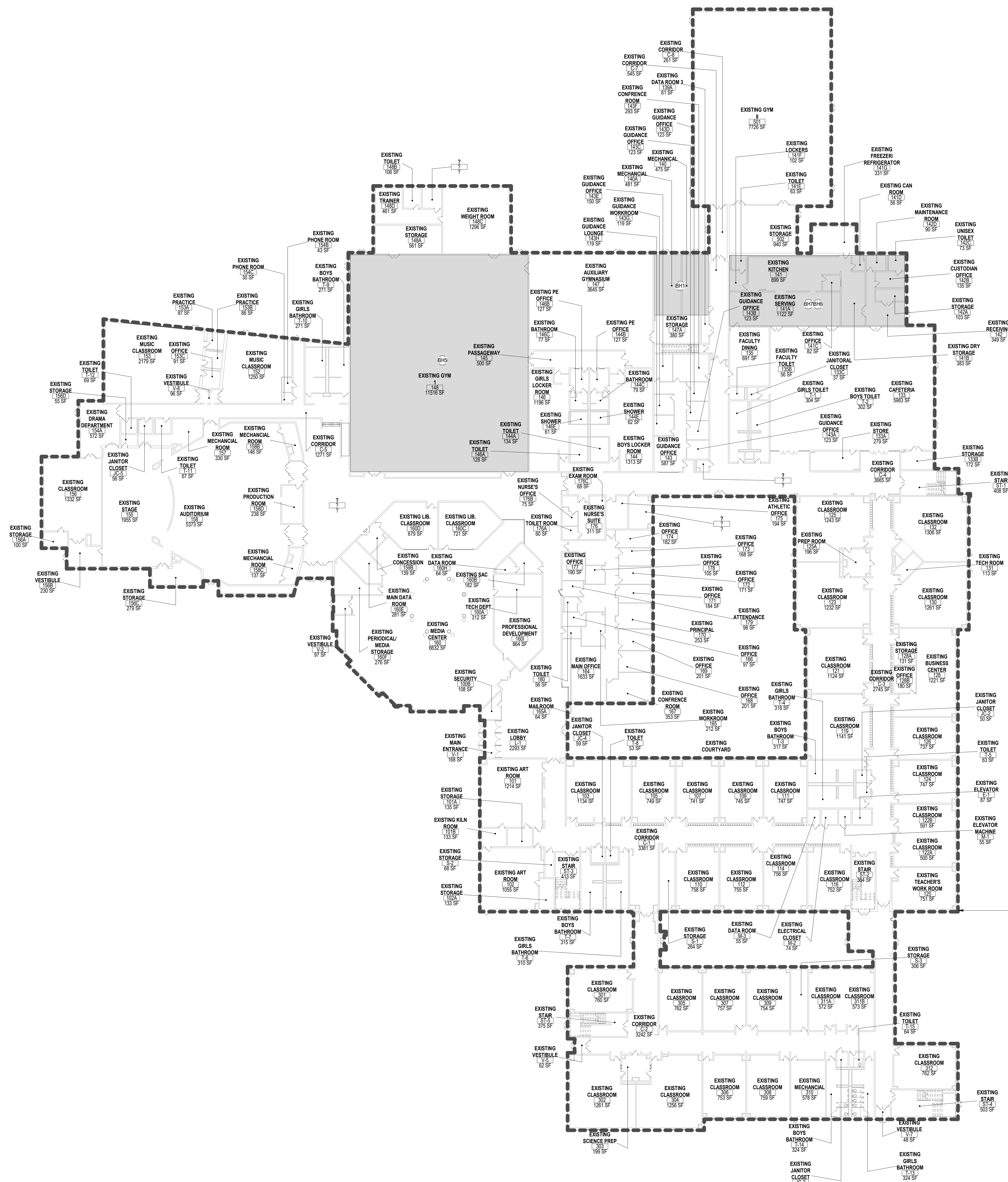
CHA CONSULTANTS
ESIP ENGINEERS

SPIEZLE ARCHITECTURAL GROUP, INC
1395 YARDVILLE HAMILTON SQUARE ROAD, SUITE 2A HAMILTON, NJ
08691
PHONE: 609.695.7400 FAX: 609.394.2274
WWW.SPIEZLE.COM

DOE SUBMISSION: 9/28/20

DOE SCHEMATIC SUBMISSION

ESIP AT BARNEGAT HIGH SCHOOL
20K019
DOE1.0



1 FIRST FLOOR PLAN
1:200

CODE REVIEW:

CERTIFICATE:



SPIEZE ARCHITECTURAL GROUP, INC.
1395 YARDVILLE HAMILTON SQUARE ROAD
SUITE 2A
HAMILTON, NJ 08691
Phone: 609-695-7400

SIGNATURE:
THOMAS S. PERRINO 2 IAD1 505400
SCOTT E. DONNE 2 IAD1 6146400
STEVEN E. DECEL 2 IAD1 170100
SPIEZE ARCHITECTURAL GROUP, INC. 2 IAD1 5542000
2 IAD0063000

SEAL:

CONSULTANTS:

DOE SCHEMATIC SUBMISSION

PROJECT:
ESIP AT BARNEGAT HIGH SCHOOL
180 BENGAL BLVD, BARNEGAT, NJ 08005

FOR:
BARNEGAT BOARD OF EDUCATION
600 BARNEGAT BOULEVARD N, BARNEGAT, NJ 08005

FOR CODE REVIEW: DDMMYYYY

REVISIONS:	REVISION NAME	DATE
1		

FOR BID: DDMMYYYY

DRAWING TITLE:
FIRST FLOOR PLAN

COMMISSION NUMBER:
20K019

AGENCY NUMBER:
29-0185-030-21-1000

DO NOT SCALE THE DRAWINGS

DRAWING NUMBER:
BH-DOE 1.1

APPLICABLE CODES (NJ)

1. NJ UNIFORM CONSTRUCTION CODE - N.J.A.C. 5:23
2. INTERNATIONAL BUILDING CODE - 2018 NEW JERSEY EDITION
3. NATIONAL STANDARD PLUMBING CODE - 2018
4. NATIONAL ELECTRICAL CODE (NFPA 70) - 2017
5. ENERGY SUBCODE - ASHRAE 90.1-2016
6. INTERNATIONAL MECHANICAL CODE - 2018
7. INTERNATIONAL FUEL GAS CODE - 2018
8. REHABILITATION SUBCODE, N.J.A.C. 5:23-6
9. BARRIER FREE SUBCODE, CHAPTER 11 OF BC-2018 & ICC/ANSI A117.1-2009
10. ELEVATOR SUBCODE - N.J.A.C. 5:23-12

GENERAL NOTES

1. THESE PROJECTS WILL NOT CHANGE ROOM AREAS OR EXISTING CEILING HEIGHTS.
2. CLASSROOMS AND INSTRUCTIONAL AREAS WILL HAVE A MINIMUM OF 30 FOOTCANDLES.
3. RECEPTION ROOMS, GYMS, AUDITORIUMS AND THE LIKE WILL HAVE A MINIMUM OF 30 FOOTCANDLES.
4. LOCKER ROOMS, CORRIDORS, TOILET ROOMS AND STAIRS WILL HAVE A MINIMUM OF 10 FOOTCANDLES.
5. NEW SOLAR CANOPIES IN THE PARKING LOTS WILL NOT CHANGE THE EXISTING TRAFFIC PATTERNS.

DOE MINIMUM FOOTCANDLES

- MIN. 50 FOOTCANDLES - CLASSROOMS AND INSTRUCTIONAL AREAS, MEDIA CENTER, WORK ROOMS, OFFICES, ART ROOM, LABORATORIES, CONFERENCE ROOMS; LIGHTING TO BE A MINIMUM OF 9'-6" A.F.F. IN MEDIA CENTER.
- MIN. 30 FOOTCANDLES - CAFETERIA / GYMNASIUM; LIGHTING TO BE A MINIMUM OF 22' A.F.F. IN GYMNASIUM.
- MIN. 10 FOOTCANDLES - TOILET ROOMS, CORRIDORS WITH LOCKERS AND STAIRWAYS
- MIN 5 FOOTCANDLES - CORRIDORS WITH OUT LOCKERS AND STOREROOMS

Key Value	Keynote Text
BH1	HVAC SYSTEMS MEASURES - REMOVE 2 BOILER STRINGS INSTALLED IN 2004 AND INSTALL 2 NEW 2000 MBH HIGH EFFICIENCY CONDENSING MODULATING NATURAL GAS BOILERS TO BE DESIGNATED AS LEAD BOILERS.
BH2	HVAC SYSTEMS MEASURES - CONVERT CONSTANT VOLUME AHU-1, AH-4, AH-5, AH-10 AND AH-15 TO SINGLE ZONE VAV UNITS.
BH3	HVAC SYSTEMS MEASURES - REPLACE MINI-SPLIT UNITS WITH NEW HIGH EFFICIENCY UNITS.
BH4	HVAC SYSTEMS MEASURES - REPLACE EXISTING AIR-COOLED CHILLER WITH A NEW HIGH EFFICIENCY UNIT.
BH5	CONTROLS SYSTEM UPGRADES - INSTALL CO2 SENSORS IN GYMNASIUM SPACES ARE SERVED BY UNITS GYM RTU-1 AND GYM RTU-2 TO ALLOW OA FLOWS TO BE REDUCED AS CONDITIONS ALLOW.
BH6	CONTROLS SYSTEM UPGRADES - REPLACE EXISTING EVAPORATOR FAN MOTORS WITH HIGH EFFICIENCY EC MOTORS AND INSTALL CONTROLS ON EXISTING WALK-IN REFRIGERATOR AND FREEZER.
BH7	CONTROLS SYSTEM UPGRADES - IMPLEMENT A CONTROL SEQUENCE ON EXISTING KITCHEN HOOD CONTROLS.
BH8	CONTROLS SYSTEM UPGRADES - INSTALL OCCUPANCY-BASED CONTROLS ON 10 VENDING MACHINES.
BH9	INTERIOR LED LIGHTING - CONVERT ALL NON-LED FIXTURES AND LAMPS TO LED. ALL LINEAR FLUORESCENT LAMP CONVERSIONS WILL BE SELF-DRIVEN BALLAST BYPASS PLUG-AND-PLAY (PNP) LAMPS.
BH10	EXTERIOR LED LIGHTING UPGRADES - REMOVE ALL EXTERIOR HD LAMPS AND CFLS AND REPLACE WITH LED LIGHTING LAMPS AND FIXTURES.
BH11	INSTALL FLOW AERATORS ON 102 FAUCETS AND LAB/SLOP SINK IN BUILDING.

Scale bars on the left side of the drawing, showing increments of 1/8", 1/4", 3/8", 1/2", 5/8", 3/4", 7/8", and 1".

THIS DRAWING IS FORMATTED TO BE PRINTED AT 30"x42"

CODE REVIEW:

CERTIFICATE:



SPIEZLE ARCHITECTURAL GROUP INC.
1395 YARDVILLE HAMILTON SQUARE ROAD
SUITE 2A
HAMILTON, NJ 08691
Phone: 609-695-7400

SIGNATURE:
THOMAS S. PERRINO 2 IAD1505400
SCOTT E. DONNE 2 IAD16174400
STEVEN LODGE 2 IAD11770100
STEVEN G. SIEGEL 2 IAD15543000
SPIEZLE ARCHITECTURAL GROUP, INC. 2 IAC00063000

SEAL:

CONSULTANTS:

DOE SCHEMATIC
SUBMISSION

PROJECT:

ESIP AT BARNEGAT
HIGH SCHOOL

180 BENGAL BLVD, BARNEGAT, NJ
08005

FOR

BARNEGAT BOARD
OF EDUCATION

600 BARNEGAT BOULEVARD N,
BARNEGAT, NJ 08005

FOR CODE REVIEW: DDMMYYYY

REVISIONS:

REVISION	REVISION NAME	DATE
1		

FOR BID: DDMMYYYY

DRAWING TITLE:

SITE PLAN

COMMISSION NUMBER:

20K019

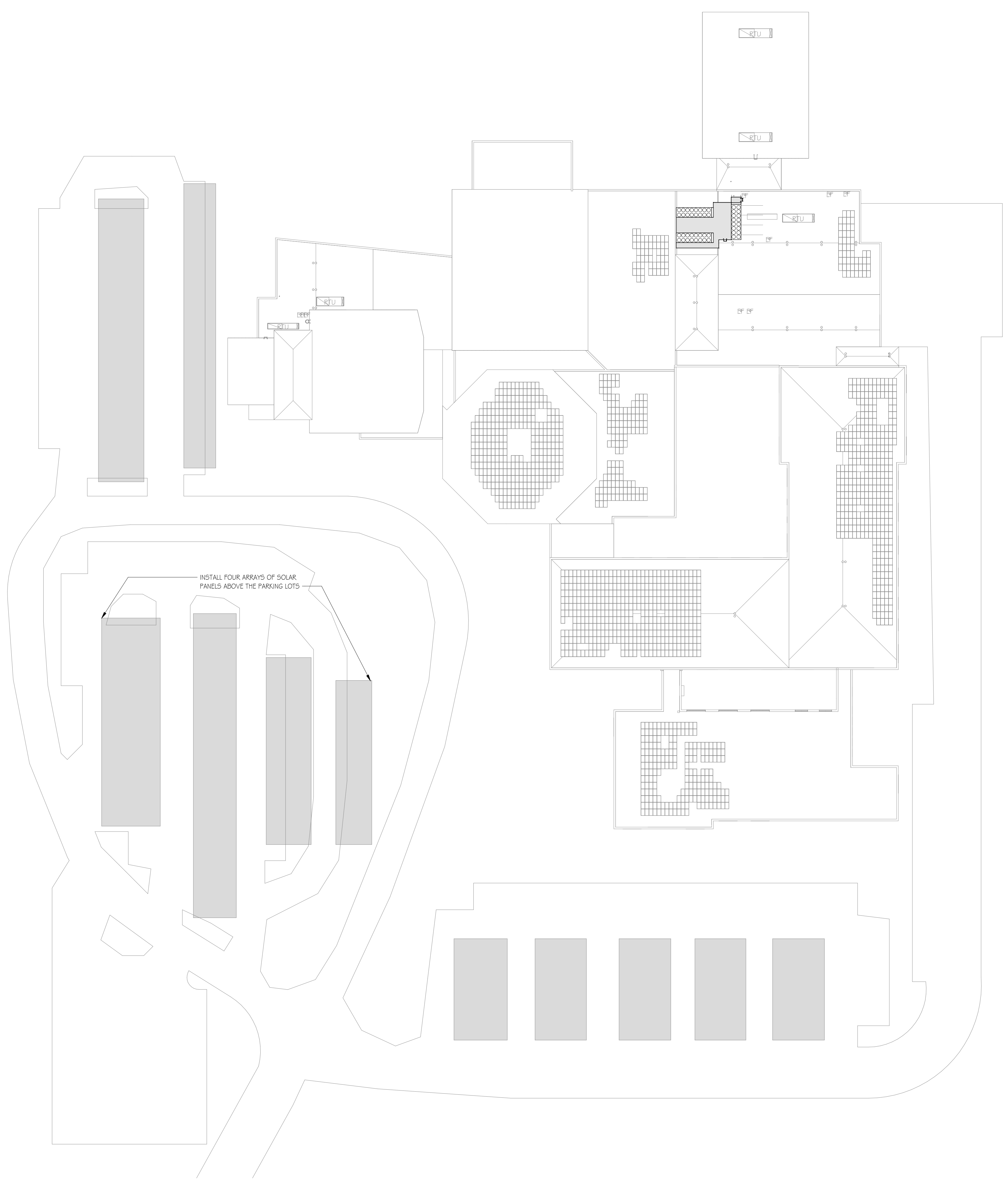
AGENCY NUMBER:

29-0185-030-21-1000

DO NOT SCALE THE DRAWINGS

DRAWING NUMBER:

BH-DOE 1.3



GENERAL NOTES

1. THESE PROJECTS WILL NOT CHANGE ROOM AREAS OR EXISTING CEILING HEIGHTS.
2. CLASSROOMS AND INSTRUCTIONAL AREAS WILL HAVE A MINIMUM OF 50 FOOTCANDLES.
3. RECEPTION ROOMS, GYMS, AUDITORIUMS AND THE LIKE WILL HAVE A MINIMUM OF 30 FOOTCANDLES.
4. LOCKER ROOMS, CORRIDORS, TOILET ROOMS AND STAIRS WILL HAVE A MINIMUM OF 10 FOOTCANDLES.
5. NEW SOLAR CANOPIES IN THE PARKING LOTS WILL NOT CHANGE THE EXISTING TRAFFIC PATTERNS.

1 SITE PLAN
1" = 40'-0"

