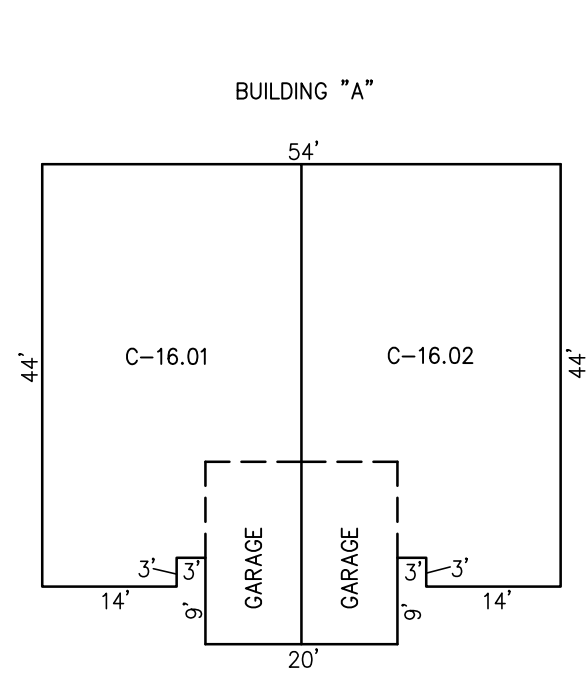


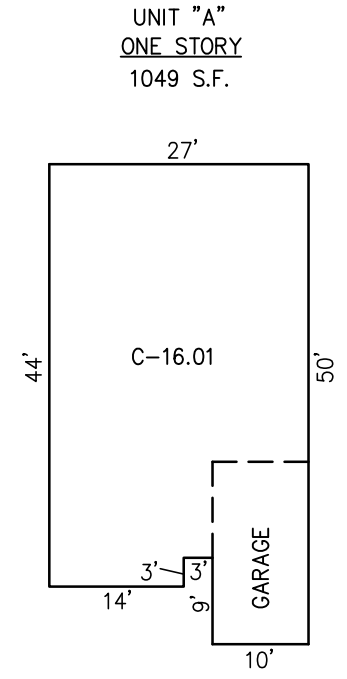
REVISIONS		
6-20-2007	CRAIG F. REMINGTON	23924



BLOCK 208.06  
LOTS 16.01, 27.01

BLOCK 208.07  
LOTS 10.01, 12.01, 19.01,  
21.01, 22.01, 23.01

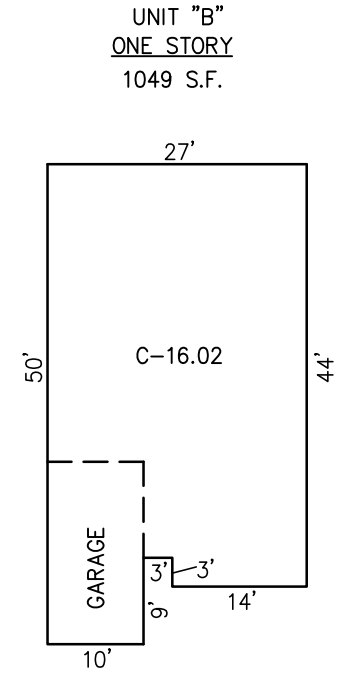
BLOCK 208.08  
LOTS 3.01, 5.01, 7.01



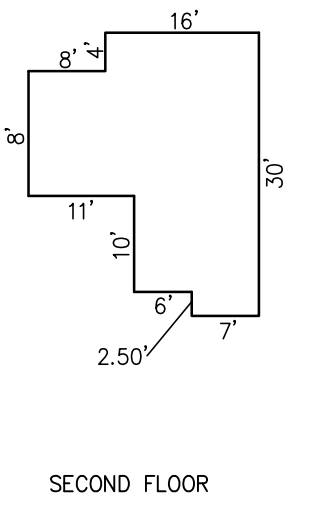
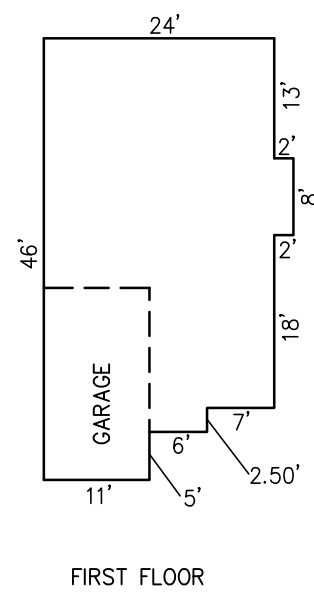
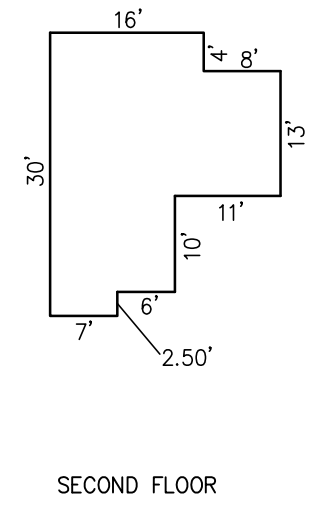
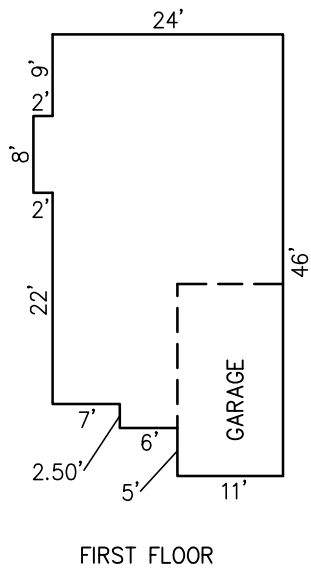
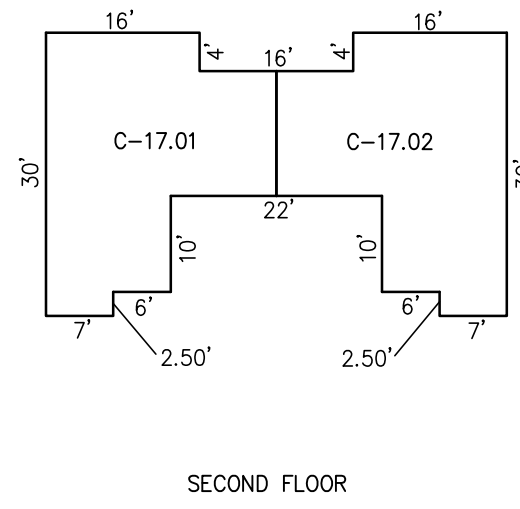
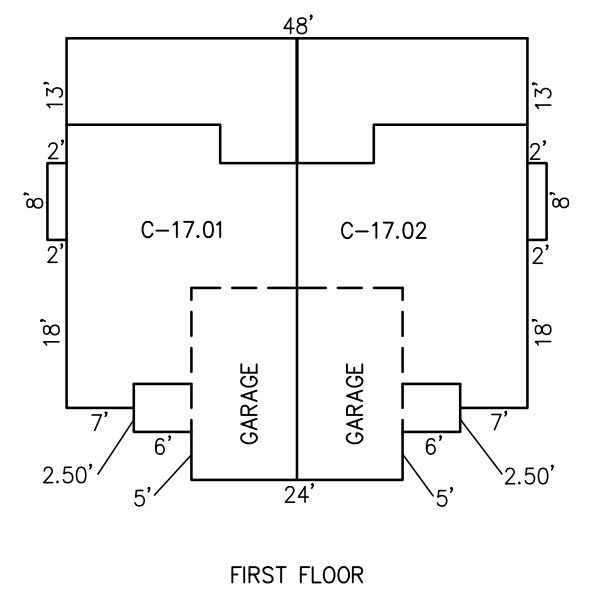
BLOCK 208.06  
LOTS 16.01, 27.01

BLOCK 208.07  
LOTS 10.01, 12.01, 19.01,  
21.01, 22.01, 23.01

BLOCK 208.08  
LOTS 3.01, 5.01, 7.01



BUILDING "B"



BLOCK 208.06  
LOTS 17.01, 22.01, 25.01, 26.01,  
28.01, 29.01, 30.01, 31.01

BLOCK 208.07  
LOTS 4.01, 8.01, 11.01,  
13.01, 20.01

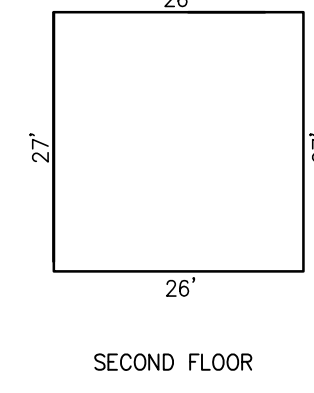
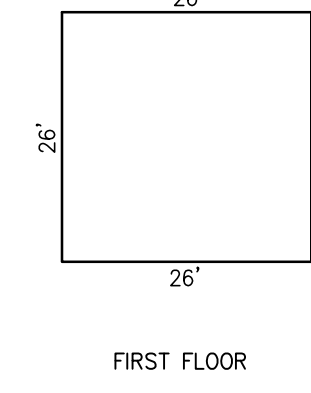
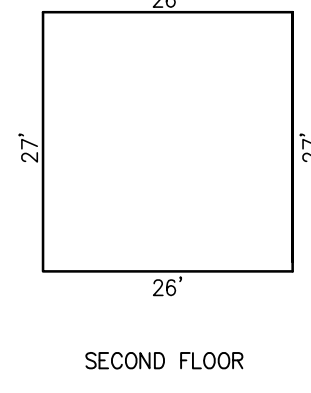
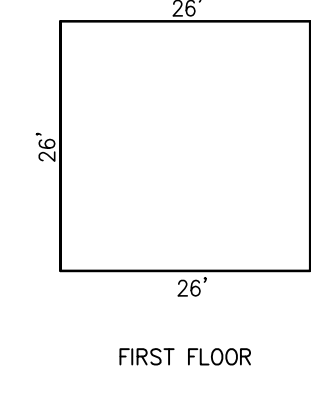
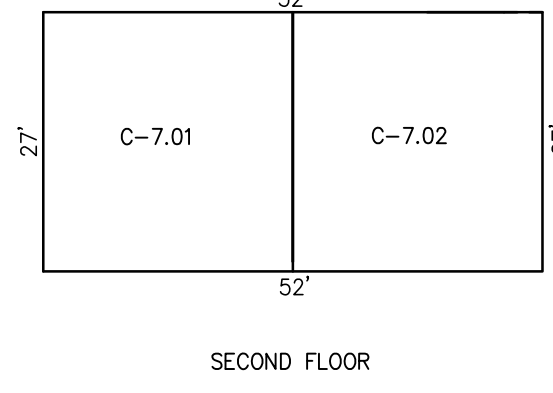
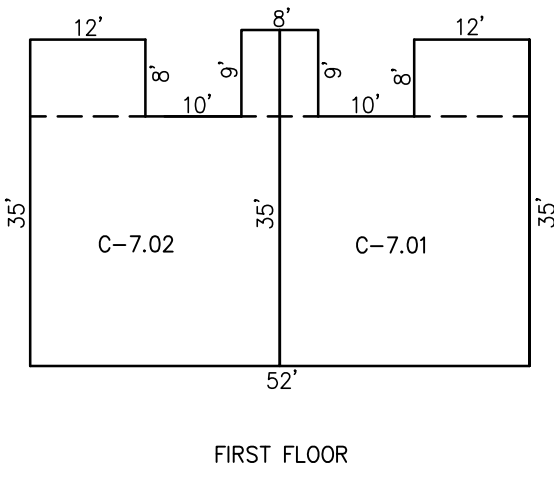
BLOCK 208.08  
LOTS 2.01, 4.01, 6.01, 8.01

BLOCK 208.06  
LOTS 17.01, 22.01, 25.01, 26.01,  
28.01, 29.01, 30.01, 31.01

BLOCK 208.07  
LOTS 4.01, 8.01, 11.01,  
13.01, 20.01

BLOCK 208.08  
LOTS 2.01, 4.01, 6.01, 8.01

BUILDING "C"



BLOCK 208.06  
LOTS 1.01, 4.01, 8.01, 9.01,  
10.01, 13.01, 14.01,  
15.01, 18.01, 21.01,  
23.01, 24.01, 32.01

BLOCK 208.07  
LOTS 1.01, 2.01, 3.01, 5.01,  
6.01, 7.01, 9.01, 14.01,  
15.01, 16.01, 17.01, 18.01

BLOCK 208.08  
LOTS 1.01, 9.01, 10.01

BLOCK 208.06  
LOTS 1.02, 4.02, 8.02, 9.02,  
10.02, 13.02, 14.02,  
15.02, 18.02, 21.02,  
23.02, 24.02, 32.02

BLOCK 208.07  
LOTS 1.02, 2.02, 3.02, 5.02,  
6.02, 7.02, 9.02, 14.02,  
15.02, 16.02, 17.02, 18.02

BLOCK 208.08  
LOTS 1.02, 9.02, 10.02

FOUR SEASONS  
INSET "C"

NOTE: DIMENSIONS AND SQUARE FOOTAGE ARE TYPICAL FOR SIMILAR UNITS

DETAILS  
SCALE: 1"=20'

"THIS TAX MAP PLATE HAS BEEN DIGITALLY DRAWN USING COMPUTER-AIDED DRAFTING/DESIGN (CADD) AND COORDINATE GEOMETRY (COGO). IT IS BASED ON THE ORIGINAL DIGITALLY DRAWN TAX MAP PLATE BEARING THE OFFICIAL NEW JERSEY DIVISION OF TAXATION APPROVAL STAMP WITH APPROVAL DATE (7-31-2006) SERIAL NUMBER (896) AND SIGNATURES OF SIGNERS' JAMES J. COLL, CHIEF, LOCAL ASSESSMENT. SANTO C. DIDONATO, SUPERVISING FIELD REPRESENTATIVE. THIS TAX MAP PLATE HAS BEEN DIGITALLY UPDATED TO REFLECT CONDITIONS AS OF 6-20-07. THE ORIGINAL DIGITALLY DRAWN TAX MAP PLATE WITH THE OFFICIAL APPROVAL STAMP IS ON FILE WITH THE TOWNSHIP OF BARNEGAT ENGINEER."

CONDOMINIUM DETAILS AND DIMENSIONS  
FOUR SEASONS CONDOMINIUM  
SEE PLATES 103 AND 134

TAX MAP  
TOWNSHIP OF BARNEGAT

OCEAN COUNTY NEW JERSEY  
SCALE: NOTED DATE: 5-17-2005

CRAIG F. REMINGTON LAND SURVEYOR LIC. NO. 23924



REMINGTON, VERNICK & VENA ENGINEERS  
9 ALLEN STREET, TOMS RIVER, N.J. 08753  
(732) 286-9220, FAX (732) 505-8416  
WEB SITE ADDRESS: WWW.RVVE.COM