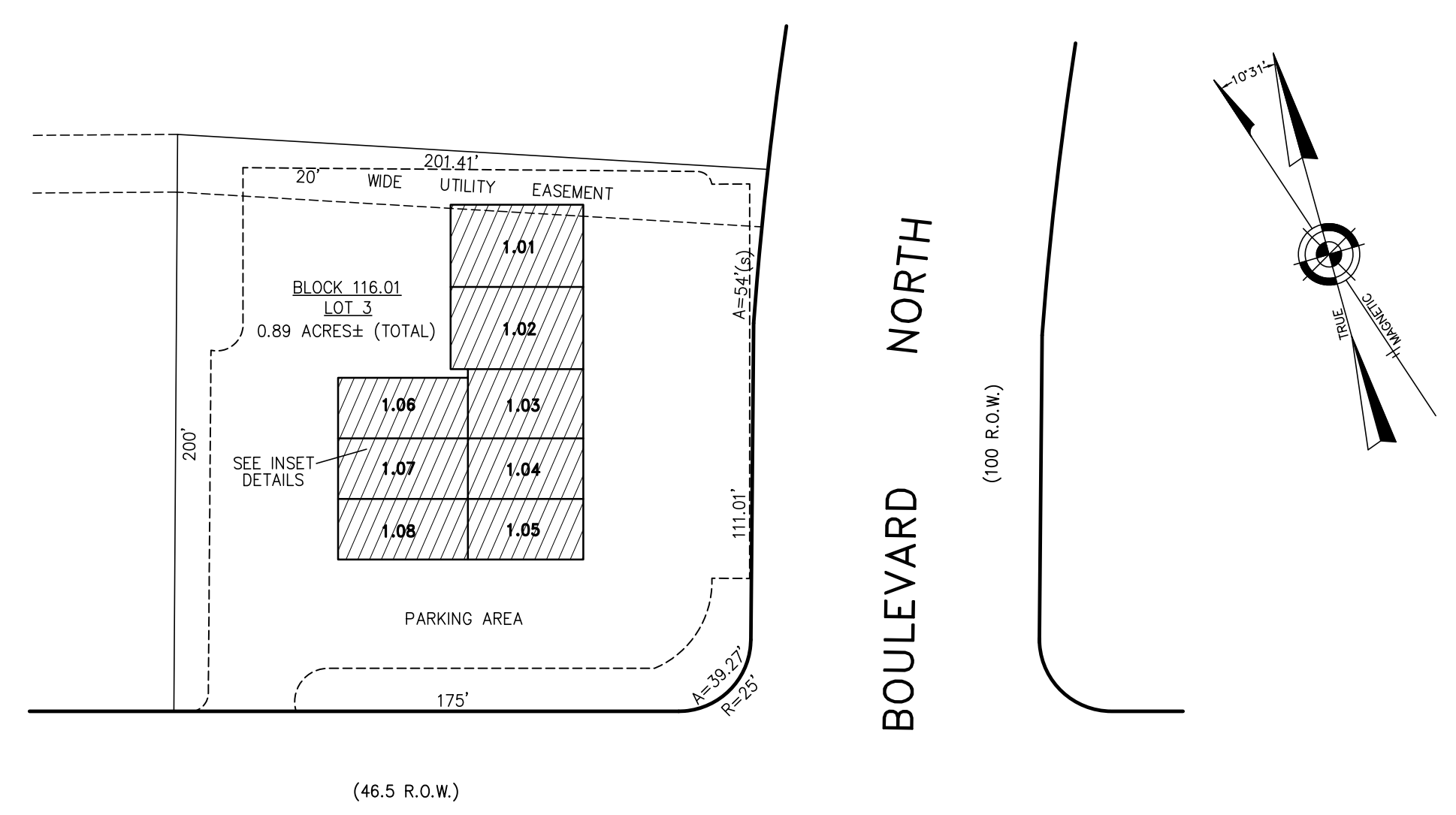


REVISIONS		
12-31-2008	CRAIG F. REMINGTON	23924

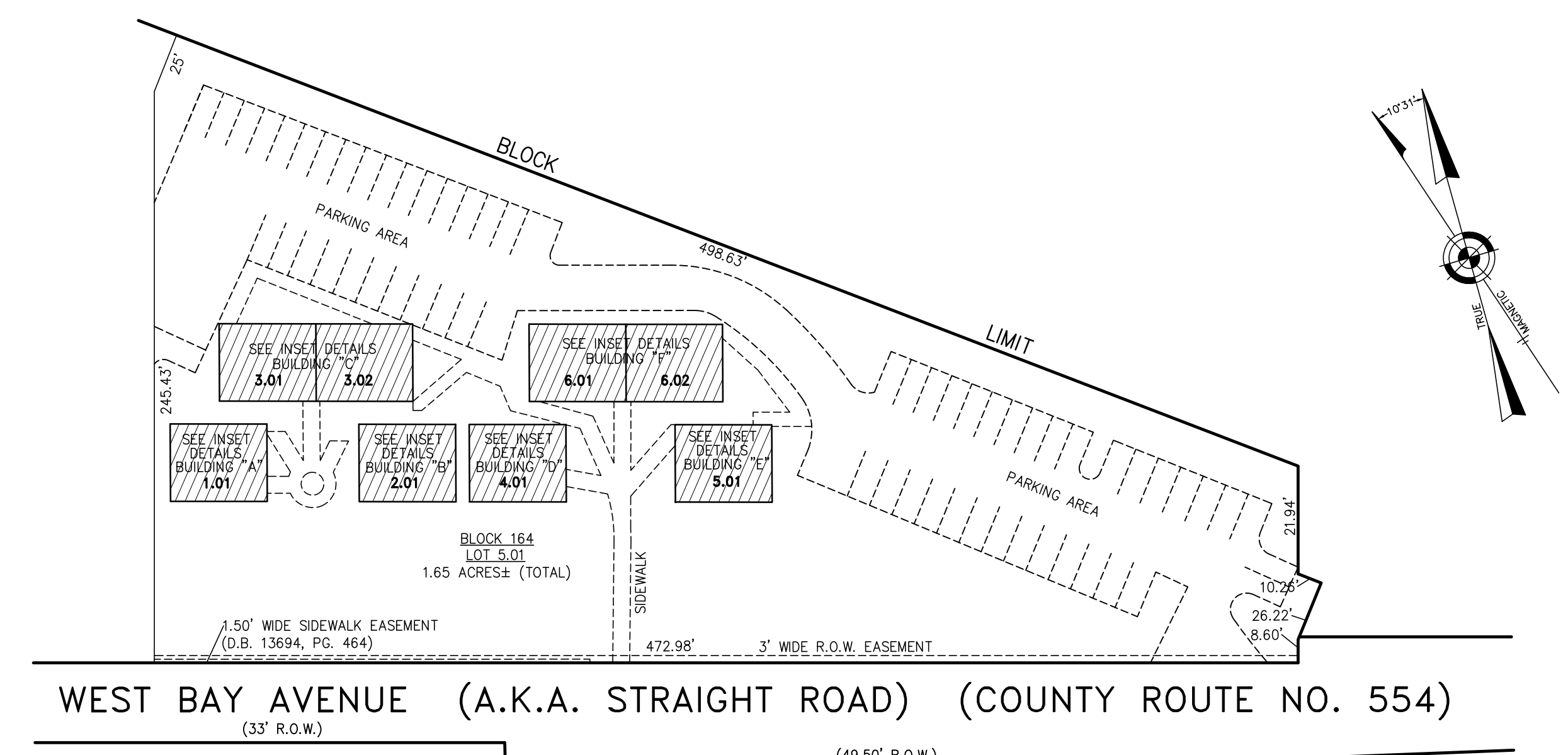


WEST BAY AVENUE
(A.K.A. STRAIGHT ROAD)
(COUNTY ROUTE NO. 554)

PLAN
SCALE: 1"=50'

BLOCK 116.01, LOT 3
VICTORIAN PLAZA
890 WEST BAY AVENUE
INSET "A"

TABLE	
UNIT	LOT
CA	C-01.01
CB	C-02.01
CC	C-03.01
CD	C-04.01
CE	C-05.01
CF	C-06.01
CG	C-07.01
CH	C-08.01

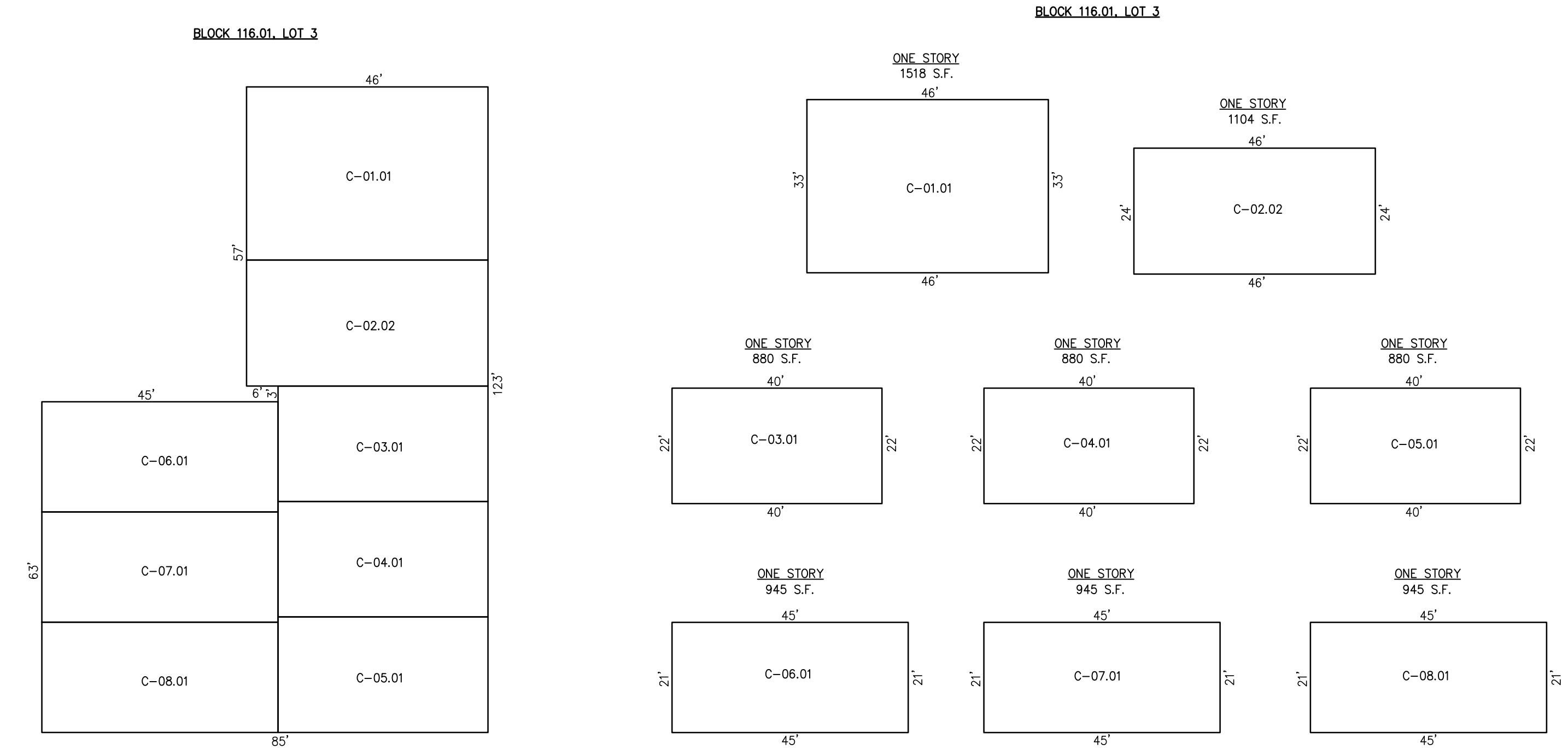


WEST BAY AVENUE (A.K.A. STRAIGHT ROAD) (COUNTY ROUTE NO. 554)

PLAN
SCALE: 1"=50'

BLOCK 164, LOT 5.01
BARNEGAT COMMONS
848 WEST BAY AVENUE
INSET "B"

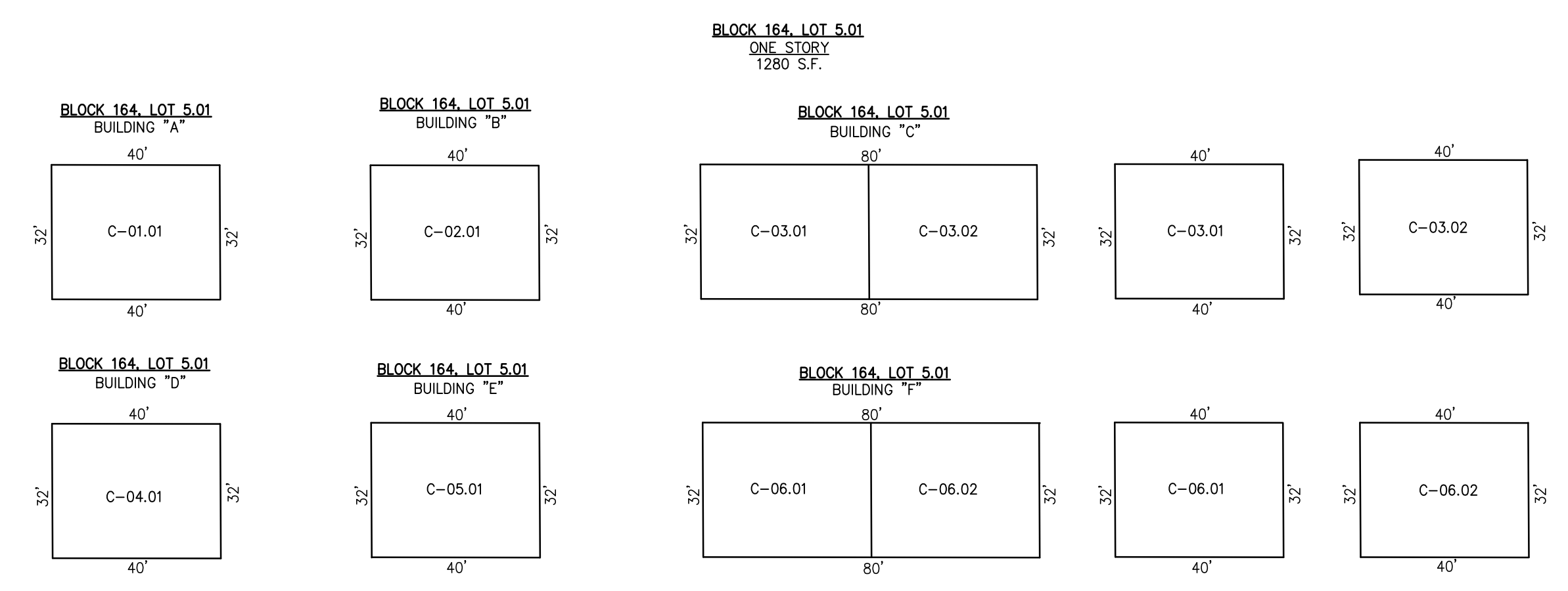
TABLE	
UNIT	LOT
CA1	C-01.01
CB1	C-02.01
CC1	C-03.01
CC2	C-03.02
CD1	C-04.01
CE1	C-05.01
CF1	C-06.01
CF2	C-06.02



NOTE: DIMENSIONS AND SQUARE FOOTAGE ARE TYPICAL FOR SIMILAR UNITS

DETAILS
SCALE: 1"=20'

CONDOMINIUM DETAILS AND DIMENSIONS
BLOCK 116.01, LOT 3
SEE PLATE 69



NOTE: DIMENSIONS AND SQUARE FOOTAGE ARE TYPICAL FOR SIMILAR UNITS

DETAILS
SCALE: 1"=30'

CONDOMINIUM DETAILS AND DIMENSIONS
BLOCK 164, LOT 5.01
SEE PLATE 85

"THIS TAX MAP PLATE HAS BEEN DIGITALLY DRAWN USING COMPUTER-AIDED DRAFTING/DESIGN (CADD) AND COORDINATE GEOMETRY (COGO). IT IS BASED ON THE ORIGINAL DIGITALLY DRAWN TAX MAP PLATE BEARING THE OFFICIAL NEW JERSEY DIVISION OF TAXATION APPROVAL STAMP WITH APPROVAL DATE (7-31-2006) SERIAL NUMBER (896) AND SIGNATURES OF SIGNERS' JAMES J. COLL, CHIEF, LOCAL ASSESSMENT, SANTO C. DIDONATO, SUPERVISING FIELD REPRESENTATIVE. THIS TAX MAP PLATE HAS BEEN DIGITALLY UPDATED TO REFLECT CONDITIONS AS OF 12-31-2008. THE ORIGINAL DIGITALLY DRAWN TAX MAP PLATE WITH THE OFFICIAL APPROVAL STAMP IS ON FILE WITH THE TOWNSHIP OF BARNEGAT ENGINEER."

TAX MAP TOWNSHIP OF BARNEGAT

OCEAN COUNTY NEW JERSEY
SCALE: NOTED DATE: 7-26-05
CRAIG F. REMINGTON LAND SURVEYOR LIC. NO. 23924



REMINGTON, VERNICK & VENA ENGINEERS
24 GA. 28003300
9 ALLEN STREET, TOMS RIVER, N.J. 08753
(732) 296-9220, FAX (732) 505-9416
WEB SITE ADDRESS: WWW.RVVE.COM