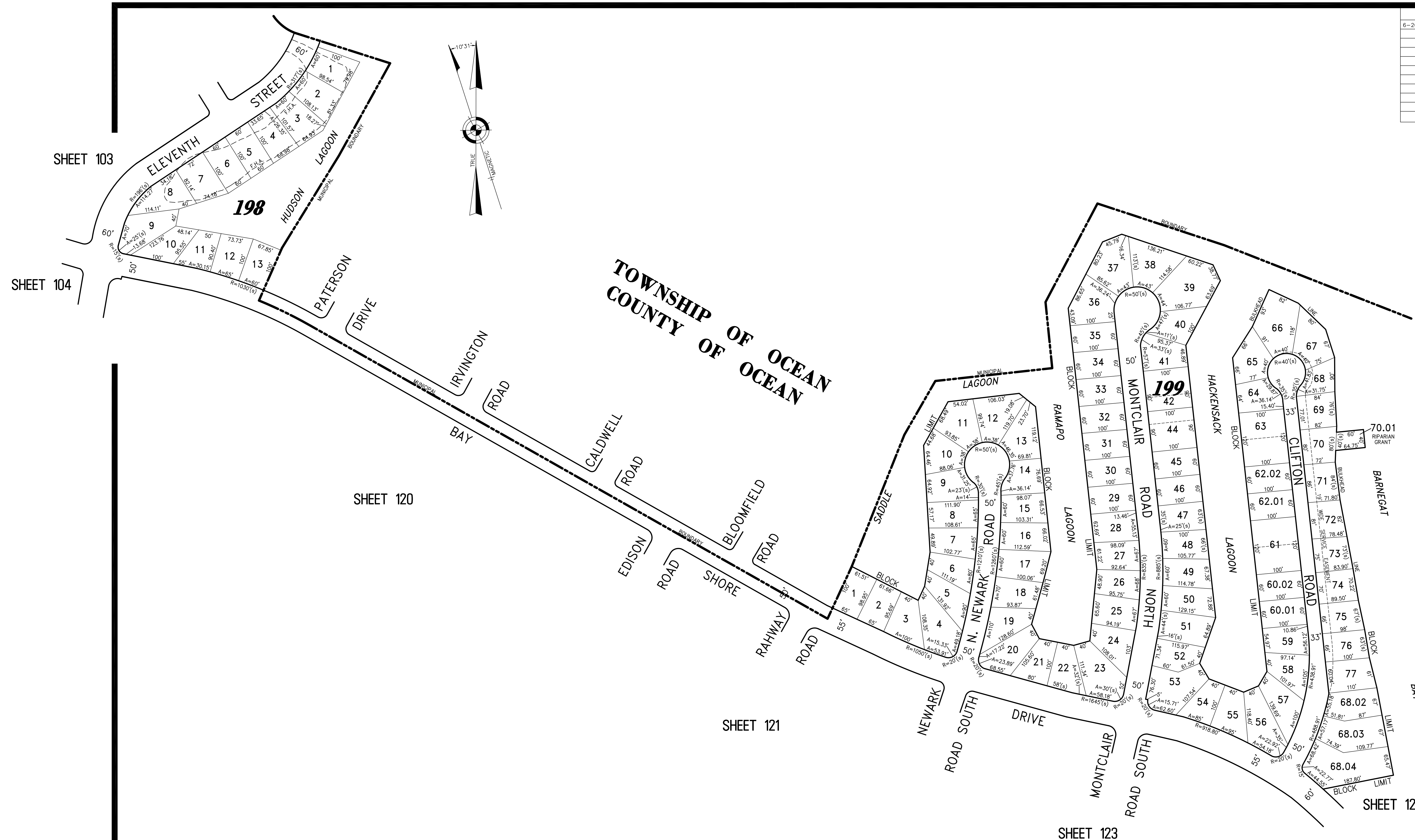


REVISIONS		
6-20-2007	CRAIG F. REMINGTON	23924



SHEET 103

SHEET 104

SHEET 120

SHEET 121

SHEET 123

SHEET 123

"THIS TAX MAP PLATE HAS BEEN DIGITALLY DRAWN USING COMPUTER-AIDED DRAFTING/DESIGN (CADD), AND COORDINATE GEOMETRY (COGO). IT IS BASED ON THE ORIGINAL DIGITALLY DRAWN TAX MAP PLATE BEARING THE OFFICIAL NEW JERSEY DIVISION OF TAXATION APPROVAL STAMP WITH APPROVAL DATE (7-31-2006) SERIAL NUMBER (896) AND SIGNATURES OF SIGNERS' JAMES J. COLL, CHIEF, LOCAL ASSESSMENT. SANTO C. DIDONATO, SUPERVISING FIELD REPRESENTATIVE. THIS TAX MAP PLATE HAS BEEN DIGITALLY UPDATED TO REFLECT CONDITIONS AS OF 6-20-07. THE ORIGINAL DIGITALLY DRAWN TAX MAP PLATE WITH THE OFFICIAL APPROVAL STAMP IS ON FILE WITH THE TOWNSHIP OF BARNEGAT ENGINEER."

### TAX MAP TOWNSHIP OF BARNEGAT

OCEAN COUNTY NEW JERSEY  
SCALE: 1" = 100' DATE: 4-19-2005

CRAIG F. REMINGTON LAND SURVEYOR LIC. NO. 23924



24 GA 28003300  
**REMINGTON, VERNICK & VENA ENGINEERS**  
9 ALLEN STREET, TOMS RIVER, N.J. 08753  
(732) 286-9220, FAX (732) 505-8416  
WEB SITE ADDRESS: WWW.RVVE.COM