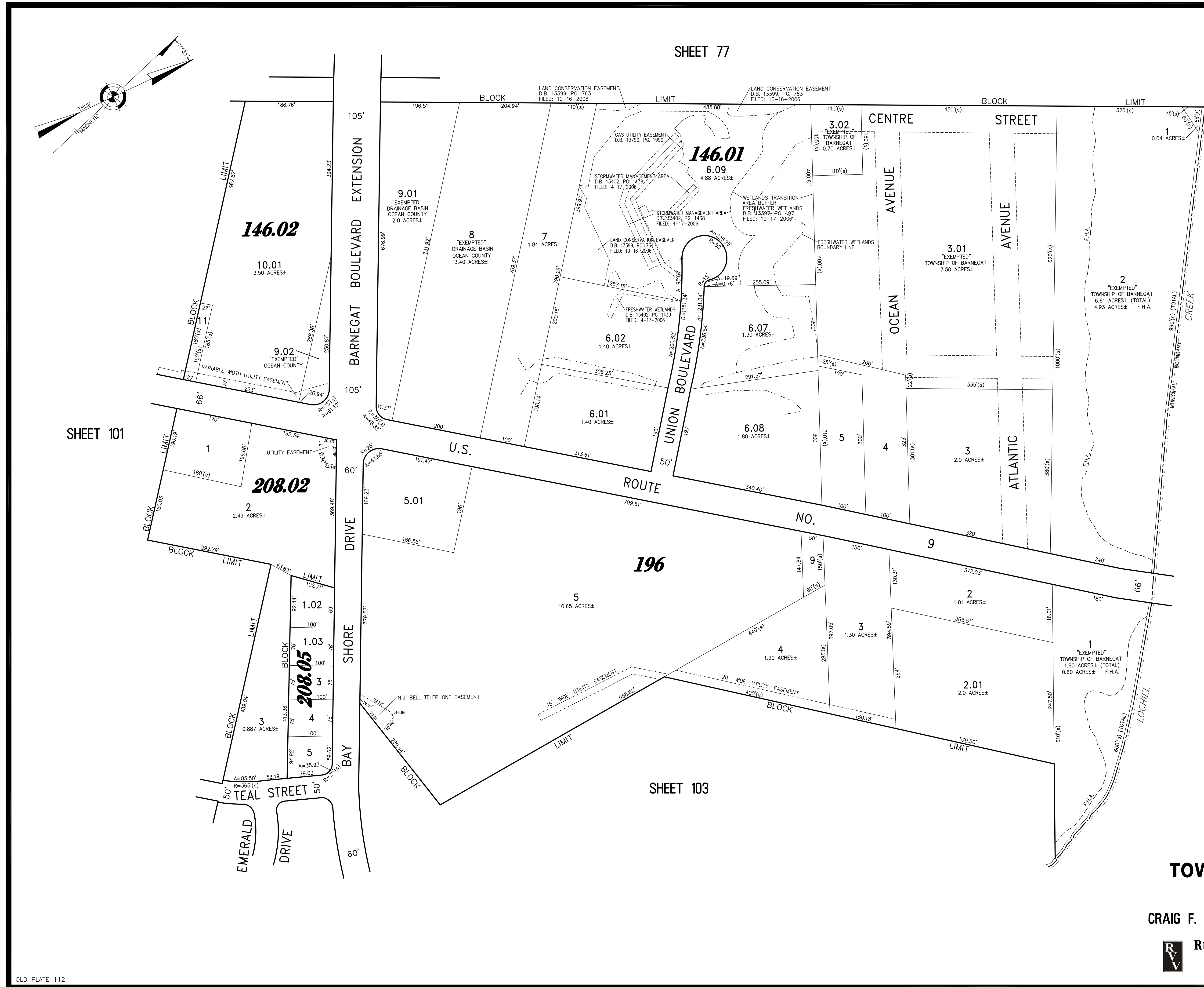


REVISIONS		
12-31-2008	CRAIG F. REMINGTON	23924



TOWNSHIP OF BARNEGAT  
 COUNTY OF OCEAN

THIS TAX MAP PLATE HAS BEEN DIGITALLY DRAWN USING COMPUTER-AIDED DRAFTING/DESIGN (CADD) AND COORDINATE GEOMETRY (COGO). IT IS BASED ON THE ORIGINAL DIGITALLY DRAWN TAX MAP PLATE BEARING THE OFFICIAL NEW JERSEY DIVISION OF TAXATION APPROVAL STAMP WITH APPROVAL DATE (7-31-2006) SERIAL NUMBER (896) AND SIGNATURES OF SIGNERS' JAMES J. COLL, CHIEF, LOCAL ASSESSMENT; SANTO C. DIONATO, SUPERVISING FIELD REPRESENTATIVE. THIS TAX MAP PLATE HAS BEEN DIGITALLY UPDATED TO REFLECT CONDITIONS AS OF 12-31-2008. THE ORIGINAL DIGITALLY DRAWN TAX MAP PLATE WITH THE OFFICIAL APPROVAL STAMP IS ON FILE WITH THE TOWNSHIP OF BARNEGAT ENGINEER.

### TAX MAP TOWNSHIP OF BARNEGAT

OCEAN COUNTY NEW JERSEY  
SCALE: 1" = 100' DATE: 4-13-2005

CRAIG F. REMINGTON LAND SURVEYOR LIC. NO. 23924

**REMINGTON, VERNICK & VENA ENGINEERS**  
 9 ALLEN STREET, TOMS RIVER, N.J. 08753  
 (732) 286-9220, FAX (732) 505-8416  
 WEB SITE ADDRESS: WWW.RVVE.COM

SHEET 101

SHEET 77

SHEET 103