

REVISIONS		
7-31-2006	CRAIG F. REMINGTON	23924
2-1-2010	CRAIG F. REMINGTON	23924
12-31-2013	CRAIG F. REMINGTON	23924


### TAX MAP

## TOWNSHIP OF BARNEGAT

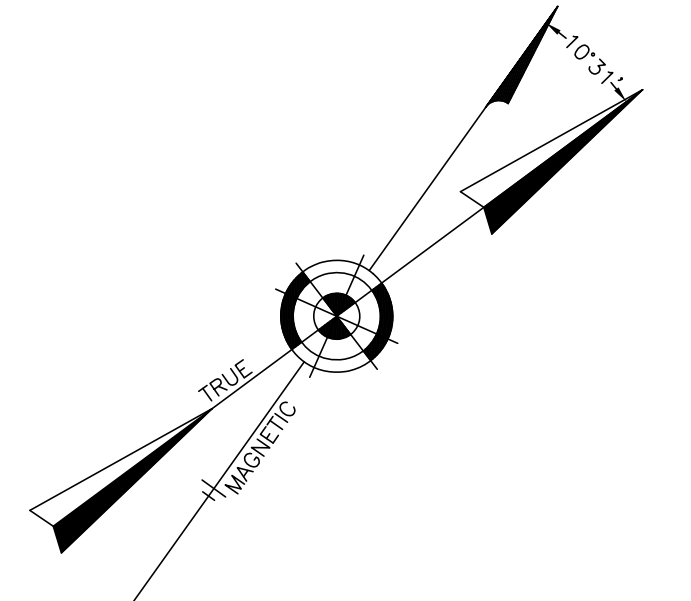
OCEAN COUNTY NEW JERSEY

SCALE: 1" = 100' DATE: 10-29-2004

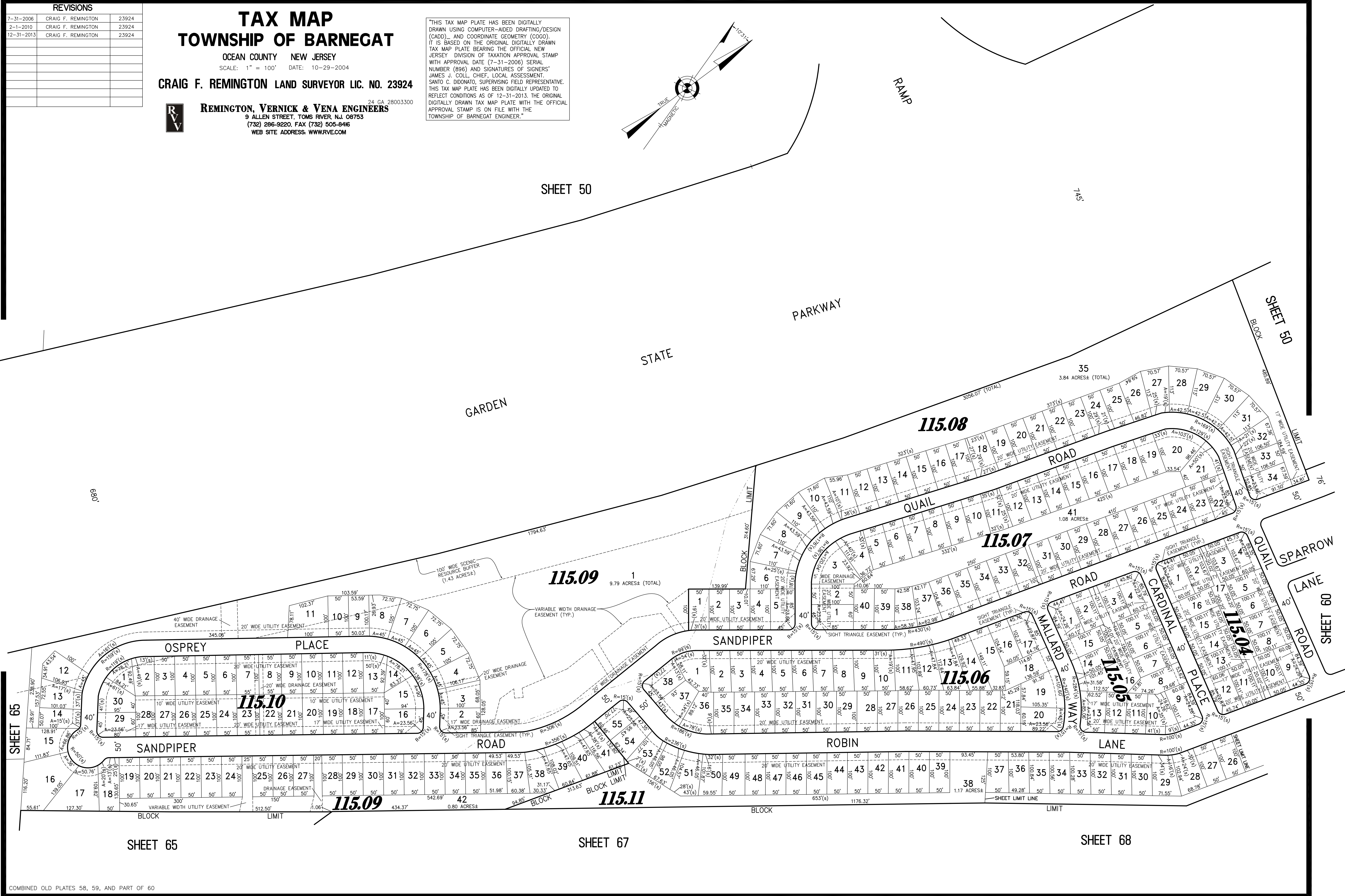
**CRAIG F. REMINGTON LAND SURVEYOR LIC. NO. 23924**


**REMINGTON, VERNICK & VENA ENGINEERS**  
 24 GA 28003300  
 9 ALLEN STREET, TOMS RIVER, N.J. 08753  
 (732) 286-9220, FAX (732) 505-8416  
 WEB SITE ADDRESS: WWW.RVE.COM

THIS TAX MAP PLATE HAS BEEN DIGITALLY DRAWN USING COMPUTER-AIDED DRAFTING/DESIGN (CADD) AND COORDINATE GEOMETRY (COGO). IT IS BASED ON THE ORIGINAL DIGITALLY DRAWN TAX MAP PLATE BEARING THE OFFICIAL NEW JERSEY DIVISION OF TAXATION APPROVAL STAMP WITH APPROVAL DATE (7-31-2006) SERIAL NUMBER (896) AND SIGNATURES OF SIGNERS' JAMES J. COLL, CHIEF, LOCAL ASSESSMENT; SANTO C. DIDONATO, SUPERVISING FIELD REPRESENTATIVE. THIS TAX MAP PLATE HAS BEEN DIGITALLY UPDATED TO REFLECT CONDITIONS AS OF 12-31-2013. THE ORIGINAL DIGITALLY DRAWN TAX MAP PLATE WITH THE OFFICIAL APPROVAL STAMP IS ON FILE WITH THE TOWNSHIP OF BARNEGAT ENGINEER.



SHEET 50



SHEET 65

SHEET 65

SHEET 67

SHEET 68

COMBINED OLD PLATES 58, 59, AND PART OF 60