

SHEET 27

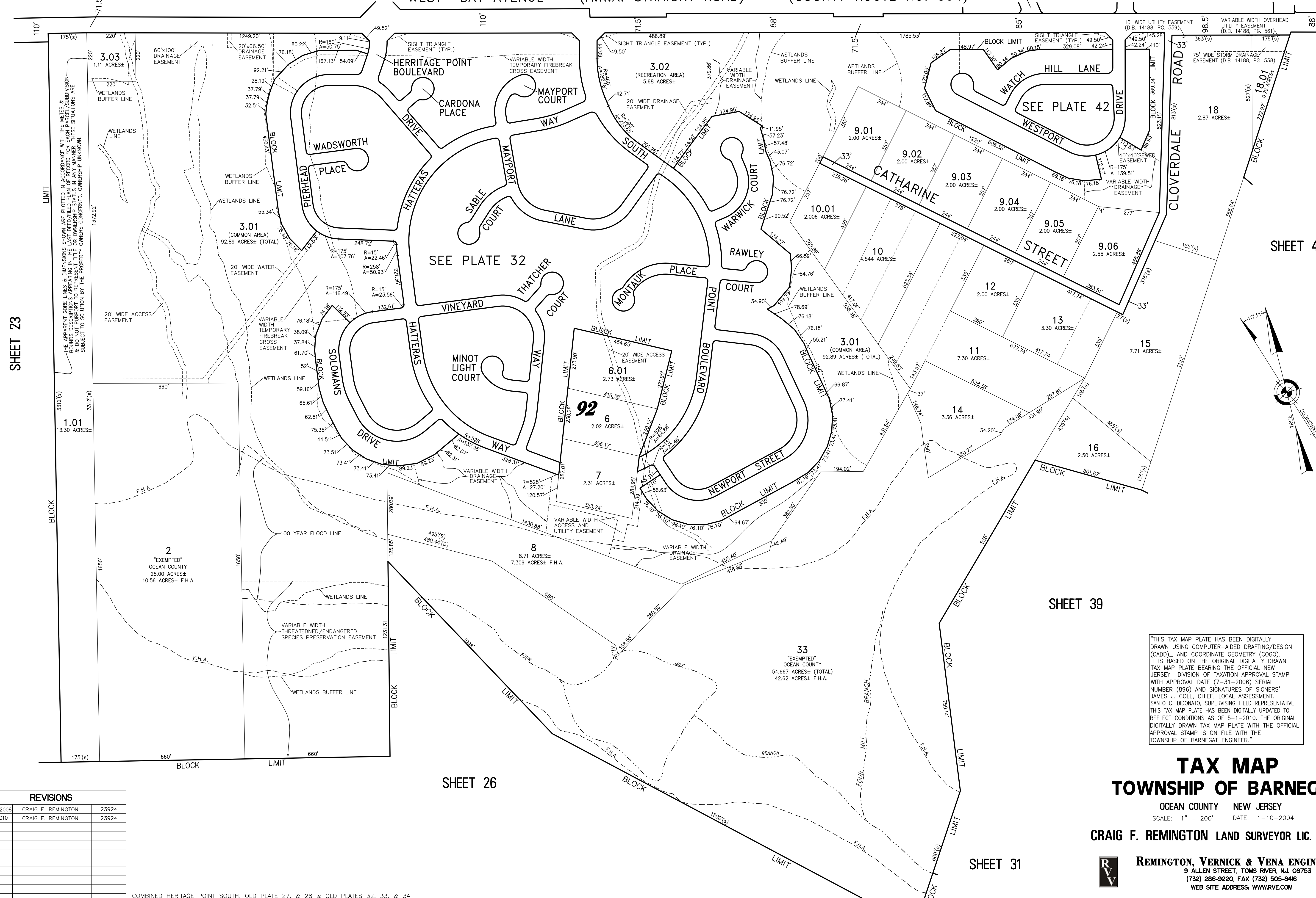
SHEET 29

SHEET 35

SHEET 36

WEST BAY AVENUE (A.K.A. STRAIGHT ROAD) (COUNTY ROUTE NO. 554)

PINE OAK BOULEVARD



SHEET 23

SHEET 40

SHEET 39

SHEET 26

SHEET 31

REVISIONS		
12-31-2008	CRAIG F. REMINGTON	23924
5-1-2010	CRAIG F. REMINGTON	23924

COMBINED HERITAGE POINT SOUTH, OLD PLATE 27, & 28 & OLD PLATES 32, 33, & 34

"THIS TAX MAP PLATE HAS BEEN DIGITALLY DRAWN USING COMPUTER-AIDED DRAFTING/DESIGN (CAD) AND COORDINATE GEOMETRY (COGO). IT IS BASED ON THE ORIGINAL DIGITALLY DRAWN TAX MAP PLATE BEARING THE OFFICIAL NEW JERSEY DIVISION OF TAXATION APPROVAL STAMP WITH APPROVAL DATE (7-31-2006) SERIAL NUMBER (896) AND SIGNATURES OF SIGNERS' JAMES J. COLL, CHIEF, LOCAL ASSESSMENT, SANTO C. DIONATO, SUPERVISING FIELD REPRESENTATIVE. THIS TAX MAP PLATE HAS BEEN DIGITALLY UPDATED TO REFLECT CONDITIONS AS OF 5-1-2010. THE ORIGINAL DIGITALLY DRAWN TAX MAP PLATE WITH THE OFFICIAL APPROVAL STAMP IS ON FILE WITH THE TOWNSHIP OF BARNEGAT ENGINEER."

TAX MAP

TOWNSHIP OF BARNEGAT

OCEAN COUNTY NEW JERSEY

SCALE: 1" = 200' DATE: 1-10-2004

CRAIG F. REMINGTON LAND SURVEYOR LIC. NO. 23924



REMINGTON, VERNICK & VENA ENGINEERS
 24 GA 28003300
 9 ALLEN STREET, TOMS RIVER, NJ 08753
 (732) 286-9220, FAX (732) 505-846
 WEB SITE ADDRESS: WWW.RVVE.COM