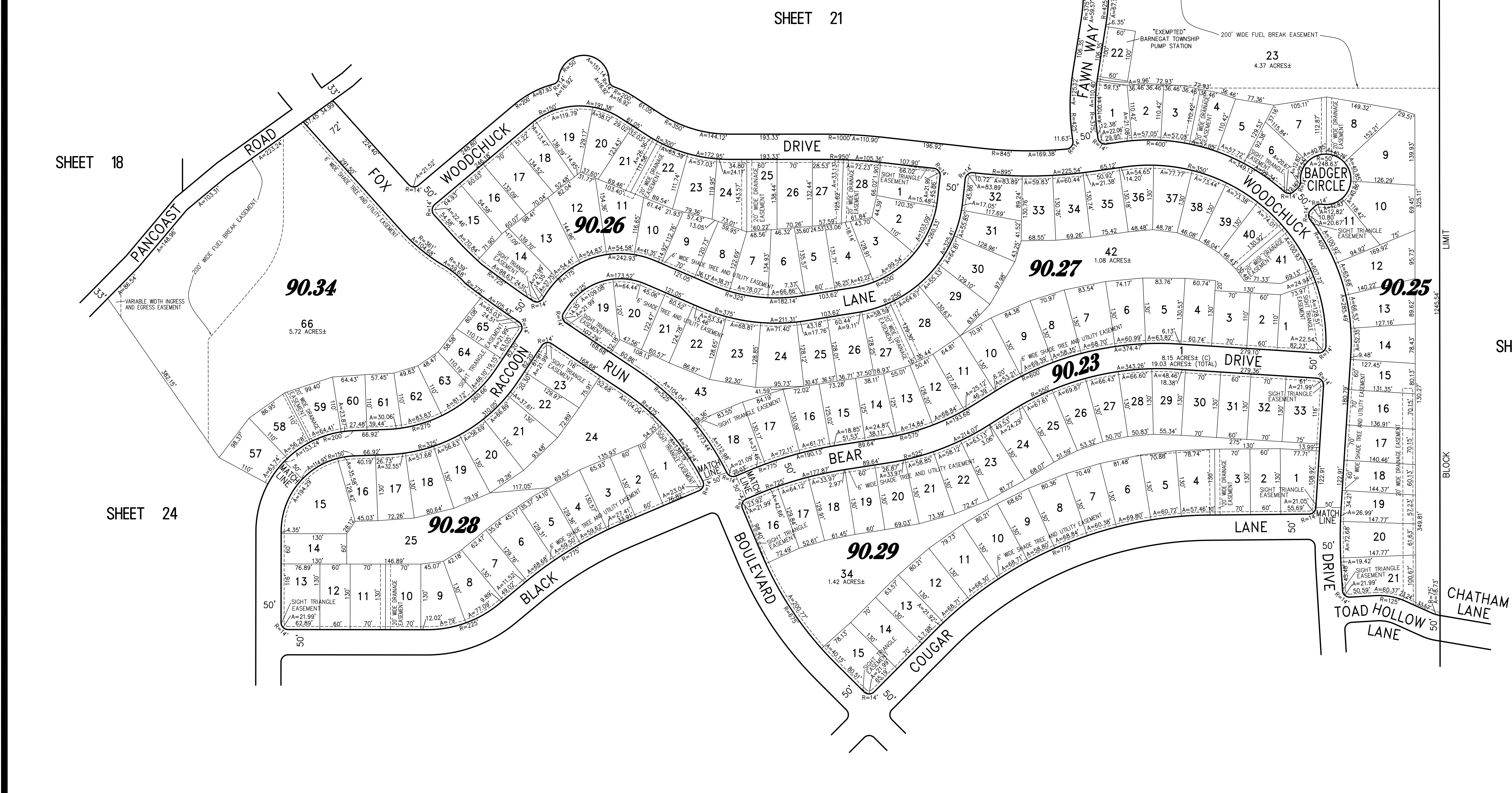
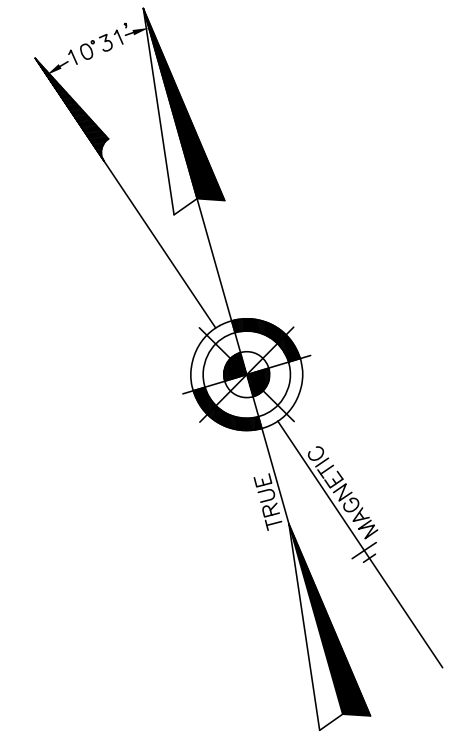


REVISIONS		
12-31-2008	CRAIG F. REMINGTON	23924



SHEET 18

SHEET 24

PART OF OLD PLATES 20, 21 & 22

SHEET 21

SHEET 24

SHEET 19

"THIS TAX MAP PLATE HAS BEEN DIGITALLY DRAWN USING COMPUTER-AIDED DRAFTING/DESIGN (CADD) AND COORDINATE GEOMETRY (COGO). IT IS BASED ON THE ORIGINAL DIGITALLY DRAWN TAX MAP PLATE BEARING THE OFFICIAL NEW JERSEY DIVISION OF TAXATION APPROVAL STAMP WITH APPROVAL DATE (7-31-2006) SERIAL NUMBER (896) AND SIGNATURES OF SIGNERS' JAMES J. COLL, CHIEF, LOCAL ASSESSMENT. SANTO C. DIDOMATO, SUPERVISING FIELD REPRESENTATIVE. THIS TAX MAP PLATE HAS BEEN DIGITALLY UPDATED TO REFLECT CONDITIONS AS OF 12-31-2008. THE ORIGINAL DIGITALLY DRAWN TAX MAP PLATE WITH THE OFFICIAL APPROVAL STAMP IS ON FILE WITH THE TOWNSHIP OF BARNEGAT ENGINEER."


TAX MAP

TOWNSHIP OF BARNEGAT

OCEAN COUNTY NEW JERSEY

SCALE: 1" = 100' DATE: 5-4-2005

CRAIG F. REMINGTON LAND SURVEYOR LIC. NO. 23924


REMINGTON, VERNICK & VENA ENGINEERS
 24 GA. 28003300
 9 ALLEN STREET, TOMS RIVER, NJ 08753
 (732) 286-9220, FAX (732) 505-9416
 WEB SITE ADDRESS: WWW.RVVE.COM