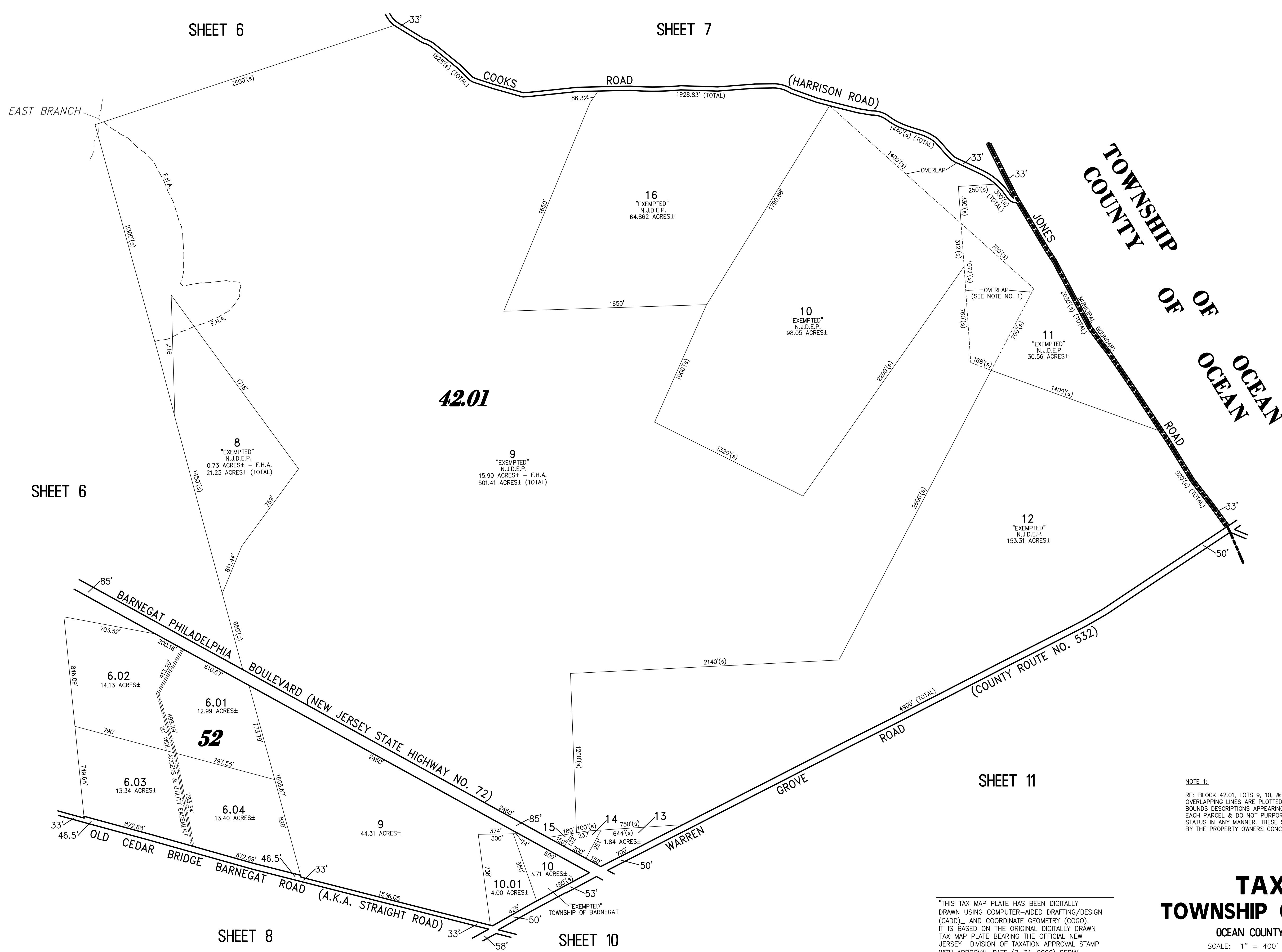
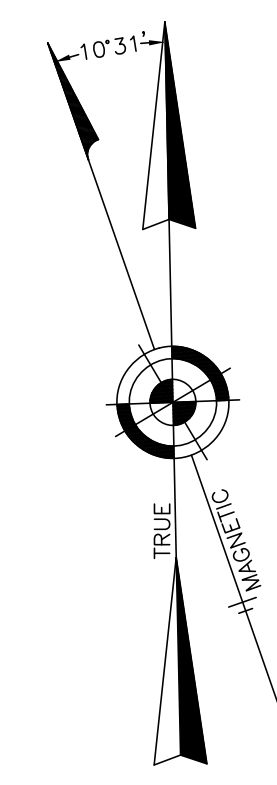


REVISIONS		
6-20-2007	CRAIG F. REMINGTON	23924



NOTE 1:  
 RE: BLOCK 42.01, LOTS 9, 10, & 11 & BLOCK 52, LOTS 6.05 & 7. THE OVERLAPPING LINES ARE PLOTTED IN ACCORDANCE WITH THE METES & BOUNDS DESCRIPTIONS APPEARING IN THE LAST DEED OF RECORD FOR EACH PARCEL & DO NOT PURPORT TO REPRESENT TITLE OF OWNERSHIP STATUS IN ANY MANNER. THESE SITUATIONS ARE SUBJECT TO SOLUTION BY THE PROPERTY OWNERS CONCERNED.

"THIS TAX MAP PLATE HAS BEEN DIGITALLY DRAWN USING COMPUTER-AIDED DRAFTING/DESIGN (CADD) AND COORDINATE GEOMETRY (COGO). IT IS BASED ON THE ORIGINAL DIGITALLY DRAWN TAX MAP PLATE BEARING THE OFFICIAL NEW JERSEY DIVISION OF TAXATION APPROVAL STAMP WITH APPROVAL DATE (7-31-2006) SERIAL NUMBER (896) AND SIGNATURES OF SIGNERS' JAMES J. COLL, CHIEF, LOCAL ASSESSMENT. SANTO C. DIDONATO, SUPERVISING FIELD REPRESENTATIVE. THIS TAX MAP PLATE HAS BEEN DIGITALLY UPDATED TO REFLECT CONDITIONS AS OF 6-20-07. THE ORIGINAL DIGITALLY DRAWN TAX MAP PLATE WITH THE OFFICIAL APPROVAL STAMP IS ON FILE WITH THE TOWNSHIP OF BARNEGAT ENGINEER."

### TAX MAP TOWNSHIP OF BARNEGAT

OCEAN COUNTY NEW JERSEY  
 SCALE: 1" = 400' DATE: 4-27-2005  
**CRAIG F. REMINGTON LAND SURVEYOR LIC. NO. 23924**

**REMINGTON, VERNICK & VENA ENGINEERS**  
 9 ALLEN STREET, TOMS RIVER, N.J. 08753  
 (732) 286-9220, FAX (732) 505-8446  
 WEB SITE ADDRESS: WWW.RVVE.COM